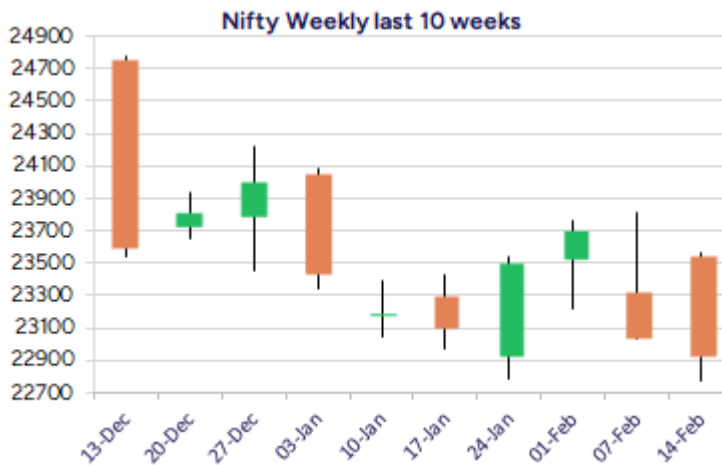
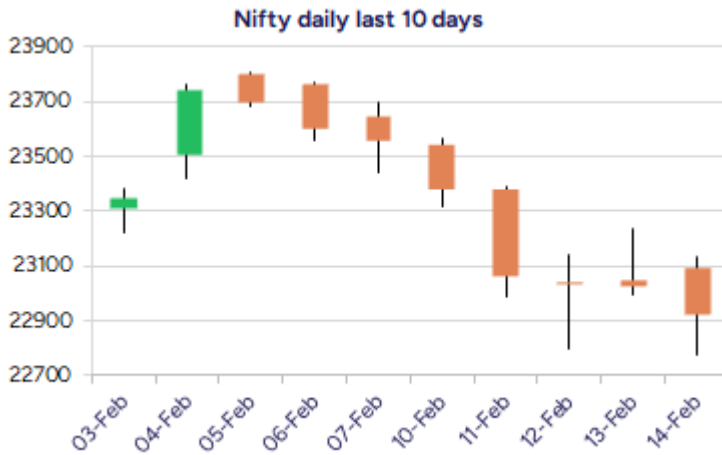


* Sensex 77939.21 -199.76

* Nifty 22929.25 -102.15

* Bank Nifty 49099.45 -260.40



*Blue candle → Close rate > Open rate * Red candle → Close rate < Open rate

Market Preview

Nifty retest 22800 zone; ends below 23000 level

Nifty with weak bias once again retested the 22800 zone with pessimism creeping in and sentiment precariously placed. BankNifty amid volatility witnessed a slide with pressure building up and managed to close above the 49000 zone. The advance decline turned weak with a ratio of 1:4 at close.

Market Forecast

Nifty daily range 22700-23200

Nifty plunged significantly after the opening session to retest the 22800 zone for the third time and witnessed a decent pullback to close above the 22900 level with some hopes sustained for upward movement of the index. The index is subjected to selling pressure with the overall bias weakened and as mentioned earlier, it would need a decisive breach above the 23300-23350 zone to establish conviction and anticipate for further rise.

BankNifty in a similar pattern, amid volatility slipped down to 48700 zone once again, from where a pullback witnessed, managed to end the session above the 49000 zone with hopes kept alive for recovery in the coming sessions. The index has the resistance barrier near the 49800 level which needs to be breached decisively in order to establish conviction and anticipate for further rise.

The support for the day is seen at 22700 levels while the resistance is seen at 23200 levels. BankNifty would have the daily range of 48600-49700 levels.

Indices	Period	Closing	% Chng	Trend	Reversal	2 Sup	1 Sup	Pivot	1 Res	2 Res
Nifty	Daily	22929.25	-0.44%	-5	23140.40	22587	22758	22946	23117	23305
	Weekly	22929.25	-2.68%	-1	23209.30	22297	22613	23091	23407	23885
	Monthly	23508.40	-0.58%	-4	26209.65	22068	22788	23507	24228	24947
Bank Nifty	Daily	49099.45	-0.53%	-5	49611.25	48264	48682	49137	49555	50011
	Weekly	49099.45	-2.11%	-1	49065.75	47889	48494	49325	49930	50761
	Monthly	49587.20	-2.50%	-4	53427.15	45873	47730	49701	51559	53530
Sensex	Daily	75939.21	-0.26%	-5	76576.15	74911	75425	75954	76468	76997
	Weekly	75939.21	-2.47%	-1	76750.60	73931	74935	76392	77396	78854
	Monthly	77500.57	-0.82%	-4	85623.60	72808	75154	77614	79960	82419

Daily Trend turned Down

Scrip Name	LCP	Curr Trnd	Reversal
ADANIPOWER	488.65	2	497.25
AUROPHARMA	1131.35	1	1167.9
BERGEPAIN	478.3	2	482.35
CASTROLIND	196.6	13	208.5
CHOLAFIN	1376	1	1384.15
CIPLA	1459.45	1	1460.2
DRREDDY	1197.05	2	1215.4
ENGINERSIN	160.48	2	164.65
FSL	352.4	7	355.35
GRASIM	2431.3	1	2489.25
INDIAMART	2124.6	1	2176.25
INDIGO	4223.3	1	4360.5

* Trends turned Down after a significant period

Daily Trend turned Down

Scrip Name	LCP	Curr Trnd	Reversal
JSWSTEELLTD	964.6	1	966.35
KOTMAHBNK	1952.4	2	1958.8
KTKBANK	176.56	7	179.1
MUTHOOTFIN	2254.9	1	2256.8
NATIONALUM	181.63	1	190.95
SAIL	105.71	2	106
SUNPHARMA	1700.5	1	1710.75
WABAG	1385.25	13	1422.05

* Trends turned Down after a significant period

Gainers - Losers (Nifty 500 Stocks)

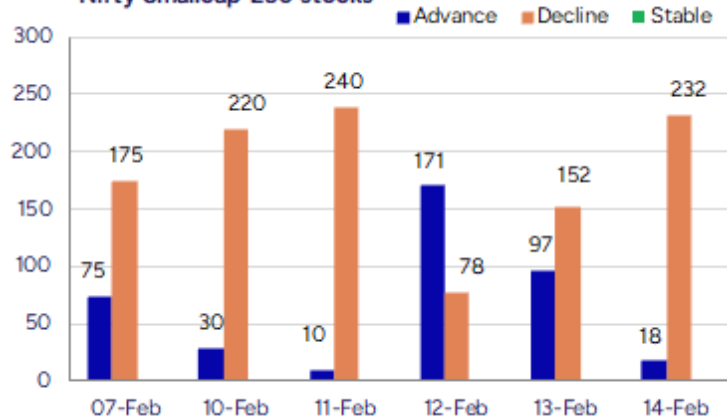
Gainers

Scrip Name	LCP	% Change	Volume
Natural Capsule	249.55	2	6543
Jubilant Agri	1510.4	1	458
Godfrey Phillip	5999.5	20	2954946
Nitiraj Enginee	272.94	14.97	326417
Ingersoll Rand	3532.55	11.32	87953
TCPL Packaging	3484.75	8.54	72803
Aarti Drugs	411.5	7.47	480904

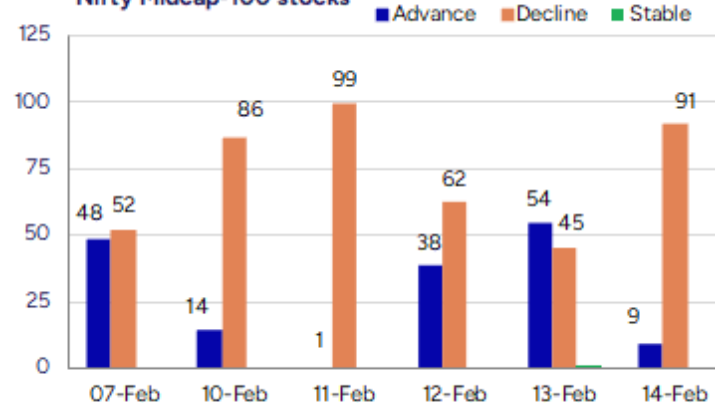
Losers

Scrip Name	LCP	% Change	Volume
Macpower	978.45	-20	276417
Concord Enviro	522.35	-20	934736
Senco Gold	366.65	-17.98	2709413
Network People	1810	-17.7	327300
Sandesh	1181	-15.83	12072
Deepak Nitrite	1945.2	-13.09	2242945
Concord Biotech	1837.5	-12.98	314002

Nifty Smallcap-250 stocks



Nifty Midcap-100 stocks



Nifty Daily chart with RSI indicator



BankNifty Daily chart with RSI indicator

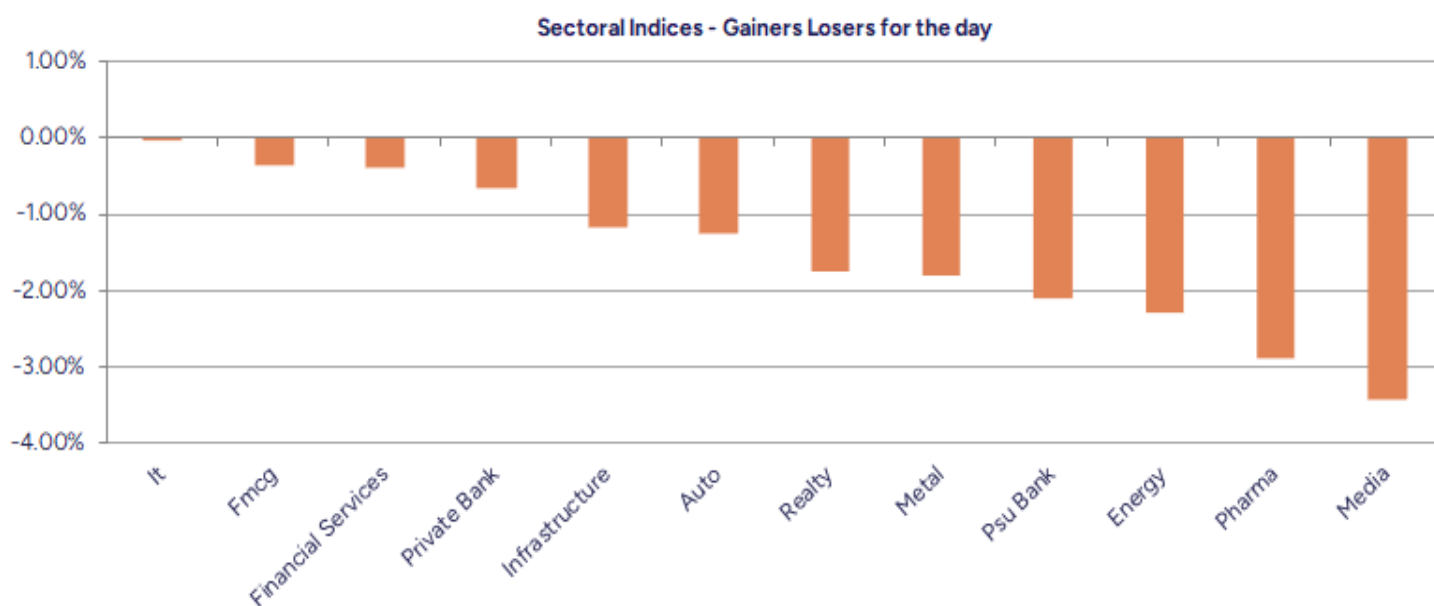


Breakouts - Cross above 200 DMA			
Company Name	LCP	Change %	200 DMA
Godfrey Phillip	5999.5	14.89	5222.06
Nitiraj Enginee	272.94	14.45	238.49
Sundaram Fin	4565.2	0.27	4553.04

Breakdown - Cross below 200 DMA			
Company Name	LCP	Change %	200 DMA
Concord Biotech	1692.3	-8.58	1851.04
Campus	268.6	-7.54	290.49
Fiberweb India	43.79	-7.40	47.29
DCW	73.86	-7.34	79.71
KFin Tech	924.85	-7.32	997.91
Pricol	452.9	-7.31	488.6
Welspun Enter	494.65	-6.02	526.31
Urban Enviro Wa	218	-6.01	231.93
Capacite Infra	337.65	-5.71	358.1
Saregama India	486.75	-5.58	515.51
Renaissance	130.38	-5.43	137.87
Manappuram Fin	178.15	-5.37	188.25
Marksans Pharma	230.69	-4.88	242.52
Indo Tech Trans	2113.7	-4.77	2219.62
Signpost India	268.65	-4.73	282
HRH Next	66.15	-4.72	69.43
Krebs Biochem	82.06	-4.63	86.04
BLS Internation	375.3	-4.52	393.06

* Stocks crossing above its Simple Moving Average (200DMA)

* Stocks crossing below its Simple Moving Average (200DMA)



Stocks witnessing a volume surge as compared to their 5 day average volur

Watch out for the stocks that have seen a huge spurt in its share price over the last three days

Volume Shockers - NSE					
Company name	LCP	% Chg	Volume	Avg Vol *	% Chg
Macpower	978.45	-20	283025	7721	3565
Emkay Taps	411	-4.64	44550	1560	2756
WE WIN	59.92	-19.17	133683	4848	2658
BEW Engineering	167.35	-2.48	28000	1125	2389
Sikko Industrie	64.74	-9.76	650168	29809	2081
A B Infrabuild	85.28	-6.97	307994	15200	1926
Senco Gold	357.6	-20	4731712	304379	1455
Sky Gold	368	-2.27	382771	25989	1373
Anupam	684.8	2.45	1031832	77852	1225
Jash Engineerin	544	-4	316541	26774	1082
Medico Remedies	66.7	-3.7	3223926	289862	1012
Redington	245.56	0.41	9984887	939548	963
Network People	1850	-15.88	415450	39840	943
Diamond Power	90.16	-5	69674	6800	925
Godfrey Phillip	5999.5	20	2946682	292984	906
Vakrangee	16.6	5	34575563	3454529	901
Jai Balaji Ind	142.47	-3.51	539671	54390	892
Deepak Nitrite	1902.6	-15	5603417	585885	856
Mono Pharmacare	24.25	-3.96	328000	35200	832
Sintercom India	125.1	-2.96	192328	20827	823

* the Average Volume of last 5 days

Price Shockers - NSE				
Company name	LCP	3 days *	% Chg	Volume
Nitiraj Enginee	272.94	218.89	24.69	326417
Indo Count	321.8	269.65	19.34	934857
Godfrey Phillip	5999.5	5125.95	17.04	2954946
EMA Partners In	125.3	107.3	16.78	157000
Norben Tea	36.54	31.58	15.71	24261
Jalan Transolut	11.85	10.3	15.05	108000
Zenithexpo	326.4	284.6	14.69	25485
Tribhovandas	195.76	170.86	14.57	1098520
Pulz Electronic	56.4	49.3	14.4	20000
Udayshivakumar	47.57	41.92	13.48	198939
Pearl Global In	1422.25	1261.7	12.72	175853
TCPL Packaging	3484.75	3103.05	12.3	72803
Ingersoll Rand	3532.55	3187.45	10.83	87953
Shree Rama News	22.43	20.28	10.6	244385
Shree Pushkar	307.8	278.65	10.46	168443

* the % price rise of the last 3 days

Nifty 50 stocks - Summary Details											
Symbol	LTP	Chng	% Chng	Volume (lacs)	Turnover (crs.)	52w High	Diff with 52w H	52w Low	Diff with 52w L	365 days % chng	30 days % chng
NIFTY 50	23031.40	-13.85	-0.06%	2657.07	25218.74	26277.35	12.35%	21281.45	8.22%	-0.18%	5.99%
ADANIENT	2237.45	-116.00	-4.93%	25.52	585.98	3743.90	40.24%	2025.00	10.49%	5.77%	-25.96%
ADANIPTS	1107.90	-21.05	-1.86%	37.64	426.80	1621.40	31.67%	995.65	11.27%	5.84%	-10.74%
APOLLOHOSP	6365.95	-8.60	-0.13%	6.36	405.94	7545.35	15.63%	5693.20	11.82%	-6.80%	-5.13%
ASIANPAINT	2232.00	3.75	0.17%	9.22	206.21	3394.90	34.25%	2185.70	2.12%	-1.08%	-25.02%
AXISBANK	1008.50	1.60	0.16%	63.48	641.33	1339.65	24.72%	933.50	8.03%	-4.04%	-5.96%
BAJAJ-AUTO	8665.50	-46.10	-0.53%	2.07	180.22	12774.00	32.16%	7811.95	10.93%	1.34%	10.03%
BAJAJFINSV	1842.35	53.65	3.00%	40.70	748.44	2029.90	9.24%	1419.05	29.83%	6.84%	14.08%
BAJFINANCE	8401.00	186.95	2.28%	18.00	1513.81	8662.80	3.02%	6187.80	35.77%	14.87%	24.39%
BEL	261.15	2.00	0.77%	180.17	473.59	340.50	23.30%	171.75	52.05%	-0.17%	46.74%
BHARTIARTL	1710.60	-0.95	-0.06%	53.56	919.90	1779.00	3.84%	1097.65	55.84%	7.16%	53.11%
BPCL	255.45	-0.15	-0.06%	55.15	142.00	376.00	32.06%	242.20	5.47%	-3.66%	-56.26%
BRITANNIA	4874.00	-44.30	-0.90%	3.42	167.70	6469.90	24.67%	4641.00	5.02%	-0.18%	-1.27%
CIPLA	1474.80	25.60	1.77%	18.80	278.42	1702.05	13.35%	1317.25	11.96%	0.69%	-0.59%
COALINDIA	361.60	1.25	0.35%	37.12	134.97	543.55	33.47%	351.55	2.86%	-0.70%	-20.34%
DRREDDY	1222.80	6.95	0.57%	44.47	544.56	1421.49	13.98%	1120.00	9.18%	-8.93%	-80.81%
EICHERMOT	4808.05	-41.40	-0.85%	5.72	277.36	5575.50	13.76%	3672.00	30.94%	-1.82%	25.82%
GRASIM	2477.05	-7.90	-0.32%	7.09	177.60	2877.75	13.92%	2027.50	22.17%	8.60%	20.39%
HCLTECH	1704.80	-12.50	-0.73%	18.38	314.88	2012.20	15.28%	1235.00	38.04%	-13.68%	3.10%
HDFCBANK	1698.95	-7.85	-0.46%	63.01	1073.02	1880.00	9.63%	1363.55	24.60%	4.66%	22.40%
HDFCLIFE	629.30	0.15	0.02%	28.08	177.58	761.20	17.33%	511.40	23.05%	4.90%	6.72%
HEROMOTOCO	3952.05	-63.70	-1.59%	5.57	221.77	6246.25	36.73%	3945.10	0.18%	-0.69%	-15.37%
HINDALCO	604.40	5.50	0.92%	44.15	265.96	772.65	21.78%	496.35	21.77%	6.24%	17.41%
HINDUNILVR	2319.60	-12.90	-0.55%	13.35	310.83	3035.00	23.57%	2172.05	6.79%	-4.83%	-2.57%
ICICIBANK	1248.50	-3.30	-0.26%	72.64	911.32	1362.35	8.36%	1000.30	24.81%	1.79%	22.75%
INDUSINDBK	1049.95	10.30	0.99%	45.40	474.75	1576.35	33.39%	923.70	13.67%	10.40%	-28.98%
INFY	1840.65	-22.50	-1.21%	52.38	969.61	2006.45	8.26%	1358.35	35.51%	-5.05%	10.60%
ITC	410.00	0.10	0.02%	129.89	534.03	528.50	22.42%	399.35	2.67%	-6.64%	0.77%
JSWSTEEL	970.40	14.00	1.46%	14.15	137.77	1063.00	8.71%	761.75	27.39%	8.22%	17.69%
KOTAKBANK	1964.75	20.80	1.07%	126.78	2506.43	1992.80	1.41%	1543.85	27.26%	11.82%	11.90%
LT	3255.00	-34.65	-1.05%	21.28	697.38	3963.50	17.88%	3175.05	2.52%	-5.04%	-0.96%
M&M	2979.95	-7.25	-0.24%	24.82	745.41	3270.95	8.90%	1623.45	83.56%	-0.42%	81.40%
MARUTI	12673.00	17.45	0.14%	1.87	236.61	13680.00	7.36%	10640.15	19.11%	10.07%	17.24%
NESTLEIND	2172.90	-20.85	-0.95%	5.11	111.78	2778.00	21.78%	2131.25	1.95%	-1.95%	-10.73%
NTPC	306.85	0.60	0.20%	90.87	278.59	448.45	31.58%	296.85	3.37%	2.70%	-4.76%
ONGC	235.30	-2.10	-0.88%	100.79	238.28	345.00	31.80%	223.00	5.52%	-7.17%	-8.52%
POWERGRID	259.10	2.05	0.80%	122.57	318.11	366.25	29.26%	254.00	2.01%	-10.62%	-4.88%
RELIANCE	1216.20	-0.35	-0.03%	85.11	1038.02	1608.80	24.40%	1193.35	1.91%	-1.88%	-58.48%
SBILIFE	1467.35	15.20	1.05%	9.83	144.57	1936.00	24.21%	1307.70	12.21%	-1.04%	-1.05%
SBIN	726.80	-6.35	-0.87%	123.71	905.32	912.00	20.31%	702.15	3.51%	0.50%	2.76%
SHRIRAMFIN	548.00	0.85	0.16%	57.23	315.69	730.45	24.98%	438.60	24.94%	5.00%	-76.52%
SUNPHARMA	1745.00	51.15	3.02%	27.50	477.90	1960.35	10.99%	1377.20	26.71%	-3.04%	9.83%
TATACONSUM	1019.90	-9.85	-0.96%	11.69	120.25	1256.44	18.83%	882.90	15.52%	6.66%	-9.50%
TATAMOTORS	683.00	-1.35	-0.20%	84.91	583.08	1179.00	42.07%	667.05	2.39%	-8.87%	-24.54%
TATASTEEL	136.41	4.13	3.12%	520.36	708.06	184.60	26.11%	122.62	11.25%	7.61%	-4.04%
TCS	3920.00	-30.15	-0.76%	22.77	895.16	4592.25	14.64%	3591.50	9.15%	-7.95%	-4.80%
TECHM	1680.00	-0.20	-0.01%	15.55	260.49	1807.70	7.06%	1162.95	44.46%	1.24%	26.48%
TITAN	3230.50	-24.95	-0.77%	7.27	236.18	3867.00	16.46%	3055.65	5.72%	-3.76%	-8.55%
TRENT	5250.00	12.70	0.24%	9.86	522.25	8345.00	37.09%	3750.25	39.99%	-15.86%	35.99%
ULTRACEMCO	11506.30	27.80	0.24%	3.36	388.92	12145.35	5.26%	9250.00	24.39%	8.13%	16.50%
WIPRO	309.00	-1.20	-0.39%	88.33	273.91	324.60	4.81%	208.50	48.20%	6.29%	-39.37%

Disclaimer / Disclosures

ANALYST CERTIFICATION

I, Mrs. Vaishali Parekh B.com, Research Analyst, author and the name subscribed to this report, hereby certify that all of the views expressed in this research report accurately reflect our views about the subject issuer(s) or securities. We also certify that no part of our compensation was, is, or will be directly or indirectly related to the specific recommendation(s) or view(s) in this report.

Terms & conditions and other disclosures:

Prabhudas Lilladher Pvt. Ltd, Mumbai, India (hereinafter referred to as "PL") is engaged in the business of Stock Broking, Portfolio Manager, Depository Participant and distribution for third party financial products. PL is a subsidiary of Prabhudas Lilladher Advisory Services Pvt Ltd. which has its various subsidiaries engaged in business of commodity broking, investment banking, financial services (margin funding) and distribution of third party financial/other products, details in respect of which are available at www.plindia.com

This document has been prepared by the Research Division of PL and is meant for use by the recipient only as information and is not for circulation. This document is not to be reported or copied or made available to others without prior permission of PL. It should not be considered or taken as an offer to sell or a solicitation to buy or sell any security.

The information contained in this report has been obtained from sources that are considered to be reliable. However, PL has not independently verified the accuracy or completeness of the same. Neither PL nor any of its affiliates, its directors or its employees accepts any responsibility of whatsoever nature for the information, statements and opinion given, made available or expressed herein or for any omission therein.

Recipients of this report should be aware that past performance is not necessarily a guide to future performance and value of investments can go down as well. The suitability or otherwise of any investments will depend upon the recipient's particular circumstances and, in case of doubt, advice should be sought from an independent expert/advisor.

Either PL or its affiliates or its directors or its employees or its representatives or its clients or their relatives may have position(s), make market, act as principal or engage in transactions of securities of companies referred to in this report and they may have used the research material prior to publication.

PL may from time to time solicit or perform investment banking or other services for any company mentioned in this document.

PL is registered as Research Analyst under Securities and Exchange Board of India (Research Analysts) Regulations, 2014 PL submits that no material disciplinary action has been taken on us by any Regulatory Authority impacting Equity Research Analysis activities.

PL or its research analysts or its associates or his relatives do not have any financial interest in the subject company.

PL or its research analysts or its associates or his relatives do not have actual/beneficial ownership of one per cent or more securities of the subject company at the end of the month immediately preceding the date of publication of the research report.

PL or its research analysts or its associates or his relatives do not have any material conflict of interest at the time of publication of the research report.

PL or its associates might have received compensation from the subject company in the past twelve months.

PL or its associates might have managed or co-managed public offering of securities for the subject company in the past twelve months or mandated by the subject company for any other assignment in the past twelve months.

PL or its associates might have received any compensation for investment banking or merchant banking or brokerage services from the subject company in the past twelve months.

PL or its associates might have received any compensation for products or services other than investment banking or merchant banking or brokerage services from the subject company in the past twelve months PL or its associates might have received any compensation or other benefits from the subject company or third party in connection with the research report.

PL encourages independence in research report preparation and strives to minimize conflict in preparation of research report. PL or its analysts did not receive any compensation or other benefits from the subject Company or third party in connection with the preparation of the research report. PL or its Research Analysts do not have any material conflict of interest at the time of publication of this report.

It is confirmed that Mrs.Vaishali Parekh B.com, Research Analyst of this report has not received any compensation from the companies mentioned in the report in the preceding twelve months compensation of our Research Analysts is not based on any specific merchant banking, investment banking or brokerage service transactions.

The Research analysts for this report certifies that all of the views expressed in this report accurately reflect his or her personal views about the subject company or companies and its or their securities, and no part of his or her compensation was, is or will be, directly or indirectly related to specific recommendations or views expressed in this report.

The research analysts for this report has not served as an officer, director or employee of the subject company PL or its research analysts have not engaged in market making activity for the subject company

Our sales people, traders, and other professionals or affiliates may provide oral or written market commentary or trading strategies to our clients that reflect opinions that are contrary to the opinions expressed herein, and our proprietary trading and investing businesses may make investment decisions that are inconsistent with the recommendations expressed herein. In reviewing these materials, you should be aware that any or all of the foregoing, among other things, may give rise to real or potential conflicts of interest.

PL and its associates, their directors and employees may (a) from time to time, have a long or short position in, and buy or sell the securities of the subject company or (b) be engaged in any other transaction involving such securities and earn brokerage or other compensation or act as a market maker in the financial instruments of the subject company or act as an advisor or lender/borrower to the subject company or may have any other potential conflict of interests with respect to any recommendation and other related information and opinions.