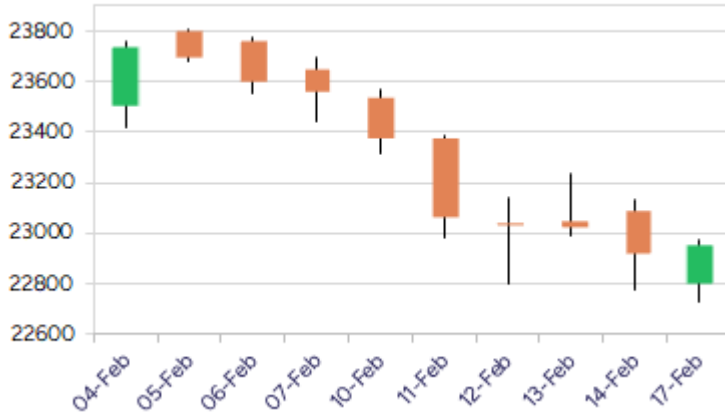


* Sensex 75939.21 + 57.65

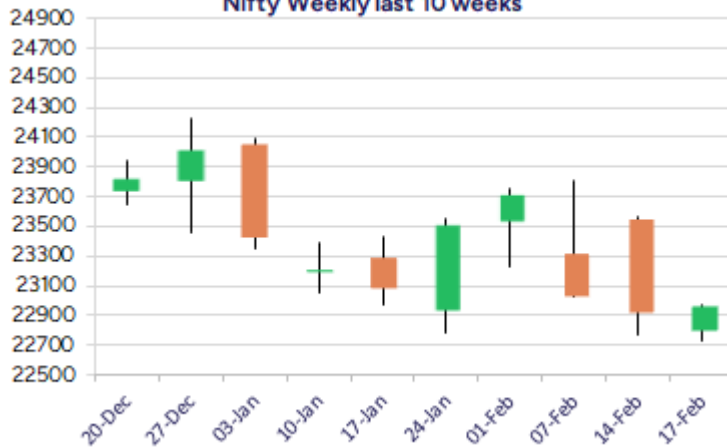
* Nifty 22959.50 + 30.25

* Bank Nifty 49258.90 + 159.45

Nifty daily last 10 days



Nifty Weekly last 10 weeks



*Blue candle → Close rate > Open rate * Red candle → Close rate < Open rate

Market Preview

Nifty sustains 22800 zone amid volatility

Nifty, amid volatility, managed to move above the crucial support zone of 22800 levels on 3 occasions keeping an optimistic view to end near 22950 level. BankNifty on the back of HDFC Bank, closed in the green recovering from the low of 48500 zone to improve the bias to some extent. The advance decline ended on a weak note with a ratio of 2:3 at close.

Market Forecast

Nifty daily range 22800-23200

Nifty in the morning session breached below the important 22800 zone but recovered significantly to move past the 22900 level with bias improving to some extent with participation picking up from the broader markets as well. Attempts has been made to breach below the 22800 zone but has managed to sustain as of now to keep hope alive and anticipate for further upward move and with a decisive close above 23500 zone shall improve the bias and sentiment to some extent.

BankNifty, amid the volatile session hit the low near 48525 level, but witnessed a positive pullback to end near 49250 zone with HDFC Bank and SBI picking up to lead the index and further a move past the near-term resistance barrier of 49800 shall improve the bias to some extent. The index needs to sustain the near-term support zone of 48500 level and on the upside once a decisive close above the 50EMA level of 50000 is confirmed, there can be some conviction for further rise in the coming days.

The support for the day is seen at 22800 levels while the resistance is seen at 23200 levels. BankNifty would have the daily range of 48800-49800 levels.

Indices	Period	Closing	% Chng	Trend	Reversal	2 Sup	1 Sup	Pivot	1 Res	2 Res
Nifty	Daily	22959.50	0.13%	-6	23062.55	22638	22799	22886	23047	23135
	Weekly	22929.25	-2.68%	-1	23209.30	22297	22613	23091	23407	23885
	Monthly	23508.40	-0.58%	-4	26209.65	22068	22788	23507	24228	24947
Bank Nifty	Daily	49258.90	0.32%	-6	49448.15	48241	48750	49035	49543	49828
	Weekly	49099.45	-2.11%	-1	49065.75	47889	48494	49325	49930	50761
	Monthly	49587.20	-2.50%	-4	53427.15	45873	47730	49701	51559	53530
Sensex	Daily	75996.86	0.08%	-6	76322.35	75031	75514	75778	76261	76525
	Weekly	75939.21	-2.47%	-1	76750.60	73931	74935	76392	77396	78854
	Monthly	77500.57	-0.82%	-4	85623.60	72808	75154	77614	79960	82419

Daily Trend turned Up

Scrip Name	LCP	Curr Trnd	Reversal
AJANTPHARM	2660.75	-7	2543.7
ALKEM	4794.3	-5	4757.8
ASIANPAINT	2250.85	-8	2241.7
ASTRAL	1384.5	-7	1367.35
AUROPHARMA	1169.6	-1	1153.95
BALKRISIND	2670.55	-7	2653.9
BALRAMCHIN	443.1	-6	438.2
CESC	125.92	-6	125.25
CHAMBLFERT	542.8	-4	541.25
CIPLA	1474.65	-1	1462.85
CONCOR	703.35	-7	688.15
GLAXO	2340.25	-3	2091.2

* Trends turned Up after a significant period

Daily Trend turned Up

Scrip Name	LCP	Curr Trnd	Reversal
GODREJIND	824.95	-6	814.35
HDFCBANK	1717.35	-5	1712.4
IGL	190.25	-2	187.1
JSWSTEELLTD	973.55	-1	967.05
JUBLFOOD	681.65	-7	661.55
JUBLPHARMA	995.45	-4	988.15
KSCL	972.85	-2	965.4
NESTLEIND	2216.5	-8	2200.05
POWERGRID	263.2	-10	259.8
SUNPHARMA	1714.2	-1	1704.3
SYNGENE	700.9	-5	700.9
TATAMOTORS	686.6	-5	685.05

* Trends turned Up after a significant period

Gainers - Losers (Nifty 500 Stocks)

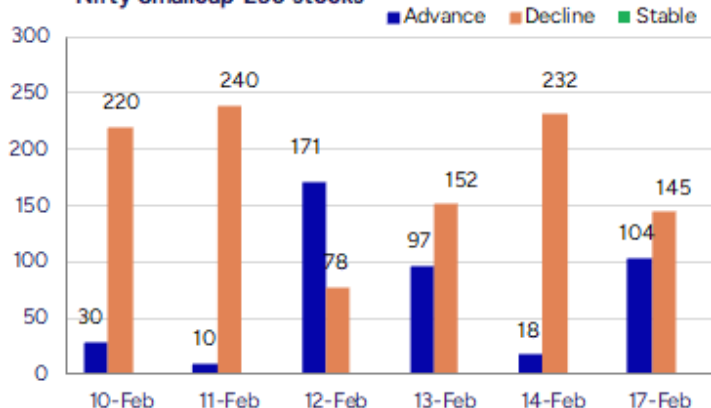
Gainers

Scrip Name	LCP	% Change	Volume
Hindprakash Ind	115.83	1	8055
Sandur Manganes	414.6	20	2347917
Reliable Data S	81.22	19.99	132313
Indian Hume	342.1	17.97	402857
Godfrey Phillip	7038	17.31	3059383
Pennar Inds	168.05	16.65	5071246
GlaxoSmithKline	2340.25	15.97	3107713

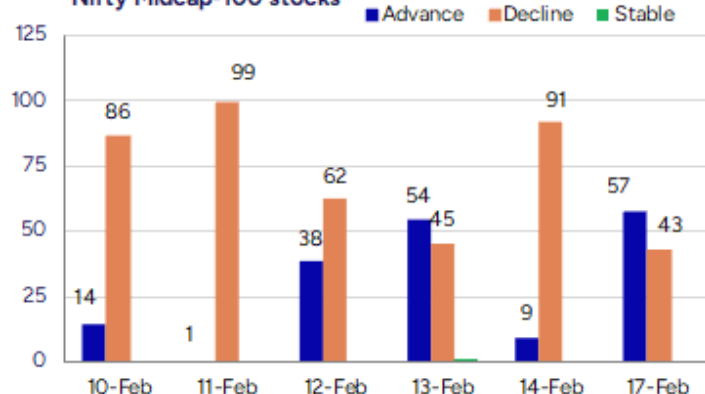
Losers

Scrip Name	LCP	% Change	Volume
DEE Development	200.65	-20	1427784
Macpower	782.8	-20	282316
Best Agrolife	331.7	-20	392265
Zen Tech	1080	-20	1480862
Pix Transmis	1451.45	-19.91	276138
Magellanic	57.57	-19.43	1173699
Somi Conveyor	135.89	-18.06	118587

Nifty Smallcap-250 stocks



Nifty Midcap-100 stocks



Nifty Daily chart with RSI indicator



BankNifty Daily chart with RSI indicator



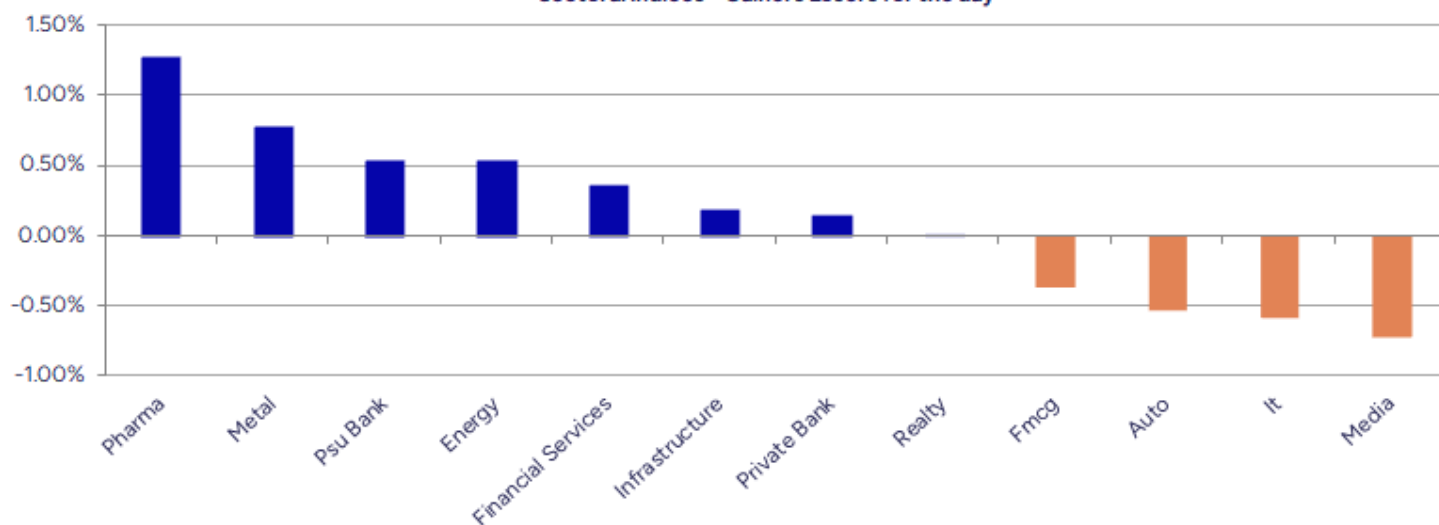
Breakouts - Cross above 200 DMA			
Company Name	LCP	Change %	200 DMA
Reliable Data S	81.22	8.93	74.56
Dishman Carbogeo	220.18	6.75	206.25
Alpa Labs	110.93	4.25	106.41
DOMS Industries	2569.9	4.19	2466.58
Jubilant Pharmo	995.45	4.17	955.58
Golden Tobacco	42.66	3.67	41.15
Manappuram Fin	193.29	2.74	188.13
ANI Integrated	126.9	2.62	123.66
Kaveri Seed	972.85	2.41	949.99
Nacl Industries	63.31	2.24	61.92
Abbott India	28569.5	1.78	28069.83
Lupin	2026.95	1.26	2001.72
Tainwala Chem	234.05	1.13	231.43
Epigral	1807.35	1.06	1788.31
GeeCee Ventures	394.3	0.89	390.81
Hubtown	240.1	0.43	239.08
Mangalam Worldw	150.5	0.39	149.91
DIC India	637.9	15.00%	636.93

* Stocks crossing above its Simple Moving Average (200DMA)

Breakdown - Cross below 200 DMA			
Company Name	LCP	Change %	200 DMA
Pix Transmis	1451.45	-16.66	1741.55
Jindal PolyFilm	712.1	-8.31	776.66
PTC Industries	11927.35	-7.33	12870.8
Dhunseri Invest	1671.7	-5.89	1776.24
Shiva Texyarn	191.16	-5.15	201.53
Regency Ceramic	54.98	-4.66	57.67
Radico Khaitan	1950.45	-4.23	2036.66
Tirupati Forge	35.72	-3.80	37.13
Chaman Lal Seti	273.95	-3.79	284.74
Gujarat Apollo	301.65	-3.64	313.05
Ram Ratna Wires	501.65	-3.64	520.62
Bliss GVS	125.92	-3.24	130.14
Genesys Int	727.6	-2.99	750.03
TT	12.63	-2.85	13
Brooks Labs	123.87	-2.73	127.35
Commercial Syn	69.05	-2.54	70.85
Mazagon	2083.1	-2.44	2135.26
Pil Italica	13.37	-2.05	13.65

* Stocks crossing below its Simple Moving Average (200DMA)

Sectoral Indices - Gainers Losers for the day



Stocks witnessing a volume surge as compared to their 5 day average volur

Watch out for the stocks that have seen a huge spurt in its share price over the last three days

Volume Shockers - NSE					
Company name	LCP	% Chg	Volume	Avg Vol *	% Chg
Macpower	782.8	-20	281888	7721	3551
GlaxoSmithKline	2360	16.95	3100576	119715	2490
Senco Gold	330.85	-7.48	7672510	304379	2421
Digjam	40.96	-5.01	66414	2744	2320
BEW Engineering	165.85	-0.9	26500	1125	2256
Dolphin Offshor	254	-4.99	49340	2253	2090
Somi Conveyor	134	-19.2	117694	5503	2039
Krishna Institu	564.45	-2.91	1144316	59456	1825
Sandur Manganes	414.6	20	2347841	130587	1698
A B Infrabuild	80.5	-5.61	271455	15200	1686
Cool Caps	845.1	3.76	136000	8400	1519
Redington	242.56	-1.1	14305877	939548	1423
Aegis Logistics	692.95	-3.39	5504872	383595	1335
Reliable Data S	81.22	19.99	132312	9729	1260
Nitiraj Enginee	303.09	11.05	472888	34855	1257
Oneclick Logi.	123.95	9.01	57600	4320	1233
Jash Engineerin	526.55	-2.54	304038	26774	1036
Precot	470	0.72	40047	3752	967
Sky Gold	369.5	0.75	274709	25989	957
Jindal Drilling	888	6.32	366855	34855	953

* the Average Volume of last 5 days

Price Shockers - NSE				
Company name	LCP	3 days *	% Chg	Volume
Nitiraj Enginee	303.01	213.56	41.89	485152
Godfrey Phillip	7038	5463	28.83	3059604
Reliable Data S	81.22	65.65	23.72	132313
TCPL Packaging	3757.6	3186.6	17.92	45045
Sandur Manganes	414.6	354.45	16.97	2348157
Norben Tea	38.36	33.15	15.72	11815
DC Infotech	302.45	261.45	15.68	15140
Texmo Pipes	60.3	52.15	15.63	377643
GlaxoSmithKline	2340.25	2030.55	15.25	3107944
Jalan Transolut	12.4	10.8	14.81	93000
Indian Hume	342.1	303.35	12.77	403168
Pennar Inds	168.05	149.17	12.66	5071564

* the % price rise of the last 3 days

Nifty 50 stocks - Summary Details											
Symbol	LTP	Chng	% Chng	Volume (lacs)	Turnover (crs.)	52w High	Diff with 52w H	52w Low	Diff with 52w L	365 days % chng	30 days % chng
NIFTY 50	22959.50	30.25	0.13%	2073.94	19809.35	26277.35	12.63%	21281.45	7.89%	-1.18%	4.03%
ADANIANT	2237.30	84.65	3.93%	14.00	305.31	3743.90	40.24%	2025.00	10.48%	-10.30%	-33.22%
ADANIPTS	1085.10	22.40	2.11%	25.19	269.47	1621.40	33.08%	995.65	8.98%	-8.66%	-18.68%
APOLLOHOSP	6295.00	24.50	0.39%	4.82	301.70	7545.35	16.57%	5693.20	10.57%	-8.17%	-5.00%
ASIANPAINT	2249.50	18.20	0.82%	9.24	207.70	3394.90	33.74%	2185.70	2.92%	-1.31%	-25.82%
AXISBANK	995.00	-2.50	-0.25%	71.67	706.56	1339.65	25.73%	933.50	6.59%	0.65%	-6.67%
BAJAJ-AUTO	8527.55	21.05	0.25%	2.24	190.45	12774.00	33.24%	7890.00	8.08%	-0.87%	2.18%
BAJAJFINSV	1890.05	48.75	2.65%	30.23	567.38	2029.90	6.89%	1419.05	33.19%	9.56%	16.84%
BAJFINANCE	8425.05	32.75	0.39%	8.63	726.17	8662.80	2.74%	6187.80	36.16%	16.85%	26.79%
BEL	249.65	-0.70	-0.28%	249.47	615.52	340.50	26.68%	179.10	39.39%	-11.27%	32.95%
BHARTIARTL	1676.50	-40.55	-2.36%	49.06	827.68	1779.00	5.76%	1097.65	52.74%	5.50%	53.31%
BPCL	252.90	1.90	0.76%	59.00	147.74	376.00	32.74%	242.20	4.42%	-8.26%	-61.66%
BRITANNIA	4952.60	12.95	0.26%	2.75	136.01	6469.90	23.45%	4641.00	6.71%	1.76%	0.53%
CIPLA	1473.95	14.50	0.99%	11.14	163.88	1702.05	13.40%	1317.25	11.90%	1.19%	1.30%
COALINDIA	360.10	5.90	1.67%	60.18	214.84	543.55	33.75%	349.25	3.11%	-8.63%	-26.21%
DRREDDY	1199.40	2.35	0.20%	6.13	73.24	1421.49	15.62%	1120.00	7.09%	-8.58%	-81.05%
EICHERMOT	4754.00	50.65	1.08%	2.32	109.46	5575.50	14.73%	3672.00	29.47%	-6.16%	19.72%
GRASIM	2460.00	28.70	1.18%	6.47	158.77	2877.75	14.52%	2072.80	18.68%	2.33%	15.47%
HCLTECH	1709.60	-1.65	-0.10%	11.27	192.47	2012.20	15.04%	1235.00	38.43%	-4.34%	2.63%
HDFCBANK	1719.00	24.15	1.42%	64.69	1101.19	1880.00	8.56%	1384.35	24.17%	3.55%	19.36%
HDFCLIFE	624.00	-2.20	-0.35%	18.61	115.46	761.20	18.02%	511.40	22.02%	-2.49%	5.70%
HEROMOTOCO	3870.00	7.60	0.20%	9.14	348.40	6246.25	38.04%	3757.65	2.99%	-5.75%	-21.08%
HINDALCO	610.05	3.85	0.64%	44.70	269.75	772.65	21.04%	499.00	22.25%	-1.75%	17.55%
HINDUNILVR	2326.00	7.65	0.33%	14.09	326.98	3035.00	23.36%	2172.05	7.09%	-1.51%	-2.40%
ICICIBANK	1251.65	-8.45	-0.67%	83.86	1043.98	1362.35	8.13%	1006.60	24.34%	2.83%	23.15%
INDUSINDBK	1050.30	25.90	2.53%	27.96	290.81	1576.35	33.37%	923.70	13.71%	5.50%	-31.42%
INFY	1843.05	-13.35	-0.72%	44.29	814.32	2006.45	8.14%	1358.35	35.68%	2.26%	9.09%
ITC	408.60	-1.65	-0.40%	119.75	489.74	528.50	22.69%	399.35	2.32%	-6.80%	1.40%
JSWSTEEL	973.80	9.20	0.95%	13.21	127.67	1063.00	8.39%	761.75	27.84%	6.16%	17.64%
KOTAKBANK	1941.80	-10.60	-0.54%	23.00	447.19	1992.80	2.56%	1543.85	25.78%	11.02%	12.51%
LT	3222.00	-15.65	-0.48%	19.67	632.70	3963.50	18.71%	3175.05	1.48%	-9.28%	-4.40%
M&M	2841.00	-101.60	-3.45%	47.73	1348.51	3270.95	13.14%	1668.10	70.31%	0.87%	60.31%
MARUTI	12759.95	79.70	0.63%	1.92	243.89	13680.00	6.73%	10725.00	18.97%	4.48%	11.42%
NESTLEIND	2213.95	18.10	0.82%	8.02	176.39	2778.00	20.30%	2131.25	3.88%	-0.96%	-11.73%
NTPC	302.20	1.85	0.62%	64.64	193.77	448.45	32.61%	292.80	3.21%	-7.91%	-11.07%
ONGC	234.00	3.50	1.52%	66.92	154.94	345.00	32.17%	223.00	4.93%	-13.53%	-16.09%
POWERGRID	263.10	5.75	2.23%	83.33	216.84	366.25	28.16%	252.20	4.32%	-14.95%	-6.26%
RELIANCE	1225.45	8.20	0.67%	81.67	996.02	1608.80	23.83%	1193.35	2.69%	-6.53%	-58.33%
SBILIFE	1474.15	8.70	0.59%	7.17	105.77	1936.00	23.86%	1307.70	12.73%	-4.87%	-2.85%
SBIN	727.90	5.75	0.80%	90.94	656.25	912.00	20.19%	711.55	2.30%	-5.49%	-4.31%
SHRIRAMFIN	550.45	11.30	2.10%	43.98	239.02	730.45	24.64%	438.60	25.50%	2.40%	-77.99%
SUNPHARMA	1711.15	10.65	0.63%	22.78	391.10	1960.35	12.71%	1377.20	24.25%	-4.82%	12.62%
TATACONSUM	1021.70	-0.85	-0.08%	9.25	94.11	1256.44	18.68%	882.90	15.72%	7.13%	-10.89%
TATAMOTORS	686.95	6.30	0.93%	103.14	705.28	1179.00	41.73%	667.05	2.98%	-12.71%	-27.48%
TATASTEEL	134.31	-0.16	-0.12%	211.90	282.42	184.60	27.24%	122.62	9.53%	3.22%	-5.50%
TCS	3908.00	-26.85	-0.68%	18.00	704.04	4592.25	14.90%	3591.50	8.81%	-4.59%	-4.69%
TECHM	1665.95	6.85	0.41%	11.14	184.62	1807.70	7.84%	1162.95	43.25%	-0.07%	27.37%
TITAN	3226.60	13.35	0.42%	7.13	229.24	3867.00	16.56%	3055.65	5.59%	-4.29%	-12.10%
TRENT	5100.00	-17.35	-0.34%	10.78	547.67	8345.00	38.89%	3750.25	35.99%	-17.68%	27.15%
ULTRACEMCO	11464.15	200.30	1.78%	1.66	188.26	12145.35	5.61%	9250.00	23.94%	6.46%	13.59%
WIPRO	306.10	-2.00	-0.65%	75.08	228.65	324.60	5.70%	208.50	46.81%	9.27%	-43.26%

Disclaimer / Disclosures

ANALYST CERTIFICATION

I, Mrs. Vaishali Parekh B.com, Research Analyst, author and the name subscribed to this report, hereby certify that all of the views expressed in this research report accurately reflect our views about the subject issuer(s) or securities. We also certify that no part of our compensation was, is, or will be directly or indirectly related to the specific recommendation(s) or view(s) in this report.

Terms & conditions and other disclosures:

Prabhudas Lilladher Pvt. Ltd, Mumbai, India (hereinafter referred to as "PL") is engaged in the business of Stock Broking, Portfolio Manager, Depository Participant and distribution for third party financial products. PL is a subsidiary of Prabhudas Lilladher Advisory Services Pvt Ltd. which has its various subsidiaries engaged in business of commodity broking, investment banking, financial services (margin funding) and distribution of third party financial/other products, details in respect of which are available at www.plindia.com

This document has been prepared by the Research Division of PL and is meant for use by the recipient only as information and is not for circulation. This document is not to be reported or copied or made available to others without prior permission of PL. It should not be considered or taken as an offer to sell or a solicitation to buy or sell any security.

The information contained in this report has been obtained from sources that are considered to be reliable. However, PL has not independently verified the accuracy or completeness of the same. Neither PL nor any of its affiliates, its directors or its employees accepts any responsibility of whatsoever nature for the information, statements and opinion given, made available or expressed herein or for any omission therein.

Recipients of this report should be aware that past performance is not necessarily a guide to future performance and value of investments can go down as well. The suitability or otherwise of any investments will depend upon the recipient's particular circumstances and, in case of doubt, advice should be sought from an independent expert/advisor.

Either PL or its affiliates or its directors or its employees or its representatives or its clients or their relatives may have position(s), make market, act as principal or engage in transactions of securities of companies referred to in this report and they may have used the research material prior to publication.

PL may from time to time solicit or perform investment banking or other services for any company mentioned in this document.

PL is registered as Research Analyst under Securities and Exchange Board of India (Research Analysts) Regulations, 2014 PL submits that no material disciplinary action has been taken on us by any Regulatory Authority impacting Equity Research Analysis activities.

PL or its research analysts or its associates or his relatives do not have any financial interest in the subject company.

PL or its research analysts or its associates or his relatives do not have actual/beneficial ownership of one per cent or more securities of the subject company at the end of the month immediately preceding the date of publication of the research report.

PL or its research analysts or its associates or his relatives do not have any material conflict of interest at the time of publication of the research report.

PL or its associates might have received compensation from the subject company in the past twelve months.

PL or its associates might have managed or co-managed public offering of securities for the subject company in the past twelve months or mandated by the subject company for any other assignment in the past twelve months.

PL or its associates might have received any compensation for investment banking or merchant banking or brokerage services from the subject company in the past twelve months.

PL or its associates might have received any compensation for products or services other than investment banking or merchant banking or brokerage services from the subject company in the past twelve months PL or its associates might have received any compensation or other benefits from the subject company or third party in connection with the research report.

PL encourages independence in research report preparation and strives to minimize conflict in preparation of research report. PL or its analysts did not receive any compensation or other benefits from the subject Company or third party in connection with the preparation of the research report. PL or its Research Analysts do not have any material conflict of interest at the time of publication of this report.

It is confirmed that Mrs.Vaishali Parekh B.com, Research Analyst of this report has not received any compensation from the companies mentioned in the report in the preceding twelve months compensation of our Research Analysts is not based on any specific merchant banking, investment banking or brokerage service transactions.

The Research analysts for this report certifies that all of the views expressed in this report accurately reflect his or her personal views about the subject company or companies and its or their securities, and no part of his or her compensation was, is or will be, directly or indirectly related to specific recommendations or views expressed in this report.

The research analysts for this report has not served as an officer, director or employee of the subject company PL or its research analysts have not engaged in market making activity for the subject company

Our sales people, traders, and other professionals or affiliates may provide oral or written market commentary or trading strategies to our clients that reflect opinions that are contrary to the opinions expressed herein, and our proprietary trading and investing businesses may make investment decisions that are inconsistent with the recommendations expressed herein. In reviewing these materials, you should be aware that any or all of the foregoing, among other things, may give rise to real or potential conflicts of interest.

PL and its associates, their directors and employees may (a) from time to time, have a long or short position in, and buy or sell the securities of the subject company or (b) be engaged in any other transaction involving such securities and earn brokerage or other compensation or act as a market maker in the financial instruments of the subject company or act as an advisor or lender/borrower to the subject company or may have any other potential conflict of interests with respect to any recommendation and other related information and opinions.