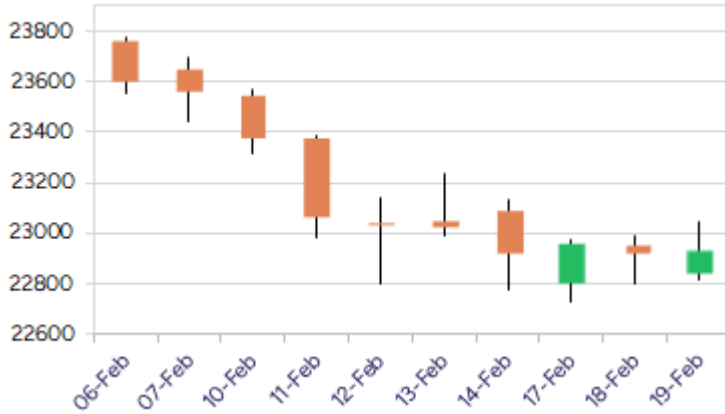


* Sensex 75939.18 -28.21

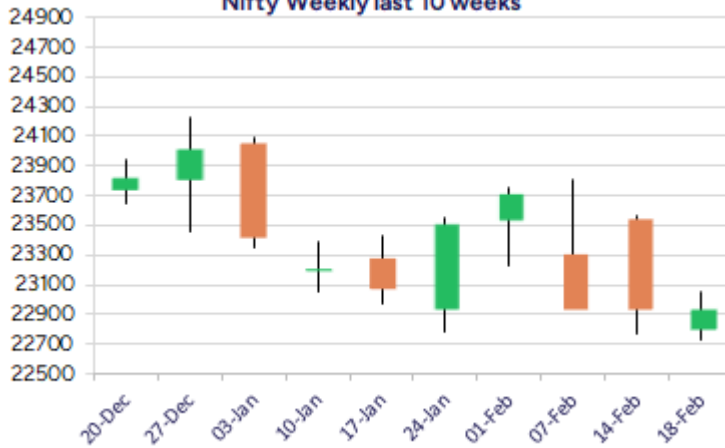
* Nifty 22932.90 -12.40

* Bank Nifty 49570.10 +482.80

Nifty daily last 10 days



Nifty Weekly last 10 weeks



*Blue candle → Close rate > Open rate * Red candle → Close rate < Open rate

Market Preview

Nifty ends flat; sentiment eases out

Nifty reached the 23000 level after a long time but could not breach above with the morning session once again witnessing a strong bounce back from 22800 zone. BankNifty has indicated a strong optimistic move to close near the 49600 level anticipating for further rise. The market breadth has been strong with the advance decline ratio indicating 4:1 ratio at close.

Market Forecast

Nifty daily range 22800-23200

Nifty once again recovered strongly from the 22800 zone and touched the 23000 level failing to breach above the zone and closed on a flat note with bias and sentiment slightly easing out with active participation witnessed from the broader markets. As said earlier, a decisive move past the 23350 zone shall confirm a positive breakout above the descending channel pattern on the daily chart which shall establish conviction for further rise in the coming days.

BankNifty, after a long wait witnessed a significant gain with a positive bullish candle formation on the daily chart to turn the daily trend up after 7 sessions improving the bias to some extent and anticipating for further rise in the coming sessions. As mentioned earlier, the index would need a decisive close above the 50EMA level of 50000 to establish conviction and thereafter, expect for fresh upward move with targets of 51700 and 52500 levels visible in the coming days.

The support for the day is seen at 22800 levels while the resistance is seen at 23200 levels. BankNifty would have the daily range of 49200-50000 levels.

Indices	Period	Closing	% Chng	Trend	Reversal	2 Sup	1 Sup	Pivot	1 Res	2 Res
Nifty	Daily	22932.90	-0.05%	-8	22956.00	22697	22815	22933	23050	23168
	Weekly	22929.25	-2.68%	-1	23209.30	22297	22613	23091	23407	23885
	Monthly	23508.40	-0.58%	-4	26209.65	22068	22788	23507	24228	24947
Bank Nifty	Daily	49570.10	0.98%	1	49229.60	48510	49040	49334	49864	50158
	Weekly	49099.45	-2.11%	-1	49065.75	47889	48494	49325	49930	50761
	Monthly	49587.20	-2.50%	-4	53427.15	45873	47730	49701	51559	53530
Sensex	Daily	75939.18	-0.04%	-8	75999.30	75196	75567	75953	76325	76710
	Weekly	75939.21	-2.47%	-1	76750.60	73931	74935	76392	77396	78854
	Monthly	77500.57	-0.82%	-4	85623.60	72808	75154	77614	79960	82419

Daily Trend turned Up

Scrip Name	LCP	Curr Trnd	Reversal
ARVIND	339.7	-6	322.35
AXISBANK	1011.35	-6	999.75
BEL	253.4	-9	251.7
BHEL	195.09	-7	193.05
BSE	5631	-6	5234.65
DLF	690.15	-7	678.45
ENGINEERSIN	168.29	-3	160.4
ESCORTS	3020.1	-13	2998.65
EXIDEIND	364.05	-7	361.6
HSCL	441.25	-7	419.6
ICICIBANK	1261.65	-2	1251.9
INDHOTEL	746.7	-9	724.65

* Trends turned Up after a significant period

Daily Trend turned Up

Scrip Name	LCP	Curr Trnd	Reversal
KOTMAHBNK	1985	-3	1963.15
LARSENTOUBRO	3275.9	-9	3234.3
MANAPPURAM	202.76	-7	192.15
NATIONALUM	187.08	-3	182.4
PFCL	384.45	-7	373.6
POLYCAB	5600.1	-7	5446.45
RAYMOND	1401.2	-7	1371.2
TATAPOWER	347.65	-7	341.55
TORNTPOWER	1258.7	-7	1248.25
UNIONBANK	114.92	-7	111.1
UPL	650.05	-7	633.55
VOLTAS	1284.1	-6	1234.1

* Trends turned Up after a significant period

Gainers - Losers (Nifty 500 Stocks)

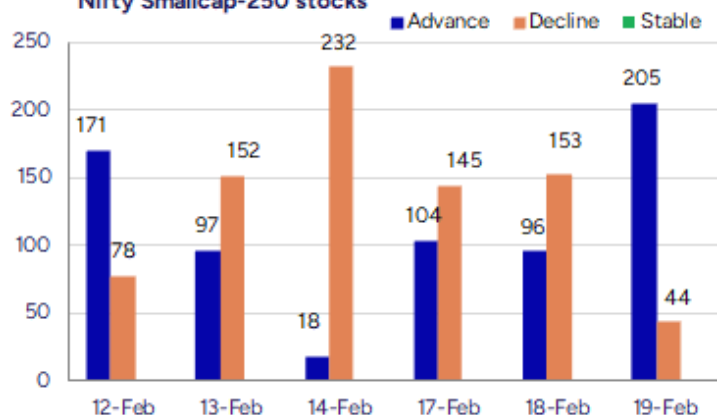
Gainers

Scrip Name	LCP	% Change	Volume
Taj GVK Hotels	466.8	20	1897924
Xtglobal	36.58	19.97	87347
Veranda Learn	244.95	19.55	689581
Hilton Metal	85.71	19.46	407250
Nitiraj Enginee	306.52	19.16	292320
Lancor Holdings	25.46	17.82	488650
DDEVPLASTIK	259.4	17.32	409824

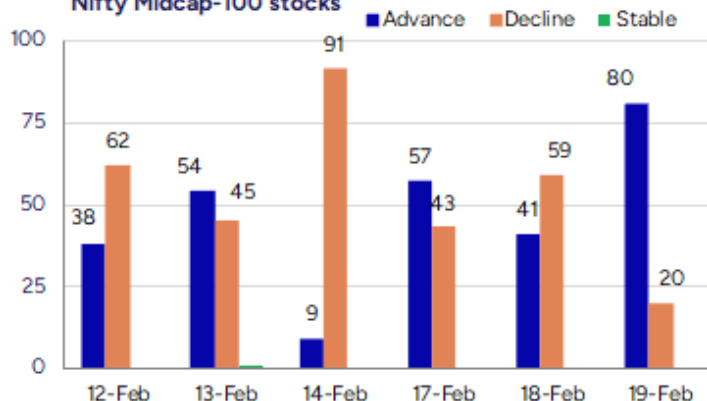
Losers

Scrip Name	LCP	% Change	Volume
Sahasra Electro	326	-17.21	515200
Touchwood Enter	80.02	-15.98	225982
S D Retail	108.65	-14.98	179000
P E Analytics	243.2	-11.56	10800
Sati Poly Plast	138.15	-10.61	28500
Revathi Equipme	1254.75	-10	23012
Maha Rasht Apex	112.17	-9.58	54846

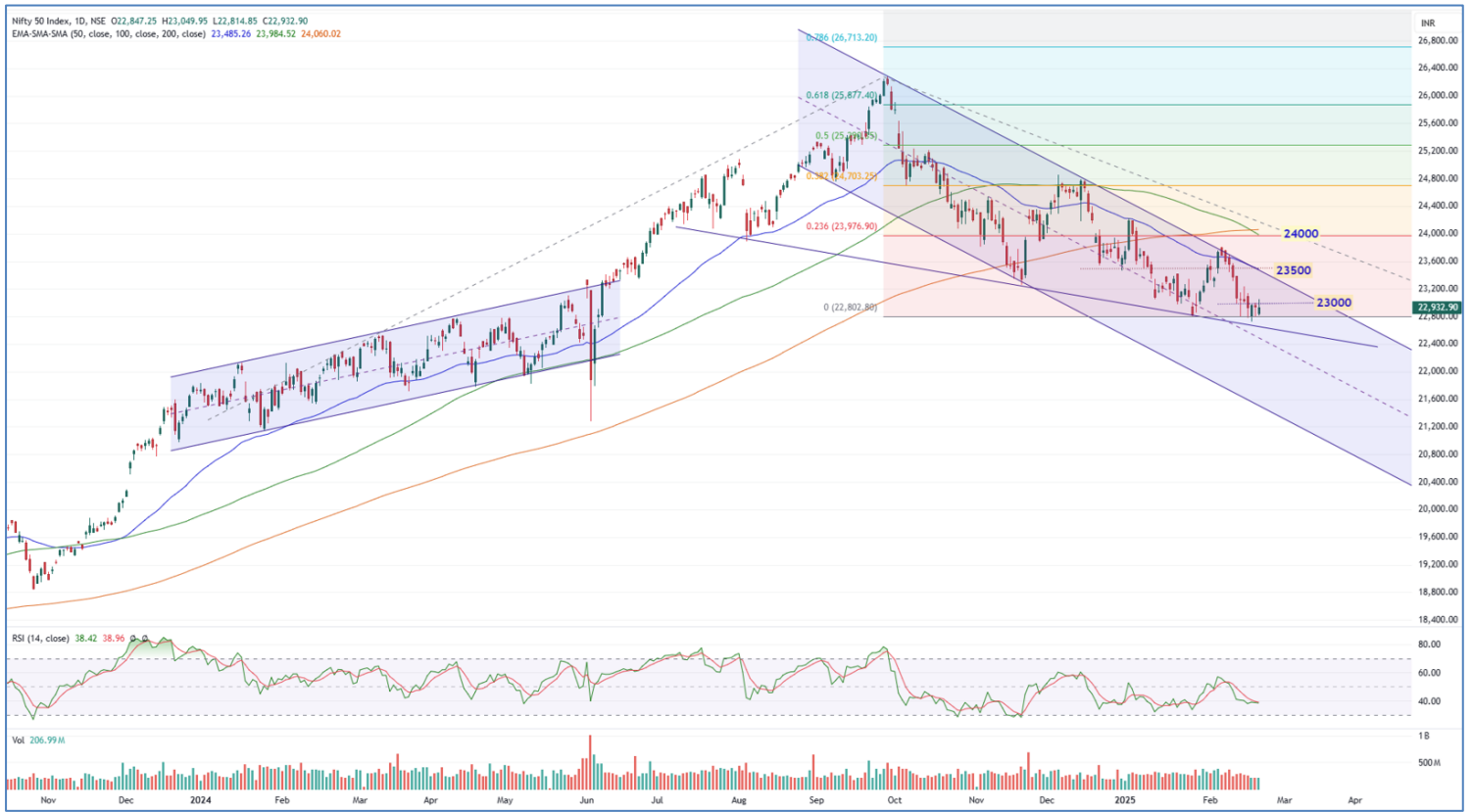
Nifty Smallcap-250 stocks



Nifty Midcap-100 stocks



Nifty Daily chart with RSI indicator



BankNifty Daily chart with RSI indicator

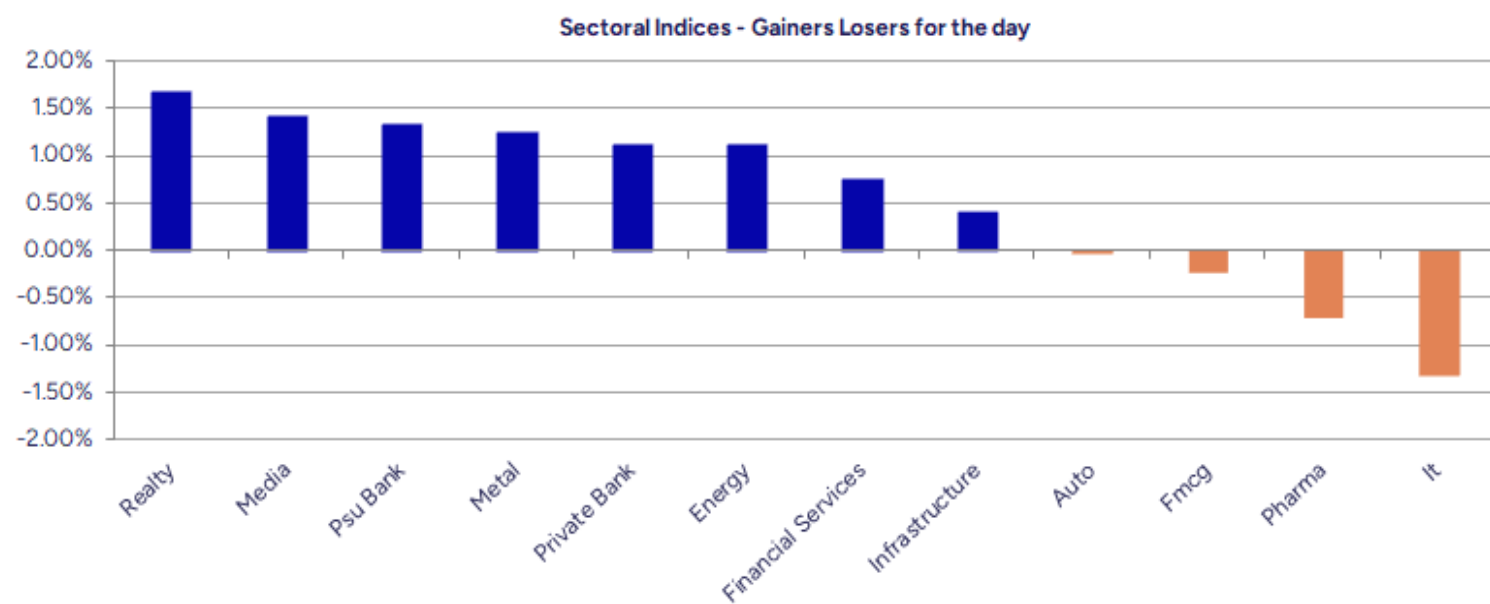


Breakouts - Cross above 200 DMA			
Company Name	LCP	Change %	200 DMA
Apollo Micro Sy	118.46	9.10	108.58
Deccan Cements	683.35	7.15	637.78
Minda Corp	548.05	6.84	512.96
Interiors & Mor	315	6.34	296.22
Royal Orchid	372.3	6.12	350.84
Super Spinning	11.13	5.00	10.6
Polyplex Corp	1190.15	4.74	1136.26
HF	578.85	4.60	553.41
Hi-Green Carbon	241.55	3.99	232.28
Frog Cellsat	340.8	3.97	327.78
Borosil Renew	525.4	3.93	505.55
Vels Film	64.1	3.89	61.7
Deepak Fert	1034.25	3.77	996.71
AMSL	271.35	3.67	261.74
Avalon Technolo	659.2	3.26	638.4
Shiva Texyarn	207.98	3.06	201.8
Ndr Auto Compon	677.1	3.03	657.2
Cantabil Retail	258.85	294.00%	251.46

* Stocks crossing above its Simple Moving Average (200DMA)

Breakdown - Cross below 200 DMA			
Company Name	LCP	Change %	200 DMA
LIC Nifty Mid	51.45	-10.05	57.2
LIC ETF	847.04	-4.59	887.8
Spectrum Talent	134.75	-3.95	140.29
Pattech Fitwell	83.5	-3.24	86.3
CRISIL	4706.7	-2.93	4848.61
Paradeep Phosph	91.09	-2.18	93.12
Lupin	1978.25	-1.35	2005.26
TECHLABS	888.35	-0.54	893.13
Guj Heavy Chem	613.25	-0.37	615.52
Karur Vysya	215.3	-0.31	215.96

* Stocks crossing below its Simple Moving Average (200DMA)



Stocks witnessing a volume surge as compared to their 5 day average volume

Watch out for the stocks that have seen a huge spurt in its share price over the last three days

Volume Shockers - NSE					
Company name	LCP	% Chg	Volume	Avg Vol *	% Chg
Touchwood Enter	76.19	-20	224265	3929	5608
Aegis Logistics	744.65	12.33	13911285	383595	3527
Data Patterns	1550.75	8.92	3147758	106334	2860
Total Transport	75.76	0.32	276506	13024	2023
Dolphin Offshor	233.45	-4.99	38787	2253	1622
Reliable Data S	85	3.51	162387	9729	1569
Redington	247.06	8.45	13174575	939548	1302
Macpower	822.5	10	108162	7721	1301
Diamond Power	91.42	5	90247	6800	1227
Sky Gold	338.55	-3.37	338607	25989	1203
Ingersoll Rand	3335	1.7	120297	9439	1174
Taj GVK Hotels	466.8	20	1887702	149887	1159
Oneclick Logi.	140	-1.27	54000	4320	1150
AYM Syntex	208.98	3.15	292047	23502	1143
Jindal Drilling	893.25	5.52	431694	34855	1139
Gillette India	8361.3	1.6	1124117	96315	1067
Digjam	39.95	2.67	28860	2744	952
India Tourism D	557.3	17.34	425144	40428	952
Remsons Ind	122.5	7.39	218526	21094	936
Archidply Ind	92.03	7.17	212235	20793	921

* the Average Volume of last 5 days

Price Shockers - NSE					
Company name	LCP	3 days *	% Chg	Volume	
Sandur Manganes	434.4	345.5	25.73	546972	
Reliable Data S	84.8	67.69	25.28	170404	
AION-TECH	71.53	57.27	24.9	309446	
GlaxoSmithKline	2507.25	2018	24.24	998279	
Taj GVK Hotels	466.8	383.1	21.85	1898124	
Veranda Learn	244.95	206.73	18.49	689781	
NLC India	229.4	194.28	18.08	7024813	
NAVA	423.25	364.1	16.25	1709270	
Bajaj Health	689.15	595.9	15.65	765070	
Medicamen Bio	496.8	429.95	15.55	43734	
Sikko Industrie	81.17	70.33	15.41	216311	
GreteX Industri	230	199.5	15.29	2250	
TCPL Packaging	4004.4	3484.75	14.91	63495	
Pennar Inds	165.09	144.06	14.6	876291	
Maral Overseas	74.3	65.13	14.08	26129	
Tourism Finance	147.29	129.17	14.03	1905063	
Remsons Ind	123.9	108.74	13.94	222400	
Manappuram Fin	202.76	178.15	13.81	32395998	
Total Transport	75.99	66.86	13.66	279542	
KDDL	2411.2	2129	13.26	31498	

* the % price rise of the last 3 days

Nifty 50 stocks - Summary Details											
Symbol	LTP	Chng	% Chng	Volume (lacs)	Turnover (crs.)	52w High	Diff with 52w H	52w Low	Diff with 52w L	365 days % chng	30 days % chng
NIFTY 50	22932.90	-12.40	-0.05%	2069.92	19817.37	26277.35	12.73%	21281.45	7.76%	-1.11%	3.72%
ADANIANT	2177.00	-43.30	-1.95%	12.03	263.18	3743.90	41.85%	2025.00	7.51%	-7.48%	-31.87%
ADANIPTS	1082.05	-3.10	-0.29%	17.92	193.85	1621.40	33.26%	995.65	8.68%	-6.73%	-16.97%
APOLLOHOSP	6413.00	36.15	0.57%	1.95	124.82	7545.35	15.01%	5693.20	12.64%	-6.61%	-4.21%
ASIANPAINT	2239.70	2.10	0.09%	6.45	144.46	3394.90	34.03%	2185.70	2.47%	-1.03%	-25.37%
AXISBANK	1009.40	15.25	1.53%	64.01	645.67	1339.65	24.65%	933.50	8.13%	0.31%	-6.47%
BAJAJ-AUTO	8473.95	27.35	0.32%	2.01	170.11	12774.00	33.66%	7890.00	7.40%	-1.57%	-0.74%
BAJAJFINSV	1873.40	-20.30	-1.07%	7.69	144.84	2029.90	7.71%	1419.05	32.02%	12.68%	16.88%
BAJFINANCE	8430.00	-35.90	-0.42%	8.96	758.65	8662.80	2.69%	6187.80	36.24%	17.87%	26.12%
BEL	253.25	8.65	3.54%	215.16	539.98	340.50	25.62%	179.10	41.40%	-13.31%	29.59%
BHARTIARTL	1640.00	-28.90	-1.73%	77.77	1282.81	1779.00	7.81%	1097.65	49.41%	2.54%	46.11%
BPCL	255.10	2.35	0.93%	68.87	174.90	376.00	32.15%	242.20	5.33%	-7.62%	-61.27%
BRITANNIA	4838.75	-52.45	-1.07%	2.16	104.55	6469.90	25.21%	4641.00	4.26%	0.76%	-0.69%
CIPLA	1465.95	-16.15	-1.09%	12.10	176.55	1702.05	13.87%	1317.25	11.29%	2.76%	0.80%
COALINDIA	361.85	0.75	0.21%	30.98	112.33	543.55	33.43%	349.25	3.61%	-6.85%	-21.67%
DRREDDY	1167.75	-29.65	-2.48%	30.62	356.40	1421.49	17.85%	1120.00	4.26%	-8.55%	-81.34%
EICHERMOT	4810.00	90.60	1.92%	2.76	131.57	5575.50	13.73%	3672.00	30.99%	-5.84%	20.92%
GRASIM	2460.35	-2.85	-0.12%	2.89	71.23	2877.75	14.50%	2102.20	17.04%	3.68%	13.58%
HCLTECH	1710.00	-15.50	-0.90%	12.94	221.83	2012.20	15.02%	1235.00	38.46%	-3.54%	3.00%
HDFCBANK	1725.05	2.00	0.12%	59.42	1026.44	1880.00	8.24%	1397.30	23.46%	5.27%	21.59%
HDFCLIFE	623.00	4.05	0.65%	20.07	124.41	761.20	18.16%	511.40	21.82%	-3.62%	5.77%
HEROMOTOCO	3885.75	45.25	1.18%	4.54	175.63	6246.25	37.79%	3757.65	3.41%	-6.28%	-20.86%
HINDALCO	627.95	16.50	2.70%	61.02	378.49	772.65	18.73%	499.00	25.84%	-0.90%	19.35%
HINDUNILVR	2250.00	-46.00	-2.00%	15.21	343.69	3035.00	25.86%	2172.05	3.59%	-2.46%	-3.82%
ICICIBANK	1261.50	18.45	1.48%	106.83	1339.60	1362.35	7.40%	1023.35	23.27%	1.44%	19.09%
INDUSINDBK	1034.20	10.10	0.99%	24.65	254.46	1576.35	34.39%	923.70	11.96%	5.47%	-30.97%
INFY	1810.85	-41.10	-2.22%	46.11	839.65	2006.45	9.75%	1358.35	33.31%	2.01%	8.95%
ITC	406.20	0.95	0.23%	70.79	288.03	528.50	23.14%	399.35	1.72%	-7.94%	-0.98%
JSWSTEEL	977.70	-1.10	-0.11%	15.82	154.92	1063.00	8.02%	761.75	28.35%	7.73%	19.34%
KOTAKBANK	1986.90	23.55	1.20%	39.14	775.38	1994.90	0.40%	1543.85	28.70%	11.64%	13.40%
LT	3268.95	48.80	1.52%	16.78	548.63	3963.50	17.52%	3175.05	2.96%	-9.77%	-3.58%
M&M	2758.85	-31.20	-1.12%	26.71	736.15	3270.95	15.66%	1788.80	54.23%	-4.36%	50.93%
MARUTI	12681.20	-105.00	-0.82%	2.89	366.67	13680.00	7.30%	10725.00	18.24%	5.35%	11.35%
NESTLEIND	2202.50	-19.90	-0.90%	4.26	94.21	2778.00	20.72%	2131.25	3.34%	0.23%	-11.57%
NTPC	314.50	3.30	1.06%	130.80	411.26	448.45	29.87%	292.80	7.41%	-4.58%	-8.13%
ONGC	238.10	1.50	0.63%	61.67	146.48	345.00	30.99%	223.00	6.77%	-11.24%	-13.85%
POWERGRID	263.25	-3.70	-1.39%	146.02	386.46	366.25	28.12%	252.20	4.38%	-11.78%	-3.40%
RELIANCE	1226.30	0.90	0.07%	62.17	762.64	1608.80	23.78%	1193.35	2.76%	-5.91%	-58.43%
SBILIFE	1481.00	5.65	0.38%	3.92	57.79	1936.00	23.50%	1307.70	13.25%	-4.23%	-0.91%
SBIN	726.00	0.20	0.03%	67.65	493.05	912.00	20.39%	711.55	2.03%	-5.01%	-4.41%
SHRIRAMFIN	556.50	3.15	0.57%	40.67	226.11	730.45	23.81%	438.60	26.88%	5.10%	-77.32%
SUNPHARMA	1677.65	-23.95	-1.41%	25.76	432.72	1960.35	14.42%	1377.20	21.82%	-4.75%	11.21%
TATACONSUM	1024.45	-2.50	-0.24%	7.82	80.28	1256.44	18.46%	882.90	16.03%	7.60%	-11.09%
TATAMOTORS	681.00	-1.40	-0.21%	99.86	682.75	1179.00	42.24%	667.05	2.09%	-12.48%	-26.83%
TATASTEEL	135.80	1.26	0.94%	184.46	250.61	184.60	26.44%	122.62	10.75%	3.27%	-5.22%
TCS	3785.00	-88.20	-2.28%	43.67	1657.79	4592.25	17.58%	3591.50	5.39%	-6.09%	-5.62%
TECHM	1689.00	-16.00	-0.94%	11.14	188.49	1807.70	6.57%	1162.95	45.23%	2.69%	30.15%
TITAN	3205.80	-16.05	-0.50%	5.22	168.06	3867.00	17.10%	3055.65	4.91%	-4.04%	-12.81%
TRENT	4975.00	-22.75	-0.46%	7.64	384.46	8345.00	40.38%	3750.25	32.66%	-19.61%	23.49%
ULTRACEMCO	11286.15	-22.75	-0.20%	1.58	178.67	12145.35	7.07%	9250.00	22.01%	6.89%	14.21%
WIPRO	313.20	1.00	0.32%	78.36	245.67	324.60	3.51%	208.50	50.22%	10.73%	-41.75%

Disclaimer / Disclosures

ANALYST CERTIFICATION

I, Mrs. Vaishali Parekh B.com, Research Analyst, author and the name subscribed to this report, hereby certify that all of the views expressed in this research report accurately reflect our views about the subject issuer(s) or securities. We also certify that no part of our compensation was, is, or will be directly or indirectly related to the specific recommendation(s) or view(s) in this report.

Terms & conditions and other disclosures:

Prabhudas Lilladher Pvt. Ltd, Mumbai, India (hereinafter referred to as "PL") is engaged in the business of Stock Broking, Portfolio Manager, Depository Participant and distribution for third party financial products. PL is a subsidiary of Prabhudas Lilladher Advisory Services Pvt Ltd. which has its various subsidiaries engaged in business of commodity broking, investment banking, financial services (margin funding) and distribution of third party financial/other products, details in respect of which are available at www.plindia.com

This document has been prepared by the Research Division of PL and is meant for use by the recipient only as information and is not for circulation. This document is not to be reported or copied or made available to others without prior permission of PL. It should not be considered or taken as an offer to sell or a solicitation to buy or sell any security.

The information contained in this report has been obtained from sources that are considered to be reliable. However, PL has not independently verified the accuracy or completeness of the same. Neither PL nor any of its affiliates, its directors or its employees accepts any responsibility of whatsoever nature for the information, statements and opinion given, made available or expressed herein or for any omission therein.

Recipients of this report should be aware that past performance is not necessarily a guide to future performance and value of investments can go down as well. The suitability or otherwise of any investments will depend upon the recipient's particular circumstances and, in case of doubt, advice should be sought from an independent expert/advisor.

Either PL or its affiliates or its directors or its employees or its representatives or its clients or their relatives may have position(s), make market, act as principal or engage in transactions of securities of companies referred to in this report and they may have used the research material prior to publication.

PL may from time to time solicit or perform investment banking or other services for any company mentioned in this document.

PL is registered as Research Analyst under Securities and Exchange Board of India (Research Analysts) Regulations, 2014 PL submits that no material disciplinary action has been taken on us by any Regulatory Authority impacting Equity Research Analysis activities.

PL or its research analysts or its associates or his relatives do not have any financial interest in the subject company.

PL or its research analysts or its associates or his relatives do not have actual/beneficial ownership of one per cent or more securities of the subject company at the end of the month immediately preceding the date of publication of the research report.

PL or its research analysts or its associates or his relatives do not have any material conflict of interest at the time of publication of the research report.

PL or its associates might have received compensation from the subject company in the past twelve months.

PL or its associates might have managed or co-managed public offering of securities for the subject company in the past twelve months or mandated by the subject company for any other assignment in the past twelve months.

PL or its associates might have received any compensation for investment banking or merchant banking or brokerage services from the subject company in the past twelve months.

PL or its associates might have received any compensation for products or services other than investment banking or merchant banking or brokerage services from the subject company in the past twelve months PL or its associates might have received any compensation or other benefits from the subject company or third party in connection with the research report.

PL encourages independence in research report preparation and strives to minimize conflict in preparation of research report. PL or its analysts did not receive any compensation or other benefits from the subject Company or third party in connection with the preparation of the research report. PL or its Research Analysts do not have any material conflict of interest at the time of publication of this report.

It is confirmed that Mrs.Vaishali Parekh B.com, Research Analyst of this report has not received any compensation from the companies mentioned in the report in the preceding twelve months compensation of our Research Analysts is not based on any specific merchant banking, investment banking or brokerage service transactions.

The Research analysts for this report certifies that all of the views expressed in this report accurately reflect his or her personal views about the subject company or companies and its or their securities, and no part of his or her compensation was, is or will be, directly or indirectly related to specific recommendations or views expressed in this report.

The research analysts for this report has not served as an officer, director or employee of the subject company PL or its research analysts have not engaged in market making activity for the subject company

Our sales people, traders, and other professionals or affiliates may provide oral or written market commentary or trading strategies to our clients that reflect opinions that are contrary to the opinions expressed herein, and our proprietary trading and investing businesses may make investment decisions that are inconsistent with the recommendations expressed herein. In reviewing these materials, you should be aware that any or all of the foregoing, among other things, may give rise to real or potential conflicts of interest.

PL and its associates, their directors and employees may (a) from time to time, have a long or short position in, and buy or sell the securities of the subject company or (b) be engaged in any other transaction involving such securities and earn brokerage or other compensation or act as a market maker in the financial instruments of the subject company or act as an advisor or lender/borrower to the subject company or may have any other potential conflict of interests with respect to any recommendation and other related information and opinions.