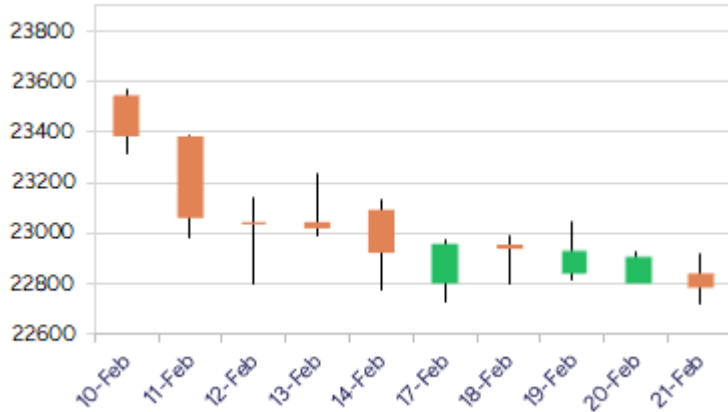


* Sensex 75311.06 - 424.90

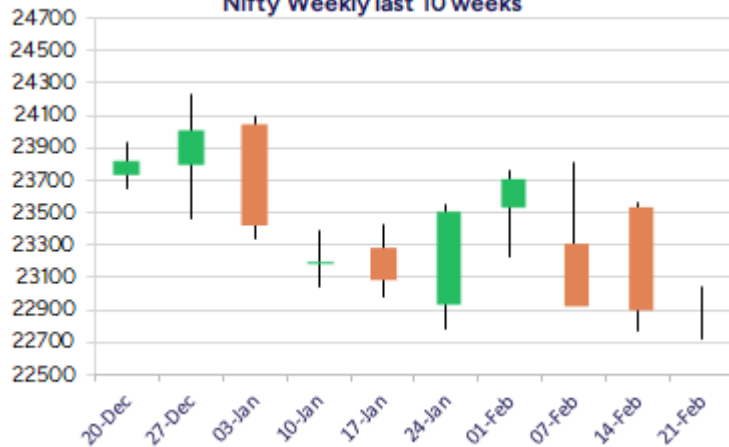
* Nifty 22795.90 - 117.25

* Bank Nifty 48981.20 - 353.35

Nifty daily last 10 days



Nifty Weekly last 10 weeks



*Blue candle → Close rate > Open rate * Red candle → Close rate < Open rate

Market Preview

Nifty breaches below 22800 zone

Nifty after a long wait, has closed just below the crucial 22800 zone with bias weakening and sentiment maintained with a very cautious approach. BankNifty failing to sustain above the 49500 zone, ended the session below the 49000 level with bias precariously placed. The advance decline indicated a weak ratio of 2:3 at close.

Market Forecast

Nifty daily range 22600-23000

Nifty succumbed to selling pressure and closed just below the crucial support zone of 22800 level with bias and sentiment maintained with a very cautious approach. The index is currently precariously placed and if it sustains below the 22800 zone, then there can be further slide expected with 22500 zone as the next important zone to be watched for. On the upside, we continue to maintain our view, only a decisive move past the near-term hurdle of 23000 zone shall confirm an improvement in bias and expect for further rise.

BankNifty, with profit booking witnessed slipped down below the 50000 zone to weaken the bias and further ahead, a decisive breach below the important support of 48500 level shall trigger for fresh selling pressure with next major and crucial support positioned near 47800 zone. For the bias to improve, the index needs to move past the resistance hurdle of 49700 zone to anticipate for further rise in the coming days.

The support for the day is seen at 22600 levels while the resistance is seen at 23000 levels. BankNifty would have the daily range of 48600-49600 levels.

Indices	Period	Closing	% Chng	Trend	Reversal	2 Sup	1 Sup	Pivot	1 Res	2 Res
Nifty	Daily	22795.90	-0.51%	-10	22867.35	22612	22704	22812	22905	23013
	Weekly	22795.90	-0.58%	-2	23039.90	22526	22661	22855	22990	23185
	Monthly	23508.40	-0.58%	-4	26209.65	22068	22788	23507	24228	24947
Bank Nifty	Daily	48981.20	-0.72%	-1	49146.35	48475	48728	49017	49270	49560
	Weekly	48981.20	-0.24%	-2	48868.80	47942	48462	49045	49564	50148
	Monthly	49587.20	-2.50%	-4	53427.15	45873	47730	49701	51559	53530
Sensex	Daily	75311.06	-0.56%	-10	75628.60	74754	75033	75391	75669	76027
	Weekly	75311.06	-0.83%	-2	76152.00	74604	74958	75648	76002	76692
	Monthly	77500.57	-0.82%	-4	85623.60	72808	75154	77614	79960	82419

Daily Trend turned Down

Scrip Name	LCP	Curr Trnd	Reversal
AARTIIND	412.65	1	418.05
AJANTPHARM	2606.5	4	2614.85
ALKEM	4601.25	4	4659
APOLLOTYRE	408.65	2	409.75
ASHOKLEY	222.53	7	223.25
BHARATFORG	1058.95	1	1072.5
COFORGE	7496.2	1	7725.3
DIVISLAB	5757.05	2	5934.5
DIXON	13971.9	1	14125
GRANULES	508.55	2	520.45
GREAVESCOT	263.15	2	271.3
INDUSTOWER	336.4	1	340.1

* Trends turned Down after a significant period

Daily Trend turned Down

Scrip Name	LCP	Curr Trnd	Reversal
IPCALAB	1444.95	6	1465.45
JUBLPHARMA	966.95	1	978.05
KSCL	980.45	4	986
M&MFIN	270.45	1	276.15
MUTHOOTFIN	2212.1	2	2263.95
OIL	392.4	1	399.65
SBIN	722	2	724.1
TATACHEM	846.05	1	850.95
TATAMOTORS	673.2	2	678.8
TVSMOTOR	2324.95	1	2400
VRLOG	471.1	1	476.25
WIPRO	306.35	3	309.9

* Trends turned Down after a significant period

Gainers - Losers (Nifty 500 Stocks)

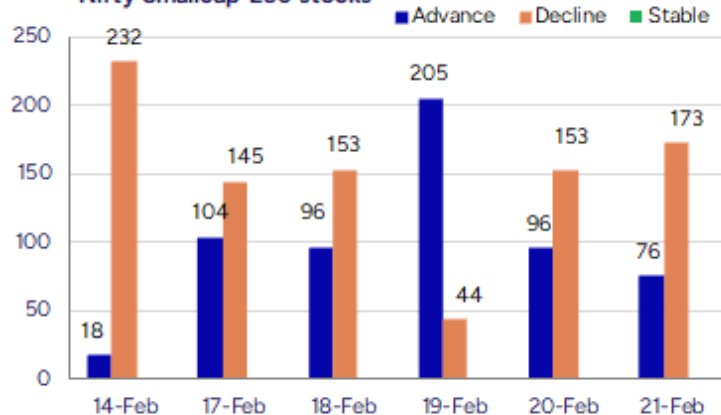
Gainers

Scrip Name	LCP	% Change	Volume
IKIO Lighting	213.76	18.7	1720648
Religare Enterp	263.89	18.33	23061145
Thaai Casting	117.65	14.84	80800
Deccan Cements	862.7	12.18	553014
Godrej Ind	1131.5	11.84	23358633
Shree Rama News	30.22	11.39	1147125
Subros	634.15	10.94	333754

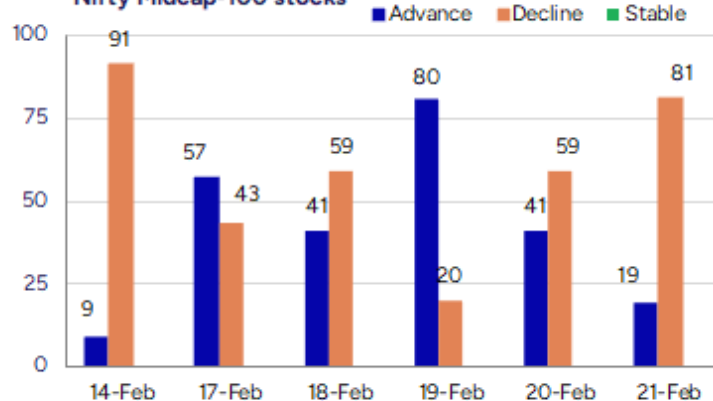
Losers

Scrip Name	LCP	% Change	Volume
Jindal Drilling	821.2	-12.16	1196322
FCS Software	2.9	-11.59	15744607
Mitcon Cons	82.28	-9.97	30085
D.K. Enterprise	66.55	-9.33	1500
Transworld Ship	257.25	-7.71	86066
IVP	146.2	-6.96	31236
Shivalik Bimeta	450.4	-6.49	203808

Nifty Smallcap-250 stocks



Nifty Midcap-100 stocks



Nifty Daily chart with RSI indicator



BankNifty Daily chart with RSI indicator



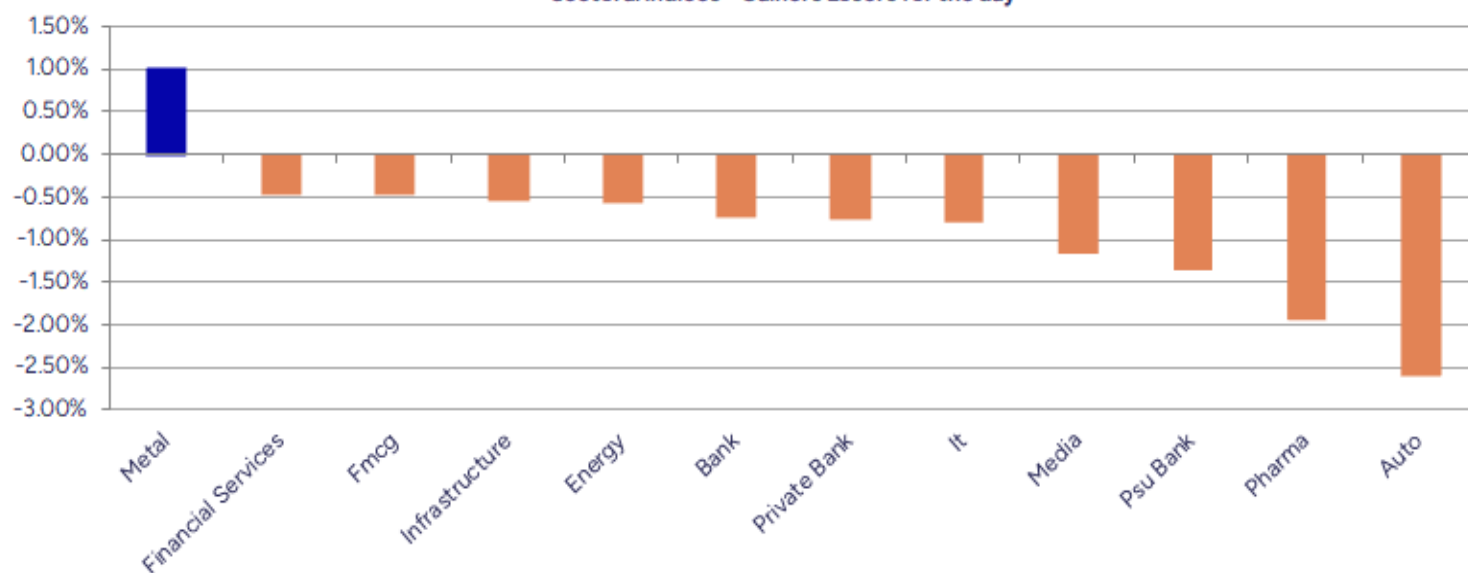
Breakouts - Cross above 200 DMA			
Company Name	LCP	Change %	200 DMA
Vijaya Diagnost	994.1	5.75	940.02
Mangalam Organ	477.3	5.42	452.75
Tirupati Forge	39.25	4.72	37.48
KDDL	2976.55	3.85	2866.33
Religare Enterp	263.89	3.71	254.45
TCI Finance	13.7	3.63	13.22
Madhav Copper	44.13	3.11	42.8
Transformers	425.3	2.87	413.44
Affle India	1546	2.45	1509.05
Anand Rathi	4006.35	2.21	3919.78
Sapphire Foods	326.35	2.18	319.38
Sunflag Iron	234.05	1.51	230.56
Va Tech Wabag	1434.1	1.23	1416.68
Spectrum Electr	1925.1	1.20	1902.28
Mah Scooters	9589.8	0.62	9530.45
Mah Seamless	664	0.40	661.33
DIC India	642.7	0.29	640.81
L&T Technology	5123.1	17.00%	5114.62

* Stocks crossing above its Simple Moving Average (200DMA)

Breakdown - Cross below 200 DMA			
Company Name	LCP	Change %	200 DMA
IFB Agro	515.6	-5.04	542.95
Saroja Pharma	47.35	-4.63	49.65
Ajmera Realty	802.6	-3.27	829.76
S J Logistics	545.4	-2.88	561.55
Hubtown	235.9	-2.18	241.16
Kilitch Drugs	326.85	-2.17	334.09
Karur Vysya	213.35	-1.35	216.26
Global Pet	106.2	-1.33	107.63
Datamatics Glob	601.45	-1.29	609.28
Fidel Softech	135	-1.25	136.71
Beta Drugs	1649.3	-0.85	1663.39
Ipru Nifty PSU	60.07	-0.78	60.54
Mirae NiftyFin	23.75	-0.63	23.9
Asahi India	673.3	-0.61	677.42
UltraTechCement	11157.25	-0.53	11216.29
PC Jeweller	11.85	-0.50	11.91
Twamev Construc	43.84	-0.23	43.94
Vasa Denticity	623.7	-0.21	625.04

* Stocks crossing below its Simple Moving Average (200DMA)

Sectoral Indices - Gainers Losers for the day



Stocks witnessing a volume surge as compared to their 5 day average volur

Watch out for the stocks that have seen a huge spurt in its share price over the last three days

Volume Shockers - NSE					
Company name	LCP	% Chg	Volume	Avg Vol *	% Chg
Godrej Ind	1131.5	11.84	23358633	443865	5163
Touchwood Enter	96.21	0.21	169334	3929	4210
Praxis Home Ret	13.09	4.89	2272983	62438	3540
Deccan Cements	862.7	12.18	553014	15432	3484
Jindal Drilling	821.2	-12.16	1196322	34855	3332
Dr Reddys Labs	1151.8	-1.64	6828590	296967	2199
CreditAccess Gr	866.35	-1	4015927	198052	1928
HINDWAREAP	210.75	8.29	2099807	112702	1763
Vijaya Diagnost	994.1	7.48	3781114	222272	1601
Diamond Power	100.78	4.99	107755	6800	1485
Transformers	425.3	5	2001263	131705	1420
Mahickra Chemic	108	-1.37	29250	1950	1400
Jash Engineerin	527.85	-3.76	399238	26774	1391
Shakti Pumps	913.7	2.13	565838	38631	1365
La Opala RG	217.15	4.32	1930293	135759	1322
Fonebox Retail	109.95	4.71	68000	5200	1208
Kamat Hotels	288.48	1.37	632215	48751	1197
Redington	251.51	0.82	11923159	939548	1169
NR Agarwal	302.5	7.65	98258	7777	1163
Juniper Hotels	255.85	6.6	1904344	153335	1142

* the Average Volume of last 5 days

Price Shockers - NSE				
Company name	LCP	3 days *	% Chg	Volume
Deccan Cements	862.7	596.5	44.63	553014
KDDL	2976.55	2155.95	38.06	95252
Godrej Ind	1131.5	841.5	34.46	23358633
Shree Rama News	30.22	22.95	31.68	1147125
Xtglobal	39.26	30.49	28.76	25858
Hilton Metal	91.91	71.75	28.1	129030
Nitiraj Enginee	323.84	257.23	25.9	89663
Prajay Engineer	22.84	18.24	25.22	245697
Mangalam Organ	477.3	383.85	24.35	33990
Lancor Holdings	26.46	21.61	22.44	169030
Master Trust	134.02	109.78	22.08	33611
ACE Integrated	25.1	20.57	22.02	19776
Shah Alloys	55.09	45.82	20.23	65555
Thaai Casting	117.65	98	20.05	80800
Super Spinning	12.34	10.28	20.04	18150
Avantel	121.36	101.44	19.64	2055663
Geekay Wires	81.15	68.31	18.8	97830
Century Enka	539.05	454.05	18.72	93549
Pritika Auto	21.31	17.95	18.72	812019
Tourism Finance	153.35	129.24	18.66	875956

* the % price rise of the last 3 days

Nifty 50 stocks - Summary Details											
Symbol	LTP	Chng	% Chng	Volume (lacs)	Turnover (crs.)	52w High	Diff with 52w H	52w Low	Diff with 52w L	365 days % chng	30 days % chng
NIFTY 50	22795.90	-117.25	-0.51%	2427.42	21993.22	26277.35	13.25%	21281.45	7.12%	-0.48%	3.89%
ADANIEN	2125.00	-54.00	-2.48%	15.40	331.51	3743.90	43.24%	2025.00	4.94%	-8.61%	-32.40%
ADANIPTS	1082.00	-29.70	-2.67%	23.60	257.69	1621.40	33.27%	995.65	8.67%	0.50%	-13.89%
APOLLOHOSP	6303.10	-87.85	-1.37%	2.20	139.44	7545.35	16.46%	5693.20	10.71%	-7.63%	-5.46%
ASIANPAINT	2254.00	4.95	0.22%	7.56	170.07	3394.90	33.61%	2185.70	3.12%	-0.50%	-25.08%
AXISBANK	1005.50	-11.70	-1.15%	50.20	507.59	1339.65	24.94%	933.50	7.71%	4.84%	-6.18%
BAJAJ-AUTO	8504.90	-125.30	-1.45%	2.22	189.21	12774.00	33.42%	7890.00	7.79%	1.91%	4.83%
BAJAJFINSV	1872.50	-8.75	-0.47%	8.52	160.17	2029.90	7.75%	1419.05	31.95%	9.57%	18.55%
BAJFINANCE	8387.00	-12.45	-0.15%	6.09	509.31	8662.80	3.18%	6187.80	35.54%	15.19%	25.57%
BEL	255.00	-5.25	-2.02%	165.94	427.32	340.50	25.11%	179.10	42.38%	-6.72%	37.92%
BHARTIARTL	1636.75	-6.75	-0.41%	54.47	894.76	1779.00	8.00%	1097.65	49.11%	1.07%	44.18%
BPCL	251.70	-6.90	-2.67%	98.45	248.71	376.00	33.06%	242.20	3.92%	-7.71%	-59.16%
BRITANNIA	4818.55	-13.85	-0.29%	3.34	160.52	6469.90	25.52%	4641.00	3.83%	-1.46%	-1.84%
CIPLA	1472.00	-7.70	-0.52%	14.13	209.35	1702.05	13.52%	1317.25	11.75%	3.62%	2.24%
COALINDIA	369.00	1.05	0.29%	52.34	193.29	543.55	32.11%	349.25	5.65%	-3.56%	-15.01%
DRREDDY	1150.80	-20.15	-1.72%	68.29	787.14	1421.49	19.04%	1120.00	2.75%	-9.10%	-81.56%
EICHERMOT	4968.00	79.60	1.63%	3.24	160.26	5575.50	10.90%	3672.00	35.29%	-1.64%	27.42%
GRASIM	2417.15	-36.55	-1.49%	5.04	122.68	2877.75	16.01%	2113.20	14.38%	3.64%	11.84%
HCLTECH	1695.65	8.10	0.48%	12.23	207.42	2012.20	15.73%	1235.00	37.30%	-6.37%	3.13%
HDFCBANK	1690.00	2.90	0.17%	78.40	1322.00	1880.00	10.11%	1397.30	20.95%	2.72%	17.23%
HDFCLIFE	622.50	2.50	0.40%	16.28	100.96	761.20	18.22%	511.40	21.72%	-0.64%	7.37%
HEROMOTOCO	3851.00	-58.10	-1.49%	4.26	164.50	6246.25	38.35%	3757.65	2.48%	-2.87%	-13.80%
HINDALCO	652.15	13.35	2.09%	74.91	487.48	772.65	15.60%	499.00	30.69%	3.88%	24.81%
HINDUNILVR	2238.50	-9.55	-0.42%	17.81	398.83	3035.00	26.24%	2172.05	3.06%	-3.95%	-6.61%
ICICIBANK	1232.00	-17.95	-1.44%	77.86	960.19	1362.35	9.57%	1038.50	18.63%	4.50%	18.82%
INDUSINDBK	1043.00	-4.65	-0.44%	25.90	270.84	1576.35	33.83%	923.70	12.92%	9.08%	-30.95%
INFY	1815.00	-10.15	-0.56%	33.80	614.27	2006.45	9.54%	1358.35	33.62%	1.36%	10.24%
ITC	400.70	-1.35	-0.34%	82.41	330.24	528.50	24.18%	396.20	1.14%	-8.11%	-0.32%
JSWSTEEL	979.75	-1.40	-0.14%	15.99	157.29	1063.00	7.83%	761.75	28.62%	5.86%	18.46%
KOTAKBANK	1950.15	-20.40	-1.04%	40.09	780.18	1994.90	2.24%	1543.85	26.32%	4.08%	12.85%
LT	3315.50	39.70	1.21%	17.07	564.28	3963.50	16.35%	3175.05	4.42%	-7.49%	-0.62%
M&M	2663.50	-175.95	-6.20%	89.40	2408.51	3270.95	18.57%	1788.80	48.90%	0.64%	52.69%
MARUTI	12320.00	-120.65	-0.97%	4.77	588.64	13680.00	9.94%	10725.00	14.87%	4.69%	8.50%
NESTLEIND	2211.00	4.25	0.19%	5.94	131.03	2778.00	20.41%	2131.25	3.74%	0.47%	-13.24%
NTPC	325.00	-0.15	-0.05%	108.09	354.14	448.45	27.53%	292.80	11.00%	0.26%	-3.26%
ONGC	239.10	-2.80	-1.16%	56.97	136.81	345.00	30.70%	223.00	7.22%	-8.99%	-11.38%
POWERGRID	261.60	-4.15	-1.56%	107.57	281.47	366.25	28.57%	252.20	3.73%	-12.11%	-5.12%
RELIANCE	1226.90	-6.10	-0.49%	69.04	850.09	1608.80	23.74%	1193.35	2.81%	-3.20%	-58.00%
SBILIFE	1480.55	10.75	0.73%	10.51	156.13	1936.00	23.53%	1307.70	13.22%	0.22%	-2.12%
SBIN	720.35	-9.35	-1.28%	65.71	476.19	912.00	21.01%	711.55	1.24%	-3.87%	-5.42%
SHRIRAMFIN	581.50	0.65	0.11%	93.28	546.60	730.45	20.39%	438.60	32.58%	11.64%	-75.35%
SUNPHARMA	1638.00	-31.30	-1.88%	22.44	369.84	1960.35	16.44%	1377.20	18.94%	-5.30%	8.16%
TATACONSUM	1002.50	-6.40	-0.63%	13.30	133.46	1256.44	20.21%	882.90	13.55%	3.79%	-13.08%
TATAMOTORS	672.40	-17.40	-2.52%	145.76	987.67	1179.00	42.97%	667.05	0.80%	-9.33%	-25.11%
TATASTEEL	140.60	2.56	1.85%	419.85	588.54	184.60	23.84%	122.62	14.66%	6.43%	-4.07%
TCS	3789.90	10.50	0.28%	18.34	695.31	4592.25	17.47%	3591.50	5.52%	-6.35%	-5.31%
TECHM	1646.10	-11.75	-0.71%	14.79	244.21	1807.70	8.94%	1162.95	41.55%	1.06%	27.86%
TITAN	3176.00	-15.45	-0.48%	4.08	129.74	3867.00	17.87%	3055.65	3.94%	-4.83%	-12.71%
TRENT	5032.00	-67.50	-1.32%	9.12	462.83	8345.00	39.70%	3750.25	34.18%	-11.11%	30.93%
ULTRACEMCO	11160.25	-127.35	-1.13%	3.20	355.69	12145.35	8.11%	9250.00	20.65%	5.81%	13.23%
WIPRO	305.80	-7.50	-2.39%	87.23	268.82	324.60	5.79%	208.50	46.67%	5.01%	-39.91%

Disclaimer / Disclosures

ANALYST CERTIFICATION

I, Mrs. Vaishali Parekh B.com, Research Analyst, author and the name subscribed to this report, hereby certify that all of the views expressed in this research report accurately reflect our views about the subject issuer(s) or securities. We also certify that no part of our compensation was, is, or will be directly or indirectly related to the specific recommendation(s) or view(s) in this report.

Terms & conditions and other disclosures:

Prabhudas Lilladher Pvt. Ltd, Mumbai, India (hereinafter referred to as "PL") is engaged in the business of Stock Broking, Portfolio Manager, Depository Participant and distribution for third party financial products. PL is a subsidiary of Prabhudas Lilladher Advisory Services Pvt Ltd. which has its various subsidiaries engaged in business of commodity broking, investment banking, financial services (margin funding) and distribution of third party financial/other products, details in respect of which are available at www.plindia.com

This document has been prepared by the Research Division of PL and is meant for use by the recipient only as information and is not for circulation. This document is not to be reported or copied or made available to others without prior permission of PL. It should not be considered or taken as an offer to sell or a solicitation to buy or sell any security.

The information contained in this report has been obtained from sources that are considered to be reliable. However, PL has not independently verified the accuracy or completeness of the same. Neither PL nor any of its affiliates, its directors or its employees accepts any responsibility of whatsoever nature for the information, statements and opinion given, made available or expressed herein or for any omission therein.

Recipients of this report should be aware that past performance is not necessarily a guide to future performance and value of investments can go down as well. The suitability or otherwise of any investments will depend upon the recipient's particular circumstances and, in case of doubt, advice should be sought from an independent expert/advisor.

Either PL or its affiliates or its directors or its employees or its representatives or its clients or their relatives may have position(s), make market, act as principal or engage in transactions of securities of companies referred to in this report and they may have used the research material prior to publication.

PL may from time to time solicit or perform investment banking or other services for any company mentioned in this document.

PL is registered as Research Analyst under Securities and Exchange Board of India (Research Analysts) Regulations, 2014 PL submits that no material disciplinary action has been taken on us by any Regulatory Authority impacting Equity Research Analysis activities.

PL or its research analysts or its associates or his relatives do not have any financial interest in the subject company.

PL or its research analysts or its associates or his relatives do not have actual/beneficial ownership of one per cent or more securities of the subject company at the end of the month immediately preceding the date of publication of the research report.

PL or its research analysts or its associates or his relatives do not have any material conflict of interest at the time of publication of the research report.

PL or its associates might have received compensation from the subject company in the past twelve months.

PL or its associates might have managed or co-managed public offering of securities for the subject company in the past twelve months or mandated by the subject company for any other assignment in the past twelve months.

PL or its associates might have received any compensation for investment banking or merchant banking or brokerage services from the subject company in the past twelve months.

PL or its associates might have received any compensation for products or services other than investment banking or merchant banking or brokerage services from the subject company in the past twelve months PL or its associates might have received any compensation or other benefits from the subject company or third party in connection with the research report.

PL encourages independence in research report preparation and strives to minimize conflict in preparation of research report. PL or its analysts did not receive any compensation or other benefits from the subject Company or third party in connection with the preparation of the research report. PL or its Research Analysts do not have any material conflict of interest at the time of publication of this report.

It is confirmed that Mrs.Vaishali Parekh B.com, Research Analyst of this report has not received any compensation from the companies mentioned in the report in the preceding twelve months compensation of our Research Analysts is not based on any specific merchant banking, investment banking or brokerage service transactions.

The Research analysts for this report certifies that all of the views expressed in this report accurately reflect his or her personal views about the subject company or companies and its or their securities, and no part of his or her compensation was, is or will be, directly or indirectly related to specific recommendations or views expressed in this report.

The research analysts for this report has not served as an officer, director or employee of the subject company PL or its research analysts have not engaged in market making activity for the subject company

Our sales people, traders, and other professionals or affiliates may provide oral or written market commentary or trading strategies to our clients that reflect opinions that are contrary to the opinions expressed herein, and our proprietary trading and investing businesses may make investment decisions that are inconsistent with the recommendations expressed herein. In reviewing these materials, you should be aware that any or all of the foregoing, among other things, may give rise to real or potential conflicts of interest.

PL and its associates, their directors and employees may (a) from time to time, have a long or short position in, and buy or sell the securities of the subject company or (b) be engaged in any other transaction involving such securities and earn brokerage or other compensation or act as a market maker in the financial instruments of the subject company or act as an advisor or lender/borrower to the subject company or may have any other potential conflict of interests with respect to any recommendation and other related information and opinions.