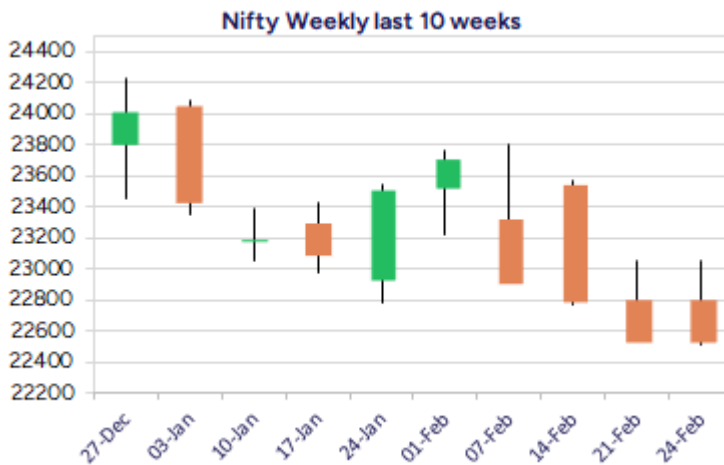
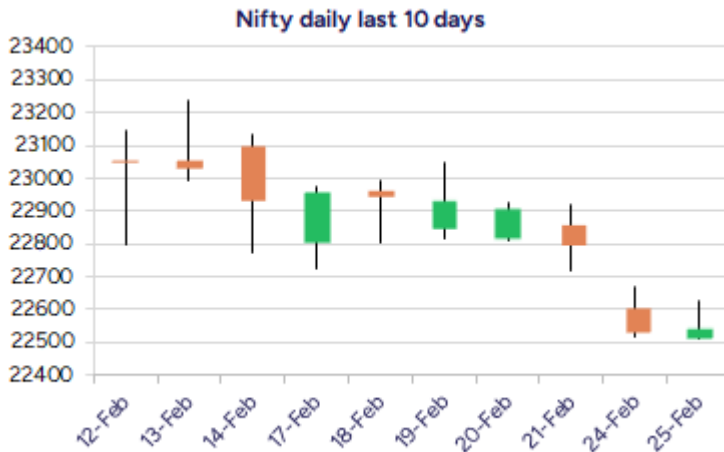


\* Sensex 74602.12 + 147.71

\* Nifty 22547.55 - 05.80

\* Bank Nifty 48608.35 - 43.60



\*Blue candle → Close rate > Open rate \* Red candle → Close rate < Open rate

## Market Preview

### Nifty remains sluggish; ends on flat note

Nifty witnessed a rangebound session with low volume participation from the market players and ended on a flat note near 22550 zone. BankNifty remained sluggish with no major movement witnessed and closed near the 48600 level with bias maintained cautious. The advance decline was on the negative with the ratio indicating 2:3 at close.

## Market Forecast

### Nifty daily range 22400-22800

Nifty witnessed a dull sluggish session and remained hanging near the 22550 zone for most part of the session with bias and sentiment maintained with a cautious approach and further ahead, a decisive move below 22500 level shall trigger for fresh selling pressure. On the upside, as mentioned earlier, the index would need to move past the near-term hurdle of 22800 level to regain some strength and only a close above 23000 zone shall bring conviction for further upward move.

BankNifty witnessed a very narrow range bound session hovering near the 48650 zone with no clear direction and was able to sustain the near-term support area of 48400 zone with bias maintained with a cautious approach. The index needs to move past the resistance hurdle of 49700 zone which is necessary to anticipate for further rise thereafter in the coming days.

The support for the day is seen at 22400 levels while the resistance is seen at 22800 levels. BankNifty would have the daily range of 48200-49000 levels.

Indices	Period	Closing	% Chng	Trend	Reversal	2 Sup	1 Sup	Pivot	1 Res	2 Res
Nifty	Daily	22547.55	0.06%	-12	22667.20	22451	22499	22562	22611	22674
	Weekly	22795.90	-0.58%	-2	23039.90	22526	22661	22855	22990	23185
	Monthly	23508.40	-0.58%	-4	26209.65	22068	22788	23507	24228	24947
Bank Nifty	Daily	48608.35	-0.09%	-3	48915.85	48340	48474	48668	48802	48996
	Weekly	48981.20	-0.24%	-2	48868.80	47942	48462	49045	49564	50148
	Monthly	49587.20	-2.50%	-4	53427.15	45873	47730	49701	51559	53530
Sensex	Daily	74602.12	0.20%	-12	74968.50	74211	74407	74596	74791	74981
	Weekly	75311.06	-0.83%	-2	76152.00	74604	74958	75648	76002	76692
	Monthly	77500.57	-0.82%	-4	85623.60	72808	75154	77614	79960	82419

## Daily Trend turned Up

Scrip Name	LCP	Curr Trnd	Reversal
ADANIPOWER	497.8	-7	477.25
ASHOKLEY	227.23	-2	223.8
BAJFINANCE	8488.8	-3	8476.55
BHEL	194.61	-1	191.65
DABUR	510.95	-14	509.2
FORTIS	608.35	-1	602.1
HDFCLIFE	622.15	-10	620.4
HINDUNILVR	2259.3	-15	2256.55
ITC	404.85	-13	402.15
KSCL	1024.1	-2	989.1
M&M	2777.85	-11	2720.6
TVSMOTOR	2360.65	-2	2352.3

\* Trends turned Up after a significant period

## Daily Trend turned Down

Scrip Name	LCP	Curr Trnd	Reversal
CANFINHOME	577.85	3	591.65
DLF	656.8	4	673.1
HINDALCO	619.45	15	636.8
HINDPETRO	309.85	5	316.9
HINDZINC	407.25	4	413.8
JINDALSTEL	856.8	16	859.7
LICHSGFIN	521.45	4	535.95
MCX	5497.55	4	5532.35
NATIONALUM	180.79	4	185.2
NCC	181.05	4	184.85
TRENT	4959.9	3	4992.95
VEDL	409.25	4	421.8

\* Trends turned Down after a significant period

## Gainers - Losers ( Nifty 500 Stocks )

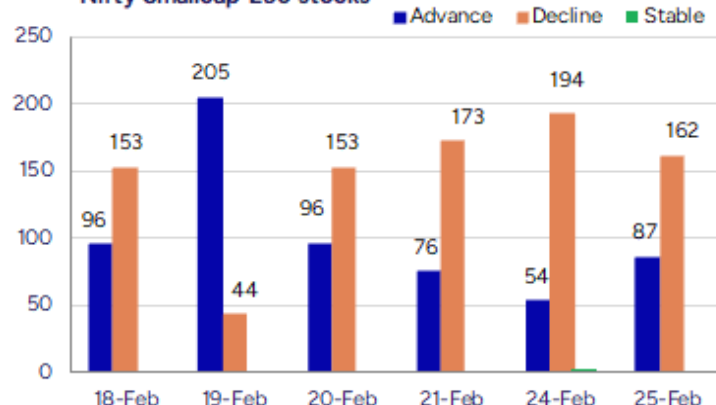
## Gainers

Scrip Name	LCP	% Change	Volume
Guj Themis	243.46	3	33559
Heads UP Vent	13.26	20	339544
Thangamayil	1863.05	20	268795
Karnika Ind	590.3	17.43	128000
DUGLOBAL	60	15.5	110000
Vijaya Diagnost	1061.95	15.02	6471119
Swastik Pipe	50.45	14.92	42000

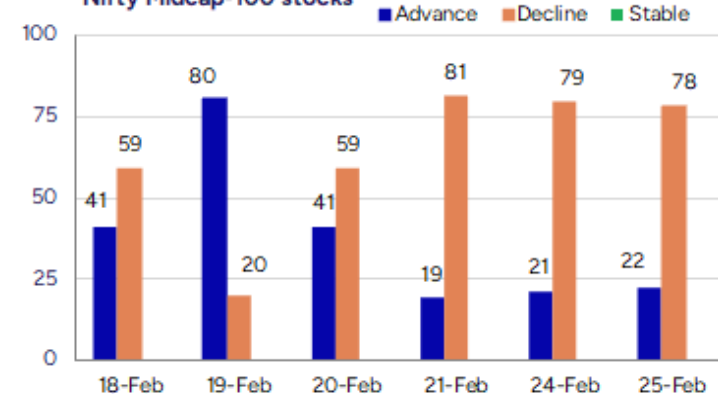
## Losers

Scrip Name	LCP	% Change	Volume
Aditya Ultra	32.45	-16.47	140000
Polysil Irrigat	17.1	-12.76	872000
Anlon Tech	272.15	-9.88	15200
Denta Water	311.7	-9.28	1039014
Paramount Dye	59.5	-7.89	4800
Archidply Decor	72.17	-7.34	1653
Mangalam Alloys	27.4	-7.28	83200

## Nifty Smallcap-250 stocks



## Nifty Midcap-100 stocks



### Nifty Daily chart with RSI indicator



### BankNifty Daily chart with RSI indicator



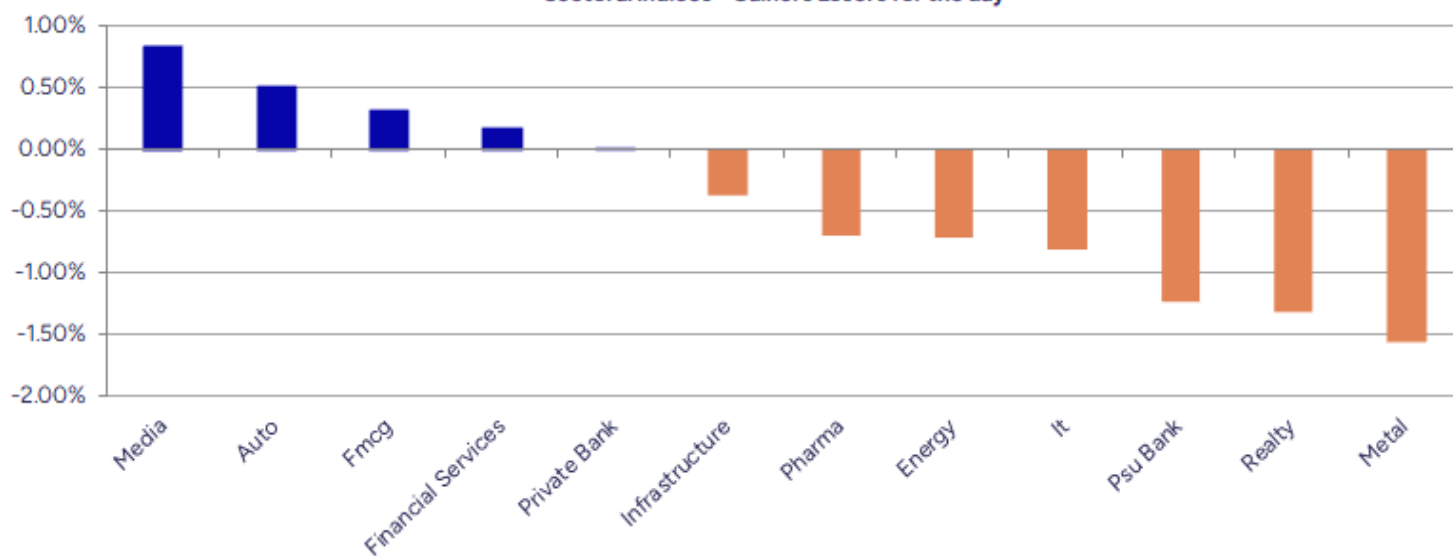
Breakouts - Cross above 200 DMA			
Company Name	LCP	Change %	200 DMA
Vijaya Diagnost	1061.95	12.74	941.94
Heads UP Vent	13.26	7.98	12.28
Paradeep Phosph	96.18	2.78	93.58
Procter&Gamble	5356.45	2.76	5212.62
Devyani	178.46	2.55	174.02
Hi-Green Carbon	238.8	2.41	233.18
Genesys Int	773.1	2.39	755.09
Jubilant Ing.	684.8	1.81	672.65
Vardhman Poly	11.35	1.70	11.16
Aluwind Archite	63.5	1.62	62.49
Chola Fin Hold	1568.4	1.35	1547.46
Steel City Secu	101.11	1.35	99.76
TCI Finance	13.46	1.13	13.31
Ameya Precision	104.7	0.89	103.78
360 ONE WAM	1038.5	0.86	1029.67
Piramal Pharma	210.72	0.80	209.04
Nazara	924.15	0.55	919.06
HDFC Bank	1682.35	30.00%	1677.4

\* Stocks crossing above its Simple Moving Average (200DMA)

Breakdown - Cross below 200 DMA			
Company Name	LCP	Change %	200 DMA
Indiabulls Real	127.53	-3.17	131.7
Amiable Logisti	80.15	-2.78	82.44
Soma Textile	39.23	-2.34	40.17
Mangalam Organ	445.35	-1.88	453.9
Guj Heavy Chem	606.45	-1.87	618.03
Shiva Texyarn	199.18	-1.66	202.54
Styrenix	2440.8	-1.44	2476.46
Minda Corp	508.25	-1.40	515.47
All E Technolog	410.9	-1.30	416.3
CARE Ratings	1165.65	-1.22	1180.06
Ramdevbaba Solv	110.15	-1.19	111.48
Gujarat Fluoro	3696.15	-1.17	3739.79
Kalyani Forge	550.45	-1.09	556.5
Tainwala Chem	232.3	-0.90	234.41
Ipca Labs	1417.4	-0.77	1428.37
Nagreeka Cap	29	-0.68	29.2
Kesoram	209.29	-0.65	210.65
Kanpur Plast	118.15	-0.37	118.59

\* Stocks crossing below its Simple Moving Average (200DMA)

Sectoral Indices - Gainers Losers for the day



Stocks witnessing a volume surge as compared to their 5 day average volume

Watch out for the stocks that have seen a huge spurt in its share price over the last three days

Volume Shockers - NSE					
Company name	LCP	% Chg	Volume	Avg Vol *	% Chg
Jindal Drilling	873.6	<b>14.26</b>	2461847	34855	6963
CreditAccess Gr	866.45	<b>1.52</b>	8407990	198052	4145
Atal	12.36	<b>-1.75</b>	4107894	100889	3972
Polysil Irrigat	17.1	<b>-12.76</b>	872000	22800	3725
Dolphin Offshor	207.25	<b>0.9</b>	74661	2253	3214
Vijaya Diagnost	1061.95	<b>15.02</b>	6471119	222272	2811
Dr Reddys Labs	1128.15	<b>-3.13</b>	6462941	296967	2076
Kamat Hotels	292.77	<b>0.4</b>	984411	48751	1919
Digjam	36.69	<b>-4.45</b>	54034	2744	1869
Narayana Hruda	1465.55	<b>5.19</b>	5068134	272555	1759
Jindal Worldwid	374.1	<b>1.93</b>	2292445	138074	1560
Krishna Institu	515.6	<b>-1.62</b>	897642	59456	1410
Karnika Industr	590.3	<b>17.43</b>	128000	9360	1268
BEW Engineering	162.35	<b>-1.61</b>	15000	1125	1233
Oneclick Logi.	140.8	<b>14.01</b>	54000	4320	1150
DIC India	709.15	<b>0.46</b>	15814	1351	1071
Shyam Telecom	13.41	<b>-2.33</b>	16045	1416	1033
Adani Green Ene	840.65	<b>0.55</b>	5298621	480592	1003
Reliable Data S	82.5	<b>5.47</b>	105758	9729	987
Mahickra Chemic	107.4	<b>2.14</b>	21000	1950	977

\* the Average Volume of last 5 days

Price Shockers - NSE				
Company name	LCP	3 days *	% Chg	Volume
Heads UP Vent	13.26	9.21	<b>43.97</b>	339544
Phantom Digital	225.05	186	<b>20.99</b>	113700
Texmaco Infra	112.59	95.02	<b>18.49</b>	3380729
Asian Energy	271.35	229.8	<b>18.08</b>	316384
Premier Polyfil	70.44	59.68	<b>18.03</b>	257178
Premier Polyfil	70.44	59.68	<b>18.03</b>	257178
DEE Development	210.05	182.95	<b>14.81</b>	232429
Shree Rama News	34.44	30.22	<b>13.96</b>	219078
Apollo Pipes	369.4	326.6	<b>13.1</b>	369705
Brand Concepts	409.8	366	<b>11.97</b>	10628
Century Enka	597.1	539.05	<b>10.77</b>	284816
Aaron Industrie	360.5	325.65	<b>10.7</b>	89187
Silgo Retail	41.94	38	<b>10.37</b>	246265
DIC India	709.15	642.7	<b>10.34</b>	15903
Emami Realty	93.27	84.6	<b>10.25</b>	18289
Orchid Pharma	1012.35	918.25	<b>10.25</b>	10270
Indo Tech Trans	2233.25	2025.7	<b>10.25</b>	17591
SEMAC CONSULT	369.8	335.45	<b>10.24</b>	306
Digikore	214.25	194.35	<b>10.24</b>	2600
63 Moons Tech	753.7	683.7	<b>10.24</b>	29173

\* the % price rise of the last 3 days

Nifty 50 stocks - Summary Details											
Symbol	LTP	Chng	% Chng	Volume (lacs)	Turnover (crs.)	52w High	Diff with 52w H	52w Low	Diff with 52w L	365 days % chng	30 days % chng
NIFTY 50	22547.55	-5.80	-0.03%	2502.75	24917.34	26277.35	14.19%	21281.45	5.95%	-2.33%	1.53%
ADANIEN	2130.00	14.85	0.70%	8.02	171.46	3743.90	43.11%	2025.00	5.19%	-8.64%	-35.38%
ADANIPTS	1078.70	8.30	0.78%	16.65	180.11	1621.40	33.47%	995.65	8.34%	-2.17%	-18.95%
APOLLOHOSP	6255.00	3.60	0.06%	4.21	263.18	7545.35	17.10%	5693.20	9.87%	-7.32%	-7.72%
ASIANPAINT	2218.10	-28.10	-1.25%	9.48	212.26	3394.90	34.66%	2185.70	1.48%	-0.72%	-24.77%
AXISBANK	1008.75	-1.30	-0.13%	57.08	574.63	1339.65	24.70%	933.50	8.06%	6.49%	-7.91%
BAJAJ-AUTO	8420.25	-26.70	-0.32%	2.37	199.87	12774.00	34.08%	7890.00	6.72%	0.54%	0.12%
BAJAJFINSV	1872.00	14.20	0.76%	17.61	330.80	2029.90	7.78%	1419.05	31.92%	7.47%	14.92%
BAJFINANCE	8472.00	117.05	1.40%	10.99	931.33	8662.80	2.20%	6187.80	36.91%	12.32%	24.74%
BEL	256.10	-0.25	-0.10%	147.71	380.11	340.50	24.79%	179.10	42.99%	-5.11%	24.87%
BHARTIARTL	1638.45	37.15	2.32%	62.87	1027.24	1779.00	7.90%	1099.00	49.09%	-2.64%	42.24%
BPCL	248.15	-2.85	-1.14%	41.73	104.18	376.00	34.00%	242.20	2.46%	-4.85%	-59.38%
BRITANNIA	4795.00	-9.30	-0.19%	4.80	230.07	6469.90	25.89%	4641.00	3.32%	-5.83%	-2.68%
CIPLA	1458.00	-18.75	-1.27%	9.93	146.08	1702.05	14.34%	1317.25	10.69%	4.63%	0.71%
COALINDIA	362.00	-2.80	-0.77%	45.25	163.28	543.55	33.40%	349.25	3.65%	-4.76%	-17.82%
DRREDDY	1128.50	-36.05	-3.10%	64.63	734.17	1421.49	20.61%	1120.00	0.76%	-4.89%	-81.92%
EICHERMOT	4997.75	-13.05	-0.26%	4.03	202.23	5575.50	10.36%	3672.00	36.10%	-3.76%	27.60%
GRASIM	2370.70	-23.00	-0.96%	4.97	118.38	2877.75	17.62%	2128.60	11.37%	-3.90%	9.08%
HCLTECH	1635.10	-8.95	-0.54%	19.51	320.19	2012.20	18.74%	1235.00	32.40%	-8.30%	-1.30%
HDFCBANK	1680.85	3.75	0.22%	120.69	2029.82	1880.00	10.59%	1397.30	20.29%	1.65%	18.06%
HDFCLIFE	620.00	3.00	0.49%	16.07	99.39	761.20	18.55%	511.40	21.24%	-0.66%	6.25%
HEROMOTOCO	3817.85	-67.00	-1.72%	6.61	254.55	6246.25	38.88%	3757.65	1.60%	-4.12%	-14.04%
HINDALCO	622.55	-19.35	-3.01%	102.50	637.50	772.65	19.43%	499.00	24.76%	5.77%	23.84%
HINDUNILVR	2254.00	12.55	0.56%	19.88	448.59	3035.00	25.73%	2172.05	3.77%	-5.35%	-6.38%
ICICIBANK	1225.80	7.45	0.61%	110.59	1354.74	1362.35	10.02%	1038.50	18.04%	0.76%	14.80%
INDUSINDBK	1029.90	0.75	0.07%	36.29	375.41	1576.35	34.67%	923.70	11.50%	8.24%	-30.48%
INFY	1766.75	2.65	0.15%	50.93	899.47	2006.45	11.95%	1358.35	30.07%	-5.94%	5.20%
ITC	404.00	2.10	0.52%	157.61	636.90	528.50	23.56%	396.20	1.97%	-8.99%	-2.31%
JSWSTEEL	958.00	-8.80	-0.91%	10.95	105.41	1063.00	9.88%	761.75	25.76%	3.68%	17.76%
KOTAKBANK	1966.90	0.80	0.04%	40.20	791.52	1994.90	1.40%	1543.85	27.40%	4.24%	14.04%
LT	3229.00	-28.70	-0.88%	25.29	816.16	3963.50	18.53%	3175.05	1.70%	-5.80%	-3.84%
M&M	2767.00	57.80	2.13%	49.16	1365.73	3270.95	15.41%	1788.80	54.68%	-3.29%	40.38%
MARUTI	12448.65	103.45	0.84%	3.63	452.31	13680.00	9.00%	10725.00	16.07%	3.15%	7.02%
NESTLEIND	2250.50	30.10	1.36%	6.43	144.46	2778.00	18.99%	2131.25	5.60%	0.57%	-13.90%
NTPC	316.80	-3.30	-1.03%	106.86	340.09	448.45	29.36%	292.80	8.20%	-1.10%	-5.23%
ONGC	233.15	-1.20	-0.51%	55.19	129.51	345.00	32.42%	223.00	4.55%	-8.64%	-13.91%
POWERGRID	255.25	-3.90	-1.50%	212.87	545.77	366.25	30.31%	252.20	1.21%	-12.40%	-8.09%
RELIANCE	1202.00	-12.55	-1.03%	115.52	1397.32	1608.80	25.29%	1193.35	0.72%	-2.55%	-59.34%
SBILIFE	1473.30	-13.20	-0.89%	9.65	141.80	1936.00	23.90%	1307.70	12.66%	3.20%	-2.79%
SBIN	710.05	-6.35	-0.89%	86.00	613.64	912.00	22.14%	710.00	0.01%	-3.73%	-5.62%
SHRIRAMFIN	575.20	-2.00	-0.35%	62.23	359.52	730.45	21.25%	438.60	31.14%	9.43%	-76.40%
SUNPHARMA	1611.55	-27.95	-1.70%	28.37	458.69	1960.35	17.79%	1377.20	17.02%	-10.03%	5.01%
TATACONSUM	1004.95	2.55	0.25%	16.63	167.29	1256.44	20.02%	882.90	13.82%	1.01%	-13.61%
TATAMOTORS	660.30	-7.95	-1.19%	102.51	682.05	1179.00	43.99%	660.00	0.05%	-8.97%	-28.71%
TATASTEEL	137.00	-0.65	-0.47%	235.75	324.30	184.60	25.79%	122.62	11.73%	6.10%	-5.36%
TCS	3627.00	-48.60	-1.32%	41.02	1492.54	4592.25	21.02%	3591.50	0.99%	-11.48%	-9.29%
TECHM	1589.00	-24.70	-1.53%	14.25	228.15	1807.70	12.10%	1162.95	36.64%	-6.35%	22.04%
TITAN	3200.75	27.75	0.87%	6.42	204.99	3867.00	17.23%	3055.65	4.75%	-6.74%	-14.06%
TRENT	4944.00	-122.00	-2.41%	9.76	489.58	8345.00	40.75%	3750.25	31.83%	-7.73%	30.37%
ULTRACEMCO	10950.00	-92.65	-0.84%	2.96	324.23	12145.35	9.84%	9250.00	18.38%	-2.15%	10.42%
WIPRO	291.30	-3.75	-1.27%	108.10	316.34	324.60	10.26%	208.50	39.71%	-7.83%	-44.97%

## Disclaimer / Disclosures

### ANALYST CERTIFICATION

I, Mrs. Vaishali Parekh B.com, Research Analyst, author and the name subscribed to this report, hereby certify that all of the views expressed in this research report accurately reflect our views about the subject issuer(s) or securities. We also certify that no part of our compensation was, is, or will be directly or indirectly related to the specific recommendation(s) or view(s) in this report.

Terms & conditions and other disclosures:

Prabhudas Lilladher Pvt. Ltd, Mumbai, India (hereinafter referred to as "PL") is engaged in the business of Stock Broking, Portfolio Manager, Depository Participant and distribution for third party financial products. PL is a subsidiary of Prabhudas Lilladher Advisory Services Pvt Ltd. which has its various subsidiaries engaged in business of commodity broking, investment banking, financial services (margin funding) and distribution of third party financial/other products, details in respect of which are available at [www.plindia.com](http://www.plindia.com)

This document has been prepared by the Research Division of PL and is meant for use by the recipient only as information and is not for circulation. This document is not to be reported or copied or made available to others without prior permission of PL. It should not be considered or taken as an offer to sell or a solicitation to buy or sell any security.

The information contained in this report has been obtained from sources that are considered to be reliable. However, PL has not independently verified the accuracy or completeness of the same. Neither PL nor any of its affiliates, its directors or its employees accepts any responsibility of whatsoever nature for the information, statements and opinion given, made available or expressed herein or for any omission therein.

Recipients of this report should be aware that past performance is not necessarily a guide to future performance and value of investments can go down as well. The suitability or otherwise of any investments will depend upon the recipient's particular circumstances and, in case of doubt, advice should be sought from an independent expert/advisor.

Either PL or its affiliates or its directors or its employees or its representatives or its clients or their relatives may have position(s), make market, act as principal or engage in transactions of securities of companies referred to in this report and they may have used the research material prior to publication.

PL may from time to time solicit or perform investment banking or other services for any company mentioned in this document.

PL is registered as Research Analyst under Securities and Exchange Board of India (Research Analysts) Regulations, 2014 PL submits that no material disciplinary action has been taken on us by any Regulatory Authority impacting Equity Research Analysis activities.

PL or its research analysts or its associates or his relatives do not have any financial interest in the subject company.

PL or its research analysts or its associates or his relatives do not have actual/beneficial ownership of one per cent or more securities of the subject company at the end of the month immediately preceding the date of publication of the research report.

PL or its research analysts or its associates or his relatives do not have any material conflict of interest at the time of publication of the research report.

PL or its associates might have received compensation from the subject company in the past twelve months.

PL or its associates might have managed or co-managed public offering of securities for the subject company in the past twelve months or mandated by the subject company for any other assignment in the past twelve months.

PL or its associates might have received any compensation for investment banking or merchant banking or brokerage services from the subject company in the past twelve months.

PL or its associates might have received any compensation for products or services other than investment banking or merchant banking or brokerage services from the subject company in the past twelve months PL or its associates might have received any compensation or other benefits from the subject company or third party in connection with the research report.

PL encourages independence in research report preparation and strives to minimize conflict in preparation of research report. PL or its analysts did not receive any compensation or other benefits from the subject Company or third party in connection with the preparation of the research report. PL or its Research Analysts do not have any material conflict of interest at the time of publication of this report.

It is confirmed that Mrs.Vaishali Parekh B.com, Research Analyst of this report has not received any compensation from the companies mentioned in the report in the preceding twelve months compensation of our Research Analysts is not based on any specific merchant banking, investment banking or brokerage service transactions.

The Research analysts for this report certifies that all of the views expressed in this report accurately reflect his or her personal views about the subject company or companies and its or their securities, and no part of his or her compensation was, is or will be, directly or indirectly related to specific recommendations or views expressed in this report.

The research analysts for this report has not served as an officer, director or employee of the subject company PL or its research analysts have not engaged in market making activity for the subject company

Our sales people, traders, and other professionals or affiliates may provide oral or written market commentary or trading strategies to our clients that reflect opinions that are contrary to the opinions expressed herein, and our proprietary trading and investing businesses may make investment decisions that are inconsistent with the recommendations expressed herein. In reviewing these materials, you should be aware that any or all of the foregoing, among other things, may give rise to real or potential conflicts of interest.

PL and its associates, their directors and employees may (a) from time to time, have a long or short position in, and buy or sell the securities of the subject company or (b) be engaged in any other transaction involving such securities and earn brokerage or other compensation or act as a market maker in the financial instruments of the subject company or act as an advisor or lender/borrower to the subject company or may have any other potential conflict of interests with respect to any recommendation and other related information and opinions.