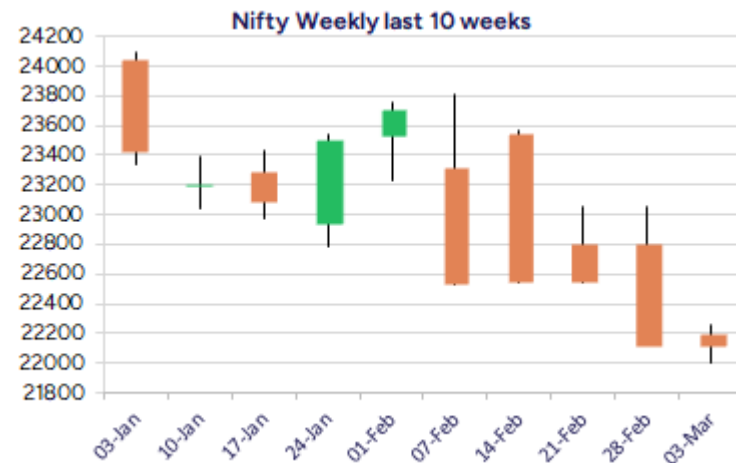
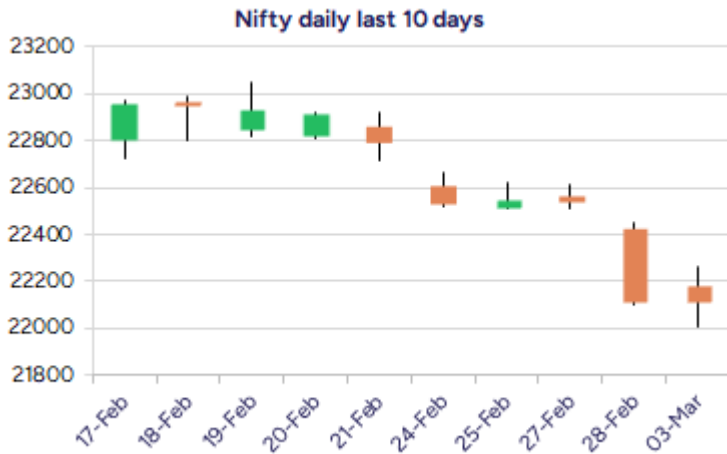


\* Sensex 73085.94 -112.16

\* Nifty 22119.30 -05.40

\* Bank Nifty 48114.30 -230.40



\*Blue candle → Close rate > Open rate \* Red candle → Close rate < Open rate

## Market Preview

### Nifty retests 22000 zone

Nifty on the back of weak cues retested the 22000 zone in the morning session thereafter witnessing some pullback to close the session on a flat note. BankNifty respected the important and crucial support zone near 47900 level and closed just above the 48000 zone. The market breadth ended weak with the advance decline indicating 2:3 ratio at close.

## Market Forecast

### Nifty daily range 22000-22300

Nifty dragged further in the morning session to touch the 22000 zone where it showed some resilience and thereafter witnessing a pullback ended the session on a flat note with some of the select stocks indicating some revival. The index is precariously placed with bias and sentiment getting worse with the cues indicating a downward slide with targets of 21800 and 21300 levels expected in the coming days. A decisive move above 22500 zone is necessary to regain some lost strength and thereafter expect for further rise and stability.

BankNifty, with the weak bias maintained, has once again retested the previous low of 47850 zone and with a decisive breach below, shall trigger for fresh intensified selling pressure in the coming days. On the upside, only a significant move past the important 50EMA level of 49650 zone shall improve the bias and expect for further upward move, with HDFC Bank and ICICI Bank still maintaining the bias as of now.

The support for the day is seen at 22000 levels while the resistance is seen at 22300 levels. BankNifty would have the daily range of 47700-48600 levels.

Indices	Period	Closing	% Chng	Trend	Reversal	2 Sup	1 Sup	Pivot	1 Res	2 Res
Nifty	Daily	22119.30	-0.02%	-15	22266.95	21872	21996	22129	22252	22385
	Weekly	22124.70	-2.94%	-3	22686.90	21736	21930	22299	22494	22862
	Monthly	23508.40	-0.58%	-5	26264.60	22068	22788	23507	24228	24947
Bank Nifty	Daily	48114.30	-0.48%	-6	48440.65	47443	47779	48177	48512	48910
	Weekly	48344.70	-1.30%	-3	48721.55	47571	47958	48465	48852	49359
	Monthly	49587.20	-2.50%	-5	52793.25	45873	47730	49701	51559	53530
Sensex	Daily	73085.94	-0.15%	-15	73597.55	72308	72697	73173	73562	74039
	Weekly	73198.10	-2.81%	-3	75057.20	71983	72591	73749	74356	75515
	Monthly	77500.57	-0.82%	-5	85764.50	72808	75154	77614	79960	82419

## Daily Trend turned Up

Scrip Name	LCP	Curr Trnd	Reversal
ABB	5088.3	-2	5058.75
APOLLOHOSP	6170.6	-4	6145.85
ABREL	1990.2	-4	1911.35
CUB	149.35	-16	147.7
ESCORTS	2947.4	-3	2916.5
GLENMARK	1313.2	-13	1296.9
GODREJPROP	2002.75	-2	1964
HAL	3187.05	-13	3184.5
CUMMINS	2824.8	-1	2762.5
LUPINLTD	1952.95	-13	1906.45
RECLTD	377.8	-3	374.95
TVSMOTOR	2323.85	-2	2303.75

\* Trends turned Up after a significant period

## Daily Trend turned Down

Scrip Name	LCP	Curr Trnd	Reversal
AXISBANK	1007.25	7	1013.05
COALINDIA	360.35	2	364
COLPAL	2434	6	2456.8
JUSTDIAL	793.1	7	847.9
RALLIS	202.11	5	210.25
REPCOHOME	320.85	6	331.2
UJJIVAN	31.38	2	31.7

\* Trends turned Down after a significant period

## Gainers - Losers ( Nifty 500 Stocks )

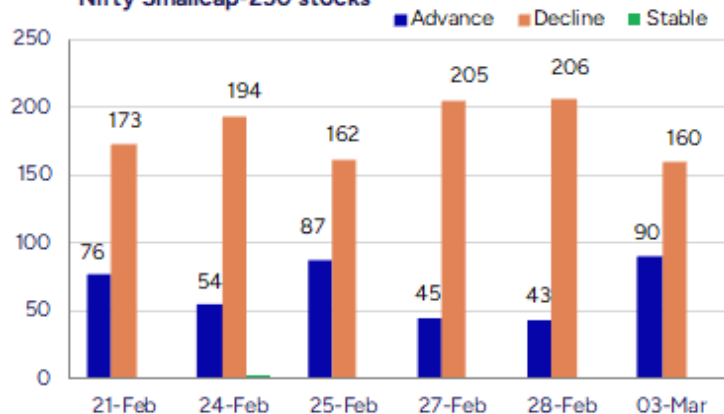
## Gainers

Scrip Name	LCP	% Change	Volume
Coffee Day	25.53	19.97	3389854
Indoco Remedies	224.37	14.2	1040913
Ruby Mills	203.35	12.21	742955
Anupam Rasayan	709.3	12.16	615332
Narayana Hruda	1615.6	11.84	11891048
Authum Invest	1576.35	11.83	866705
Akash Infraproj	28.41	10.42	67184

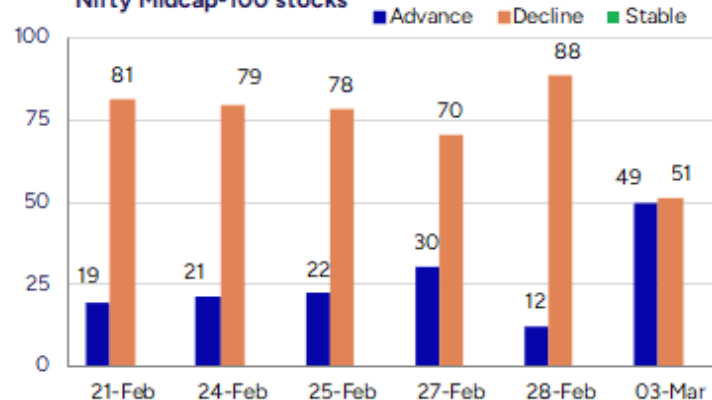
## Losers

Scrip Name	LCP	% Change	Volume
Uniinfo Telecom	19.36	-20	101142
Manorama Indust	773.6	-18.82	466454
Mangalam Drugs	76.61	-16.66	149797
Shigan Quantum	62.45	-14.45	196500
Kody Technolab	801.85	-13.01	29300
Utssav CZ Gold	151.5	-12.81	195000
Readymix Constr	57.4	-12.77	65000

## Nifty Smallcap-250 stocks



## Nifty Midcap-100 stocks



### Nifty Daily chart with RSI indicator



### BankNifty Daily chart with RSI indicator



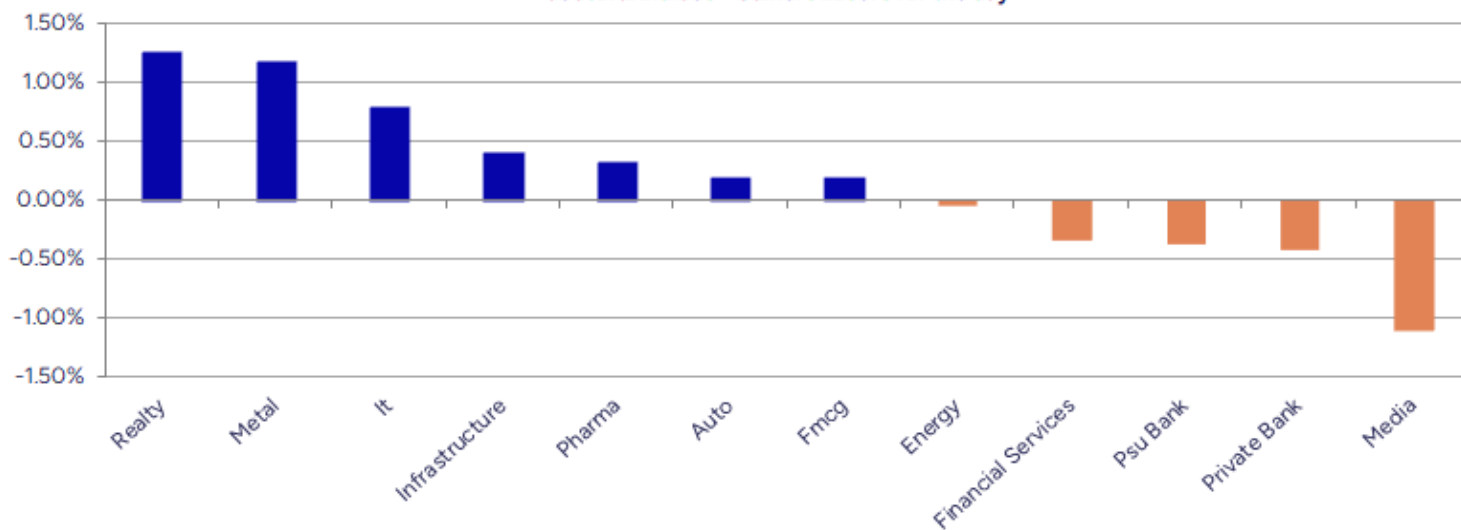
Breakouts - Cross above 200 DMA			
Company Name	LCP	Change %	200 DMA
Authum Invest	1576.35	5.66	1491.91
Aether Ind.	895.95	2.79	871.67
Sapphire Foods	326.05	1.78	320.34
Eicher Motors	4906.6	0.75	4870.25
Medplus Health	724.35	0.75	718.93
Jubilant Food	633.35	0.71	628.87
J. K. Cement	4448.75	0.64	4420.51
Kanpur Plast	119.29	0.42	118.79
GlaxoSmithKline	2520.1	0.22	2514.57
AstraZeneca	6858.2	0.07	6853.33
Som Distilleries	112.21	0.04	112.17

Breakdown - Cross below 200 DMA			
Company Name	LCP	Change %	200 DMA
Manorama Indust	773.6	-12.66	885.71
KDDL	2776.2	-3.53	2877.67
Interiors & Mor	288	-3.42	298.19
Gokul Agro	249	-3.37	257.69
Five-Star Busin	719.55	-3.22	743.5
Kitex Garments	153.75	-2.73	158.06
Royal Orchid	343.95	-1.98	350.89
NK Industries	57.19	-1.23	57.9
Jeena Sikho	1530.85	-1.20	1549.48
Robust Hotels	204.9	-1.18	207.34
Medicamen Bio	480.1	-1.07	485.31
Gillanders Arbu	98.08	-1.05	99.12
Banaras Beads	113.94	-0.99	115.08
Global Pet	107	-0.80	107.86
Nitco	99.92	-0.69	100.61
Deep Ind	431.5	-0.31	432.86
Max Healthcare	973.8	-0.16	975.37
Krishna Institu	518.6	-0.04	518.79

\* Stocks crossing above its Simple Moving Average (200DMA)

\* Stocks crossing below its Simple Moving Average (200DMA)

Sectoral Indices - Gainers Losers for the day



Stocks witnessing a volume surge as compared to their 5 day average volur

Watch out for the stocks that have seen a huge spurt in its share price over the last three days

Volume Shockers - NSE					
Company name	LCP	% Chg	Volume	Avg Vol *	% Chg
Balaxi Pharma	50.55	-5.16	9127955	38449	23640
Jindal Worldwid	77.5	-6.29	6163028	138074	4364
Narayana Hruda	1596.35	10.51	11627696	272555	4166
Krishna Institu	526	0.95	2465541	59456	4047
Transwarranty	13.6	-4.23	408676	12848	3081
CreditAccess Gr	900	-2.08	4363175	198052	2103
Windlas	825.35	8.17	704718	35427	1889
Shigan Quantum	62.5	-14.38	160500	8100	1881
Transformers	362.45	-5.99	2605807	131705	1879
Varun Beverages	456.65	4.72	27064089	1424186	1800
Polycab	4877.9	3.49	4362071	236448	1745
BEW Engineering	155.6	-0.89	20500	1125	1722
Sky Gold	334	5	445673	25989	1615
Jindal Drilling	796	1.82	548352	34855	1473
Shakti Pumps	786.8	-2.62	565603	38631	1364
Diamond Power	83.11	-3.08	98460	6800	1348
SML Isuzu	1132.95	7.31	176047	12295	1332
KSB Pumps	615.5	-0.24	1076139	77755	1284
Inox India	927.75	-3.26	2403038	175653	1268
Exxaro	7.72	-1.15	696698	51457	1254

\* the Average Volume of last 5 days

Price Shockers - NSE				
Company name	LCP	3 days *	% Chg	Volume
Mangalam Alloys	33.2	27.4	21.17	40000
Aether Ind	895.95	769.6	16.42	227671
Dolphin Offshor	239.87	207.25	15.74	3360
Anupam Rasayan	709.3	635.85	11.55	615332
Narayana Hruda	1615.6	1465.55	10.24	11891267
Madhya Pradesh	33.05	30	10.17	0

\* the % price rise of the last 3 days



## Nifty 50 stocks - Summary Details

Symbol	LTP	Chng	% Chng	Volume (lacs)	Turnover (crs.)	52w High	Diff with 52w H	52w Low	Diff with 52w L	365 days % chng	30 days % chng
NIFTY 50	22119.30	-5.40	-0.02%	2823.93	25941.47	26277.35	15.82%	21281.45	3.94%	-5.89%	-0.96%
ADANIANT	2122.00	26.00	1.24%	15.93	331.07	3743.90	43.32%	2025.00	4.79%	-8.38%	-36.84%
ADANIPTS	1053.05	-16.35	-1.53%	22.74	239.54	1621.40	35.05%	995.65	5.77%	-2.72%	-19.11%
APOLLOHOSP	6182.00	129.40	2.14%	3.74	229.43	7545.35	18.07%	5693.20	8.59%	-11.13%	-0.54%
ASIANPAINT	2180.40	0.65	0.03%	9.59	206.74	3394.90	35.77%	2129.00	2.41%	-5.26%	-23.02%
AXISBANK	1006.00	-9.55	-0.94%	67.63	679.37	1339.65	24.91%	933.50	7.77%	2.99%	-7.61%
BAJAJ-AUTO	7710.00	-192.90	-2.44%	4.97	386.41	12774.00	39.64%	7679.60	0.40%	-10.68%	-1.71%
BAJAJFINSV	1840.00	-32.30	-1.73%	10.47	192.43	2029.90	9.36%	1419.05	29.66%	7.85%	16.05%
BAJFINANCE	8647.00	116.70	1.37%	8.75	749.69	8739.00	1.05%	6187.80	39.74%	8.18%	29.81%
BEL	257.50	11.25	4.57%	246.42	622.66	340.50	24.38%	179.10	43.77%	-15.86%	19.77%
BHARTIARTL	1597.85	27.65	1.76%	69.94	1111.50	1779.00	10.18%	1099.00	45.39%	-3.45%	39.12%
BPCL	242.60	5.30	2.23%	68.65	164.37	376.00	35.48%	234.01	3.67%	-9.12%	-61.93%
BRITANNIA	4600.10	4.65	0.10%	4.12	189.55	6469.90	28.90%	4548.15	1.14%	-10.41%	-6.74%
CIPLA	1407.00	-0.50	-0.04%	8.54	120.04	1702.05	17.33%	1317.25	6.81%	-4.86%	-4.31%
COALINDIA	360.60	-8.75	-2.37%	126.76	454.30	543.55	33.66%	349.25	3.25%	-6.71%	-17.25%
DRREDDY	1121.05	4.55	0.41%	18.11	202.09	1421.49	21.14%	1103.90	1.55%	-8.28%	-81.97%
EICHERMOT	4914.00	140.40	2.94%	5.04	246.26	5575.50	11.86%	3672.00	33.82%	-8.10%	24.20%
GRASIM	2380.00	73.35	3.18%	7.90	186.71	2877.75	17.30%	2128.60	11.81%	-8.06%	2.30%
HCLTECH	1573.80	-1.25	-0.08%	17.85	281.89	2012.20	21.79%	1235.00	27.43%	-8.72%	-4.20%
HDFCBANK	1703.55	-28.85	-1.67%	106.03	1812.26	1880.00	9.39%	1397.30	21.92%	1.98%	21.08%
HDFCLIFE	618.80	10.30	1.69%	36.24	223.33	761.20	18.71%	511.40	21.00%	-4.63%	3.14%
HEROMOTOCO	3630.50	-50.60	-1.37%	6.92	252.04	6246.25	41.88%	3617.00	0.37%	-15.17%	-18.33%
HINDALCO	638.20	3.85	0.61%	53.68	339.41	772.65	17.40%	499.00	27.90%	6.74%	22.20%
HINDUNILVR	2180.00	-10.25	-0.47%	13.06	283.69	3035.00	28.17%	2158.50	1.00%	-11.28%	-9.11%
ICICIBANK	1208.70	4.60	0.38%	81.59	986.76	1362.35	11.28%	1038.50	16.39%	-3.89%	10.78%
INDUSINDBK	984.40	-5.70	-0.58%	61.58	595.12	1576.35	37.55%	923.70	6.57%	-0.11%	-35.15%
INFY	1711.00	23.30	1.38%	75.05	1284.13	2006.45	14.73%	1358.35	25.96%	-10.22%	1.99%
ITC	397.00	2.00	0.51%	107.03	424.86	528.50	24.88%	391.20	1.48%	-11.73%	-3.54%
JSWSTEEL	976.15	25.45	2.68%	17.45	169.06	1063.00	8.17%	761.75	28.15%	0.60%	13.69%
KOTAKBANK	1914.95	12.00	0.63%	26.08	498.49	1994.90	4.01%	1543.85	24.04%	0.09%	10.14%
LT	3198.20	34.35	1.09%	13.52	432.17	3963.50	19.31%	3141.00	1.82%	-11.31%	-12.93%
M&M	2612.00	26.90	1.04%	43.41	1140.78	3270.95	20.15%	1788.80	46.02%	-13.54%	31.03%
MARUTI	11815.50	-130.35	-1.09%	1.87	222.02	13680.00	13.63%	10725.00	10.17%	-2.96%	2.80%
NESTLEIND	2167.45	-22.20	-1.01%	5.22	113.56	2778.00	21.98%	2131.25	1.70%	-5.34%	-15.83%
NTPC	315.00	3.55	1.14%	97.80	304.47	448.45	29.76%	292.80	7.58%	-3.87%	-9.33%
ONGC	225.45	0.20	0.09%	119.28	265.43	345.00	34.65%	218.36	3.25%	-14.23%	-16.74%
POWERGRID	252.65	1.80	0.72%	98.73	248.00	366.25	31.02%	247.30	2.16%	-16.84%	-12.81%
RELIANCE	1174.00	-26.10	-2.17%	179.45	2096.96	1608.80	27.03%	1156.00	1.56%	-5.14%	-59.79%
SBILIFE	1412.00	-18.50	-1.29%	10.56	150.94	1936.00	27.07%	1307.70	7.98%	-3.58%	-7.24%
SBIN	696.15	7.35	1.07%	105.98	730.84	912.00	23.67%	680.00	2.38%	-10.88%	-10.45%
SHRIRAMFIN	622.25	4.95	0.80%	102.84	639.77	730.45	14.81%	438.60	41.87%	13.53%	-74.81%
SUNPHARMA	1584.00	-9.25	-0.58%	14.25	227.13	1960.35	19.20%	1377.20	15.02%	-8.64%	2.18%
TATACONSUM	954.25	-9.45	-0.98%	13.23	126.52	1256.44	24.05%	882.90	8.08%	-5.95%	-19.76%
TATAMOTORS	621.40	0.75	0.12%	183.61	1134.37	1179.00	47.29%	606.30	2.49%	-13.33%	-36.50%
TATASTEEL	138.32	1.12	0.82%	311.54	426.87	184.60	25.07%	122.62	12.80%	1.92%	-8.50%
TCS	3506.00	22.75	0.65%	49.90	1745.60	4592.25	23.65%	3457.00	1.42%	-15.30%	-14.93%
TECHM	1491.50	3.65	0.25%	28.51	427.05	1807.70	17.49%	1162.95	28.25%	-11.14%	16.99%
TITAN	3082.55	5.30	0.17%	5.16	159.04	3867.00	20.29%	3055.65	0.88%	-11.83%	-18.29%
TRENT	4952.60	101.05	2.08%	14.15	695.89	8345.00	40.65%	3750.25	32.06%	-15.67%	24.36%
ULTRACEMCO	10348.00	219.55	2.17%	8.35	865.59	12145.35	14.80%	9250.00	11.87%	-11.83%	-0.07%
WIPRO	283.30	5.65	2.03%	114.71	325.26	324.60	12.72%	208.50	35.88%	-10.98%	-46.51%

## Disclaimer / Disclosures

### ANALYST CERTIFICATION

I, Mrs. Vaishali Parekh B.com, Research Analyst, author and the name subscribed to this report, hereby certify that all of the views expressed in this research report accurately reflect our views about the subject issuer(s) or securities. We also certify that no part of our compensation was, is, or will be directly or indirectly related to the specific recommendation(s) or view(s) in this report.

Terms & conditions and other disclosures:

Prabhudas Lilladher Pvt. Ltd, Mumbai, India (hereinafter referred to as "PL") is engaged in the business of Stock Broking, Portfolio Manager, Depository Participant and distribution for third party financial products. PL is a subsidiary of Prabhudas Lilladher Advisory Services Pvt Ltd. which has its various subsidiaries engaged in business of commodity broking, investment banking, financial services (margin funding) and distribution of third party financial/other products, details in respect of which are available at [www.plindia.com](http://www.plindia.com)

This document has been prepared by the Research Division of PL and is meant for use by the recipient only as information and is not for circulation. This document is not to be reported or copied or made available to others without prior permission of PL. It should not be considered or taken as an offer to sell or a solicitation to buy or sell any security.

The information contained in this report has been obtained from sources that are considered to be reliable. However, PL has not independently verified the accuracy or completeness of the same. Neither PL nor any of its affiliates, its directors or its employees accepts any responsibility of whatsoever nature for the information, statements and opinion given, made available or expressed herein or for any omission therein.

Recipients of this report should be aware that past performance is not necessarily a guide to future performance and value of investments can go down as well. The suitability or otherwise of any investments will depend upon the recipient's particular circumstances and, in case of doubt, advice should be sought from an independent expert/advisor.

Either PL or its affiliates or its directors or its employees or its representatives or its clients or their relatives may have position(s), make market, act as principal or engage in transactions of securities of companies referred to in this report and they may have used the research material prior to publication.

PL may from time to time solicit or perform investment banking or other services for any company mentioned in this document.

PL is registered as Research Analyst under Securities and Exchange Board of India (Research Analysts) Regulations, 2014 PL submits that no material disciplinary action has been taken on us by any Regulatory Authority impacting Equity Research Analysis activities.

PL or its research analysts or its associates or his relatives do not have any financial interest in the subject company.

PL or its research analysts or its associates or his relatives do not have actual/beneficial ownership of one per cent or more securities of the subject company at the end of the month immediately preceding the date of publication of the research report.

PL or its research analysts or its associates or his relatives do not have any material conflict of interest at the time of publication of the research report.

PL or its associates might have received compensation from the subject company in the past twelve months.

PL or its associates might have managed or co-managed public offering of securities for the subject company in the past twelve months or mandated by the subject company for any other assignment in the past twelve months.

PL or its associates might have received any compensation for investment banking or merchant banking or brokerage services from the subject company in the past twelve months.

PL or its associates might have received any compensation for products or services other than investment banking or merchant banking or brokerage services from the subject company in the past twelve months PL or its associates might have received any compensation or other benefits from the subject company or third party in connection with the research report.

PL encourages independence in research report preparation and strives to minimize conflict in preparation of research report. PL or its analysts did not receive any compensation or other benefits from the subject Company or third party in connection with the preparation of the research report. PL or its Research Analysts do not have any material conflict of interest at the time of publication of this report.

It is confirmed that Mrs.Vaishali Parekh B.com, Research Analyst of this report has not received any compensation from the companies mentioned in the report in the preceding twelve months compensation of our Research Analysts is not based on any specific merchant banking, investment banking or brokerage service transactions.

The Research analysts for this report certifies that all of the views expressed in this report accurately reflect his or her personal views about the subject company or companies and its or their securities, and no part of his or her compensation was, is or will be, directly or indirectly related to specific recommendations or views expressed in this report.

The research analysts for this report has not served as an officer, director or employee of the subject company PL or its research analysts have not engaged in market making activity for the subject company

Our sales people, traders, and other professionals or affiliates may provide oral or written market commentary or trading strategies to our clients that reflect opinions that are contrary to the opinions expressed herein, and our proprietary trading and investing businesses may make investment decisions that are inconsistent with the recommendations expressed herein. In reviewing these materials, you should be aware that any or all of the foregoing, among other things, may give rise to real or potential conflicts of interest.

PL and its associates, their directors and employees may (a) from time to time, have a long or short position in, and buy or sell the securities of the subject company or (b) be engaged in any other transaction involving such securities and earn brokerage or other compensation or act as a market maker in the financial instruments of the subject company or act as an advisor or lender/borrower to the subject company or may have any other potential conflict of interests with respect to any recommendation and other related information and opinions.