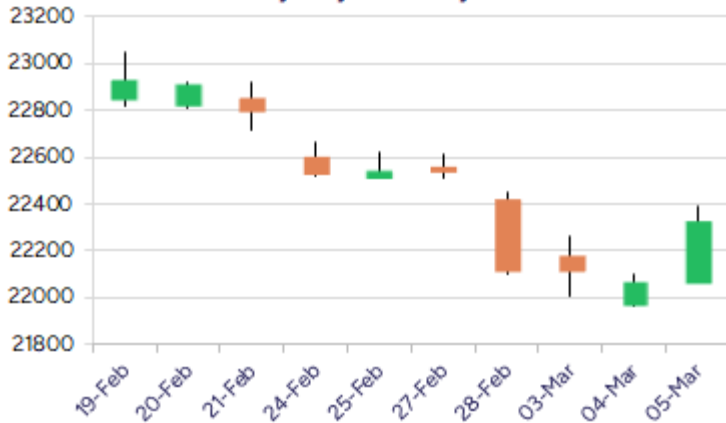


* Sensex 73730.23 + 740.30

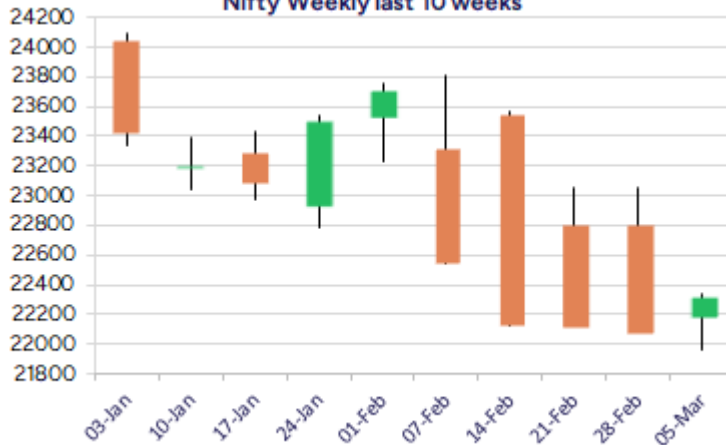
* Nifty 22337.30 + 254.65

* Bank Nifty 48489.95 + 244.75

Nifty daily last 10 days



Nifty Weekly last 10 weeks



*Blue candle → Close rate > Open rate * Red candle → Close rate < Open rate

Market Preview

Nifty witnesses strong pullback; ends above 22300

Nifty after many losing sessions finally witnessed a strong pullback to close above the 22300 zone with sentiment eased out to some extent. BankNifty also witnessed continuation of the recovery to end near the 48500 zone. The market breadth closed on a strong note with the advance decline indicating a ratio of 8:1 at close.

Market Forecast

Nifty daily range 22200-22600

Nifty after a long streak of losing sessions finally indicated a strong pullback with a huge bullish candle formation to close above the 22300 zone with bias and sentiment improving and as mentioned earlier, a decisive breach above 22500 level shall establish conviction and thereafter, can expect for stability in the coming sessions. Active participation from the broader markets has eased out the pessimism to some extent which can trigger for further upward movement of the indices.

BankNifty, taking support near the 47900 zone has recovered to cross above the 48500 zone during the intraday session and can expect for further rise with initial target of 49600 level expected in the coming sessions. With the bias maintained intact till now, the crucial zone of 47900 level needs to be sustained to anticipate for further recovery on the index.

The support for the day is seen at 22200 levels while the resistance is seen at 22600 levels. BankNifty would have the daily range of 48000-49000 levels.

Indices	Period	Closing	% Chng	Trend	Reversal	2 Sup	1 Sup	Pivot	1 Res	2 Res
Nifty	Daily	22337.30	1.15%	1	21946.95	21940	22138	22267	22466	22594
	Weekly	22124.70	-2.94%	-3	22686.90	21736	21930	22299	22494	22862
	Monthly	23508.40	-0.58%	-5	26264.60	22068	22788	23507	24228	24947
Bank Nifty	Daily	48489.95	0.51%	1	48255.25	47979	48234	48446	48702	48913
	Weekly	48344.70	-1.30%	-3	48721.55	47571	47958	48465	48852	49359
	Monthly	49587.20	-2.50%	-5	52793.25	45873	47730	49701	51559	53530
Sensex	Daily	73730.23	1.01%	1	72739.20	72480	73105	73519	74145	74559
	Weekly	73198.10	-2.81%	-3	75057.20	71983	72591	73749	74356	75515
	Monthly	77500.57	-0.82%	-5	85764.50	72808	75154	77614	79960	82419

Daily Trend turned Up

Scrip Name	LCP	Curr Trnd	Reversal
AARTIIND	401.95	-7	385.7
BANKBARODA	205.22	-5	198.85
CANBK	85.02	-5	82.4
CONCOR	662.75	-6	638.55
EXIDEIND	356.4	-4	351.1
GLAXO	2693.3	-4	2647.05
GNFC	495.05	-15	489.6
HDFCAMC	3864.3	-5	3696.1
HSCL	434.45	-4	413.3
HUDCO	177.43	-5	169.75
ICICIBANK	1215.7	-8	1211.5
INDHOTEL	757.2	-5	721.25

* Trends turned Up after a significant period

Daily Trend turned Up

Scrip Name	LCP	Curr Trnd	Reversal
INFY	1711.5	-16	1704.3
JSWSTEELLTD	1002.7	-6	973.65
M&M	2726.6	-3	2624.25
M&MFIN	276	-3	270.05
MOTHERSUMI	123.94	-5	120.1
NATIONALUM	189.29	-5	181.8
NBCC	78.99	-5	74.9
TATAMOTORS	640.8	-7	629
TATAPOWER	351.4	-4	345.65
TORNTPOWER	1311.25	-3	1281.6
TVSMOTOR	2330.7	-1	2286.25
WABAG	1356.05	-4	1326.9

* Trends turned Up after a significant period

Gainers - Losers (Nifty 500 Stocks)

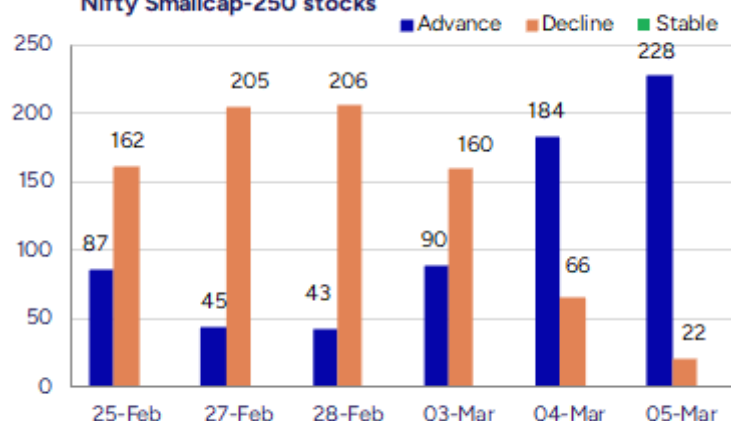
Gainers

Scrip Name	LCP	% Change	Volume
Man Industries	258.79	20	1443395
Shigan Quantum	75.6	20	43500
Ganesh Infra	131.4	19.95	608000
Arihant Capital	70.65	18.74	1205626
Quadrant Future	515.4	18.27	6545629
DRC Systems	21.44	17.09	514259
Manaksia Alumin	22.88	16.68	247412

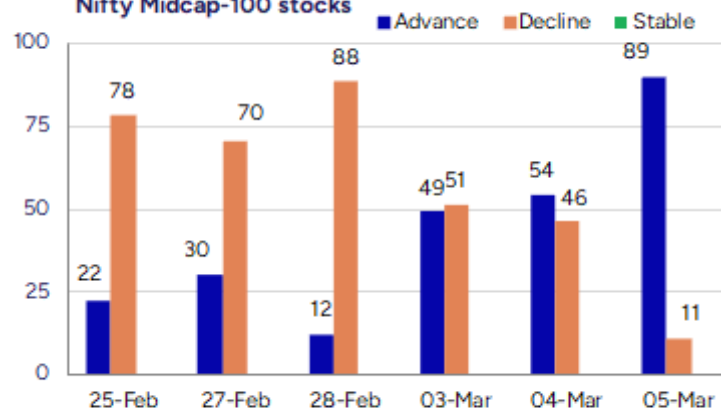
Losers

Scrip Name	LCP	% Change	Volume
Gensol Eng	372	-9.99	109268
Jindal Worldwid	64.35	-6.89	3999387
Anand Rathi	1895.7	-6.54	525023
Pramara	133.9	-5.94	33000
Unilex Colours	59.35	-5.42	8000
AGS Transact	17.11	-5.05	102441
Manav Infra Pro	11.3	-5.04	4000

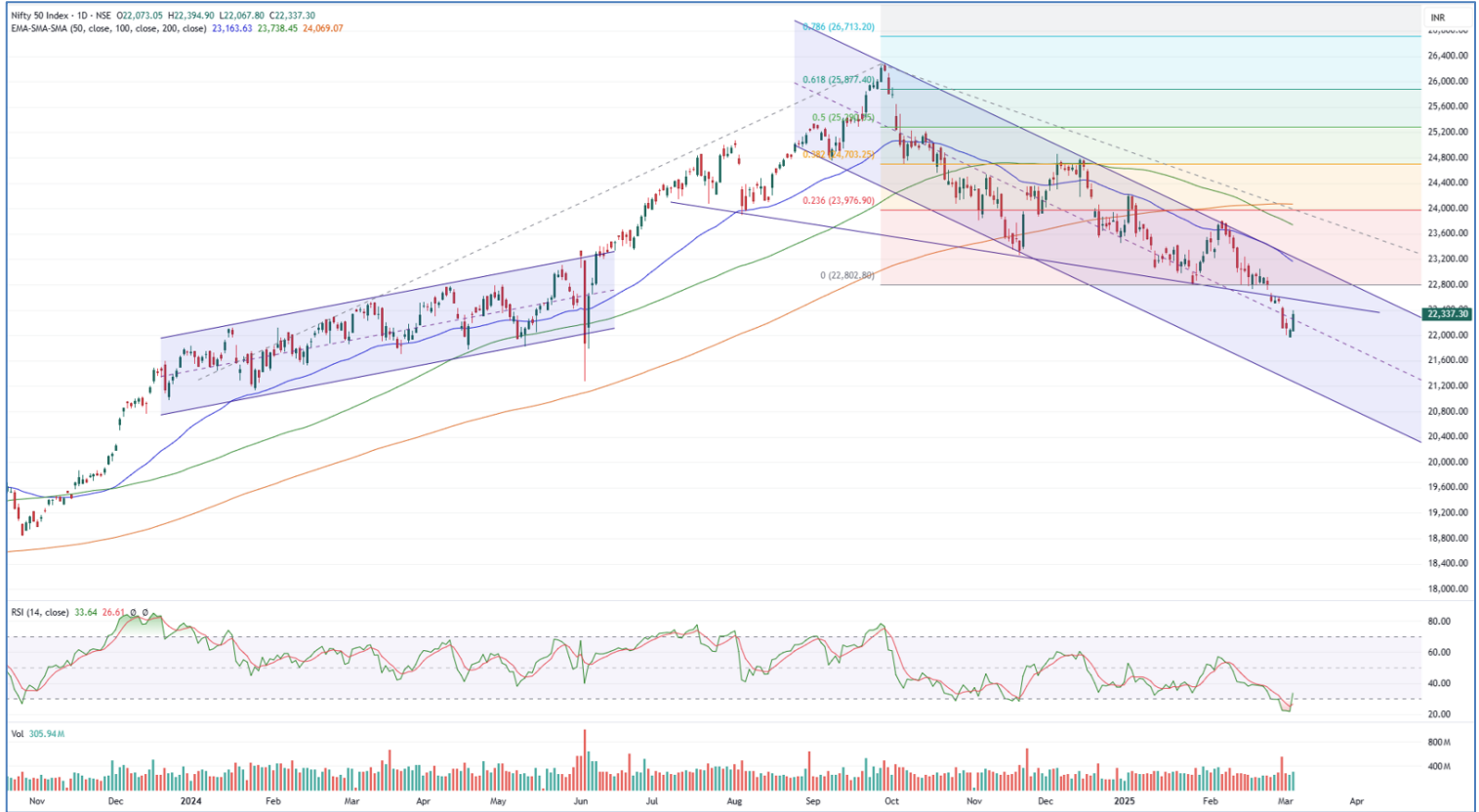
Nifty Smallcap-250 stocks



Nifty Midcap-100 stocks



Nifty Daily chart with RSI indicator



BankNifty Daily chart with RSI indicator



Breakouts - Cross above 200 DMA

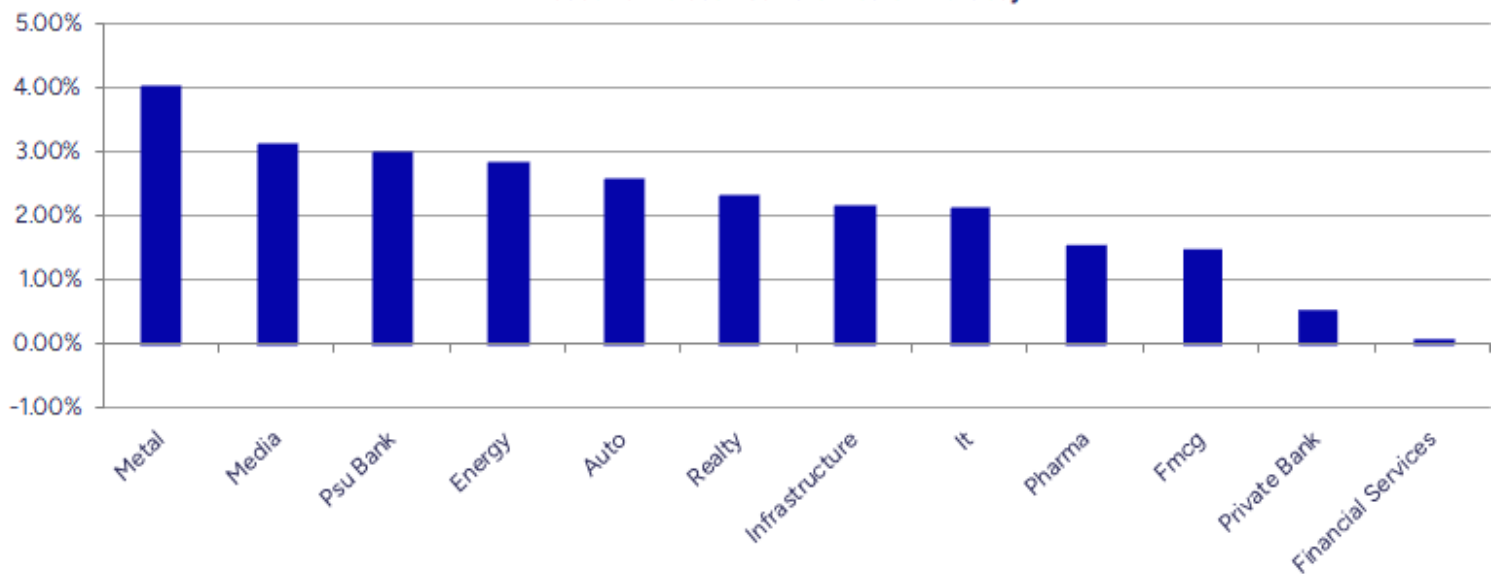
Company Name	LCP	Change %	200 DMA
Beta Drugs	1778	6.04	1676.8
Gabriel India	495.7	5.89	468.12
Hitachi Energy	13191.1	5.61	12489.89
Kanpur Plast	124.16	4.41	118.92
Manaksia Coated	79.41	4.13	76.26
Manorama Indust	923.6	3.97	888.34
Heads UP Vent	12.73	3.83	12.26
Yaari Digital	12.91	3.78	12.44
Deep Ind	448.2	3.23	434.19
Deepak Fert	1047.4	2.88	1018.08
Avonmore Cap	17.03	2.71	16.58
Mazagon	2246.7	2.68	2188.09
Guj Heavy Chem	636.25	2.57	620.32
Eicher Motors	4988.3	2.39	4871.98
Radico Khaitan	2105.15	2.34	2057
Persistent	5391.1	2.25	5272.42
Banaras Beads	117.6	2.00	115.29
Siyaram Silk	634.75	185.00%	623.22

* Stocks crossing above its Simple Moving Average (200DMA)

Breakdown - Cross below 200 DMA

Company Name	LCP	Change %	200 DMA
Anand Rathi	1895.7	-3.36	1961.52
Euro India Fres	176.51	-1.83	179.8
Raj Rayon Ind	22.34	-1.46	22.67
Sundaram Fin	4535.2	-0.30	4548.76
Ganesh Housing	1047.55	-0.01	1047.65

* Stocks crossing below its Simple Moving Average (200DMA)

Sectoral Indices - Gainers Losers for the day


Stocks witnessing a volume surge as compared to their 5 day average volur

Watch out for the stocks that have seen a huge spurt in its share price over the last three days

Volume Shockers - NSE					
Company name	LCP	% Chg	Volume	Avg Vol *	% Chg
Adani Green Ene	848.7	10.43	17901496	480592	3625
India Tourism D	576.55	13.22	1238920	40428	2965
Jindal Worldwid	64.35	-6.89	4000447	138074	2797
BEW Engineering	159.55	-0.22	30500	1125	2611
Redington	246.99	8.07	21228265	939548	2159
R M Drip & Spri	397.2	3.17	215500	9800	2099
Atal	11.71	3.08	2206001	100889	2087
A B Infrabuild	83.38	4.59	330322	15200	2073
Jindal Drilling	865.35	9.36	669696	34855	1821
Avanti Feeds	786.1	6.22	9432598	533245	1669
Narayana Hruda	1604.55	2.87	4513881	272555	1556
Maks Energy	28.15	4.84	85500	5700	1400
IIFL Finance	313.7	10.61	12897520	885727	1356
Oneclick Logi.	166.35	8.51	57600	4320	1233
Banswara Syntex	135.55	10.81	1215405	92228	1218
Zensar Tech	718.85	1	6314429	488188	1193
Lorenzini Appar	11.38	4.98	1041873	81805	1174
Cigniti Tech	1421.9	8.42	518538	41056	1163
Perfect Infra	10.65	4.93	663000	53400	1142
Taj GVK Hotels	485.85	0.85	1722074	149887	1049

* the Average Volume of last 5 days

Price Shockers - NSE				
Company name	LCP	3 days *	% Chg	Volume
Coffee Day	33.14	21.28	55.73	9290333
Lloyds Luxuries	90	70	28.57	6000
Guj Themis	272.63	218.91	24.54	140229
Vadilal Ind	4421.9	3586.3	23.3	43050
Man Industries	258.79	213.25	21.36	1443395
Nacl Industries	67.96	56.65	19.96	256222
Manaksia Alumin	22.88	19.19	19.23	247412
Country Club	15.97	13.42	19	53536
Anupam Rasayan	752.15	632.4	18.94	578958
India Tourism D	576.55	492.4	17.09	1238818
India Cements	296.2	253.4	16.89	2352799
Panacea Biotec	346.15	297.25	16.45	263934
Huhtamaki India	204.84	176.06	16.35	212570
MPS	2749.55	2364.9	16.26	91059
Sandur Manganes	449.35	386.9	16.14	531737
Sundaram	282.06	242.95	16.1	147416
Brooks Labs	113.75	98.1	15.95	105592
Dolphin Offshor	264.45	228.45	15.76	1361
Tera Software	193.6	167.25	15.75	52914
Swan Defence	67.57	58.39	15.72	164

* the % price rise of the last 3 days

Nifty 50 stocks - Summary Details											
Symbol	LTP	Chng	% Chng	Volume (lacs)	Turnover (crs.)	52w High	Diff with 52w H	52w Low	Diff with 52w L	365 days % chng	30 days % chng
NIFTY 50	22337.30	254.65	1.15%	3059.30	26370.67	26277.35	14.99%	21281.45	4.96%	-6.06%	-1.44%
ADANIEN	2242.00	97.20	4.53%	13.70	304.10	3743.90	40.12%	2025.00	10.72%	-6.25%	-35.34%
ADANIPTS	1112.45	54.50	5.15%	37.86	417.56	1621.40	31.39%	995.65	11.73%	-3.77%	-21.20%
APOLLOHOSP	6223.00	34.85	0.56%	3.46	214.19	7545.35	17.53%	5693.20	9.31%	-9.14%	2.57%
ASIANPAINT	2168.40	36.30	1.70%	15.35	331.30	3394.90	36.13%	2124.75	2.05%	-7.33%	-24.71%
AXISBANK	1014.15	12.35	1.23%	51.34	520.17	1339.65	24.30%	933.50	8.64%	1.59%	-9.48%
BAJAJ-AUTO	7438.05	104.75	1.43%	7.49	552.75	12774.00	41.77%	7301.00	1.88%	-17.12%	-10.65%
BAJAJFINSV	1805.90	15.60	0.87%	21.43	382.01	2029.90	11.04%	1419.05	27.26%	3.12%	10.56%
BAJFINANCE	8297.00	-288.95	-3.37%	16.30	1359.61	8739.00	5.06%	6187.80	34.09%	8.89%	30.04%
BEL	274.35	9.64	3.64%	284.94	772.28	340.50	19.43%	179.10	53.18%	-9.55%	26.29%
BHARTIARTL	1610.00	34.65	2.20%	62.95	1014.77	1779.00	9.50%	1132.00	42.23%	-3.13%	38.98%
BPCL	255.95	6.03	2.41%	78.02	198.93	376.00	31.93%	234.01	9.38%	-4.28%	-60.98%
BRITANNIA	4714.00	138.80	3.03%	3.51	164.49	6469.90	27.14%	4506.00	4.62%	-10.81%	-5.45%
CIPLA	1418.75	16.95	1.21%	21.88	310.41	1702.05	16.64%	1317.25	7.71%	-5.25%	-4.74%
COALINDIA	368.25	4.40	1.21%	57.30	210.06	543.55	32.25%	349.25	5.44%	-8.10%	-20.10%
DRREDDY	1125.75	5.60	0.50%	12.60	141.64	1421.49	20.80%	1103.90	1.98%	-7.98%	-82.32%
EICHERMOT	4990.60	175.50	3.64%	5.52	273.47	5575.50	10.49%	3672.00	35.91%	-7.30%	28.35%
GRASIM	2399.00	4.35	0.18%	7.55	180.36	2877.75	16.64%	2128.60	12.70%	-4.55%	7.18%
HCLTECH	1573.00	37.50	2.44%	31.12	488.47	2012.20	21.83%	1235.00	27.37%	-11.01%	-6.25%
HDFCBANK	1692.10	-17.90	-1.05%	107.92	1830.26	1880.00	9.99%	1421.25	19.06%	0.66%	19.36%
HDFCLIFE	618.15	1.65	0.27%	26.62	165.30	761.20	18.79%	511.40	20.87%	-3.38%	1.02%
HEROMOTOCO	3593.00	78.15	2.22%	6.12	219.14	6246.25	42.48%	3495.00	2.80%	-19.00%	-23.78%
HINDALCO	657.35	15.70	2.45%	78.77	516.43	772.65	14.92%	501.20	31.16%	7.97%	22.23%
HINDUNILVR	2175.00	17.65	0.82%	11.46	249.09	3035.00	28.34%	2136.00	1.83%	-12.62%	-10.93%
ICICIBANK	1215.00	4.60	0.38%	90.53	1101.48	1362.35	10.82%	1048.10	15.92%	-3.38%	10.81%
INDUSINDBK	973.00	-14.60	-1.48%	39.44	386.42	1576.35	38.28%	923.70	5.34%	-0.36%	-35.51%
INFY	1707.00	18.70	1.11%	81.81	1402.57	2006.45	14.92%	1358.35	25.67%	-10.19%	3.12%
ITC	409.20	14.35	3.63%	156.65	626.29	528.50	22.57%	391.20	4.60%	-11.77%	-3.48%
JSWSTEEL	1008.00	33.90	3.48%	24.71	245.89	1063.00	5.17%	761.75	32.33%	3.08%	18.17%
KOTAKBANK	1936.80	29.00	1.52%	38.12	737.61	1994.90	2.91%	1543.85	25.45%	0.34%	10.46%
LT	3243.00	30.00	0.93%	19.46	627.82	3963.50	18.18%	3141.00	3.25%	-9.93%	-11.84%
M&M	2721.35	108.00	4.13%	36.66	992.83	3270.95	16.80%	1788.80	52.13%	-12.59%	36.04%
MARUTI	11630.00	13.75	0.12%	3.50	408.61	13680.00	14.99%	10725.00	8.44%	-5.64%	0.19%
NESTLEIND	2199.00	52.50	2.45%	8.47	184.33	2778.00	20.84%	2110.00	4.22%	-7.21%	-17.09%
NTPC	326.10	12.35	3.94%	104.93	339.76	448.45	27.28%	292.80	11.37%	-3.16%	-11.33%
ONGC	229.60	2.84	1.25%	74.67	170.88	345.00	33.45%	215.48	6.55%	-13.65%	-18.78%
POWERGRID	264.80	10.80	4.25%	145.37	382.59	366.25	27.70%	247.30	7.08%	-15.80%	-13.80%
RELIANCE	1177.15	15.25	1.31%	86.64	1016.62	1608.80	26.83%	1156.00	1.83%	-8.16%	-61.46%
SBILIFE	1416.60	23.50	1.69%	11.18	157.64	1936.00	26.83%	1307.70	8.33%	-6.10%	-8.22%
SBIN	730.00	13.95	1.95%	104.09	755.32	912.00	19.96%	680.00	7.35%	-7.36%	-7.25%
SHRIRAMFIN	632.00	-0.90	-0.14%	95.32	601.75	730.45	13.48%	438.60	44.09%	16.40%	-74.13%
SUNPHARMA	1575.40	8.90	0.57%	24.28	382.60	1960.35	19.64%	1377.20	14.39%	-10.18%	0.93%
TATACONSUM	959.25	4.70	0.49%	27.73	266.17	1256.44	23.65%	882.90	8.65%	-6.84%	-20.67%
TATAMOTORS	641.60	22.40	3.62%	123.72	784.83	1179.00	45.58%	606.30	5.82%	-13.53%	-37.28%
TATASTEEL	145.68	6.34	4.55%	621.09	894.68	184.60	21.08%	122.62	18.81%	3.51%	-8.99%
TCS	3557.00	24.95	0.71%	25.02	891.07	4592.25	22.54%	3457.00	2.89%	-14.11%	-13.44%
TECHM	1538.95	50.70	3.41%	19.67	300.58	1807.70	14.87%	1162.95	32.33%	-11.12%	16.26%
TITAN	3092.15	43.65	1.43%	5.80	178.84	3867.00	20.04%	3017.00	2.49%	-12.66%	-18.32%
TRENT	5110.10	110.30	2.21%	21.28	1100.74	8345.00	38.76%	3750.25	36.26%	-13.10%	27.55%
ULTRACEMCO	10457.55	87.45	0.84%	3.11	323.39	12145.35	13.90%	9250.00	13.05%	-9.73%	3.93%
WIPRO	284.60	4.60	1.64%	102.85	292.60	324.60	12.32%	208.50	36.50%	-10.23%	-46.21%

Disclaimer / Disclosures

ANALYST CERTIFICATION

I, Mrs. Vaishali Parekh B.com, Research Analyst, author and the name subscribed to this report, hereby certify that all of the views expressed in this research report accurately reflect our views about the subject issuer(s) or securities. We also certify that no part of our compensation was, is, or will be directly or indirectly related to the specific recommendation(s) or view(s) in this report.

Terms & conditions and other disclosures:

Prabhudas Lilladher Pvt. Ltd, Mumbai, India (hereinafter referred to as "PL") is engaged in the business of Stock Broking, Portfolio Manager, Depository Participant and distribution for third party financial products. PL is a subsidiary of Prabhudas Lilladher Advisory Services Pvt Ltd. which has its various subsidiaries engaged in business of commodity broking, investment banking, financial services (margin funding) and distribution of third party financial/other products, details in respect of which are available at www.plindia.com

This document has been prepared by the Research Division of PL and is meant for use by the recipient only as information and is not for circulation. This document is not to be reported or copied or made available to others without prior permission of PL. It should not be considered or taken as an offer to sell or a solicitation to buy or sell any security.

The information contained in this report has been obtained from sources that are considered to be reliable. However, PL has not independently verified the accuracy or completeness of the same. Neither PL nor any of its affiliates, its directors or its employees accepts any responsibility of whatsoever nature for the information, statements and opinion given, made available or expressed herein or for any omission therein.

Recipients of this report should be aware that past performance is not necessarily a guide to future performance and value of investments can go down as well. The suitability or otherwise of any investments will depend upon the recipient's particular circumstances and, in case of doubt, advice should be sought from an independent expert/advisor.

Either PL or its affiliates or its directors or its employees or its representatives or its clients or their relatives may have position(s), make market, act as principal or engage in transactions of securities of companies referred to in this report and they may have used the research material prior to publication.

PL may from time to time solicit or perform investment banking or other services for any company mentioned in this document.

PL is registered as Research Analyst under Securities and Exchange Board of India (Research Analysts) Regulations, 2014 PL submits that no material disciplinary action has been taken on us by any Regulatory Authority impacting Equity Research Analysis activities.

PL or its research analysts or its associates or his relatives do not have any financial interest in the subject company.

PL or its research analysts or its associates or his relatives do not have actual/beneficial ownership of one per cent or more securities of the subject company at the end of the month immediately preceding the date of publication of the research report.

PL or its research analysts or its associates or his relatives do not have any material conflict of interest at the time of publication of the research report.

PL or its associates might have received compensation from the subject company in the past twelve months.

PL or its associates might have managed or co-managed public offering of securities for the subject company in the past twelve months or mandated by the subject company for any other assignment in the past twelve months.

PL or its associates might have received any compensation for investment banking or merchant banking or brokerage services from the subject company in the past twelve months.

PL or its associates might have received any compensation for products or services other than investment banking or merchant banking or brokerage services from the subject company in the past twelve months PL or its associates might have received any compensation or other benefits from the subject company or third party in connection with the research report.

PL encourages independence in research report preparation and strives to minimize conflict in preparation of research report. PL or its analysts did not receive any compensation or other benefits from the subject Company or third party in connection with the preparation of the research report. PL or its Research Analysts do not have any material conflict of interest at the time of publication of this report.

It is confirmed that Mrs.Vaishali Parekh B.com, Research Analyst of this report has not received any compensation from the companies mentioned in the report in the preceding twelve months compensation of our Research Analysts is not based on any specific merchant banking, investment banking or brokerage service transactions.

The Research analysts for this report certifies that all of the views expressed in this report accurately reflect his or her personal views about the subject company or companies and its or their securities, and no part of his or her compensation was, is or will be, directly or indirectly related to specific recommendations or views expressed in this report.

The research analysts for this report has not served as an officer, director or employee of the subject company PL or its research analysts have not engaged in market making activity for the subject company

Our sales people, traders, and other professionals or affiliates may provide oral or written market commentary or trading strategies to our clients that reflect opinions that are contrary to the opinions expressed herein, and our proprietary trading and investing businesses may make investment decisions that are inconsistent with the recommendations expressed herein. In reviewing these materials, you should be aware that any or all of the foregoing, among other things, may give rise to real or potential conflicts of interest.

PL and its associates, their directors and employees may (a) from time to time, have a long or short position in, and buy or sell the securities of the subject company or (b) be engaged in any other transaction involving such securities and earn brokerage or other compensation or act as a market maker in the financial instruments of the subject company or act as an advisor or lender/borrower to the subject company or may have any other potential conflict of interests with respect to any recommendation and other related information and opinions.