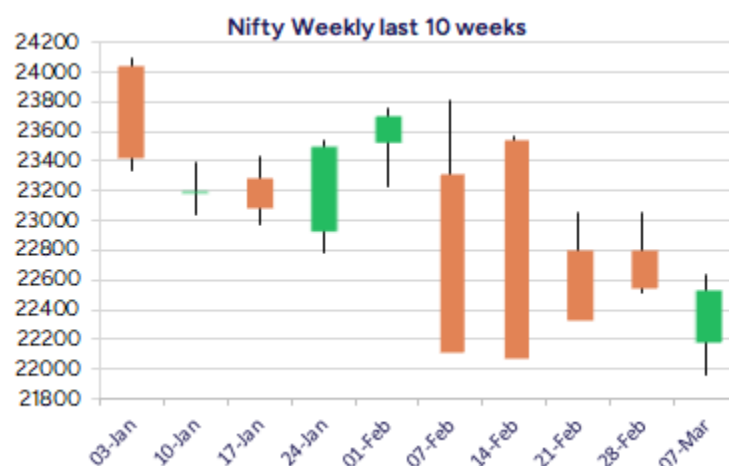
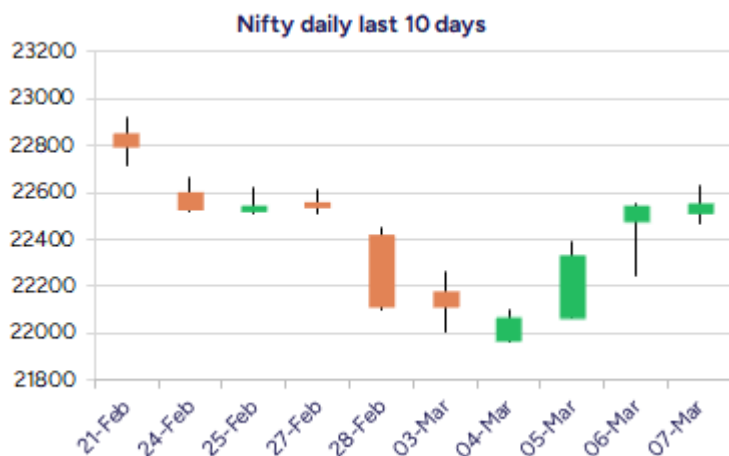


* Sensex 74332.58 -7.51

* Nifty 22552.50 +07.80

* Bank Nifty 48497.50 -130.20



*Blue candle → Close rate > Open rate * Red candle → Close rate < Open rate

Market Preview

Nifty sustains above the 22500 zone

Nifty witnessed highly volatile session maintaining above the 22500 zone with bias maintained with a cautiously positive approach. BankNifty continue to remain subdued and would need a decisive breach above 49500 zone to improve the bias. The market breadth was positive with the advance decline indicating a ratio of 2:1 at close.

Market Forecast

Nifty daily range 22400-22800

Nifty witnessed a volatile session finding resistance near the 22600 zone but maintained above the important 22500 level throughout the session with bias and sentiment maintained with a cautiously positive approach with further rise anticipated in the coming sessions. The index has the next near-term target of 22800 zone and a decisive breach above 23000 level shall establish some conviction for further rise ahead.

BankNifty continue to remain sluggish overall as compared to Nifty index with fluctuations witnessed and resisting near the 48700 zone during the intraday session. The index has maintained the strong support zone near 47900 level and on the upside, would need a decisive breach above 49500 levels to improve the bias and thereafter expect for further rise in the coming days.

The support for the day is seen at 22400 levels while the resistance is seen at 22800 levels. BankNifty would have the daily range of 48000-49000 levels.

Indices	Period	Closing	% Chng	Trend	Reversal	2 Sup	1 Sup	Pivot	1 Res	2 Res
Nifty	Daily	22552.50	0.03%	3	21984.05	22381	22467	22550	22636	22719
	Weekly	22552.50	1.93%	-4	22652.75	21714	22133	22384	22803	23053
	Monthly	23508.40	-0.58%	-5	26264.60	22068	22788	23507	24228	24947
Bank Nifty	Daily	48497.50	-0.27%	3	48312.45	48172	48335	48522	48685	48872
	Weekly	48497.50	0.32%	-4	48749.05	47395	47946	48393	48944	49390
	Monthly	49587.20	-2.50%	-5	52793.25	45873	47730	49701	51559	53530
Sensex	Daily	74332.58	-0.01%	3	72782.65	73771	74052	74319	74600	74867
	Weekly	74332.58	1.55%	-4	74891.60	71898	73115	73851	75068	75804
	Monthly	77500.57	-0.82%	-5	85764.50	72808	75154	77614	79960	82419

Daily Trend turned Up

Scrip Name	LCP	Curr Trnd	Reversal
BAJAJ AUTO	7574.75	-9	7520.8
BALKRISIND	2559.6	-5	2557.15
ICICIPRULI	549.55	-9	549.4
KOTMAHBNK	1935.4	-10	1928.05
NESTLEIND	2238.45	-5	2204
SUNTV	569.9	-1	565.7
TTKPRESTIG	626.45	-8	618.25
UBL	1922.3	-6	1918.95

Daily Trend turned Down

Scrip Name	LCP	Curr Trnd	Reversal
AUBANK	544.3	11	548.75
DIXON	13911.25	5	14024
FORTIS	629.5	7	634.25
FSL	353.3	2	354.1
IDFCFIRSTB	57.34	2	57.5
INFY	1686	2	1687.8
IPCALAB	1333.1	1	1352.9
PAGEIND	40067.15	2	40587.15

* Trends turned Up after a significant period

* Trends turned Down after a significant period

Gainers - Losers (Nifty 500 Stocks)

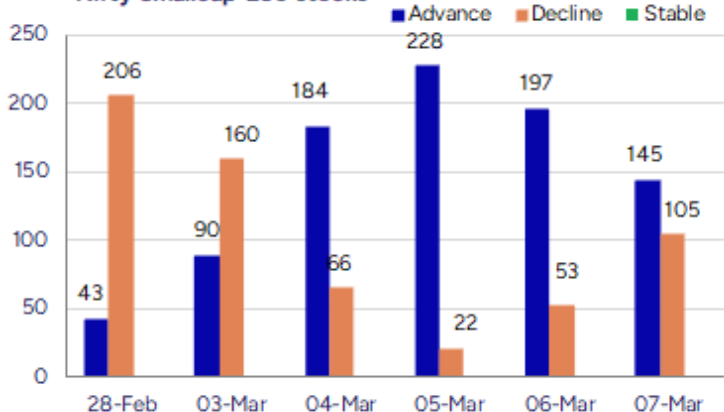
Gainers

Scrip Name	LCP	% Change	Volume
Banka Biolo	81.32	19.99	72990
Somi Conveyor	184.31	19.49	341446
Balaxi Pharma	70.93	18.45	305449
Arihant Academy	234.45	17.23	7200
Laxmi Dental	434	16.34	3011602
Compucom Soft	22.5	15.62	412770
Jubilant Agri	1356.95	15.19	16299

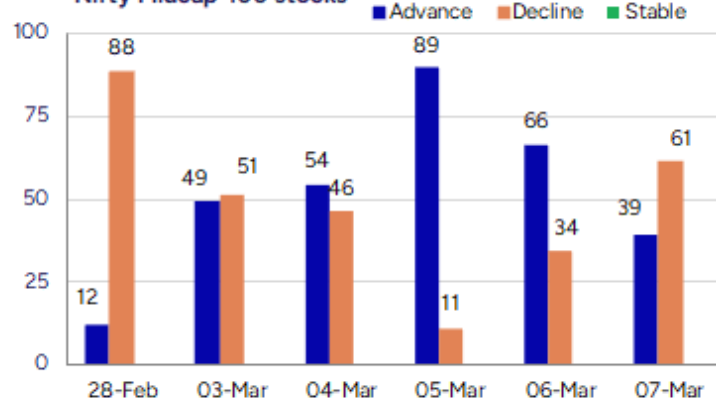
Losers

Scrip Name	LCP	% Change	Volume
D.K. Enterprise	64.25	-8.21	13500
MRO-TEK	68.07	-6.78	74216
S P Apparels	708.85	-6.48	46839
Excellent Wire	54	-5.76	4800
SecMark Consult	84.69	-5.64	5074
Beta Drugs	1716.1	-5.57	5600
WOL 3D India	106	-5.36	10000

Nifty Smallcap-250 stocks



Nifty Midcap-100 stocks



Nifty Daily chart with RSI indicator



BankNifty Daily chart with RSI indicator



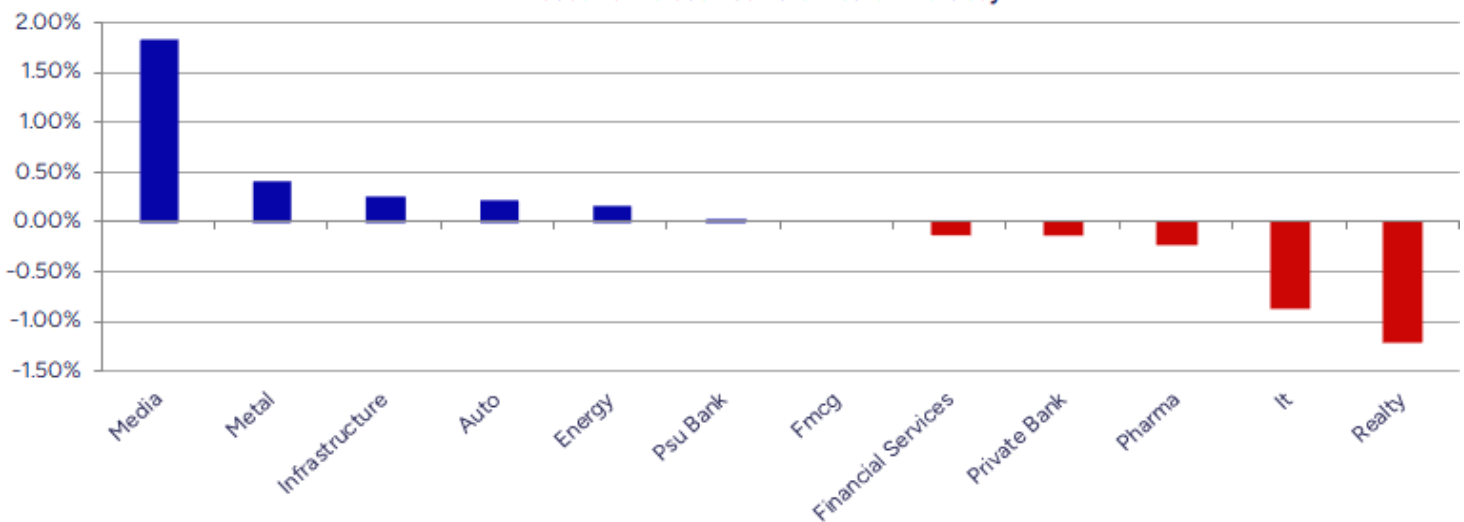
Breakouts - Cross above 200 DMA			
Company Name	LCP	Change %	200 DMA
Shyam Metalics	824.2	6.99	770.38
Somi Conveyor	184.31	6.40	173.22
Sah Polymers	93.27	5.70	88.24
Shree Karni Fab	720.25	4.68	688.02
Madhav Copper	44.44	3.52	42.93
PC Jeweller	12.63	3.52	12.2
Nila Spaces	12.37	3.26	11.98
Sudarshan Chem	1014.9	3.03	985.09
Abhishek	60.9	3.01	59.12
Kalyani Forge	576.35	2.99	559.61
Epigral	1866.9	2.80	1815.97
Mangalam Worldw	153	2.73	148.93
Aadhar Housing	426.7	2.40	416.68
FM	7660	2.24	7492.47
Crop Life Sci.	49.75	2.09	48.73
Time Techno	394.55	2.09	386.48
Super Spinning	11.03	1.85	10.83
Jubilant Ing.	686.15	146.00%	676.29

* Stocks crossing above its Simple Moving Average (200DMA)

Breakdown - Cross below 200 DMA			
Company Name	LCP	Change %	200 DMA
Emami Realty	101.21	-4.42	105.89
Neogen	1803.55	-2.33	1846.52
Krishna Institu	512.5	-1.71	521.42
Godfrey Phillip	5326.35	-0.98	5378.85
Zensar Tech	742.85	-0.98	750.22
Aster DM Health	417.45	-0.67	420.28
Medicamen Bio	481.35	-0.64	484.46
Soma Textile	40.11	-0.57	40.34
Dixon Technolog	13911.25	-0.37	13962.3
Kingfa Science	2924.2	-0.35	2934.4
Indo Tech Trans	2256.8	-0.24	2262.34
J. K. Cement	4421.55	-0.23	4431.94
Persistent	5278.8	-0.22	5290.68
Nandani Creatio	41.19	-0.12	41.24
Gallantt Ispat	336.05	-0.10	336.4

* Stocks crossing below its Simple Moving Average (200DMA)

Sectoral Indices - Gainers Losers for the day



Stocks witnessing a volume surge as compared to their 5 day average volur

Watch out for the stocks that have seen a huge spurt in its share price over the last three days

Volume Shockers - NSE					
Company name	LCP	% Chg	Volume	Avg Vol *	% Chg
Data Patterns	1628.25	14.58	106334	11515343	10729
Polysil Irrigat	16.3	4.82	22800	2042000	8856
Somi Conveyor	184.31	19.49	5503	341446	6104
BEW Engineering	150.25	-0.92	1125	61000	5322
Diamond Power	93.64	-0.11	6800	191824	2721
KPIL	931.2	1.54	272853	6805033	2394
Gensol Engineer	321.9	-3.85	294568	7027746	2286
Jai Balaji Ind	152.04	6.69	54390	1277099	2248
Jindal Drilling	897.65	5.2	34855	763839	2092
Precision	30.3	1.68	22000	462000	2000
Kamat Hotels	311.25	8.92	48751	1009450	1971
Triveni Turbine	613.5	14.51	1165130	20832425	1688
Khadim India	295.55	8.9	18435	313361	1600
Sun Pharma Adv	136.6	8.37	1599416	24708541	1445
Mahindra Logist	270.82	5.34	67500	939290	1292
Krishna Institu	512.5	-2.56	59456	803533	1251
Sikko Industrie	79.53	0.1	29809	382306	1183
A B Infrabuild	90.95	8.92	15200	194066	1177
Adani Green Ene	837.2	-1.03	480592	6077847	1165
Deccan Cements	880.4	3.76	15432	188605	1122

* the Average Volume of last 5 days

Price Shockers - NSE				
Company name	LCP	3 days *	% Chg	Volume
Capital Trust	104.5	69.51	50.34	654472
Lancor Holdings	28.19	20.56	37.11	536217
Somi Conveyor	176.72	129.32	36.65	164014
Bharat Wire Rop	175.68	132.5	32.59	464405
Shigan Quantum	83.3	63	32.22	15000
Banka Biolo	81.32	63.64	27.78	72112
Karma Energy	57.79	45.83	26.1	6568
Assoc Alcohol	1349.15	1076.1	25.37	155546
Century Extr	21.26	17.14	24.04	248425
Man Industries	266.5	215.66	23.57	379797
Jayaswal Neco	35.88	29.05	23.51	120470
Balaxi Pharma	69.25	56.12	23.4	146133
Triveni Turbine	592.6	486.85	21.72	12367109
Kirl Electric	143.31	118.1	21.35	666545
Ramky Infra	501.9	415.45	20.81	135180
Ind-Swift Labs	104.17	86.31	20.69	56340
Welspun Invest	779.4	646.5	20.56	22760
Kohinoor Foods	36.98	30.69	20.5	218569
Stanley Life	319.65	265.3	20.49	826071
Aptech	132.98	110.5	20.34	886045

* the % price rise of the last 3 days

Nifty 50 stocks - Summary Details											
Symbol	LTP	Chng	% Chng	Volume (lacs)	Turnover (crs.)	52w High	Diff with 52w H	52w Low	Diff with 52w L	365 days % chng	30 days % chng
NIFTY 50	22552.50	7.80	0.03%	2896.96	21442.01	26277.35	14.18%	21281.45	5.97%	-5.03%	0.31%
ADANIANT	2249.50	-3.35	-0.15%	8.19	184.00	3743.90	39.92%	2025.00	11.09%	-2.11%	-30.34%
ADANIPTS	1143.55	7.35	0.65%	22.11	253.87	1621.40	29.47%	995.65	14.85%	0.99%	-14.24%
APOLLOHOSP	6207.80	-66.30	-1.06%	2.99	187.38	7545.35	17.73%	5693.20	9.04%	-7.63%	3.63%
ASIANPAINT	2262.10	-5.60	-0.25%	9.21	208.68	3394.90	33.37%	2124.75	6.46%	-3.68%	-19.79%
AXISBANK	1038.00	3.90	0.38%	75.97	789.29	1339.65	22.52%	933.50	11.19%	1.85%	-8.08%
BAJAJ-AUTO	7551.00	88.75	1.19%	9.42	713.89	12774.00	40.89%	7301.00	3.42%	-16.26%	-13.29%
BAJAJFINSV	1839.00	-6.45	-0.35%	13.32	246.45	2029.90	9.40%	1419.05	29.59%	1.78%	18.71%
BAJFINANCE	8406.00	-4.85	-0.06%	4.73	398.16	8739.00	3.81%	6187.80	35.85%	-0.76%	33.27%
BEL	276.20	3.25	1.19%	255.20	708.26	340.50	18.88%	179.10	54.22%	-4.06%	29.70%
BHARTIARTL	1637.95	11.05	0.68%	30.36	494.46	1779.00	7.93%	1151.70	42.22%	-2.08%	36.29%
BPCL	260.49	-4.55	-1.72%	70.56	184.95	376.00	30.72%	234.01	11.32%	3.55%	-58.48%
BRITANNIA	4752.70	50.15	1.07%	1.92	90.76	6469.90	26.54%	4506.00	5.47%	-6.48%	-3.65%
CIPLA	1459.00	-2.75	-0.19%	6.78	99.02	1702.05	14.28%	1317.25	10.76%	0.88%	-1.58%
COALINDIA	380.90	-1.70	-0.44%	83.15	319.07	543.55	29.92%	349.25	9.06%	1.61%	-17.11%
DRREDDY	1133.20	-6.90	-0.61%	7.90	89.89	1421.49	20.28%	1103.90	2.65%	-6.55%	-81.95%
EICHERMOT	5130.00	35.60	0.70%	5.91	301.63	5575.50	7.99%	3672.00	39.71%	-6.53%	34.30%
GRASIM	2405.00	11.35	0.47%	3.17	76.33	2877.75	16.43%	2128.60	12.99%	-3.66%	7.03%
HCLTECH	1558.60	-26.85	-1.69%	20.92	327.20	2012.20	22.54%	1235.00	26.20%	-8.49%	-3.57%
HDFCBANK	1688.00	-3.20	-0.19%	66.83	1129.84	1880.00	10.21%	1421.25	18.77%	-1.73%	17.23%
HDFCLIFE	625.30	7.05	1.14%	31.69	198.80	761.20	17.85%	511.40	22.27%	-1.22%	0.70%
HEROMOTOCO	3653.90	5.15	0.14%	6.22	228.99	6246.25	41.50%	3495.00	4.55%	-13.89%	-21.28%
HINDALCO	689.95	8.00	1.17%	81.42	560.46	772.65	10.70%	501.20	37.66%	16.78%	29.41%
HINDUNILVR	2207.95	-11.00	-0.50%	17.37	382.62	3035.00	27.25%	2136.00	3.37%	-8.99%	-7.57%
ICICIBANK	1213.40	-4.65	-0.38%	66.20	803.43	1362.35	10.93%	1048.10	15.77%	-3.95%	11.02%
INDUSINDBK	935.00	-36.70	-3.78%	77.30	729.62	1576.35	40.69%	923.70	1.22%	-7.21%	-37.49%
INFY	1685.00	-30.85	-1.80%	80.19	1352.21	2006.45	16.02%	1358.35	24.05%	-9.64%	6.08%
ITC	403.75	-1.95	-0.48%	111.78	451.20	528.50	23.60%	391.20	3.21%	-10.86%	-0.53%
JSWSTEEL	1008.35	-2.75	-0.27%	7.60	77.01	1063.00	5.14%	761.75	32.37%	7.08%	24.38%
KOTAKBANK	1932.00	10.30	0.54%	27.80	535.61	1994.90	3.15%	1543.85	25.14%	-0.35%	9.20%
LT	3246.00	-13.90	-0.43%	9.30	302.80	3963.50	18.10%	3141.00	3.34%	-5.21%	-10.50%
M&M	2728.10	-14.30	-0.52%	18.87	515.88	3270.95	16.60%	1788.80	52.51%	-14.01%	39.16%
MARUTI	11667.80	1.40	0.01%	2.59	301.82	13680.00	14.71%	10725.00	8.79%	-11.01%	0.86%
NESTLEIND	2221.70	20.50	0.93%	5.25	117.23	2778.00	20.03%	2110.00	5.29%	-4.27%	-13.10%
NTPC	330.40	-7.50	-2.22%	89.90	298.15	448.45	26.32%	292.80	12.84%	5.89%	-3.99%
ONGC	232.40	-0.20	-0.09%	90.78	211.86	345.00	32.64%	215.48	7.85%	-8.46%	-17.00%
POWERGRID	263.40	-3.25	-1.22%	100.41	264.93	366.25	28.08%	247.30	6.51%	-6.65%	-9.21%
RELIANCE	1246.40	36.80	3.04%	164.71	2048.93	1608.80	22.53%	1156.00	7.82%	-5.88%	-59.76%
SBILIFE	1412.00	-6.60	-0.47%	9.01	127.98	1936.00	27.07%	1307.70	7.98%	-3.47%	-6.52%
SBIN	731.95	-0.10	-0.01%	72.46	530.19	912.00	19.74%	680.00	7.64%	-6.05%	-6.61%
SHRIRAMFIN	631.00	-13.35	-2.07%	58.29	369.54	730.45	13.61%	438.60	43.87%	11.72%	-72.86%
SUNPHARMA	1607.00	-7.00	-0.43%	9.81	158.16	1960.35	18.02%	1377.20	16.69%	-8.57%	0.62%
TATACONSUM	963.90	5.75	0.60%	9.46	90.93	1256.44	23.28%	882.90	9.17%	-7.35%	-21.47%
TATAMOTORS	647.50	7.85	1.23%	101.22	654.73	1179.00	45.08%	606.30	6.80%	-9.98%	-37.14%
TATASTEEL	151.50	1.06	0.70%	818.16	1240.00	184.60	17.93%	122.62	23.55%	12.76%	-0.77%
TCS	3602.00	0.40	0.01%	20.51	739.47	4592.25	21.56%	3457.00	4.19%	-12.31%	-11.38%
TECHM	1492.00	-11.45	-0.76%	8.93	133.21	1807.70	17.46%	1162.95	28.29%	-9.38%	18.29%
TITAN	3080.00	-41.10	-1.32%	10.20	315.41	3867.00	20.35%	3017.00	2.09%	-13.25%	-18.10%
TRENT	4990.00	-79.50	-1.57%	6.90	347.18	8345.00	40.20%	3750.25	33.06%	-11.84%	30.93%
ULTRACEMCO	10560.05	66.55	0.63%	3.02	319.61	12145.35	13.05%	9250.00	14.16%	-8.90%	8.84%
WIPRO	284.40	-1.50	-0.52%	80.95	230.93	324.60	12.38%	208.50	36.40%	-9.60%	-44.29%

Disclaimer / Disclosures

ANALYST CERTIFICATION

I, Mrs. Vaishali Parekh B.com, Research Analyst, author and the name subscribed to this report, hereby certify that all of the views expressed in this research report accurately reflect our views about the subject issuer(s) or securities. We also certify that no part of our compensation was, is, or will be directly or indirectly related to the specific recommendation(s) or view(s) in this report.

Terms & conditions and other disclosures:

Prabhudas Lilladher Pvt. Ltd, Mumbai, India (hereinafter referred to as "PL") is engaged in the business of Stock Broking, Portfolio Manager, Depository Participant and distribution for third party financial products. PL is a subsidiary of Prabhudas Lilladher Advisory Services Pvt Ltd. which has its various subsidiaries engaged in business of commodity broking, investment banking, financial services (margin funding) and distribution of third party financial/other products, details in respect of which are available at www.plindia.com

This document has been prepared by the Research Division of PL and is meant for use by the recipient only as information and is not for circulation. This document is not to be reported or copied or made available to others without prior permission of PL. It should not be considered or taken as an offer to sell or a solicitation to buy or sell any security.

The information contained in this report has been obtained from sources that are considered to be reliable. However, PL has not independently verified the accuracy or completeness of the same. Neither PL nor any of its affiliates, its directors or its employees accepts any responsibility of whatsoever nature for the information, statements and opinion given, made available or expressed herein or for any omission therein.

Recipients of this report should be aware that past performance is not necessarily a guide to future performance and value of investments can go down as well. The suitability or otherwise of any investments will depend upon the recipient's particular circumstances and, in case of doubt, advice should be sought from an independent expert/advisor.

Either PL or its affiliates or its directors or its employees or its representatives or its clients or their relatives may have position(s), make market, act as principal or engage in transactions of securities of companies referred to in this report and they may have used the research material prior to publication.

PL may from time to time solicit or perform investment banking or other services for any company mentioned in this document.

PL is registered as Research Analyst under Securities and Exchange Board of India (Research Analysts) Regulations, 2014 PL submits that no material disciplinary action has been taken on us by any Regulatory Authority impacting Equity Research Analysis activities.

PL or its research analysts or its associates or his relatives do not have any financial interest in the subject company.

PL or its research analysts or its associates or his relatives do not have actual/beneficial ownership of one per cent or more securities of the subject company at the end of the month immediately preceding the date of publication of the research report.

PL or its research analysts or its associates or his relatives do not have any material conflict of interest at the time of publication of the research report.

PL or its associates might have received compensation from the subject company in the past twelve months.

PL or its associates might have managed or co-managed public offering of securities for the subject company in the past twelve months or mandated by the subject company for any other assignment in the past twelve months.

PL or its associates might have received any compensation for investment banking or merchant banking or brokerage services from the subject company in the past twelve months.

PL or its associates might have received any compensation for products or services other than investment banking or merchant banking or brokerage services from the subject company in the past twelve months PL or its associates might have received any compensation or other benefits from the subject company or third party in connection with the research report.

PL encourages independence in research report preparation and strives to minimize conflict in preparation of research report. PL or its analysts did not receive any compensation or other benefits from the subject Company or third party in connection with the preparation of the research report. PL or its Research Analysts do not have any material conflict of interest at the time of publication of this report.

It is confirmed that Mrs.Vaishali Parekh B.com, Research Analyst of this report has not received any compensation from the companies mentioned in the report in the preceding twelve months compensation of our Research Analysts is not based on any specific merchant banking, investment banking or brokerage service transactions.

The Research analysts for this report certifies that all of the views expressed in this report accurately reflect his or her personal views about the subject company or companies and its or their securities, and no part of his or her compensation was, is or will be, directly or indirectly related to specific recommendations or views expressed in this report.

The research analysts for this report has not served as an officer, director or employee of the subject company PL or its research analysts have not engaged in market making activity for the subject company

Our sales people, traders, and other professionals or affiliates may provide oral or written market commentary or trading strategies to our clients that reflect opinions that are contrary to the opinions expressed herein, and our proprietary trading and investing businesses may make investment decisions that are inconsistent with the recommendations expressed herein. In reviewing these materials, you should be aware that any or all of the foregoing, among other things, may give rise to real or potential conflicts of interest.

PL and its associates, their directors and employees may (a) from time to time, have a long or short position in, and buy or sell the securities of the subject company or (b) be engaged in any other transaction involving such securities and earn brokerage or other compensation or act as a market maker in the financial instruments of the subject company or act as an advisor or lender/borrower to the subject company or may have any other potential conflict of interests with respect to any recommendation and other related information and opinions.