

* Sensex 74102.32 -12.85

* Nifty 22497.90 +37.60

* Bank Nifty 47853.95 -362.85

Market Preview

Nifty witnesses significant recovery; ends in green

Nifty amid weak global cues recovered significantly after a poor start to the session and closed near the 22500 zone with bias overall maintained with a cautiously positive approach. BankNifty managed to sustain the 47800 zone and would need to bounce back to maintain the bias intact. The market breadth was overall flat with a neutral advance decline ratio at close.

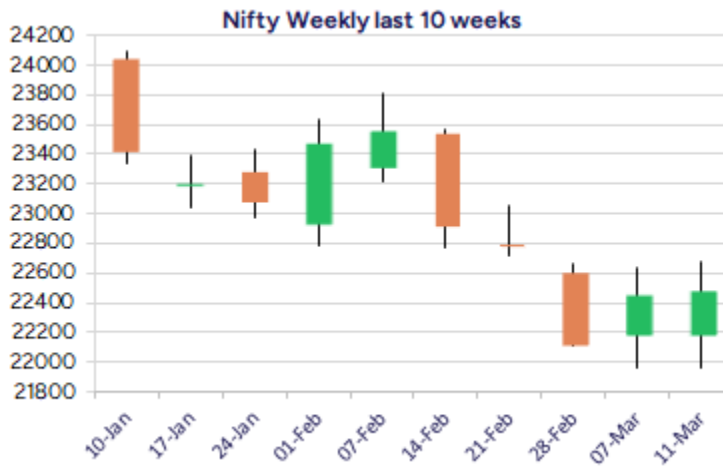
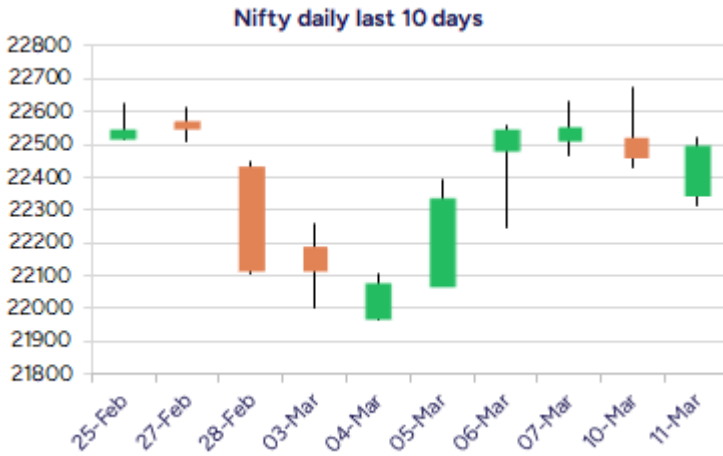
Market Forecast

Nifty daily range 22300-22700

Nifty after opening on a weak note recovered significantly with participation from the broader markets as well to end near the 22500 zone with sentiment slightly easing out and can anticipate for further rise till 22800 levels in the coming sessions. The index would have the crucial and important support zone of 22000 level as of now which needs to be sustained and on the upside, as mentioned earlier, only a decisive breach above 23000 level shall establish conviction to expect for further rise ahead.

BankNifty, on the back of Indusind Bank carnage, lost momentum losing 360 points but managed to sustain above the important and crucial support zone near 47800 levels with hopes remaining alive for recovery in the coming sessions. The index, as mentioned earlier, would need a decisive breach above the 50EMA zone of 49500 levels to improve the bias and thereafter expect for further rise in the coming days. Individual banking stocks like ICICI Bank, HDFC Bank, Axis Bank and Kotak Bank have still maintained their positive bias and can expect for further upward move in the coming days.

The support for the day is seen at 22300 levels while the resistance is seen at 22700 levels. BankNifty would have the daily range of 47500-48400 levels.



*Blue candle → Close rate > Open rate * Red candle → Close rate < Open rate

Indices	Period	Closing	% Chng	Trend	Reversal	2 Sup	1 Sup	Pivot	1 Res	2 Res
Nifty	Daily	22497.90	0.17%	5	22232.15	22238	22368	22445	22575	22652
	Weekly	22552.50	1.93%	-4	22652.75	21714	22133	22384	22803	23053
	Monthly	23508.40	-0.58%	-5	26264.60	22068	22788	23507	24228	24947
Bank Nifty	Daily	47853.95	-0.75%	-2	48086.25	47536	47695	47862	48021	48188
	Weekly	48497.50	0.32%	-4	48749.05	47395	47946	48393	48944	49390
	Monthly	49587.20	-2.50%	-5	52793.25	45873	47730	49701	51559	53530
Sensex	Daily	74102.32	-0.02%	5	73482.35	73456	73779	73987	74310	74519
	Weekly	74332.58	1.55%	-4	74891.60	71898	73115	73851	75068	75804
	Monthly	77500.57	-0.82%	-5	85764.50	72808	75154	77614	79960	82419

Daily Trend turned Up

Scrip Name	LCP	Curr Trnd	Reversal
CASTROLIND	241.37	-1	237.7
GODREJPROP	2046.1	-1	1992.15
JUBLFOOD	613	-10	605.5
KOTMAHBNK	1935.2	-1	1920.7
MARUTI	11646.95	-20	11618.65
MCX	4686.4	-9	4565.1
NAUKRI	6697.1	-7	6679.75
PETRONET	285.35	-1	280.6
STAR	626.8	-1	607.7
TATACONSUM	959.85	-13	955.25
TITAN	3046.4	-1	3032.65
TVSMOTOR	2288.85	-1	2278.25

* Trends turned Up after a significant period

Daily Trend turned Down

Scrip Name	LCP	Curr Trnd	Reversal
ABB	5129.3	6	5160.4
BANDHANBNK	140.11	12	147.05
CUB	146.4	6	149.25
ESCORTS	2890.2	6	2941.3
HEIDELBERG	193.88	5	196.05
HSCL	406.25	4	412.1
IBULHSGFIN	110.13	5	110.45
INDIAMART	1946.05	4	1967.05
KEC	676.7	4	692.35
LUPINLTD	1976.1	6	1981.5
RBLBANK	155.68	4	159.15
REPCOHOME	317.4	4	322.55

* Trends turned Down after a significant period

Gainers - Losers (Nifty 500 Stocks)

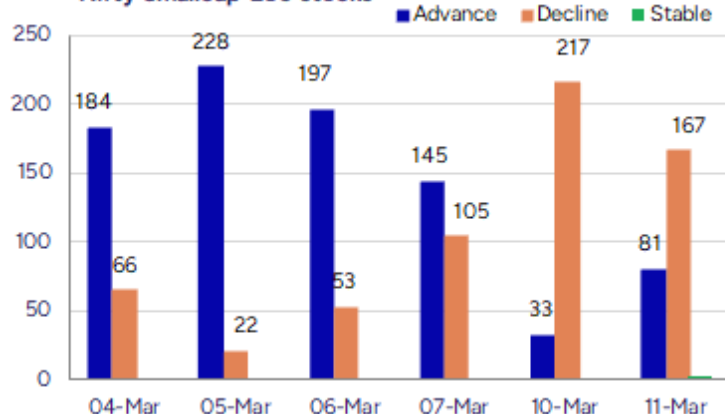
Gainers

Scrip Name	LCP	% Change	Volume
Italian Edibles	36.5	17.17	22000
Indegene	577.55	14.22	6739987
OCCL	77.64	12.65	1119984
Thangamayil	1854.85	12.47	484351
SAR Televenture	219.35	12.29	308500
Transindia Real	31.12	11.06	1659181
Kolte-Patil	317.4	11.02	2459035

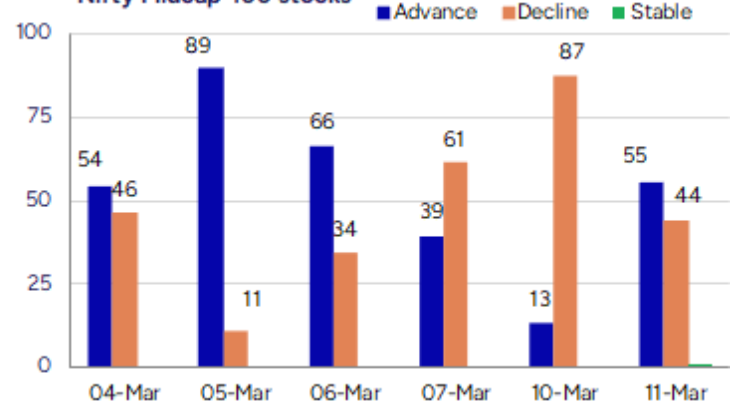
Losers

Scrip Name	LCP	% Change	Volume
IndusInd Bank	655.95	-27.16	101040005
P S Raj Steels	131	-12.61	12000
Vdeal System	111.95	-12.2	55200
Shree Tirupati	859.6	-9.89	6000
Hercules Hoists	141.11	-9.44	100408
Dhariwalcorp	91.25	-9.2	10800
Precision Metal	27.2	-9.18	396000

Nifty Smallcap-250 stocks



Nifty Midcap-100 stocks



Nifty Daily chart with RSI indicator



BankNifty Daily chart with RSI indicator



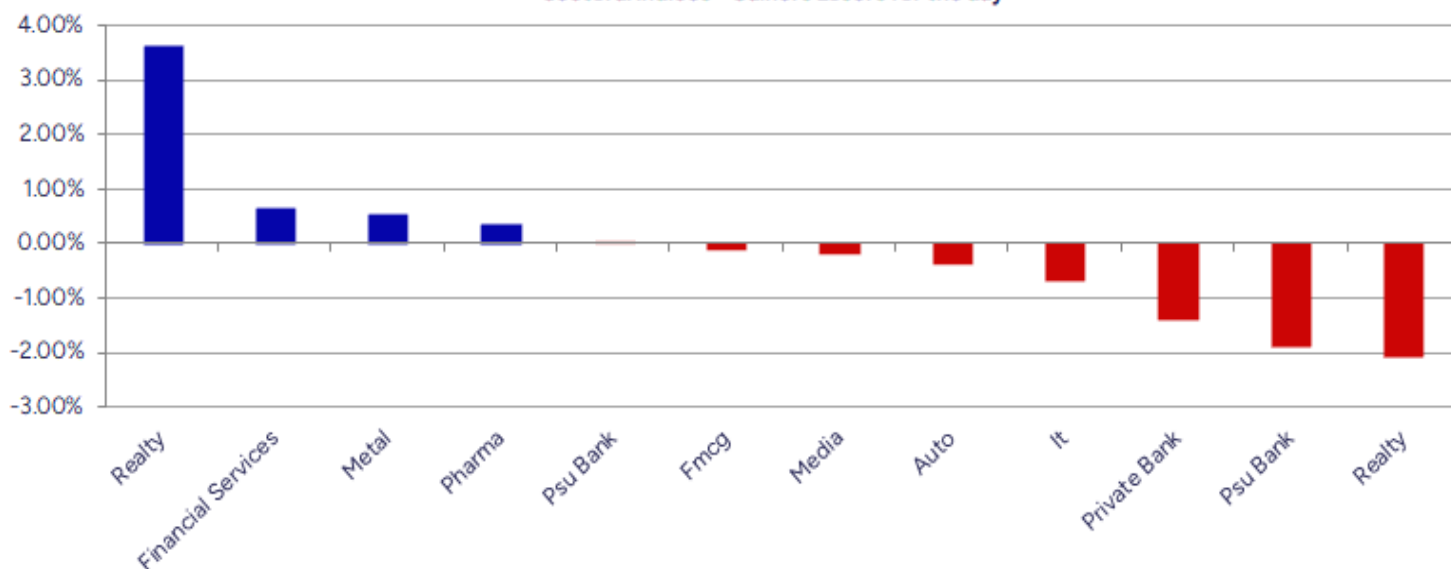
Breakouts - Cross above 200 DMA			
Company Name	LCP	Change %	200 DMA
One 97 Comm	713.35	4.72	681.22
Giriraj Civil D	267.75	3.92	257.65
ICICI Securitie	830.35	1.49	818.16
Heads UP Vent	12.4	1.31	12.24
Ndr Auto Compon	678.2	1.05	671.17
Krishna Institu	526.95	0.80	522.77
ICICI Bank	1245.4	0.63	1237.64
Max Healthcare	983.3	0.34	979.95
Unihealth Hospi	141.3	0.31	140.87
Nazara	934.15	0.13	932.96
ABSLLIQUID	1000.01	0.00	1000

Breakdown - Cross below 200 DMA			
Company Name	LCP	Change %	200 DMA
BSE Limited	3809.75	-4.60	3993.45
Alivus Life	984.7	-3.68	1022.37
Hitachi Energy	12169.6	-2.91	12534.58
Kalyani Forge	544.75	-2.88	560.91
FM	7268.75	-2.87	7483.15
Mangalore Chem	137.52	-2.02	140.36
Tirupati Forge	37.81	-1.77	38.49
Kitex Garments	158.87	-1.24	160.87
Silgo Retail	37.89	-0.92	38.24
Godrej Agrovvet	736.1	-0.82	742.21
Ramdevbaba Solv	111.1	-0.80	112
SBFC Finance	85.05	-0.65	85.61
Hisar Metal	191.93	-0.61	193.1
ANI Integrated	128.9	-0.17	129.12
Swaraj Engines	3005.15	-0.16	3010.01
Patanjali Foods	1744.25	-0.11	1746.11

* Stocks crossing above its Simple Moving Average (200DMA)

* Stocks crossing below its Simple Moving Average (200DMA)

Sectoral Indices - Gainers Losers for the day



Stocks witnessing a volume surge as compared to their 5 day average volume

Watch out for the stocks that have seen a huge spurt in its share price over the last three days

Volume Shockers - NSE					
Company name	LCP	% Chg	Volume	Avg Vol *	% Chg
Diamond Power	92.14	0.26	1568551	6800	22966
HEG	399.6	3.04	7022847	80062	8672
G-Tec Jainx	32.95	3.45	135247	2151	6187
Chennai Petro	551.5	7.49	22934250	588532	3797
IndusInd Bank	655.95	-27.16	101051683	3162162	3096
Jindal Drilling	944.75	9.45	1086255	34855	3017
BEW Engineering	147.35	-1.5	30000	1125	2567
Centum Electron	1250.85	3.82	378093	14212	2560
Sapphire Foods	323.05	-1.03	1810753	68650	2538
Data Patterns	1582.05	-3	2372347	106334	2131
AstraZeneca	7807.35	2.38	148293	7428	1897
Tube Investment	2882.05	6.17	2398641	130639	1736
Precision	27.2	-9.18	396000	22000	1700
Ushanti Colour	67	4.04	40000	2800	1329
Taj GVK Hotels	500.95	4.59	2048820	149887	1267
Tata Comm	1492.35	8.68	4316737	317273	1261
Praxis Home Ret	13.13	-3.6	826536	62438	1224
Indegene	577.55	14.22	6740075	550626	1124
Career Point	355.2	2.5	264470	22537	1074
Jai Balaji Ind	140.56	-4	628777	54390	1056

* the Average Volume of last 5 days

Price Shockers - NSE				
Company name	LCP	3 days *	% Chg	Volume
Divine Power	123	102	20.59	85500
Nitiraj Enginee	401.55	333.1	20.55	300829
Bodal Chemicals	65.85	56.82	15.89	2017470
ICE Make Refrig	845.3	733.6	15.23	155604
Kolte-Patil	317.4	276.1	14.96	2459046
Lloyds Luxuries	95.9	84.5	13.49	1000
Ushanti Colour	67	59.5	12.61	40000
Arkade Develop	160.34	143.09	12.06	2326439
Sarda Energy	527.45	471.05	11.97	4226649
Sarda Energy	527.45	471.05	11.97	4226649
Welspun Invest	786.55	704.4	11.66	16411
Banka Biolo	90.62	81.32	11.44	50185
Stallion India	80.19	72.31	10.9	1869364
ARSS Infra	32.81	29.77	10.21	18484
Lorenzini Appar	13.51	12.26	10.2	91742
Sumit Woods	98.19	89.15	10.14	102803
Polysil Irrigat	17.95	16.3	10.12	6000

* the % price rise of the last 3 days

Nifty 50 stocks - Summary Details											
Symbol	LTP	Chng	% Chng	Volume (lacs)	Turnover (crs.)	52w High	Diff with 52w H	52w Low	Diff with 52w L	365 days % chng	30 days % chng
NIFTY 50	22497.90	37.60	0.17%	347922	29208.02	26277.35	14.38%	21281.45	5.72%	-4.67%	-0.15%
ADANIEN	2252.65	24.35	1.09%	9.47	213.21	3743.90	39.83%	2025.00	11.24%	-4.72%	-30.94%
ADANIPTS	1133.90	-9.00	-0.79%	23.99	273.14	1621.40	30.07%	995.65	13.89%	-0.28%	-13.77%
APOLLOHOSP	6134.10	-15.50	-0.25%	5.27	320.49	7545.35	18.70%	5693.20	7.74%	-9.44%	1.67%
ASIANPAINT	2286.00	7.40	0.32%	6.01	137.18	3394.90	32.66%	2124.75	7.59%	0.33%	-20.62%
AXISBANK	1026.00	-9.85	-0.95%	47.71	490.23	1339.65	23.41%	933.50	9.91%	1.15%	-6.80%
BAJAJ-AUTO	7509.85	126.45	1.71%	4.13	307.39	12774.00	41.21%	7301.00	2.86%	-17.87%	-16.84%
BAJAJFINSV	1808.20	-32.15	-1.75%	22.99	415.31	2029.90	10.92%	1419.05	27.42%	2.34%	16.27%
BAJFINANCE	8344.90	2.30	0.03%	8.14	675.65	8739.00	4.51%	6297.80	32.51%	-1.55%	29.93%
BEL	277.58	6.75	2.49%	209.80	576.72	340.50	18.48%	179.10	54.99%	-1.70%	26.55%
BHARTIARTL	1664.00	33.05	2.03%	60.79	1006.53	1779.00	6.46%	1151.70	44.48%	-2.73%	35.95%
BPCL	264.70	7.77	3.02%	123.07	322.14	376.00	29.60%	234.01	13.11%	-2.79%	-58.87%
BRITANNIA	4764.00	26.30	0.56%	1.47	70.25	6469.90	26.37%	4506.00	5.73%	-2.73%	-3.10%
CIPLA	1448.50	-14.25	-0.97%	12.31	178.30	1702.05	14.90%	1317.25	9.96%	-0.65%	-1.38%
COALINDIA	378.60	3.45	0.92%	53.41	200.39	543.55	30.35%	349.25	8.40%	-0.82%	-18.20%
DRREDDY	1117.40	-2.80	-0.25%	8.84	98.98	1421.49	21.39%	1103.90	1.22%	-9.69%	-82.29%
EICHERMOT	5005.00	14.45	0.29%	2.28	113.47	5575.50	10.23%	3672.00	36.30%	-7.11%	31.84%
GRASIM	2415.90	31.95	1.34%	4.45	106.92	2877.75	16.05%	2128.60	13.50%	-4.17%	6.99%
HCLTECH	1567.00	17.70	1.14%	18.46	286.75	2012.20	22.13%	1235.00	26.88%	-10.22%	-5.39%
HDFCBANK	1687.90	0.40	0.02%	99.49	1677.09	1880.00	10.22%	1421.25	18.76%	-2.61%	16.69%
HDFCLIFE	636.25	10.35	1.65%	26.77	169.02	761.20	16.41%	511.40	24.41%	-1.54%	0.64%
HEROMOTOCO	3651.00	68.15	1.90%	6.19	223.87	6246.25	41.55%	3495.00	4.46%	-16.18%	-23.00%
HINDALCO	699.00	9.85	1.43%	52.62	363.06	772.65	9.53%	501.20	39.47%	13.46%	28.41%
HINDUNILVR	2220.00	-27.75	-1.23%	13.26	296.64	3035.00	26.85%	2136.00	3.93%	-4.91%	-7.10%
ICICIBANK	1244.15	29.30	2.41%	109.28	1353.75	1362.35	8.68%	1048.10	18.71%	-3.35%	11.66%
INDUSINDBK	656.80	-243.70	-27.06%	1010.75	6986.52	1576.35	58.33%	649.00	1.20%	-16.55%	-42.41%
INFY	1667.00	-34.45	-2.02%	126.71	2097.18	2006.45	16.92%	1358.35	22.72%	-10.62%	5.26%
ITC	406.20	1.20	0.30%	110.99	451.27	528.50	23.14%	391.20	3.83%	-6.00%	-2.07%
JSWSTEEL	1018.75	5.25	0.52%	15.96	161.93	1063.00	4.16%	761.75	33.74%	3.34%	22.11%
KOTAKBANK	1936.70	14.95	0.78%	32.07	617.74	1994.90	2.92%	1543.85	25.45%	-0.39%	9.94%
LT	3203.80	26.10	0.82%	12.75	405.89	3963.50	19.17%	3141.00	2.00%	-4.77%	-13.58%
M&M	2657.85	-44.75	-1.66%	36.16	957.62	3270.95	18.74%	1788.80	48.58%	-15.50%	42.43%
MARUTI	11660.00	73.95	0.64%	2.46	285.25	13680.00	14.77%	10725.00	8.72%	-11.21%	0.66%
NESTLEIND	2250.25	1.85	0.08%	4.79	107.95	2778.00	19.00%	2110.00	6.65%	1.05%	-12.20%
NTPC	331.50	2.10	0.64%	102.99	339.16	448.45	26.08%	292.80	13.22%	3.93%	-6.47%
ONGC	226.25	3.06	1.37%	109.42	245.40	345.00	34.42%	215.48	5.00%	-10.33%	-19.74%
POWERGRID	267.65	-3.65	-1.35%	92.55	248.05	366.25	26.92%	247.30	8.23%	-2.46%	-7.30%
RELIANCE	1247.25	8.85	0.71%	100.90	1252.86	1608.80	22.47%	1156.00	7.89%	-2.23%	-58.13%
SBILIFE	1417.55	-1.90	-0.13%	6.92	98.02	1936.00	26.78%	1307.70	8.40%	-3.50%	-6.02%
SBIN	729.90	1.00	0.14%	55.39	403.96	912.00	19.97%	680.00	7.34%	-1.13%	-7.51%
SHRIRAMFIN	639.10	13.50	2.16%	67.35	424.12	730.45	12.51%	438.60	45.71%	11.80%	-74.46%
SUNPHARMA	1657.00	45.50	2.82%	33.25	548.73	1960.35	15.47%	1377.20	20.32%	-7.90%	0.36%
TATACONSUM	960.00	2.70	0.28%	27.49	261.92	1256.44	23.59%	882.90	8.73%	-6.26%	-24.12%
TATAMOTORS	648.90	0.75	0.12%	95.35	616.56	1179.00	44.96%	606.30	7.03%	-8.29%	-37.64%
TATASTEEL	150.83	-0.22	-0.15%	359.15	540.73	184.60	18.29%	122.62	23.01%	9.21%	-3.94%
TCS	3585.00	-4.65	-0.13%	19.95	711.96	4592.25	21.93%	3457.00	3.70%	-10.91%	-12.63%
TECHM	1485.65	-1.20	-0.08%	17.69	259.42	1807.70	17.82%	1162.95	27.75%	-12.13%	15.43%
TITAN	3053.90	27.10	0.90%	5.76	175.19	3867.00	21.03%	3010.00	1.46%	-11.62%	-20.07%
TRENT	4998.00	198.30	4.13%	14.38	707.99	8345.00	40.11%	3843.00	30.05%	-12.00%	21.44%
ULTRACEMCO	10458.60	-61.50	-0.58%	1.81	188.85	12145.35	13.89%	9250.00	13.07%	-9.63%	8.76%
WIPRO	278.70	-2.20	-0.78%	86.03	237.27	324.60	14.14%	208.50	33.67%	-11.67%	-45.51%

Disclaimer / Disclosures

ANALYST CERTIFICATION

I, Mrs. Vaishali Parekh B.com, Research Analyst, author and the name subscribed to this report, hereby certify that all of the views expressed in this research report accurately reflect our views about the subject issuer(s) or securities. We also certify that no part of our compensation was, is, or will be directly or indirectly related to the specific recommendation(s) or view(s) in this report.

Terms & conditions and other disclosures:

Prabhudas Lilladher Pvt. Ltd, Mumbai, India (hereinafter referred to as "PL") is engaged in the business of Stock Broking, Portfolio Manager, Depository Participant and distribution for third party financial products. PL is a subsidiary of Prabhudas Lilladher Advisory Services Pvt Ltd. which has its various subsidiaries engaged in business of commodity broking, investment banking, financial services (margin funding) and distribution of third party financial/other products, details in respect of which are available at www.plindia.com

This document has been prepared by the Research Division of PL and is meant for use by the recipient only as information and is not for circulation. This document is not to be reported or copied or made available to others without prior permission of PL. It should not be considered or taken as an offer to sell or a solicitation to buy or sell any security.

The information contained in this report has been obtained from sources that are considered to be reliable. However, PL has not independently verified the accuracy or completeness of the same. Neither PL nor any of its affiliates, its directors or its employees accepts any responsibility of whatsoever nature for the information, statements and opinion given, made available or expressed herein or for any omission therein.

Recipients of this report should be aware that past performance is not necessarily a guide to future performance and value of investments can go down as well. The suitability or otherwise of any investments will depend upon the recipient's particular circumstances and, in case of doubt, advice should be sought from an independent expert/advisor.

Either PL or its affiliates or its directors or its employees or its representatives or its clients or their relatives may have position(s), make market, act as principal or engage in transactions of securities of companies referred to in this report and they may have used the research material prior to publication.

PL may from time to time solicit or perform investment banking or other services for any company mentioned in this document.

PL is registered as Research Analyst under Securities and Exchange Board of India (Research Analysts) Regulations, 2014 PL submits that no material disciplinary action has been taken on us by any Regulatory Authority impacting Equity Research Analysis activities.

PL or its research analysts or its associates or his relatives do not have any financial interest in the subject company.

PL or its research analysts or its associates or his relatives do not have actual/beneficial ownership of one per cent or more securities of the subject company at the end of the month immediately preceding the date of publication of the research report.

PL or its research analysts or its associates or his relatives do not have any material conflict of interest at the time of publication of the research report.

PL or its associates might have received compensation from the subject company in the past twelve months.

PL or its associates might have managed or co-managed public offering of securities for the subject company in the past twelve months or mandated by the subject company for any other assignment in the past twelve months.

PL or its associates might have received any compensation for investment banking or merchant banking or brokerage services from the subject company in the past twelve months.

PL or its associates might have received any compensation for products or services other than investment banking or merchant banking or brokerage services from the subject company in the past twelve months PL or its associates might have received any compensation or other benefits from the subject company or third party in connection with the research report.

PL encourages independence in research report preparation and strives to minimize conflict in preparation of research report. PL or its analysts did not receive any compensation or other benefits from the subject Company or third party in connection with the preparation of the research report. PL or its Research Analysts do not have any material conflict of interest at the time of publication of this report.

It is confirmed that Mrs. Vaishali Parekh B.com, Research Analyst of this report has not received any compensation from the companies mentioned in the report in the preceding twelve months compensation of our Research Analysts is not based on any specific merchant banking, investment banking or brokerage service transactions.

The Research analysts for this report certifies that all of the views expressed in this report accurately reflect his or her personal views about the subject company or companies and its or their securities, and no part of his or her compensation was, is or will be, directly or indirectly related to specific recommendations or views expressed in this report.

The research analysts for this report has not served as an officer, director or employee of the subject company PL or its research analysts have not engaged in market making activity for the subject company

Our sales people, traders, and other professionals or affiliates may provide oral or written market commentary or trading strategies to our clients that reflect opinions that are contrary to the opinions expressed herein, and our proprietary trading and investing businesses may make investment decisions that are inconsistent with the recommendations expressed herein. In reviewing these materials, you should be aware that any or all of the foregoing, among other things, may give rise to real or potential conflicts of interest.

PL and its associates, their directors and employees may (a) from time to time, have a long or short position in, and buy or sell the securities of the subject company or (b) be engaged in any other transaction involving such securities and earn brokerage or other compensation or act as a market maker in the financial instruments of the subject company or act as an advisor or lender/borrower to the subject company or may have any other potential conflict of interests with respect to any recommendation and other related information and opinions.