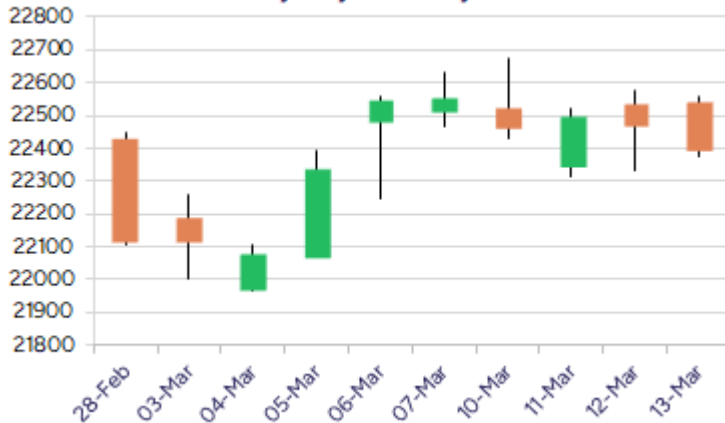


\* Sensex 73828.91 -200.85

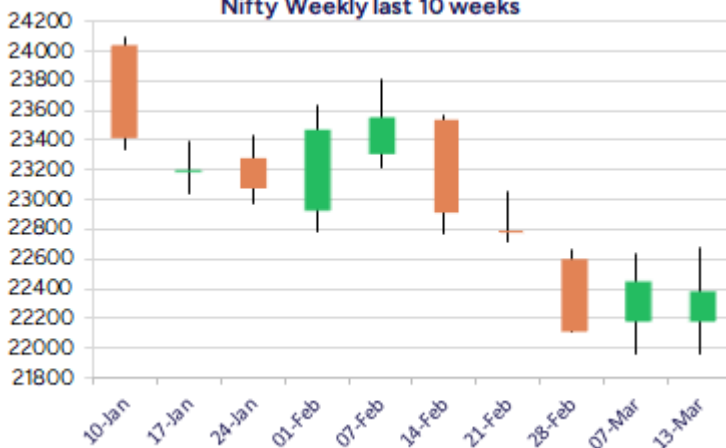
\* Nifty 22397.20 -73.30

\* Bank Nifty 48060.40 +03.75

Nifty daily last 10 days



Nifty Weekly last 10 weeks



\*Blue candle → Close rate > Open rate \* Red candle → Close rate < Open rate

## Market Preview

### Nifty slips below 22400 zone

Nifty witnessed profit booking and slipped below the 22400 zone with bias and sentiment once again maintained with a very cautious approach. BankNifty remains sluggish and has managed to maintain above the 48000 zone with bias and sentiment maintained intact. The market breadth was once again weak with the advance decline indicating a ratio of 2:3 at close.

## Market Forecast

### Nifty daily range 22300-22600

Nifty, during the intraday session, amid volatility found resistance near the 22550 zone and slipped with profit booking seen to end near the 22400 zone with once again the index precariously placed and having the bias maintained with a cautiously positive approach. As mentioned earlier, the index has the crucial and important support zone of 22000 level which needs to be sustained and on the upside, as mentioned earlier, only a decisive breach above 23000 level shall establish conviction to expect for further rise ahead.

BankNifty, continue to move sideways, overall sustaining above the important and crucial support zone of 47800 levels and as mentioned earlier, with most of the frontline banking stocks looking well poised for further upward move, we expect the index to gain strength in the coming days. The index would need a decisive breach above the 50EMA zone of 49500 levels to improve the bias and thereafter, trigger for further rise in the coming days.

The support for the day is seen at 22300 levels while the resistance is seen at 22600 levels. BankNifty would have the daily range of 47600-48600 levels.

Indices	Period	Closing	% Chng	Trend	Reversal	2 Sup	1 Sup	Pivot	1 Res	2 Res
Nifty	Daily	22397.20	-0.33%	7	22425.25	22263	22330	22444	22511	22625
	Weekly	22397.20	-0.69%	-5	22562.50	22101	22249	22463	22611	22825
	Monthly	23508.40	-0.58%	-5	26264.60	22068	22788	23507	24228	24947
Bank Nifty	Daily	48060.40	0.01%	-4	48116.65	47793	47927	48140	48273	48486
	Weekly	48060.40	-0.90%	-5	48619.15	47225	47642	48121	48539	49017
	Monthly	49587.20	-2.50%	-5	52793.25	45873	47730	49701	51559	53530
Sensex	Daily	73828.91	-0.27%	7	73936.10	73370	73599	74000	74230	74631
	Weekly	73828.91	-0.68%	-5	74562.50	72913	73371	74056	74514	75199
	Monthly	77500.57	-0.82%	-5	85764.50	72808	75154	77614	79960	82419

## Daily Trend turned Down

Scrip Name	LCP	Curr Trnd	Reversal
AARTIIND	382.75	6	393.45
ADANIENT	2221.1	8	2232.7
AMBUJACEM	485.8	8	490.6
ASHOKA	172.12	6	176.2
ASIANPAINT	2231.3	5	2236.2
BHARATFORG	1039.25	8	1056.8
CANFINHOME	601.75	7	606.75
CONCOR	640.25	6	644.2
GNFC	482.4	6	492.75
GRASIM	2370.2	8	2394.15
HINDALCO	677.35	6	688.65
JINDALSTEL	889.7	7	903.25

\* Trends turned Down after a significant period

## Daily Trend turned Down

Scrip Name	LCP	Curr Trnd	Reversal
JSWSTEELLTD	1001.2	6	1012.45
KAJARIACER	860.1	11	871.2
LICHSGFIN	515.6	6	522.9
MOTHERSUMI	121.76	6	124.05
NBCC	77.89	6	78.4
NMDC	63.8	6	65.05
PEL	885.95	6	902.4
PFCL	388.35	8	397.15
RALLIS	207.44	7	213.7
SPARC	122.41	7	124.7
SRTRANSFIN	619.55	7	627
TATACHEM	796.1	6	801.85

\* Trends turned Down after a significant period

## Gainers - Losers ( Nifty 500 Stocks )

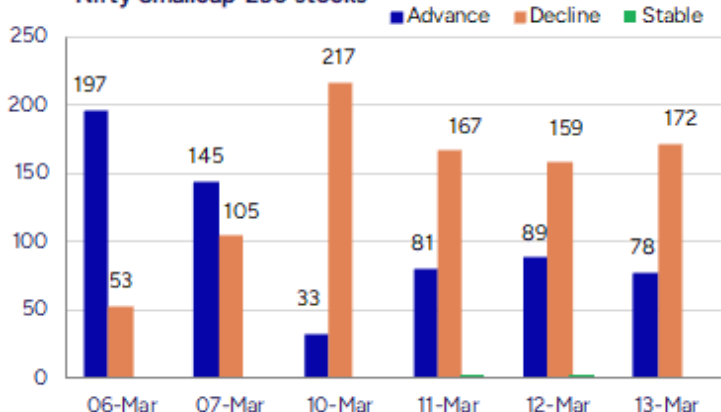
## Gainers

Scrip Name	LCP	% Change	Volume
Hitech Corp	197.05	20	258743
Nacl Industries	92.38	16.08	13577382
Gandhi Spl Tube	728.2	15.17	215972
Fairchem Org.	1021.9	14.17	374494
Arihant Capital	71.68	13.04	1047598
MTNL	48.88	13.04	76027064
Voler Car	90	11.11	81600

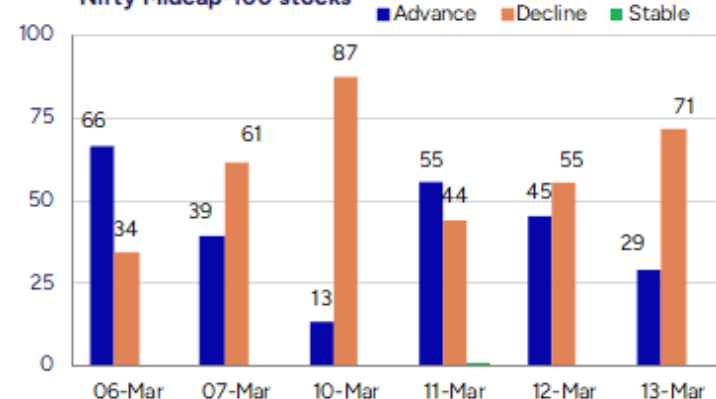
## Losers

Scrip Name	LCP	% Change	Volume
CMM Infracore	1.75	-27.08	9000
Plada Infotech	19.5	-11.36	21000
Pearl Global In	1365.8	-10.62	352881
Ushanti Colour	60	-10.45	28000
Sahaj Solar	354.05	-10.17	55800
Sati Poly Plast	83.7	-10	31500
Swaraj Suiting	162.85	-9.53	60500

## Nifty Smallcap-250 stocks



## Nifty Midcap-100 stocks



### Nifty Daily chart with RSI indicator



### BankNifty Daily chart with RSI indicator



**Breakouts - Cross above 200 DMA**

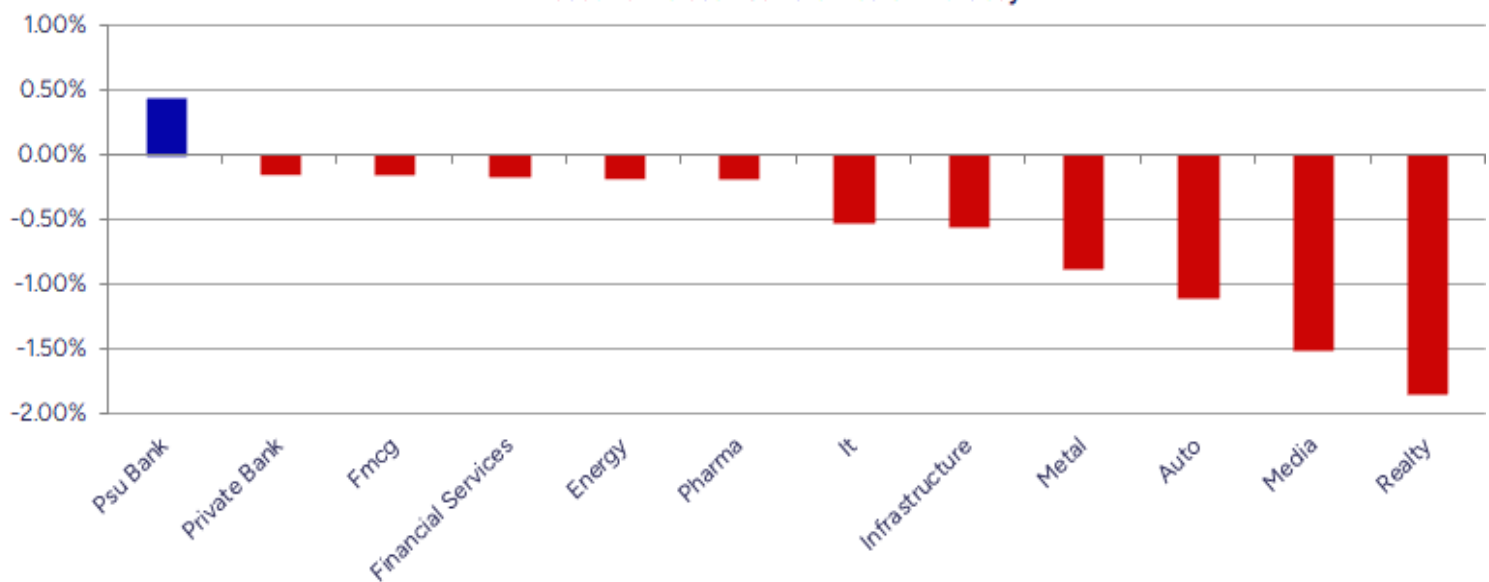
Company Name	LCP	Change %	200 DMA
Dishman Carbogee	209.89	1.30	207.19
Mangalore Chem	142.48	1.29	140.67
Beta Drugs	1706.4	0.87	1691.74
KDDL	2897.05	0.21	2891.1
Indus Infra Tru	110.92	0.20	110.7

**Breakdown - Cross below 200 DMA**

Company Name	LCP	Change %	200 DMA
Globus Spirits	881.2	-5.46	932.09
Prozone Intu	28.44	-3.33	29.42
TECHLABS	898.25	-2.80	924.12
Sundaram-Clayto	2071.55	-2.67	2128.45
Stove	740.95	-2.28	758.26
BSE Limited	3926.25	-1.98	4005.41
Nagreeka Cap	29.24	-1.62	29.72
Gillanders Arbu	98.31	-1.60	99.91
Refex Ind	381.95	-1.28	386.89
Avro India	157.99	-1.27	160.02
MO Nasdaq Q50	71.98	-1.17	72.83
Guj Heavy Chem	617.7	-1.05	624.23
Aadhar Housing	414.65	-0.91	418.44
Arihant Super	382.15	-0.87	385.49
Kitex Garments	160.79	-0.61	161.78
Borosil Renew	505.6	-0.43	507.79
One 97 Comm	682.85	-0.29	684.81
Interiors & Mor	298.2	-0.23	298.9

\* Stocks crossing above its Simple Moving Average (200DMA)

\* Stocks crossing below its Simple Moving Average (200DMA)

**Sectoral Indices - Gainers Losers for the day**


Stocks witnessing a volume surge as compared to their 5 day average volume

Watch out for the stocks that have seen a huge spurt in its share price over the last three days

Volume Shockers - NSE					
Company name	LCP	% Chg	Volume	Avg Vol *	% Chg
Data Patterns	1663.1	<b>4.84</b>	12843379	106334	11978
Gandhi Spl Tube	728.2	<b>15.17</b>	215972	2522	8464
BEW Engineering	141.65	<b>-2.04</b>	39500	1125	3411
Fairchem Org.	1021.9	<b>14.17</b>	374494	14306	2518
Hitech Corp	197.05	<b>20</b>	258743	10155	2448
Adani Green Ene	873.65	<b>2.37</b>	11778429	480592	2351
Nacl Industries	92.38	<b>16.08</b>	13577382	580493	2239
A B Infrabuild	91.76	<b>7.06</b>	350804	15200	2208
Touchwood Enter	79.94	<b>0.68</b>	68354	3929	1640
Kamat Hotels	314.9	<b>-1.08</b>	796755	48751	1534
MRPL	119.33	<b>6.46</b>	40022486	2578199	1452
Atal	12.24	<b>-1.45</b>	1537347	100889	1424
Fonebox Retail	100.05	<b>0.55</b>	76000	5200	1362
Krishna Institu	570.55	<b>3.79</b>	784531	59456	1220
Jindal Drilling	882.45	<b>-2.02</b>	444487	34855	1175
Hatsun Agro	868	<b>-0.07</b>	399116	32745	1119
MTNL	48.88	<b>13.04</b>	76027064	6435471	1081
Digjam	38.66	<b>-3.64</b>	32253	2744	1075
Precision	23.75	<b>-8.83</b>	252000	22000	1045
Johnson Control	1822.85	<b>4.69</b>	304148	26744	1037

\* the Average Volume of last 5 days

Price Shockers - NSE				
Company name	LCP	3 days *	% Chg	Volume
Nacl Industries	92.38	67.4	<b>37.06</b>	13577382
SEPC	16.42	13.29	<b>23.55</b>	72970990
Kolte-Patil	346.65	285.9	<b>21.25</b>	2973404
Carysil	619.85	512.8	<b>20.88</b>	1844458
MTNL	48.88	41.44	<b>17.95</b>	76027064
GRP	2609.25	2239.65	<b>16.5</b>	6142
Gandhi Spl Tube	728.2	625.9	<b>16.34</b>	215972
ARSS Infra	36.17	31.25	<b>15.74</b>	28054
Giriraj Civil D	295	255	<b>15.69</b>	250
Hitech Corp	197.05	170.42	<b>15.63</b>	258743
Vadivarhe Speci	28	24.25	<b>15.46</b>	6000
Polysil Irrigat	19.7	17.1	<b>15.2</b>	4000
Indostar Capita	262.3	229.08	<b>14.5</b>	360260
Manomay Tex Ind	184.76	162.18	<b>13.92</b>	4900
Himatsingka Sei	145.58	128.06	<b>13.68</b>	1547017
Hindustan Media	84.65	74.89	<b>13.03</b>	76453
United Polyfab	143.34	127.08	<b>12.8</b>	44655
Transindia Real	31.54	28.02	<b>12.56</b>	748274
Ndr Auto Compon	699.7	624.75	<b>12</b>	19949
Fairchem Org.	1021.9	913.75	<b>11.84</b>	374494

\* the % price rise of the last 3 days

Nifty 50 stocks - Summary Details											
Symbol	LTP	Chng	% Chng	Volume (lacs)	Turnover (crs.)	52w High	Diff with 52w H	52w Low	Diff with 52w L	365 days % chng	30 days % chng
NIFTY 50	22397.20	-73.30	-0.33%	2875.29	22855.00	26277.35	14.77%	21281.45	5.24%	-3.90%	0.60%
ADANIENT	2222.45	-19.35	-0.86%	7.50	167.91	3743.90	40.64%	2025.00	9.75%	-2.14%	-28.20%
ADANIPTS	1118.20	-10.10	-0.90%	13.59	152.94	1621.40	31.03%	995.65	12.31%	-1.39%	-13.29%
APOLLOHOSP	6095.20	-48.55	-0.79%	2.48	151.30	7545.35	19.22%	5693.20	7.06%	-9.13%	-0.02%
ASIANPAINT	2228.00	-23.30	-1.03%	7.47	167.39	3394.90	34.37%	2124.75	4.86%	-0.83%	-21.73%
AXISBANK	1010.30	-0.90	-0.09%	40.04	404.73	1339.65	24.58%	933.50	8.23%	-0.05%	-7.82%
BAJAJ-AUTO	7500.05	-15.00	-0.20%	4.55	339.75	12774.00	41.29%	7301.00	2.73%	-15.38%	-11.87%
BAJAJFINSV	1807.00	-12.45	-0.68%	13.34	242.31	2029.90	10.98%	1419.05	27.34%	1.51%	14.18%
BAJFINANCE	8415.00	-69.45	-0.82%	12.17	1031.25	8739.00	3.71%	6297.80	33.62%	2.39%	31.83%
BEL	280.10	3.27	1.18%	380.15	1073.97	340.50	17.74%	179.10	56.39%	1.24%	35.53%
BHARTIARTL	1632.90	-9.95	-0.61%	83.17	1363.95	1779.00	8.21%	1151.70	41.78%	-2.97%	36.42%
BPCL	263.80	-2.52	-0.95%	45.45	120.14	376.00	29.84%	234.01	12.73%	2.47%	-57.42%
BRITANNIA	4730.00	-62.05	-1.29%	2.85	135.49	6469.90	26.89%	4506.00	4.97%	-2.40%	-1.58%
CIPLA	1460.05	5.75	0.40%	8.04	117.45	1702.05	14.22%	1317.25	10.84%	-0.31%	-0.78%
COALINDIA	378.75	-1.95	-0.51%	39.16	148.79	543.55	30.32%	349.25	8.45%	2.75%	-15.27%
DRREDDY	1106.35	1.20	0.11%	12.99	143.51	1421.49	22.17%	1092.45	1.27%	-9.48%	-82.46%
EICHERMOT	5010.00	-7.45	-0.15%	2.66	133.28	5575.50	10.14%	3672.00	36.44%	-5.96%	31.67%
GRASIM	2368.00	-30.90	-1.29%	4.80	114.04	2877.75	17.71%	2128.60	11.25%	-3.01%	9.84%
HCLTECH	1532.00	-8.60	-0.56%	19.83	304.65	2012.20	23.86%	1235.00	24.05%	-11.15%	-5.81%
HDFCBANK	1705.00	-6.15	-0.36%	78.68	1346.31	1880.00	9.31%	1421.25	19.96%	-0.27%	17.24%
HDFCLIFE	620.65	-11.35	-1.80%	22.11	138.33	761.20	18.46%	511.40	21.36%	-0.58%	1.68%
HEROMOTOCO	3528.65	-81.60	-2.26%	3.60	128.01	6246.25	43.51%	3495.00	0.96%	-13.97%	-22.51%
HINDALCO	678.05	-11.80	-1.71%	48.78	331.05	772.65	12.24%	501.20	35.29%	15.75%	30.42%
HINDUNILVR	2177.00	-15.90	-0.73%	18.46	403.37	3035.00	28.27%	2136.00	1.92%	-7.14%	-7.79%
ICICIBANK	1248.65	4.70	0.38%	81.33	1017.40	1362.35	8.35%	1048.10	19.13%	-1.48%	15.52%
INDUSINDBK	672.65	-12.05	-1.76%	315.92	2158.77	1576.35	57.33%	606.00	11.00%	-35.89%	-55.34%
INFY	1579.00	-11.85	-0.74%	78.23	1237.81	2006.45	21.30%	1358.35	16.24%	-15.39%	-1.37%
ITC	411.45	-0.95	-0.23%	81.96	338.02	528.50	22.15%	391.20	5.18%	-3.46%	1.97%
JSWSTEEL	1000.00	-10.40	-1.03%	12.18	122.71	1063.00	5.93%	761.75	31.28%	5.34%	23.55%
KOTAKBANK	1981.50	-1.05	-0.05%	49.26	977.75	1997.70	0.81%	1543.85	28.35%	1.14%	15.24%
LT	3189.00	-4.65	-0.15%	14.14	453.12	3963.50	19.54%	3141.00	1.53%	-4.06%	-11.82%
M&M	2644.50	-8.80	-0.33%	24.46	646.68	3270.95	19.15%	1788.80	47.84%	-15.43%	40.00%
MARUTI	11519.60	-120.50	-1.04%	2.61	301.83	13680.00	15.79%	10725.00	7.41%	-9.77%	1.13%
NESTLEIND	2189.25	-6.25	-0.28%	2.92	64.06	2778.00	21.19%	2110.00	3.76%	-1.15%	-15.24%
NTPC	330.75	0.60	0.18%	89.65	297.37	448.45	26.25%	292.80	12.96%	6.33%	-4.23%
ONGC	225.02	0.62	0.28%	161.05	366.26	345.00	34.78%	215.48	4.43%	-7.44%	-17.01%
POWERGRID	268.05	0.95	0.36%	92.70	248.29	366.25	26.81%	247.30	8.39%	-0.60%	-6.33%
RELIANCE	1246.65	-10.40	-0.83%	95.05	1192.14	1608.80	22.51%	1156.00	7.84%	0.27%	-57.40%
SBILIFE	1390.00	-19.00	-1.35%	9.11	126.99	1936.00	28.20%	1307.70	6.29%	-2.71%	-7.08%
SBIN	728.00	4.95	0.68%	59.08	430.35	912.00	20.18%	680.00	7.06%	-1.87%	-4.82%
SHRIRAMFIN	620.00	-16.95	-2.66%	52.73	328.89	730.45	15.12%	438.60	41.36%	13.58%	-73.70%
SUNPHARMA	1679.85	3.00	0.18%	16.67	280.06	1960.35	14.31%	1377.20	21.98%	-3.19%	5.84%
TATACONSUM	945.00	-0.45	-0.05%	9.08	86.08	1250.10	24.41%	882.90	7.03%	-7.99%	-22.20%
TATAMOTORS	654.70	-13.60	-2.04%	140.04	921.67	1179.00	44.47%	606.30	7.98%	-3.98%	-34.25%
TATASTEEL	150.70	0.40	0.27%	482.86	731.39	184.60	18.36%	122.62	22.90%	12.13%	-1.44%
TCS	3509.05	2.85	0.08%	16.93	593.30	4592.25	23.59%	3457.00	1.51%	-13.15%	-16.36%
TECHM	1438.00	-0.30	-0.02%	9.96	143.17	1807.70	20.45%	1162.95	23.65%	-15.35%	11.30%
TITAN	3005.00	-13.95	-0.46%	7.85	236.95	3867.00	22.29%	2996.05	0.30%	-9.27%	-19.47%
TRENT	5020.80	5.45	0.11%	8.60	433.96	8345.00	39.83%	3843.00	30.65%	-3.49%	25.11%
ULTRACEMCO	10458.00	-62.40	-0.59%	2.19	229.17	12145.35	13.89%	9250.00	13.06%	-8.77%	9.41%
WIPRO	264.20	-4.35	-1.62%	86.84	230.88	324.60	18.61%	208.50	26.71%	-15.83%	-47.43%

## Disclaimer / Disclosures

### ANALYST CERTIFICATION

I, Mrs. Vaishali Parekh B.com, Research Analyst, author and the name subscribed to this report, hereby certify that all of the views expressed in this research report accurately reflect our views about the subject issuer(s) or securities. We also certify that no part of our compensation was, is, or will be directly or indirectly related to the specific recommendation(s) or view(s) in this report.

Terms & conditions and other disclosures:

Prabhudas Lilladher Pvt. Ltd, Mumbai, India (hereinafter referred to as "PL") is engaged in the business of Stock Broking, Portfolio Manager, Depository Participant and distribution for third party financial products. PL is a subsidiary of Prabhudas Lilladher Advisory Services Pvt Ltd. which has its various subsidiaries engaged in business of commodity broking, investment banking, financial services (margin funding) and distribution of third party financial/other products, details in respect of which are available at [www.plindia.com](http://www.plindia.com)

This document has been prepared by the Research Division of PL and is meant for use by the recipient only as information and is not for circulation. This document is not to be reported or copied or made available to others without prior permission of PL. It should not be considered or taken as an offer to sell or a solicitation to buy or sell any security.

The information contained in this report has been obtained from sources that are considered to be reliable. However, PL has not independently verified the accuracy or completeness of the same. Neither PL nor any of its affiliates, its directors or its employees accepts any responsibility of whatsoever nature for the information, statements and opinion given, made available or expressed herein or for any omission therein.

Recipients of this report should be aware that past performance is not necessarily a guide to future performance and value of investments can go down as well. The suitability or otherwise of any investments will depend upon the recipient's particular circumstances and, in case of doubt, advice should be sought from an independent expert/advisor.

Either PL or its affiliates or its directors or its employees or its representatives or its clients or their relatives may have position(s), make market, act as principal or engage in transactions of securities of companies referred to in this report and they may have used the research material prior to publication.

PL may from time to time solicit or perform investment banking or other services for any company mentioned in this document.

PL is registered as Research Analyst under Securities and Exchange Board of India (Research Analysts) Regulations, 2014 PL submits that no material disciplinary action has been taken on us by any Regulatory Authority impacting Equity Research Analysis activities.

PL or its research analysts or its associates or his relatives do not have any financial interest in the subject company.

PL or its research analysts or its associates or his relatives do not have actual/beneficial ownership of one per cent or more securities of the subject company at the end of the month immediately preceding the date of publication of the research report.

PL or its research analysts or its associates or his relatives do not have any material conflict of interest at the time of publication of the research report.

PL or its associates might have received compensation from the subject company in the past twelve months.

PL or its associates might have managed or co-managed public offering of securities for the subject company in the past twelve months or mandated by the subject company for any other assignment in the past twelve months.

PL or its associates might have received any compensation for investment banking or merchant banking or brokerage services from the subject company in the past twelve months.

PL or its associates might have received any compensation for products or services other than investment banking or merchant banking or brokerage services from the subject company in the past twelve months PL or its associates might have received any compensation or other benefits from the subject company or third party in connection with the research report.

PL encourages independence in research report preparation and strives to minimize conflict in preparation of research report. PL or its analysts did not receive any compensation or other benefits from the subject Company or third party in connection with the preparation of the research report. PL or its Research Analysts do not have any material conflict of interest at the time of publication of this report.

It is confirmed that Mrs.Vaishali Parekh B.com, Research Analyst of this report has not received any compensation from the companies mentioned in the report in the preceding twelve months compensation of our Research Analysts is not based on any specific merchant banking, investment banking or brokerage service transactions.

The Research analysts for this report certifies that all of the views expressed in this report accurately reflect his or her personal views about the subject company or companies and its or their securities, and no part of his or her compensation was, is or will be, directly or indirectly related to specific recommendations or views expressed in this report.

The research analysts for this report has not served as an officer, director or employee of the subject company PL or its research analysts have not engaged in market making activity for the subject company

Our sales people, traders, and other professionals or affiliates may provide oral or written market commentary or trading strategies to our clients that reflect opinions that are contrary to the opinions expressed herein, and our proprietary trading and investing businesses may make investment decisions that are inconsistent with the recommendations expressed herein. In reviewing these materials, you should be aware that any or all of the foregoing, among other things, may give rise to real or potential conflicts of interest.

PL and its associates, their directors and employees may (a) from time to time, have a long or short position in, and buy or sell the securities of the subject company or (b) be engaged in any other transaction involving such securities and earn brokerage or other compensation or act as a market maker in the financial instruments of the subject company or act as an advisor or lender/borrower to the subject company or may have any other potential conflict of interests with respect to any recommendation and other related information and opinions.