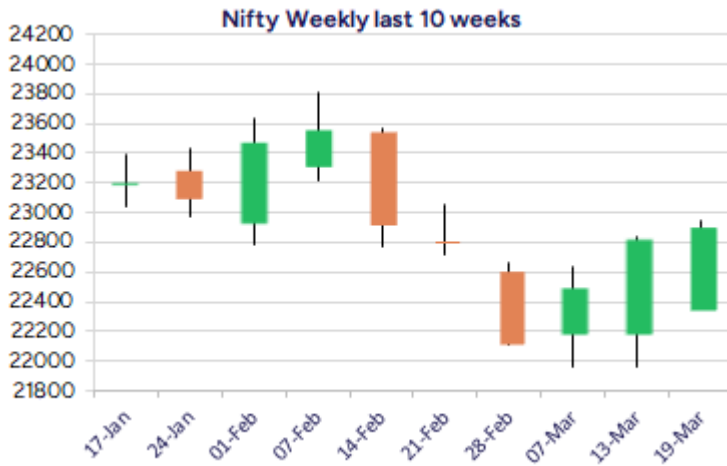
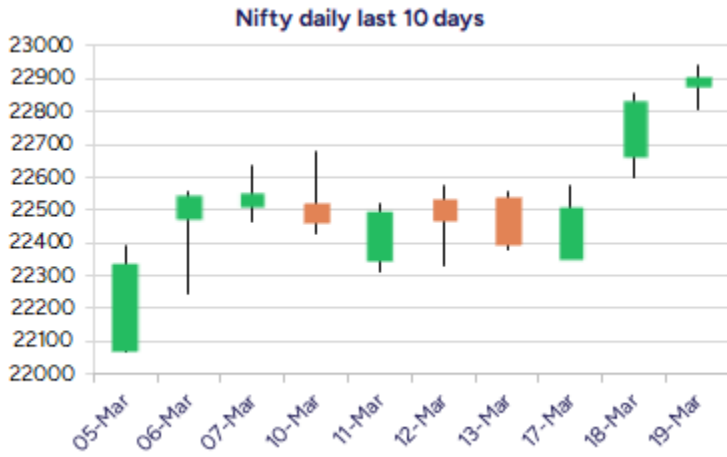


* Sensex 75449.05 + 147.79

* Nifty 22907.60 + 73.30

* Bank Nifty 49702.60 + 388.10



*Blue candle → Close rate > Open rate * Red candle → Close rate < Open rate

Market Preview

Nifty extend gains; sentiment improves

Nifty extended the gains to almost touch the 23000 zone during the intraday session with sentiment improving and expecting for further rise in the coming sessions. BankNifty once again gave a strong move with frontline banking stocks supporting the index to surge ahead. The market breadth was once again maintained strong with the advance decline indicating a ratio of 5:1 at close.

Market Forecast

Nifty daily range 22800-23200

Nifty, extended the gains with a steady gradual rise but resisted near the 22950 zone to end on a positive note near 22900 level with bias and sentiment improving and expecting for further upward move. The index would need to breach above the important and crucial hurdle of 23000 zone which would trigger for a fresh breakout above the descending channel pattern on the daily chart and can expect for higher targets of 23800 and 24200 levels.

BankNifty, continued with the strong move to gain momentum and decisively moving past the 50EMA zone of 49250 level has further strengthened the bias closing near the 49700 level. We can expect the index to move ahead for next targets of 50900 (200 period MA) and 51800 levels in the coming days with most of the frontline banking stocks supporting the index, as mentioned earlier.

The support for the day is seen at 22800 levels while the resistance is seen at 23200 levels. BankNifty would have the daily range of 49300-50500 levels.

Indices	Period	Closing	% Chng	Trend	Reversal	2 Sup	1 Sup	Pivot	1 Res	2 Res
Nifty	Daily	22907.60	0.32%	10	22513.75	22753	22830	22885	22963	23018
	Weekly	22397.20	-0.69%	-5	22562.50	22101	22249	22463	22611	22825
	Monthly	23508.40	-0.58%	-5	26264.60	22068	22788	23507	24228	24947
Bank Nifty	Daily	49702.60	0.79%	3	48276.50	49129	49416	49612	49898	50094
	Weekly	48060.40	-0.90%	-5	48619.15	47225	47642	48121	48539	49017
	Monthly	49587.20	-2.50%	-5	52793.25	45873	47730	49701	51559	53530
Sensex	Daily	75449.05	0.20%	10	74109.60	75039	75244	75406	75611	75773
	Weekly	73828.91	-0.68%	-5	74562.50	72913	73371	74056	74514	75199
	Monthly	77500.57	-0.82%	-5	85764.50	72808	75154	77614	79960	82419

Daily Trend turned Up

Scrip Name	LCP	Curr Trnd	Reversal
AARTIIND	399.35	-3	388.05
ARVIND	332	-6	323.75
ASTRAL	1261	-6	1250.05
AUBANK	525.8	-7	505.75
BPCL	265.26	-2	263.15
DELTACORP	88.3	-6	87.05
GODREJIND	1167.5	-2	1154.4
GREENPLY	275.45	-4	266
GSPL	277.15	-4	274.35
HINDPETRO	328	-3	326.3
INDUSINDBK	692.7	-12	687.85
JUSTDIAL	855.7	-4	835.35

* Trends turned Up after a significant period

Daily Trend turned Down

Scrip Name	LCP	Curr Trnd	Reversal
BERGEPAIN	501.4	2	501.4
BRITANNIA	4707.1	1	4721.95
DABUR	495.45	8	495.7
EMAMILTD	557.75	1	558.45
INFY	1586.55	1	1591.95
ITC	403.05	9	407.5
NAVINFLUOR	4072.4	10	4136.6
ZEETELE	100.29	1	103.4

* Trends turned Down after a significant period

Gainers - Losers (Nifty 500 Stocks)

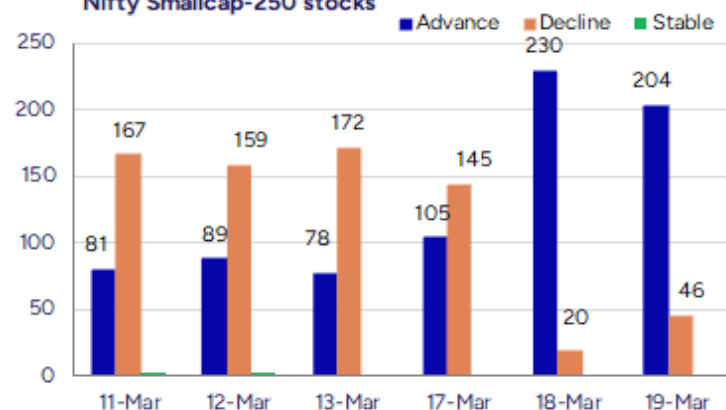
Gainers

Scrip Name	LCP	% Change	Volume
Garden Reach Sh	1641.35	20	7963786
Vibhor Steel	155.83	20	75876
SKP Bearing	248.85	19.99	36000
SAR Televenture	237.95	19.78	645500
Asian Energy	287.41	19.39	650850
Sindhu Trade	19.08	19.32	11182445
Srivasavi	71.5	17.99	92000

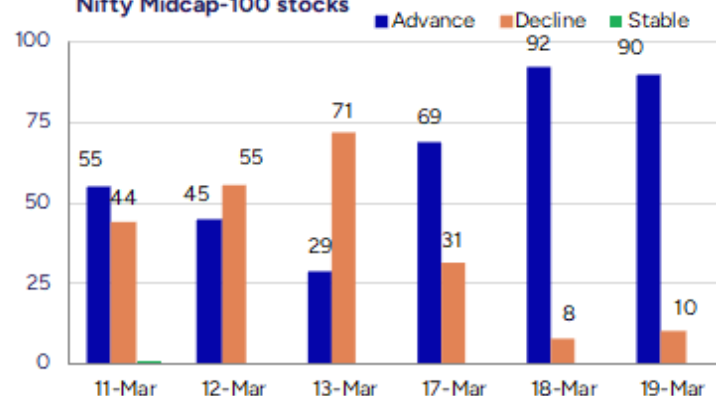
Losers

Scrip Name	LCP	% Change	Volume
Rockingdeals	310.6	-12.01	168500
Saroja Pharma	42.55	-11.35	6400
Pramara	112.25	-9.33	48000
Sangani HOSP	50.25	-6.94	33000
Chamunda Electr	44.3	-6.64	366000
Centum Electron	1450	-6.34	178765
NR Agarwal	217.2	-5.15	39878

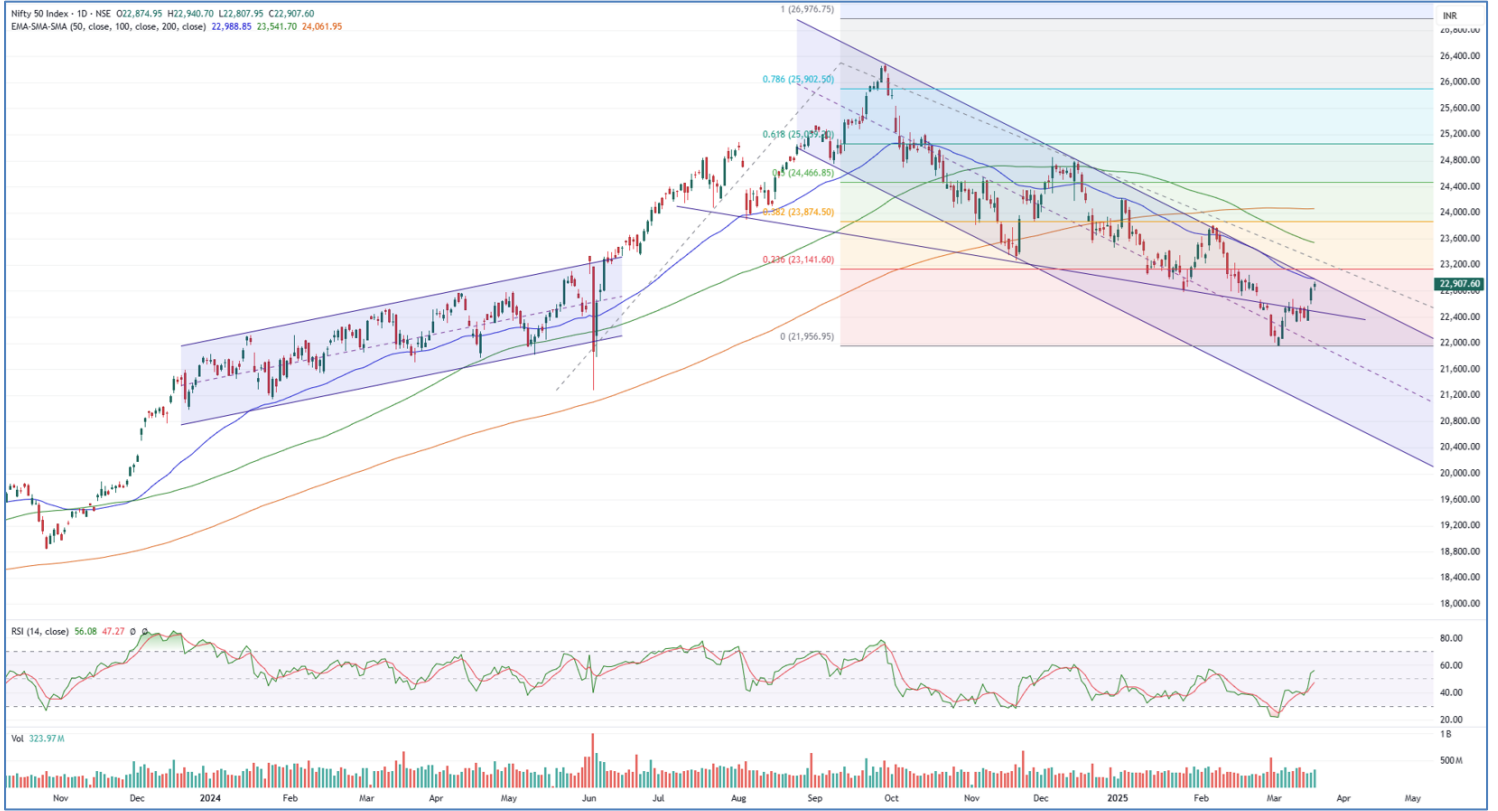
Nifty Smallcap-250 stocks



Nifty Midcap-100 stocks



Nifty Daily chart with RSI indicator



BankNifty Daily chart with RSI indicator



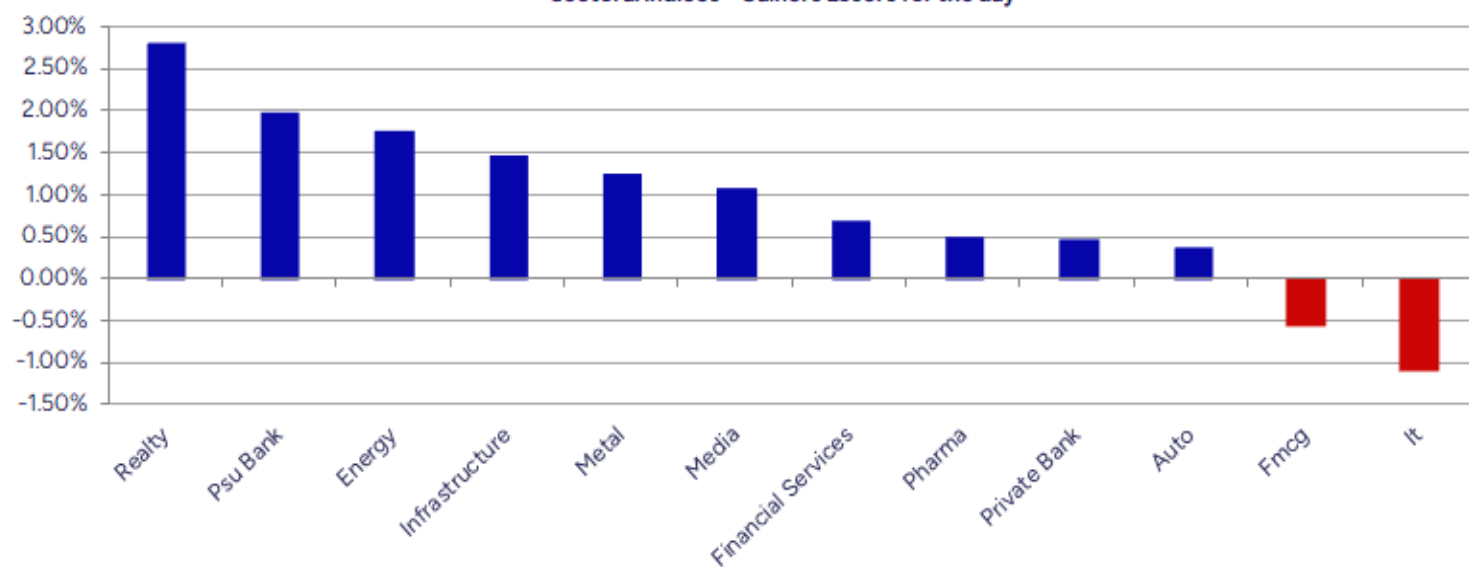
Breakouts - Cross above 200 DMA			
Company Name	LCP	Change %	200 DMA
SKP Bearing	248.85	9.62	227.01
Hisar Metal	210.75	9.21	192.97
Tokyo Plast	129.99	8.39	119.93
Ajmera Realty	881.7	5.75	833.77
Balrampur Chini	539.9	3.84	519.92
LT Foods	371.85	3.59	358.97
Sunflag Iron	239.75	3.44	231.78
Alpa Labs	111.56	3.28	108.02
Reliance Power	37.72	3.17	36.56
Manaksia Coated	79.58	3.16	77.14
Bannariamman	3500.1	3.00	3398.02
Mohini Health &	60.35	2.83	58.69
Epigral	1884.05	2.65	1835.44
Nazara	957.9	1.97	939.35
Nila Spaces	12.3	1.74	12.09
Sudarshan Chem	1007.05	1.63	990.91
ASK Auto	428.6	1.58	421.94
Mirae S&P 500	50.12	144.00%	49.41

* Stocks crossing above its Simple Moving Average (200DMA)

Breakdown - Cross below 200 DMA			
Company Name	LCP	Change %	200 DMA
KCK Industries	40.25	-3.27	41.61
Castrol	218.78	-1.28	221.61
Kanpur Plast	118.92	-0.68	119.74
Sun Pharma	1732.35	-0.45	1740.24
IndiGrid Infra	141.07	-0.42	141.67

* Stocks crossing below its Simple Moving Average (200DMA)

Sectoral Indices - Gainers Losers for the day



Stocks witnessing a volume surge as compared to their 5 day average volume

Watch out for the stocks that have seen a huge spurt in its share price over the last three days

Volume Shockers - NSE					
Company name	LCP	% Chg	Volume	Avg Vol *	% Chg
G R Infraprojec	1026.1	9.08	6366405	30802	20569
Data Patterns	1714.05	3.86	5347523	106334	4929
Mahindra Life	327.45	5.26	8388977	210784	3880
Jai Balaji Ind	142.78	1.96	2093114	54390	3748
Praxis Home Ret	11.98	-5.07	2035608	62438	3160
Jindal Drilling	912	-4.85	1087314	34855	3020
Medicamen Bio	446.55	10.9	287526	9625	2887
Techno Electric	1032.35	10.92	2034252	88472	2199
BEW Engineering	151.45	3.31	24000	1125	2033
Kaya	221.5	-4.44	124495	6240	1895
TT	12.82	1.18	1044397	56021	1764
Sheela Foam	722.85	3.66	699317	37992	1741
Kore Digital	289.45	4.93	179100	10560	1596
Tanla Platforms	520.6	17.54	22252618	1373037	1521
MBL Infra	36.96	3.3	981263	65421	1400
Shakti Pumps	1002.45	4.81	559177	38631	1347
Baweja Studios	54.95	6.18	299200	21120	1317
Premier Explo	371.45	13.42	1028423	77069	1234
Sterling Wilson	241.15	6.12	7748007	581779	1232
Kamat Hotels	323.1	-2.24	633795	48751	1200

* the Average Volume of last 5 days

Price Shockers - NSE					
Company name	LCP	3 days *	% Chg	Volume	
Sindhu Trade	19.08	13.6	40.29	11182445	
Uttam Sugar	252.55	186.52	35.4	1618513	
GVP Infotech	10.51	7.91	32.87	331553	
Talbro's Auto	265.03	209.53	26.49	652768	
Talbro's Auto	265.03	209.53	26.49	652768	
Garden Reach Sh	1641.35	1303.35	25.93	7963942	
BLB	16.26	13.18	23.37	173585	
Indraprastha	387.6	315.45	22.87	677429	
Dolat Algotech	85.96	70.21	22.43	3326826	
TT	12.82	10.57	21.29	1045427	
Marathon Realty	470.4	388.5	21.08	217951	
Tanla Platforms	520.6	430.65	20.89	22256588	
Vibhor Steel	155.83	129	20.8	75876	
Gulshan Poly	188.62	156.63	20.42	859672	
Nalwa Sons	6243.05	5217.25	19.66	58249	
Transformers	445.15	374.25	18.94	1234599	
Greenlam Ind	555.7	467.3	18.92	117710	
Asian Energy	287.41	241.92	18.8	650850	
Swaraj Engines	3742.7	3158.95	18.48	127083	
Moksh Ornaments	14.66	12.4	18.23	2120512	

* the % price rise of the last 3 days

Nifty 50 stocks - Summary Details											
Symbol	LTP	Chng	% Chng	Volume (lacs)	Turnover (crs.)	52w High	Diff with 52w H	52w Low	Diff with 52w L	365 days % chng	30 days % chng
NIFTY 50	22907.60	73.30	0.32%	3239.76	26993.87	26277.35	12.82%	21281.45	7.64%	-0.41%	3.53%
ADANIANT	2316.90	8.40	0.36%	10.30	239.52	3743.90	38.12%	2025.00	14.41%	7.24%	-25.81%
ADANIPTS	1171.70	12.90	1.11%	24.17	283.94	1621.40	27.74%	995.65	17.68%	9.04%	-8.51%
APOLLOHOSP	6430.00	183.20	2.93%	5.80	370.47	7545.35	14.78%	5693.20	12.94%	-0.38%	1.80%
ASIANPAINT	2281.00	7.05	0.31%	6.63	151.18	3394.90	32.81%	2124.75	7.35%	1.91%	-20.11%
AXISBANK	1051.50	6.25	0.60%	48.22	508.11	1339.65	21.51%	933.50	12.64%	4.79%	-1.52%
BAJAJ-AUTO	7711.25	97.85	1.29%	4.09	315.68	12774.00	39.63%	7301.00	5.62%	-10.50%	-10.66%
BAJAJFINSV	1841.00	-3.65	-0.20%	24.12	446.57	2029.90	9.31%	1419.05	29.73%	0.18%	16.97%
BAJFINANCE	8693.25	10.75	0.12%	12.90	1133.05	8879.00	2.09%	6375.70	36.35%	3.46%	33.48%
BEL	289.98	4.67	1.64%	210.95	610.07	340.50	14.84%	182.50	58.89%	13.96%	50.24%
BHARTIARTL	1635.00	7.70	0.47%	62.83	1027.09	1779.00	8.09%	1183.10	38.20%	-5.23%	32.81%
BPCL	265.60	3.42	1.30%	49.55	131.47	376.00	29.36%	234.01	13.50%	4.45%	-54.98%
BRITANNIA	4740.05	-28.25	-0.59%	4.69	221.32	6469.90	26.74%	4506.00	5.19%	-3.47%	-4.25%
CIPLA	1499.45	-9.20	-0.61%	10.16	152.49	1702.05	11.90%	1317.25	13.83%	3.37%	1.36%
COALINDIA	395.75	6.45	1.66%	58.27	230.12	543.55	27.19%	349.25	13.31%	9.91%	-7.72%
DRREDDY	1171.00	7.30	0.63%	15.07	175.94	1421.49	17.62%	1092.45	7.19%	-2.79%	-81.65%
EICHERMOT	5105.00	-22.40	-0.44%	4.18	212.98	5575.50	8.44%	3672.00	39.03%	9.02%	38.59%
GRASIM	2460.00	38.35	1.58%	4.15	101.87	2877.75	14.52%	2131.00	15.44%	-0.40%	9.92%
HCLTECH	1547.00	-11.20	-0.72%	45.23	694.79	2012.20	23.12%	1235.00	25.26%	-8.94%	-5.18%
HDFCBANK	1743.95	11.75	0.68%	76.10	1327.03	1880.00	7.24%	1421.25	22.71%	2.20%	19.79%
HDFCLIFE	665.10	24.55	3.83%	24.71	162.30	761.20	12.62%	511.40	30.05%	2.29%	1.02%
HEROMOTOCO	3539.95	-24.70	-0.69%	6.74	238.74	6246.25	43.33%	3461.60	2.26%	-7.71%	-21.73%
HINDALCO	697.00	-0.85	-0.12%	54.63	381.14	772.65	9.79%	516.35	34.99%	15.12%	31.38%
HINDUNILVR	2198.95	-2.45	-0.11%	13.41	295.23	3035.00	27.55%	2136.00	2.95%	-5.04%	-4.28%
ICICIBANK	1316.00	6.15	0.47%	112.78	1479.22	1362.35	3.40%	1048.10	25.56%	3.95%	21.15%
INDUSINDBK	691.95	10.50	1.54%	111.19	770.33	1576.35	56.10%	606.00	14.18%	-33.48%	-53.98%
INFY	1589.10	-20.25	-1.26%	73.86	1169.38	2006.45	20.80%	1358.35	16.99%	-13.31%	0.42%
ITC	403.40	-5.70	-1.39%	128.28	518.88	528.50	23.67%	391.20	3.12%	-0.28%	-2.00%
JSWSTEEL	1031.00	12.95	1.27%	26.52	274.03	1063.00	3.01%	778.50	32.43%	5.54%	26.56%
KOTAKBANK	2021.95	-12.05	-0.59%	53.38	1084.40	2051.00	1.42%	1543.85	30.97%	4.18%	17.04%
LT	3318.00	47.30	1.45%	16.16	534.53	3963.50	16.29%	3141.00	5.64%	1.02%	-8.16%
M&M	2785.00	-6.40	-0.23%	24.39	683.87	3270.95	14.86%	1801.05	54.63%	-5.14%	50.39%
MARUTI	11615.00	-99.55	-0.85%	4.77	553.66	13680.00	15.10%	10725.00	8.30%	-7.62%	0.67%
NESTLEIND	2185.00	-17.05	-0.77%	4.23	92.47	2778.00	21.35%	2110.00	3.55%	0.28%	-14.66%
NTPC	340.60	3.25	0.96%	305.82	1042.68	448.45	24.05%	292.80	16.33%	12.32%	6.37%
ONGC	232.85	0.73	0.31%	86.25	201.16	345.00	32.51%	215.48	8.06%	0.70%	-11.27%
POWERGRID	276.70	5.90	2.18%	130.90	360.78	366.25	24.45%	247.30	11.89%	5.23%	2.23%
RELIANCE	1248.00	9.20	0.74%	161.62	2015.77	1608.80	22.43%	1156.00	7.96%	1.77%	-56.97%
SBILIFE	1487.00	29.50	2.02%	9.17	135.65	1936.00	23.19%	1307.70	13.71%	-0.54%	-2.16%
SBIN	745.05	8.35	1.13%	76.05	566.74	912.00	18.31%	680.00	9.57%	2.01%	0.79%
SHRIRAMFIN	667.40	25.10	3.91%	98.24	652.82	730.45	8.63%	438.60	52.17%	19.13%	-72.18%
SUNPHARMA	1732.65	-15.15	-0.87%	21.67	375.58	1960.35	11.62%	1377.20	25.81%	2.78%	11.24%
TATACONSUM	952.00	5.15	0.54%	16.50	156.99	1250.10	23.85%	882.90	7.83%	-7.40%	-20.23%
TATAMOTORS	681.05	1.00	0.15%	93.38	636.53	1179.00	42.23%	606.30	12.33%	-0.09%	-30.07%
TATASTEEL	158.54	3.88	2.51%	661.60	1046.06	184.60	14.12%	122.62	29.29%	15.01%	3.31%
TCS	3505.00	-47.45	-1.34%	30.51	1063.25	4592.25	23.68%	3457.00	1.39%	-9.72%	-14.45%
TECHM	1397.50	-33.15	-2.32%	55.58	779.26	1807.70	22.69%	1162.95	20.17%	-13.77%	12.42%
TITAN	3077.00	-4.70	-0.15%	7.31	224.71	3867.00	20.43%	2985.05	3.08%	-4.09%	-13.91%
TRENT	5233.00	-27.25	-0.52%	9.57	502.89	8345.00	37.29%	3843.00	36.17%	2.79%	29.21%
ULTRACEMCO	10930.00	231.90	2.17%	2.69	292.55	12145.35	10.01%	9250.00	18.16%	-5.02%	11.31%
WIPRO	265.90	4.65	1.78%	140.43	368.60	324.60	18.08%	208.50	27.53%	-15.21%	-48.79%

Disclaimer / Disclosures

ANALYST CERTIFICATION

I, Mrs. Vaishali Parekh B.com, Research Analyst, author and the name subscribed to this report, hereby certify that all of the views expressed in this research report accurately reflect our views about the subject issuer(s) or securities. We also certify that no part of our compensation was, is, or will be directly or indirectly related to the specific recommendation(s) or view(s) in this report.

Terms & conditions and other disclosures:

Prabhudas Lilladher Pvt. Ltd, Mumbai, India (hereinafter referred to as "PL") is engaged in the business of Stock Broking, Portfolio Manager, Depository Participant and distribution for third party financial products. PL is a subsidiary of Prabhudas Lilladher Advisory Services Pvt Ltd. which has its various subsidiaries engaged in business of commodity broking, investment banking, financial services (margin funding) and distribution of third party financial/other products, details in respect of which are available at www.plindia.com

This document has been prepared by the Research Division of PL and is meant for use by the recipient only as information and is not for circulation. This document is not to be reported or copied or made available to others without prior permission of PL. It should not be considered or taken as an offer to sell or a solicitation to buy or sell any security.

The information contained in this report has been obtained from sources that are considered to be reliable. However, PL has not independently verified the accuracy or completeness of the same. Neither PL nor any of its affiliates, its directors or its employees accepts any responsibility of whatsoever nature for the information, statements and opinion given, made available or expressed herein or for any omission therein.

Recipients of this report should be aware that past performance is not necessarily a guide to future performance and value of investments can go down as well. The suitability or otherwise of any investments will depend upon the recipient's particular circumstances and, in case of doubt, advice should be sought from an independent expert/advisor.

Either PL or its affiliates or its directors or its employees or its representatives or its clients or their relatives may have position(s), make market, act as principal or engage in transactions of securities of companies referred to in this report and they may have used the research material prior to publication.

PL may from time to time solicit or perform investment banking or other services for any company mentioned in this document.

PL is registered as Research Analyst under Securities and Exchange Board of India (Research Analysts) Regulations, 2014 PL submits that no material disciplinary action has been taken on us by any Regulatory Authority impacting Equity Research Analysis activities.

PL or its research analysts or its associates or his relatives do not have any financial interest in the subject company.

PL or its research analysts or its associates or his relatives do not have actual/beneficial ownership of one per cent or more securities of the subject company at the end of the month immediately preceding the date of publication of the research report.

PL or its research analysts or its associates or his relatives do not have any material conflict of interest at the time of publication of the research report.

PL or its associates might have received compensation from the subject company in the past twelve months.

PL or its associates might have managed or co-managed public offering of securities for the subject company in the past twelve months or mandated by the subject company for any other assignment in the past twelve months.

PL or its associates might have received any compensation for investment banking or merchant banking or brokerage services from the subject company in the past twelve months.

PL or its associates might have received any compensation for products or services other than investment banking or merchant banking or brokerage services from the subject company in the past twelve months PL or its associates might have received any compensation or other benefits from the subject company or third party in connection with the research report.

PL encourages independence in research report preparation and strives to minimize conflict in preparation of research report. PL or its analysts did not receive any compensation or other benefits from the subject Company or third party in connection with the preparation of the research report. PL or its Research Analysts do not have any material conflict of interest at the time of publication of this report.

It is confirmed that Mrs. Vaishali Parekh B.com, Research Analyst of this report has not received any compensation from the companies mentioned in the report in the preceding twelve months compensation of our Research Analysts is not based on any specific merchant banking, investment banking or brokerage service transactions.

The Research analysts for this report certifies that all of the views expressed in this report accurately reflect his or her personal views about the subject company or companies and its or their securities, and no part of his or her compensation was, is or will be, directly or indirectly related to specific recommendations or views expressed in this report.

The research analysts for this report has not served as an officer, director or employee of the subject company PL or its research analysts have not engaged in market making activity for the subject company

Our sales people, traders, and other professionals or affiliates may provide oral or written market commentary or trading strategies to our clients that reflect opinions that are contrary to the opinions expressed herein, and our proprietary trading and investing businesses may make investment decisions that are inconsistent with the recommendations expressed herein. In reviewing these materials, you should be aware that any or all of the foregoing, among other things, may give rise to real or potential conflicts of interest.

PL and its associates, their directors and employees may (a) from time to time, have a long or short position in, and buy or sell the securities of the subject company or (b) be engaged in any other transaction involving such securities and earn brokerage or other compensation or act as a market maker in the financial instruments of the subject company or act as an advisor or lender/borrower to the subject company or may have any other potential conflict of interests with respect to any recommendation and other related information and opinions.