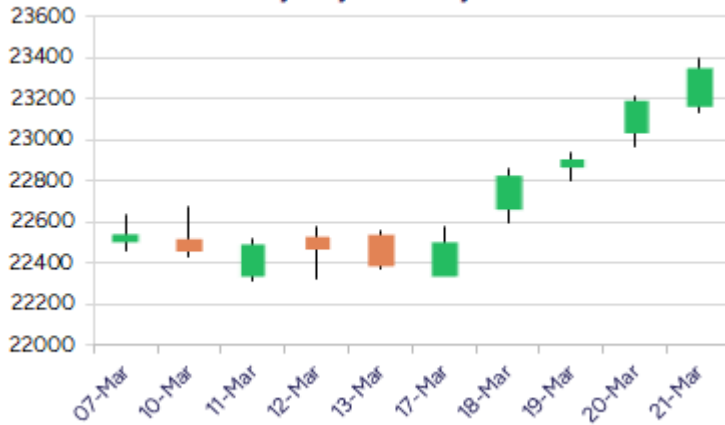


\* Sensex 76905.51 + 557.45

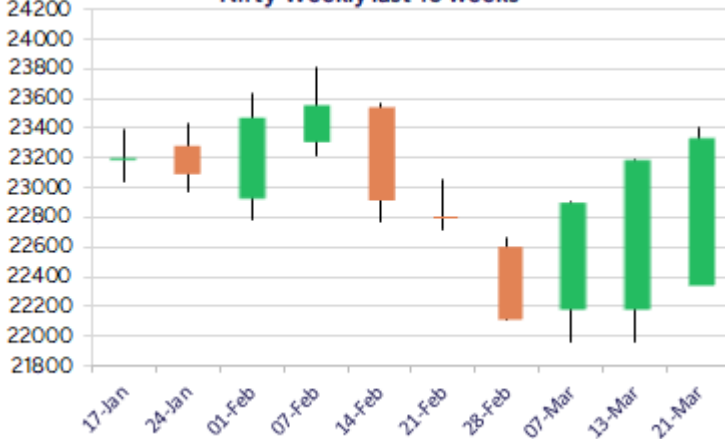
\* Nifty 23350.40 + 159.75

\* Bank Nifty 50593.55 + 530.70

Nifty daily last 10 days



Nifty Weekly last 10 weeks



\*Blue candle → Close rate > Open rate \* Red candle → Close rate < Open rate

## Market Preview

### Nifty ends week on a strong note above 23300 zone

Nifty has witnessed a strong robust move during the week to improve the sentiment and bias significantly closing on a strong note above 23300 level. BankNifty has continued with the gains and has reached the 50600 zone with conviction expecting for further rise. The market breadth has been strong with the advance decline indicating a ratio of 4:1 at close.

## Market Forecast

### Nifty daily range 23200-23500

Nifty, gave a strong close ending the week on a high note after six months touching the 23400 zone during the intraday sessions improving the bias and sentiment overall. As mentioned earlier, with the support now positioned near 23000 zone, the index is anticipated to carry on with the positive move with targets of 23800 and 24200 levels expected along with the broader markets also actively participating and expecting further gains in the coming sessions.

BankNifty, has gained strength retesting the previous peak of 50600 zone and has improved the bias anticipating for further upward move in the coming sessions. The index would have now 49800 level as the near-term support and on the upside, once a decisive breach above the important 200 period MA at 50960 level is breached, can trigger for further rise for next targets of 52000 and 53600 levels.

The support for the day is seen at 23200 levels while the resistance is seen at 23500 levels. BankNifty would have the daily range of 50300-51200 levels.

Indices	Period	Closing	% Chng	Trend	Reversal	2 Sup	1 Sup	Pivot	1 Res	2 Res
Nifty	Daily	23350.40	0.69%	12	22863.55	23025	23188	23295	23458	23565
	Weekly	23350.40	4.26%	1	22351.75	21986	22668	23035	23718	24085
	Monthly	23508.40	-0.58%	-5	26264.60	22068	22788	23507	24228	24947
Bank Nifty	Daily	50593.55	1.06%	5	49386.60	49606	50100	50386	50880	51166
	Weekly	50593.55	5.27%	1	48540.25	47345	48969	49821	51445	52297
	Monthly	49587.20	-2.50%	-5	52793.25	45873	47730	49701	51559	53530
Sensex	Daily	76905.51	0.73%	12	75216.70	75734	76320	76681	77267	77628
	Weekly	76905.51	4.17%	1	73919.90	72669	74787	75915	78033	79160
	Monthly	77500.57	-0.82%	-5	85764.50	72808	75154	77614	79960	82419

## Daily Trend turned Up

Scrip Name	LCP	Curr Trnd	Reversal
INDIACEM	279.6	-7	273.95
LALPATHLAB	2533.85	-1	2528
SRF	3024.35	-1	3001.75
TECHMAHINDRA	1409.25	-6	1408.75

## Daily Trend turned Down

Scrip Name	LCP	Curr Trnd	Reversal
BERGEPAIN	500.3	1	500.9
COLPAL	2401.1	3	2405.5
HAVELLS	1480.8	11	1489.65
HINDALCO	695.35	1	702
JINDALSTEL	914.3	3	918
NATIONALUM	185.52	1	188.15
POLYCAB	4992.3	11	5004.05
TATASTEEL	157.28	12	157.25
UJJIVAN	35.62	2	35.6
VOLTAS	1429.5	4	1467.2

\* Trends turned Up after a significant period

\* Trends turned Down after a significant period

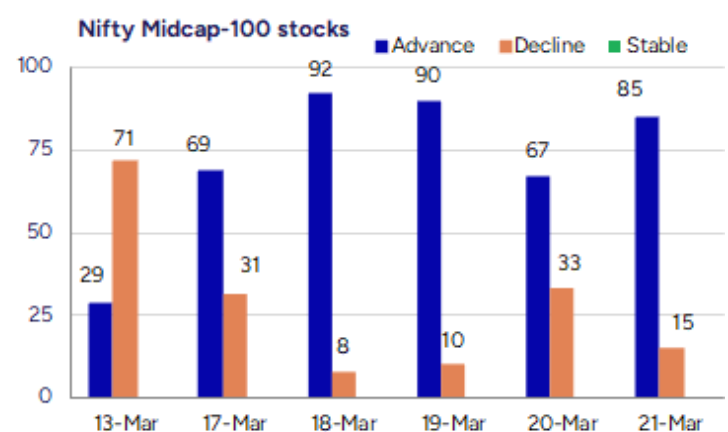
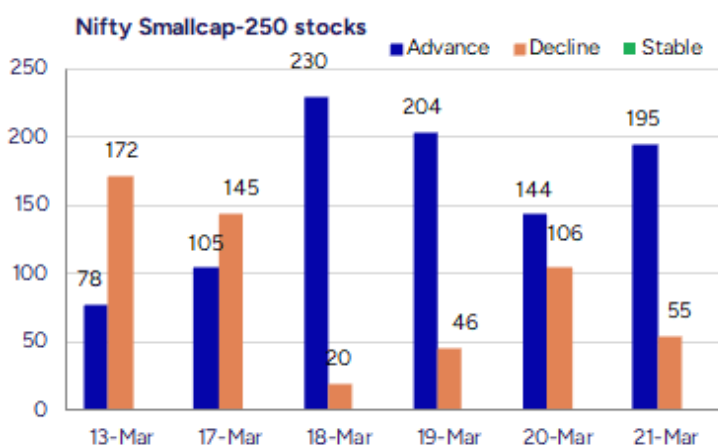
## Gainers - Losers ( Nifty 500 Stocks )

## Gainers

Scrip Name	LCP	% Change	Volume
AION-TECH	57.57	19.99	151172
Balu Forge Indu	601.75	19.83	4640632
Valor Estate	151.61	19.38	24091083
Network People	2277.55	16.27	34700
SML Isuzu	1651.9	15.44	396192
MRPL	135.53	14.97	32572658
Arihant Academy	298.8	14.92	9600

## Losers

Scrip Name	LCP	% Change	Volume
Boss Packaging	41	-8.89	8000
Rockingdeals	259.2	-7.28	263500
Salona Cotspin	240.69	-7.14	8287
Neelam Linens	21.3	-6.99	570000
Aurionpro Solut	1417.2	-6.98	172356
Proventus	1121.65	-6.53	2480
Greenlam Ind	274.35	-6.38	268289



### Nifty Daily chart with RSI indicator



### BankNifty Daily chart with RSI indicator



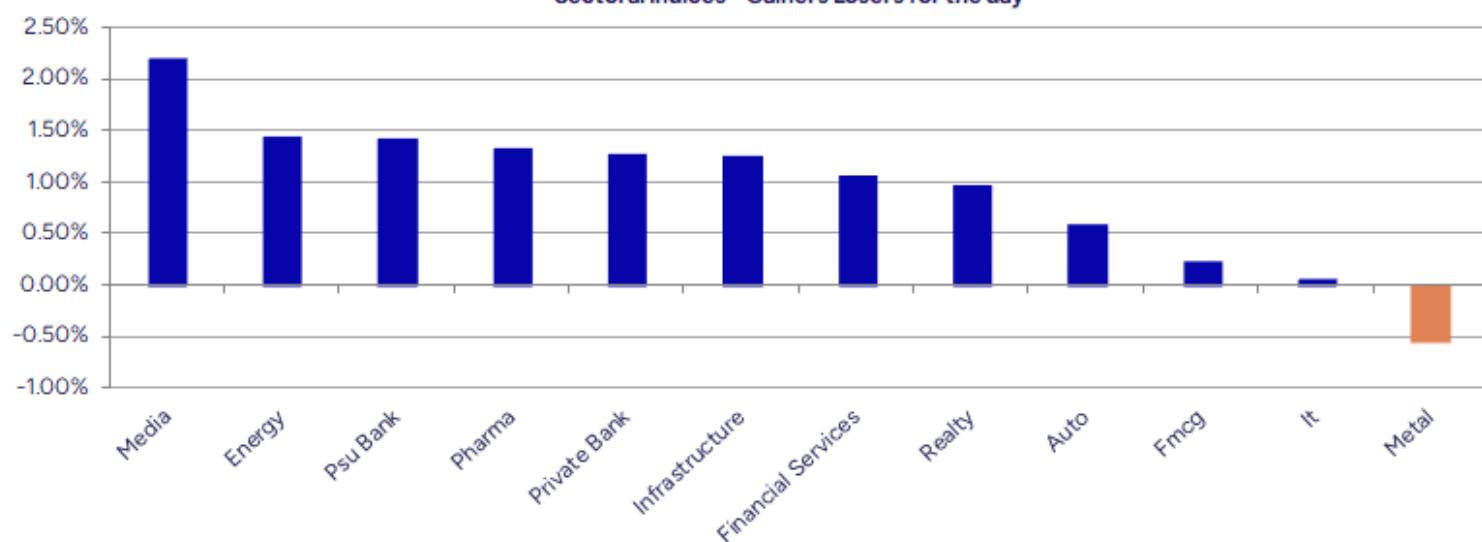
Breakouts - Cross above 200 DMA			
Company Name	LCP	Change %	200 DMA
IKIO Lighting	292.92	10.39	265.35
Unichem Labs	709.7	6.04	669.27
Sundaram	322.48	5.67	305.19
PCBL Chemical	423.05	5.60	400.61
Ganesh Housing	1117.5	5.36	1060.66
DCM Shriram	1131.3	5.27	1074.68
Va Tech Wabag	1513.25	4.19	1452.37
Nuvama Wealth	6344.55	4.18	6089.9
Home First	1103.15	3.88	1061.97
Somi Conveyor	181.69	3.79	175.06
Magson Retail	99.75	3.50	96.38
Gujarat Apollo	326.1	3.46	315.2
Reliance Power	37.82	3.11	36.68
NLC India	257.49	3.08	249.79
SBFC Finance	87.98	2.70	85.67
Medicamen Bio	492.6	2.35	481.28
JSW Infra	312.8	2.28	305.82
Emami Realty	107.45	220.00%	105.14

\* Stocks crossing above its Simple Moving Average (200DMA)

Breakdown - Cross below 200 DMA			
Company Name	LCP	Change %	200 DMA
GeeCee Ventures	387.65	-2.63	398.11
EPack Durables	358.4	-2.47	367.46
Crop Life Sci.	48.35	-1.57	49.12
Vasa Denticity	623.15	-1.25	631.06
Garden Reach Sh	1701.6	-1.09	1720.36
Dodla	1148.3	-0.87	1158.41
Greenlam Ind	274.35	-0.80	276.56
Aadhar Housing	417.45	-0.75	420.59
Avro India	159.97	-0.68	161.06
HF	555.55	-0.39	557.7
Borosil Renew	507.35	-0.26	508.66
ABSLLIQUID	999.99	0.00	1000

\* Stocks crossing below its Simple Moving Average (200DMA)

Sectoral Indices - Gainers Losers for the day



Stocks witnessing a volume surge as compared to their 5 day average volume

Watch out for the stocks that have seen a huge spurt in its share price over the last three days

Volume Shockers - NSE					
Company name	LCP	% Chg	Volume	Avg Vol *	% Chg
Jupiter Wagons	347.45	<b>10.83</b>	31510104	766784	4009
Redington	248.7	<b>9.34</b>	37030977	939548	3841
Krishival Foods	224	<b>-0.88</b>	45500	1200	3692
Tejas Networks	799.4	<b>12.51</b>	16442402	434698	3682
Oneclick Logi.	152.55	<b>-0.46</b>	158400	4320	3567
BEW Engineering	153	<b>2.34</b>	33500	1125	2878
Jindal Drilling	926.4	<b>-0.95</b>	988136	34855	2735
SML Isuzu	1624.2	<b>13.5</b>	313762	12295	2452
Nuvoco Vistas	324.7	<b>6.53</b>	2409255	105255	2189
Vibhor Steel	179.86	<b>-3.81</b>	315487	14451	2083
Praxis Home Ret	11.17	<b>2.76</b>	1347246	62438	2058
CreditAccess Gr	1017	<b>4.68</b>	4035692	198052	1938
Cello World	579.85	<b>6.49</b>	1631339	82395	1880
Transformers	486.65	<b>9.9</b>	2512979	131705	1808
KEI Industries	2889.4	<b>1.7</b>	2688204	145420	1749
Manappuram Fin	235.15	<b>8.11</b>	137223078	7684292	1686
Sunrest	58.4	<b>12.31</b>	40000	2240	1686
Sky Gold	334.5	<b>2.95</b>	443936	25989	1608
Newgen Software	1034.4	<b>7.51</b>	1811041	114472	1482
Krishna Institu	610	<b>3.12</b>	935621	59456	1474

\* the Average Volume of last 5 days

Price Shockers - NSE				
Company name	LCP	3 days *	% Chg	Volume
SML Isuzu	1651.9	1145.25	<b>44.24</b>	396195
Vibhor Steel	181.57	129.86	<b>39.82</b>	348035
Manugraph Ind	19.86	14.66	<b>35.47</b>	538065
Interiors Mor	390	300.05	<b>29.98</b>	8400
Balu Forge Indu	601.75	464.35	<b>29.59</b>	4640746
Sanginita Chemi	12.36	9.55	<b>29.42</b>	1141791
Krishna Defence	692.75	546.6	<b>26.74</b>	100500
Garden Reach Sh	1701.6	1367.8	<b>24.4</b>	2377074
Inspire Films	24.75	19.9	<b>24.37</b>	16000
Crown Lifters	188.04	151.2	<b>24.37</b>	50231
Arman Financial	1433	1152.35	<b>24.35</b>	382597
Valor Estate	151.61	122.43	<b>23.83</b>	24093370
Medicamen Bio	492.6	402.65	<b>22.34</b>	106982
Rajesh Exports	187.22	155.1	<b>20.71</b>	5440271
AION-TECH	57.57	47.7	<b>20.69</b>	151472
Signet Ind	50.03	41.58	<b>20.32</b>	109516
Summit Sec	1986.9	1654.25	<b>20.11</b>	36561
GPT Infra	112.26	93.47	<b>20.1</b>	899323
Pilani Invest	4347.85	3620.8	<b>20.08</b>	28911
Shera Energy	163.2	137	<b>19.12</b>	44000

\* the % price rise of the last 3 days



Nifty 50 stocks - Summary Details											
Symbol	LTP	Chng	% Chng	Volume (lacs)	Turnover (crs.)	52w High	Diff with 52w H	52w Low	Diff with 52w L	365 days % chng	30 days % chng
NIFTY 50	23350.40	159.75	0.69%	5409.66	51005.37	26277.35	11.14%	21281.45	9.72%	1.07%	6.19%
ADANIENT	2365.00	25.70	1.10%	11.01	260.57	3743.90	36.83%	2025.00	16.79%	5.36%	-23.34%
ADANIPTS	1189.00	11.55	0.98%	31.27	372.01	1621.40	26.67%	995.65	19.42%	8.51%	-5.46%
APOLLOHOSP	6615.00	140.65	2.17%	4.97	327.04	7545.35	12.33%	5693.20	16.19%	1.53%	4.86%
ASIANPAINT	2301.10	13.90	0.61%	16.24	373.91	3394.90	32.22%	2124.75	8.30%	2.22%	-19.03%
AXISBANK	1075.55	21.20	2.01%	68.49	730.45	1339.65	19.71%	933.50	15.22%	6.06%	1.89%
BAJAJ-AUTO	8080.00	160.00	2.02%	7.03	567.52	12774.00	36.75%	7301.00	10.67%	-6.23%	-8.29%
BAJAJFINSV	1842.00	-9.85	-0.53%	35.37	652.32	2029.90	9.26%	1419.05	29.81%	-2.21%	16.86%
BAJFINANCE	8911.10	231.45	2.67%	27.45	2450.81	9089.00	1.96%	6375.70	39.77%	2.52%	30.53%
BEL	296.00	-1.05	-0.35%	417.52	1237.68	340.50	13.07%	182.50	62.19%	21.44%	58.47%
BHARTIARTL	1721.85	16.60	0.97%	147.15	2525.65	1779.00	3.21%	1183.10	45.54%	2.18%	38.44%
BPCL	279.11	6.98	2.56%	261.73	730.45	376.00	25.77%	234.01	19.27%	7.67%	-51.98%
BRITANNIA	4818.20	-12.90	-0.27%	3.04	146.60	6469.90	25.53%	4506.00	6.93%	-1.23%	0.59%
CIPLA	1515.75	3.70	0.24%	28.47	433.60	1702.05	10.95%	1317.25	15.07%	2.02%	6.68%
COALINDIA	405.85	9.45	2.38%	165.64	672.71	543.55	25.33%	349.25	16.21%	9.78%	-5.51%
DRREDDY	1202.25	15.05	1.27%	23.14	276.53	1421.49	15.42%	1092.45	10.05%	-0.85%	-80.55%
EICHERMOT	5315.05	85.70	1.64%	4.15	219.53	5575.50	4.67%	3821.00	39.10%	10.81%	35.00%
GRASIM	2478.65	10.50	0.43%	13.72	339.78	2877.75	13.87%	2131.00	16.31%	0.20%	13.87%
HCLTECH	1565.00	3.00	0.19%	81.09	1271.22	2012.20	22.22%	1235.00	26.72%	-9.48%	-1.58%
HDFCBANK	1772.50	3.75	0.21%	167.54	2960.40	1880.00	5.72%	1421.25	24.71%	2.65%	23.60%
HDFCLIFE	680.95	6.60	0.98%	37.25	251.85	761.20	10.54%	511.40	33.15%	8.95%	7.65%
HEROMOTOCO	3633.00	35.85	1.00%	11.96	436.34	6246.25	41.84%	3461.60	4.95%	-6.34%	-20.25%
HINDALCO	697.00	-8.95	-1.27%	75.96	531.65	772.65	9.79%	516.35	34.99%	15.46%	33.74%
HINDUNILVR	2247.50	5.10	0.23%	21.52	483.06	3035.00	25.95%	2136.00	5.22%	-2.33%	0.02%
ICICIBANK	1337.95	16.25	1.23%	604.94	8115.80	1362.35	1.79%	1048.10	27.65%	6.33%	21.87%
INDUSINDBK	689.00	4.90	0.72%	142.65	974.43	1576.35	56.29%	606.00	13.70%	-33.20%	-52.54%
INFY	1595.40	-20.15	-1.25%	100.75	1603.22	2006.45	20.49%	1358.35	17.45%	-12.76%	3.90%
ITC	406.50	2.55	0.63%	253.02	1022.46	528.50	23.08%	391.20	3.91%	-0.32%	-2.83%
JSWSTEEL	1060.45	10.20	0.97%	26.30	278.16	1063.00	0.24%	789.30	34.35%	7.30%	32.17%
KOTAKBANK	2073.95	38.30	1.88%	188.51	3915.11	2097.60	1.13%	1543.85	34.34%	3.68%	15.31%
LT	3415.05	64.00	1.91%	30.42	1039.21	3963.50	13.84%	3141.00	8.72%	4.07%	-4.52%
M&M	2787.20	-40.90	-1.45%	38.24	1083.76	3270.95	14.79%	1820.55	53.10%	1.36%	53.33%
MARUTI	11769.20	39.00	0.33%	5.61	661.77	13680.00	13.97%	10725.00	9.74%	-8.26%	-1.77%
NESTLEIND	2266.30	44.75	2.01%	7.93	179.33	2778.00	18.42%	2110.00	7.41%	-0.04%	-12.89%
NTPC	353.00	11.25	3.29%	364.07	1269.22	448.45	21.28%	292.80	20.56%	9.82%	8.96%
ONGC	242.00	6.41	2.72%	292.85	710.29	345.00	29.86%	215.48	12.31%	-0.43%	-10.71%
POWERGRID	284.05	3.70	1.32%	260.04	736.11	366.25	22.44%	247.30	14.86%	5.02%	5.93%
RELIANCE	1277.50	8.35	0.66%	217.81	2779.94	1608.80	20.59%	1156.00	10.51%	3.57%	-56.05%
SBILIFE	1549.75	51.40	3.43%	19.77	303.05	1936.00	19.95%	1307.70	18.51%	1.56%	2.74%
SBIN	754.50	4.95	0.66%	95.77	720.45	912.00	17.27%	680.00	10.96%	3.27%	1.81%
SHRIRAMFIN	676.10	8.20	1.23%	63.65	428.68	730.45	7.44%	438.60	54.15%	20.70%	-71.14%
SUNPHARMA	1790.00	39.75	2.27%	24.83	442.12	1960.35	8.69%	1377.20	29.97%	2.86%	12.97%
TATACONSUM	964.00	-1.85	-0.19%	31.56	304.29	1250.10	22.89%	882.90	9.19%	-5.95%	-14.07%
TATAMOTORS	702.50	12.45	1.80%	148.23	1037.48	1179.00	40.42%	606.30	15.87%	1.12%	-26.63%
TATASTEEL	157.08	-1.96	-1.23%	491.85	776.92	184.60	14.91%	122.62	28.10%	18.21%	9.19%
TCS	3578.00	14.85	0.42%	41.62	1482.34	4592.25	22.09%	3457.00	3.50%	-8.01%	-10.27%
TECHM	1410.00	-0.55	-0.04%	40.56	573.11	1807.70	22.00%	1162.95	21.24%	-17.27%	11.57%
TITAN	3166.75	-26.35	-0.83%	11.82	374.48	3867.00	18.11%	2985.05	6.09%	-0.89%	-11.07%
TRENT	5138.00	-83.55	-1.60%	11.98	620.03	8345.00	38.43%	3843.00	33.70%	4.48%	31.69%
ULTRACEMCO	10985.05	36.90	0.34%	6.57	720.26	12145.35	9.55%	9250.00	18.76%	-3.19%	15.43%
WIPRO	264.30	-3.70	-1.38%	226.59	601.62	324.60	18.58%	208.50	26.76%	-14.16%	-45.69%

## Disclaimer / Disclosures

### ANALYST CERTIFICATION

I, Mrs. Vaishali Parekh B.com, Research Analyst, author and the name subscribed to this report, hereby certify that all of the views expressed in this research report accurately reflect our views about the subject issuer(s) or securities. We also certify that no part of our compensation was, is, or will be directly or indirectly related to the specific recommendation(s) or view(s) in this report.

Terms & conditions and other disclosures:

Prabhudas Lilladher Pvt. Ltd, Mumbai, India (hereinafter referred to as "PL") is engaged in the business of Stock Broking, Portfolio Manager, Depository Participant and distribution for third party financial products. PL is a subsidiary of Prabhudas Lilladher Advisory Services Pvt Ltd. which has its various subsidiaries engaged in business of commodity broking, investment banking, financial services (margin funding) and distribution of third party financial/other products, details in respect of which are available at [www.plindia.com](http://www.plindia.com)

This document has been prepared by the Research Division of PL and is meant for use by the recipient only as information and is not for circulation. This document is not to be reported or copied or made available to others without prior permission of PL. It should not be considered or taken as an offer to sell or a solicitation to buy or sell any security.

The information contained in this report has been obtained from sources that are considered to be reliable. However, PL has not independently verified the accuracy or completeness of the same. Neither PL nor any of its affiliates, its directors or its employees accepts any responsibility of whatsoever nature for the information, statements and opinion given, made available or expressed herein or for any omission therein.

Recipients of this report should be aware that past performance is not necessarily a guide to future performance and value of investments can go down as well. The suitability or otherwise of any investments will depend upon the recipient's particular circumstances and, in case of doubt, advice should be sought from an independent expert/advisor.

Either PL or its affiliates or its directors or its employees or its representatives or its clients or their relatives may have position(s), make market, act as principal or engage in transactions of securities of companies referred to in this report and they may have used the research material prior to publication.

PL may from time to time solicit or perform investment banking or other services for any company mentioned in this document.

PL is registered as Research Analyst under Securities and Exchange Board of India (Research Analysts) Regulations, 2014 PL submits that no material disciplinary action has been taken on us by any Regulatory Authority impacting Equity Research Analysis activities.

PL or its research analysts or its associates or his relatives do not have any financial interest in the subject company.

PL or its research analysts or its associates or his relatives do not have actual/beneficial ownership of one per cent or more securities of the subject company at the end of the month immediately preceding the date of publication of the research report.

PL or its research analysts or its associates or his relatives do not have any material conflict of interest at the time of publication of the research report.

PL or its associates might have received compensation from the subject company in the past twelve months.

PL or its associates might have managed or co-managed public offering of securities for the subject company in the past twelve months or mandated by the subject company for any other assignment in the past twelve months.

PL or its associates might have received any compensation for investment banking or merchant banking or brokerage services from the subject company in the past twelve months.

PL or its associates might have received any compensation for products or services other than investment banking or merchant banking or brokerage services from the subject company in the past twelve months PL or its associates might have received any compensation or other benefits from the subject company or third party in connection with the research report.

PL encourages independence in research report preparation and strives to minimize conflict in preparation of research report. PL or its analysts did not receive any compensation or other benefits from the subject Company or third party in connection with the preparation of the research report. PL or its Research Analysts do not have any material conflict of interest at the time of publication of this report.

It is confirmed that Mrs.Vaishali Parekh B.com, Research Analyst of this report has not received any compensation from the companies mentioned in the report in the preceding twelve months compensation of our Research Analysts is not based on any specific merchant banking, investment banking or brokerage service transactions.

The Research analysts for this report certifies that all of the views expressed in this report accurately reflect his or her personal views about the subject company or companies and its or their securities, and no part of his or her compensation was, is or will be, directly or indirectly related to specific recommendations or views expressed in this report.

The research analysts for this report has not served as an officer, director or employee of the subject company PL or its research analysts have not engaged in market making activity for the subject company

Our sales people, traders, and other professionals or affiliates may provide oral or written market commentary or trading strategies to our clients that reflect opinions that are contrary to the opinions expressed herein, and our proprietary trading and investing businesses may make investment decisions that are inconsistent with the recommendations expressed herein. In reviewing these materials, you should be aware that any or all of the foregoing, among other things, may give rise to real or potential conflicts of interest.

PL and its associates, their directors and employees may (a) from time to time, have a long or short position in, and buy or sell the securities of the subject company or (b) be engaged in any other transaction involving such securities and earn brokerage or other compensation or act as a market maker in the financial instruments of the subject company or act as an advisor or lender/borrower to the subject company or may have any other potential conflict of interests with respect to any recommendation and other related information and opinions.

**Regd. Office:** 3<sup>rd</sup> Floor, Sadhana House, 570, P. B. Marg, Behind Mahindra Tower, Worli, Mumbai - 400 018, India.