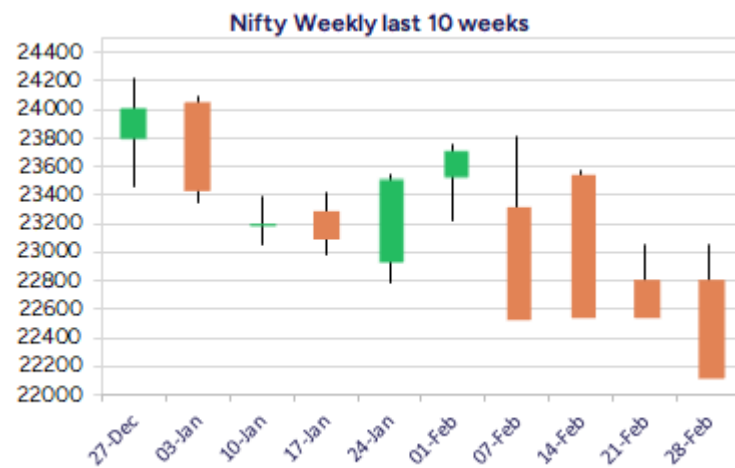
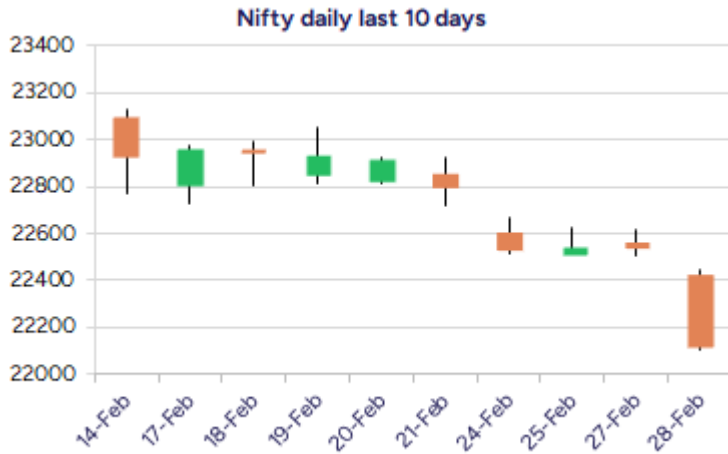


* Sensex 73198.10 -1414.33

* Nifty 22124.70 -420.35

* Bank Nifty 48344.70 -399.10



*Blue candle → Close rate > Open rate * Red candle → Close rate < Open rate

Market Preview

Nifty tanks below 22500 zone; bias turns bearish

Nifty tanks heavily breaching below the important 22500 zone turning the bias and sentiment very weak with further slide expected to continue. BankNifty has the important support near 47900 zone which needs to be sustained. The advance decline ratio was very weak indicating a ratio of almost 1:4 at close.

Market Forecast

Nifty daily range 22000-22400

Nifty tanks with heavy profit booking witnessed after the huge gap down opening below the 22500 zone and has decisively breached below the 22300 zone with a huge bearish candle on the daily chart with sentiment and bias precariously placed. The index has weakened the trend overall with downside targets now open with next major support zone positioned near 21200 level of the base of the descending channel.

BankNifty breached below the 48500 zone with profit booking seen but showed some resilience as compared to Nifty index with major and crucial support lying near the 47900 zone. The bias overall is maintained with a very cautious approach and a decisive move below 47900 level would open the gates for further slide with targets of 46800 and 46100 levels expected. The support for the day is seen at 22000 levels while the resistance is seen at 22400 levels. BankNifty would have the daily range of 48000-49000 levels.

Indices	Period	Closing	% Chng	Trend	Reversal	2 Sup	1 Sup	Pivot	1 Res	2 Res
Nifty	Daily	22124.70	-1.86%	-14	22339.45	21882	22003	22227	22348	22572
	Weekly	22124.70	-2.94%	-3	22686.90	21736	21930	22299	22494	22862
	Monthly	23508.40	-0.58%	-5	26264.60	22068	22788	23507	24228	24947
Bank Nifty	Daily	48344.70	-0.82%	-5	48681.80	47837	48091	48333	48587	48828
	Weekly	48344.70	-1.30%	-3	48721.55	47571	47958	48465	48852	49359
	Monthly	49587.20	-2.50%	-5	52793.25	45873	47730	49701	51559	53530
Sensex	Daily	73198.10	-1.90%	-14	73905.00	72424	72811	73547	73934	74670
	Weekly	73198.10	-2.81%	-3	75057.20	71983	72591	73749	74356	75515
	Monthly	77500.57	-0.82%	-5	85764.50	72808	75154	77614	79960	82419

Daily Trend turned Down

Scrip Name	LCP	Curr Trnd	Reversal
ASTRAL	1337.25	8	1378.45
BALKRISIND	2615.65	8	2684.35
BEL	246.25	6	253
BERGEPAIN	488.55	8	500.4
BIRLACORPN	972.6	5	984.3
BOSCH	26544	7	26829.25
CASTROLIND	212.63	5	216.35
CESC	130.79	8	133.25
CHAMBLFERT	533.7	2	563.55
DEEPAKNTR	1851.3	5	1885.1
EICHERMOT	4773.6	6	4892.7
GODREJCP	1005.15	5	1033.65

* Trends turned Down after a significant period

Daily Trend turned Down

Scrip Name	LCP	Curr Trnd	Reversal
GREENPLY	272.6	6	277.55
IGL	189.48	8	192.9
CUMMINS	2717.95	5	2772.5
MAITHANALL	869.1	6	890.95
MANAPPURAM	200.96	6	204.2
MCDOWELLCOM	1284.45	3	1314.3
METROPOLIS	1584.5	3	1636.3
NAM-INDIA	513.3	5	521.5
PAGEIND	40515.95	6	40989.5
RAIN	121.57	6	125.55
RBLBANK	158.34	6	159.3
THYROCARE	687.55	6	710.35

* Trends turned Down after a significant period

Gainers - Losers (Nifty 500 Stocks)

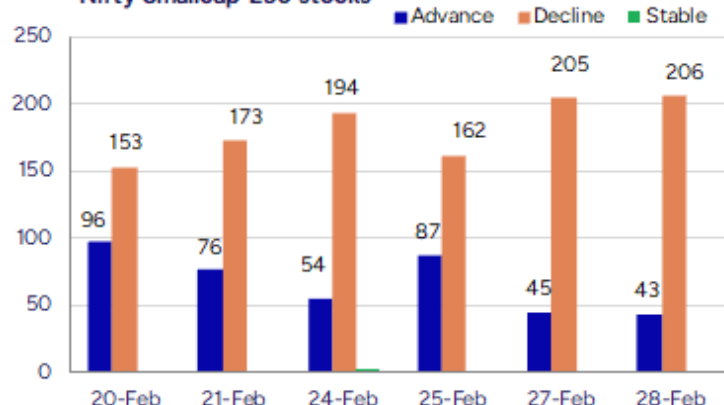
Gainers

Scrip Name	LCP	% Change	Volume
Jindal Worldwid	82.7	19.96	14146533
Medico Remedies	56.75	12.29	5496410
Home First	1018.65	10.14	10197331
Marvel Decor Lt	89.95	9.7	10000
Shrem Infra	114	9.56	25000
IKIO Lighting	221.88	8.54	1296525
Uma Exports	89.48	8.41	78593

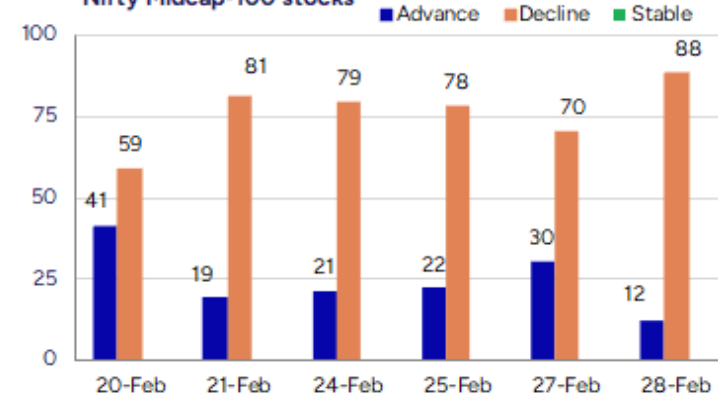
Losers

Scrip Name	LCP	% Change	Volume
Manav Infra Pro	12.5	-18.3	12000
Readymix Constr	65.8	-14.49	48000
E Factor Experi	162.75	-14.34	44000
Cyber Media	16.02	-13.59	220403
Sundaram-Clayto	1946.4	-12.88	186751
Chamunda Electr	42.7	-12.05	117000
MRO-TEK	63.81	-12.01	32594

Nifty Smallcap-250 stocks



Nifty Midcap-100 stocks



Nifty Daily chart with RSI indicator



BankNifty Daily chart with RSI indicator



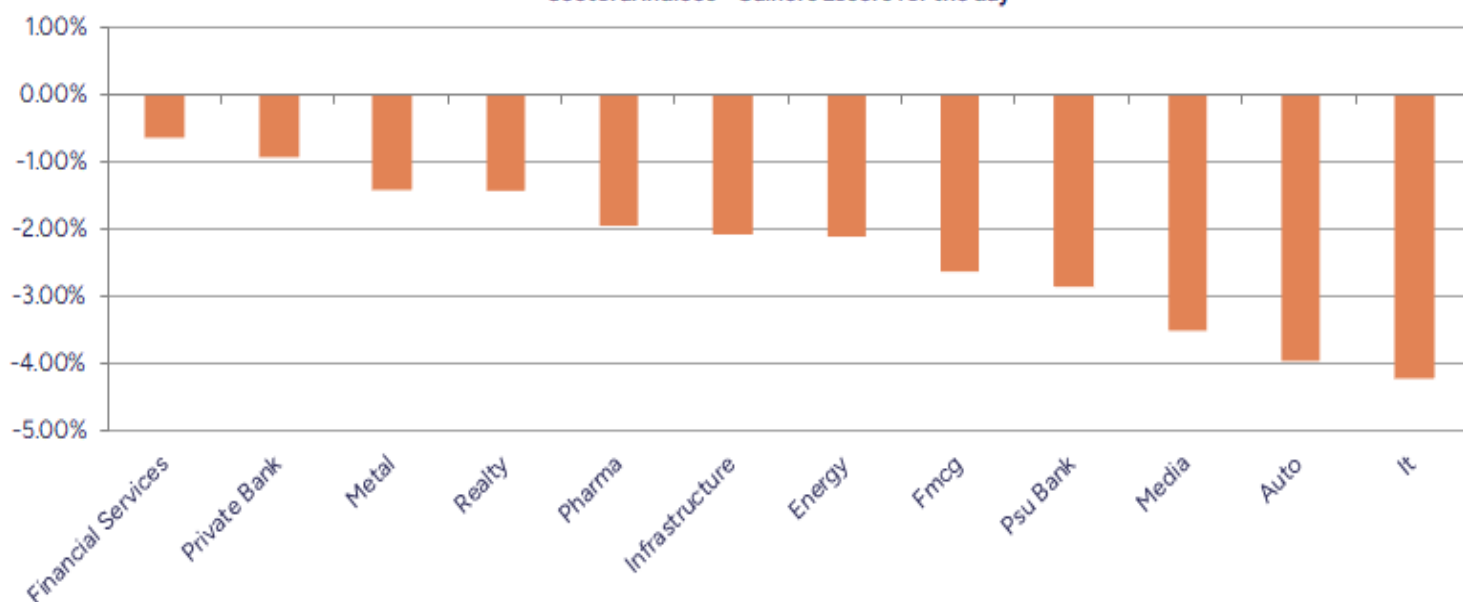
Breakouts - Cross above 200 DMA			
Company Name	LCP	Change %	200 DMA
Jindal Worldwid	82.7	15.13	71.83
KDDL	2953.5	2.70	2875.88
Five-Star Busin	761.5	2.42	743.53
Dixon Technolog	13935.85	0.81	13824.52

Breakdown - Cross below 200 DMA			
Company Name	LCP	Change %	200 DMA
Manav Infra Pro	12.5	-9.62	13.83
Twamev Construc	40.45	-8.44	44.18
Sundaram-Clayto	1946.4	-7.45	2103.12
Proventus Agro	1299.95	-5.87	1381.02
Deepak Fert	953.15	-5.83	1012.13
MCX India	4991.65	-5.58	5286.5
Super Spinning	10.16	-5.49	10.75
Authum Invest	1409.6	-5.33	1489.01
Bliss GVS	124.48	-4.98	131
Mcleod	30.99	-4.41	32.42
Stove	714.9	-4.25	746.63
Rudrabhishek En	209.05	-3.89	217.52
DOMS Industries	2406.55	-3.62	2496.81
Procter&Gamble	5034.05	-3.54	5218.75
LT Foods	339.55	-3.34	351.3
Vijaya Diagnost	915.75	-3.04	944.47
Godfrey Phillip	5189.4	-2.91	5345.03
Bannariamman	3252.3	-2.89	3348.95

* Stocks crossing above its Simple Moving Average (200DMA)

* Stocks crossing below its Simple Moving Average (200DMA)

Sectoral Indices - Gainers Losers for the day



Stocks witnessing a volume surge as compared to their 5 day average volur

Watch out for the stocks that have seen a huge spurt in its share price over the last three days

Volume Shockers - NSE					
Company name	LCP	% Chg	Volume	Avg Vol *	% Chg
KSB Pumps	617	1.39	9731214	77755	12415
Jindal Worldwid	82.7	19.96	14146543	138074	10146
Adani Green Ene	774.4	-4.6	43946460	480592	9044
CreditAccess Gr	919.1	-5.39	9601433	198052	4748
Home First	1018.65	10.14	10197375	232542	4285
KEI Industries	3070.15	2.37	5860235	145420	3930
Inox India	959	1.9	6294481	175653	3483
Varun Beverages	436.05	-2.73	48245762	1424186	3288
Oneclick Logi.	140.95	3.64	134400	4320	3011
BEW Engineering	157	-2.79	29500	1125	2522
Polycab	4713.4	0.72	6042623	236448	2456
Shriram Finance	617.3	1.73	23771127	1003099	2270
Atal	11.94	1.7	2059419	100889	1941
R R Kabel	890.25	-0.03	2193021	110125	1891
Sundaram-Clayto	1946.4	-12.88	186960	9489	1870
Medico Remedies	56.75	12.29	5496412	289862	1796
Mahindra Logist	248.3	-5.39	1242267	67500	1740
Shakti Pumps	808	-3.37	707057	38631	1730
Sanofi India	5011.55	0.5	417599	22992	1716
IndusInd Bank	990.1	-5.41	55666199	3162162	1660

* the Average Volume of last 5 days

Price Shockers - NSE					
Company name	LCP	3 days *	% Chg	Volume	
Mangalam Alloys	33.95	27.4	23.91	48000	
Aether Ind	855.35	769.6	11.14	257267	
Jindal Worldwid	82.7	74.82	10.53	14146543	
Dolphin Offshor	228.45	207.25	10.23	8254	
Madhya Pradesh	33.05	30	10.17	2000	

* the % price rise of the last 3 days

Nifty 50 stocks - Summary Details

Symbol	LTP	Chng	% Chng	Volume (lacs)	Turnover (crs.)	52w High	Diff with 52w H	52w Low	Diff with 52w L	365 days % chng	30 days % chng
NIFTY 50	22124.70	-420.35	-1.86%	5512.82	52744.65	26277.35	15.80%	21281.45	3.96%	-1.80%	2.71%
ADANIEN	2097.55	-13.40	-0.63%	23.74	497.05	3743.90	43.97%	2025.00	3.58%	-7.66%	-34.42%
ADANIPTS	1072.00	-6.95	-0.64%	28.49	304.89	1621.40	33.88%	995.65	7.67%	-0.16%	-16.97%
APOLLOHOSP	6085.00	-100.20	-1.62%	8.46	512.37	7545.35	19.35%	5693.20	6.88%	-7.81%	-2.78%
ASIANPAINT	2181.20	-32.45	-1.47%	17.01	371.90	3394.90	35.75%	2175.80	0.25%	-1.26%	-20.78%
AXISBANK	1015.60	-1.10	-0.11%	150.27	1531.93	1339.65	24.19%	933.50	8.79%	3.34%	-5.35%
BAJAJ-AUTO	7915.20	-317.15	-3.85%	5.80	465.07	12774.00	38.04%	7886.30	0.37%	-1.98%	0.53%
BAJAJFINSV	1870.20	-55.35	-2.87%	17.98	338.25	2029.90	7.87%	1419.05	31.79%	8.85%	21.52%
BAJFINANCE	8546.00	-159.40	-1.83%	17.55	1503.82	8739.00	2.21%	6187.80	38.11%	14.45%	33.96%
BEL	247.25	-5.20	-2.06%	177.55	437.83	340.50	27.39%	179.10	38.05%	-2.25%	22.76%
BHARTIARTL	1569.10	-81.30	-4.93%	136.40	2157.06	1779.00	11.80%	1099.00	42.78%	1.98%	46.21%
BPCL	238.00	-6.75	-2.76%	140.66	335.34	376.00	36.70%	236.15	0.78%	-5.15%	-59.83%
BRITANNIA	4591.90	-190.90	-3.99%	6.77	313.08	6469.90	29.03%	4553.80	0.84%	-5.49%	-2.15%
CIPLA	1405.00	-36.15	-2.51%	33.40	473.02	1702.05	17.45%	1317.25	6.66%	1.45%	-2.43%
COALINDIA	368.50	4.65	1.28%	218.99	812.93	543.55	32.20%	349.25	5.51%	-1.83%	-16.20%
DRREDDY	1115.70	-9.85	-0.88%	38.95	435.22	1421.49	21.51%	1104.55	1.01%	-4.72%	-82.49%
EICHERMOT	4803.00	-132.50	-2.68%	10.76	519.53	5575.50	13.86%	3672.00	30.80%	-3.33%	27.74%
GRASIM	2324.85	-15.10	-0.65%	11.53	267.70	2877.75	19.21%	2128.60	9.22%	-2.96%	7.04%
HCLTECH	1576.70	-52.50	-3.22%	49.10	773.14	2012.20	21.64%	1235.00	27.67%	-3.78%	-1.37%
HDFCBANK	1730.15	29.45	1.73%	272.58	4691.55	1880.00	7.97%	1397.30	23.82%	1.81%	20.67%
HDFCLIFE	609.50	-8.90	-1.44%	50.13	305.33	761.20	19.93%	511.40	19.18%	1.12%	6.51%
HEROMOTOCO	3704.00	-55.55	-1.48%	9.95	366.57	6246.25	40.70%	3662.15	1.14%	-6.63%	-14.07%
HINDALCO	634.00	2.05	0.32%	130.41	822.31	772.65	17.94%	499.00	27.05%	10.12%	25.29%
HINDUNILVR	2196.00	-48.95	-2.18%	36.83	810.17	3035.00	27.64%	2172.05	1.10%	-6.02%	-7.29%
ICICIBANK	1201.10	-21.35	-1.75%	202.15	2443.79	1362.35	11.84%	1038.50	15.66%	-1.96%	16.85%
INDUSINDBK	972.30	-74.40	-7.11%	556.67	5512.40	1576.35	38.32%	923.70	5.26%	12.05%	-27.77%
INFY	1693.00	-71.30	-4.04%	121.82	2064.29	2006.45	15.62%	1358.35	24.64%	-3.58%	5.57%
ITC	395.90	-5.70	-1.42%	319.55	1261.54	528.50	25.09%	392.20	0.94%	-7.77%	-1.64%
JSWSTEEL	954.00	-21.00	-2.15%	25.54	242.99	1063.00	10.25%	761.75	25.24%	6.42%	22.09%
KOTAKBANK	1898.45	-49.10	-2.52%	69.70	1331.13	1994.90	4.83%	1543.85	22.97%	3.17%	15.68%
LT	3170.00	-39.50	-1.23%	24.95	790.44	3963.50	20.02%	3141.00	0.92%	-5.99%	-7.51%
M&M	2595.00	-131.55	-4.82%	75.50	1966.03	3270.95	20.67%	1788.80	45.07%	-5.02%	43.38%
MARUTI	11950.00	-430.60	-3.48%	6.05	723.09	13680.00	12.65%	10725.00	11.42%	2.12%	11.01%
NESTLEIND	2196.30	-81.90	-3.59%	18.44	407.78	2778.00	20.94%	2131.25	3.05%	5.65%	-11.39%
NTPC	310.70	-5.00	-1.58%	211.27	657.63	448.45	30.72%	292.80	6.11%	-0.80%	-5.28%
ONGC	225.65	-5.35	-2.32%	172.37	388.60	345.00	34.59%	223.00	1.19%	-7.11%	-13.08%
POWERGRID	251.80	-4.45	-1.74%	385.13	966.02	366.25	31.25%	247.30	1.82%	-9.76%	-8.33%
RELIANCE	1198.00	-9.10	-0.75%	230.07	2773.76	1608.80	25.53%	1193.30	0.39%	-2.21%	-58.54%
SBILIFE	1429.65	-40.10	-2.73%	23.97	343.48	1936.00	26.15%	1307.70	9.33%	3.54%	-4.57%
SBIN	689.80	-14.10	-2.00%	157.80	1088.93	912.00	24.36%	682.60	1.05%	-6.45%	-5.20%
SHRIRAMFIN	619.00	12.20	2.01%	237.72	1459.00	730.45	15.26%	438.60	41.13%	14.47%	-74.17%
SUNPHARMA	1590.00	-57.50	-3.49%	35.50	571.22	1960.35	18.89%	1377.20	15.45%	-3.40%	4.68%
TATACONSUM	966.30	-41.70	-4.14%	50.82	492.46	1256.44	23.09%	882.90	9.45%	4.86%	-13.69%
TATAMOTORS	620.70	-27.85	-4.29%	204.77	1286.19	1179.00	47.35%	618.45	0.36%	-10.94%	-32.31%
TATASTEEL	137.16	-1.53	-1.10%	455.41	620.35	184.60	25.70%	122.62	11.86%	7.83%	-1.46%
TCS	3478.00	-134.55	-3.72%	70.85	2473.92	4592.25	24.26%	3457.00	0.61%	-10.59%	-12.29%
TECHM	1485.95	-102.30	-6.44%	41.56	624.26	1807.70	17.80%	1162.95	27.77%	-3.65%	23.52%
TITAN	3087.00	-136.10	-4.22%	13.23	410.02	3867.00	20.17%	3055.65	1.03%	-3.09%	-10.34%
TRENT	4838.65	33.35	0.69%	21.79	1047.97	8345.00	42.02%	3750.25	29.02%	-11.91%	22.43%
ULTRACEMCO	10089.25	-358.40	-3.43%	12.31	1261.09	12145.35	16.93%	9250.00	9.07%	-7.51%	6.55%
WIPRO	278.50	-16.00	-5.43%	174.59	490.24	324.60	14.20%	208.50	33.57%	-3.00%	-43.11%

Disclaimer / Disclosures

ANALYST CERTIFICATION

I, Mrs. Vaishali Parekh B.com, Research Analyst, author and the name subscribed to this report, hereby certify that all of the views expressed in this research report accurately reflect our views about the subject issuer(s) or securities. We also certify that no part of our compensation was, is, or will be directly or indirectly related to the specific recommendation(s) or view(s) in this report.

Terms & conditions and other disclosures:

Prabhudas Lilladher Pvt. Ltd, Mumbai, India (hereinafter referred to as "PL") is engaged in the business of Stock Broking, Portfolio Manager, Depository Participant and distribution for third party financial products. PL is a subsidiary of Prabhudas Lilladher Advisory Services Pvt Ltd. which has its various subsidiaries engaged in business of commodity broking, investment banking, financial services (margin funding) and distribution of third party financial/other products, details in respect of which are available at www.plindia.com

This document has been prepared by the Research Division of PL and is meant for use by the recipient only as information and is not for circulation. This document is not to be reported or copied or made available to others without prior permission of PL. It should not be considered or taken as an offer to sell or a solicitation to buy or sell any security.

The information contained in this report has been obtained from sources that are considered to be reliable. However, PL has not independently verified the accuracy or completeness of the same. Neither PL nor any of its affiliates, its directors or its employees accepts any responsibility of whatsoever nature for the information, statements and opinion given, made available or expressed herein or for any omission therein.

Recipients of this report should be aware that past performance is not necessarily a guide to future performance and value of investments can go down as well. The suitability or otherwise of any investments will depend upon the recipient's particular circumstances and, in case of doubt, advice should be sought from an independent expert/advisor.

Either PL or its affiliates or its directors or its employees or its representatives or its clients or their relatives may have position(s), make market, act as principal or engage in transactions of securities of companies referred to in this report and they may have used the research material prior to publication.

PL may from time to time solicit or perform investment banking or other services for any company mentioned in this document.

PL is registered as Research Analyst under Securities and Exchange Board of India (Research Analysts) Regulations, 2014 PL submits that no material disciplinary action has been taken on us by any Regulatory Authority impacting Equity Research Analysis activities.

PL or its research analysts or its associates or his relatives do not have any financial interest in the subject company.

PL or its research analysts or its associates or his relatives do not have actual/beneficial ownership of one per cent or more securities of the subject company at the end of the month immediately preceding the date of publication of the research report.

PL or its research analysts or its associates or his relatives do not have any material conflict of interest at the time of publication of the research report.

PL or its associates might have received compensation from the subject company in the past twelve months.

PL or its associates might have managed or co-managed public offering of securities for the subject company in the past twelve months or mandated by the subject company for any other assignment in the past twelve months.

PL or its associates might have received any compensation for investment banking or merchant banking or brokerage services from the subject company in the past twelve months.

PL or its associates might have received any compensation for products or services other than investment banking or merchant banking or brokerage services from the subject company in the past twelve months PL or its associates might have received any compensation or other benefits from the subject company or third party in connection with the research report.

PL encourages independence in research report preparation and strives to minimize conflict in preparation of research report. PL or its analysts did not receive any compensation or other benefits from the subject Company or third party in connection with the preparation of the research report. PL or its Research Analysts do not have any material conflict of interest at the time of publication of this report.

It is confirmed that Mrs.Vaishali Parekh B.com, Research Analyst of this report has not received any compensation from the companies mentioned in the report in the preceding twelve months compensation of our Research Analysts is not based on any specific merchant banking, investment banking or brokerage service transactions.

The Research analysts for this report certifies that all of the views expressed in this report accurately reflect his or her personal views about the subject company or companies and its or their securities, and no part of his or her compensation was, is or will be, directly or indirectly related to specific recommendations or views expressed in this report.

The research analysts for this report has not served as an officer, director or employee of the subject company PL or its research analysts have not engaged in market making activity for the subject company

Our sales people, traders, and other professionals or affiliates may provide oral or written market commentary or trading strategies to our clients that reflect opinions that are contrary to the opinions expressed herein, and our proprietary trading and investing businesses may make investment decisions that are inconsistent with the recommendations expressed herein. In reviewing these materials, you should be aware that any or all of the foregoing, among other things, may give rise to real or potential conflicts of interest.

PL and its associates, their directors and employees may (a) from time to time, have a long or short position in, and buy or sell the securities of the subject company or (b) be engaged in any other transaction involving such securities and earn brokerage or other compensation or act as a market maker in the financial instruments of the subject company or act as an advisor or lender/borrower to the subject company or may have any other potential conflict of interests with respect to any recommendation and other related information and opinions.