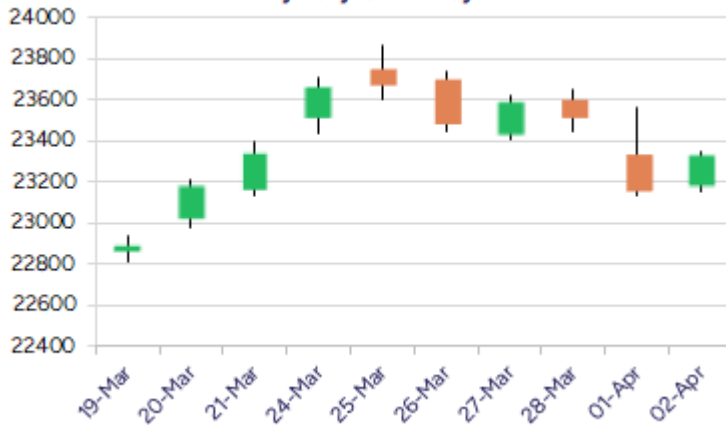


* Sensex 76617.44 + 592.93

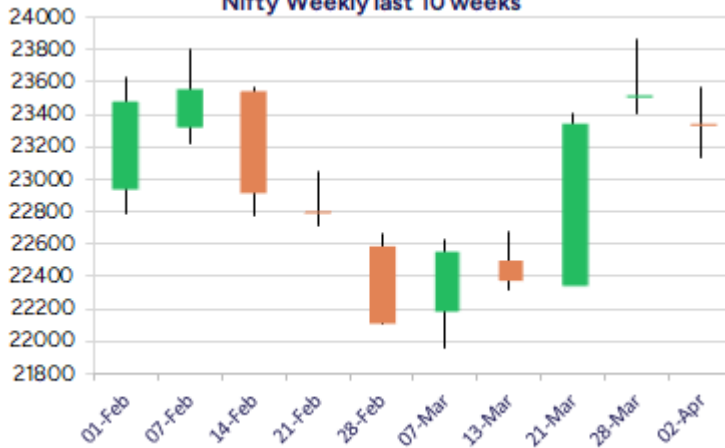
* Nifty 23332.35 + 166.65

* Bank Nifty 51348.05 + 520.55

Nifty daily last 10 days



Nifty Weekly last 10 weeks



*Blue candle → Close rate > Open rate * Red candle → Close rate < Open rate

Market Preview

Nifty recovers from 50EMA zone

Nifty witnessed a decent pullback from the important 50EMA zone at 23130 level to close on a positive note to maintain the bias intact. BankNifty also staged a decent bounce back from the 51000 zone with hopes maintained for further upward movement in the coming days. The market breadth was strong with the advance decline indicating a ratio of almost 4:1 at close.

Market Forecast

Nifty daily range 23150-23600

Nifty, has respected the important 50EMA zone of 23130 level where it has taken support during the intraday session and witnessed a decent pullback to improve the bias expecting to maintain the trend intact in the coming sessions. As mentioned earlier, the index would have psychological base near 23000 zone while the crucial support would be positioned near the 22800 level which needs to be sustained.

BankNifty, has indicated a significant recovery from the important zone of 200 period MA at 51000 level and closing near the 51350 zone has maintained the bias intact anticipating for further rise in the coming sessions. As mentioned earlier, the index would have the important near-term support of the 50EMA zone at 49750 level and on the upper side, a decisive breach above the 52000 zone shall trigger for fresh upward move in the coming days.

The support for the day is seen at 23150 levels while the resistance is seen at 23600 levels. BankNifty would have the daily range of 50800-52000 levels.

Indices	Period	Closing	% Chng	Trend	Reversal	2 Sup	1 Sup	Pivot	1 Res	2 Res
Nifty	Daily	23332.35	0.72%	-3	23720.75	23089	23211	23280	23402	23472
	Weekly	23519.35	0.72%	2	22456.20	23156	23338	23604	23785	24051
	Monthly	23519.35	0.05%	-6	25020.35	21213	22366	23118	24271	25022
Bank Nifty	Daily	51348.05	1.02%	-2	52096.70	50724	51036	51220	51532	51716
	Weekly	51564.85	1.92%	2	48907.35	50254	50910	51485	52141	52716
	Monthly	51564.85	3.99%	-6	52195.95	46118	48841	50451	53175	54785
Sensex	Daily	76617.44	0.78%	-3	78051.90	75839	76228	76454	76844	77070
	Weekly	77414.92	0.66%	2	74177.95	76094	76754	77748	78408	79402
	Monthly	77414.92	-0.11%	-6	82130.50	70156	73785	76263	79893	82371

Daily Trend turned Up

Scrip Name	LCP	Curr Trnd	Reversal
AARTIIND	400.8	-4	395.15
ARVIND	326.45	-4	322.9
BALKRISIND	2567.1	-3	2558
BERGEPAIN	505.1	-5	502
CONCOR	709.45	-2	703.3
DEEPAKNTR	2032.95	-4	2016.25
DIXON	13450.7	-5	13420.65
GODREJPROP	2146.8	-3	2136.6
IEX	177.99	-2	177.85
INDHOTEL	830.15	-4	823.45
INDIAMART	2106.7	-4	2093.35
KANSAINER	240.28	-3	238.35

* Trends turned Up after a significant period

Daily Trend turned Up

Scrip Name	LCP	Curr Trnd	Reversal
LALPATHLAB	2497.15	-6	2448
MAITHANALL	909.15	-5	901.15
MARUTI	11716.1	-3	11635.55
NAM-INDIA	593.75	-2	590.5
NHPC	83.69	-5	82.4
OIL	392.1	-4	388.5
PEL	1006.05	-2	1000.5
PETRONET	298.95	-4	297.6
SRF	2981.6	-6	2969.05
TITAN	3098.45	-2	3043.15
VIPIND	282.2	-2	281.5
VRLOG	483.85	-4	479.5

* Trends turned Up after a significant period

Gainers - Losers (Nifty 500 Stocks)

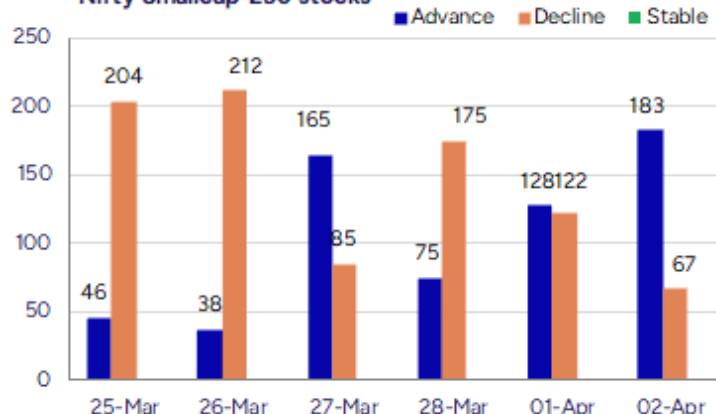
Gainers

Scrip Name	LCP	% Change	Volume
Bazaar Style	312.12	20	3392862
Hester Bio	1786.7	20	722959
Balaji Phosphat	126.85	19.67	270000
Keynote Finance	339.2	18.52	344021
Durlax Top Surf	47.6	17.82	156000
Sahaj Solar	240.45	16.82	66400
Brooks Labs	129.18	16.64	388533

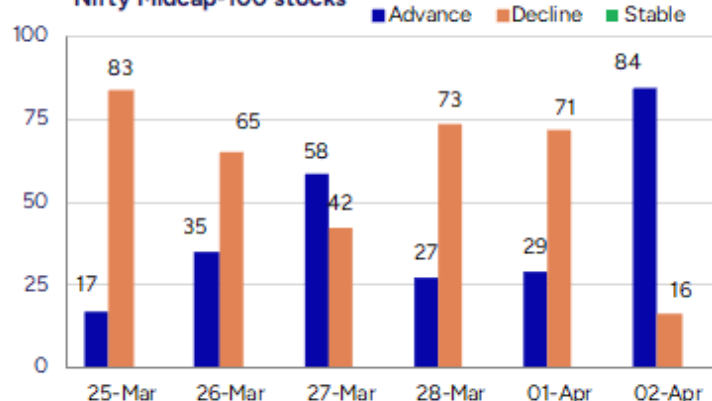
Losers

Scrip Name	LCP	% Change	Volume
Punjab and Sind	30.51	-12.48	31484276
Central Bank	36.86	-10.77	62723962
Peria Karamalai	740.2	-8.81	4517
Voler Car	83.7	-6.74	20800
Wanbury	253.6	-5.34	92135
Blue Coast	34.45	-5.02	638

Nifty Smallcap-250 stocks



Nifty Midcap-100 stocks



Nifty Daily chart with RSI indicator



BankNifty Daily chart with RSI indicator



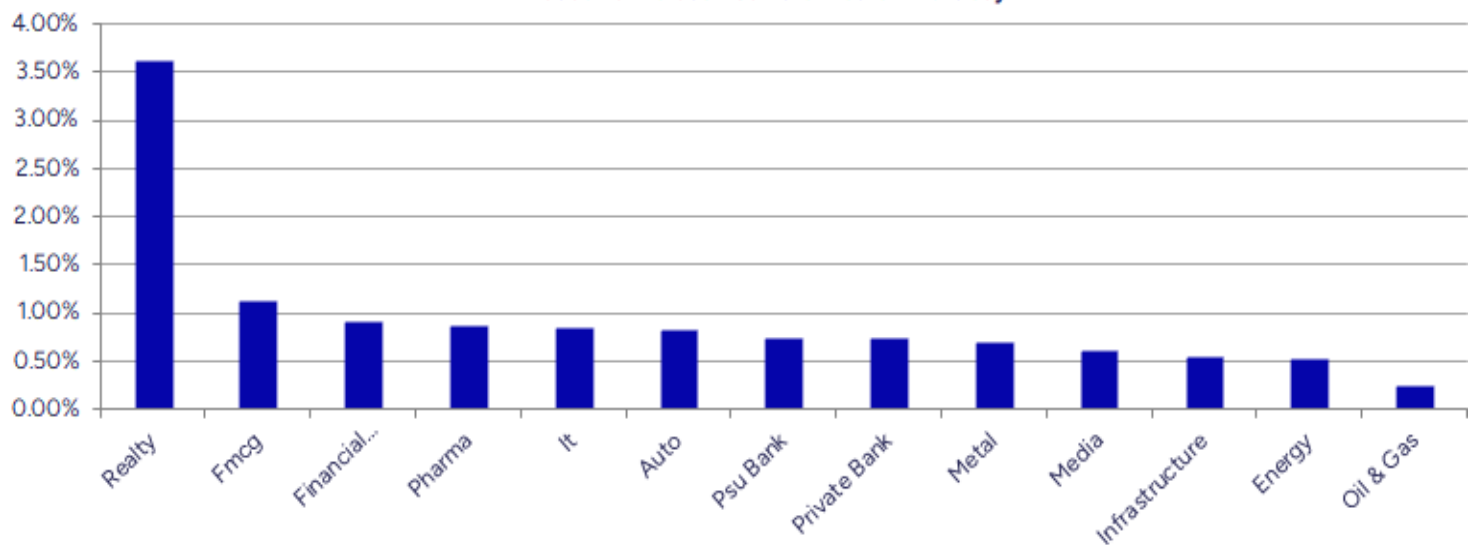
Breakouts - Cross above 200 DMA			
Company Name	LCP	Change %	200 DMA
KPR Mill	960.35	4.91	915.4
Zenith Drugs	93	4.72	88.81
PNB Housing Fin	917.05	4.09	881.05
Niraj Cement	59	3.36	57.08
Godrej Agrovet	781.45	3.25	756.84
Godawari Power	201.75	2.50	196.83
Alivus Life	1060	2.24	1036.77
Refex Ind	409.75	2.16	401.09
Balu Forge Indu	647.6	1.90	635.53
D. P. Abhushan	1532.3	1.73	1506.21
Aegis Logistics	802.65	1.60	790.03
Marico	656.45	1.33	647.86
KHFM HOSPITALIT	91.95	1.31	90.76
Guj Heavy Chem	639.15	1.31	630.89
Ganesh Housing	1079.75	1.20	1066.93
LT Foods	369.9	1.16	365.67
CSB Bank	321.05	1.11	317.54
Veekayem Fashio	242.9	105.00%	240.37

* Stocks crossing above its Simple Moving Average (200DMA)

Breakdown - Cross below 200 DMA			
Company Name	LCP	Change %	200 DMA
Bharat Elec	282.4	-2.97	291.04
Mohini Health &	57.75	-1.92	58.88
Mankind Pharma	2421.9	-1.20	2451.39
AMSL	268.45	-0.97	271.09
UltraTechCement	11250.95	-0.54	11311.85
Vijaya Diagnost	965.4	-0.23	967.66
Hindalco	661.2	-0.04	661.49

* Stocks crossing below its Simple Moving Average (200DMA)

Sectoral Indices - Gainers Losers for the day



Stocks witnessing a volume surge as compared to their 5 day average volur

Watch out for the stocks that have seen a huge spurt in its share price over the last three days

Volume Shockers - NSE					
Company name	LCP	% Chg	Volume	Avg Vol *	% Chg
Hester Bio	1786.7	20	722547	5893	12162
Jindal Worldwid	76.4	3.27	6346177	138074	4496
BEW Engineering	159.05	4.98	45500	1125	3944
Keynote Finance	338.45	18.26	336706	8326	3944
HEG	500.6	3.74	2367301	80062	2857
V-Mart Retail	3299.95	11.75	341140	11748	2804
Vilin Bio Med	27.2	11.25	268000	9600	2692
Punjab & Sind	30.88	-11.42	26314786	1138710	2211
Radiant Cash	67.77	10.57	7101711	324247	2090
MBL Infra	55.48	8.4	1425629	65421	2079
Aegis Logistics	803.4	2.76	8339669	383595	2074
Guj Alkali	649	14.73	969634	44637	2072
Vadilal Ind	5725.85	9.27	304569	17133	1678
Galaxy Surfacta	2240	7.09	214130	12237	1650
DB Realty	171.01	11.68	29721921	2051079	1349
Tarsons Product	361.6	2.09	539471	37422	1342
Central Bank	36.91	-10.65	57987520	4085170	1319
Gallantt Ispat	427.2	4.71	477080	33914	1307
Punjab Chemical	1004.55	-0.5	94071	8140	1056
A2Z Infra Eng	14.3	0.63	745552	65758	1034

* the Average Volume of last 5 days

Price Shockers - NSE				
Company name	LCP	3 days *	% Chg	Volume
Hester Bio	1786.7	1254.5	42.42	722959
Durlax Top Surf	47.6	33.7	41.25	156000
Valiant Organic	335.9	260.65	28.87	876002
Balaji Phosphat	126.85	99.05	28.07	274000
Vital Chemtech	64	50.15	27.62	54000
Manaksia Alumin	23.33	18.39	26.86	358530
Thaai Casting	109.45	86.45	26.6	87200
Vadilal Ind	5704.15	4592.4	24.21	319689
Rossell India	65.85	53.86	22.26	230799
Forge Auto Intl	75.6	61.9	22.13	6000
MBL Infra	55.02	45.19	21.75	1538589
Brooks Labs	129.18	106.36	21.46	388583
Nacl Industries	123.14	101.78	20.99	4486893
Aarey Drugs	40.54	33.51	20.98	97517
Aristo Bio-Tech	140.55	116.2	20.96	9600
Ganesh Benzo	125.75	104.58	20.24	1146219
Manaksia Steels	52.55	44.17	18.97	74420
Ashima	20.09	17.18	16.94	1338542
Celebrity Fash	11.03	9.5	16.11	128820
NDL Ventures	60.29	52.2	15.5	26527

* the % price rise of the last 3 days

Nifty 50 stocks - Summary Details											
Symbol	LTP	Chng	% Chng	Volume (lacs)	Turnover (crs.)	52w High	Diff with 52w H	52w Low	Diff with 52w L	365 days % chng	30 days % chng
NIFTY 50	23332.35	166.65	0.72%	3409.70	24334.10	26277.35	11.21%	21281.45	9.64%	4.71%	3.13%
ADANIEN	2369.00	33.75	1.45%	5.74	135.03	3743.90	36.72%	2025.00	16.99%	11.41%	-28.19%
ADANIPTS	1193.50	18.75	1.60%	12.33	146.43	1621.40	26.39%	995.65	19.87%	9.85%	-14.62%
APOLLOHSP	6720.35	88.05	1.33%	2.93	196.70	7545.35	10.93%	5693.20	18.04%	9.58%	2.71%
ASIANPAINT	2308.95	-7.05	-0.30%	7.93	182.62	3394.90	31.99%	2124.75	8.67%	6.25%	-19.33%
AXISBANK	1086.20	0.60	0.06%	40.65	441.76	1339.65	18.92%	933.50	16.36%	6.90%	3.09%
BAJAJ-AUTO	8075.00	81.95	1.03%	2.37	190.28	12774.00	36.79%	7301.00	10.60%	1.14%	-11.60%
BAJAJFINSV	1921.35	-15.75	-0.81%	10.57	205.36	2029.90	5.35%	1419.05	35.40%	3.46%	17.69%
BAJFINANCE	8630.00	-68.20	-0.78%	6.46	561.36	9260.05	6.80%	6375.70	35.36%	1.97%	19.96%
BEL	282.45	-9.55	-3.27%	526.54	1473.25	340.50	17.05%	203.75	38.63%	18.58%	38.32%
BHARTIARTL	1751.15	27.00	1.57%	64.31	1123.72	1779.00	1.57%	1183.10	48.01%	9.80%	41.63%
CIPLA	1453.20	8.95	0.62%	10.54	152.44	1702.05	14.62%	1317.25	10.32%	2.61%	-3.63%
COALINDIA	398.15	0.50	0.13%	41.97	166.09	543.55	26.75%	349.25	14.00%	7.66%	-10.04%
DRREDDY	1151.65	-0.55	-0.05%	20.71	236.85	1421.49	18.98%	1092.45	5.42%	3.20%	-81.57%
EICHERMOT	5322.00	14.80	0.28%	3.66	195.64	5575.50	4.55%	3886.10	36.95%	11.18%	34.47%
GRASIM	2612.05	-6.95	-0.27%	4.14	108.24	2877.75	9.23%	2171.60	20.28%	13.54%	14.24%
HCLTECH	1531.00	0.65	0.04%	31.68	482.86	2012.20	23.91%	1235.00	23.97%	-2.84%	-1.69%
HDFCBANK	1798.90	31.05	1.76%	57.87	1036.55	1880.00	4.31%	1426.80	26.08%	2.05%	20.22%
HDFCLIFE	694.05	1.15	0.17%	30.47	212.26	761.20	8.82%	511.40	35.72%	13.87%	9.16%
HEROMOTOCO	3782.10	20.05	0.53%	3.22	121.39	6246.25	39.45%	3461.60	9.26%	2.20%	-19.63%
HINDALCO	661.45	-2.30	-0.35%	83.57	549.92	772.65	14.39%	557.60	18.62%	4.63%	16.73%
HINDUNILVR	2237.00	3.15	0.14%	13.51	300.77	3035.00	26.29%	2136.00	4.73%	1.99%	-2.28%
ICICIBANK	1330.85	12.40	0.94%	80.42	1070.21	1373.00	3.07%	1048.10	26.98%	9.50%	19.90%
INDUSINDBK	703.00	20.30	2.97%	149.94	1040.99	1576.35	55.40%	606.00	16.01%	-31.05%	-55.74%
INFY	1550.00	23.50	1.54%	61.93	958.18	2006.45	22.75%	1358.35	14.11%	-9.55%	2.08%
ITC	408.70	2.05	0.50%	80.01	326.97	528.50	22.67%	391.20	4.47%	2.95%	-4.70%
JIOFIN	229.91	-0.51	-0.22%	162.03	369.77	394.70	41.75%	198.65	15.74%	10.99%	-35.45%
JSWSTEEL	1055.40	-0.85	-0.08%	8.79	92.66	1074.90	1.81%	823.80	28.11%	11.10%	21.14%
KOTAKBANK	2153.05	7.15	0.33%	21.32	458.43	2202.50	2.25%	1543.85	39.46%	12.77%	19.84%
LT	3426.00	-10.80	-0.31%	13.39	459.10	3963.50	13.56%	3141.00	9.07%	8.63%	-10.45%
M&M	2637.95	0.05	#VALUE!	22.44	592.54	3270.95	19.35%	1891.80	39.44%	2.04%	37.68%
MARUTI	11691.00	209.90	1.83%	4.53	528.37	13680.00	14.54%	10725.00	9.01%	-3.89%	-8.66%
NESTLEIND	2206.70	-27.30	-1.22%	13.01	285.43	2778.00	20.57%	2110.00	4.58%	2.03%	-13.60%
NTPC	351.65	-0.50	-0.14%	135.93	475.06	448.45	21.59%	292.80	20.10%	13.07%	2.86%
ONGC	250.05	1.98	0.80%	153.38	383.59	345.00	27.52%	215.48	16.04%	10.13%	-8.09%
POWERGRID	287.05	-2.25	-0.78%	116.80	334.92	366.25	21.62%	247.30	16.07%	15.33%	3.27%
RELIANCE	1252.00	-0.60	-0.05%	101.43	1268.88	1608.80	22.18%	1156.00	8.30%	4.37%	-57.82%
SBILIFE	1556.25	11.00	0.71%	18.77	292.29	1936.00	19.62%	1307.70	19.01%	8.02%	3.71%
SBIN	776.60	4.90	0.63%	54.58	421.67	912.00	14.85%	680.00	14.21%	12.04%	1.77%
SHRIRAMFIN	640.25	2.80	0.44%	43.88	279.52	730.45	12.35%	438.60	45.98%	3.26%	-73.79%
SUNPHARMA	1713.95	15.60	0.92%	33.69	575.76	1960.35	12.57%	1377.20	24.45%	6.60%	4.24%
TATACONSUM	1060.80	68.55	6.91%	87.18	922.55	1250.10	15.14%	882.90	20.15%	2.96%	-8.71%
TATAMOTORS	672.20	0.35	0.05%	80.25	537.48	1179.00	42.99%	606.30	10.87%	8.25%	-32.29%
TATASTEEL	154.84	1.72	1.12%	249.78	385.50	184.60	16.12%	122.62	26.28%	11.60%	-6.15%
TCS	3545.00	-5.80	-0.16%	17.64	625.83	4592.25	22.80%	3457.00	2.55%	1.94%	-9.34%
TECHM	1424.50	29.35	2.10%	16.18	229.77	1807.70	21.20%	1162.95	22.49%	-6.23%	12.10%
TITAN	3102.30	115.35	3.86%	16.75	512.07	3867.00	19.78%	2971.15	4.41%	-2.93%	-20.10%
TRENT	5666.30	89.55	1.61%	14.92	840.48	8345.00	32.10%	3843.00	47.44%	14.95%	43.48%
ULTRACEMCO	11275.00	-103.65	-0.91%	3.76	423.05	12145.35	7.17%	9250.00	21.89%	12.34%	14.31%
WIPRO	263.50	0.90	0.34%	71.37	187.97	324.60	18.82%	208.50	26.38%	-5.42%	-45.85%
ZOMATO	211.70	9.69	4.80%	594.41	1235.55	304.70	30.52%	146.30	44.70%	-9.05%	9.49%

Disclaimer / Disclosures

ANALYST CERTIFICATION

I, Mrs. Vaishali Parekh B.com, Research Analyst, author and the name subscribed to this report, hereby certify that all of the views expressed in this research report accurately reflect our views about the subject issuer(s) or securities. We also certify that no part of our compensation was, is, or will be directly or indirectly related to the specific recommendation(s) or view(s) in this report.

Terms & conditions and other disclosures:

Prabhudas Lilladher Pvt. Ltd, Mumbai, India (hereinafter referred to as "PL") is engaged in the business of Stock Broking, Portfolio Manager, Depository Participant and distribution for third party financial products. PL is a subsidiary of Prabhudas Lilladher Advisory Services Pvt Ltd. which has its various subsidiaries engaged in business of commodity broking, investment banking, financial services (margin funding) and distribution of third party financial/other products, details in respect of which are available at www.plindia.com

This document has been prepared by the Research Division of PL and is meant for use by the recipient only as information and is not for circulation. This document is not to be reported or copied or made available to others without prior permission of PL. It should not be considered or taken as an offer to sell or a solicitation to buy or sell any security.

The information contained in this report has been obtained from sources that are considered to be reliable. However, PL has not independently verified the accuracy or completeness of the same. Neither PL nor any of its affiliates, its directors or its employees accepts any responsibility of whatsoever nature for the information, statements and opinion given, made available or expressed herein or for any omission therein.

Recipients of this report should be aware that past performance is not necessarily a guide to future performance and value of investments can go down as well. The suitability or otherwise of any investments will depend upon the recipient's particular circumstances and, in case of doubt, advice should be sought from an independent expert/advisor.

Either PL or its affiliates or its directors or its employees or its representatives or its clients or their relatives may have position(s), make market, act as principal or engage in transactions of securities of companies referred to in this report and they may have used the research material prior to publication.

PL may from time to time solicit or perform investment banking or other services for any company mentioned in this document.

PL is registered as Research Analyst under Securities and Exchange Board of India (Research Analysts) Regulations, 2014 PL submits that no material disciplinary action has been taken on us by any Regulatory Authority impacting Equity Research Analysis activities.

PL or its research analysts or its associates or his relatives do not have any financial interest in the subject company.

PL or its research analysts or its associates or his relatives do not have actual/beneficial ownership of one per cent or more securities of the subject company at the end of the month immediately preceding the date of publication of the research report.

PL or its research analysts or its associates or his relatives do not have any material conflict of interest at the time of publication of the research report.

PL or its associates might have received compensation from the subject company in the past twelve months.

PL or its associates might have managed or co-managed public offering of securities for the subject company in the past twelve months or mandated by the subject company for any other assignment in the past twelve months.

PL or its associates might have received any compensation for investment banking or merchant banking or brokerage services from the subject company in the past twelve months.

PL or its associates might have received any compensation for products or services other than investment banking or merchant banking or brokerage services from the subject company in the past twelve months PL or its associates might have received any compensation or other benefits from the subject company or third party in connection with the research report.

PL encourages independence in research report preparation and strives to minimize conflict in preparation of research report. PL or its analysts did not receive any compensation or other benefits from the subject Company or third party in connection with the preparation of the research report. PL or its Research Analysts do not have any material conflict of interest at the time of publication of this report.

It is confirmed that Mrs.Vaishali Parekh B.com, Research Analyst of this report has not received any compensation from the companies mentioned in the report in the preceding twelve months compensation of our Research Analysts is not based on any specific merchant banking, investment banking or brokerage service transactions.

The Research analysts for this report certifies that all of the views expressed in this report accurately reflect his or her personal views about the subject company or companies and its or their securities, and no part of his or her compensation was, is or will be, directly or indirectly related to specific recommendations or views expressed in this report.

The research analysts for this report has not served as an officer, director or employee of the subject company PL or its research analysts have not engaged in market making activity for the subject company

Our sales people, traders, and other professionals or affiliates may provide oral or written market commentary or trading strategies to our clients that reflect opinions that are contrary to the opinions expressed herein, and our proprietary trading and investing businesses may make investment decisions that are inconsistent with the recommendations expressed herein. In reviewing these materials, you should be aware that any or all of the foregoing, among other things, may give rise to real or potential conflicts of interest.

PL and its associates, their directors and employees may (a) from time to time, have a long or short position in, and buy or sell the securities of the subject company or (b) be engaged in any other transaction involving such securities and earn brokerage or other compensation or act as a market maker in the financial instruments of the subject company or act as an advisor or lender/borrower to the subject company or may have any other potential conflict of interests with respect to any recommendation and other related information and opinions.