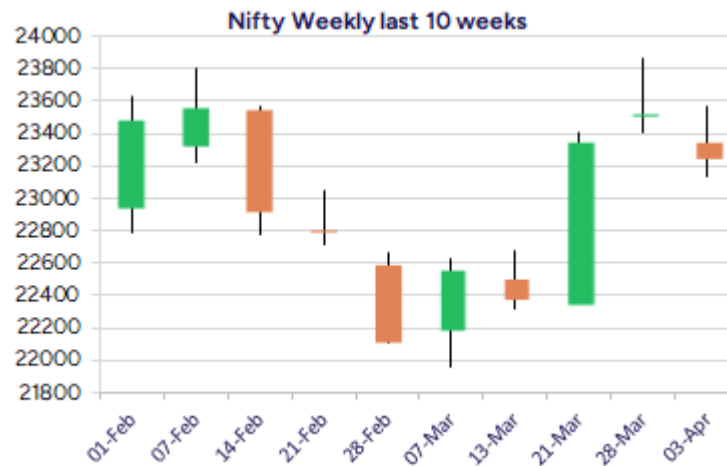
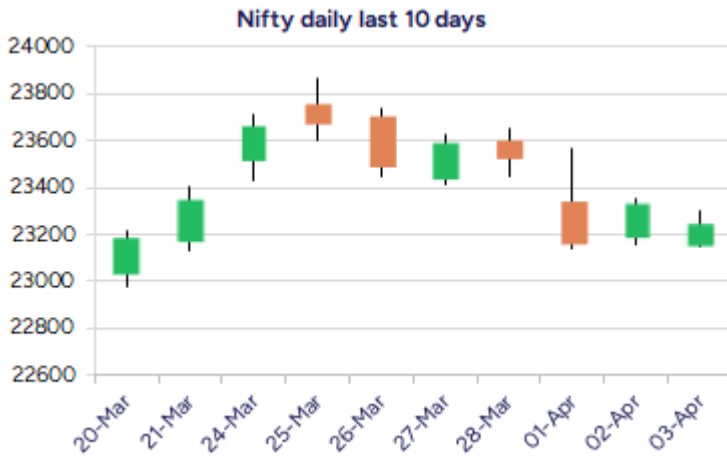


* Sensex 76295.36 -322.08

* Nifty 23250.10 -82.25

* Bank Nifty 51597.35 +249.30



*Blue candle → Close rate > Open rate * Red candle → Close rate < Open rate

Market Preview

Nifty indicates resilience; 23100 important support

Nifty once again maintained the support near 23150 zone and witnessed a decent pullback to keep hopes alive for further upward move during the eventful session. BankNifty indicating strength regained from the low near 51000 level and closed on an optimistic note. The market breadth was overall strong with the advance decline indicating a ratio of 3:1 at close.

Market Forecast

Nifty daily range 23100-23400

Nifty, amid the weak cues, witnessed a decent recovery from the 50EMA support zone of 23150 level to maintain the bias intact and can anticipate for further upward movement provided the near-term support of 23100 level is sustained in the coming sessions. The index as of now has shown resilience and in the next 2-3 sessions can get a clarity and confirmation for further directional move. The index having psychological base near 23000 zone would need to move past the 23800 zone for fresh upward move.

BankNifty, indicating strength, once again witnessed a pullback from 51000 level and gained momentum to close near the 51600 zone with most of the PSU Banks also supporting the frontline banking stocks to expect for further rise in the coming sessions. As mentioned earlier, the index would have the important near-term support of the 50EMA zone at 49750 level and on the upper side, a decisive breach above the 52000 zone shall trigger for fresh upward move in the coming days. The support for the day is seen at 23100 levels while the resistance is seen at 23400 levels. BankNifty would have the daily range of 51200-52000 levels.

Indices	Period	Closing	% Chng	Trend	Reversal	2 Sup	1 Sup	Pivot	1 Res	2 Res
Nifty	Daily	23250.10	-0.35%	-4	23598.15	23073	23162	23234	23322	23395
	Weekly	23519.35	0.72%	2	22456.20	23156	23338	23604	23785	24051
	Monthly	23519.35	0.05%	-6	25020.35	21213	22366	23118	24271	25022
Bank Nifty	Daily	51597.35	0.49%	-3	51843.35	50634	51115	51389	51870	52143
	Weekly	51564.85	1.92%	2	48907.35	50254	50910	51485	52141	52716
	Monthly	51564.85	3.99%	-6	52195.95	46118	48841	50451	53175	54785
Sensex	Daily	76295.36	-0.42%	-4	77566.95	75513	75904	76199	76590	76885
	Weekly	77414.92	0.66%	2	74177.95	76094	76754	77748	78408	79402
	Monthly	77414.92	-0.11%	-6	82130.50	70156	73785	76263	79893	82371

Nifty Daily chart with RSI indicator



BankNifty Daily chart with RSI indicator

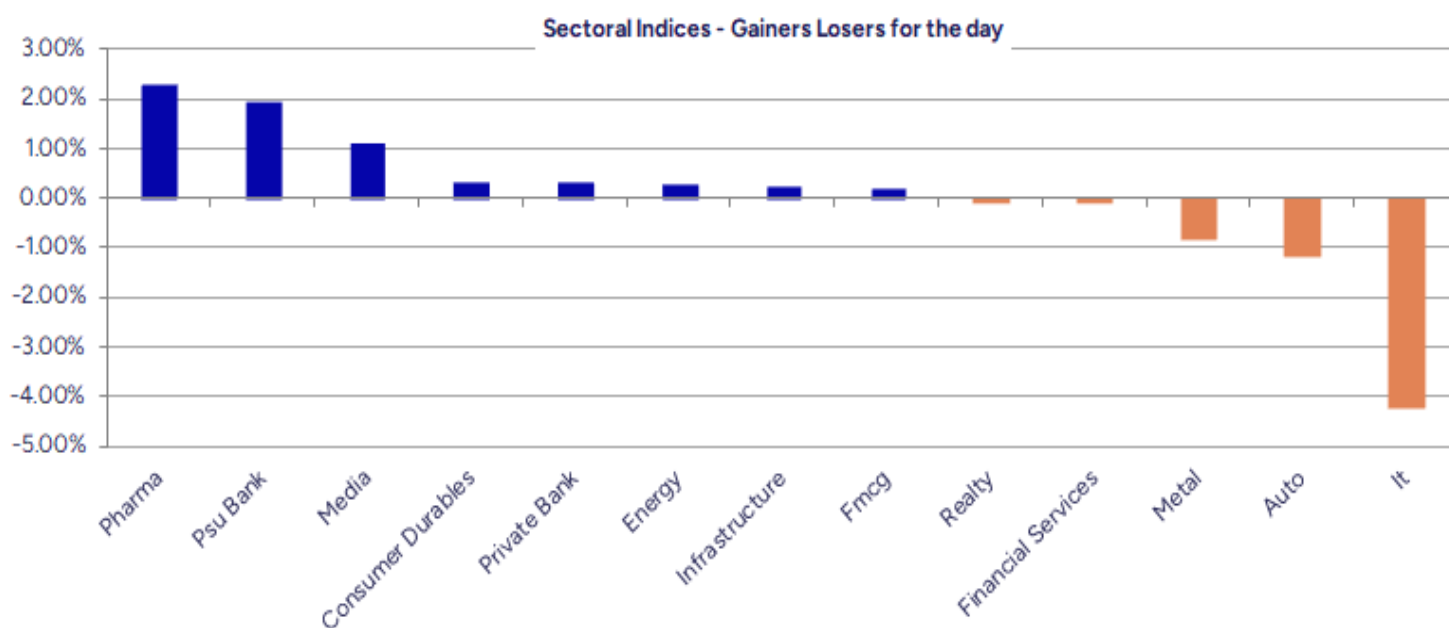


Breakouts - Cross above 200 DMA			
Company Name	LCP	Change %	200 DMA
Krishna Defence	768.8	7.75	713.5
India Glycols	1258.95	3.96	1210.94
Ipca Labs	1497.6	3.66	1444.72
Kingfa Science	3115.8	3.47	3011.24
Alpa Labs	113.02	3.41	109.29
Balaji Telefilm	69.25	3.20	67.1
Eurotex	14.29	3.10	13.86
AMSL	278.75	2.66	271.52
Gillanders Arbu	103.6	2.61	100.96
UltraTechCement	11606.6	2.60	11312.24
V R Infraspac	250.8	1.96	245.98
Xpro India	1216.95	1.95	1193.72
Poonawalla Fin	362.5	1.89	355.79
Lupin	2095.7	1.86	2057.4
Suven Pharma	1125.2	1.74	1105.93
Lotus Eye Care	69.37	1.73	68.19
Himatsingka Sei	158.95	1.61	156.43
Indian Bank	549.2	157.00%	540.69

* Stocks crossing above its Simple Moving Average (200DMA)

Breakdown - Cross below 200 DMA			
Company Name	LCP	Change %	200 DMA
Pokarna	954.6	-8.22	1040.04
COFORGE LTD.	7157.4	-3.97	7453.19
Vedanta	439.5	-3.39	454.9
Aurionpro Solut	1574.15	-2.12	1608.19
Spectrum Electr	1892.8	-1.47	1920.96
MO Nasdaq Q50	72.74	-1.40	73.77
Guj Heavy Chem	622.85	-1.37	631.48
Quess Corp	676.9	-0.57	680.8
Borosil Renew	507.35	-0.41	509.46

* Stocks crossing below its Simple Moving Average (200DMA)



Stocks witnessing a volume surge as compared to their 5 day average volume

Watch out for the stocks that have seen a huge spurt in its share price over the last three days

Volume Shockers - NSE					
Company name	LCP	% Chg	Volume	Avg Vol *	% Chg
Balaxi Pharma	68	1.49	4346036	38449	11203
Hester Bio	1813.05	1.47	411043	5893	6876
Tejas Networks	878.45	9.4	27412168	434698	6206
Jindal Worldwid	76.32	-0.31	6217982	138074	4403
Guj Alkali	648.9	0.18	1377741	44637	2987
Mahickra Chemic	111	1.19	58500	1950	2900
Donear Ind	120.01	12.92	1389081	52105	2566
Jash Engineerin	635	7.59	695625	26774	2498
Medicamen Bio	520.1	7.12	233434	9625	2325
Dr Reddys Labs	1151.35	0.12	6183803	296967	1982
BEW Engineering	167	5	23000	1125	1944
Oneclick Logi.	154.5	0.06	85200	4320	1872
Punjab & Sind	30.12	-1.28	21741448	1138710	1809
Arvind Smart	690	-4.21	446454	25556	1647
Trident	27.18	7.64	96435320	5880175	1540
Avanti Feeds	753.9	-15.36	7759951	533245	1355
Precot	469.35	5	54598	3752	1355
Nacl Industries	132.21	7.37	7683776	580493	1224
GE Power India	256.59	2.5	812086	64435	1160
Diamond Power	97	2.68	85555	6800	1158

* the Average Volume of last 5 days

Price Shockers - NSE				
Company name	LCP	3 days *	% Chg	Volume
Vital Chemtech	73.5	50.15	46.56	40800
Hester Bio	1827.2	1254.5	45.65	417362
Durlax Top Surf	48	33.7	42.43	36000
Valiant Organic	355.6	260.65	36.43	348087
Aarey Drugs	44.59	33.51	33.06	40051
Forge Auto Intl	80	61.9	29.24	6000
Bal Pharma	108.34	83.9	29.13	432642
Sanginita Chemi	11.58	8.99	28.81	247121
Nacl Industries	130.32	101.78	28.04	7839795
V R Infraspace	250.8	196	27.96	3600
Rossell India	68.62	53.86	27.4	101099
Ashima	21.6	17.18	25.73	705346
Vadilal Ind	5766.2	4592.4	25.56	107835
Manaksia Alumin	23.09	18.39	25.56	45216
Thaai Casting	107	86.45	23.77	86400
Maral Overseas	74.98	60.63	23.67	199611
Anuh Pharma	183.76	149.19	23.17	199095
Sportking India	93.77	76.44	22.67	489420
Ganesh Benzo	128.28	104.58	22.66	240085
Paramount Speci	52.65	43.25	21.73	34000

* the % price rise of the last 3 days

Nifty 50 stocks - Summary Details

Symbol	LTP	Chng	% Chng	Volume (lacs)	Turnover (crs.)	52w High	Diff with 52w H	52w Low	Diff with 52w L	365 days % chng	30 days % chng
NIFTY 50	23250.10	-82.25	-0.35%	2831.49	23498.09	26277.35	11.52%	21281.45	9.25%	5.48%	3.92%
ADANIANT	2414.00	44.60	1.88%	10.23	245.96	3743.90	35.52%	2025.00	19.21%	11.92%	-27.51%
ADANIPTS	1201.30	5.85	0.49%	13.00	155.46	1621.40	25.91%	995.65	20.65%	13.52%	-14.86%
APOLLOHOSP	6670.05	-62.10	-0.92%	3.13	209.98	7545.35	11.60%	5693.20	17.16%	9.10%	4.87%
ASIANPAINT	2347.70	41.05	1.78%	6.09	142.42	3394.90	30.85%	2124.75	10.49%	6.47%	-19.75%
AXISBANK	1089.90	5.45	0.50%	53.46	581.80	1339.65	18.64%	933.50	16.75%	7.66%	3.56%
BAJAJ-AUTO	7909.75	-163.20	-2.02%	4.70	371.03	12774.00	38.08%	7301.00	8.34%	4.64%	-12.97%
BAJAJFINSV	1919.00	-11.95	-0.62%	15.98	308.03	2029.90	5.46%	1419.05	35.23%	5.03%	16.56%
BAJFINANCE	8570.00	-99.25	-1.14%	13.97	1200.75	9260.05	7.45%	6375.70	34.42%	0.48%	20.28%
BEL	287.50	5.10	1.81%	209.63	599.53	340.50	15.57%	212.60	35.23%	9.72%	27.78%
BHARTIARTL	1742.50	-12.10	-0.69%	23.42	408.96	1779.00	2.05%	1183.10	47.28%	9.95%	45.22%
CIPLA	1500.00	47.65	3.28%	34.89	523.63	1702.05	11.87%	1317.25	13.87%	3.18%	-2.49%
COALINDIA	396.80	-0.70	-0.18%	49.70	197.44	543.55	27.00%	349.25	13.61%	10.31%	-10.31%
DRREDDY	1151.80	1.80	0.16%	63.25	747.14	1421.49	18.97%	1092.45	5.43%	2.72%	-81.56%
EICHERMOT	5372.50	17.00	0.32%	2.24	120.56	5575.50	3.64%	3886.10	38.25%	9.15%	36.54%
GRASIM	2652.00	35.50	1.36%	2.98	78.85	2877.75	7.84%	2171.60	22.12%	10.05%	13.45%
HCLTECH	1468.40	-59.15	-3.87%	39.65	585.74	2012.20	27.03%	1235.00	18.90%	-2.85%	-0.05%
HDFCBANK	1792.80	-4.10	-0.23%	56.21	1008.46	1880.00	4.64%	1426.80	25.65%	5.60%	21.40%
HDFCLIFE	692.45	-3.70	-0.53%	13.54	93.74	761.20	9.03%	511.40	35.40%	12.65%	10.17%
HEROMOTOCO	3745.00	-38.95	-1.03%	3.40	127.68	6246.25	40.04%	3461.60	8.19%	4.22%	-17.03%
HINDALCO	653.10	-8.10	-1.23%	56.46	368.83	772.65	15.47%	557.60	17.13%	3.87%	15.76%
HINDUNILVR	2241.65	3.75	0.17%	13.10	293.52	3035.00	26.14%	2136.00	4.95%	2.80%	-2.13%
ICICIBANK	1328.95	-2.30	-0.17%	45.91	609.95	1373.00	3.21%	1048.10	26.80%	10.37%	23.13%
INDUSINDBK	708.60	6.15	0.88%	69.72	493.27	1576.35	55.05%	606.00	16.93%	-28.61%	-54.95%
INFY	1495.80	-54.35	-3.51%	104.58	1568.55	2006.45	25.45%	1358.35	10.12%	-9.27%	4.54%
ITC	409.00	-0.05	-0.01%	70.53	288.43	528.50	22.61%	391.20	4.55%	2.92%	-3.95%
JIOFIN	230.64	0.86	0.37%	117.47	270.03	394.70	41.57%	198.65	16.10%	14.36%	-35.65%
JSWSTEEL	1043.05	-12.85	-1.22%	16.08	168.46	1074.90	2.96%	823.80	26.61%	8.18%	20.09%
KOTAKBANK	2133.00	-21.60	-1.00%	16.94	361.76	2202.50	3.16%	1543.85	38.16%	12.54%	22.60%
LT	3419.00	-0.90	-0.03%	12.00	412.08	3963.50	13.74%	3141.00	8.85%	6.96%	-10.18%
M&M	2617.00	-20.55	-0.78%	23.61	619.79	3270.95	19.99%	1901.45	37.63%	0.98%	33.75%
MARUTI	11646.00	-70.10	-0.60%	3.27	382.30	13680.00	14.87%	10725.00	8.59%	-0.51%	-6.66%
NESTLEIND	2240.00	29.30	1.33%	3.18	70.81	2778.00	19.37%	2110.00	6.16%	1.15%	-15.73%
NTPC	359.25	7.50	2.13%	103.17	369.41	448.45	19.89%	292.80	22.69%	11.88%	2.02%
ONGC	243.59	-7.05	-2.81%	111.38	272.47	345.00	29.39%	215.48	13.05%	11.33%	-8.02%
POWERGRID	299.95	13.20	4.60%	234.78	694.90	366.25	18.10%	247.30	21.29%	13.56%	2.58%
RELIANCE	1248.50	-2.65	-0.21%	74.34	926.53	1608.80	22.40%	1156.00	8.00%	6.82%	-57.93%
SBILIFE	1546.40	-13.45	-0.86%	3.73	57.79	1936.00	20.12%	1307.70	18.25%	10.75%	6.07%
SBIN	779.90	3.95	0.51%	79.56	619.35	912.00	14.48%	680.00	14.69%	11.60%	1.25%
SHRIRAMFIN	654.10	14.70	2.30%	37.05	241.74	730.45	10.45%	438.60	49.13%	2.91%	-74.07%
SUNPHARMA	1772.00	58.35	3.41%	57.16	1020.08	1960.35	9.61%	1377.20	28.67%	8.11%	5.63%
TATACONSUM	1068.65	5.95	0.56%	15.94	170.36	1250.10	14.51%	882.90	21.04%	11.41%	-6.05%
TATAMOTORS	655.55	-16.35	-2.43%	134.74	888.01	1179.00	44.40%	606.30	8.12%	8.17%	-33.12%
TATASTEEL	153.85	-0.84	-0.54%	151.11	233.38	184.60	16.66%	122.62	25.47%	11.63%	-6.05%
TCS	3403.30	-140.65	-3.97%	45.37	1552.74	4592.25	25.89%	3396.15	0.21%	1.46%	-8.75%
TECHM	1370.00	-53.05	-3.73%	19.43	267.53	1807.70	24.21%	1162.95	17.80%	-4.69%	15.06%
TITAN	3125.00	26.55	0.86%	11.16	349.13	3867.00	19.19%	2971.15	5.18%	0.53%	-17.51%
TRENT	5666.00	-16.50	-0.29%	9.61	547.61	8345.00	32.10%	3843.00	47.44%	14.87%	46.01%
ULTRACEMCO	11595.10	344.15	3.06%	3.62	416.46	12145.35	4.53%	9250.00	25.35%	8.80%	12.08%
WIPRO	256.65	-6.95	-2.64%	122.62	315.64	324.60	20.93%	208.50	23.09%	-7.04%	-45.22%
ZOMATO	211.00	-1.03	-0.49%	444.42	940.00	304.70	30.75%	146.30	44.22%	-4.55%	15.80%

Disclaimer / Disclosures

ANALYST CERTIFICATION

I, Mrs. Vaishali Parekh B.com, Research Analyst, author and the name subscribed to this report, hereby certify that all of the views expressed in this research report accurately reflect our views about the subject issuer(s) or securities. We also certify that no part of our compensation was, is, or will be directly or indirectly related to the specific recommendation(s) or view(s) in this report.

Terms & conditions and other disclosures:

Prabhudas Lilladher Pvt. Ltd, Mumbai, India (hereinafter referred to as "PL") is engaged in the business of Stock Broking, Portfolio Manager, Depository Participant and distribution for third party financial products. PL is a subsidiary of Prabhudas Lilladher Advisory Services Pvt Ltd. which has its various subsidiaries engaged in business of commodity broking, investment banking, financial services (margin funding) and distribution of third party financial/other products, details in respect of which are available at www.plindia.com

This document has been prepared by the Research Division of PL and is meant for use by the recipient only as information and is not for circulation. This document is not to be reported or copied or made available to others without prior permission of PL. It should not be considered or taken as an offer to sell or a solicitation to buy or sell any security.

The information contained in this report has been obtained from sources that are considered to be reliable. However, PL has not independently verified the accuracy or completeness of the same. Neither PL nor any of its affiliates, its directors or its employees accepts any responsibility of whatsoever nature for the information, statements and opinion given, made available or expressed herein or for any omission therein.

Recipients of this report should be aware that past performance is not necessarily a guide to future performance and value of investments can go down as well. The suitability or otherwise of any investments will depend upon the recipient's particular circumstances and, in case of doubt, advice should be sought from an independent expert/advisor.

Either PL or its affiliates or its directors or its employees or its representatives or its clients or their relatives may have position(s), make market, act as principal or engage in transactions of securities of companies referred to in this report and they may have used the research material prior to publication.

PL may from time to time solicit or perform investment banking or other services for any company mentioned in this document.

PL is registered as Research Analyst under Securities and Exchange Board of India (Research Analysts) Regulations, 2014 PL submits that no material disciplinary action has been taken on us by any Regulatory Authority impacting Equity Research Analysis activities.

PL or its research analysts or its associates or his relatives do not have any financial interest in the subject company.

PL or its research analysts or its associates or his relatives do not have actual/beneficial ownership of one per cent or more securities of the subject company at the end of the month immediately preceding the date of publication of the research report.

PL or its research analysts or its associates or his relatives do not have any material conflict of interest at the time of publication of the research report.

PL or its associates might have received compensation from the subject company in the past twelve months.

PL or its associates might have managed or co-managed public offering of securities for the subject company in the past twelve months or mandated by the subject company for any other assignment in the past twelve months.

PL or its associates might have received any compensation for investment banking or merchant banking or brokerage services from the subject company in the past twelve months.

PL or its associates might have received any compensation for products or services other than investment banking or merchant banking or brokerage services from the subject company in the past twelve months PL or its associates might have received any compensation or other benefits from the subject company or third party in connection with the research report.

PL encourages independence in research report preparation and strives to minimize conflict in preparation of research report. PL or its analysts did not receive any compensation or other benefits from the subject Company or third party in connection with the preparation of the research report. PL or its Research Analysts do not have any material conflict of interest at the time of publication of this report.

It is confirmed that Mrs.Vaishali Parekh B.com, Research Analyst of this report has not received any compensation from the companies mentioned in the report in the preceding twelve months compensation of our Research Analysts is not based on any specific merchant banking, investment banking or brokerage service transactions.

The Research analysts for this report certifies that all of the views expressed in this report accurately reflect his or her personal views about the subject company or companies and its or their securities, and no part of his or her compensation was, is or will be, directly or indirectly related to specific recommendations or views expressed in this report.

The research analysts for this report has not served as an officer, director or employee of the subject company PL or its research analysts have not engaged in market making activity for the subject company

Our sales people, traders, and other professionals or affiliates may provide oral or written market commentary or trading strategies to our clients that reflect opinions that are contrary to the opinions expressed herein, and our proprietary trading and investing businesses may make investment decisions that are inconsistent with the recommendations expressed herein. In reviewing these materials, you should be aware that any or all of the foregoing, among other things, may give rise to real or potential conflicts of interest.

PL and its associates, their directors and employees may (a) from time to time, have a long or short position in, and buy or sell the securities of the subject company or (b) be engaged in any other transaction involving such securities and earn brokerage or other compensation or act as a market maker in the financial instruments of the subject company or act as an advisor or lender/borrower to the subject company or may have any other potential conflict of interests with respect to any recommendation and other related information and opinions.