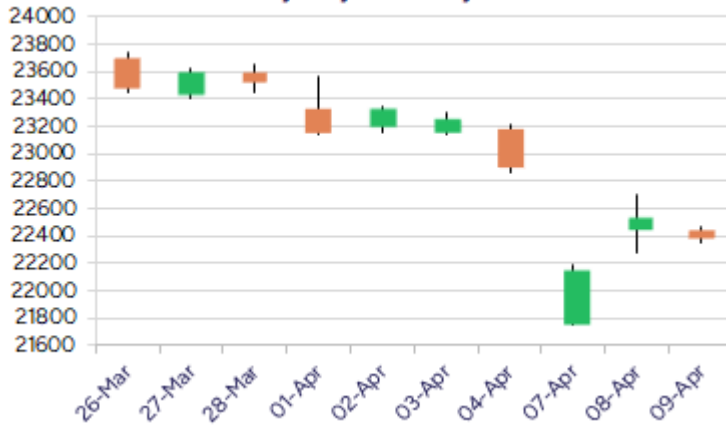


* Sensex 73847.15 -379.93

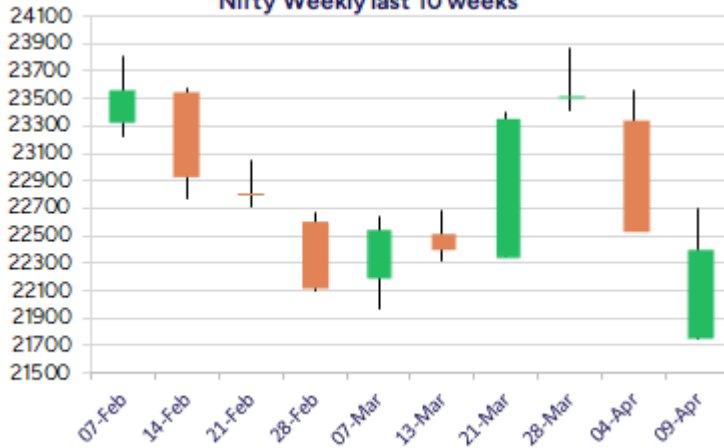
* Nifty 22399.15 -136.70

* Bank Nifty 50240.15 -270.85

Nifty daily last 10 days



Nifty Weekly last 10 weeks



*Blue candle → Close rate > Open rate * Red candle → Close rate < Open rate

Market Preview

Nifty index precariously placed amid Tariff war

Nifty witnessed a gap down opening and thereafter, remained lull for the entire part of the session to close near 22400 zone with bias and sentiment maintained with a very cautious approach. BankNifty managed to move above the 50000 zone and with overall situation precariously placed, would need to sustain above the recent low of 49150 level as of now. The market breadth was slightly on the weaker side with the advance decline indicating a ratio of 2:3 at close.

Market Forecast

Nifty daily range 22200-22600

Nifty, after opening with a gap down, remained sluggish with a narrow rangebound movement to end near the 22400 zone with bias and sentiment precariously placed and further ahead, would need to move past the 22700 level to establish some conviction. The zone near the 22200 would be the crucial and important support level below which the index would once again get into the weaker zone opening the fresh downward targets.

BankNifty, amid some volatility sustained near the 49900 zone and witnessed a gradual pullback to close near the 50250 level with the overall bias maintained with a cautious approach. The index needs to move past the important resistance zone of 50700 level to overcome the weakness and thereafter, expect for further rise in the coming sessions.

The support for the day is seen at 22200 levels while the resistance is seen at 22600 levels. BankNifty would have the daily range of 49700-51000 levels.

Indices	Period	Closing	% Chng	Trend	Reversal	2 Sup	1 Sup	Pivot	1 Res	2 Res
Nifty	Daily	22399.15	-0.61%	-8	22726.05	22292	22345	22407	22461	22522
	Weekly	22904.45	-2.61%	3	22573.75	22489	22697	23130	23338	23771
	Monthly	23519.35	0.05%	-6	25020.35	21213	22366	23118	24271	25022
Bank Nifty	Daily	50240.15	-0.54%	-7	51247.05	49630	49935	50216	50521	50802
	Weekly	51502.70	-0.12%	3	49564.75	50240	50871	51380	52011	52519
	Monthly	51564.85	3.99%	-6	52195.95	46118	48841	50451	53175	54785
Sensex	Daily	73847.15	-0.51%	-8	74701.30	73444	73646	73875	74076	74305
	Weekly	75364.89	-2.65%	3	74441.40	74051	74708	76095	76752	78140
	Monthly	77414.92	-0.11%	-6	82130.50	70156	73785	76263	79893	82371

Daily Trend turned Up

Scrip Name	LCP	Curr Trnd	Reversal
AMBUJACEM	547.8	-3	539.4
ASHOKLEY	204.68	-3	203.85
CHAMBLFERT	638.05	-4	635.4
EMAMILTD	599.85	-1	585.9
GODREJIND	1108.7	-10	1092.1
ICICIPRULI	568.85	-7	552.65
INDIGO	5193.75	-6	5155.6
JUSTDIAL	816	-3	807.45
UNITEDSPIRITS	1451.6	-2	1426.8
MCX	5221.05	-3	5198.95
NHPC	84.4	-3	83.85
TVMOTOR	2475.25	-3	2465.75

* Trends turned Up after a significant period

Daily Trend turned Down

Scrip Name	LCP	Curr Trnd	Reversal
BAJFINANCE	8735.8	1	8746.3
BIRLACORPN	1091.55	1	1120.55
CIPLA	1415.6	1	1422.15
CUB	159.78	1	161.9
ENGINERSIN	158.88	1	162.4
LUPINLTD	1919.7	1	1980.45
ORACLEFIN	7401.1	1	7447.5
SRTRANSFIN	624.55	1	632.25
SUNTV	647.95	1	648.15

* Trends turned Down after a significant period

Gainers - Losers (Nifty 500 Stocks)

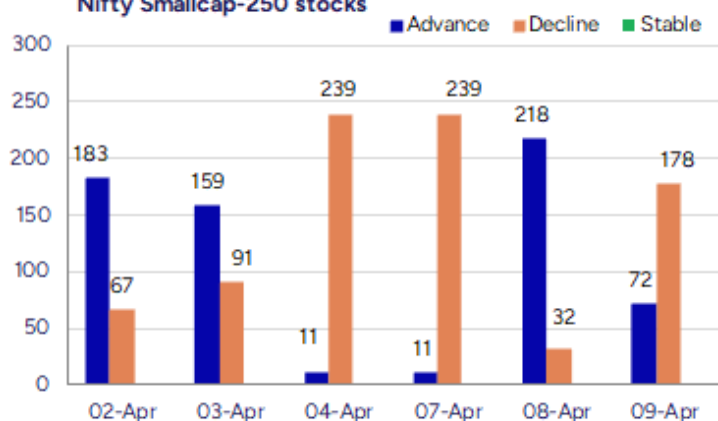
Gainers

Scrip Name	LCP	% Change	Volume
Binani Ind	14.48	19.97	313149
One Point One S	56.6	12.77	15393557
HP Telecom Ind	121.4	10.31	4800
Jyothy Labs	379.6	10.27	14072847
Cura Tech	43.93	9.99	2
Keynote Finance	398.6	9.21	317996
Vasa Denticity	689.9	8.98	68250

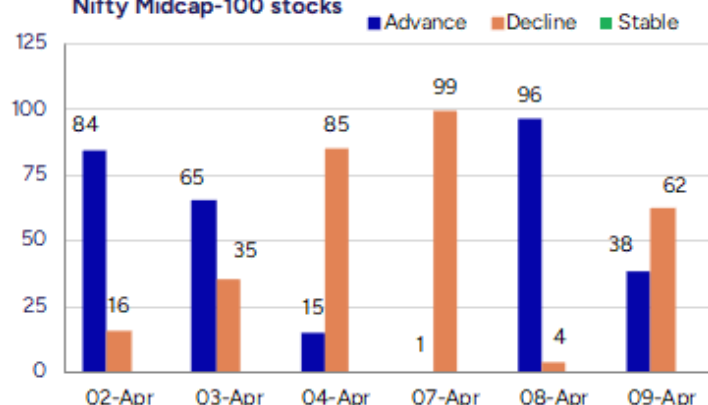
Losers

Scrip Name	LCP	% Change	Volume
G-Tec Jainx	28.34	-9.89	16692
Blue Jet	626.05	-9.86	1302595
Creative Graphi	135.5	-9.49	392800
Sharda Crop	456.05	-9.45	388699
Themis Medicare	115.91	-9.4	304970
CarTrade Tech	1385.95	-9.08	681608
Guj Amb Exports	109.79	-9.03	2322592

Nifty Smallcap-250 stocks



Nifty Midcap-100 stocks



Nifty Daily chart with RSI indicator



BankNifty Daily chart with RSI indicator

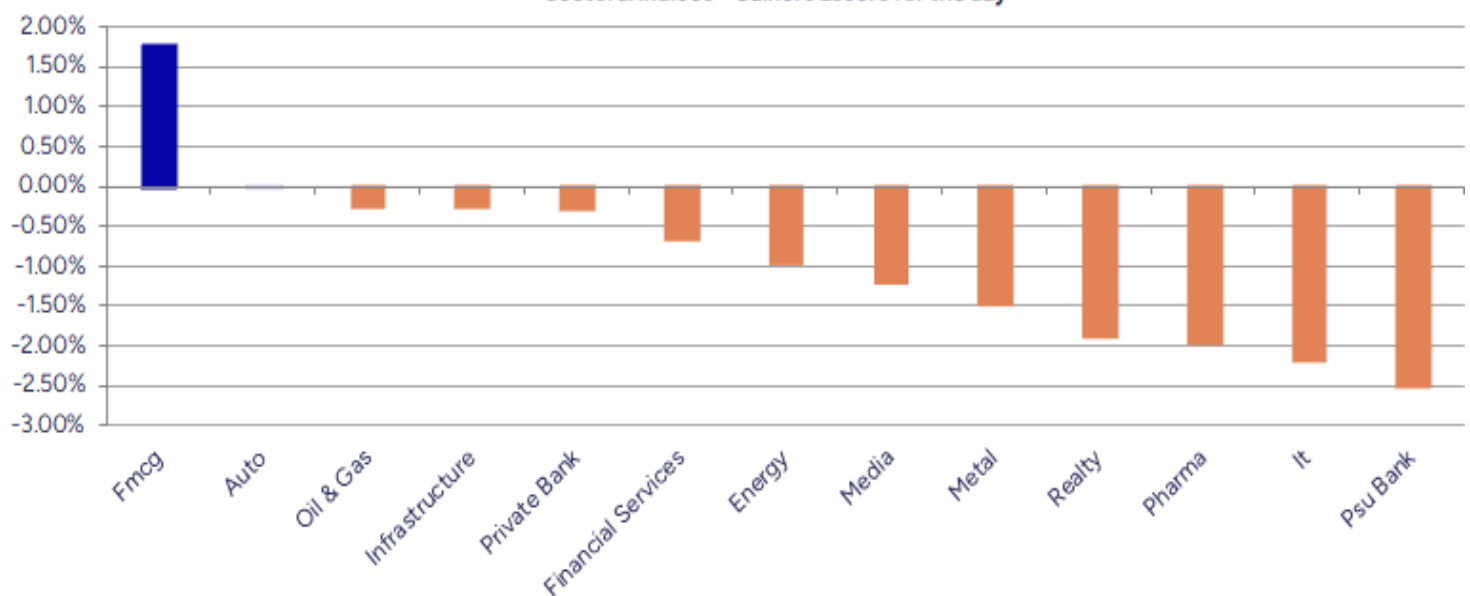


Breakouts - Cross above 200 DMA				Breakdown - Cross below 200 DMA			
Company Name	LCP	Change %	200 DMA	Company Name	LCP	Change %	200 DMA
Vasa Denticity	689.9	8.93	633.33	Piramal Pharma	208.37	-4.25	217.63
Vinsys IT	389.1	3.79	374.9	Capacite Infra	352.05	-3.37	364.33
Nitiraj Enginee	260.45	2.96	252.96	Torrent Pharma	3126.8	-3.35	3235.28
Ramdevbaba Solv	117	2.54	114.1	Steelcast	766.6	-3.29	792.64
Ujjivan Small	39.03	1.93	38.29	Mah Seamless	632.05	-3.24	653.23
Raj Rayon Ind	22.97	1.32	22.67	Thangamayil	1904.45	-3.06	1964.63
HINDPETRO	379.3	1.24	374.65	Mega Flex	44.85	-2.92	46.2
Apollo Hospital	6834.1	0.89	6773.98	Indostar Capita	261.2	-2.72	268.51
Destiny Logisti	87.15	0.75	86.5	Sundaram	299.8	-2.56	307.68
UltraTechCement	11397.05	0.69	11318.77	Indian Bank	526.95	-2.55	540.75
Dalmia Bharat	1825.9	0.66	1813.92	Windlas	892.3	-2.18	912.14
SIL Invest	602.15	0.52	599.04	NAVA	456.35	-1.84	464.9
SML Isuzu	1688.65	0.46	1681	Univastu India	224.58	-1.78	228.66
GMRP&UI	114.5	0.38	114.07	GPT Healthcare	166.86	-1.57	169.53
United Spirits	1451.6	0.36	1446.36	Deep Ind	448.75	-1.56	455.85
Krishna Defence	712.5	0.35	710.05	HDFC Nifty Pri	25.25	-1.41	25.61
HDFC SIL ETF	88.48	0.33	88.19	Jupiter Life	1424.95	-1.22	1442.52
India Glycols	1220.95	32.00%	1217.01	DOMS Industries	2579.7	-1.19	2610.67

* Stocks crossing above its Simple Moving Average (200DMA)

* Stocks crossing below its Simple Moving Average (200DMA)

Sectoral Indices - Gainers Losers for the day



Stocks witnessing a volume surge as compared to their 5 day average volur

Watch out for the stocks that have seen a huge spurt in its share price over the last three days

Volume Shockers - NSE					
Company name	LCP	% Chg	Volume	Avg Vol *	% Chg
Kaya	245.71	3.56	349236	6240	5496
Keynote Finance	398.6	9.21	317996	8326	3719
Mastek	2137.3	8.27	5123399	142734	3489
Transformers	518.7	5	3472418	131705	2537
Starteck Financ	324.9	8.77	52006	2049	2439
Jyothy Labs	379.6	10.27	14072847	604797	2227
Rossell India	73.64	6.48	671090	29061	2209
RamkrishnaForge	740.4	1.53	13460862	689797	1851
Precot	350.55	-2.69	71485	3752	1805
Dr Reddys Labs	1094.05	-1.25	5510421	296967	1756
BEW Engineering	164.5	0.7	19000	1125	1589
Sundram	892.65	5.19	1023802	64845	1479
Muthoot Finance	2139.95	-6.66	5886218	373833	1475
Jindal Drilling	663.75	-6.21	543134	34855	1458
Vijaya Diagnost	970.95	-4.44	3025411	222272	1261
Redington	204.72	1.73	12403580	939548	1220
SML Isuzu	1688.65	4.58	157951	12295	1185
RHI Magnesita	458.6	-1.16	2373331	192099	1135
Kamat Hotels	235.1	-1.07	541546	48751	1011
Anupam	713.45	-0.5	851188	77852	993

* the Average Volume of last 5 days

Price Shockers - NSE					
Company name	LCP	3 days *	% Chg	Volume	
Cura Tech	43.93	1.6	2645.63	2	
Binani Ind	14.48	10.8	34.07	313149	
Securecloud Tec	26.37	20.79	26.84	85256	
One Point One S	56.6	45.16	25.33	15393557	
Keynote Finance	398.6	325.5	22.46	317996	
Shreeoswal Seed	14.56	12.55	16.02	49129	
Nacl Industries	156.14	134.89	15.75	112246	
Pattech Fitwell	77.15	66.85	15.41	1500	
Starteck Financ	324.9	282	15.21	52006	
Chemfab Alkalis	812.3	708.4	14.67	9460	
Jyothy Labs	379.6	331.7	14.44	14072847	
Innomet Advance	130	114	14.04	21600	
S Chand and Co	195.26	172.11	13.45	237170	
SPML Infra	205.67	182.13	12.92	1270477	
Parsvnath	24.23	21.6	12.18	2178207	
Focus Lighting	105.97	94.5	12.14	333637	
Focus Lighting	105.97	94.5	12.14	333637	
Perfect Infra	12.05	10.75	12.09	27000	
NK Industries	69.86	62.52	11.74	1541	
V R Infraspac	260	232.7	11.73	800	

* the % price rise of the last 3 days

Nifty 50 stocks - Summary Details											
Symbol	LTP	Chng	% Chng	Volume (lacs)	Turnover (crs.)	52w High	Diff with 52w H	52w Low	Diff with 52w L	365 days % chng	30 days % chng
NIFTY 50	22399.15	-136.70	-0.61%	3838.00	28994.90	26277.35	14.76%	21281.45	5.25%	-0.07%	-0.58%
ADANIANT	2243.45	-42.25	-1.85%	10.02	224.33	3743.90	40.08%	2025.00	10.79%	1.70%	-29.12%
ADANIPTS	1135.00	3.65	0.32%	15.37	172.74	1621.40	30.00%	995.65	14.00%	-1.15%	-16.11%
APOLLOHOSP	6840.85	85.25	1.26%	6.81	464.24	7545.35	9.34%	5693.20	20.16%	8.68%	7.10%
ASIANPAINT	2409.15	14.95	0.62%	11.86	286.51	3394.90	29.04%	2124.75	13.39%	5.47%	-17.21%
AXISBANK	1063.40	-14.45	-1.34%	66.90	712.94	1339.65	20.62%	933.50	13.92%	3.87%	0.17%
BAJAJ-AUTO	7576.45	78.40	1.05%	2.61	197.54	12774.00	40.69%	7089.35	6.87%	-1.01%	-16.97%
BAJAJFINSV	1900.00	-3.20	-0.17%	13.95	264.42	2029.90	6.40%	1419.05	33.89%	3.14%	12.67%
BAJFINANCE	8745.00	-77.25	-0.88%	10.49	914.81	9260.05	5.56%	6375.70	37.16%	4.97%	22.90%
BEL	281.00	-0.45	-0.16%	113.89	318.67	340.50	17.47%	221.00	27.15%	1.61%	25.90%
BHARTIARTL	1715.10	-5.30	-0.31%	56.01	962.13	1779.00	3.59%	1183.10	44.97%	5.50%	42.81%
CIPLA	1416.00	-16.55	-1.16%	17.01	240.57	1702.05	16.81%	1317.25	7.50%	-1.78%	-2.04%
COALINDIA	375.25	-7.60	-1.99%	57.81	217.90	543.55	30.96%	349.25	7.44%	0.58%	-14.43%
DRREDDY	1093.25	-14.70	-1.33%	55.11	601.45	1421.49	23.09%	1020.00	7.18%	-2.23%	-82.06%
EICHERMOT	5254.95	23.60	0.45%	4.72	248.34	5575.50	5.75%	4011.60	30.99%	2.56%	24.39%
GRASIM	2568.00	-22.05	-0.85%	4.94	126.53	2877.75	10.76%	2171.60	18.25%	7.59%	13.56%
HCLTECH	1380.70	-22.65	-1.61%	33.07	455.57	2012.20	31.38%	1235.00	11.80%	-9.92%	-8.88%
HDFCBANK	1765.30	-3.85	-0.22%	112.27	1977.80	1880.00	6.10%	1426.80	23.72%	4.73%	14.39%
HDFCLIFE	685.50	-0.25	-0.04%	30.55	209.36	761.20	9.94%	511.40	34.04%	9.68%	8.06%
HEROMOTOCO	3621.45	47.30	1.32%	5.85	211.32	6246.25	42.02%	3344.00	8.30%	-2.15%	-22.22%
HINDALCO	564.25	-4.10	-0.72%	70.09	393.23	772.65	26.97%	546.45	3.26%	-17.79%	-1.46%
HINDUNILVR	2349.00	59.75	2.61%	29.89	699.86	3035.00	22.60%	2136.00	9.97%	3.84%	0.89%
ICICIBANK	1304.00	4.10	0.32%	130.06	1685.68	1373.00	5.03%	1048.10	24.42%	7.03%	19.57%
INDUSINDBK	678.30	-1.35	-0.20%	42.43	287.63	1576.35	56.97%	606.00	11.93%	-27.45%	-56.66%
INFY	1402.00	-26.80	-1.88%	85.47	1193.29	2006.45	30.13%	1307.00	7.27%	-15.26%	-3.24%
ITC	416.15	3.60	0.87%	217.85	907.12	528.50	21.26%	390.15	6.66%	2.14%	-3.86%
JIOFIN	221.10	-3.71	-1.65%	193.70	427.09	394.70	43.98%	198.65	11.30%	1.35%	-39.12%
JSWSTEEL	950.00	-4.60	-0.48%	17.74	167.59	1074.90	11.62%	823.80	15.32%	-5.59%	8.92%
KOTAKBANK	2058.00	2.85	0.14%	39.20	805.92	2202.50	6.56%	1543.85	33.30%	6.19%	14.92%
LT	3062.00	-99.10	-3.13%	44.51	1372.54	3963.50	22.75%	2965.30	3.26%	-2.58%	-16.98%
M&M	2530.50	6.85	0.27%	33.47	851.03	3270.95	22.64%	1998.20	26.64%	-7.49%	21.44%
MARUTI	11480.00	21.10	0.18%	2.55	292.75	13680.00	16.08%	10725.00	7.04%	-1.76%	-10.93%
NESTLEIND	2350.00	74.60	3.28%	18.53	432.90	2778.00	15.41%	2110.00	11.37%	1.65%	-8.91%
NTPC	350.65	-2.30	-0.65%	74.61	261.73	448.45	21.81%	292.80	19.76%	7.10%	-2.90%
ONGC	223.00	-3.66	-1.61%	168.89	374.94	345.00	35.36%	205.00	8.78%	-2.68%	-16.18%
POWERGRID	294.10	5.15	1.78%	213.42	629.61	366.25	19.70%	247.30	18.92%	9.74%	2.56%
RELIANCE	1187.50	5.30	0.45%	102.22	1209.32	1608.80	26.19%	1114.85	6.52%	-5.41%	-60.22%
SBILIFE	1482.70	-5.30	-0.36%	10.48	155.88	1936.00	23.41%	1307.70	13.38%	5.41%	-2.03%
SBIN	742.45	-26.15	-3.40%	113.18	850.33	912.00	18.59%	680.00	9.18%	4.89%	0.04%
SHRIRAMFIN	624.75	-16.70	-2.60%	92.35	580.61	730.45	14.47%	438.60	42.44%	1.68%	-75.03%
SUNPHARMA	1651.75	-36.60	-2.17%	34.82	579.46	1960.35	15.74%	1377.20	19.94%	4.91%	5.54%
TATACONSUM	1087.55	17.80	1.66%	22.74	246.63	1250.10	13.00%	882.90	23.18%	11.19%	-5.94%
TATAMOTORS	584.50	-4.35	-0.74%	174.81	1026.96	1179.00	50.42%	535.75	9.10%	-9.17%	-41.88%
TATASTEEL	127.35	-2.93	-2.25%	733.96	932.57	184.60	31.01%	122.62	3.86%	-14.04%	-21.14%
TCS	3239.00	-53.95	-1.64%	29.90	971.29	4592.25	29.47%	3056.05	5.99%	-8.81%	-17.11%
TECHM	1270.95	-43.45	-3.31%	37.25	475.69	1807.70	29.69%	1162.95	9.29%	-11.92%	3.89%
TITAN	3178.95	56.65	1.81%	12.16	384.42	3867.00	17.79%	2925.00	8.68%	1.39%	-16.71%
TRENT	4625.70	-141.50	-2.97%	15.99	742.62	8345.00	44.57%	3894.90	18.76%	-4.65%	21.25%
ULTRACEMCO	11367.00	96.55	0.86%	2.31	261.60	12145.35	6.41%	9250.00	22.89%	6.50%	14.26%
WIPRO	236.80	-10.45	-4.23%	190.63	450.75	324.60	27.05%	208.50	13.57%	-13.18%	-48.48%
ETERNAL	211.15	-4.04	-1.88%	253.59	536.66	304.70	30.70%	146.30	44.33%	#VALUE!	#VALUE!

Disclaimer / Disclosures

ANALYST CERTIFICATION

I, Mrs. Vaishali Parekh B.com, Research Analyst, author and the name subscribed to this report, hereby certify that all of the views expressed in this research report accurately reflect our views about the subject issuer(s) or securities. We also certify that no part of our compensation was, is, or will be directly or indirectly related to the specific recommendation(s) or view(s) in this report.

Terms & conditions and other disclosures:

Prabhudas Lilladher Pvt. Ltd, Mumbai, India (hereinafter referred to as "PL") is engaged in the business of Stock Broking, Portfolio Manager, Depository Participant and distribution for third party financial products. PL is a subsidiary of Prabhudas Lilladher Advisory Services Pvt Ltd. which has its various subsidiaries engaged in business of commodity broking, investment banking, financial services (margin funding) and distribution of third party financial/other products, details in respect of which are available at www.plindia.com

This document has been prepared by the Research Division of PL and is meant for use by the recipient only as information and is not for circulation. This document is not to be reported or copied or made available to others without prior permission of PL. It should not be considered or taken as an offer to sell or a solicitation to buy or sell any security.

The information contained in this report has been obtained from sources that are considered to be reliable. However, PL has not independently verified the accuracy or completeness of the same. Neither PL nor any of its affiliates, its directors or its employees accepts any responsibility of whatsoever nature for the information, statements and opinion given, made available or expressed herein or for any omission therein.

Recipients of this report should be aware that past performance is not necessarily a guide to future performance and value of investments can go down as well. The suitability or otherwise of any investments will depend upon the recipient's particular circumstances and, in case of doubt, advice should be sought from an independent expert/advisor.

Either PL or its affiliates or its directors or its employees or its representatives or its clients or their relatives may have position(s), make market, act as principal or engage in transactions of securities of companies referred to in this report and they may have used the research material prior to publication.

PL may from time to time solicit or perform investment banking or other services for any company mentioned in this document.

PL is registered as Research Analyst under Securities and Exchange Board of India (Research Analysts) Regulations, 2014 PL submits that no material disciplinary action has been taken on us by any Regulatory Authority impacting Equity Research Analysis activities.

PL or its research analysts or its associates or his relatives do not have any financial interest in the subject company.

PL or its research analysts or its associates or his relatives do not have actual/beneficial ownership of one per cent or more securities of the subject company at the end of the month immediately preceding the date of publication of the research report.

PL or its research analysts or its associates or his relatives do not have any material conflict of interest at the time of publication of the research report.

PL or its associates might have received compensation from the subject company in the past twelve months.

PL or its associates might have managed or co-managed public offering of securities for the subject company in the past twelve months or mandated by the subject company for any other assignment in the past twelve months.

PL or its associates might have received any compensation for investment banking or merchant banking or brokerage services from the subject company in the past twelve months.

PL or its associates might have received any compensation for products or services other than investment banking or merchant banking or brokerage services from the subject company in the past twelve months PL or its associates might have received any compensation or other benefits from the subject company or third party in connection with the research report.

PL encourages independence in research report preparation and strives to minimize conflict in preparation of research report. PL or its analysts did not receive any compensation or other benefits from the subject Company or third party in connection with the preparation of the research report. PL or its Research Analysts do not have any material conflict of interest at the time of publication of this report.

It is confirmed that Mrs.Vaishali Parekh B.com, Research Analyst of this report has not received any compensation from the companies mentioned in the report in the preceding twelve months compensation of our Research Analysts is not based on any specific merchant banking, investment banking or brokerage service transactions.

The Research analysts for this report certifies that all of the views expressed in this report accurately reflect his or her personal views about the subject company or companies and its or their securities, and no part of his or her compensation was, is or will be, directly or indirectly related to specific recommendations or views expressed in this report.

The research analysts for this report has not served as an officer, director or employee of the subject company PL or its research analysts have not engaged in market making activity for the subject company

Our sales people, traders, and other professionals or affiliates may provide oral or written market commentary or trading strategies to our clients that reflect opinions that are contrary to the opinions expressed herein, and our proprietary trading and investing businesses may make investment decisions that are inconsistent with the recommendations expressed herein. In reviewing these materials, you should be aware that any or all of the foregoing, among other things, may give rise to real or potential conflicts of interest.

PL and its associates, their directors and employees may (a) from time to time, have a long or short position in, and buy or sell the securities of the subject company or (b) be engaged in any other transaction involving such securities and earn brokerage or other compensation or act as a market maker in the financial instruments of the subject company or act as an advisor or lender/borrower to the subject company or may have any other potential conflict of interests with respect to any recommendation and other related information and opinions.