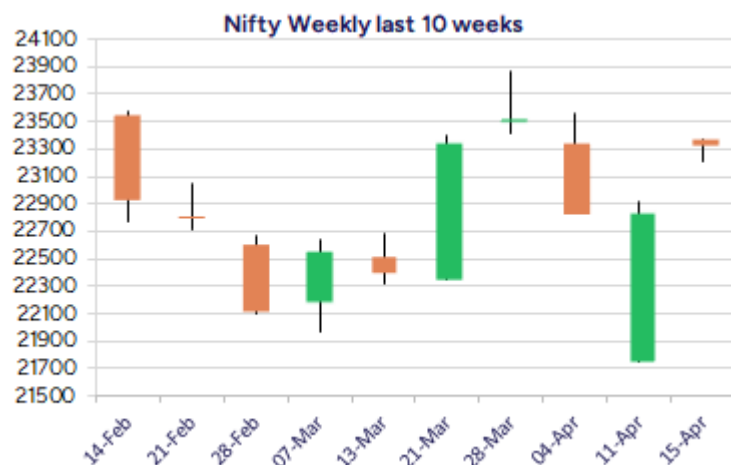
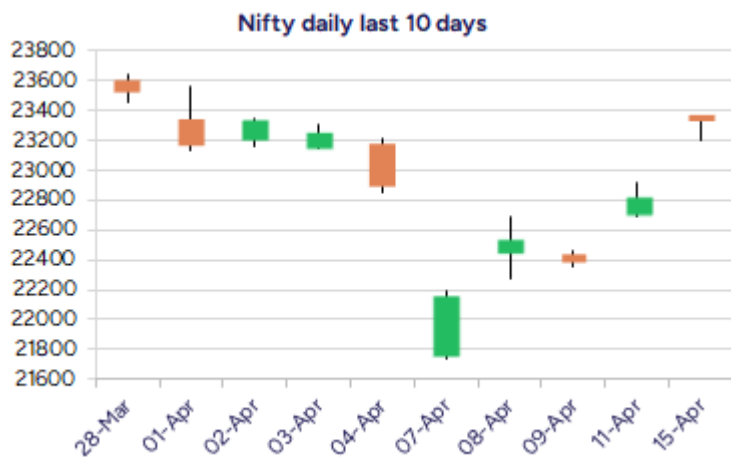


Date: 16th April 2025

* Sensex 76734.89 + 1577.63

* Nifty 23328.55 + 500.00

* Bank Nifty 52379.50 + 1377.15



*Blue candle → Close rate > Open rate * Red candle → Close rate < Open rate

Market Preview

Nifty ends above 23300 zone; sentiment eases out

Nifty witnessed another day of significant gain to decisively breach above the 23300 zone with sentiment getting better and better. BankNifty witnessed a decent gain to cross above the resistance zone of 52000 level and has indicated strength to anticipate for further rise. The market breadth was once again very much strong with the advance decline indicating a ratio of 11:1 at close.

Market Forecast

Nifty daily range 23200-23600

Nifty, once again witnessed a big gap up opening to breach decisively above the 50EMA level of 23000 zone to improve the bias along with the sentiment getting better and ended the session on a strong note above 23300 zone. The index got significant support from the broader markets as well to strengthen the overall trend anticipating for further rise in the coming days with target of 24000 zone visible.

BankNifty, straightaway opened above the tough barrier zone of 52000 level to signify strength and has much upside potential to carry on with the positive move further ahead for targets of 53800 and 54400 levels anticipated in the coming days. The index would now have the important zone of the 200 period MA at 51000 level as the crucial support and would need to sustain above this level to maintain the overall bias intact.

The support for the day is seen at 23200 levels while the resistance is seen at 23600 levels. BankNifty would have the daily range of 51800-53000 levels.

Indices	Period	Closing	% Chng	Trend	Reversal	2 Sup	1 Sup	Pivot	1 Res	2 Res
Nifty	Daily	23328.55	2.19%	2	22629.50	23140	23234	23301	23396	23463
	Weekly	22828.55	-0.33%	4	22677.05	21339	22084	22503	23248	23668
	Monthly	23519.35	0.05%	-6	25020.35	21213	22366	23118	24271	25022
Bank Nifty	Daily	52379.50	2.70%	1	51530.55	51620	52000	52243	52623	52866
	Weekly	51002.35	-0.97%	4	50007.55	48397	49700	50471	51774	52546
	Monthly	51564.85	3.99%	-6	52195.95	46118	48841	50451	53175	54785
Sensex	Daily	76734.89	2.10%	2	74436.15	76220	76477	76693	76950	77165
	Weekly	75157.26	-0.28%	4	74716.00	70007	72582	74025	76600	78042
	Monthly	77414.92	-0.11%	-6	82130.50	70156	73785	76263	79893	82371

Daily Trend turned Up

Scrip Name	LCP	Curr Trnd	Reversal
ADANIENT	2418.2	-5	2320.75
AMARAJABAT	994.6	-11	979.35
AXISBANK	1112.8	-10	1082
BHARATFORG	1073.1	-10	1003.85
BHEL	221.8	-5	213.65
CANBK	92.69	-5	90.85
ENGINEERSIN	169.3	-2	161.5
GLAXO	2878.2	-12	2743.65
GREAVESCOT	191.81	-9	182
GSFC	185.94	-5	176.2
ICICIBANK	1350.2	-11	1318.15
INDHOTEL	836.35	-5	793.65

* Trends turned Up after a significant period

Daily Trend turned Up

Scrip Name	LCP	Curr Trnd	Reversal
JINDALSTEL	845.15	-12	816.65
KEC	711.4	-9	674.3
CUMMINS	2920.7	-6	2835.7
LARSENTOUBRO	3257.6	-8	3165.65
MOTHERSUMI	127.63	-9	117.4
NATIONALUM	151.42	-14	146.75
NCC	215.91	-5	209.45
PFCL	425.55	-5	403.7
SYNGENE	721.4	-5	711.5
TATAMOTORS	622.2	-10	596.25
TATAPOWER	378.5	-5	367.55
VEDL	395.8	-9	386.65

* Trends turned Up after a significant period

Gainers - Losers (Nifty 500 Stocks)

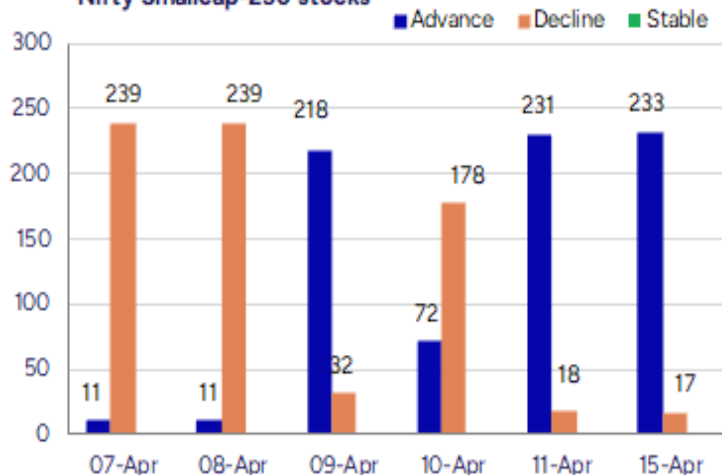
Gainers

Company Name	Last Price	% Gain	Volume
Intellect Desig	751.8	13.81	4331554
Data Patterns	1878.7	11.7	6862116
Valor Estate	192.22	10.17	9406483
Akums Drugs P	477.15	9.99	1226707
PTC Industries	14560	9.7	17199
Mazagon Dock	2661.3	9.4	7673596
HFCL	82.52	8.56	21436023

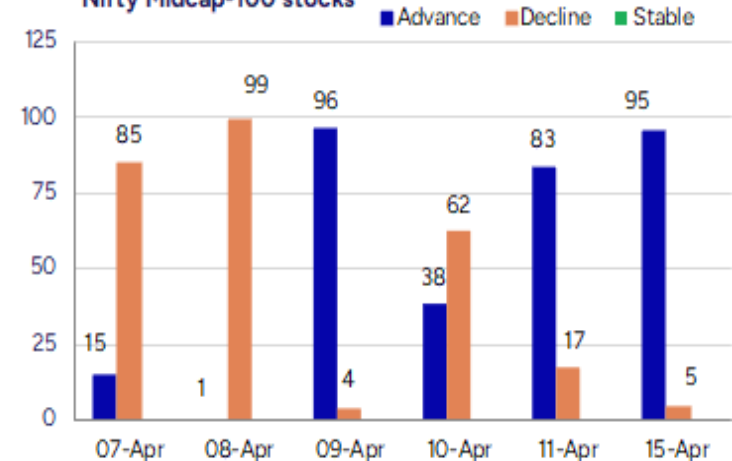
Losers

Company Name	Last Price	% Loss	Volume
Aster DM Health	489.45	-2.17	1225012
SUMITOMO	555.25	-1.77	698173
Atul	5627	-1.75	309263
Campus Active	234.75	-1.49	1025607
Anand Rathi	1773.9	-1.47	83398
Max Healthcare	1074.1	-1.4	4024878
Vedant Fashions	791.75	-1.33	194738

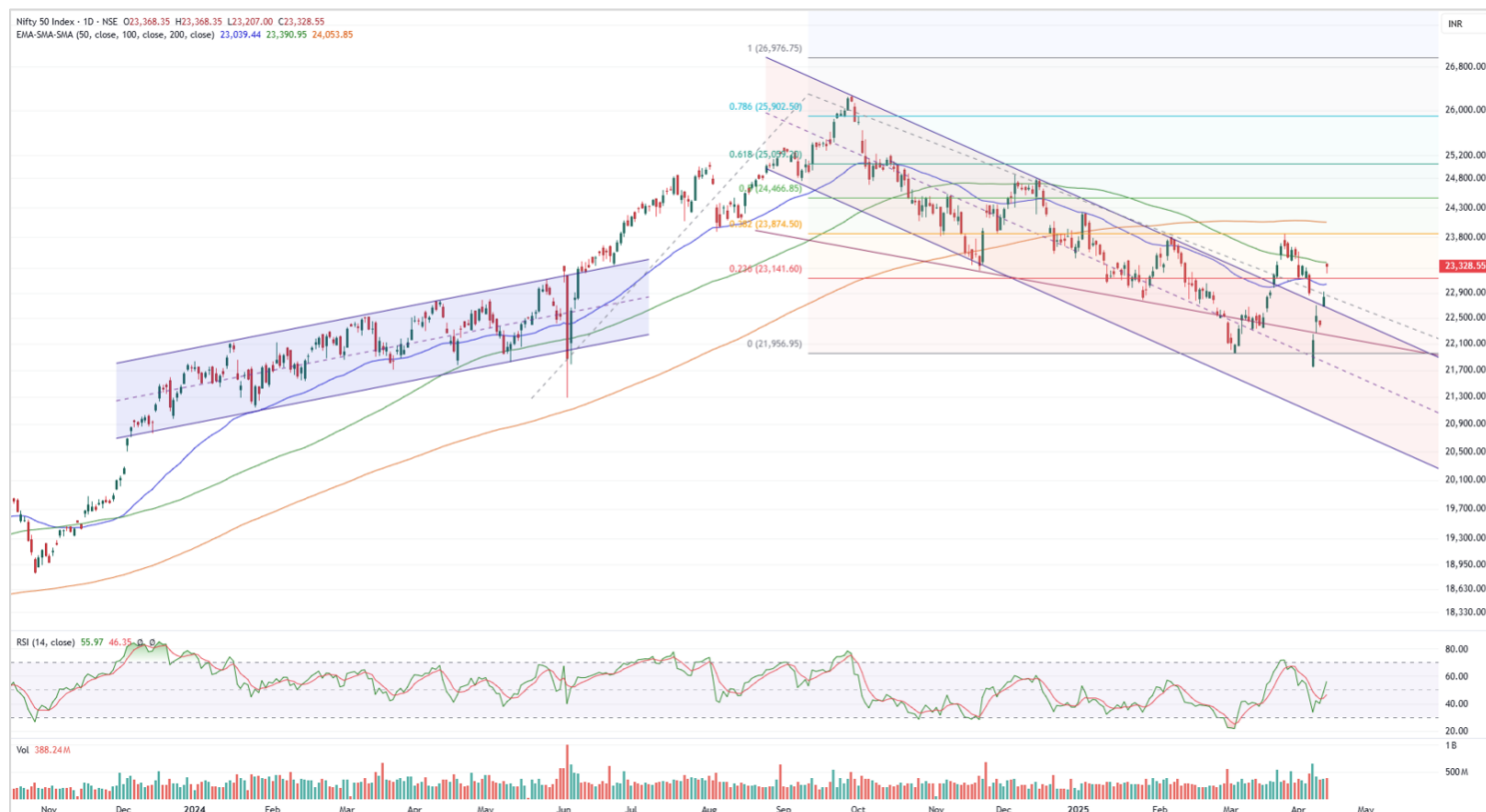
Nifty Smallcap-250 stocks



Nifty Midcap-100 stocks



Nifty Daily chart with RSI indicator



BankNifty Daily chart with RSI indicator



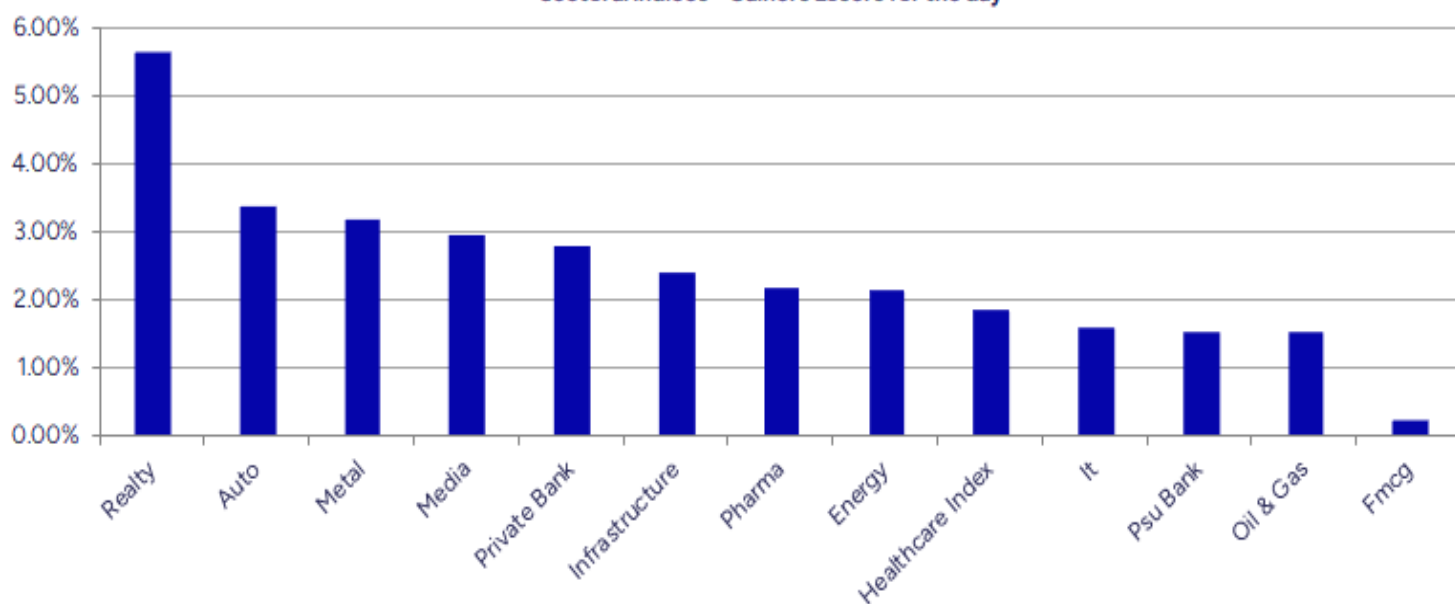
Breakouts - Cross above 200 DMA			
Company Name	LCP	Change %	200 DMA
Trejhara	249.56	10.18	226.51
Goldiam Inter	381.3	10.00	346.64
PTC Industries	14560	8.71	13393.61
Home First	1138.1	6.69	1066.77
Zuari Agro Chem	220.2	6.67	206.44
Somi Conveyor	188.76	6.40	177.41
Kaynes Tech	5520.9	6.38	5189.62
Tokyo Plast	128.34	5.82	121.28
Kingfa Science	3190.9	5.06	3037.17
DSP NiftyBank	54.17	4.70	51.74
DJ Mediaprint	135.48	4.41	129.76
EID Parry	842.4	4.36	807.21
Arihant Super	408	4.35	390.99
Dixon Technolog	14931	4.06	14348.51
Refex Ind	426.1	4.06	409.46
Balrampur Chini	551.2	3.97	530.16
EPack Durables	393.15	3.91	378.37
JK Lakshmi Cem	828.7	374.00%	798.85

* Stocks crossing above its Simple Moving Average (200DMA)

Breakdown - Cross below 200 DMA			
Company Name	LCP	Change %	200 DMA
Rajgor Castor	19.5	-2.26	29.08
Transtel Seati	99.2	-1.54	78.81
Maxposure	58.95	-1.22	89.48
GMM Pfaunder	1050	-0.95	1274.34
Gillanders Arbu	99.29	-0.79	101.49
Tamil Telecom	8.82	-0.79	10.4
Axita Cotton	10.01	-0.40	13.66
Bata India	1229.8	-0.27	1383.61
IFB Agro	475.3	-0.18	548.11
Vedant Fashions	791.75	-0.16	1141.92

* Stocks crossing below its Simple Moving Average (200DMA)

Sectoral Indices - Gainers Losers for the day



Stocks witnessing a volume surge as compared to their 5 day average volume

Watch out for the stocks that have seen a huge spurt in its share price over the last three days

Volume Shockers - NSE					
Company name	LCP	% Chg	Volume	Avg Vol *	% Chg
Anupam	749.55	4.94	265622	2066	12759
Sujala Trading	73.11	-2.95	181489	2840	6291
Systematix Corp	155.7	7.94	90924	1529	5846
Anka Ind	40.45	4.98	96914	1886	5039
Tavernier	56.17	-1.21	101097	2041	4853
Godrej Prop	2016.6	3.53	341951	7740	4318
Dhanashree Elec	130.2	5	34119	1120	2947
Siemens	2839.8	4.08	107887	4326	2394
Somi Conveyor	187.55	9.04	32681	1424	2195
Keynote Finance	452.15	2.96	25989	1175	2113
Royale Manor	49.63	9.39	114130	5357	2030
Transformers	567.25	4.24	230753	11602	1889
Shriram Finance	672.8	5.35	249458	13932	1690
Eicher Motors	5531.85	3.39	65061	3680	1668
Hazoor	49.34	10.41	3842595	218524	1658
ECML	47.25	0.53	50012	3008	1563
Muthoot Finance	2050.65	1.65	84780	5263	1511
HEG	475.4	4.74	64813	4095	1483
AAYUSH WELLNESS	68.97	4.99	597748	41467	1342
Gokaldas Export	838	6.96	62861	4395	1330

* the Average Volume of last 5 days

Price Shockers - NSE				
Company name	LCP	3 days *	% Chg	Volume
The Investment	146.4	122	20	20718
Emmbi Ind	106.14	88.45	20	48698
Pondy Oxides	729.65	608.05	20	122494
Rama Phosphates	109.18	90.99	19.99	36393
Dhani Services	64.49	54.57	18.18	1406542
Autoline Ind	85.42	72.41	17.97	39425
Jubilant Agri	1277.3	1089.2	17.27	1516
Goldiam Inter	381.85	327	16.77	554670
Trejhara	249.55	216.35	15.35	40249
S H Kelkar	201.75	177.1	13.92	252492
Intellect Desig	752.05	660.5	13.86	86541
Magellanic	66.94	58.88	13.69	282185
Navkar Corp	95.65	84.7	12.93	137429
Bodal Chemicals	67.02	60.12	11.48	101199
Kaya	288.55	259.2	11.32	6899
Supreme Holding	104.32	93.72	11.31	129046
Sharda Crop	551.55	495.55	11.3	55879
Paradeep Phosp	133.35	119.9	11.22	462361
VIP Clothing	41.94	37.89	10.69	105426
Hazoor	49.34	44.69	10.41	3842595

* the % price rise of the last 3 days

Nifty 50 stocks - Summary Details											
Symbol	LTP	Chng	% Chng	Volume (lacs)	Turnover (crs.)	52w High	Diff with 52w H	52w Low	Diff with 52w L	365 days % chng	30 days % chng
NIFTY 50	23328.55	500.00	2.19%	3883.22	34216	26277	11.22%	21281	9.62%	1.93%	1.37%
ADANIENT	2415.90	94.50	4.07%	11.45	276	3744	35.47%	2025	19.30%	4.52%	-27.68%
ADANIPTS	1212.80	48.20	4.14%	31.77	384	1621	25.20%	996	21.81%	4.05%	-13.36%
APOLLOHOSP	6896.50	115.50	1.70%	7.78	537	7545	8.60%	5693	21.14%	11.06%	5.84%
ASIANPAINT	2419.00	25.40	1.06%	11.41	275	3395	28.75%	2125	13.85%	7.27%	-16.15%
AXISBANK	1115.50	46.50	4.35%	93.20	1033	1340	16.73%	934	19.50%	5.82%	-0.42%
BAJAJ-AUTO	7984.50	215.50	2.77%	3.88	310	12774	37.49%	7089	12.63%	3.52%	-14.30%
BAJAJFINSV	1971.00	24.70	1.27%	12.51	247	2030	2.90%	1419	38.90%	7.68%	14.58%
BAJFINANCE	9138.00	216.50	2.43%	12.63	1155	9290	1.64%	6376	43.33%	5.95%	23.40%
BEL	293.60	8.60	3.02%	195.12	570	341	13.77%	221	32.85%	1.76%	22.06%
BHARTIARTL	1798.00	41.40	2.36%	103.13	1856	1820	1.21%	1210	48.55%	7.60%	43.33%
CIPLA	1481.90	18.80	1.28%	17.20	254	1702	12.93%	1317	12.50%	0.08%	4.74%
COALINDIA	395.20	3.10	0.79%	43.71	173	544	27.29%	349	13.16%	3.65%	-13.94%
DRREDDY	1156.00	46.50	4.19%	26.83	308	1421	18.68%	1020	13.33%	0.14%	-81.76%
EICHERMOT	5549.50	198.50	3.71%	5.42	298	5576	0.47%	4194	32.33%	6.69%	24.37%
ETERNAL	222.90	5.70	2.62%	450.34	1000	305	26.85%	146	52.36%	#VALUE!	#VALUE!
GRASIM	2725.00	73.70	2.78%	8.15	221	2878	5.31%	2172	25.48%	11.86%	17.62%
HCLTECH	1426.00	35.40	2.55%	32.65	464	2012	29.13%	1235	15.47%	-9.40%	-8.61%
HDFCBANK	1865.60	58.80	3.25%	246.49	4601	1880	0.77%	1427	30.75%	5.87%	18.95%
HDFCLIFE	705.35	19.80	2.89%	23.06	162	761	7.34%	511	37.93%	10.15%	10.84%
HEROMOTOCO	3808.10	142.10	3.88%	6.04	228	6246	39.03%	3344	13.88%	3.88%	-17.45%
HINDALCO	618.05	17.75	2.96%	48.72	299	773	20.01%	546	13.10%	-11.38%	0.28%
HINDUNILVR	2368.00	1.80	0.08%	30.43	718	3035	21.98%	2136	10.86%	8.80%	6.00%
ICICIBANK	1350.40	38.70	2.95%	152.03	2049	1373	1.65%	1048	28.84%	4.93%	18.77%
INDUSINDBK	735.50	46.00	6.67%	124.53	905	1563	52.93%	606	21.37%	2.55%	-55.68%
INFY	1430.40	20.90	1.48%	101.79	1450	2006	28.71%	1307	9.44%	-10.79%	-5.07%
ITC	420.35	-120	-0.28%	116.86	492	529	20.46%	390	7.74%	2.31%	-1.99%
JIOFIN	239.05	9.03	3.93%	276.64	653	395	39.44%	199	20.34%	3.33%	-38.20%
JSWSTEEL	1010.30	20.00	2.02%	12.88	130	1075	6.01%	824	22.64%	-1.09%	14.29%
KOTAKBANK	2124.00	12.80	0.61%	56.36	1193	2203	3.56%	1544	37.58%	6.35%	16.44%
LT	3259.00	143.00	4.59%	21.61	702	3964	17.77%	2965	9.90%	-2.24%	-15.31%
M&M	2650.00	69.60	2.70%	32.88	875	3271	18.98%	1998	32.62%	-2.39%	24.60%
MARUTI	11825.00	225.00	1.94%	4.59	544	13680	13.56%	10725	10.26%	0.74%	-5.44%
NESTLEIND	2367.00	5.60	0.24%	7.81	185	2778	14.79%	2110	12.18%	7.73%	-6.89%
NTPC	362.70	2.60	0.72%	174.97	639	448	19.12%	293	23.87%	8.50%	-0.46%
ONGC	233.15	2.78	1.21%	121.02	281	345	32.42%	205	13.73%	2.19%	-13.30%
POWERGRID	305.00	0.90	0.30%	165.63	508	366	16.72%	247	23.33%	13.62%	10.48%
RELIANCE	1239.60	20.60	1.69%	133.79	1663	1609	22.95%	1115	11.19%	-2.32%	-58.46%
SBILIFE	1563.00	41.10	2.70%	13.63	213	1936	19.27%	1308	19.52%	9.84%	1.93%
SBIN	764.50	10.65	1.41%	78.59	602	912	16.17%	680	12.43%	3.57%	-1.62%
SHRIRAMFIN	671.85	33.05	5.17%	60.86	406	730	8.02%	439	53.18%	3.11%	-74.30%
SUNPHARMA	1705.20	17.60	1.04%	19.93	340	1960	13.02%	1377	23.82%	0.24%	9.58%
TATACONSUM	1102.70	4.80	0.44%	10.23	113	1250	11.79%	883	24.90%	16.04%	-4.48%
TATAMOTORS	622.50	27.45	4.61%	197.22	1228	1179	47.20%	536	16.19%	-9.22%	-41.58%
TATASTEEL	136.70	3.28	2.46%	389.68	530	185	25.95%	123	11.48%	-11.57%	-18.40%
TCS	3255.00	23.50	0.73%	35.12	1144	4592	29.12%	3056	6.51%	-7.96%	-19.24%
TECHM	1301.50	19.20	1.50%	15.12	196	1808	28.00%	1163	11.91%	-11.00%	3.23%
TITAN	3271.00	36.10	1.12%	11.22	367	3867	15.41%	2925	11.83%	7.47%	-10.62%
TRENT	4887.00	106.00	2.22%	15.88	777	8345	41.44%	3912	24.91%	-4.82%	17.93%
ULTRACEMCO	11710.00	207.00	1.80%	3.45	404	12145	3.58%	9250	26.59%	10.05%	19.17%
WIPRO	244.40	4.65	1.94%	106.95	260	325	24.71%	209	17.22%	-9.19%	-49.07%

Disclaimer / Disclosures

ANALYST CERTIFICATION

I, Mrs. Vaishali Parekh B.com, Research Analyst, author and the name subscribed to this report, hereby certify that all of the views expressed in this research report accurately reflect our views about the subject issuer(s) or securities. We also certify that no part of our compensation was, is, or will be directly or indirectly related to the specific recommendation(s) or view(s) in this report.

Terms & conditions and other disclosures:

Prabhudas Lilladher Pvt. Ltd, Mumbai, India (hereinafter referred to as "PL") is engaged in the business of Stock Broking, Portfolio Manager, Depository Participant and distribution for third party financial products. PL is a subsidiary of Prabhudas Lilladher Advisory Services Pvt Ltd. which has its various subsidiaries engaged in business of commodity broking, investment banking, financial services (margin funding) and distribution of third party financial/other products, details in respect of which are available at www.plindia.com

This document has been prepared by the Research Division of PL and is meant for use by the recipient only as information and is not for circulation. This document is not to be reported or copied or made available to others without prior permission of PL. It should not be considered or taken as an offer to sell or a solicitation to buy or sell any security.

The information contained in this report has been obtained from sources that are considered to be reliable. However, PL has not independently verified the accuracy or completeness of the same. Neither PL nor any of its affiliates, its directors or its employees accepts any responsibility of whatsoever nature for the information, statements and opinion given, made available or expressed herein or for any omission therein.

Recipients of this report should be aware that past performance is not necessarily a guide to future performance and value of investments can go down as well. The suitability or otherwise of any investments will depend upon the recipient's particular circumstances and, in case of doubt, advice should be sought from an independent expert/advisor.

Either PL or its affiliates or its directors or its employees or its representatives or its clients or their relatives may have position(s), make market, act as principal or engage in transactions of securities of companies referred to in this report and they may have used the research material prior to publication.

PL may from time to time solicit or perform investment banking or other services for any company mentioned in this document.

PL is registered as Research Analyst under Securities and Exchange Board of India (Research Analysts) Regulations, 2014 PL submits that no material disciplinary action has been taken on us by any Regulatory Authority impacting Equity Research Analysis activities.

PL or its research analysts or its associates or his relatives do not have any financial interest in the subject company.

PL or its research analysts or its associates or his relatives do not have actual/beneficial ownership of one per cent or more securities of the subject company at the end of the month immediately preceding the date of publication of the research report.

PL or its research analysts or its associates or his relatives do not have any material conflict of interest at the time of publication of the research report.

PL or its associates might have received compensation from the subject company in the past twelve months.

PL or its associates might have managed or co-managed public offering of securities for the subject company in the past twelve months or mandated by the subject company for any other assignment in the past twelve months.

PL or its associates might have received any compensation for investment banking or merchant banking or brokerage services from the subject company in the past twelve months.

PL or its associates might have received any compensation for products or services other than investment banking or merchant banking or brokerage services from the subject company in the past twelve months PL or its associates might have received any compensation or other benefits from the subject company or third party in connection with the research report.

PL encourages independence in research report preparation and strives to minimize conflict in preparation of research report. PL or its analysts did not receive any compensation or other benefits from the subject Company or third party in connection with the preparation of the research report. PL or its Research Analysts do not have any material conflict of interest at the time of publication of this report.

It is confirmed that Mrs.Vaishali Parekh B.com, Research Analyst of this report has not received any compensation from the companies mentioned in the report in the preceding twelve months compensation of our Research Analysts is not based on any specific merchant banking, investment banking or brokerage service transactions.

The Research analysts for this report certifies that all of the views expressed in this report accurately reflect his or her personal views about the subject company or companies and its or their securities, and no part of his or her compensation was, is or will be, directly or indirectly related to specific recommendations or views expressed in this report.

The research analysts for this report has not served as an officer, director or employee of the subject company PL or its research analysts have not engaged in market making activity for the subject company

Our sales people, traders, and other professionals or affiliates may provide oral or written market commentary or trading strategies to our clients that reflect opinions that are contrary to the opinions expressed herein, and our proprietary trading and investing businesses may make investment decisions that are inconsistent with the recommendations expressed herein. In reviewing these materials, you should be aware that any or all of the foregoing, among other things, may give rise to real or potential conflicts of interest.

PL and its associates, their directors and employees may (a) from time to time, have a long or short position in, and buy or sell the securities of the subject company or (b) be engaged in any other transaction involving such securities and earn brokerage or other compensation or act as a market maker in the financial instruments of the subject company or act as an advisor or lender/borrower to the subject company or may have any other potential conflict of interests with respect to any recommendation and other related information and opinions.