

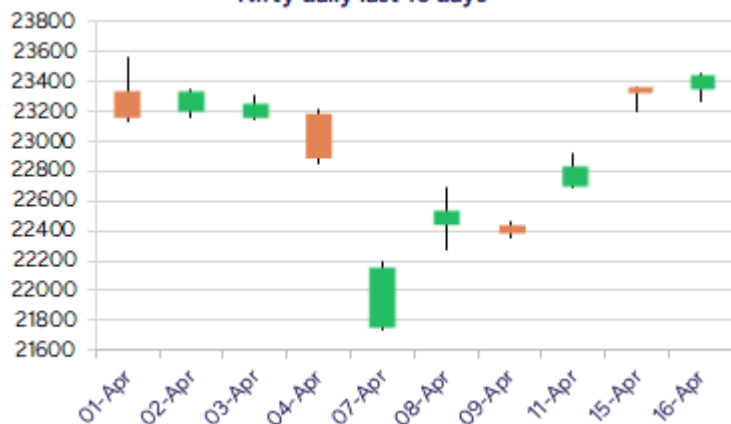
Date: 17th April 2025

* Sensex 77044.29 + 309.40

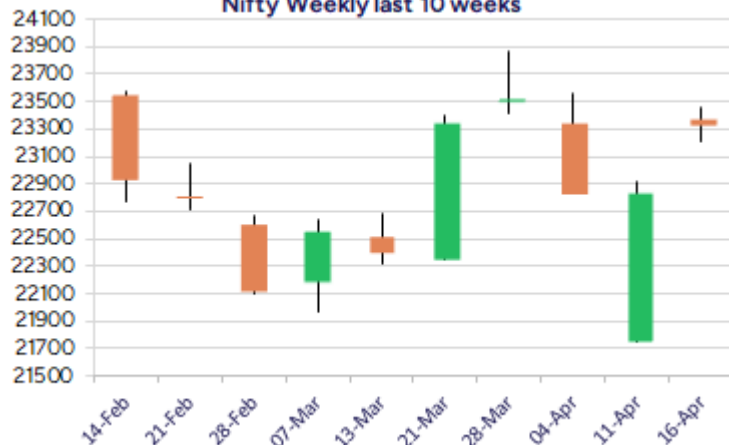
* Nifty 23437.20 + 108.65

* Bank Nifty 53117.75 + 738.25

Nifty daily last 10 days



Nifty Weekly last 10 weeks



*Blue candle → Close rate > Open rate * Red candle → Close rate < Open rate

Market Preview

Nifty extend gains; aiming towards 24000 zone

Nifty after witnessing a sluggish first half picked up momentum in the later part to carry on with the positive move to end above the 23400 zone with bias maintained positive. BankNifty gained strength racing to breach above the 53000 quite convincingly with further rise anticipated. The market breadth continue to remain strong with the advance decline indicating a ratio of 3:1 at close.

Market Forecast

Nifty daily range 23300-23700

Nifty, continued with the positive move extending the gains breaching above the 23400 zone with bias getting strong and in the coming sessions is aiming for the 24000 landmark. The undertone has become strong with the broader markets actively participating in the rally supporting the benchmark indices with near-term support maintained near the important 50EMA zone at 23000 level which needs to be sustained as of now.

BankNifty, gained much strength during the session decisively breaching above the 53000 zone and as compared to Nifty index has outperformed with most of the frontline banking stocks looking good and has much upside potential to carry on with the positive move further ahead. The PSU Banks are well positioned with indicators showing much improved bias and with significant volume participation visible, has triggered for further rise in the coming sessions. With support maintained near the 51000 level, the index is aiming to retest the previous peak zone of 54500 levels in the coming days.

The support for the day is seen at 23300 levels while the resistance is seen at 23700 levels. BankNifty would have the daily range of 52700-54000 levels.

Indices	Period	Closing	% Chng	Trend	Reversal	2 Sup	1 Sup	Pivot	1 Res	2 Res
Nifty	Daily	23437.20	0.47%	3	22703.35	23208	23323	23387	23502	23567
	Weekly	22828.55	-0.33%	4	22677.05	21339	22084	22503	23248	23668
	Monthly	23519.35	0.05%	-6	25020.35	21213	22366	23118	24271	25022
Bank Nifty	Daily	53117.75	1.41%	2	51859.90	52225	52671	52918	53364	53611
	Weekly	51002.35	-0.97%	4	50007.55	48397	49700	50471	51774	52546
	Monthly	51564.85	3.99%	-6	52195.95	46118	48841	50451	53175	54785
Sensex	Daily	77044.29	0.40%	3	74749.65	76333	76689	76899	77255	77466
	Weekly	75157.26	-0.28%	4	74716.00	70007	72582	74025	76600	78042
	Monthly	77414.92	-0.11%	-6	82130.50	70156	73785	76263	79893	82371

Daily Trend turned Up			
Scrip Name	LCP	Curr Trnd	Reversal
BANKBARODA	240.79	-5	236.95
BANKINDIA	115.48	-6	111.2
BERGEPAINT	542.05	-1	529.65
FEDERALBNK	194.92	-10	192.05
GODREJCP	1244.6	-1	1220.55
HAL	4209.2	-6	4190.25
MRPL	137.58	-10	134
PNB	98.83	-6	96.9
SBIN	771.75	-6	764.2
TCS	3273.8	-9	3240.5
TRENT	5035.5	-5	4951.35
UNIONBANK	127.26	-6	121.6

* Trends turned Up after a significant period

Daily Trend turned Down			
Scrip Name	LCP	Curr Trnd	Reversal
BIRLACORPN	1112.2	1	1128.65
FORTIS	649.95	1	654.95
LUPINLTD	1934.2	2	1970.45
MGL	1252.4	1	1302.65
SHREECEM	30800	1	31013.7
SUNPHARMA	1693.1	1	1693.25

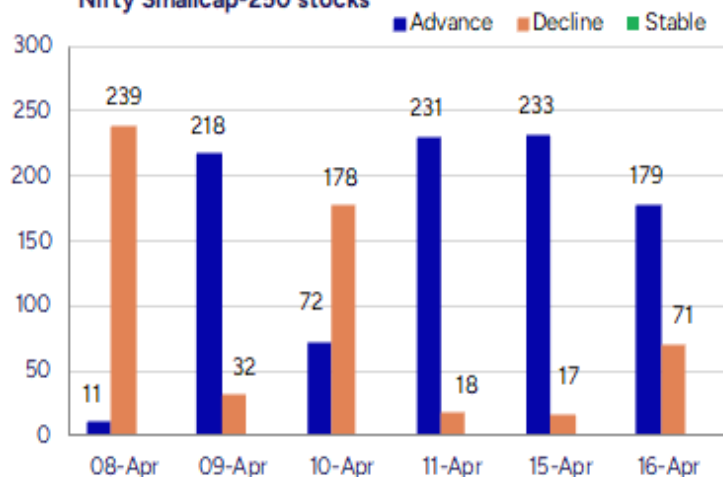
* Trends turned Down after a significant period

Gainers - Losers (Nifty 500 Stocks)

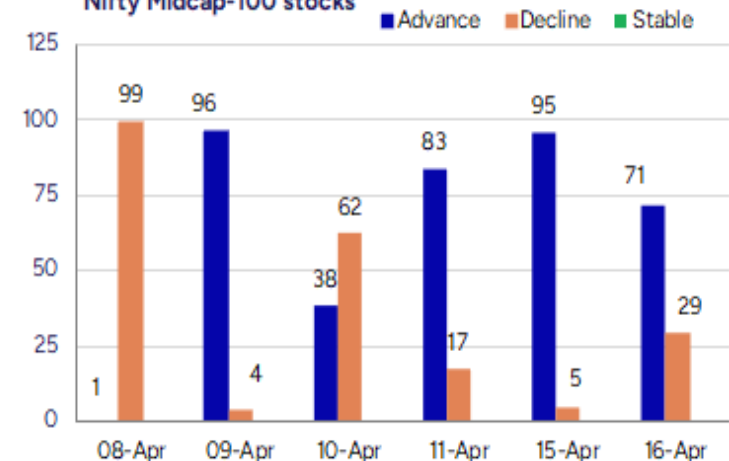
Gainers			
Company Name	Last Price	% Gain	Volume
JBM Auto	694.75	11.15	22076001
Guj Mineral	315	9.76	18911450
DOMS Industries	2878	9.48	880464
Engineers India	183.72	8.52	18488019
IndusInd Bank	788.25	7.11	31252589
NBCC (India)	95.8	6.72	56298845
Emcure Pharmace	1008.3	5.94	356758

Losers			
Company Name	Last Price	% Loss	Volume
Easy Trip	12.19	-8.55	113253449
Zydus Life	822.1	-6.91	10251029
Mahanagar Gas	1252.4	-4.8	2724502
AstraZeneca	8514.5	-4.05	59344
Lupin	1934.2	-3.91	2011566
Sona BLW	446.8	-3.41	1718495
Rainbow Child	1512.2	-3.39	278682

Nifty Smallcap-250 stocks



Nifty Midcap-100 stocks



Nifty Daily chart with RSI indicator



BankNifty Daily chart with RSI indicator



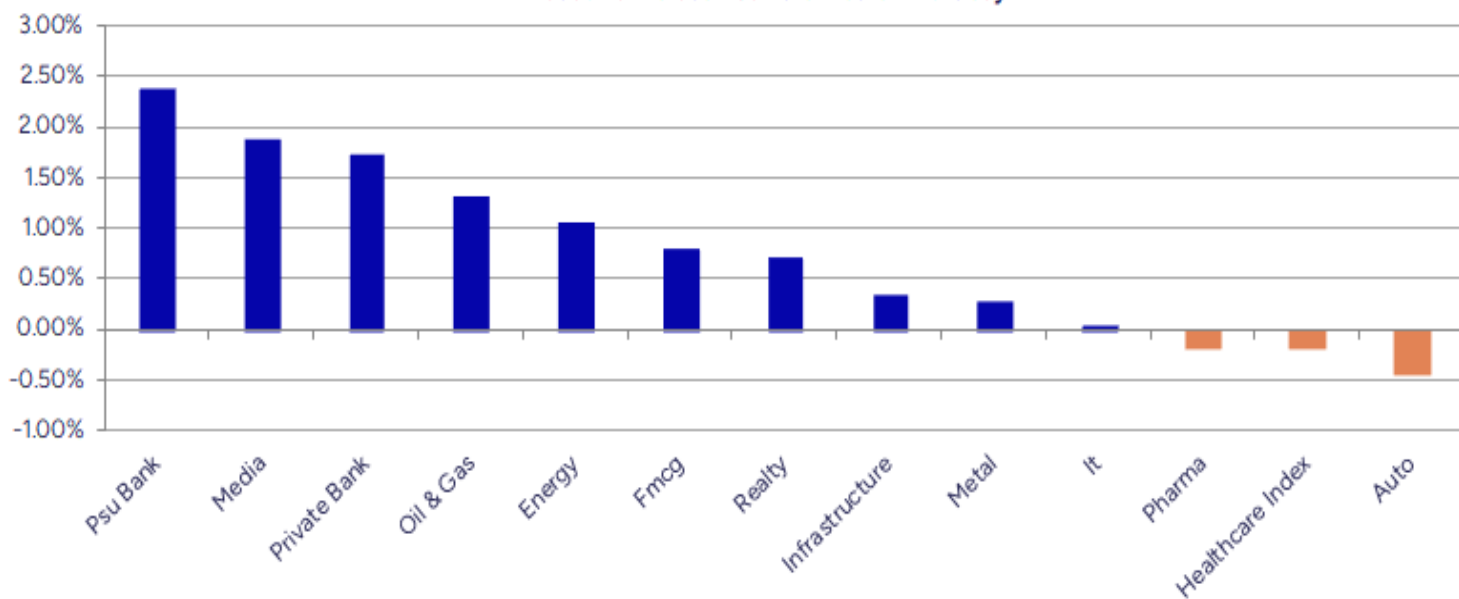
Breakouts - Cross above 200 DMA			
Company Name	LCP	Change %	200 DMA
Soma Textile	48.24	18.15	40.83
Archidply Decor	104.53	12.93	92.56
Raj Oil Mills	54.16	4.62	51.77
SMS Lifescience	1269.9	4.42	1216.1
DIC India	692.85	3.42	669.92
Womancart	300	3.37	290.23
DCB Bank	123.43	3.11	119.71
Sahana Systems	1531.5	3.07	1485.95
Axis Bank	1161.3	2.79	1129.8
SAR Televenture	288.75	2.68	281.2
Shah Alloys	68.89	2.51	67.2
Mankind Pharma	2520	2.48	2459.03
Aegis Logistics	806.3	2.25	788.58
SecMark Consult	103.58	2.16	101.39
Sandur Manganes	474.95	1.95	465.85
CreditAccess Gr	1082.15	1.93	1061.64
DCW	85.54	1.92	83.93
Vishnu Chemical	436.25	181.00%	428.49

* Stocks crossing above its Simple Moving Average (200DMA)

Breakdown - Cross below 200 DMA			
Company Name	LCP	Change %	200 DMA
JTL Ind.	66.98	-14.02	100.38
Uma Exports	80.08	-5.47	102.15
Lupin	1934.2	-3.46	2071.77
K2 Infragen	80.35	-2.70	199.33
Delta	59.63	-2.58	91.33
Redtape	144.79	-2.02	186.21
AB Cotspin	456.15	-1.74	373.69
Cellecor	56.25	-1.57	52.53
Le Merite	293.5	-1.52	238.98
Greenpanel Ind	234.98	-1.09	341.51
Kirloskar Bros	1633.2	-1.00	1935.73
Bajaj Holdings	11585	-0.91	10729.71
Brand Concepts	337.8	-0.86	513.8
LT Foods	351.35	-0.86	369.13
Welspun Invest	768.85	-0.79	873.23
Gokaldas Export	817.55	-0.76	943.67
Antony Waste	514.2	-0.68	649.75
Drone	115.25	-0.66	219.46

* Stocks crossing below its Simple Moving Average (200DMA)

Sectoral Indices - Gainers Losers for the day



Stocks witnessing a volume surge as compared to their 5 day average volume

Watch out for the stocks that have seen a huge spurt in its share price over the last three days

Volume Shockers - NSE					
Company name	LCP	% Chg	Volume	Avg Vol *	% Chg
Integrated Ind	18.07	-5.04	9788974	53284	18271
Binani Ind	19.48	9.99	206096	2199	9274
IGC Foils	6.23	4.88	500834	8873	5544
Sujala Trading	73.48	-2.46	153638	2840	5311
Shukra Pharma	19.55	4.99	1076819	22165	4758
Tavernier	55	-3.27	94876	2041	4548
Consecutive Inv	1.89	5	1928219	61786	3021
Anka Ind	40	3.82	56884	1886	2916
ETT	18.95	8.16	780942	32303	2318
Yuvraaj Hygiene	13.25	4.99	628028	30376	1968
Godrej Prop	2003.5	2.86	145495	7740	1780
Siemens	2826	3.58	79392	4326	1735
Kretto Syscon	2.04	-0.49	1674255	99452	1583
Keynote Finance	444.35	1.18	19705	1175	1578
Somi Conveyor	202.95	17.99	23372	1424	1542
Royale Manor	50.12	10.47	84830	5357	1483
Transformers	571.4	5	183683	11602	1483
Bisil Plast	1.38	4.55	466152	29993	1454
CDG PETCHEM	50.1	0	28059	1975	1321
Systematix Corp	150.5	4.33	21287	1529	1292

* the Average Volume of last 5 days

Price Shockers - NSE				
Company name	LCP	Prv Close	% Chg	Volume
Emmbi Ind	120.11	88.45	35.79	68834
The Investment	162.55	122	33.24	69156
Rama Phosphates	119.41	90.99	31.23	43632
Variman Global	12.79	10.04	27.39	848530
Pentokey Organy	42.42	33.67	25.99	7486
Pondy Oxides	757.3	608.05	24.55	116311
Himalaya Food	15.22	12.24	24.35	192330
Soma Textile	48	39.02	23.01	19859
Rajasthan Cylin	43.1	35.26	22.23	2715
Cupid	73.89	60.67	21.79	1280523
Jupiter Infomed	55.66	46	21	38780
Garware HiTech	3211.55	2654.2	21	93047
Vardhman Poly	12.34	10.2	20.98	998399
Binani Ind	21.42	17.71	20.95	261934
Kuwer Ind	13.23	10.94	20.93	10214
ContinentContro	11.04	9.14	20.79	3109
Magellanic	71.11	58.88	20.77	355450
Shiv Texchem	275.15	228.1	20.63	36800
Sugal Damani	59	48.98	20.46	562
Silverpoint	10.14	8.42	20.43	177790

* the % price rise of the last 3 days

Nifty 50 stocks - Summary Details											
Symbol	LTP	Chng	% Chng	Volume (lacs)	Turnover (crs.)	52w High	Diff with 52w H	52w Low	Diff with 52w L	365 days % chng	30 days % chng
NIFTY 50	23437.20	108.65	0.47%	3484.25	28102	26277	10.81%	21281	10.13%	4.16%	4.74%
ADANIEN	2414.10	-4.10	-0.17%	8.90	214	3744	35.52%	2025	19.21%	8.76%	-23.25%
ADANIPTS	1235.50	24.70	2.04%	19.10	233	1621	23.80%	996	24.09%	10.16%	-6.28%
APOLLOHSP	7010.00	105.00	1.52%	6.22	434	7545	7.10%	5693	23.13%	14.74%	11.14%
ASIANPAINT	2456.00	40.30	1.67%	11.67	286	3395	27.66%	2125	15.59%	10.25%	-13.52%
AXISBANK	1161.00	48.20	4.33%	128.36	1475	1340	13.34%	934	24.37%	14.96%	9.77%
BAJAJ-AUTO	7947.00	-48.50	-0.61%	2.94	233	12774	37.79%	7089	12.10%	6.09%	-11.51%
BAJAJFINSV	1968.50	0.50	0.03%	10.34	203	2030	3.02%	1419	38.72%	8.95%	18.85%
BAJFINANCE	9065.00	-76.00	-0.83%	7.20	652	9290	2.42%	6376	42.18%	7.55%	27.98%
BEL	294.10	0.40	0.14%	124.79	366	341	13.63%	221	33.08%	4.83%	25.23%
BHARTIARTL	1821.00	22.20	1.23%	61.81	1119	1827	0.30%	1210	50.45%	11.64%	48.84%
CIPLA	1498.00	16.20	1.09%	10.24	153	1702	11.99%	1317	13.72%	2.36%	8.32%
COALINDIA	399.80	4.55	1.15%	49.92	198	544	26.45%	349	14.47%	5.54%	-11.47%
DRREDDY	1150.90	-4.00	-0.35%	14.52	168	1421	19.04%	1020	12.83%	4.55%	-80.73%
EICHERMOT	5600.00	71.00	1.28%	7.34	411	5630	0.53%	4194	33.53%	11.97%	33.09%
ETERNAL	221.85	-0.38	-0.17%	261.56	578	305	27.19%	146	51.64%	#VALUE!	#VALUE!
GRASIM	2715.80	-2.80	-0.10%	4.62	125	2878	5.63%	2172	25.06%	14.03%	20.80%
HCLTECH	1434.00	7.50	0.53%	25.53	364	2012	28.73%	1235	16.11%	-6.71%	-4.87%
HDFCBANK	1875.90	11.00	0.59%	95.68	1793	1884	0.42%	1427	31.48%	10.04%	25.64%
HDFCLIFE	717.00	12.30	1.75%	34.53	247	761	5.81%	511	40.20%	15.05%	16.82%
HEROMOTOCO	3790.00	-13.90	-0.37%	4.91	185	6246	39.32%	3344	13.34%	7.16%	-13.68%
HINDALCO	609.65	-7.95	-1.29%	44.48	271	773	21.10%	546	11.57%	-9.96%	-0.46%
HINDUNILVR	2364.50	3.00	0.13%	11.32	268	3035	22.09%	2136	10.70%	8.82%	7.86%
ICICIBANK	1358.00	7.80	0.58%	140.39	1896	1373	1.09%	1048	29.57%	8.51%	25.78%
INDUSINDBK	785.50	49.60	6.74%	312.53	2412	1558	49.58%	606	29.62%	17.24%	-48.81%
INFY	1412.20	-13.80	-0.97%	120.23	1695	2006	29.62%	1307	8.05%	-10.55%	-3.75%
ITC	424.90	4.50	1.07%	130.35	552	529	19.60%	390	8.91%	3.01%	-0.34%
JIOFIN	242.30	3.73	1.56%	277.21	669	395	38.61%	199	21.97%	8.84%	-31.62%
JSWSTEEL	1010.10	2.10	0.21%	12.81	128	1075	6.03%	824	22.61%	0.82%	17.31%
KOTAKBANK	2121.60	1.40	0.07%	29.00	617	2203	3.67%	1544	37.42%	6.97%	18.09%
LT	3231.40	-26.20	-0.80%	15.78	513	3964	18.47%	2965	8.97%	1.27%	-10.36%
M&M	2632.20	-13.80	-0.52%	30.71	810	3271	19.53%	1998	31.73%	-0.34%	28.30%
MARUTI	11665.00	-190.00	-1.60%	4.70	549	13680	14.73%	10725	8.76%	1.30%	-6.11%
NESTLEIND	2382.00	14.10	0.60%	6.77	161	2778	14.25%	2110	12.89%	8.73%	-6.67%
NTPC	359.35	-3.15	-0.87%	115.41	416	448	19.87%	293	22.73%	8.26%	-0.51%
ONGC	240.84	8.15	3.50%	187.49	445	345	30.19%	205	17.48%	7.00%	-13.80%
POWERGRID	305.50	0.95	0.31%	70.32	215	366	16.59%	247	23.53%	14.24%	11.57%
RELIANCE	1238.00	-2.10	-0.17%	82.48	1019	1609	23.05%	1115	11.05%	-0.69%	-57.70%
SBILIFE	1564.50	1.90	0.12%	7.84	123	1936	19.19%	1308	19.64%	12.98%	6.71%
SBIN	772.15	8.65	1.13%	125.37	964	912	15.33%	680	13.55%	6.03%	1.88%
SHRIRAMFIN	675.00	3.00	0.45%	65.71	441	730	7.59%	439	53.90%	9.12%	-72.00%
SUNPHARMA	1691.00	-14.00	-0.82%	22.05	373	1960	13.74%	1377	22.79%	0.57%	9.94%
TATACONSUM	1106.00	2.60	0.24%	6.79	75	1250	11.53%	883	25.27%	16.89%	-2.19%
TATAMOTORS	616.10	-6.10	-0.98%	123.18	760	1179	47.74%	536	15.00%	-6.02%	-38.32%
TATASTEEL	137.10	0.69	0.51%	426.84	580	185	25.73%	123	11.81%	-9.22%	-14.85%
TCS	3274.00	25.80	0.79%	23.84	778	4592	28.71%	3056	7.13%	-6.76%	-16.93%
TECHM	1308.10	6.40	0.49%	10.93	142	1808	27.64%	1163	12.48%	-9.16%	7.38%
TITAN	3269.70	-3.70	-0.11%	8.90	291	3867	15.45%	2925	11.78%	8.70%	-9.12%
TRENT	5042.00	165.00	3.38%	15.90	793	8345	39.58%	3912	28.87%	0.26%	26.86%
ULTRACEMCO	11741.00	22.00	0.19%	2.68	315	12145	3.33%	9250	26.93%	12.21%	23.37%
WIPRO	247.60	3.60	1.48%	162.03	397	325	23.72%	209	18.75%	-6.19%	-46.09%

Disclaimer / Disclosures

ANALYST CERTIFICATION

I, Mrs. Vaishali Parekh B.com, Research Analyst, author and the name subscribed to this report, hereby certify that all of the views expressed in this research report accurately reflect our views about the subject issuer(s) or securities. We also certify that no part of our compensation was, is, or will be directly or indirectly related to the specific recommendation(s) or view(s) in this report.

Terms & conditions and other disclosures:

Prabhudas Lilladher Pvt. Ltd, Mumbai, India (hereinafter referred to as "PL") is engaged in the business of Stock Broking, Portfolio Manager, Depository Participant and distribution for third party financial products. PL is a subsidiary of Prabhudas Lilladher Advisory Services Pvt Ltd. which has its various subsidiaries engaged in business of commodity broking, investment banking, financial services (margin funding) and distribution of third party financial/other products, details in respect of which are available at www.plindia.com

This document has been prepared by the Research Division of PL and is meant for use by the recipient only as information and is not for circulation. This document is not to be reported or copied or made available to others without prior permission of PL. It should not be considered or taken as an offer to sell or a solicitation to buy or sell any security.

The information contained in this report has been obtained from sources that are considered to be reliable. However, PL has not independently verified the accuracy or completeness of the same. Neither PL nor any of its affiliates, its directors or its employees accepts any responsibility of whatsoever nature for the information, statements and opinion given, made available or expressed herein or for any omission therein.

Recipients of this report should be aware that past performance is not necessarily a guide to future performance and value of investments can go down as well. The suitability or otherwise of any investments will depend upon the recipient's particular circumstances and, in case of doubt, advice should be sought from an independent expert/advisor.

Either PL or its affiliates or its directors or its employees or its representatives or its clients or their relatives may have position(s), make market, act as principal or engage in transactions of securities of companies referred to in this report and they may have used the research material prior to publication.

PL may from time to time solicit or perform investment banking or other services for any company mentioned in this document.

PL is registered as Research Analyst under Securities and Exchange Board of India (Research Analysts) Regulations, 2014 PL submits that no material disciplinary action has been taken on us by any Regulatory Authority impacting Equity Research Analysis activities.

PL or its research analysts or its associates or his relatives do not have any financial interest in the subject company.

PL or its research analysts or its associates or his relatives do not have actual/beneficial ownership of one per cent or more securities of the subject company at the end of the month immediately preceding the date of publication of the research report.

PL or its research analysts or its associates or his relatives do not have any material conflict of interest at the time of publication of the research report.

PL or its associates might have received compensation from the subject company in the past twelve months.

PL or its associates might have managed or co-managed public offering of securities for the subject company in the past twelve months or mandated by the subject company for any other assignment in the past twelve months.

PL or its associates might have received any compensation for investment banking or merchant banking or brokerage services from the subject company in the past twelve months.

PL or its associates might have received any compensation for products or services other than investment banking or merchant banking or brokerage services from the subject company in the past twelve months PL or its associates might have received any compensation or other benefits from the subject company or third party in connection with the research report.

PL encourages independence in research report preparation and strives to minimize conflict in preparation of research report. PL or its analysts did not receive any compensation or other benefits from the subject Company or third party in connection with the preparation of the research report. PL or its Research Analysts do not have any material conflict of interest at the time of publication of this report.

It is confirmed that Mrs.Vaishali Parekh B.com, Research Analyst of this report has not received any compensation from the companies mentioned in the report in the preceding twelve months compensation of our Research Analysts is not based on any specific merchant banking, investment banking or brokerage service transactions.

The Research analysts for this report certifies that all of the views expressed in this report accurately reflect his or her personal views about the subject company or companies and its or their securities, and no part of his or her compensation was, is or will be, directly or indirectly related to specific recommendations or views expressed in this report.

The research analysts for this report has not served as an officer, director or employee of the subject company PL or its research analysts have not engaged in market making activity for the subject company

Our sales people, traders, and other professionals or affiliates may provide oral or written market commentary or trading strategies to our clients that reflect opinions that are contrary to the opinions expressed herein, and our proprietary trading and investing businesses may make investment decisions that are inconsistent with the recommendations expressed herein. In reviewing these materials, you should be aware that any or all of the foregoing, among other things, may give rise to real or potential conflicts of interest.

PL and its associates, their directors and employees may (a) from time to time, have a long or short position in, and buy or sell the securities of the subject company or (b) be engaged in any other transaction involving such securities and earn brokerage or other compensation or act as a market maker in the financial instruments of the subject company or act as an advisor or lender/borrower to the subject company or may have any other potential conflict of interests with respect to any recommendation and other related information and opinions.