

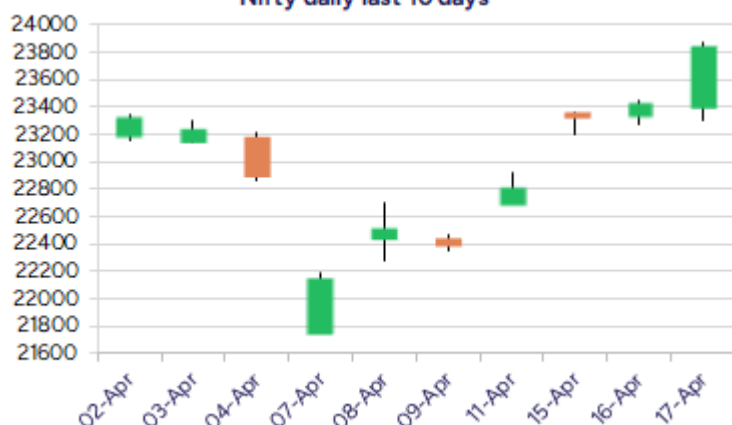
Date: 21st April 2025

* Sensex 78553.20 + 1508.91

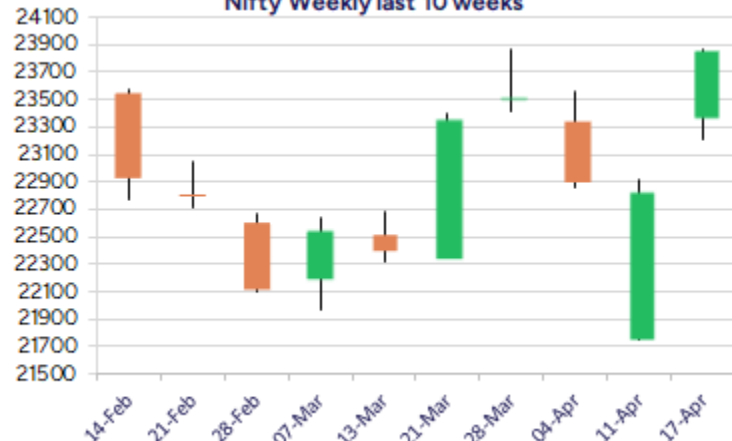
* Nifty 23851.65 + 414.45

* Bank Nifty 54290.20 + 1172.45

Nifty daily last 10 days



Nifty Weekly last 10 weeks



*Blue candle → Close rate > Open rate * Red candle → Close rate < Open rate

Market Preview

Nifty sizzles; retests previous peak of 23870 zone

Nifty witnessed a stupendous session gaining more than 400 points on the back of strong buying activity witnessed across the board especially among the banking and financial stocks. BankNifty gained more than 1100 points closing above the 54000 zone and with bias maintained strong, has further scope for upward move in the coming days. The market breadth was strong with the advance decline indicating a ratio of 2:1 at close.

Market Forecast

Nifty daily range 23700-24200

Nifty, witnessed another session of robust move having tremendous buying interest triggered among the frontline stocks which pulled the index to retest the previous peak level of 23870 zone with the overall trend getting stronger anticipating for further rise. The index would have the next upside targets of 24200 and 24800 levels with near-term support positioned near the 100 period MA at 23400 zone which needs to be sustained as of now.

BankNifty, witnessed one of the best sessions in recent times almost retesting the previous peak zone of 54470 level with most of the frontline banking stocks like HDFC Bank, ICICI Bank, Kotak Bank, Axis Bank and SBI gaining strength, leading from the front to pull the index to new high. The index has now opened the gates for upside target of 56200 and 57500 levels in the coming days with 52500 level maintained as the important and crucial support zone as of now which needs to be sustained.

The support for the day is seen at 23700 levels while the resistance is seen at 24200 levels. BankNifty would have the daily range of 53700-55000 levels.

Indices	Period	Closing	% Chng	Trend	Reversal	2 Sup	1 Sup	Pivot	1 Res	2 Res
Nifty	Daily	23851.65	1.77%	4	22933.40	23102	23477	23674	24048	24245
	Weekly	23851.65	4.48%	5	22874.25	23102	23477	23674	24048	24245
	Monthly	23519.35	0.05%	-6	25020.35	21213	22366	23118	24271	25022
Bank Nifty	Daily	54290.20	2.21%	3	52503.60	52665	53477	53938	54751	55212
	Weekly	54290.20	6.45%	5	51255.25	50990	52640	53519	55170	56049
	Monthly	51564.85	3.99%	-6	52195.95	46118	48841	50451	53175	54785
Sensex	Daily	78553.20	1.96%	4	75499.40	76010	77281	77938	79210	79866
	Weekly	78553.20	4.52%	5	75251.85	75708	77131	77872	79295	80036
	Monthly	77414.92	-0.11%	-6	82130.50	70156	73785	76263	79893	82371

Daily Trend turned Up

Scrip Name	LCP	Curr Trnd	Reversal
APLLTD	849.9	-10	849.15
FORTIS	664.55	-1	653.1
MANAPPURAM	229.21	-12	227.95
SHREECEM	31000	-1	30896.95
SUNPHARMA	1751.5	-1	1682.05
TORNTPHARM	3254.8	-6	3217.8
VOLTAS	1284.9	-10	1280.75

Daily Trend turned Down

Scrip Name	LCP	Curr Trnd	Reversal
ICICIGI	1793.4	2	1795.15
KSCL	1506	3	1506.8
SUNTV	667.65	3	668.2
TATACOMM	1565	2	1578.4

* Trends turned Up after a significant period

* Trends turned Down after a significant period

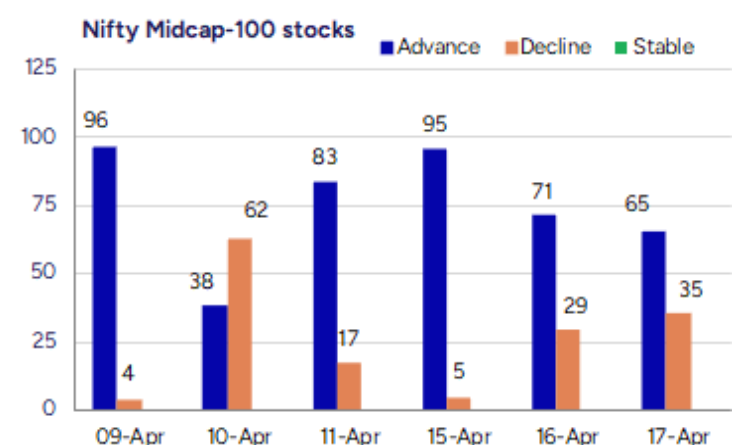
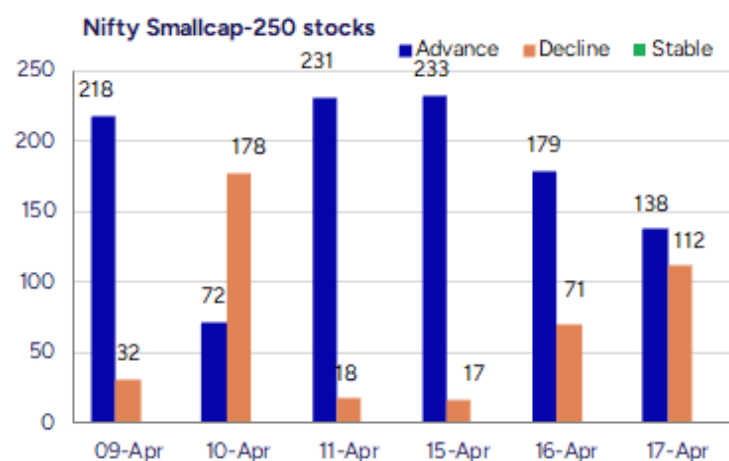
Gainers - Losers (Nifty 500 Stocks)

Gainers

Company Name	Last Price	% Gain	Volume
Fert and Chem	760.85	13.82	17251121
Emcure Pharmace	1098.8	8.98	529139
Ujjivan Small	42.1	7.12	46756422
Delhivery	281.05	6.84	17063440
Equitas Bank	65.11	6.81	8912129
Cello World	590.95	5.14	1168984
KFin Tech	1105.8	5.07	7209839

Losers

Company Name	Last Price	% Loss	Volume
Sonata	314.7	-6.07	12278692
Wipro	236.9	-4.34	54875421
RamkrishnaForge	736.5	-4.1	800822
Usha Martin	311.15	-2.95	1045212
TBO Tek	1046.2	-2.62	249254
Akums Drugs P	486.35	-2.56	291094
V-Guard Ind	352.4	-2.5	631149



Nifty Daily chart with RSI indicator



BankNifty Daily chart with RSI indicator



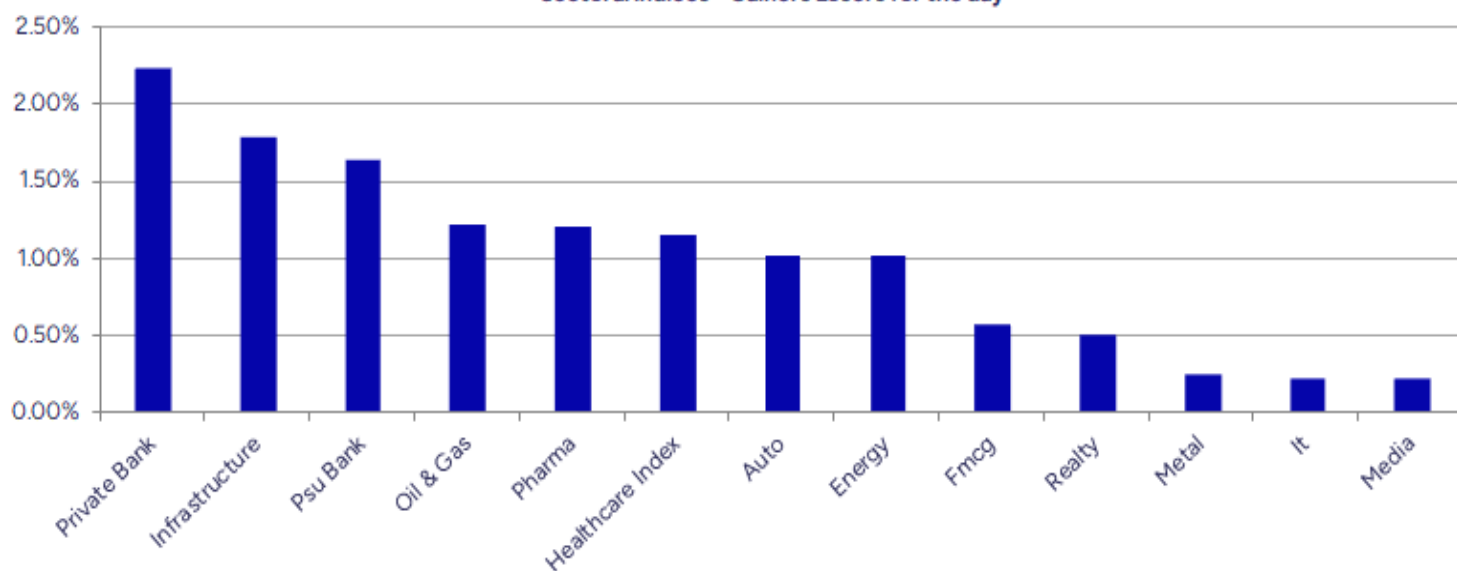
Breakouts - Cross above 200 DMA			
Company Name	LCP	Change %	200 DMA
Gulshan Poly	202.59	3.92	194.94
LE Travenues Te	157.74	3.61	152.24
Reliance Infra	262.3	3.53	253.36
Avenue Supermar	4357.1	3.02	4229.4
Jindal Photo	800.9	2.63	780.35
Venus Remedies	338.6	2.57	330.12
Goyal Salt	195.15	2.45	190.48
Borosil Renew	521.05	2.41	508.79
Adani Trans	914.15	2.10	895.33
Jindal Poly Inv	817.9	2.05	801.44
Lagham Spintex	123.16	1.85	120.92
Jupiter Life	1469.4	1.62	1445.99
MRF	126475	1.45	124667.44
SBI Life Insura	1608.2	1.37	1586.45
HDFC AMC	4218	1.31	4163.55
Jana SFB	501.75	1.23	495.63
Datamatics Glob	621.45	1.18	614.22
Guj Amb Exports	126.5	98.00%	125.27

* Stocks crossing above its Simple Moving Average (200DMA)

Breakdown - Cross below 200 DMA			
Company Name	LCP	Change %	200 DMA
Crop Life Sci.	47.15	-5.02	49.64
Raj Oil Mills	50.49	-2.47	51.77
Medicamen Bio	473.8	-1.70	481.98
ASK Auto	424.3	-1.58	431.11
Cantabil Retail	257.85	-0.67	259.59
SPML Infra	210.07	-0.59	211.32
Magadh Sugar	701.5	-0.59	705.64
Krsnaa	800.9	-0.56	805.44
Vishnu Chemical	426.15	-0.52	428.37
Akzo Nobel	3494.5	-0.39	3508.11
Aegis Logistics	787	-0.19	788.47
Godrej Agrovat	762	-0.07	762.52
Torrent Power	1591	-0.04	1591.71

* Stocks crossing below its Simple Moving Average (200DMA)

Sectoral Indices - Gainers Losers for the day



Stocks witnessing a volume surge as compared to their 5 day average volume

Watch out for the stocks that have seen a huge spurt in its share price over the last three days

Volume Shockers - NSE					
Company name	LCP	% Chg	Volume	Avg Vol *	% Chg
Supreme Ind	3390.65	-0.28	282790	1945	14441
Supreme Petro	601.2	1.25	203841	4419	4513
Emkay Global	192.2	-0.1	44269	1061	4074
BGR Energy	84.35	4.63	248827	5989	4055
Panchmahal Stee	146.85	-11.48	89428	2165	4030
HCP Plastene	123.4	-1.67	63125	1582	3890
Martin Burn Ltd	79.74	4.99	112781	3619	3017
Azad India Mobi	96.78	-0.08	34112	1165	2827
Sujala Trading	74.43	4.82	74608	2840	2527
Jhaveri Credits	192.55	9.06	40917	1558	2526
Somi Conveyor	184.65	19.24	34530	1424	2325
Data Patterns	1631.6	14.82	462664	20624	2143
Cambridge Tech	53.77	-4.98	147595	6640	2123
Puravankara	255.2	2.35	101365	4979	1936
HEG	393.95	2.4	79177	4095	1833
FEDDERS HOLDING	52.22	2.03	139950	7945	1661
Barbeque Nat	309.2	4.04	81356	4963	1539
Mazda	241.8	3.84	16250	1012	1505
Panorama Studio	208.5	4.04	272887	17102	1496
Gensol Engineer	321.2	-4.22	838053	53436	1468

* the Average Volume of last 5 days

Price Shockers - NSE				
Company name	LCP	Prv Close	% Chg	Volume
Pentokey Organy	50.9	33.67	51.17	9149
SMS Lifescience	1479	1097	34.82	1890
Soma Textile	51.65	39.02	32.37	66111
Mercury Ev-Tech	73.27	56.99	28.57	1099902
Oswal Greentech	43.86	34.25	28.06	517959
Garg Furnace	220.6	173	27.51	26451
Jupiter Infomed	58.44	46	27.04	54728
The Investment	154	122	26.23	10792
Shiv Texchem	287.6	228.1	26.09	20000
Pondy Oxides	762	608.05	25.32	50944
Waaree Renewabl	1107.35	883.7	25.31	983073
Essar Shipping	30.37	24.24	25.29	58587
Archidply Decor	113.65	90.8	25.17	30768
Sonal Adhesives	55.14	44.12	24.98	8583
Cupid	74.79	60.67	23.27	644333
Sofcom Systems	91.64	74.35	23.25	254545
Royale Manor	55.78	45.37	22.94	387224
Jaykay Ent	159.7	129.9	22.94	321785
Step Two Corp	42.74	34.99	22.15	6462
Fert and Chem	760.2	624.6	21.71	633054

* the % price rise of the last 3 days

Nifty 50 stocks - Summary Details											
Symbol	LTP	Chng	% Chng	Volume (lacs)	Turnover (crs.)	52w High	Diff with 52w H	52w Low	Diff with 52w L	365 days % chng	30 days % chng
NIFTY 50	23851.65	414.45	1.77%	5053.34	38450	26277	9.23%	21281	12.08%	5.97%	7.69%
ADANIEN	2414.80	-0.80	-0.03%	10.55	256	3744	35.50%	2025	19.25%	7.34%	-22.16%
ADANIPTS	1261.00	28.10	2.28%	42.81	536	1621	22.23%	996	26.65%	10.75%	-3.45%
APOLLOHOSP	7075.00	69.50	0.99%	5.33	376	7545	6.23%	5693	24.27%	14.89%	11.66%
ASIANPAINT	2465.00	5.10	0.21%	8.86	218	3395	27.39%	2125	16.01%	11.19%	-12.80%
AXISBANK	1190.10	28.80	2.48%	134.46	1590	1340	11.16%	934	27.49%	15.15%	13.20%
BAJAJ-AUTO	8008.00	46.50	0.58%	2.74	219	12774	37.31%	7089	12.96%	7.11%	-10.10%
BAJAJFINSV	2031.00	61.80	3.14%	21.05	422	2040	0.43%	1419	43.12%	8.75%	25.75%
BAJFINANCE	9170.00	113.50	1.25%	11.42	1036	9290	1.29%	6376	43.83%	6.78%	31.75%
BEL	294.55	0.95	0.32%	136.10	401	341	13.49%	221	33.28%	5.44%	26.43%
BHARTIARTL	1882.90	60.30	3.31%	108.94	2034	1898	0.78%	1212	55.35%	15.25%	55.30%
CIPLA	1514.10	17.70	1.18%	12.12	183	1702	11.04%	1317	14.94%	1.51%	10.18%
COALINDIA	399.00	-0.25	-0.06%	83.64	330	544	26.59%	349	14.24%	3.40%	-11.99%
DRREDDY	1163.30	4.90	0.42%	27.88	325	1421	18.16%	1020	14.05%	1.12%	-80.77%
EICHERMOT	5663.00	47.50	0.85%	5.64	320	5716	0.92%	4206	34.63%	12.44%	30.37%
ETERNAL	232.00	9.92	4.47%	701.26	1614	305	23.86%	146	58.58%	#VALUE!	#VALUE!
GRASIM	2761.90	59.10	2.19%	10.61	292	2878	4.03%	2172	27.18%	15.06%	23.08%
HCLTECH	1439.00	7.30	0.51%	35.50	500	2012	28.49%	1235	16.52%	-6.93%	-2.66%
HDFCBANK	1905.80	27.80	1.48%	178.52	3394	1920	0.72%	1427	33.57%	11.48%	26.33%
HDFCLIFE	719.00	2.95	0.41%	31.06	223	761	5.54%	511	40.59%	14.33%	19.10%
HEROMOTOCO	3772.00	-9.90	-0.26%	9.71	362	6246	39.61%	3344	12.80%	7.98%	-12.75%
HINDALCO	608.00	-1.90	-0.31%	45.18	275	773	21.31%	546	11.26%	-10.47%	0.11%
HINDUNILVR	2372.50	5.90	0.25%	19.62	464	3035	21.83%	2136	11.07%	9.38%	6.94%
ICICIBANK	1407.00	50.60	3.73%	174.90	2435	1409	0.13%	1048	34.24%	10.85%	31.83%
INDUSINDBK	792.70	4.45	0.56%	139.87	1108	1550	48.86%	606	30.81%	17.32%	-46.70%
INFY	1427.70	14.60	1.03%	142.64	1997	2006	28.84%	1307	9.23%	-10.73%	0.36%
ITC	427.00	2.55	0.60%	224.10	953	529	19.21%	390	9.45%	4.73%	0.32%
JIOFIN	246.20	3.92	1.62%	304.22	741	395	37.62%	199	23.94%	12.28%	-31.89%
JSWSTEEL	1008.00	-1.40	-0.14%	20.74	207	1075	6.22%	824	22.36%	0.15%	19.16%
KOTAKBANK	2185.10	61.70	2.91%	53.89	1162	2203	0.79%	1544	41.54%	9.78%	22.06%
LT	3244.90	17.20	0.53%	32.09	1029	3964	18.13%	2965	9.43%	2.33%	-8.36%
M&M	2675.30	40.70	1.54%	26.39	700	3271	18.21%	1998	33.89%	-0.95%	31.91%
MARUTI	11665.00	1.00	0.01%	3.02	352	13680	14.73%	10725	8.76%	1.22%	-6.46%
NESTLEIND	2415.60	32.30	1.36%	9.08	218	2778	13.05%	2110	14.48%	11.14%	-5.09%
NTPC	363.75	4.45	1.24%	122.88	445	448	18.89%	293	24.23%	9.75%	1.32%
ONGC	243.78	2.56	1.06%	128.92	313	345	29.34%	205	18.92%	5.99%	-14.01%
POWERGRID	308.45	2.70	0.88%	85.29	262	366	15.78%	247	24.73%	15.58%	12.67%
RELIANCE	1273.00	33.70	2.72%	153.98	1941	1609	20.87%	1115	14.19%	2.88%	-56.52%
SBILIFE	1607.50	42.10	2.69%	15.00	238	1936	16.97%	1308	22.93%	12.13%	9.94%
SBIN	793.85	22.10	2.86%	270.35	2129	912	12.96%	680	16.74%	10.27%	6.09%
SHRIRAMFIN	690.00	13.95	2.06%	57.71	395	730	5.54%	439	57.32%	10.99%	-71.19%
SUNPHARMA	1757.00	63.90	3.77%	26.84	465	1960	10.37%	1377	27.58%	2.77%	13.91%
TATACONSUM	1119.00	13.10	1.18%	15.42	172	1250	10.49%	883	26.74%	19.11%	-1.36%
TATAMOTORS	621.00	4.95	0.80%	143.43	888	1179	47.33%	536	15.91%	-5.98%	-37.39%
TATASTEEL	137.24	0.27	0.20%	622.83	847	185	25.66%	123	11.92%	-9.66%	-14.31%
TCS	3297.40	23.60	0.72%	29.32	957	4592	28.20%	3056	7.90%	-5.68%	-14.82%
TECHM	1304.80	-3.90	-0.30%	30.28	392	1808	27.82%	1163	12.20%	-9.26%	9.28%
TITAN	3322.00	49.90	1.53%	10.84	356	3867	14.09%	2925	13.57%	10.28%	-8.73%
TRENT	5117.50	82.00	1.63%	14.64	743	8345	38.68%	3912	30.80%	-0.56%	28.64%
ULTRACEMCO	11900.00	172.00	1.47%	2.90	343	12145	2.02%	9250	28.65%	12.84%	25.75%
WIPRO	237.40	-10.25	-4.14%	548.75	1290	325	26.86%	209	13.86%	-8.83%	-47.16%

Disclaimer / Disclosures

ANALYST CERTIFICATION

I, Mrs. Vaishali Parekh B.com, Research Analyst, author and the name subscribed to this report, hereby certify that all of the views expressed in this research report accurately reflect our views about the subject issuer(s) or securities. We also certify that no part of our compensation was, is, or will be directly or indirectly related to the specific recommendation(s) or view(s) in this report.

Terms & conditions and other disclosures:

Prabhudas Lilladher Pvt. Ltd, Mumbai, India (hereinafter referred to as "PL") is engaged in the business of Stock Broking, Portfolio Manager, Depository Participant and distribution for third party financial products. PL is a subsidiary of Prabhudas Lilladher Advisory Services Pvt Ltd. which has its various subsidiaries engaged in business of commodity broking, investment banking, financial services (margin funding) and distribution of third party financial/other products, details in respect of which are available at www.plindia.com

This document has been prepared by the Research Division of PL and is meant for use by the recipient only as information and is not for circulation. This document is not to be reported or copied or made available to others without prior permission of PL. It should not be considered or taken as an offer to sell or a solicitation to buy or sell any security.

The information contained in this report has been obtained from sources that are considered to be reliable. However, PL has not independently verified the accuracy or completeness of the same. Neither PL nor any of its affiliates, its directors or its employees accepts any responsibility of whatsoever nature for the information, statements and opinion given, made available or expressed herein or for any omission therein.

Recipients of this report should be aware that past performance is not necessarily a guide to future performance and value of investments can go down as well. The suitability or otherwise of any investments will depend upon the recipient's particular circumstances and, in case of doubt, advice should be sought from an independent expert/advisor.

Either PL or its affiliates or its directors or its employees or its representatives or its clients or their relatives may have position(s), make market, act as principal or engage in transactions of securities of companies referred to in this report and they may have used the research material prior to publication.

PL may from time to time solicit or perform investment banking or other services for any company mentioned in this document.

PL is registered as Research Analyst under Securities and Exchange Board of India (Research Analysts) Regulations, 2014 PL submits that no material disciplinary action has been taken on us by any Regulatory Authority impacting Equity Research Analysis activities.

PL or its research analysts or its associates or his relatives do not have any financial interest in the subject company.

PL or its research analysts or its associates or his relatives do not have actual/beneficial ownership of one per cent or more securities of the subject company at the end of the month immediately preceding the date of publication of the research report.

PL or its research analysts or its associates or his relatives do not have any material conflict of interest at the time of publication of the research report.

PL or its associates might have received compensation from the subject company in the past twelve months.

PL or its associates might have managed or co-managed public offering of securities for the subject company in the past twelve months or mandated by the subject company for any other assignment in the past twelve months.

PL or its associates might have received any compensation for investment banking or merchant banking or brokerage services from the subject company in the past twelve months.

PL or its associates might have received any compensation for products or services other than investment banking or merchant banking or brokerage services from the subject company in the past twelve months PL or its associates might have received any compensation or other benefits from the subject company or third party in connection with the research report.

PL encourages independence in research report preparation and strives to minimize conflict in preparation of research report. PL or its analysts did not receive any compensation or other benefits from the subject Company or third party in connection with the preparation of the research report. PL or its Research Analysts do not have any material conflict of interest at the time of publication of this report.

It is confirmed that Mrs.Vaishali Parekh B.com, Research Analyst of this report has not received any compensation from the companies mentioned in the report in the preceding twelve months compensation of our Research Analysts is not based on any specific merchant banking, investment banking or brokerage service transactions.

The Research analysts for this report certifies that all of the views expressed in this report accurately reflect his or her personal views about the subject company or companies and its or their securities, and no part of his or her compensation was, is or will be, directly or indirectly related to specific recommendations or views expressed in this report.

The research analysts for this report has not served as an officer, director or employee of the subject company PL or its research analysts have not engaged in market making activity for the subject company

Our sales people, traders, and other professionals or affiliates may provide oral or written market commentary or trading strategies to our clients that reflect opinions that are contrary to the opinions expressed herein, and our proprietary trading and investing businesses may make investment decisions that are inconsistent with the recommendations expressed herein. In reviewing these materials, you should be aware that any or all of the foregoing, among other things, may give rise to real or potential conflicts of interest.

PL and its associates, their directors and employees may (a) from time to time, have a long or short position in, and buy or sell the securities of the subject company or (b) be engaged in any other transaction involving such securities and earn brokerage or other compensation or act as a market maker in the financial instruments of the subject company or act as an advisor or lender/borrower to the subject company or may have any other potential conflict of interests with respect to any recommendation and other related information and opinions.