

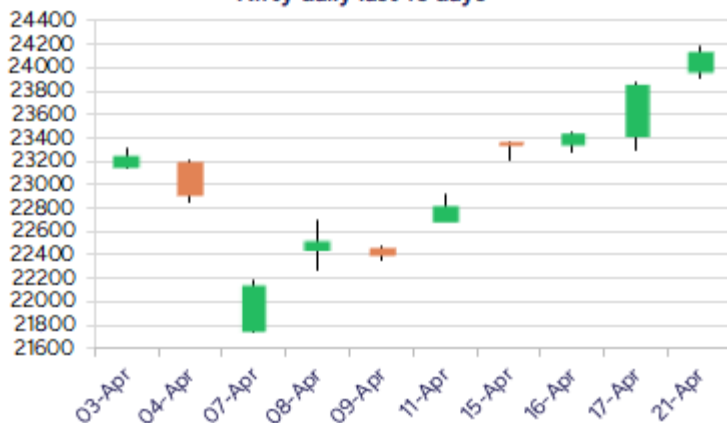
Date: 22nd April 2025

* Sensex 79408.50 + 855.30

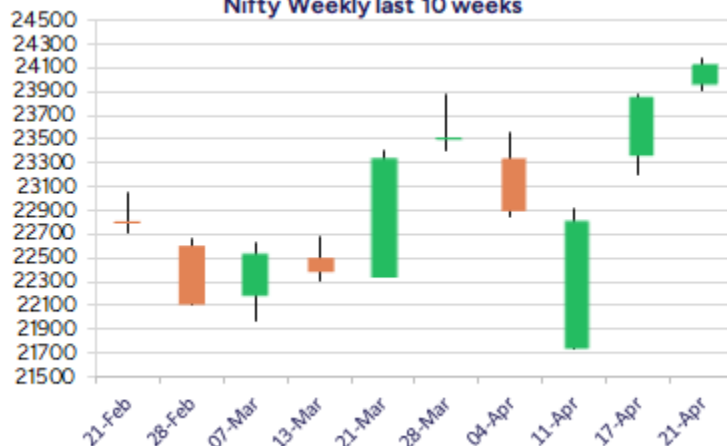
* Nifty 24125.55 + 273.90

* Bank Nifty 55304.50 + 1014.30

Nifty daily last 10 days



Nifty Weekly last 10 weeks



*Blue candle → Close rate > Open rate * Red candle → Close rate < Open rate

Market Preview

Nifty ends above 24000 zone (200 period SMA)

Nifty witnessed another day of strong gain moving past the 24000 zone decisively further strengthening the trend. BankNifty has rocketed in the last one week to end on a strong note recording all time high level closing above the 55000 zone. The market breadth was strong once again with the advance decline indicating a ratio of almost 5:1 at close.

Market Forecast

Nifty daily range 24000-24400

Nifty, extended the gains further with a strong session witnessed once again to close above the important 200 period MA of 24050 level to strengthen the trend and has further scope of upward movement in the coming days. The index has indicated a robust move in the last 2 weeks and has now further upside targets of 24800 and 25300 levels with the near-term important support positioned near the 100 period MA at 23400 zone which needs to be sustained as of now.

BankNifty, witnessed another session of strong upward move to record all time high level scaling above 55000 zone and is a strong territory with overall trend maintained positive. As mentioned earlier, the index would have the next upside targets of 56200 and 57500 levels with 53800 level maintained as the important and crucial support zone as of now which needs to be sustained.

The support for the day is seen at 24000 levels while the resistance is seen at 24400 levels. BankNifty would have the daily range of 54700-56000 levels.

Indices	Period	Closing	% Chng	Trend	Reversal	2 Sup	1 Sup	Pivot	1 Res	2 Res
Nifty	Daily	24125.55	1.15%	5	23375.20	23787	23956	24073	24242	24359
	Weekly	23851.65	4.48%	5	22874.25	23102	23477	23674	24048	24245
	Monthly	23519.35	0.05%	-6	25020.35	21213	22366	23118	24271	25022
Bank Nifty	Daily	55304.50	1.87%	4	53651.75	54360	54832	55147	55619	55934
	Weekly	54290.20	6.45%	5	51255.25	50990	52640	53519	55170	56049
	Monthly	51564.85	3.99%	-6	52195.95	46118	48841	50451	53175	54785
Sensex	Daily	79408.50	1.09%	5	76920.45	78414	78911	79273	79770	80132
	Weekly	78553.20	4.52%	5	75251.85	75708	77131	77872	79295	80036
	Monthly	77414.92	-0.11%	-6	82130.50	70156	73785	76263	79893	82371

Daily Trend turned Up

Scrip Name	LCP	Curr Trnd	Reversal
ICICIGI	1841.1	-1	1783.25
IGL	182.57	-8	176.1
KSCL	1554.5	-1	1495
LUPINLTD	2009.2	-2	1942.4
MGL	1293.7	-2	1263.3
MUTHOOTFIN	2203.6	-8	2098.3
SIEMENS	2827	-9	2565.25
TATACOMM	1573.8	-1	1573.05

* Trends turned Up after a significant period

Daily Trend turned Down

Scrip Name	LCP	Curr Trnd	Reversal
ASIANPAINT	2445	6	2446
BATAIN	1203.2	6	1221.35
BRITANNIA	5393.2	18	5409.3
GODREJCP	1213.4	2	1241.4
HINDUNILVR	2351	7	2357.3
MARICO	695.15	6	712

* Trends turned Down after a significant period

Gainers - Losers (Nifty 500 Stocks)

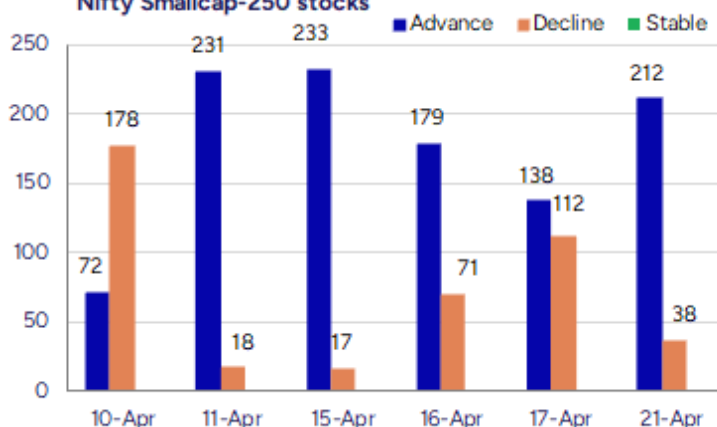
Gainers

Company Name	Last Price	% Gain	Volume
Spandana Sphoor	325.8	20	2720309
Xelpmoc Design	107.12	20	137020
Liberty Shoes	407.8	19.99	455190
Texmo Pipes	68.43	19.99	1825612
Brace Port Logi	105.45	19.97	33600
Hind Motors	28.29	19.97	18420136
CSL Fin	342.95	19.64	473236

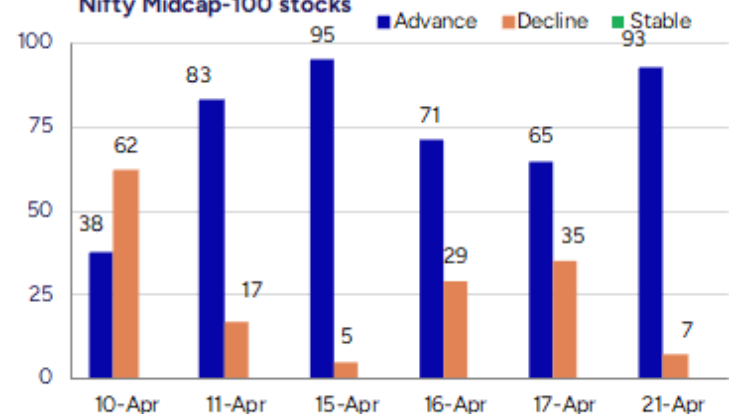
Losers

Company Name	Last Price	% Loss	Volume
Shaily Engg	1653.4	-9.69	239080
Cellecor	48.85	-8.86	3312000
United Heat	61.75	-7.63	108000
Soma Textile	47.78	-7.3	108951
Paramatrix Tech	100.05	-6.36	15600
Agarwal Toughen	109.05	-5.75	112800
SBC Exports	13.9	-5.63	6737087

Nifty Smallcap-250 stocks



Nifty Midcap-100 stocks



Nifty Daily chart with RSI indicator



BankNifty Daily chart with RSI indicator



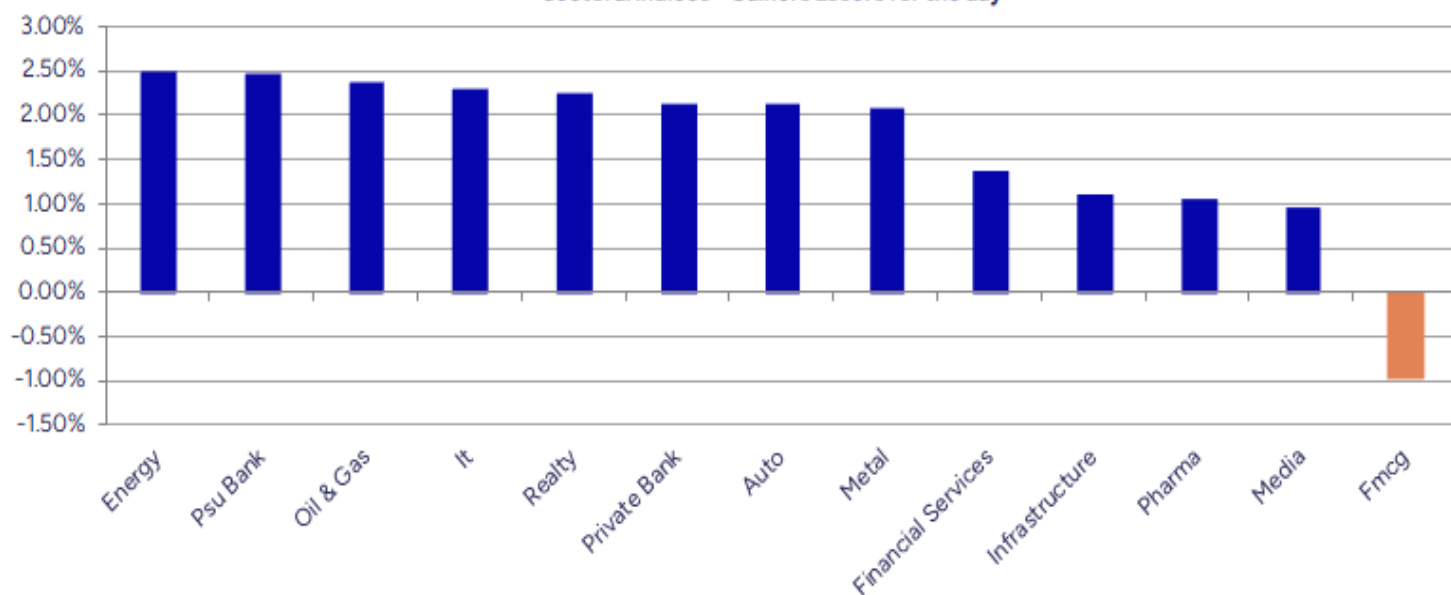
Breakouts - Cross above 200 DMA			
Company Name	LCP	Change %	200 DMA
Arman Financial	1649.7	9.18	1511.04
Gillanders Arbu	107.73	5.97	101.66
Valiant Organic	368.45	4.77	351.67
Unihealth Hospi	149.4	4.63	142.79
Shri Rama Multi	36.45	4.59	34.85
Hind Motors	28.29	4.39	27.1
Sakar Healthcar	309.14	4.19	296.72
Texmo Pipes	68.43	3.65	66.02
Indo Tech Trans	2407.3	3.14	2333.94
Macrotech	1293.4	2.92	1256.71
Capital SFB	305.9	2.85	297.43
Ducol Organics	129.65	2.75	126.18
RBL Bank	192.03	2.61	187.14
Arvind	380.35	2.50	371.09
MOS Utility	267.25	2.33	261.16
Astra Microwave	806.3	2.27	788.41
AU Small Financ	623.6	1.95	611.68
Pondy Oxides	802.35	188.00%	787.53

* Stocks crossing above its Simple Moving Average (200DMA)

Breakdown - Cross below 200 DMA			
Company Name	LCP	Change %	200 DMA
Cellecor	48.85	-7.45	52.78
IBL Finance	56.25	-3.22	58.12
Caplin Labs	1906.7	-2.89	1963.43
GeeCee Ventures	393.1	-1.88	400.62
ILandFS Engg	37.56	-0.84	37.88
Parag Milk Food	185.22	-0.40	185.96
SKP Bearing	227	-0.35	227.8
Pidilite Ind	3019.3	-0.15	3023.75

* Stocks crossing below its Simple Moving Average (200DMA)

Sectoral Indices - Gainers Losers for the day



Stocks witnessing a volume surge as compared to their 5 day average volume

Watch out for the stocks that have seen a huge spurt in its share price over the last three days

Volume Shockers - NSE					
Company name	LCP	% Chg	Volume	Avg Vol *	% Chg
Sky Gold	333.45	-5	1344161	25989	5072
Jash Engineerin	682.95	9.06	1266718	26774	4631
Hind Motors	28.29	19.97	18420136	416435	4323
Just Dial	1028.25	11.54	12376810	280079	4319
Atal	15.93	1.53	3479272	100889	3349
SecMark Consult	123.7	-0.47	89297	2849	3035
Pansari Develop	172.12	4.64	65989	2185	2920
Laxmi Goldorna	498.85	-3.17	30994	1094	2734
Bombay Super	156.13	18.33	722021	26971	2577
GNA Axles	374.15	14.19	2232036	98918	2156
Spandana Sphoor	325.8	20	2720309	145941	1764
Diamond Power	99.44	4.21	117533	6800	1628
Transformers	546.9	3.19	2025564	131705	1438
Liberty Shoes	407.8	19.99	455190	30282	1403
Techno Electric	1155.7	9.26	1221405	88472	1281
Atul	5974	5.16	409996	30242	1256
Sterling Wilson	309	6.06	7363474	581779	1166
ICE Make Refrig	1026.25	1.33	241588	19855	1117
GE Power India	260.95	0.13	774358	64435	1102
Vilin Bio Med	28.15	4.84	112000	9600	1067

* the Average Volume of last 5 days

Price Shockers - NSE				
Company name	LCP	Prv Close	% Chg	Volume
SMS Lifescience	1659.7	1133.7	46.4	34545
Essar Shipping	33.48	25.17	33.02	790230
Shree Vasu	561.55	428.4	31.08	25023
Texmo Pipes	68.43	52.64	30	1825612
Bombay Super	156.13	120.46	29.61	722021
CSL Fin	342.95	265.3	29.27	473236
Archidply Decor	109.29	87.11	25.46	32469
Oswal ChemandFe	45.02	36.34	23.89	3731033
Libas Consumer	14.66	11.96	22.58	254729
Liberty Shoes	407.8	335.25	21.64	455190
Ashima	26.66	22.19	20.14	1076555
Madhav Copper	55.88	46.59	19.94	147863
Pulz Electronic	53.95	45.05	19.76	20000
Indo-National	531.1	444.3	19.54	77363
GNA Axles	374.15	314.3	19.04	2232036
Soma Textile	47.78	40.2	18.86	108951
Purple United	219.2	184.45	18.84	186000
Hind Motors	28.29	23.99	17.92	18420136
Zuari Ind.	304.43	259.73	17.21	754459
Manaksia Alumin	26.36	22.52	17.05	54739

* the % price rise of the last 3 days

Nifty 50 stocks - Summary Details											
Symbol	LTP	Chng	% Chng	Volume (lacs)	Turnover (crs.)	52w High	Diff with 52w H	52w Low	Diff with 52w L	365 days % chng	30 days % chng
NIFTY 50	24125.55	273.90	1.15%	4061.16	33123.60	26277.35	8.19%	21281.45	13.36%	2.15%	7.70%
ADANIENT	2440.00	21.90	0.91%	7.83	190.68	3743.90	34.83%	2025.00	20.49%	2.34%	-20.11%
ADANIPTS	1243.40	-16.00	-1.27%	60.49	744.97	1621.40	23.31%	995.65	24.88%	5.94%	-3.86%
APOLLOHOSP	7137.00	63.50	0.90%	2.45	174.72	7545.35	5.41%	5693.20	25.36%	6.99%	14.65%
ASIANPAINT	2444.80	-23.10	-0.94%	5.42	133.08	3394.90	27.99%	2124.75	15.06%	7.28%	-12.13%
AXISBANK	1220.90	30.10	2.53%	151.66	1859.54	1339.65	8.86%	933.50	30.79%	11.27%	15.71%
BAJAJ-AUTO	8230.00	212.00	2.64%	2.85	232.91	12774.00	35.57%	7089.35	16.09%	-0.62%	-8.93%
BAJAJFINSV	2106.00	70.70	3.47%	26.42	552.28	2118.70	0.60%	1419.05	48.41%	10.18%	25.71%
BAJFINANCE	9274.00	111.50	1.22%	7.82	723.36	9315.00	0.44%	6375.70	45.46%	2.76%	28.70%
BEL	300.20	5.05	1.71%	140.63	421.34	340.50	11.84%	221.00	35.84%	-0.20%	26.51%
BHARTIARTL	1884.00	-5.10	-0.27%	35.01	658.57	1904.30	1.07%	1215.80	54.96%	9.46%	46.56%
CIPLA	1513.50	-1.70	-0.11%	5.70	86.39	1702.05	11.08%	1317.25	14.90%	-0.57%	12.59%
COALINDIA	400.70	1.85	0.46%	89.87	361.38	543.55	26.28%	349.25	14.73%	-1.62%	-8.37%
DRREDDY	1176.80	13.20	1.13%	19.39	226.80	1421.49	17.21%	1020.00	15.37%	-3.05%	-80.42%
EICHERMOT	5808.00	129.50	2.28%	5.52	319.03	5857.50	0.85%	4253.85	36.54%	7.02%	30.72%
GRASIM	2756.00	-4.70	-0.17%	3.23	89.39	2877.75	4.23%	2171.60	26.91%	11.80%	21.45%
HCLTECH	1478.00	40.00	2.78%	28.40	418.61	2012.20	26.55%	1235.00	19.68%	-8.21%	-0.66%
HDFCBANK	1925.20	18.50	0.97%	171.23	3306.19	1950.70	1.31%	1426.80	34.93%	7.70%	24.52%
HDFCLIFE	712.00	-8.05	-1.12%	61.68	437.95	761.20	6.46%	511.40	39.23%	5.95%	19.70%
HEROMOTOCO	3903.40	131.60	3.49%	10.31	399.31	6246.25	37.51%	3344.00	16.73%	3.93%	-10.49%
HINDALCO	622.10	12.60	2.07%	26.56	164.10	772.65	19.48%	546.45	13.84%	-12.35%	-0.85%
HINDUNILVR	2352.00	-23.00	-0.97%	14.78	348.05	3035.00	22.50%	2136.00	10.11%	5.73%	6.43%
ICICIBANK	1408.10	1.40	0.10%	168.82	2391.65	1436.00	1.94%	1048.10	34.35%	4.74%	31.81%
INDUSINDBK	826.95	32.25	4.06%	156.38	1292.28	1550.00	46.65%	606.00	36.46%	15.69%	-46.38%
INFY	1449.00	29.50	2.08%	156.48	2272.83	2006.45	27.78%	1307.00	10.86%	-10.87%	0.58%
ITC	422.95	-4.30	-1.01%	273.87	1157.11	528.50	19.97%	390.15	8.41%	5.35%	0.59%
JIOFIN	245.96	-0.51	-0.21%	317.74	784.86	394.70	37.68%	198.65	23.82%	7.57%	-33.40%
JSWSTEEL	1037.50	30.30	3.01%	13.45	138.41	1074.90	3.48%	823.80	25.94%	-4.86%	16.47%
KOTAKBANK	2248.70	60.60	2.77%	48.86	1091.39	2261.20	0.55%	1543.85	45.66%	5.25%	22.06%
LT	3279.90	32.60	1.00%	16.43	537.82	3963.50	17.25%	2965.30	10.61%	-4.94%	-7.70%
M&M	2765.00	85.60	3.19%	31.21	855.81	3270.95	15.47%	1998.20	38.37%	-4.37%	28.64%
MARUTI	11769.00	74.00	0.63%	3.18	372.65	13680.00	13.97%	10725.00	9.73%	-0.32%	-7.99%
NESTLEIND	2404.80	-11.80	-0.49%	4.76	114.60	2778.00	13.43%	2110.00	13.97%	6.51%	-0.87%
NTPC	364.45	0.45	0.12%	73.76	269.80	448.45	18.73%	292.80	24.47%	3.62%	3.84%
ONGC	249.00	5.51	2.26%	116.98	290.44	345.00	27.83%	205.00	21.46%	0.44%	-11.54%
POWERGRID	320.00	11.00	3.56%	133.68	424.43	366.25	12.63%	247.30	29.40%	9.15%	9.71%
RELIANCE	1295.20	20.70	1.62%	104.30	1346.96	1608.80	19.49%	1114.85	16.18%	-0.14%	-56.65%
SBILIFE	1630.10	21.90	1.36%	10.16	164.72	1936.00	15.80%	1307.70	24.65%	4.00%	11.10%
SBIN	817.20	19.75	2.48%	163.97	1339.64	912.00	10.39%	680.00	20.18%	5.87%	6.26%
SHRIRAMFIN	703.00	11.25	1.63%	67.41	474.72	730.45	3.76%	438.60	60.28%	2.21%	-70.77%
SUNPHARMA	1746.40	-5.10	-0.29%	15.40	268.60	1960.35	10.91%	1377.20	26.81%	-1.85%	15.02%
TATACONSUM	1121.70	1.50	0.13%	6.93	77.61	1250.10	10.27%	882.90	27.05%	16.54%	-1.57%
TATAMOTORS	630.25	8.70	1.40%	127.85	803.06	1179.00	46.54%	535.75	17.64%	-11.58%	-35.47%
TATASTEEL	139.50	2.36	1.72%	265.03	368.60	184.60	24.43%	122.62	13.77%	-12.81%	-15.40%
TCS	3319.00	20.10	0.61%	24.33	809.08	4592.25	27.73%	3056.05	8.60%	-7.80%	-13.78%
TECHM	1374.00	67.20	5.14%	37.59	513.31	1807.70	23.99%	1162.95	18.15%	-7.27%	9.48%
TITAN	3345.00	17.50	0.53%	6.72	223.77	3867.00	13.50%	2925.00	14.36%	5.21%	-6.61%
TRENT	5352.00	221.50	4.32%	13.09	692.14	8345.00	35.87%	3964.05	35.01%	-0.38%	23.36%
ULTRACEMCO	11931.00	30.00	0.25%	2.31	276.37	12145.35	1.76%	9250.00	28.98%	8.42%	27.09%
WIPRO	238.30	1.40	0.59%	162.96	389.67	324.60	26.59%	208.50	14.29%	-10.37%	-47.68%
ETERNAL	234.22	2.62	1.13%	660.28	1532.64	304.70	23.13%	146.30	60.10%	#VALUE!	#VALUE!

Disclaimer / Disclosures

ANALYST CERTIFICATION

I, Mrs. Vaishali Parekh B.com, Research Analyst, author and the name subscribed to this report, hereby certify that all of the views expressed in this research report accurately reflect our views about the subject issuer(s) or securities. We also certify that no part of our compensation was, is, or will be directly or indirectly related to the specific recommendation(s) or view(s) in this report.

Terms & conditions and other disclosures:

Prabhudas Lilladher Pvt. Ltd, Mumbai, India (hereinafter referred to as "PL") is engaged in the business of Stock Broking, Portfolio Manager, Depository Participant and distribution for third party financial products. PL is a subsidiary of Prabhudas Lilladher Advisory Services Pvt Ltd. which has its various subsidiaries engaged in business of commodity broking, investment banking, financial services (margin funding) and distribution of third party financial/other products, details in respect of which are available at www.plindia.com

This document has been prepared by the Research Division of PL and is meant for use by the recipient only as information and is not for circulation. This document is not to be reported or copied or made available to others without prior permission of PL. It should not be considered or taken as an offer to sell or a solicitation to buy or sell any security.

The information contained in this report has been obtained from sources that are considered to be reliable. However, PL has not independently verified the accuracy or completeness of the same. Neither PL nor any of its affiliates, its directors or its employees accepts any responsibility of whatsoever nature for the information, statements and opinion given, made available or expressed herein or for any omission therein.

Recipients of this report should be aware that past performance is not necessarily a guide to future performance and value of investments can go down as well. The suitability or otherwise of any investments will depend upon the recipient's particular circumstances and, in case of doubt, advice should be sought from an independent expert/advisor.

Either PL or its affiliates or its directors or its employees or its representatives or its clients or their relatives may have position(s), make market, act as principal or engage in transactions of securities of companies referred to in this report and they may have used the research material prior to publication.

PL may from time to time solicit or perform investment banking or other services for any company mentioned in this document.

PL is registered as Research Analyst under Securities and Exchange Board of India (Research Analysts) Regulations, 2014 PL submits that no material disciplinary action has been taken on us by any Regulatory Authority impacting Equity Research Analysis activities.

PL or its research analysts or its associates or his relatives do not have any financial interest in the subject company.

PL or its research analysts or its associates or his relatives do not have actual/beneficial ownership of one per cent or more securities of the subject company at the end of the month immediately preceding the date of publication of the research report.

PL or its research analysts or its associates or his relatives do not have any material conflict of interest at the time of publication of the research report.

PL or its associates might have received compensation from the subject company in the past twelve months.

PL or its associates might have managed or co-managed public offering of securities for the subject company in the past twelve months or mandated by the subject company for any other assignment in the past twelve months.

PL or its associates might have received any compensation for investment banking or merchant banking or brokerage services from the subject company in the past twelve months.

PL or its associates might have received any compensation for products or services other than investment banking or merchant banking or brokerage services from the subject company in the past twelve months PL or its associates might have received any compensation or other benefits from the subject company or third party in connection with the research report.

PL encourages independence in research report preparation and strives to minimize conflict in preparation of research report. PL or its analysts did not receive any compensation or other benefits from the subject Company or third party in connection with the preparation of the research report. PL or its Research Analysts do not have any material conflict of interest at the time of publication of this report.

It is confirmed that Mrs.Vaishali Parekh B.com, Research Analyst of this report has not received any compensation from the companies mentioned in the report in the preceding twelve months compensation of our Research Analysts is not based on any specific merchant banking, investment banking or brokerage service transactions.

The Research analysts for this report certifies that all of the views expressed in this report accurately reflect his or her personal views about the subject company or companies and its or their securities, and no part of his or her compensation was, is or will be, directly or indirectly related to specific recommendations or views expressed in this report.

The research analysts for this report has not served as an officer, director or employee of the subject company PL or its research analysts have not engaged in market making activity for the subject company

Our sales people, traders, and other professionals or affiliates may provide oral or written market commentary or trading strategies to our clients that reflect opinions that are contrary to the opinions expressed herein, and our proprietary trading and investing businesses may make investment decisions that are inconsistent with the recommendations expressed herein. In reviewing these materials, you should be aware that any or all of the foregoing, among other things, may give rise to real or potential conflicts of interest.

PL and its associates, their directors and employees may (a) from time to time, have a long or short position in, and buy or sell the securities of the subject company or (b) be engaged in any other transaction involving such securities and earn brokerage or other compensation or act as a market maker in the financial instruments of the subject company or act as an advisor or lender/borrower to the subject company or may have any other potential conflict of interests with respect to any recommendation and other related information and opinions.