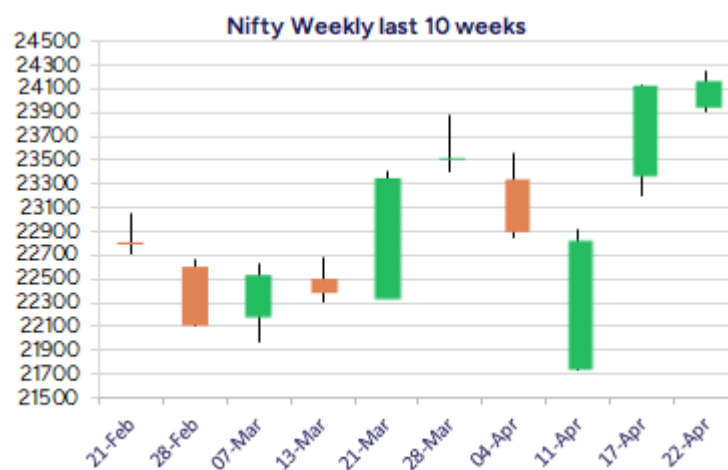
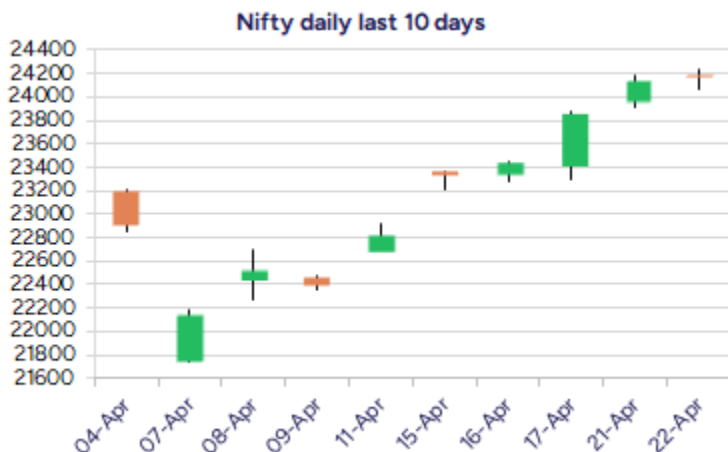


Date: 23<sup>rd</sup> April 2025

\* Sensex 79595.59 + 187.09

\* Nifty 24167.25 + 41.70

\* Bank Nifty 55647.20 + 342.70



\*Blue candle → Close rate > Open rate \* Red candle → Close rate < Open rate

## Market Preview

### Nifty takes a breather near 24200 zone

Nifty after the strong gains witnessed in the last 2 week took a breather halting near the 24200 zone and closed on marginal note with 40 points gain. BankNifty almost touched the 56000 zone with trend maintained strong and ended the session near 55650 level. The market breadth was once again positive with the advance decline indicating a ratio of 2:1 at close.

## Market Forecast

### Nifty daily range 24000-24300

Nifty, after the strong run witnessed in the last 2 weeks, finally halted near 24200 zone taking a breather and hovered near the important 200 period MA at 24050 taking support with bias maintained positive having the near-term significant support positioned near 23800 zone which once sustained, can expect for further upward move in the coming days. The undertone has been maintained strong and with the trend getting stronger, one can anticipate positive gains in the coming days with higher targets visible.

BankNifty, extended the gains further but witnessed some resistance near the 56000 zone after the overheated sessions witnessed in the last 2 weeks and some profit booking cannot be ruled out in the coming sessions. The zone near 55500 level would be the near-term support for the index which if sustained, thereafter can expect for further upward move in the coming days with the upside targets of 56200 and 57500 levels, still open for the index.

The support for the day is seen at 24000 levels while the resistance is seen at 24300 levels. BankNifty would have the daily range of 55000-56400 levels.

Indices	Period	Closing	% Chng	Trend	Reversal	2 Sup	1 Sup	Pivot	1 Res	2 Res
Nifty	Daily	24167.25	0.17%	6	23663.35	23990	24079	24161	24249	24331
	Weekly	23851.65	4.48%	5	22874.25	23102	23477	23674	24048	24245
	Monthly	23519.35	0.05%	-6	25020.35	21213	22366	23118	24271	25022
Bank Nifty	Daily	55647.20	0.62%	5	54416.25	54900	55273	55617	55991	56335
	Weekly	54290.20	6.45%	5	51255.25	50990	52640	53519	55170	56049
	Monthly	51564.85	3.99%	-6	52195.95	46118	48841	50451	53175	54785
Sensex	Daily	79595.59	0.24%	6	77892.35	78987	79291	79558	79862	80129
	Weekly	78553.20	4.52%	5	75251.85	75708	77131	77872	79295	80036
	Monthly	77414.92	-0.11%	-6	82130.50	70156	73785	76263	79893	82371

## Daily Trend turned Up

Scrip Name	LCP	Curr Trnd	Reversal
BATAIN	1227	-1	1221.55
GLENMARK	1390.8	-9	1362.6
HINDUNILVR	2398.7	-1	2375.05

## Daily Trend turned Down

Scrip Name	LCP	Curr Trnd	Reversal
CHOLAFIN	1566.4	5	1585.05
GLAXO	2809.3	4	2841.85
KSCL	1479.8	1	1529.1
NCC	217.7	4	218.1
NTPC	360.25	5	361.95
SHREECEM	30910	2	31017.75
TORNTPOWER	1589.5	5	1594.65
TTKPRESTIG	650.45	12	652.7
WIPRO	234.15	4	235.45

\* Trends turned Up after a significant period

\* Trends turned Down after a significant period

## Gainers - Losers ( Nifty 500 Stocks )

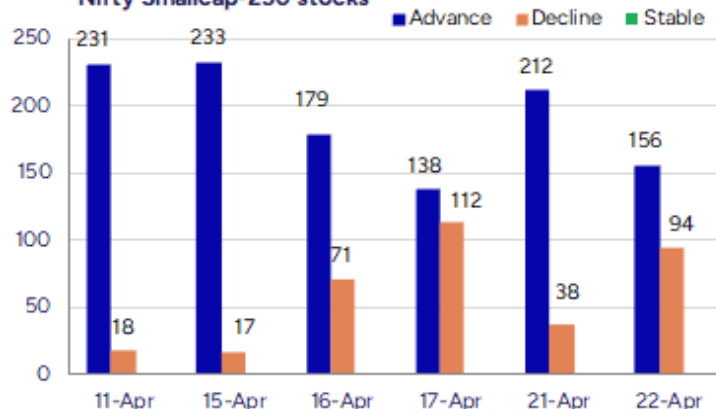
## Gainers

Company Name	Last Price	% Gain	Volume
Agri-Tech	172.89	20	103672
Manaksia Steels	60.18	20	1810615
Rajratan Global	390.15	19.99	809791
Indowind Energy	21.68	19.98	1048896
Vaswani Ind	46.9	19.98	622425
Alok Industries	19.49	18.34	163921811
Anjani Portland	136.11	18.26	210168

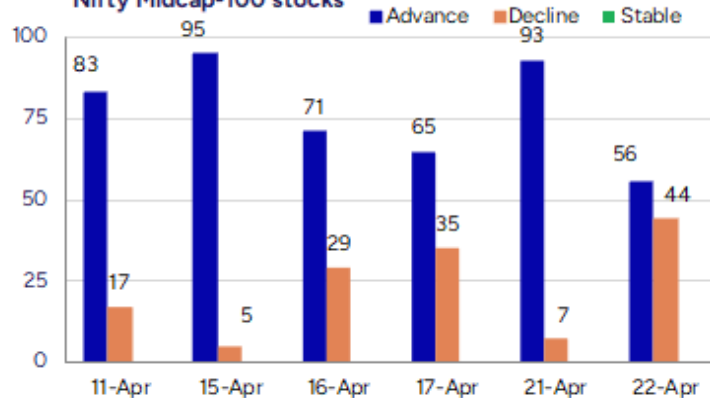
## Losers

Company Name	Last Price	% Loss	Volume
Service Care	64	-8.44	8000
Rajgor Castor	20	-7.83	12000
Jindal Drilling	736.5	-7.57	553158
Arihant Academy	272	-7.17	2400
GNA Axles	347.8	-7.04	706951
V L Infraprojec	55.55	-5.93	51000
APS India	412.65	-5.88	192500

## Nifty Smallcap-250 stocks



## Nifty Midcap-100 stocks



## Nifty Daily chart with RSI indicator



## BankNifty Daily chart with RSI indicator



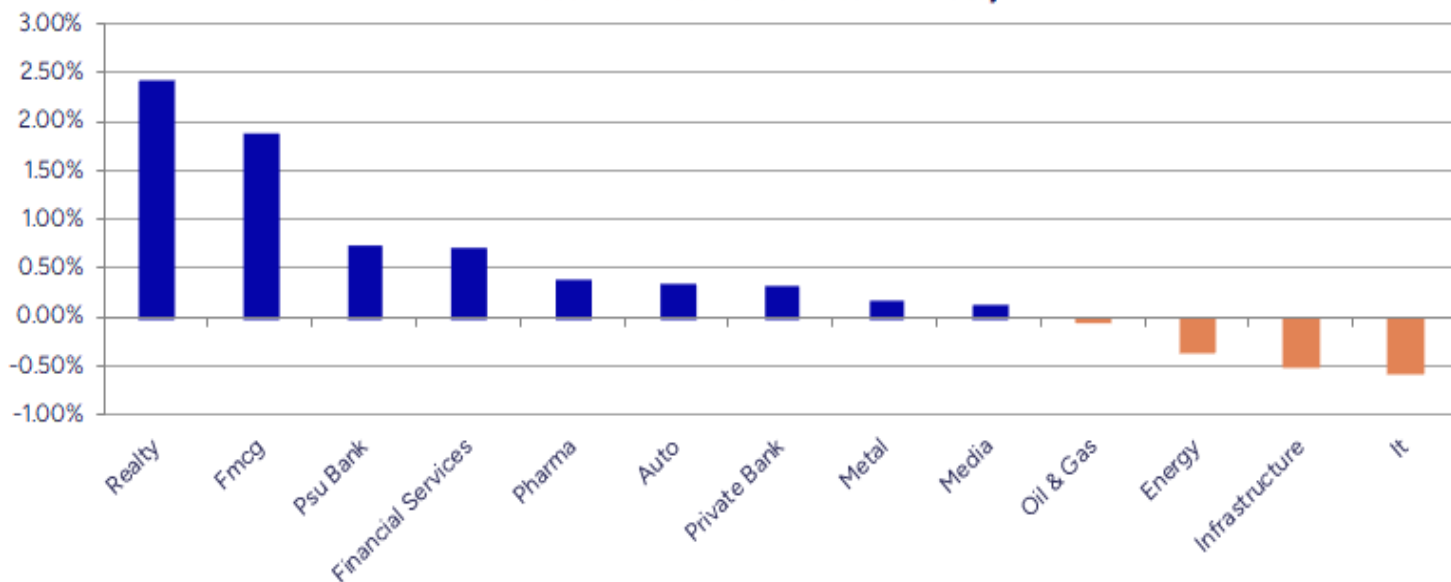
Breakouts - Cross above 200 DMA			
Company Name	LCP	Change %	200 DMA
Asahi India	715.3	5.41	678.56
Prakash Ind	180.71	5.05	172.02
The Byke Hosp	79.45	4.82	75.8
Kohinoor Foods	41.45	3.86	39.91
ILandFS Engg	39.43	3.85	37.97
Sah Polymers	90.07	3.65	86.9
Parag Milk Food	192.53	3.51	186.01
Manaksia Steels	60.18	3.30	58.26
Indian Card	287.3	2.92	279.15
Lumax Inds	2600.1	2.81	2528.99
Softtech Engine	395.45	2.71	385.02
Manoj Vaibhav G	247.91	2.38	242.14
RPG Life	2257.6	2.20	2208.99
Tribhovandas	217.83	2.09	213.38
Sampann Utpadan	33.45	2.04	32.78
CARE Ratings	1216.6	2.01	1192.57
Nippon	661.95	1.87	649.83
Magadh Sugar	716.8	167.00%	705

\* Stocks crossing above its Simple Moving Average (200DMA)

Breakdown - Cross below 200 DMA			
Company Name	LCP	Change %	200 DMA
Shah Alloys	64.13	-4.72	67.31
Krsnaa	786.45	-2.59	807.4
SAR Televenture	276.7	-1.87	281.97
LE Travenues Te	150.34	-1.22	152.2
Datamatics Glob	607.35	-1.12	614.26
JSW Infra	303.75	-0.93	306.61
BLS Internation	397.5	-0.80	400.72
Silkflex Poly	75.8	-0.76	76.38
Power Grid Corp	312.55	-0.74	314.87
MOS Utility	259.75	-0.73	261.67
NBI Industrial	2534.4	-0.72	2552.7
Arihant Super	389.65	-0.67	392.28
Centum Electron	1688.4	-0.55	1697.82
Texmo Pipes	65.64	-0.52	65.98
Hindustan Aeron	4286	-0.49	4307.22
Mirae NYSEFANG	112.5	-0.37	112.92
Vishnu Chemical	426.6	-0.34	428.04
South West Pinn	124.06	-0.23	124.35

\* Stocks crossing below its Simple Moving Average (200DMA)

Sectoral Indices - Gainers Losers for the day



Stocks witnessing a volume surge as compared to their 5 day average volume

Watch out for the stocks that have seen a huge spurt in its share price over the last three days

Volume Shockers - NSE					
Company name	LCP	% Chg	Volume	Avg Vol *	% Chg
BEW Engineering	217.9	-4.6	1125	10833	123000
Diamond Power	107.34	7.94	6800	6465	446440
Asahi India	715.3	6.56	72514	6292	4635392
Data Patterns	2130.1	8.73	106334	3939	4294969
Liberty Shoes	425.95	4.45	30282	3613	1124225
Transformers	574.2	4.99	131705	3154	4285051
Ravi Kumar Dist	31.72	12.01	21572	3044	678231
Krishna Institu	683.6	3.46	59456	2972	1826784
Hind Motors	28.3	0.04	416435	2362	10251417
Laxmi Goldorna	502.85	0.8	1094	2308	26342
Kajaria Ceramic	814.1	-0.64	84513	2306	2033081
G-Tec Jainx	29.47	5.29	2151	2147	48330
Spandana Sphoor	323.24	-0.79	145941	1976	3030156
Banco Products	405.35	12.38	98933	1877	1956394
Manaksia Steels	60.18	20	97401	1759	1810615
Som Distillerie	142.35	10.88	754640	1670	13359987
Sundram	915.35	0.05	64845	1629	1120867
HEG	479.4	-0.17	80062	1538	1311644
Ashima	28.64	7.43	131890	1521	2137668
Mahindra Logist	316.1	2.81	67500	1515	1090030

\* the Average Volume of last 5 days

Price Shockers - NSE				
Company name	LCP	Prv Close	% Chg	Volume
Liberty Shoes	425.95	339.85	25.33	1124225
Rajratan Global	390.15	311.5	25.25	809791
Indowind Energy	21.68	17.5	23.89	1048896
Chetana Educati	109.45	90	21.61	96000
Alok Industries	19.49	16.12	20.91	163921811
Pulz Electronic	59.2	49.05	20.69	56000
Vaswani Ind	46.9	38.91	20.53	622425
Agri-Tech	172.89	143.57	20.42	103672
Madhav Copper	61.13	50.8	20.33	676279
Sampann Utpadan	33.45	27.8	20.32	226170
Kohinoor Foods	41.45	34.53	20.04	626672
Hind Motors	28.3	23.58	20.02	10251417
Zenithexpo	273.46	230.47	18.65	4644
Manaksia Steels	60.18	50.82	18.42	1810615
Anjani Portland	136.11	115.34	18.01	210168
Tilaknagar Ind	297.36	253.81	17.16	11538924
Indian Card	287.3	246.22	16.68	100933
Essar Shipping	35.15	30.44	15.47	137228
Texmo Pipes	65.64	57.03	15.1	594155
Smartlink Net	156.9	137.22	14.34	32040

\* the % price rise of the last 3 days



Nifty 50 stocks - Summary Details											
Symbol	LTP	Chng	% Chng	Volume (lacs)	Turnover (crs.)	52w High	Diff with 52w H	52w Low	Diff with 52w L	365 days % chng	30 days % chng
NIFTY 50	24167.25	41.70	0.17%	4409.27	35478.45	26277.35	8.03%	21281.45	13.56%	3.32%	8.93%
ADANIENT	2442.90	0.20	0.01%	7.67	188.77	3743.90	34.75%	2025.00	20.64%	3.38%	-19.30%
ADANIPTS	1228.20	-14.90	-1.20%	29.32	365.16	1621.40	24.25%	995.65	23.36%	4.57%	-5.11%
APOLLOHOSP	7071.50	-71.00	-0.99%	3.06	217.11	7545.35	6.28%	5693.20	24.21%	8.03%	15.77%
ASIANPAINT	2428.00	-17.00	-0.70%	5.44	132.37	3394.90	28.48%	2124.75	14.27%	6.29%	-12.94%
AXISBANK	1215.20	-7.80	-0.64%	84.62	1033.06	1339.65	9.29%	933.50	30.18%	14.28%	18.84%
BAJAJ-AUTO	8135.00	-112.50	-1.36%	3.95	320.55	12774.00	36.32%	7089.35	14.75%	2.23%	-6.33%
BAJAJFINSV	2074.00	-29.50	-1.40%	14.48	302.08	2118.70	2.11%	1419.05	46.15%	13.87%	29.93%
BAJFINANCE	9235.00	-38.50	-0.42%	11.29	1053.13	9393.00	1.68%	6375.70	44.85%	4.01%	30.25%
BEL	303.50	3.55	1.18%	119.62	362.68	340.50	10.87%	221.00	37.33%	1.42%	28.57%
BHARTIARTL	1848.20	-35.20	-1.87%	61.55	1142.67	1904.30	2.95%	1219.05	51.61%	9.13%	46.11%
CIPLA	1523.00	11.90	0.79%	9.55	145.54	1702.05	10.52%	1317.25	15.62%	-0.84%	12.29%
COALINDIA	399.40	-1.10	-0.27%	75.58	303.52	543.55	26.52%	349.25	14.36%	-1.21%	-7.99%
DRREDDY	1175.10	-2.30	-0.20%	13.13	154.17	1421.49	17.33%	1020.00	15.21%	-1.90%	-80.19%
EICHERMOT	5789.00	-21.50	-0.37%	4.60	267.92	5906.50	1.99%	4253.85	36.09%	9.51%	33.75%
GRASIM	2737.70	-19.20	-0.70%	2.11	58.19	2877.75	4.87%	2171.60	26.07%	11.64%	21.28%
HCLTECH	1485.90	3.90	0.26%	26.08	386.08	2012.20	26.16%	1235.00	20.32%	-5.41%	2.38%
HDFCBANK	1960.00	32.90	1.71%	229.81	4497.70	1970.60	0.54%	1426.80	37.37%	8.85%	25.85%
HDFCLIFE	708.60	-3.60	-0.51%	26.69	190.78	761.20	6.91%	511.40	38.56%	4.80%	18.39%
HEROMOTOCO	3837.90	-79.10	-2.02%	9.28	355.97	6246.25	38.56%	3344.00	14.77%	7.94%	-7.04%
HINDALCO	619.15	-2.85	-0.46%	49.71	309.96	772.65	19.87%	546.45	13.30%	-10.55%	1.18%
HINDUNILVR	2403.00	52.00	2.21%	23.52	561.18	3035.00	20.82%	2136.00	12.50%	4.67%	5.35%
ICICIBANK	1414.00	4.20	0.30%	161.35	2276.09	1436.00	1.53%	1051.05	34.53%	4.97%	32.10%
INDUSINDBK	788.55	-39.65	-4.79%	256.98	2037.93	1550.00	49.13%	606.00	30.12%	20.57%	-44.12%
INFY	1423.00	-28.00	-1.93%	93.99	1339.55	2006.45	29.08%	1307.00	8.88%	-8.89%	2.82%
ITC	432.85	10.00	2.36%	320.32	1370.83	528.50	18.10%	390.15	10.94%	4.27%	-0.45%
JIOFIN	250.60	4.22	1.71%	302.32	750.00	394.70	36.51%	198.65	26.15%	7.53%	-33.43%
JSWSTEEL	1044.90	10.90	1.05%	21.54	225.06	1074.90	2.79%	823.80	26.84%	-2.33%	19.57%
KOTAKBANK	2265.00	23.60	1.05%	67.33	1535.85	2301.90	1.60%	1543.85	46.71%	7.81%	25.03%
LT	3254.00	-26.50	-0.81%	20.60	673.06	3963.50	17.90%	2965.30	9.74%	-3.97%	-6.76%
M&M	2811.10	47.10	1.70%	31.94	894.24	3270.95	14.06%	2001.00	40.48%	-1.35%	32.70%
MARUTI	11744.00	-1.00	-0.01%	5.17	604.75	13680.00	14.15%	10725.00	9.50%	0.10%	-7.60%
NESTLEIND	2409.40	10.00	0.42%	4.88	117.44	2778.00	13.27%	2110.00	14.19%	5.75%	-1.57%
NTPC	360.45	-4.10	-1.12%	120.77	437.46	448.45	19.62%	292.80	23.10%	3.77%	3.99%
ONGC	248.00	-1.78	-0.71%	98.96	246.23	345.00	28.12%	205.00	20.98%	3.04%	-9.25%
POWERGRID	313.25	-6.75	-2.11%	100.27	315.29	366.25	14.47%	247.30	26.67%	13.03%	13.62%
RELIANCE	1289.00	-6.50	-0.50%	130.51	1691.45	1608.80	19.88%	1114.85	15.62%	1.50%	-55.94%
SBILIFE	1619.60	-8.90	-0.55%	11.02	178.96	1936.00	16.34%	1307.70	23.85%	5.31%	12.50%
SBIN	821.30	4.60	0.56%	251.17	2078.00	912.00	9.95%	680.00	20.78%	8.43%	8.83%
SHRIRAMFIN	700.05	-2.95	-0.42%	36.72	258.58	730.45	4.16%	438.60	59.61%	3.87%	-70.29%
SUNPHARMA	1748.40	3.50	0.20%	9.62	167.80	1960.35	10.81%	1377.20	26.95%	-2.22%	14.58%
TATACONSUM	1138.60	17.60	1.57%	12.32	140.23	1250.10	8.92%	882.90	28.96%	16.63%	-1.50%
TATAMOTORS	630.50	0.45	0.07%	102.92	649.44	1179.00	46.52%	535.75	17.69%	-10.37%	-34.59%
TATASTEEL	137.97	-1.21	-0.87%	584.28	816.48	184.60	25.26%	122.62	12.52%	-11.51%	-14.14%
TCS	3312.50	-9.10	-0.27%	27.10	898.59	4592.25	27.87%	3056.05	8.39%	-7.17%	-13.19%
TECHM	1370.10	-3.40	-0.25%	24.71	340.83	1807.70	24.21%	1172.80	16.82%	-2.54%	15.07%
TITAN	3341.30	5.20	0.16%	6.09	203.34	3867.00	13.59%	2925.00	14.23%	5.48%	-6.37%
TRENT	5309.00	-51.00	-0.95%	11.67	624.07	8345.00	36.38%	4052.40	31.01%	4.08%	28.88%
ULTRACEMCO	11917.00	-17.00	-0.14%	3.35	400.90	12145.35	1.88%	9408.05	26.67%	8.72%	27.45%
WIPRO	234.00	-4.45	-1.87%	183.66	432.98	324.60	27.91%	208.50	12.23%	-9.78%	-47.33%
ETERNAL	236.57	2.33	0.99%	596.66	1424.47	304.70	22.36%	146.30	61.70%	#VALUE!	#VALUE!

## Disclaimer / Disclosures

### ANALYST CERTIFICATION

I, Mrs. Vaishali Parekh B.com, Research Analyst, author and the name subscribed to this report, hereby certify that all of the views expressed in this research report accurately reflect our views about the subject issuer(s) or securities. We also certify that no part of our compensation was, is, or will be directly or indirectly related to the specific recommendation(s) or view(s) in this report.

Terms & conditions and other disclosures:

Prabhudas Lilladher Pvt. Ltd, Mumbai, India (hereinafter referred to as "PL") is engaged in the business of Stock Broking, Portfolio Manager, Depository Participant and distribution for third party financial products. PL is a subsidiary of Prabhudas Lilladher Advisory Services Pvt Ltd. which has its various subsidiaries engaged in business of commodity broking, investment banking, financial services (margin funding) and distribution of third party financial/other products, details in respect of which are available at [www.plindia.com](http://www.plindia.com)

This document has been prepared by the Research Division of PL and is meant for use by the recipient only as information and is not for circulation. This document is not to be reported or copied or made available to others without prior permission of PL. It should not be considered or taken as an offer to sell or a solicitation to buy or sell any security.

The information contained in this report has been obtained from sources that are considered to be reliable. However, PL has not independently verified the accuracy or completeness of the same. Neither PL nor any of its affiliates, its directors or its employees accepts any responsibility of whatsoever nature for the information, statements and opinion given, made available or expressed herein or for any omission therein.

Recipients of this report should be aware that past performance is not necessarily a guide to future performance and value of investments can go down as well. The suitability or otherwise of any investments will depend upon the recipient's particular circumstances and, in case of doubt, advice should be sought from an independent expert/advisor.

Either PL or its affiliates or its directors or its employees or its representatives or its clients or their relatives may have position(s), make market, act as principal or engage in transactions of securities of companies referred to in this report and they may have used the research material prior to publication.

PL may from time to time solicit or perform investment banking or other services for any company mentioned in this document.

PL is registered as Research Analyst under Securities and Exchange Board of India (Research Analysts) Regulations, 2014 PL submits that no material disciplinary action has been taken on us by any Regulatory Authority impacting Equity Research Analysis activities.

PL or its research analysts or its associates or his relatives do not have any financial interest in the subject company.

PL or its research analysts or its associates or his relatives do not have actual/beneficial ownership of one per cent or more securities of the subject company at the end of the month immediately preceding the date of publication of the research report.

PL or its research analysts or its associates or his relatives do not have any material conflict of interest at the time of publication of the research report.

PL or its associates might have received compensation from the subject company in the past twelve months.

PL or its associates might have managed or co-managed public offering of securities for the subject company in the past twelve months or mandated by the subject company for any other assignment in the past twelve months.

PL or its associates might have received any compensation for investment banking or merchant banking or brokerage services from the subject company in the past twelve months.

PL or its associates might have received any compensation for products or services other than investment banking or merchant banking or brokerage services from the subject company in the past twelve months PL or its associates might have received any compensation or other benefits from the subject company or third party in connection with the research report.

PL encourages independence in research report preparation and strives to minimize conflict in preparation of research report. PL or its analysts did not receive any compensation or other benefits from the subject Company or third party in connection with the preparation of the research report. PL or its Research Analysts do not have any material conflict of interest at the time of publication of this report.

It is confirmed that Mrs.Vaishali Parekh B.com, Research Analyst of this report has not received any compensation from the companies mentioned in the report in the preceding twelve months compensation of our Research Analysts is not based on any specific merchant banking, investment banking or brokerage service transactions.

The Research analysts for this report certifies that all of the views expressed in this report accurately reflect his or her personal views about the subject company or companies and its or their securities, and no part of his or her compensation was, is or will be, directly or indirectly related to specific recommendations or views expressed in this report.

The research analysts for this report has not served as an officer, director or employee of the subject company PL or its research analysts have not engaged in market making activity for the subject company

Our sales people, traders, and other professionals or affiliates may provide oral or written market commentary or trading strategies to our clients that reflect opinions that are contrary to the opinions expressed herein, and our proprietary trading and investing businesses may make investment decisions that are inconsistent with the recommendations expressed herein. In reviewing these materials, you should be aware that any or all of the foregoing, among other things, may give rise to real or potential conflicts of interest.

PL and its associates, their directors and employees may (a) from time to time, have a long or short position in, and buy or sell the securities of the subject company or (b) be engaged in any other transaction involving such securities and earn brokerage or other compensation or act as a market maker in the financial instruments of the subject company or act as an advisor or lender/borrower to the subject company or may have any other potential conflict of interests with respect to any recommendation and other related information and opinions.