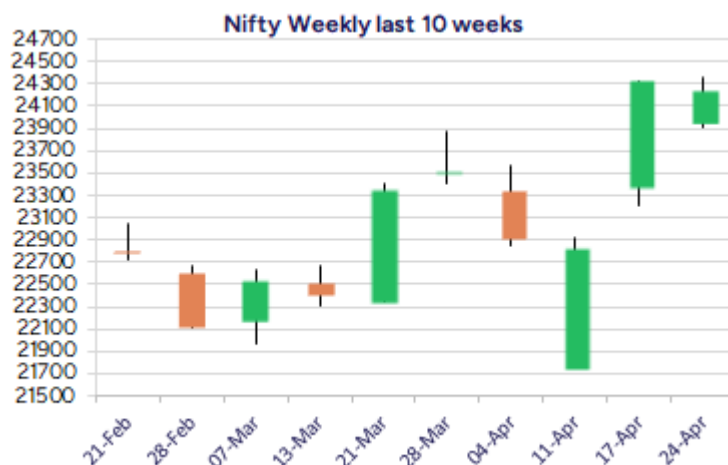
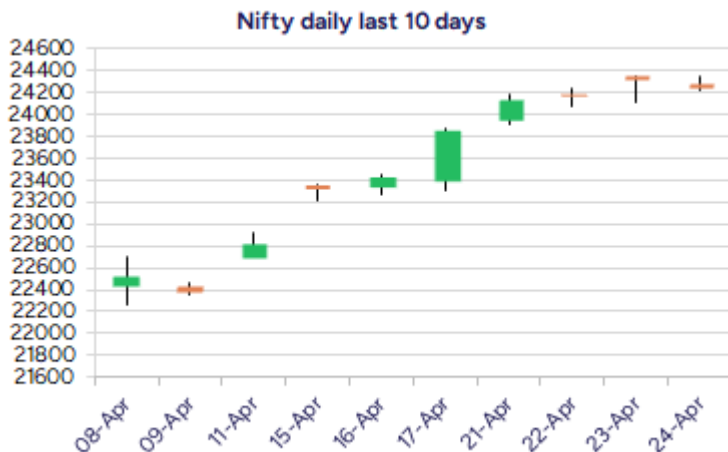


Date: 25th April 2025

* Sensex 79801.43 - 315.06

* Nifty 24246.70 - 82.25

* Bank Nifty 55201.40 - 168.65



*Blue candle → Close rate > Open rate * Red candle → Close rate < Open rate

Market Preview

Nifty takes a breather; ends near 24250 zone

Nifty after a strong move in the last 2 weeks took a breather to halt the winning streak to end the session near 24250 zone. BankNifty witnessed some profit booking to close near the 55200 level with bias and sentiment still maintained positive. The market breadth was overall flat with the advance decline indicating a neutral ratio at close.

Market Forecast

Nifty daily range 24100-24400

Nifty, after a long streak of 7 winning sessions finally took a breather and closed in the red near 24250 zone with bias and sentiment still maintained positive expecting for further continuation of the upward move after a short period of consolidation or perhaps, some correction anticipated. As mentioned earlier, the index would have the near-term significant support positioned near the 23800 zone which once sustained, can regain strength and with the overall trend maintained strong, can carry on with the positive move further ahead.

BankNifty, after the strong run up witnessed in the last 2 weeks witnessed some profit booking wiping off some gains to end near 55200 zone and has got the important support zone near 54500 level of the previous major peak zone which needs to be sustained in the coming sessions. Once a revival is established once again, the index can anticipate for further upside targets of 56200 and 57500 levels in the coming days. The support for the day is seen at 24100 levels while the resistance is seen at 24400 levels. BankNifty would have the daily range of 54800-55800 levels.

Indices	Period	Closing	% Chng	Trend	Reversal	2 Sup	1 Sup	Pivot	1 Res	2 Res
Nifty	Daily	24246.70	-0.34%	8	24118.40	24139	24193	24270	24324	24402
	Weekly	23851.65	4.48%	5	22874.25	23102	23477	23674	24048	24245
	Monthly	23519.35	0.05%	-6	25020.35	21213	22366	23118	24271	25022
Bank Nifty	Daily	55201.40	-0.30%	7	55152.60	54818	55010	55280	55472	55742
	Weekly	54290.20	6.45%	5	51255.25	50990	52640	53519	55170	56049
	Monthly	51564.85	3.99%	-6	52195.95	46118	48841	50451	53175	54785
Sensex	Daily	79801.43	-0.39%	8	79389.95	79451	79626	79900	80075	80349
	Weekly	78553.20	4.52%	5	75251.85	75708	77131	77872	79295	80036
	Monthly	77414.92	-0.11%	-6	82130.50	70156	73785	76263	79893	82371

Daily Trend turned Down			
Scrip Name	LCP	Curr Trnd	Reversal
AMARAJABAT	1000.1	6	1008.45
AMBUJACEM	572	8	574.4
BHARTIAIRTEL	1845.6	7	1877.1
BIOCON	326.75	6	330.3
CANFINHOME	708.65	6	726.2
CESC	158.6	6	160.1
EICHERMOT	5650.5	7	5726.8
GODREJIND	1140	8	1150.75
HDFCBANK	1916.8	7	1935.2
HINDUNILVR	2325.3	2	2411.05
JSWENERGY	503.8	6	508.8
JUSTDIAL	960.3	8	970.6

* Trends turned Down after a significant period

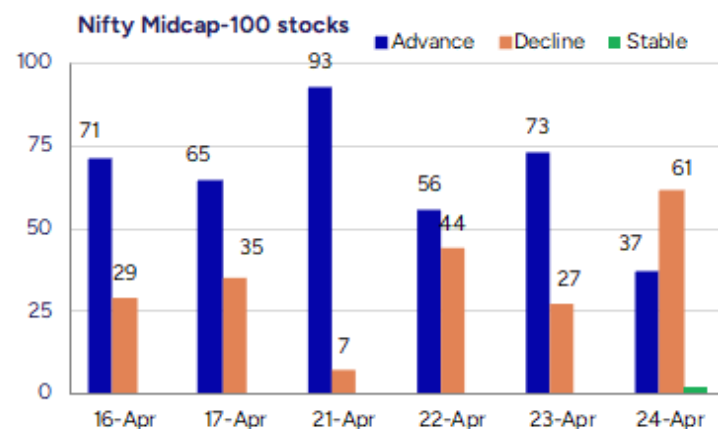
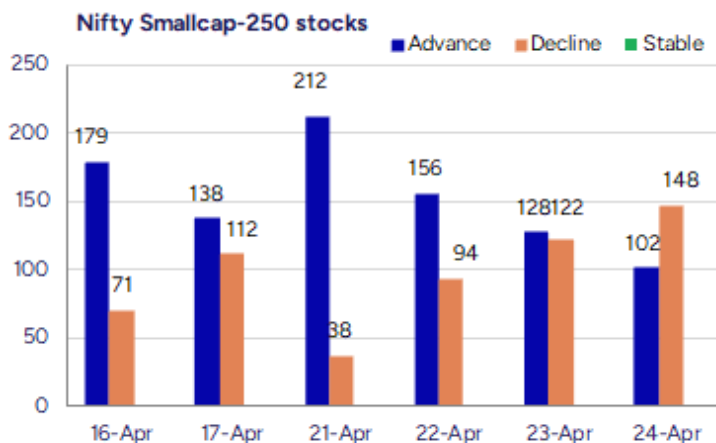
Daily Trend turned Down			
Scrip Name	LCP	Curr Trnd	Reversal
KANSAINER	265.9	9	266.25
MANAPPURAM	228.83	4	230.65
PAGEIND	45015	8	45596.5
PIIND	3658.4	7	3681.3
POWERGRID	314.4	7	316.7
RAYMOND	1537.5	9	1548.8
REPCOHOME	397.05	9	399.15
SYNGENE	653.4	6	733.4
UBL	2176.6	9	2203.25
VOLTAS	1276	4	1286.7
ZEETELE	113.95	6	114.35

* Trends turned Down after a significant period

Gainers - Losers (Nifty 500 Stocks)

Gainers			
Company Name	Last Price	% Gain	Volume
Purple United	241.5	20	308000
Eldeco Housing	880.6	20	23676
Repro India	556.95	19.99	508947
GSS Infotech	44.97	19.98	261378
Ganesh Infra	192.3	17.26	2424000
Trom Industries	198.4	16.02	117600
Indbank Merchan	37.7	15.01	995577

Losers			
Company Name	Last Price	% Loss	Volume
Syngene Intl	653.4	-12.78	20241141
Digicontent	39.57	-8.76	154235
Premium Plast	30.05	-8.1	24000
Precision Metal	23.05	-7.24	18000
Shree OSFM	122.05	-6.8	40000
DJ Mediaprint	121	-6.69	109623
Shankar Lal Ram	66.55	-6.58	74157



Nifty Daily chart with RSI indicator



BankNifty Daily chart with RSI indicator



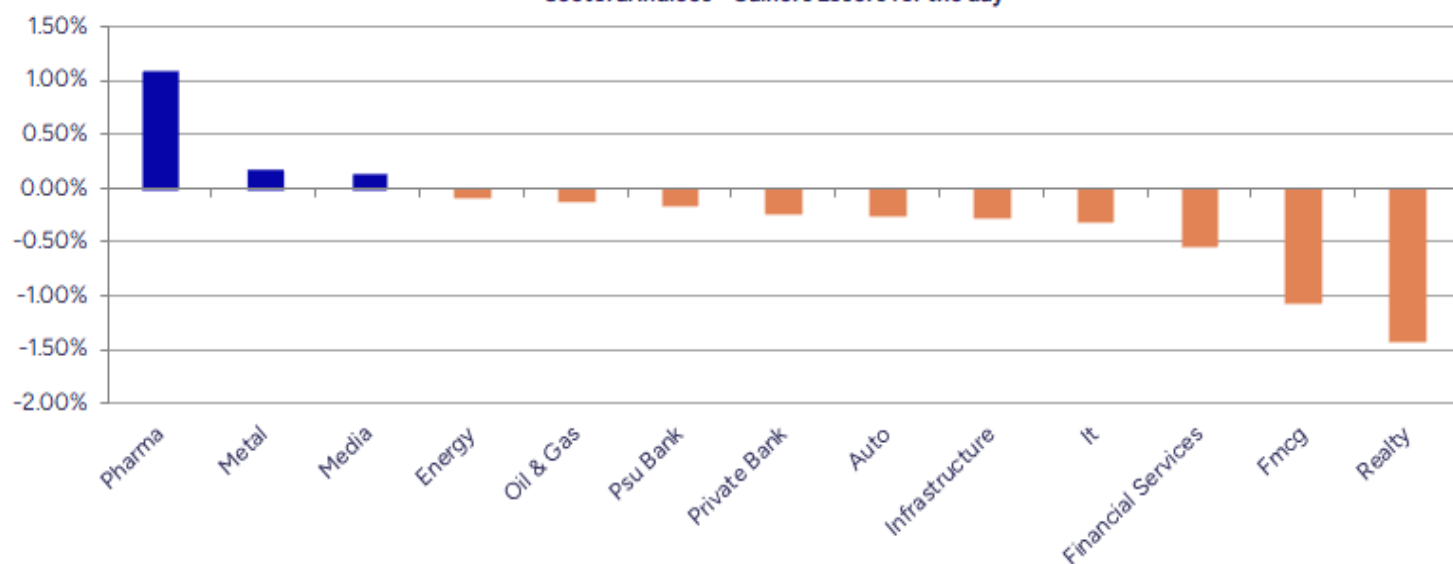
Breakouts - Cross above 200 DMA			
Company Name	LCP	Change %	200 DMA
Vaidya Sane	144.65	7.54	134.51
Vardhman Steels	270.55	7.41	251.89
Suven Life Sci	141.2	7.26	131.64
Triveni Engg	437.65	5.67	414.18
Samhi Hotels	193.29	5.48	183.24
Ameya Precision	114.4	4.36	109.62
Tamil Telecom	10.74	3.67	10.36
Pramara Promoti	153.6	3.57	148.31
Datamatics Glob	633.5	3.19	613.91
FIEM Ind	1524.5	2.98	1480.32
Eldeco Housing	880.6	2.92	855.63
Orient Electric	245.66	2.76	239.07
Alpa Labs	113.5	2.63	110.59
Thyrocare Techn	846.65	2.37	827.08
Repro India	556.95	1.86	546.79
ITD Cementation	541.55	1.73	532.32
TMB	456.55	1.55	449.58
Navneet	146.91	153.00%	144.69

* Stocks crossing above its Simple Moving Average (200DMA)

Breakdown - Cross below 200 DMA			
Company Name	LCP	Change %	200 DMA
Richa Info	76.75	-4.50	80.37
Kohinoor Foods	38.53	-3.39	39.88
Blue Star	1849.6	-3.30	1912.64
360 ONE WAM	1018.25	-3.10	1050.79
SJS Enterprises	977	-2.42	1001.24
GPT Infra	136.75	-2.19	139.81
Indo Borax	184.6	-2.00	188.36
EPack Durables	375.75	-1.90	383.03
Sinclairs Hotel	99.02	-1.87	100.91
Insecticides	727	-1.80	740.29
Pondy Oxides	780.1	-1.63	793.02
Yatharth HOSP	501.2	-1.48	508.72
HF	554.45	-1.45	562.61
S Chand and Co	206.48	-1.40	209.41
Ipca Labs	1445.7	-1.01	1460.44
Lumax Auto Tech	547.35	-0.71	551.29
Kalyani Forge	561.25	-0.58	564.51
ASK Auto	430.8	-0.36	432.36

* Stocks crossing below its Simple Moving Average (200DMA)

Sectoral Indices - Gainers Losers for the day



Stocks witnessing a volume surge as compared to their 5 day average volume

Watch out for the stocks that have seen a huge spurt in its share price over the last three days

Volume Shockers - NSE					
Company name	LCP	% Chg	Volume	Avg Vol *	% Chg
Newgen Software	1101.4	10.9	13076698	114472	11323
KIOCL	284.46	12.57	4691994	59510	7784
BEW Engineering	209.7	0.99	36000	1125	3100
Elecon Eng	540.3	2.64	5952889	198531	2898
Diamond Power	99.61	-4.57	200094	6800	2842
Mindteck	231.89	6.82	1270012	45376	2699
Samhi Hotels	193.29	11.12	24222576	968573	2401
Syngene Intl	653.4	-12.78	20241141	821095	2365
Supreme Ind	3511.7	-0.41	1473173	60306	2343
Thyrocare Techn	846.65	10.07	2069261	87355	2269
G-Tec Jainx	28.79	-4.29	48813	2151	2169
Remsons Ind	122.25	-1.25	461731	21094	2089
Natco Pharma	902.85	6.91	16724971	930798	1697
ICE Make Refrig	1045.95	5.5	330554	19855	1565
Krishna Institu	667.1	-3.5	984411	59456	1556
A B Infrabuild	83.76	6.88	251253	15200	1553
GlaxoSmithKline	2916	2.44	1963461	119715	1540
Dr Reddys Labs	1200.5	1.22	4818144	296967	1522
Nagreeka Cap	29.92	9.64	31563	1969	1503
TMB	456.55	3.55	1381843	90749	1423

* the Average Volume of last 5 days

Price Shockers - NSE				
Company name	LCP	Prv Close	% Chg	Volume
Primo Chemicals	27.91	3.15	786.03	133650
Vardhman Steels	270.55	203.26	33.11	1911190
Aptech	170.76	128.71	32.67	4664391
Infinium	311.7	236.5	31.8	25000
Rajratan Global	424.15	325.15	30.45	250611
Mindteck	231.89	181.47	27.78	1270012
Manaksia Steels	63.77	50.15	27.16	260756
Voler Car	111.7	90.5	23.43	297600
GSS Infotech	44.97	36.67	22.63	261378
Tamil Telecom	10.74	8.76	22.6	88115
Indowind Energy	21.92	18.07	21.31	593982
Zenithexpo	301.48	248.6	21.27	7318
Nagreeka Cap	29.92	24.92	20.06	31563
SEL Mgf Company	40.14	33.47	19.93	21703
Repro India	556.95	465.95	19.53	508947
Vaswani Ind	46.66	39.09	19.37	93110
Vaishali Pharma	14.78	12.43	18.91	0
Eldeco Housing	880.6	742.2	18.65	23676
Indian Card	298.99	252.66	18.34	97747
Indbank Merchan	37.7	32.08	17.52	995577

* the % price rise of the last 3 days

Nifty 50 stocks - Summary Details											
Symbol	LTP	Chng	% Chng	Volume (lacs)	Turnover (crs.)	52w High	Diff with 52w H	52w Low	Diff with 52w L	365 days % chng	30 days % chng
NIFTY 50	24246.70	-82.25	-0.34%	3587.50	33055.69	26277.35	7.73%	21281.45	13.93%	2.83%	8.77%
ADANIENT	2441.00	-12.60	-0.51%	5.97	145.65	3743.90	34.80%	2025.00	20.54%	3.58%	-19.95%
ADANIPTS	1236.00	-3.10	-0.25%	21.33	264.27	1621.40	23.77%	995.65	24.14%	3.19%	-6.28%
APOLLOHOSP	7130.00	-12.00	-0.17%	2.78	198.11	7545.35	5.50%	5693.20	25.24%	7.95%	15.29%
ASIANPAINT	2466.40	13.30	0.54%	12.03	296.73	3394.90	27.35%	2124.75	16.08%	5.62%	-14.67%
AXISBANK	1208.50	1.60	0.13%	90.78	1098.55	1339.65	9.79%	933.50	29.46%	9.93%	14.32%
BAJAJ-AUTO	8215.00	-46.50	-0.56%	3.22	265.40	12774.00	35.69%	7089.35	15.88%	1.67%	-6.07%
BAJAJFINSV	2103.30	2.50	0.12%	14.66	308.04	2135.00	1.48%	1419.05	48.22%	10.91%	29.59%
BAJFINANCE	9290.00	-33.00	-0.35%	18.49	1733.62	9660.00	3.83%	6375.70	45.71%	2.56%	28.42%
BEL	305.45	-0.40	-0.13%	172.40	526.87	340.50	10.29%	221.00	38.21%	1.24%	30.51%
BHARTIARTL	1846.10	-35.50	-1.89%	51.81	958.15	1904.30	3.06%	1219.05	51.44%	9.47%	40.17%
CIPLA	1554.00	20.30	1.32%	15.90	246.03	1702.05	8.70%	1317.25	17.97%	0.63%	13.89%
COALINDIA	399.80	0.85	0.21%	57.62	230.19	543.55	26.45%	349.25	14.47%	-1.74%	-9.52%
DRREDDY	1204.90	18.90	1.59%	48.20	576.26	1421.49	15.24%	1020.00	18.13%	-2.01%	-80.07%
EICHERMOT	5632.00	-108.00	-1.88%	5.04	285.99	5906.50	4.65%	4253.85	32.40%	5.82%	26.99%
GRASIM	2730.50	44.90	1.67%	5.62	152.90	2877.75	5.12%	2171.60	25.74%	6.86%	13.31%
HCLTECH	1590.30	-3.70	-0.23%	31.93	507.05	2012.20	20.97%	1235.00	28.77%	-0.63%	7.22%
HDFCBANK	1914.90	-9.00	-0.47%	129.66	2485.20	1978.90	3.23%	1426.80	34.21%	6.88%	27.61%
HDFCLIFE	705.00	-4.10	-0.58%	38.15	271.04	761.20	7.38%	511.40	37.86%	4.29%	17.96%
HEROMOTOCO	3962.90	22.40	0.57%	12.28	485.64	6246.25	36.56%	3344.00	18.51%	8.66%	-9.31%
HINDALCO	628.35	-0.75	-0.12%	33.68	211.72	772.65	18.68%	546.45	14.99%	-10.32%	2.83%
HINDUNILVR	2324.00	-99.80	-4.12%	70.65	1665.72	3035.00	23.43%	2136.00	8.80%	7.43%	7.12%
ICICIBANK	1401.00	-23.40	-1.64%	156.78	2207.18	1436.00	2.44%	1051.05	33.30%	4.88%	30.65%
INDUSINDBK	819.35	25.15	3.17%	225.77	1860.12	1550.00	47.14%	606.00	35.21%	18.63%	-46.14%
INFY	1473.00	-1.90	-0.13%	71.14	1046.89	2006.45	26.59%	1307.00	12.70%	-7.40%	2.25%
ITC	429.85	-1.00	-0.23%	260.64	1125.39	528.50	18.67%	390.15	10.18%	4.86%	0.38%
JIOFIN	258.94	0.80	0.31%	171.50	443.20	394.70	34.40%	198.65	30.35%	10.94%	-33.46%
JSWSTEEL	1044.00	4.80	0.46%	12.43	129.23	1074.90	2.87%	823.80	26.73%	-2.09%	22.06%
KOTAKBANK	2218.10	-8.90	-0.40%	41.68	928.02	2301.90	3.64%	1543.85	43.67%	2.34%	22.83%
LT	3298.20	-2.80	-0.08%	19.93	656.46	3963.50	16.79%	2965.30	11.23%	-5.19%	-8.56%
M&M	2898.00	-19.80	-0.68%	24.88	719.96	3270.95	11.40%	2001.00	44.83%	5.16%	41.46%
MARUTI	11901.00	-6.00	-0.05%	3.88	462.24	13680.00	13.00%	10725.00	10.97%	-0.13%	-8.38%
NESTLEIND	2427.00	-6.40	-0.26%	23.37	569.77	2778.00	12.63%	2110.00	15.02%	7.50%	-2.71%
NTPC	363.45	-0.35	-0.10%	74.90	272.08	448.45	18.95%	292.80	24.13%	-0.86%	4.80%
ONGC	249.69	-2.48	-0.98%	65.38	163.13	345.00	27.63%	205.00	21.80%	3.42%	-8.90%
POWERGRID	314.00	-0.95	-0.30%	80.21	252.27	366.25	14.27%	247.30	26.97%	7.92%	10.37%
RELIANCE	1303.50	3.50	0.27%	104.68	1359.13	1608.80	18.98%	1114.85	16.92%	-0.16%	-55.46%
SBILIFE	1615.00	-0.50	-0.03%	8.57	138.53	1936.00	16.58%	1307.70	23.50%	2.91%	9.91%
SBIN	812.00	-1.45	-0.18%	127.13	1035.96	912.00	10.96%	680.00	19.41%	4.18%	5.23%
SHRIRAMFIN	698.90	-5.00	-0.71%	50.10	349.66	730.45	4.32%	438.60	59.35%	3.21%	-71.00%
SUNPHARMA	1806.90	18.10	1.01%	21.01	377.33	1960.35	7.83%	1377.20	31.20%	0.22%	20.49%
TATACONSUM	1160.90	10.80	0.94%	57.65	657.45	1250.10	7.14%	882.90	31.49%	18.51%	-1.98%
TATAMOTORS	667.90	8.00	1.21%	151.72	1010.48	1179.00	43.35%	535.75	24.67%	-7.51%	-33.12%
TATASTEEL	141.44	0.28	0.20%	230.57	325.93	184.60	23.38%	122.62	15.35%	-10.90%	-12.40%
TCS	3406.00	-7.00	-0.21%	22.52	765.47	4592.25	25.83%	3056.05	11.45%	-5.95%	-11.92%
TECHM	1446.60	7.00	0.49%	25.01	362.08	1807.70	19.98%	1172.80	23.35%	-1.31%	19.94%
TITAN	3387.00	29.70	0.88%	9.02	304.27	3867.00	12.41%	2925.00	15.79%	9.04%	-7.59%
TRENT	5320.00	-9.00	-0.17%	10.40	554.03	8345.00	36.25%	4052.40	31.28%	5.43%	28.15%
ULTRACEMCO	12175.00	226.00	1.89%	3.40	411.16	12188.00	0.11%	9408.05	29.41%	8.12%	25.34%
WIPRO	242.70	-0.90	-0.37%	230.00	559.00	324.60	25.23%	208.50	16.40%	-9.58%	-47.28%
ETERNAL	236.80	-2.44	-1.02%	461.01	1096.15	304.70	22.28%	146.30	61.86%	#VALUE!	#VALUE!

Disclaimer / Disclosures

ANALYST CERTIFICATION

I, Mrs. Vaishali Parekh B.com, Research Analyst, author and the name subscribed to this report, hereby certify that all of the views expressed in this research report accurately reflect our views about the subject issuer(s) or securities. We also certify that no part of our compensation was, is, or will be directly or indirectly related to the specific recommendation(s) or view(s) in this report.

Terms & conditions and other disclosures:

Prabhudas Lilladher Pvt. Ltd, Mumbai, India (hereinafter referred to as "PL") is engaged in the business of Stock Broking, Portfolio Manager, Depository Participant and distribution for third party financial products. PL is a subsidiary of Prabhudas Lilladher Advisory Services Pvt Ltd. which has its various subsidiaries engaged in business of commodity broking, investment banking, financial services (margin funding) and distribution of third party financial/other products, details in respect of which are available at www.plindia.com

This document has been prepared by the Research Division of PL and is meant for use by the recipient only as information and is not for circulation. This document is not to be reported or copied or made available to others without prior permission of PL. It should not be considered or taken as an offer to sell or a solicitation to buy or sell any security.

The information contained in this report has been obtained from sources that are considered to be reliable. However, PL has not independently verified the accuracy or completeness of the same. Neither PL nor any of its affiliates, its directors or its employees accepts any responsibility of whatsoever nature for the information, statements and opinion given, made available or expressed herein or for any omission therein.

Recipients of this report should be aware that past performance is not necessarily a guide to future performance and value of investments can go down as well. The suitability or otherwise of any investments will depend upon the recipient's particular circumstances and, in case of doubt, advice should be sought from an independent expert/advisor.

Either PL or its affiliates or its directors or its employees or its representatives or its clients or their relatives may have position(s), make market, act as principal or engage in transactions of securities of companies referred to in this report and they may have used the research material prior to publication.

PL may from time to time solicit or perform investment banking or other services for any company mentioned in this document.

PL is registered as Research Analyst under Securities and Exchange Board of India (Research Analysts) Regulations, 2014 PL submits that no material disciplinary action has been taken on us by any Regulatory Authority impacting Equity Research Analysis activities.

PL or its research analysts or its associates or his relatives do not have any financial interest in the subject company.

PL or its research analysts or its associates or his relatives do not have actual/beneficial ownership of one per cent or more securities of the subject company at the end of the month immediately preceding the date of publication of the research report.

PL or its research analysts or its associates or his relatives do not have any material conflict of interest at the time of publication of the research report.

PL or its associates might have received compensation from the subject company in the past twelve months.

PL or its associates might have managed or co-managed public offering of securities for the subject company in the past twelve months or mandated by the subject company for any other assignment in the past twelve months.

PL or its associates might have received any compensation for investment banking or merchant banking or brokerage services from the subject company in the past twelve months.

PL or its associates might have received any compensation for products or services other than investment banking or merchant banking or brokerage services from the subject company in the past twelve months PL or its associates might have received any compensation or other benefits from the subject company or third party in connection with the research report.

PL encourages independence in research report preparation and strives to minimize conflict in preparation of research report. PL or its analysts did not receive any compensation or other benefits from the subject Company or third party in connection with the preparation of the research report. PL or its Research Analysts do not have any material conflict of interest at the time of publication of this report.

It is confirmed that Mrs.Vaishali Parekh B.com, Research Analyst of this report has not received any compensation from the companies mentioned in the report in the preceding twelve months compensation of our Research Analysts is not based on any specific merchant banking, investment banking or brokerage service transactions.

The Research analysts for this report certifies that all of the views expressed in this report accurately reflect his or her personal views about the subject company or companies and its or their securities, and no part of his or her compensation was, is or will be, directly or indirectly related to specific recommendations or views expressed in this report.

The research analysts for this report has not served as an officer, director or employee of the subject company PL or its research analysts have not engaged in market making activity for the subject company

Our sales people, traders, and other professionals or affiliates may provide oral or written market commentary or trading strategies to our clients that reflect opinions that are contrary to the opinions expressed herein, and our proprietary trading and investing businesses may make investment decisions that are inconsistent with the recommendations expressed herein. In reviewing these materials, you should be aware that any or all of the foregoing, among other things, may give rise to real or potential conflicts of interest.

PL and its associates, their directors and employees may (a) from time to time, have a long or short position in, and buy or sell the securities of the subject company or (b) be engaged in any other transaction involving such securities and earn brokerage or other compensation or act as a market maker in the financial instruments of the subject company or act as an advisor or lender/borrower to the subject company or may have any other potential conflict of interests with respect to any recommendation and other related information and opinions.