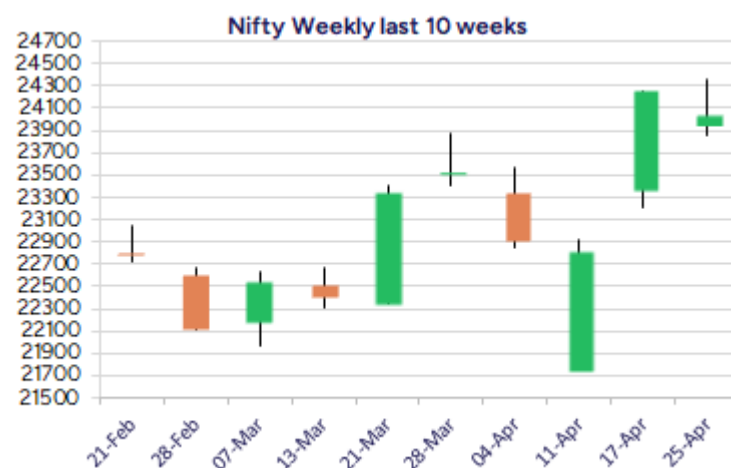
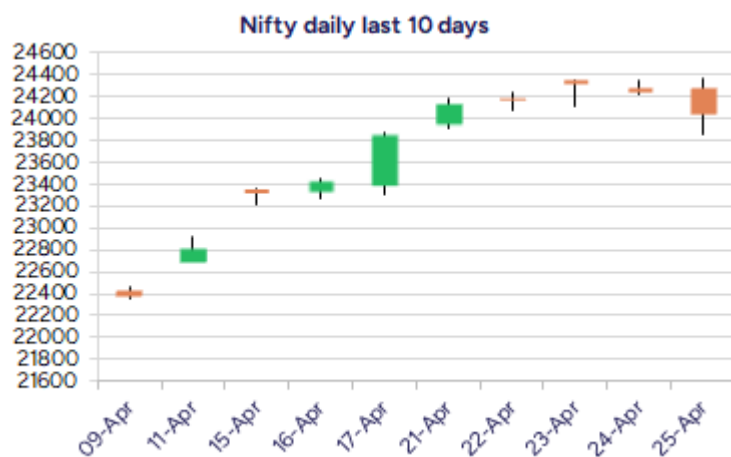


Date: 28th April 2025

* Sensex 79212.53 - 588.90

* Nifty 24039.35 - 207.35

* Bank Nifty 54664.05 - 537.35



*Blue candle → Close rate > Open rate * Red candle → Close rate < Open rate

Market Preview

Nifty resists near 24350 zone

Nifty cooled off after finding resistance near the 24350 zone with profit booking seen and has the important support near 23800 zone for the coming sessions. BankNifty witnessed some sell off having 53800 zone as the near-term support which needs to be sustained. The market breadth turned weak with the advance decline indicating a ratio of 1:4 at close.

Market Forecast

Nifty daily range 23800-24300

Nifty, after finding a tough resistance near the 24350 zone, witnessed profit booking with high fluctuations during the session to end near the important 200 period SMA at 24050 level with bias shaken to some extent but having the overall trend still maintained positive. As mentioned earlier, we maintain our stance, with the index having the near-term significant support positioned near the 23800 zone which if sustained, can regain with the positive move for further rise in the coming days.

BankNifty, after opening near the 55300 zone shed their gains with profit booking witnessed but recovered to some extent in the later half to close near the 54650 levels. The index would have the near-term support positioned near the 53800 level of the previous peak zone which needs to be sustained in the coming sessions. As mentioned earlier, once a revival is established, the index can anticipate for further rise with fresh upside targets achievable in the coming days.

The support for the day is seen at 23800 levels while the resistance is seen at 24300 levels. BankNifty would have the daily range of 54000-55300 levels.

Indices	Period	Closing	% Chng	Trend	Reversal	2 Sup	1 Sup	Pivot	1 Res	2 Res
Nifty	Daily	24039.35	-0.86%	-1	24227.00	23567	23803	24084	24321	24602
	Weekly	24039.35	0.79%	5	22874.25	23570	23805	24085	24319	24600
	Monthly	23519.35	0.05%	-6	25020.35	21213	22366	23118	24271	25022
Bank Nifty	Daily	54664.05	-0.97%	-1	55945.20	53556	54110	54730	55284	55904
	Weekly	54664.05	0.69%	5	51255.25	53066	53865	54981	55780	56896
	Monthly	51564.85	3.99%	-6	52195.95	46118	48841	50451	53175	54785
Sensex	Daily	79212.53	-0.74%	-1	79746.95	77791	78502	79316	80027	80841
	Weekly	79212.53	0.84%	6	76429.20	77736	78474	79345	80083	80954
	Monthly	77414.92	-0.11%	-6	82130.50	70156	73785	76263	79893	82371

Daily Trend turned Down

Scrip Name	LCP	Curr Trnd	Reversal
ABB	5499	8	5617.4
ADANIENT	2354.3	7	2441.6
ADANIPOWER	549.35	8	571.6
ASHOKA	190.47	7	197.1
AXISBANK	1166.3	7	1206.25
CASTROLIND	202.98	8	206.35
DLF	653.55	7	676.7
EMAMILTD	619.8	9	639.2
EXIDEIND	370.5	8	381.85
GMDC	309.1	8	324.9
GRANULES	452.55	8	474
IBREALEST	103.46	7	106.65

* Trends turned Down after a significant period

Daily Trend turned Down

Scrip Name	LCP	Curr Trnd	Reversal
INDIGO	5313.5	7	5507.7
INTELLECT	765.25	8	794.05
IRCTC	751.85	8	778
MARUTI	11698	10	11806
NBCC	95.49	10	99.65
NMDC	64.95	7	67.2
PEL	981.2	7	1019.55
PFCL	415.05	7	433.5
PRAJINDLTD	505.35	8	523.6
RBLBANK	188.09	8	194.55
SRF	2968.1	8	3024.4
SRTRANSFIN	655.2	8	696.35

* Trends turned Down after a significant period

Gainers - Losers (Nifty 500 Stocks)

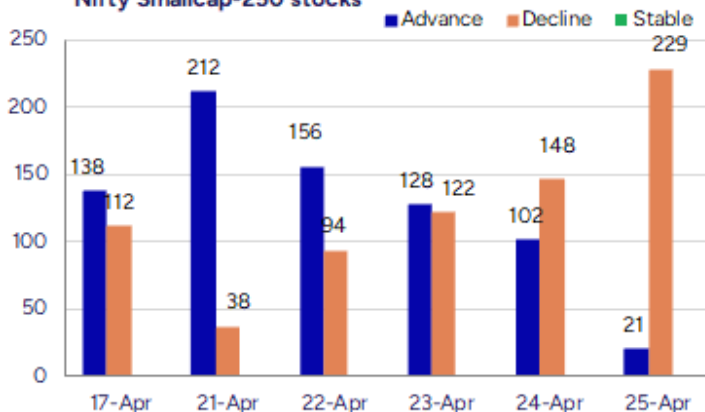
Gainers

Company Name	Last Price	% Gain	Volume
Lakshmi Finance	203.61	20	168113
Carraro India	386.55	16.64	1669216
Manaksia Steels	73.32	14.98	1020686
Butterfly	700.45	14.66	329341
Country Condos	10.84	9.94	2350777
Lotus Eye Care	74.17	8.63	1084877
Ganesh Infra	207.6	7.96	2348800

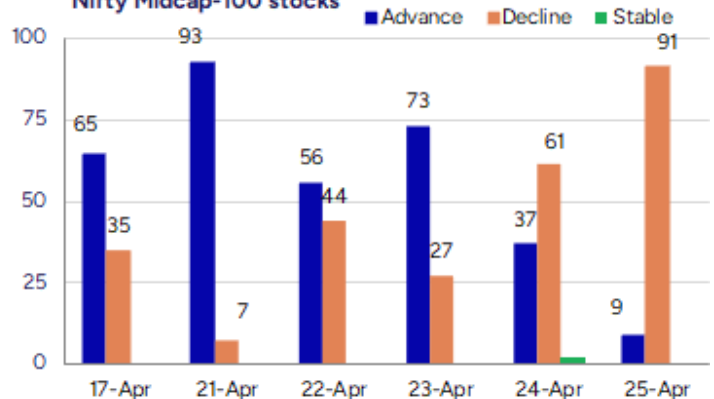
Losers

Company Name	Last Price	% Loss	Volume
Radiowalla Netw	74.7	-12.12	28800
Paramatrix Tech	90.85	-11.37	46800
SRM Contractors	321.35	-11.01	158827
Mindteck	208.55	-10.07	324814
PVP Ventures	25.67	-9.1	766699
AMD Industries	46.95	-8.98	42123
E Factor Experi	143.45	-8.63	47200

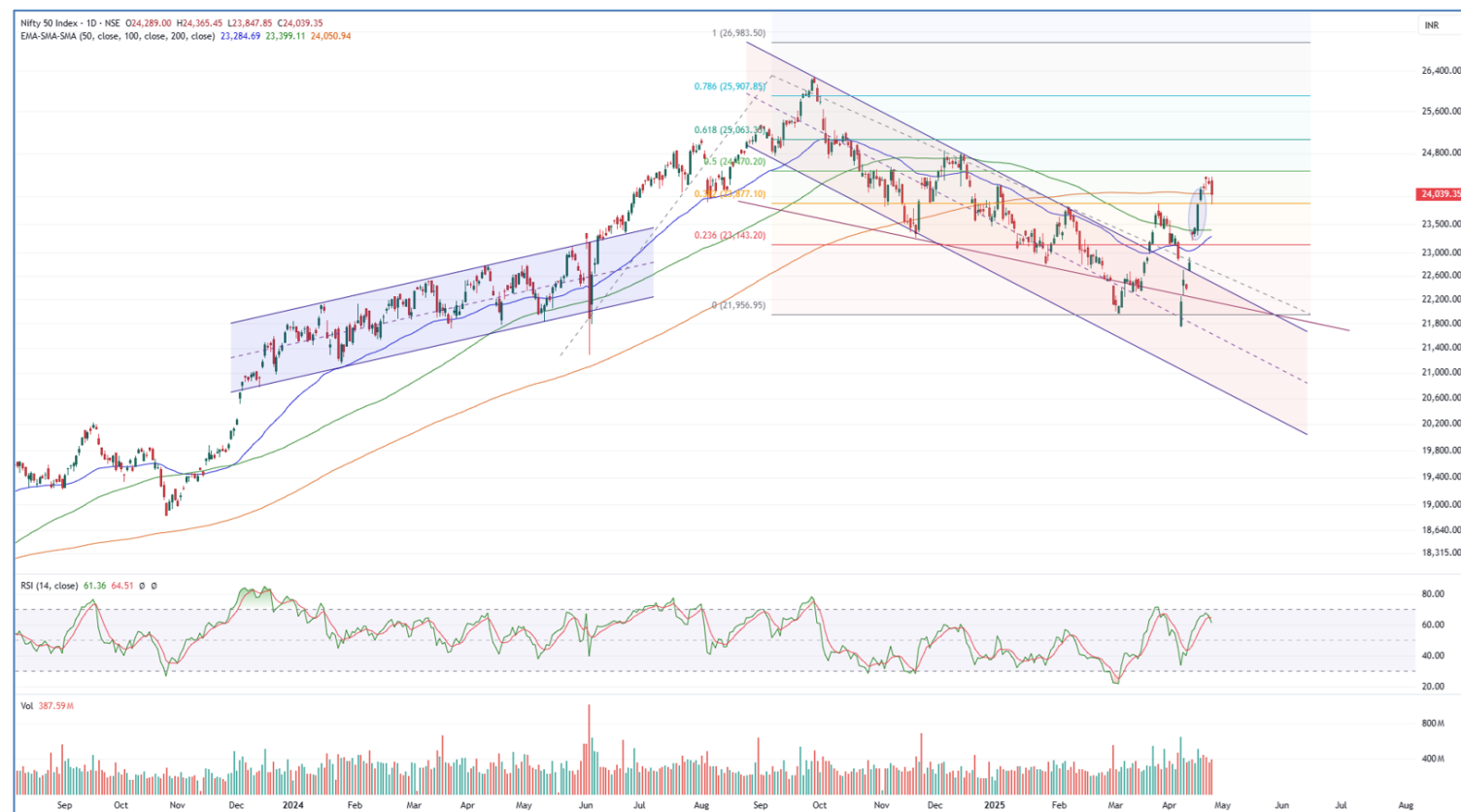
Nifty Smallcap-250 stocks



Nifty Midcap-100 stocks



Nifty Daily chart with RSI indicator



BankNifty Daily chart with RSI indicator



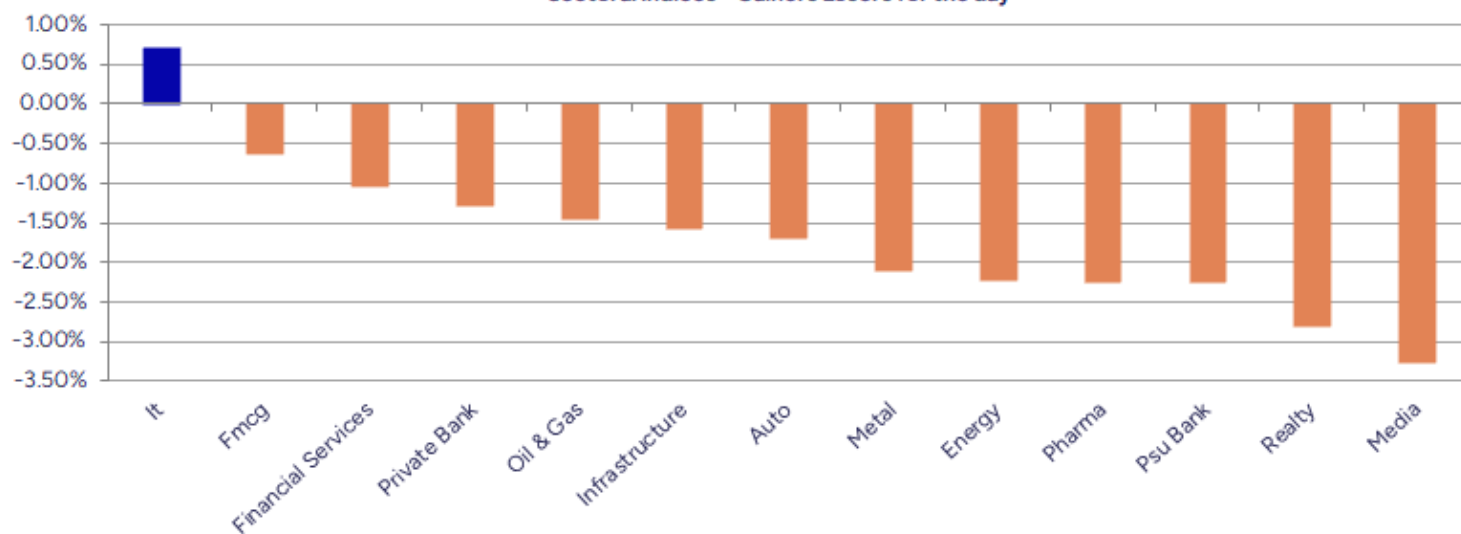
Breakouts - Cross above 200 DMA			
Company Name	LCP	Change %	200 DMA
Lotus Eye Care	74.17	8.07	68.63
Mirae NYSEFANG	116.54	2.99	113.16
NAVA	479.15	2.01	469.72
Archean Chem	656.7	1.68	645.88
MOS Utility	266.85	1.45	263.03
Nuvama Wealth	6268	1.34	6184.96
Mirae S&P 500	50.65	1.28	50.01
Akzo Nobel	3568.2	1.26	3523.69

Breakdown - Cross below 200 DMA			
Company Name	LCP	Change %	200 DMA
PVP Ventures	25.67	-8.52	28.06
Motilal Oswal	694.9	-7.26	749.32
Valiant Organic	329.65	-5.98	350.61
Garden Reach Sh	1616.8	-5.70	1714.54
Prudent Advisor	2316.6	-5.48	2450.85
Ajmera Realty	816.15	-4.56	855.11
PC Jeweller	12.89	-4.31	13.47
KDDL	2806.5	-4.06	2925.31
Goyal Salt	183.55	-3.92	191.04
Ambuja Cements	548.7	-3.86	570.72
Sahana Systems	1428.4	-3.68	1482.93
JK Bank	97.62	-3.63	101.3
Lagnum Spintex	116.08	-3.53	120.33
Torrent Power	1538.6	-3.50	1594.4
Kingfa Science	2964.9	-3.47	3071.4
Magadh Sugar	679.95	-3.46	704.3
Neuland Lab	12300	-3.33	12723.52
Tribhovandas	207.59	-3.33	214.74

* Stocks crossing above its Simple Moving Average (200DMA)

* Stocks crossing below its Simple Moving Average (200DMA)

Sectoral Indices - Gainers Losers for the day



Stocks witnessing a volume surge as compared to their 5 day average volume

Watch out for the stocks that have seen a huge spurt in its share price over the last three days

Volume Shockers - NSE					
Company name	LCP	% Chg	Volume	Avg Vol *	% Chg
Data Patterns	1878.7	11.7	106334	6353	6862116
Somi Conveyor	188.76	9.41	5503	5704	319407
BEW Engineering	177	5.11	1125	3011	35000
Transformers	566.8	4.08	131705	2988	4066593
C P S Shapers	617.4	5	2040	2753	58200
Oneclick Logi.	164.95	2.36	4320	2706	121200
Keynote Finance	451.5	2.98	8326	2569	222263
Atal	15.66	-0.06	100889	2533	2656506
Kaya	286.97	10.29	6240	2181	142317
Sundram	917.35	3.43	64845	1816	1242422
Jash Engineerin	632.1	5.9	26774	1626	461991
Nagreeka Cap	24.79	2.18	1969	1485	31217
Gensol Engineer	129.14	-2.65	294568	1439	4534631
Precot	449.85	19.75	3752	1213	49257
Anupam	752.05	7.05	77852	1210	1019751
Intellect Desig	751.8	13.81	334303	1196	4331554
HEG	474.6	4.77	80062	1164	1011773
Jindal Drilling	732.65	8.4	34855	1153	436778
Krishna Institu	630.55	2.24	59456	1088	706189
Trejhara	249.56	12.92	69297	1083	820102

* the Average Volume of last 5 days

Price Shockers - NSE				
Company name	LCP	Prv Close	% Chg	Volume
Country Condos	10.84	7.48	44.92	2350777
Manaksia Steels	73.32	60.18	21.83	1020686
Vardhman Steels	252.45	207.45	21.69	313099
SEL Mgf Company	42.14	35.09	20.09	18601
Aptech	157.53	131.27	20	891048
GSS Infotech	43.29	36.14	19.78	2999988
Carraro India	386.55	323.05	19.66	1669216
Mufin Green	79.8	67.18	18.79	0
Lakshmi Finance	203.61	172.76	17.86	168113
Repro India	549.3	471.4	16.53	1511349
E2E Networks	2197.5	1898.4	15.76	497290
Sri Adhikari	674.1	582.35	15.76	2547
BGR Energy	98.34	84.96	15.75	312325
Bhartiya Inter	596.1	515	15.75	5163
Cadsys India	90.65	78.35	15.7	10500
Infinium	300.95	260.15	15.68	9000
Sadbhav Engg	15.13	13.08	15.67	1495568
Mindteck	208.55	180.9	15.28	324814
Abhishek Integr	82.3	71.4	15.27	27000
Flexituff Ventu	37.91	32.95	15.05	27830

* the % price rise of the last 3 days

Nifty 50 stocks - Summary Details											
Symbol	LTP	Chng	% Chng	Volume (lacs)	Turnover (crs.)	52w High	Diff with 52w H	52w Low	Diff with 52w L	365 days % chng	30 days % chng
NIFTY 50	24039.35	-207.35	-0.86%	3877.15	33428.75	26277.35	8.52%	21281.45	12.96%	2.44%	8.23%
ADANIENT	2346.00	-96.50	-3.95%	14.14	334.05	3743.90	37.34%	2025.00	15.85%	5.26%	-19.75%
ADANIPTS	1189.50	-46.90	-3.79%	36.29	435.04	1621.40	26.64%	995.65	19.47%	4.56%	-6.37%
APOLLOHOSP	6932.00	-227.50	-3.18%	5.50	385.47	7545.35	8.13%	5693.20	21.76%	7.75%	13.94%
ASIANPAINT	2425.70	-38.70	-1.57%	7.02	170.83	3394.90	28.55%	2124.75	14.16%	5.73%	-14.07%
AXISBANK	1165.30	-41.80	-3.46%	172.44	2004.34	1339.65	13.01%	933.50	24.83%	7.92%	13.53%
BAJAJ-AUTO	8010.50	-191.00	-2.33%	5.08	409.61	12774.00	37.29%	7089.35	12.99%	2.44%	-5.70%
BAJAJFINSV	2045.00	-60.00	-2.85%	19.60	403.31	2135.00	4.22%	1419.05	44.11%	8.22%	29.11%
BAJFINANCE	9080.50	-220.50	-2.37%	10.89	993.44	9660.00	6.00%	6375.70	42.42%	2.58%	26.90%
BEL	297.00	-8.70	-2.85%	203.06	606.27	340.50	12.78%	221.00	34.39%	1.89%	29.26%
BHARTIARTL	1815.00	-30.60	-1.66%	45.70	833.01	1904.30	4.69%	1219.05	48.89%	6.65%	38.10%
CIPLA	1525.10	-26.60	-1.71%	13.54	207.26	1702.05	10.40%	1317.25	15.78%	2.68%	10.98%
COALINDIA	392.65	-7.20	-1.80%	73.36	289.31	543.55	27.76%	349.25	12.43%	0.39%	-9.91%
DRREDDY	1172.00	-28.50	-2.37%	12.87	151.63	1421.49	17.55%	1020.00	14.90%	1.92%	-79.83%
EICHERMOT	5560.00	-90.50	-1.60%	4.57	255.32	5906.50	5.87%	4253.85	30.71%	4.04%	24.72%
GRASIM	2732.10	2.90	0.11%	6.49	175.98	2877.75	5.06%	2171.60	25.81%	6.22%	16.74%
HCLTECH	1576.40	-10.30	-0.65%	38.00	601.95	2012.20	21.66%	1235.00	27.64%	-2.35%	7.26%
HDFCBANK	1908.00	-8.80	-0.46%	92.50	1768.09	1978.90	3.58%	1426.80	33.73%	5.23%	26.80%
HDFCLIFE	702.70	-5.70	-0.80%	37.15	263.67	761.20	7.69%	511.40	37.41%	5.24%	19.22%
HEROMOTOCO	3876.00	-78.50	-1.99%	6.53	254.67	6246.25	37.95%	3344.00	15.91%	9.00%	-9.99%
HINDALCO	620.15	-8.20	-1.31%	39.26	244.32	772.65	19.74%	546.45	13.49%	-9.39%	-1.22%
HINDUNILVR	2328.10	2.80	0.12%	28.60	662.03	3035.00	23.29%	2136.00	8.99%	2.38%	2.88%
ICICIBANK	1403.00	0.30	0.02%	117.05	1639.78	1436.00	2.30%	1051.05	33.49%	4.39%	27.90%
INDUSINDBK	820.00	0.25	0.03%	117.24	962.01	1550.00	47.10%	606.00	35.31%	28.68%	-44.41%
INFY	1480.00	8.60	0.58%	83.29	1236.41	2006.45	26.24%	1307.00	13.24%	-9.64%	2.84%
ITC	427.60	-2.45	-0.57%	229.44	977.41	528.50	19.09%	390.15	9.60%	4.94%	0.27%
JIOFIN	252.39	-6.39	-2.47%	333.42	847.07	391.50	35.53%	198.65	27.05%	13.73%	-32.23%
JSWSTEEL	1021.40	-23.10	-2.21%	27.84	286.53	1074.90	4.98%	823.80	23.99%	-1.62%	18.33%
KOTAKBANK	2196.60	-26.40	-1.19%	21.36	469.83	2301.90	4.57%	1543.85	42.28%	2.44%	20.63%
LT	3268.00	-32.60	-0.99%	20.05	656.08	3963.50	17.55%	2965.30	10.21%	-4.87%	-9.20%
M&M	2865.00	-36.40	-1.25%	22.99	660.52	3270.95	12.41%	2001.00	43.18%	6.05%	40.95%
MARUTI	11650.00	-244.00	-2.05%	9.06	1066.46	13680.00	14.84%	10725.00	8.62%	0.21%	-8.11%
NESTLEIND	2410.00	-23.20	-0.95%	11.28	271.60	2778.00	13.25%	2110.00	14.22%	7.91%	-2.68%
NTPC	355.50	-7.70	-2.12%	97.86	348.81	448.45	20.73%	292.80	21.41%	-1.02%	3.28%
ONGC	246.00	-3.37	-1.35%	156.16	384.92	345.00	28.70%	205.00	20.00%	2.94%	-10.73%
POWERGRID	305.30	-9.10	-2.89%	114.76	352.69	366.25	16.64%	247.30	23.45%	8.04%	8.26%
RELIANCE	1301.00	-0.60	-0.05%	144.28	1880.40	1608.80	19.13%	1114.85	16.70%	1.26%	-55.12%
SBILIFE	1691.00	82.80	5.15%	103.22	1750.19	1936.00	12.65%	1307.70	29.31%	3.28%	10.15%
SBIN	797.40	-16.00	-1.97%	131.31	1049.73	912.00	12.57%	680.00	17.26%	5.25%	5.21%
SHRIRAMFIN	640.00	-56.65	-8.13%	97.84	656.84	730.45	12.38%	438.60	45.92%	2.70%	-71.69%
SUNPHARMA	1781.80	-22.10	-1.23%	20.37	363.96	1960.35	9.11%	1377.20	29.38%	2.22%	21.41%
TATACONSUM	1149.00	-12.30	-1.06%	14.52	167.41	1250.10	8.09%	882.90	30.14%	19.64%	4.61%
TATAMOTORS	654.15	-14.20	-2.12%	132.06	869.98	1179.00	44.52%	535.75	22.10%	-5.91%	-32.60%
TATASTEEL	138.54	-2.98	-2.11%	377.61	528.50	184.60	24.95%	122.62	12.98%	-9.70%	-14.52%
TCS	3434.00	32.40	0.95%	27.43	944.10	4592.25	25.22%	3056.05	12.37%	-7.00%	-11.21%
TECHM	1460.00	14.80	1.02%	82.12	1183.37	1807.70	19.23%	1172.80	24.49%	-0.71%	21.89%
TITAN	3357.00	-25.60	-0.76%	7.04	236.99	3867.00	13.19%	2925.00	14.77%	10.77%	-6.29%
TRENT	5124.00	-199.50	-3.75%	10.30	533.46	8345.00	38.60%	4052.40	26.44%	2.67%	26.10%
ULTRACEMCO	12190.00	31.00	0.25%	4.13	501.34	12304.00	0.93%	9408.05	29.57%	6.46%	25.88%
WIPRO	240.50	-2.25	-0.93%	166.16	401.12	324.60	25.91%	208.50	15.35%	-10.42%	-47.22%
ETERNAL	227.71	-8.67	-3.67%	324.37	751.63	304.70	25.27%	146.30	55.65%	#VALUE!	#VALUE!

Disclaimer / Disclosures

ANALYST CERTIFICATION

I, Mrs. Vaishali Parekh B.com, Research Analyst, author and the name subscribed to this report, hereby certify that all of the views expressed in this research report accurately reflect our views about the subject issuer(s) or securities. We also certify that no part of our compensation was, is, or will be directly or indirectly related to the specific recommendation(s) or view(s) in this report.

Terms & conditions and other disclosures:

Prabhudas Lilladher Pvt. Ltd, Mumbai, India (hereinafter referred to as "PL") is engaged in the business of Stock Broking, Portfolio Manager, Depository Participant and distribution for third party financial products. PL is a subsidiary of Prabhudas Lilladher Advisory Services Pvt Ltd. which has its various subsidiaries engaged in business of commodity broking, investment banking, financial services (margin funding) and distribution of third party financial/other products, details in respect of which are available at www.plindia.com

This document has been prepared by the Research Division of PL and is meant for use by the recipient only as information and is not for circulation. This document is not to be reported or copied or made available to others without prior permission of PL. It should not be considered or taken as an offer to sell or a solicitation to buy or sell any security.

The information contained in this report has been obtained from sources that are considered to be reliable. However, PL has not independently verified the accuracy or completeness of the same. Neither PL nor any of its affiliates, its directors or its employees accepts any responsibility of whatsoever nature for the information, statements and opinion given, made available or expressed herein or for any omission therein.

Recipients of this report should be aware that past performance is not necessarily a guide to future performance and value of investments can go down as well. The suitability or otherwise of any investments will depend upon the recipient's particular circumstances and, in case of doubt, advice should be sought from an independent expert/advisor.

Either PL or its affiliates or its directors or its employees or its representatives or its clients or their relatives may have position(s), make market, act as principal or engage in transactions of securities of companies referred to in this report and they may have used the research material prior to publication.

PL may from time to time solicit or perform investment banking or other services for any company mentioned in this document.

PL is registered as Research Analyst under Securities and Exchange Board of India (Research Analysts) Regulations, 2014 PL submits that no material disciplinary action has been taken on us by any Regulatory Authority impacting Equity Research Analysis activities.

PL or its research analysts or its associates or his relatives do not have any financial interest in the subject company.

PL or its research analysts or its associates or his relatives do not have actual/beneficial ownership of one per cent or more securities of the subject company at the end of the month immediately preceding the date of publication of the research report.

PL or its research analysts or its associates or his relatives do not have any material conflict of interest at the time of publication of the research report.

PL or its associates might have received compensation from the subject company in the past twelve months.

PL or its associates might have managed or co-managed public offering of securities for the subject company in the past twelve months or mandated by the subject company for any other assignment in the past twelve months.

PL or its associates might have received any compensation for investment banking or merchant banking or brokerage services from the subject company in the past twelve months.

PL or its associates might have received any compensation for products or services other than investment banking or merchant banking or brokerage services from the subject company in the past twelve months PL or its associates might have received any compensation or other benefits from the subject company or third party in connection with the research report.

PL encourages independence in research report preparation and strives to minimize conflict in preparation of research report. PL or its analysts did not receive any compensation or other benefits from the subject Company or third party in connection with the preparation of the research report. PL or its Research Analysts do not have any material conflict of interest at the time of publication of this report.

It is confirmed that Mrs.Vaishali Parekh B.com, Research Analyst of this report has not received any compensation from the companies mentioned in the report in the preceding twelve months compensation of our Research Analysts is not based on any specific merchant banking, investment banking or brokerage service transactions.

The Research analysts for this report certifies that all of the views expressed in this report accurately reflect his or her personal views about the subject company or companies and its or their securities, and no part of his or her compensation was, is or will be, directly or indirectly related to specific recommendations or views expressed in this report.

The research analysts for this report has not served as an officer, director or employee of the subject company PL or its research analysts have not engaged in market making activity for the subject company

Our sales people, traders, and other professionals or affiliates may provide oral or written market commentary or trading strategies to our clients that reflect opinions that are contrary to the opinions expressed herein, and our proprietary trading and investing businesses may make investment decisions that are inconsistent with the recommendations expressed herein. In reviewing these materials, you should be aware that any or all of the foregoing, among other things, may give rise to real or potential conflicts of interest.

PL and its associates, their directors and employees may (a) from time to time, have a long or short position in, and buy or sell the securities of the subject company or (b) be engaged in any other transaction involving such securities and earn brokerage or other compensation or act as a market maker in the financial instruments of the subject company or act as an advisor or lender/borrower to the subject company or may have any other potential conflict of interests with respect to any recommendation and other related information and opinions.