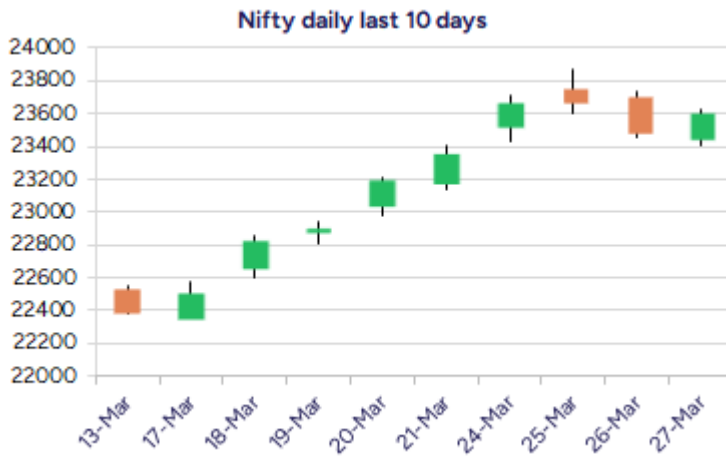


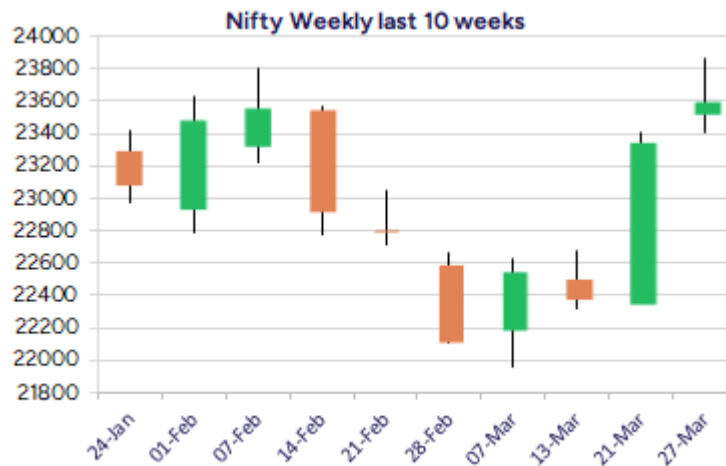
\* Sensex 77606.43 + 317.93

\* Nifty 23591.95 + 105.10

\* Bank Nifty 51575.85 +366.85



S



\*Blue candle → Close rate > Open rate \* Red candle → Close rate < Open rate

## Market Preview

### Nifty maintains the positive bias; witnesses revival

Nifty after taking support near the 23400 zone, witnessed a significant recovery to maintain the positive bias anticipating for further rise. BankNifty with strength indicated, has witnessed a decent pullback to restore the positive momentum anticipating for further rise. The market breadth was slightly on the positive side with the advance decline indicating a ratio of 4:3 at close.

## Market Forecast

### Nifty daily range 23450-23800

Nifty, with the overall bias maintained strong, after a short period of breather, has taken support near the 23400 zone and indicated a decent bounce back to close on a positive note near 23600 level to anticipate for further rise in the coming sessions. As mentioned earlier, the index would have the crucial and major support zone near 23000 zone with the 50EMA positioned near 23100 levels and can expect for higher targets of 23800 and 24200 levels in the coming days.

BankNifty, with strength indicated has taken support near the important 200 period MA at 51000 level and witnessed a significant pullback to once again anticipate to carry on with the positive upward move with targets of 52600 and 53800 levels expected in the coming sessions. As mentioned earlier, the zone near the significant 100 period MA at 50350 level would be the near-term important support which needs to be sustained as of now.

The support for the day is seen at 23450 levels while the resistance is seen at 23800 levels. BankNifty would have the daily range of 51200-52200 levels.

Indices	Period	Closing	% Chng	Trend	Reversal	2 Sup	1 Sup	Pivot	1 Res	2 Res
Nifty	Daily	23591.95	0.45%	16	23563.55	23329	23461	23544	23675	23758
	Weekly	23350.40	4.26%	1	22351.75	21986	22668	23035	23718	24085
	Monthly	23508.40	-0.58%	-5	26264.60	22068	22788	23507	24228	24947
Bank Nifty	Daily	51575.85	0.72%	9	51472.60	50784	51180	51447	51843	52111
	Weekly	50593.55	5.27%	1	48540.25	47345	48969	49821	51445	52297
	Monthly	49587.20	-2.50%	-5	52793.25	45873	47730	49701	51559	53530
Sensex	Daily	77606.43	0.41%	16	77568.40	76814	77210	77479	77875	78144
	Weekly	76905.51	4.17%	1	73919.90	72669	74787	75915	78033	79160
	Monthly	77500.57	-0.82%	-5	85764.50	72808	75154	77614	79960	82419

## Daily Trend turned Up

Scrip Name	LCP	Curr Trnd	Reversal
ADANIENT	2363.35	-2	2352.4
DCBBANK	114.5	-1	112.2
DMART	4065	-1	3960
EMAMILTD	577.3	-1	569.6
GLENMARK	1519.85	-2	1501.15
GSFC	181.77	-1	178.4
HAVELLS	1515.35	-4	1499.7
INDIGO	5127.8	-3	5066.4
MCDOWELLCOM	1408.1	-2	1374.4
PFCL	421	-1	414.55
TITAN	3087.65	-2	3084.6
VIPIND	286.15	-1	284.45

\* Trends turned Up after a significant period

## Daily Trend turned Down

Scrip Name	LCP	Curr Trnd	Reversal
AJANTPHARM	2629.55	15	2715.55
APOLLOHOSP	6492.05	8	6554.7
BHARATFORG	1159.15	8	1181.7
CEATLTD	2839.5	15	2853.1
ABREL	1879.35	7	1964.95
CUB	154.07	8	158.15
KAJARIACER	878.65	8	890.1
KANSAINER	232.59	7	239.3
KOTMAHBNK	2128.65	11	2141.65
RALLIS	219.21	7	223.3
STAR	655.2	7	689.5
TATAMOTORS	668.55	15	703.8

\* Trends turned Down after a significant period

## Gainers - Losers ( Nifty 500 Stocks )

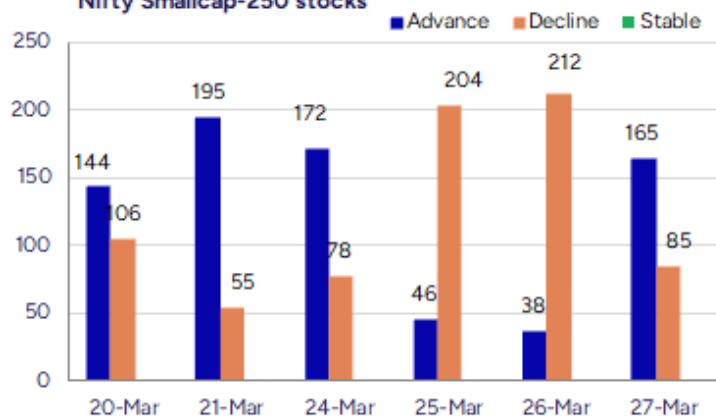
## Gainers

Scrip Name	LCP	% Change	Volume
MBL Infra	41.4	20	592761
Jindal Worldwid	66.3	19.98	7569752
Zenith Drugs	59.75	19.98	225600
Aurionpro Solut	1649.65	19.8	324708
BF Utilities	765.35	18.52	1354450
STC India	136.45	15.92	542510
Cyient DLM	445.95	15.08	1896446

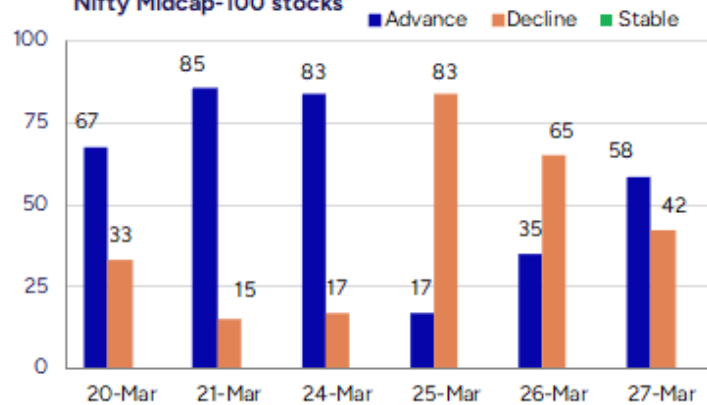
## Losers

Scrip Name	LCP	% Change	Volume
Capri Global	164.9	-15.38	120832094
Purv Flexipack	82.15	-14.87	194400
NDL Ventures	53.08	-13.24	527689
Electro Force	31.05	-11.91	280800
Reliable Data S	68.05	-10.6	48056
Micropro Soft	19.9	-10.36	132800
Sarthak Metals	99.1	-10.28	98295

## Nifty Smallcap-250 stocks



## Nifty Midcap-100 stocks



### Nifty Daily chart with RSI indicator



### BankNifty Daily chart with RSI indicator

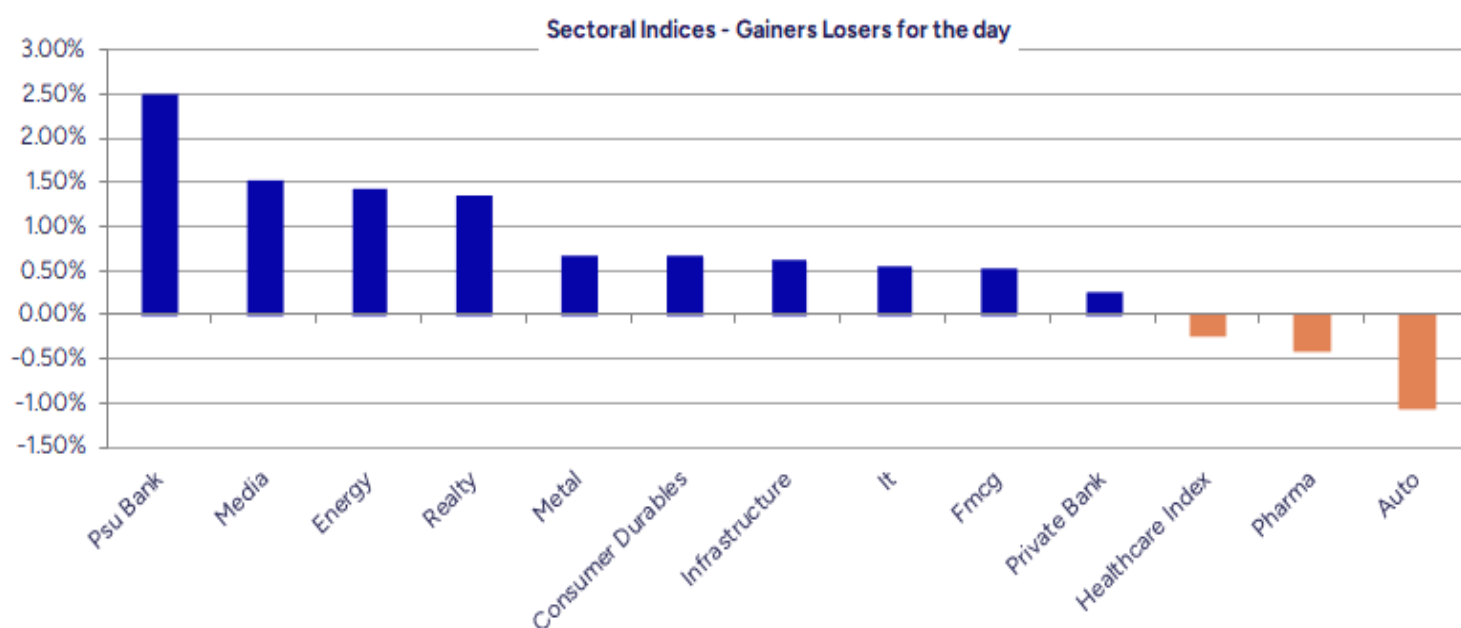


Breakouts - Cross above 200 DMA			
Company Name	LCP	Change %	200 DMA
Aegis Logistics	902.6	14.39	789.08
PC Jeweller	13.72	7.44	12.77
Akzo Nobel	3717.45	7.21	3467.43
Authum Invest	1651.55	6.76	1547.03
Pennar Inds	190.77	5.54	180.76
Thangamayil	2041.75	5.21	1940.59
Aurionpro Solut	1649.65	3.07	1600.49
Balu Forge Indu	647.35	2.68	630.45
Alivus Life	1061.65	2.68	1033.92
Federal Bank	197.58	2.66	192.46
Hitachi Energy	12947.95	2.61	12618.6
DCM Shriram	1103.85	2.43	1077.69
Panama Petro	391.55	2.26	382.88
Websol Energy	1137.2	2.14	1113.37
Ipca Labs	1470.05	2.12	1439.47
GMRP&UI	115.07	2.04	112.77
APL Apollo	1531.1	1.98	1501.32
Krsnaa	812.6	196.00%	797

\* Stocks crossing above its Simple Moving Average (200DMA)

Breakdown - Cross below 200 DMA			
Company Name	LCP	Change %	200 DMA
Shree Pushkar	258.45	-5.30	272.91
Procter&Gamble	5002.6	-4.87	5258.5
Gujarat Apollo	303.3	-4.32	316.98
Avonmore Cap	16.46	-3.18	17
McLeod	32.15	-2.99	33.14
PRITIKA	72.7	-2.81	74.8
Naga Dhunseri	3847.15	-2.62	3950.74
SKP Bearing	222.15	-2.51	227.86
LMW	15659.45	-2.16	16004.83
Mega Flex	45	-1.83	45.84
Lupin	2018.8	-1.50	2049.63
Holmarc Opto Me	137.9	-1.44	139.91
Sundaram Fin	4507.2	-1.29	4566.19
Sun Pharma	1731.45	-1.01	1749.07
eMudhra	853.05	-0.87	860.54
Super Spinning	10.99	-0.81	11.08
Nuvama Wealth	6071.9	-0.76	6118.69
Ramdevbaba Solv	112.7	-0.60	113.38

\* Stocks crossing below its Simple Moving Average (200DMA)



Stocks witnessing a volume surge as compared to their 5 day average volume

Watch out for the stocks that have seen a huge spurt in its share price over the last three days

Volume Shockers - NSE					
Company name	LCP	% Chg	Volume	Avg Vol *	% Chg
Capri Global	168.95	-13.3	111516864	1000204	11049
RHI Magnesita	509.35	9.5	15933753	192099	8195
JB Chemicals	1617.5	-5.34	11085510	176668	6175
HEG	485.3	-2.79	3968894	80062	4857
BEW Engineering	134.55	-4.68	41000	1125	3544
Galaxy Surfacta	2036.7	-3.31	398452	12237	3156
Jindal Worldwid	64.62	16.94	3902053	138074	2726
A B Infrabuild	102.22	3.15	351308	15200	2211
Maks Energy	27.25	-3.88	111000	5700	1847
Diamond Power	90.69	-2.73	130493	6800	1819
Newgen Software	1012.75	4.53	2119398	114472	1751
Precision	21.15	-4.73	382000	22000	1636
Guj Alkali	603.5	4.64	769157	44637	1623
Jai Balaji Ind	137.7	-0.45	929544	54390	1609
Crayons	45.9	0.44	462000	29200	1482
Vibhor Steel	155	-1.94	203275	14451	1307
Fonebox Retail	95	-1.14	73000	5200	1304
Sapphire Foods	299.85	3.34	921301	68650	1242
A2Z Infra Eng	14.21	-4.31	844756	65758	1185
R M Drip & Spri	442.05	2.33	119500	9800	1119

\* the Average Volume of last 5 days

Price Shockers - NSE				
Company name	LCP	3 days *	% Chg	Volume
Keynote Finance	314.45	249.48	26.04	49046
Aristo Bio-Tech	110.8	91	21.76	8000
Balaji Phosphat	98	81.15	20.76	174000
Creative New	790.3	663.6	19.09	356305
Lloyds Luxuries	93	78.65	18.25	62000
Chaman Metallic	171.65	146	17.57	52500
Magellanic	64.23	54.78	17.25	1514832
Tourism Finance	167.42	143.84	16.39	8136182
Websol Energy	1137.2	982.4	15.76	404578
ASL Industries	37	32	15.63	22000
Garware Technic	944.65	818.45	15.42	568967
Mold Tek Tech	144.65	125.48	15.28	573792
STC India	136.45	118.67	14.98	542510
Eleganz Interio	122.3	106.7	14.62	254000
Aegis Logistics	902.6	789.1	14.38	3667344
Mah Scooters	11724.4	10323.1	13.57	53927
Ramco System	351.1	310.85	12.95	102376
Pil Italica	13.92	12.34	12.8	696639
Jindal Worldwid	66.3	58.82	12.72	7587752
HEG	486	431.75	12.57	4623489

\* the % price rise of the last 3 days

Nifty 50 stocks - Summary Details											
Symbol	LTP	Chng	% Chng	Volume (lacs)	Turnover (crs.)	52w High	Diff with 52w H	52w Low	Diff with 52w L	365 days % chng	30 days % chng
NIFTY 50	23591.95	105.10	0.45%	5103.02	46481.56	26277.35	10.22%	21281.45	10.86%	4.14%	6.74%
ADANIANT	2363.00	50.40	2.18%	16.96	395.56	3743.90	36.88%	2025.00	16.69%	9.34%	-25.64%
ADANIPTS	1201.00	19.40	1.64%	20.04	238.30	1621.40	25.93%	995.65	20.62%	10.39%	-9.40%
APOLLOHOSP	6470.00	-49.80	-0.76%	7.29	473.65	7545.35	14.25%	5693.20	13.64%	4.29%	3.12%
ASIANPAINT	2340.00	16.85	0.73%	14.98	349.08	3394.90	31.07%	2124.75	10.13%	3.43%	-17.46%
AXISBANK	1098.00	1.75	0.16%	85.09	936.41	1339.65	18.04%	933.50	17.62%	8.53%	5.35%
BAJAJ-AUTO	7960.00	-17.10	-0.21%	6.52	520.01	12774.00	37.69%	7301.00	9.03%	-5.56%	-10.98%
BAJAJFINSV	1999.00	55.60	2.86%	45.07	897.97	2029.90	1.52%	1419.05	40.87%	4.61%	21.93%
BAJFINANCE	9004.70	138.65	1.56%	20.92	1879.19	9260.05	2.76%	6375.70	41.23%	6.12%	28.31%
BEL	301.80	2.26	0.75%	144.54	434.12	340.50	11.37%	195.95	54.02%	16.85%	50.22%
BHARTIARTL	1726.00	-12.55	-0.72%	62.22	1076.41	1779.00	2.98%	1183.10	45.89%	8.57%	43.31%
BPCL	279.00	5.99	2.19%	1075.25	2967.69	376.00	25.80%	234.01	19.23%	8.77%	-54.49%
BRITANNIA	4909.60	59.90	1.24%	67.50	3268.74	6469.90	24.12%	4506.00	8.96%	0.94%	-2.25%
CIPLA	1484.90	8.70	0.59%	18.48	273.34	1702.05	12.76%	1317.25	12.73%	-0.04%	0.27%
COALINDIA	396.70	1.90	0.48%	76.97	305.95	543.55	27.02%	349.25	13.59%	8.22%	-9.44%
DRREDDY	1161.40	-3.20	-0.27%	44.60	514.74	1421.49	18.30%	1092.45	6.31%	#VALUE!	-81.02%
EICHERMOT	5347.00	-56.30	-1.04%	6.03	322.98	5575.50	4.10%	3886.10	37.59%	7.83%	38.15%
GRASIM	2596.10	14.50	0.56%	12.46	325.75	2877.75	9.79%	2171.60	19.55%	7.85%	15.25%
HCLTECH	1637.25	3.85	0.24%	33.83	550.23	2012.20	18.63%	1235.00	32.57%	-0.65%	4.55%
HDFCBANK	1821.20	14.65	0.81%	208.29	3806.61	1880.00	3.13%	1421.25	28.14%	7.72%	26.74%
HDFCLIFE	682.00	13.60	2.03%	59.51	404.73	761.20	10.40%	511.40	33.36%	8.33%	6.62%
HEROMOTOCO	3760.00	114.05	3.13%	15.25	571.06	6246.25	39.80%	3461.60	8.62%	-6.15%	-21.95%
HINDALCO	691.55	0.25	0.04%	50.02	346.93	772.65	10.50%	545.00	26.89%	7.70%	23.74%
HINDUNILVR	2243.85	-2.10	-0.09%	37.53	842.58	3035.00	26.07%	2136.00	5.05%	0.20%	0.27%
ICICIBANK	1339.00	3.10	0.23%	151.10	2025.73	1373.00	2.48%	1048.10	27.75%	9.65%	23.27%
INDUSINDBK	673.50	18.20	2.78%	215.89	1427.78	1576.35	57.27%	606.00	11.14%	-36.33%	-56.85%
INFY	1605.00	5.55	0.35%	94.27	1509.58	2006.45	20.01%	1358.35	18.16%	-9.33%	7.16%
ITC	409.35	2.00	0.49%	186.42	763.11	528.50	22.54%	391.20	4.64%	1.36%	-4.75%
JSWSTEEL	1060.95	4.50	0.43%	25.14	266.82	1074.90	1.30%	815.40	30.11%	9.27%	28.54%
KOTAKBANK	2135.45	-9.45	-0.44%	94.21	2008.46	2202.50	3.04%	1543.85	38.32%	9.09%	22.31%
LT	3510.05	65.25	1.89%	34.68	1215.82	3963.50	11.44%	3141.00	11.75%	5.74%	-6.14%
M&M	2734.00	-8.25	-0.30%	43.26	1179.63	3270.95	16.42%	1855.30	47.36%	1.22%	47.12%
MARUTI	11700.00	-34.30	-0.29%	6.46	758.07	13680.00	14.47%	10725.00	9.09%	-4.95%	-4.21%
NESTLEIND	2245.00	1.55	0.07%	8.66	194.67	2778.00	19.19%	2110.00	6.40%	1.04%	-13.25%
NTPC	364.00	9.35	2.64%	379.31	1363.03	448.45	18.83%	292.80	24.32%	10.79%	7.76%
ONGC	242.65	2.93	1.22%	99.36	239.84	345.00	29.67%	215.48	12.61%	2.29%	-9.71%
POWERGRID	292.30	1.45	0.50%	372.03	1096.94	366.25	20.19%	247.30	18.20%	12.23%	7.70%
RELIANCE	1280.00	6.95	0.55%	150.28	1921.94	1608.80	20.44%	1156.00	10.73%	4.82%	-55.85%
SBILIFE	1550.00	8.70	0.56%	14.06	216.91	1936.00	19.94%	1307.70	18.53%	3.69%	3.69%
SBIN	772.05	8.05	1.05%	156.49	1205.84	912.00	15.35%	680.00	13.54%	6.64%	3.24%
SHRIRAMFIN	682.60	10.60	1.58%	46.28	313.61	730.45	6.55%	438.60	55.63%	16.42%	-71.68%
SUNPHARMA	1734.35	-24.60	-1.40%	32.80	567.00	1960.35	11.53%	1377.20	25.93%	7.29%	10.07%
TATACONSUM	977.45	17.80	1.85%	25.85	251.10	1250.10	21.81%	882.90	10.71%	-4.26%	-13.74%
TATAMOTORS	669.50	-38.75	-5.47%	342.39	2291.73	1179.00	43.21%	606.30	10.42%	5.99%	-28.18%
TATASTEEL	155.36	-0.45	-0.29%	259.09	402.78	184.60	15.84%	122.62	26.70%	13.19%	2.24%
TCS	3645.00	9.20	0.25%	25.28	922.64	4592.25	20.63%	3457.00	5.44%	-1.08%	-6.23%
TECHM	1427.45	11.15	0.79%	25.41	360.98	1807.70	21.04%	1162.95	22.74%	-12.23%	12.91%
TITAN	3091.40	33.90	1.11%	16.35	503.56	3867.00	20.06%	2985.05	3.56%	-3.64%	-17.32%
TRENT	5415.00	93.05	1.75%	16.70	901.99	8345.00	35.11%	3843.00	40.91%	5.05%	37.10%
ULTRACEMCO	11580.00	177.90	1.56%	4.06	468.62	12145.35	4.65%	9250.00	25.19%	3.26%	18.76%
WIPRO	272.00	4.60	1.72%	147.84	401.34	324.60	16.20%	208.50	30.46%	-9.37%	-44.27%

## Disclaimer / Disclosures

### ANALYST CERTIFICATION

I, Mrs. Vaishali Parekh B.com, Research Analyst, author and the name subscribed to this report, hereby certify that all of the views expressed in this research report accurately reflect our views about the subject issuer(s) or securities. We also certify that no part of our compensation was, is, or will be directly or indirectly related to the specific recommendation(s) or view(s) in this report.

Terms & conditions and other disclosures:

Prabhudas Lilladher Pvt. Ltd, Mumbai, India (hereinafter referred to as "PL") is engaged in the business of Stock Broking, Portfolio Manager, Depository Participant and distribution for third party financial products. PL is a subsidiary of Prabhudas Lilladher Advisory Services Pvt Ltd. which has its various subsidiaries engaged in business of commodity broking, investment banking, financial services (margin funding) and distribution of third party financial/other products, details in respect of which are available at [www.plindia.com](http://www.plindia.com)

This document has been prepared by the Research Division of PL and is meant for use by the recipient only as information and is not for circulation. This document is not to be reported or copied or made available to others without prior permission of PL. It should not be considered or taken as an offer to sell or a solicitation to buy or sell any security.

The information contained in this report has been obtained from sources that are considered to be reliable. However, PL has not independently verified the accuracy or completeness of the same. Neither PL nor any of its affiliates, its directors or its employees accepts any responsibility of whatsoever nature for the information, statements and opinion given, made available or expressed herein or for any omission therein.

Recipients of this report should be aware that past performance is not necessarily a guide to future performance and value of investments can go down as well. The suitability or otherwise of any investments will depend upon the recipient's particular circumstances and, in case of doubt, advice should be sought from an independent expert/advisor.

Either PL or its affiliates or its directors or its employees or its representatives or its clients or their relatives may have position(s), make market, act as principal or engage in transactions of securities of companies referred to in this report and they may have used the research material prior to publication.

PL may from time to time solicit or perform investment banking or other services for any company mentioned in this document.

PL is registered as Research Analyst under Securities and Exchange Board of India (Research Analysts) Regulations, 2014 PL submits that no material disciplinary action has been taken on us by any Regulatory Authority impacting Equity Research Analysis activities.

PL or its research analysts or its associates or his relatives do not have any financial interest in the subject company.

PL or its research analysts or its associates or his relatives do not have actual/beneficial ownership of one per cent or more securities of the subject company at the end of the month immediately preceding the date of publication of the research report.

PL or its research analysts or its associates or his relatives do not have any material conflict of interest at the time of publication of the research report.

PL or its associates might have received compensation from the subject company in the past twelve months.

PL or its associates might have managed or co-managed public offering of securities for the subject company in the past twelve months or mandated by the subject company for any other assignment in the past twelve months.

PL or its associates might have received any compensation for investment banking or merchant banking or brokerage services from the subject company in the past twelve months.

PL or its associates might have received any compensation for products or services other than investment banking or merchant banking or brokerage services from the subject company in the past twelve months PL or its associates might have received any compensation or other benefits from the subject company or third party in connection with the research report.

PL encourages independence in research report preparation and strives to minimize conflict in preparation of research report. PL or its analysts did not receive any compensation or other benefits from the subject Company or third party in connection with the preparation of the research report. PL or its Research Analysts do not have any material conflict of interest at the time of publication of this report.

It is confirmed that Mrs.Vaishali Parekh B.com, Research Analyst of this report has not received any compensation from the companies mentioned in the report in the preceding twelve months compensation of our Research Analysts is not based on any specific merchant banking, investment banking or brokerage service transactions.

The Research analysts for this report certifies that all of the views expressed in this report accurately reflect his or her personal views about the subject company or companies and its or their securities, and no part of his or her compensation was, is or will be, directly or indirectly related to specific recommendations or views expressed in this report.

The research analysts for this report has not served as an officer, director or employee of the subject company PL or its research analysts have not engaged in market making activity for the subject company

Our sales people, traders, and other professionals or affiliates may provide oral or written market commentary or trading strategies to our clients that reflect opinions that are contrary to the opinions expressed herein, and our proprietary trading and investing businesses may make investment decisions that are inconsistent with the recommendations expressed herein. In reviewing these materials, you should be aware that any or all of the foregoing, among other things, may give rise to real or potential conflicts of interest.

PL and its associates, their directors and employees may (a) from time to time, have a long or short position in, and buy or sell the securities of the subject company or (b) be engaged in any other transaction involving such securities and earn brokerage or other compensation or act as a market maker in the financial instruments of the subject company or act as an advisor or lender/borrower to the subject company or may have any other potential conflict of interests with respect to any recommendation and other related information and opinions.