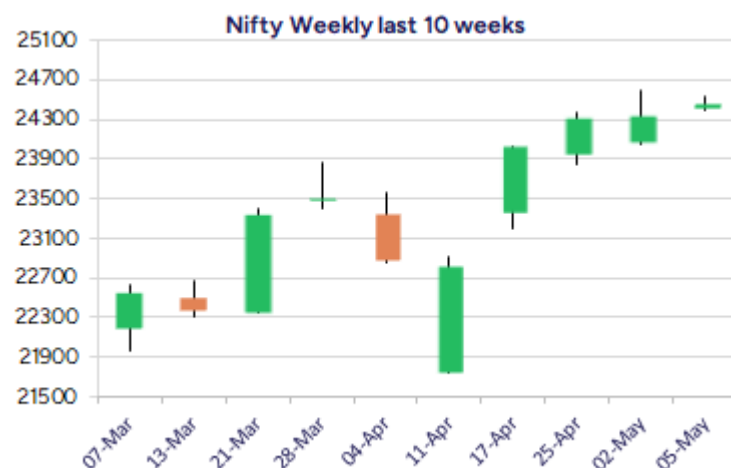
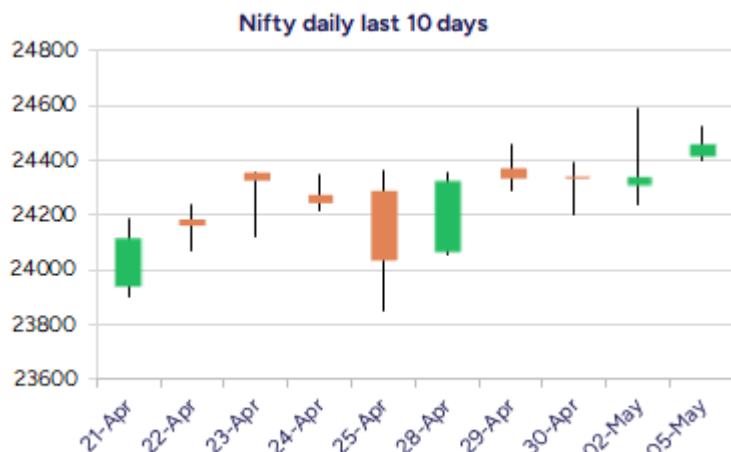


Date: 06th May 2025

* Sensex 80796.84 + 294.85

* Nifty 24461.15 + 114.45

* Bank Nifty 54919.50 - 195.85



*Blue candle → Close rate > Open rate * Red candle → Close rate < Open rate

Market Preview

Nifty ends strong above the 24400 zone

Nifty ended up above the hurdle zone of 24400 level to improve the bias and can anticipate for further rise in the coming sessions. BankNifty has been gripped in a rangebound zone, more or less indicating a flag pattern on the daily chart, closed near the 54900 zone with sluggish move witnessed. The market breadth was strong with the advance decline indicating a positive of 3:1 at close.

Market Forecast

Nifty daily range 24300-24700

Nifty, maintaining the positive bias intact has witnessed a gradual rise in the last two sessions and closing above the hurdle of 24400 zone has improved the bias further with overall sentiment maintained with a cautiously positive approach as of now. The index would be aiming for the near-term target of 24800 zone which if decisively breached above, can achieve for the next upside target of 25200 level with currently the important 200 period MA at 24050 level positioned as the crucial support zone which needs to be sustained to maintain the overall trend positive.

BankNifty, after the recent strong run up, has been found sluggish in the last few sessions and has been gripped between the tight range of 56000 and 54500 levels which needs to be breached decisively on either of the side for fresh directional move. The index would need a decisive breach above 56000 zone to confirm a breakout and can expect for another fresh round of momentum with targets of 57200 and 58500 levels visible in the coming days provided the 54500 zone is sustained as of now.

The support for the day is seen at 24300 levels while the resistance is seen at 24700 levels. BankNifty would have the daily range of 54500-55500 levels.

Indices	Period	Closing	% Chng	Trend	Reversal	2 Sup	1 Sup	Pivot	1 Res	2 Res
Nifty	Daily	24461.15	0.47%	2	24393.95	24337	24399	24463	24525	24588
	Weekly	24346.70	1.28%	7	23626.75	23808	24077	24333	24602	24858
	Monthly	24334.20	3.46%	-7	24274.15	20798	22566	23512	25279	26225
Bank Nifty	Daily	54919.50	-0.36%	-6	55549.45	54458	54689	55017	55248	55576
	Weekly	55115.35	0.83%	7	53634.90	53867	54491	55223	55847	56578
	Monthly	55087.15	6.83%	1	53311.35	46522	50805	53451	57733	60379
Sensex	Daily	80796.84	0.37%	2	80536.60	80443	80620	80835	81011	81226
	Weekly	80501.99	1.63%	7	77826.00	78508	79505	80341	81338	82174
	Monthly	80242.24	3.65%	-7	80009.00	68245	74243	77449	83447	86653

Daily Trend turned up			
Scrip Name	LCP	Curr Trnd	Reversal
AARTIIND	450.4	-4	434.25
ADANIENT	2455.5	-5	2361.1
BIOCON	335.9	-6	320.25
CASTROLIND	203.96	-3	202.6
CESC	164.97	-6	158.85
CHOLAFIN	1551.5	-8	1517.55
GUJGASLTD	469.45	-2	466.6
HAL	4590.8	-2	4499.1
HDFCBANK	1936.8	-6	1926.25
HINDPETRO	409.85	-7	392
HUDCO	228.79	-6	228.6
IEX	195.14	-3	194.15

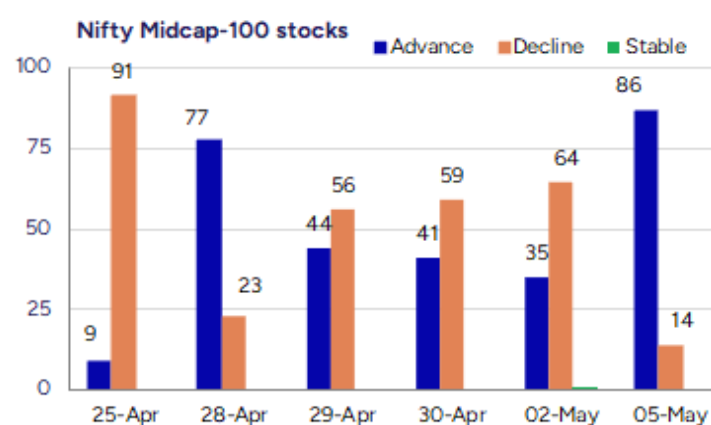
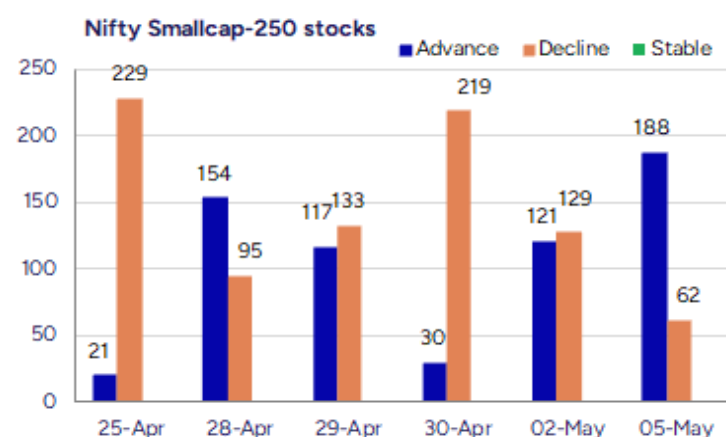
* Trends turned Up after a significant period

Daily Trend turned up			
Scrip Name	LCP	Curr Trnd	Reversal
INDIGO	5531.5	-5	5422.75
INTELLECT	815.3	-5	794
ITC	436.95	-6	429.75
JSWENERGY	481.2	-6	475.4
CUMMINS	2940.2	-5	2905.6
MOTHERSUMI	138.91	-2	135.6
NCC	221.16	-6	217.45
POLYCAB	5795	-2	5572
RALLIS	242.09	-5	240.8
TRENT	5370.5	-2	5253
VIPIND	322.55	-2	313.05
VOLTAS	1240.3	-2	1227.3

* Trends turned Up after a significant period

Gainers - Losers (Nifty 500 Stocks)

Gainers				Losers			
Company Name	Last Price	% Gain	Volume	Company Name	Last Price	% Loss	Volume
Lloyds Luxuries	100	17.65	150000	G-Tec Jainx	20.98	-8.94	92157
Fidel Softech	164	16.73	112000	V R Infraspace	220.5	-8.13	1200
Universal Cable	501.9	16.61	626774	Lotus Eye Care	75.09	-7.85	208707
Ashima	34.32	16.54	3370258	Aatmaj Health	19	-7.32	2000
De Neers Tools	305.65	14.88	12000	V-Mart Retail	3165.9	-6.79	302702
R R Kabel	1175.8	14.85	8198361	Precision Metal	21.45	-6.54	42000
Parag Milk Food	208.1	14.33	12079834	Silver Touch Te	693.85	-6.08	21651



Nifty Daily chart with RSI indicator



BankNifty Daily chart with RSI indicator



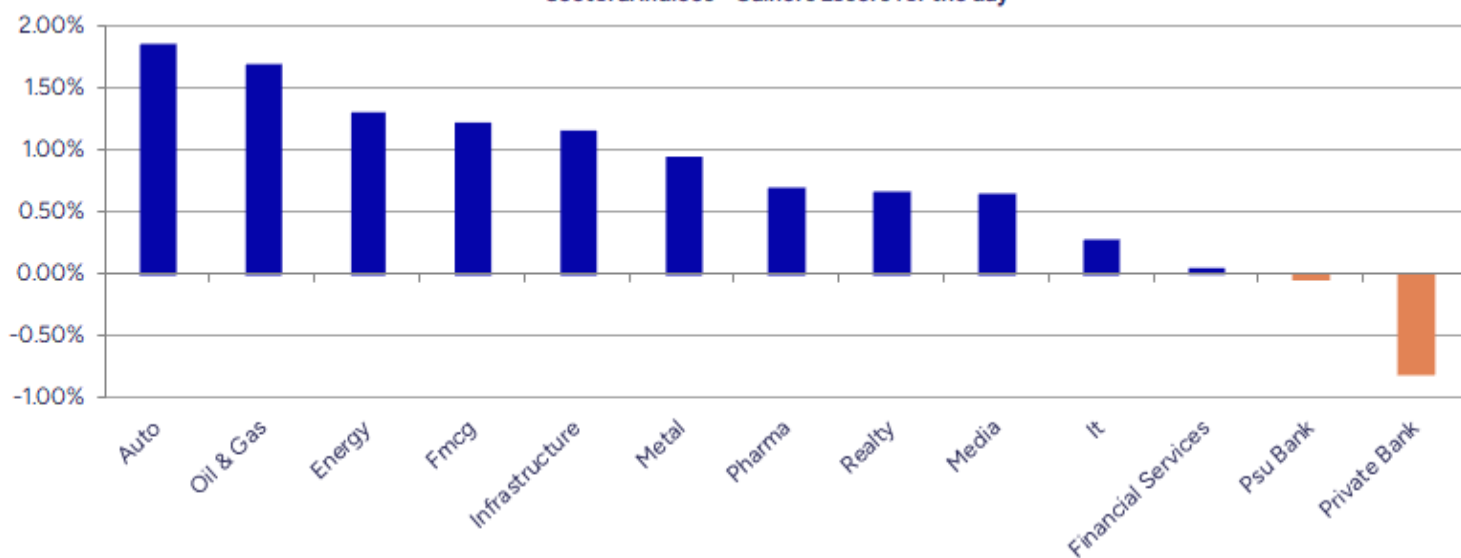
Breakouts - Cross above 200 DMA			
Company Name	LCP	Change %	200 DMA
Parag Milk Food	208.1	11.70	186.3
Ashima	34.32	8.57	31.61
Somi Conveyor	186.77	5.35	177.28
Goldiam Inter	377.4	5.08	359.14
Lloyds Luxuries	100	4.98	95.26
Adani Ports	1347.1	4.58	1288.13
Shakti Pumps	887.85	3.63	856.76
Beta Drugs	1770	3.22	1714.77
Chaman Lal Seti	315.3	2.84	306.6
Jyoti CNC Auto	1165	2.65	1134.91
Krystal Integra	668.3	2.36	652.91
Shriram Finance	628.85	2.24	615.06
Veekayem Fashio	249.95	2.01	245.02
IOC	148.56	1.68	146.1
HEALTHADD	142.95	1.51	140.83
Naga Dhunseri	4143	1.47	4083.01
Gulshan Poly	197.38	1.41	194.64
Apollo Tyres	487.8	130.00%	481.55

* Stocks crossing above its Simple Moving Average (200DMA)

Breakdown - Cross below 200 DMA			
Company Name	LCP	Change %	200 DMA
Womancart	287.15	-4.20	299.75
Maitreya Medica	286.45	-4.05	298.53
Silver Touch Te	693.85	-1.99	707.94
Prakash Ind	168.84	-1.40	171.24
Kamat Hotels	230.65	-1.15	233.33
PTC India	175.76	-0.91	177.37
Wonder Elect.	154.51	-0.88	155.88
JSW Steel	955.5	-0.78	963
Atul	6906.5	-0.74	6957.97
Raj Rayon Ind	22.72	-0.74	22.89
SBI	790	-0.64	795.12
Yaari Digital	13.01	-0.61	13.09
South West Pinn	123.8	-0.49	124.41
Jupiter Life	1450.1	-0.35	1455.15
Next Mediaworks	7.48	-0.13	7.49
LIQUIDSBI	999.99	0.00	1000

* Stocks crossing below its Simple Moving Average (200DMA)

Sectoral Indices - Gainers Losers for the day



Stocks witnessing a volume surge as compared to their 5 day average volume

Watch out for the stocks that have seen a huge spurt in its share price over the last three days

Volume Shockers - NSE					
Company name	LCP	% Chg	Volume	Avg Vol *	% Chg
Diamond Power	88.78	-5.7	772342	6800	11257
R R Kabel	1175.8	14.85	8198361	110125	7345
G-Tec Jainx	20.98	-8.94	92157	2151	4184
United Polyfab	18.32	-4.23	623259	14703	4139
A B Infrabuild	101.67	8.41	625776	15200	4017
Oneclick Logi.	164	-3.47	168000	4320	3789
Sky Gold	302.65	-0.08	1010242	25989	3787
Netweb	1604.4	12.85	5332809	163390	3164
JBM Auto	692.35	7.47	5397408	180877	2884
Adani Green Ene	965.7	6.68	13651088	480592	2740
UTKARSHBNK	24.06	-2.98	28842105	1045115	2660
Zodiac Clothing	106.98	-1.08	420862	15634	2592
Parag Milk Food	208.1	14.33	12079834	458401	2535
V-Mart Retail	3165.9	-6.79	302702	11748	2477
Ashima	34.32	16.54	3370258	131890	2455
Laxmi Goldorna	519.15	-0.13	26154	1094	2291
Paras Defence	1375.6	2.06	1546579	74764	1969
Go Fashion	895.9	4.73	997804	49266	1925
Sportking India	107.4	-2.9	1641274	88613	1752
BEW Engineering	188.7	-4.04	19000	1125	1589

* the Average Volume of last 5 days

Price Shockers - NSE				
Company name	LCP	Prv Close	% Chg	Volume
Krystal Integra	668.3	527.85	26.61	1040576
Jullundur Motor	103.08	83.3	23.75	898158
Lloyds Luxuries	100	82.9	20.63	150000
Zodiac Clothing	106.98	90.13	18.7	420862
Sportking India	107.4	92.18	16.51	1641274
Parag Milk Food	208.1	179.89	15.68	12079834
A B Infrabuild	101.67	88.96	14.29	625776
Force Motors	10184	8914	14.25	303782
Go Fashion	895.9	785.9	14	997804
Ashima	34.32	30.47	12.64	3370258
Universal Cable	501.9	446.3	12.46	626774
Voltamp Trans	8194.5	7301.5	12.23	258618
Iris Clothings	52.54	46.87	12.1	438352
Urja Global	14.83	13.24	12.01	2748845
Oriental Trimex	12.71	11.4	11.49	2494376
JagsonpalPharma	249.91	224.96	11.09	291985
Adani Total Gas	665.55	600.2	10.89	16749169
Adani Ports	1347.1	1216.5	10.74	14189485
Gravita India	1935.6	1752.5	10.45	1930915
Swan Defence	121.27	110	10.25	540

* the % price rise of the last 3 days

Nifty 50 stocks - Summary Details											
Symbol	LTP	Chng	% Chng	Volume (lacs)	Turnover (crs.)	52w High	Diff with 52w H	52w Low	Diff with 52w L	365 days % chng	30 days % chng
NIFTY 50	24461.15	114.45	0.47%	2914.66	26917.40	26277.35	6.91%	21281.45	14.94%	6.30%	8.32%
ADANIEN	2465.00	170.80	7.44%	42.27	1030.26	3743.90	34.16%	2025.00	21.73%	-1.73%	-23.35%
ADANIPTS	1346.50	79.40	6.27%	141.91	1902.69	1621.40	16.95%	995.65	35.24%	10.34%	-4.03%
APOLLOHOSP	6970.00	15.50	0.22%	2.59	181.13	7545.35	7.63%	5693.20	22.43%	3.57%	15.72%
ASIANPAINT	2441.00	31.20	1.29%	12.30	301.76	3394.90	28.10%	2124.75	14.88%	2.28%	-17.75%
AXISBANK	1174.10	-8.10	-0.69%	72.36	849.16	1339.65	12.36%	933.50	25.77%	8.33%	3.57%
BAJAJ-AUTO	7905.00	68.50	0.87%	2.50	197.78	12774.00	38.12%	7089.35	11.51%	1.97%	-13.94%
BAJAJFINSV	2029.00	71.00	3.63%	20.73	416.51	2135.00	4.96%	1419.05	42.98%	2.39%	20.32%
BAJFINANCE	8940.00	77.50	0.87%	8.93	798.35	9660.00	7.45%	6375.70	40.22%	1.65%	27.86%
BEL	315.65	4.30	1.38%	109.55	345.27	340.50	7.30%	221.00	42.83%	11.20%	33.00%
BHARTIARTL	1866.00	14.10	0.76%	35.49	661.65	1904.30	2.01%	1219.05	53.07%	6.22%	44.97%
CIPLA	1542.70	17.10	1.12%	7.87	121.18	1702.05	9.36%	1317.25	17.12%	7.80%	7.08%
COALINDIA	385.45	1.05	0.27%	63.95	246.61	543.55	29.09%	349.25	10.37%	-0.17%	-19.01%
DRREDDY	1178.00	-4.90	-0.41%	18.94	221.28	1421.49	17.13%	1020.00	15.49%	6.57%	-81.37%
EICHERMOT	5473.00	35.50	0.65%	3.20	174.67	5906.50	7.34%	4253.85	28.66%	3.61%	18.23%
GRASIM	2748.80	30.50	1.12%	6.62	182.46	2877.75	4.48%	2171.60	26.58%	3.87%	9.55%
HCLTECH	1569.00	-7.50	-0.48%	10.12	159.68	2012.20	22.03%	1235.00	27.04%	10.86%	16.95%
HDFCBANK	1935.80	10.80	0.56%	75.34	1462.17	1978.90	2.18%	1426.80	35.67%	5.93%	26.68%
HDFCLIFE	738.00	10.25	1.41%	27.62	203.95	761.20	3.05%	511.40	44.31%	5.62%	28.60%
HEROMOTOCO	3785.00	44.50	1.19%	6.40	241.24	6246.25	39.40%	3344.00	13.19%	2.22%	-17.84%
HINDALCO	634.35	2.25	0.36%	25.52	162.03	772.65	17.90%	546.45	16.09%	5.36%	-2.32%
HINDUNILVR	2346.50	22.60	0.97%	20.74	486.56	3035.00	22.69%	2136.00	9.85%	3.54%	4.82%
ICICIBANK	1427.40	-5.00	-0.35%	45.65	653.81	1446.80	1.34%	1051.05	35.81%	7.27%	25.42%
INDUSINDBK	848.15	-4.85	-0.57%	78.76	667.57	1550.00	45.28%	606.00	39.96%	25.07%	-42.51%
INFY	1507.00	0.20	0.01%	42.82	646.63	2006.45	24.89%	1307.00	15.30%	3.80%	6.39%
ITC	437.50	7.25	1.69%	115.25	502.62	528.50	17.22%	390.15	12.14%	5.02%	-1.42%
JIOFIN	260.45	1.65	0.64%	109.86	286.26	385.85	32.50%	198.65	31.11%	16.41%	-31.15%
JSWSTEEL	955.20	-18.00	-1.85%	16.46	158.45	1074.90	11.14%	823.80	15.95%	-3.24%	11.32%
KOTAKBANK	2085.00	-100.20	-4.59%	88.22	1838.52	2301.90	9.42%	1543.85	35.05%	2.50%	41.28%
LT	3332.00	2.20	0.07%	19.47	647.35	3963.50	15.93%	2965.30	12.37%	2.14%	-4.86%
M&M	3024.00	97.80	3.34%	40.49	1212.96	3270.95	7.55%	2160.00	40.00%	12.70%	33.43%
MARUTI	12449.00	43.00	0.35%	2.70	335.84	13680.00	9.00%	10725.00	16.07%	8.05%	-0.69%
NESTLEIND	2333.50	-4.20	-0.18%	9.14	213.76	2778.00	16.00%	2110.00	10.59%	3.34%	-4.82%
NTPC	348.50	0.05	0.01%	94.93	330.86	448.45	22.29%	292.80	19.02%	-0.56%	-4.52%
ONGC	239.88	-3.54	-1.45%	200.86	479.61	345.00	30.47%	205.00	17.01%	7.70%	-14.92%
POWERGRID	309.00	5.05	1.66%	43.43	134.05	366.25	15.63%	247.30	24.95%	3.42%	-2.22%
RELIANCE	1430.00	7.60	0.53%	126.86	1816.57	1608.80	11.11%	1114.85	28.27%	18.07%	-50.40%
SBILIFE	1770.00	5.30	0.30%	9.48	168.29	1936.00	8.57%	1307.70	35.35%	16.67%	22.27%
SBIN	790.60	-9.40	-1.18%	239.86	1894.09	912.00	13.31%	680.00	16.26%	4.24%	-3.78%
SHRIRAMFIN	629.80	25.60	4.24%	86.17	537.06	730.45	13.78%	438.60	43.59%	-7.56%	-76.66%
SUNPHARMA	1834.20	4.80	0.26%	12.20	223.88	1960.35	6.44%	1377.20	33.18%	7.02%	21.06%
TATACONSUM	1163.40	6.60	0.57%	13.60	158.22	1250.10	6.94%	882.90	31.77%	6.34%	5.71%
TATAMOTORS	662.20	10.20	1.56%	88.68	586.13	1179.00	43.83%	535.75	23.60%	6.21%	-35.66%
TATASTEEL	142.10	0.92	0.65%	172.13	244.55	184.60	23.02%	122.62	15.89%	0.56%	-15.21%
TCS	3454.60	9.90	0.29%	12.84	445.23	4592.25	24.77%	3056.05	13.04%	4.40%	-10.37%
TECHM	1495.00	-1.30	-0.09%	8.46	126.75	1807.70	17.30%	1193.65	25.25%	13.27%	19.66%
TITAN	3315.00	-26.00	-0.78%	5.65	189.35	3867.00	14.27%	2925.00	13.33%	8.61%	-5.46%
TRENT	5380.00	232.00	4.51%	13.10	698.15	8345.00	35.53%	4196.00	28.22%	-7.46%	13.80%
ULTRACEMCO	11664.00	20.00	0.17%	1.46	170.33	12339.00	5.47%	9408.05	23.98%	1.26%	18.62%
WIPRO	243.20	0.33	0.14%	121.70	297.43	324.60	25.08%	208.50	16.64%	-1.39%	-46.90%
ETERNAL	240.10	5.81	2.48%	379.47	906.67	304.70	21.20%	146.30	64.11%	#VALUE!	#VALUE!

Disclaimer / Disclosures

ANALYST CERTIFICATION

I, Mrs. Vaishali Parekh B.com, Research Analyst, author and the name subscribed to this report, hereby certify that all of the views expressed in this research report accurately reflect our views about the subject issuer(s) or securities. We also certify that no part of our compensation was, is, or will be directly or indirectly related to the specific recommendation(s) or view(s) in this report.

Terms & conditions and other disclosures:

Prabhudas Lilladher Pvt. Ltd, Mumbai, India (hereinafter referred to as "PL") is engaged in the business of Stock Broking, Portfolio Manager, Depository Participant and distribution of third party financial products. PL is a subsidiary of Prabhudas Lilladher Advisory Services Pvt Ltd. which has its various subsidiaries engaged in business of commodity broking, investment banking, financial services (margin funding) and distribution of third party financial/other products, details in respect of which are available at www.plindia.com

This document has been prepared by the Research Division of PL and is meant for use by the recipient only as information and is not for circulation. This document is not to be reported or copied or made available to others without prior permission of PL. It should not be considered or taken as an offer to sell or a solicitation to buy or sell any security.

The information contained in this report has been obtained from sources that are considered to be reliable. However, PL has not independently verified the accuracy or completeness of the same. Neither PL nor any of its affiliates, its directors or its employees accepts any responsibility of whatsoever nature for the information, statements and opinion given, made available or expressed herein or for any omission therein.

Recipients of this report should be aware that past performance is not necessarily a guide to future performance and value of investments can go down as well. The suitability or otherwise of any investments will depend upon the recipient's particular circumstances and, in case of doubt, advice should be sought from an independent expert/advisor.

Either PL or its affiliates or its directors or its employees or its representatives or its clients or their relatives may have position(s), make market, act as principal or engage in transactions of securities of companies referred to in this report and they may have used the research material prior to publication.

PL may from time to time solicit or perform investment banking or other services for any company mentioned in this document.

PL is registered as Research Analyst under Securities and Exchange Board of India (Research Analysts) Regulations, 2014 PL submits that no material disciplinary action has been taken on us by any Regulatory Authority impacting Equity Research Analysis activities.

PL or its research analysts or its associates or his relatives do not have any financial interest in the subject company.

PL or its research analysts or its associates or his relatives do not have actual/beneficial ownership of one per cent or more securities of the subject company at the end of the month immediately preceding the date of publication of the research report.

PL or its research analysts or its associates or his relatives do not have any material conflict of interest at the time of publication of the research report.

PL or its associates might have received compensation from the subject company in the past twelve months.

PL or its associates might have managed or co-managed public offering of securities for the subject company in the past twelve months or mandated by the subject company for any other assignment in the past twelve months.

PL or its associates might have received any compensation for investment banking or merchant banking or brokerage services from the subject company in the past twelve months.

PL or its associates might have received any compensation for products or services other than investment banking or merchant banking or brokerage services from the subject company in the past twelve months PL or its associates might have received any compensation or other benefits from the subject company or third party in connection with the research report.

PL encourages independence in research report preparation and strives to minimize conflict in preparation of research report. PL or its analysts did not receive any compensation or other benefits from the subject Company or third party in connection with the preparation of the research report. PL or its Research Analysts do not have any material conflict of interest at the time of publication of this report.

It is confirmed that Mrs. Vaishali Parekh B.com, Research Analyst of this report has not received any compensation from the companies mentioned in the report in the preceding twelve months compensation of our Research Analysts is not based on any specific merchant banking, investment banking or brokerage service transactions.

The Research analysts for this report certifies that all of the views expressed in this report accurately reflect his or her personal views about the subject company or companies and its or their securities, and no part of his or her compensation was, is or will be, directly or indirectly related to specific recommendations or views expressed in this report.

The research analysts for this report has not served as an officer, director or employee of the subject company PL or its research analysts have not engaged in market making activity for the subject company

Our sales people, traders, and other professionals or affiliates may provide oral or written market commentary or trading strategies to our clients that reflect opinions that are contrary to the opinions expressed herein, and our proprietary trading and investing businesses may make investment decisions that are inconsistent with the recommendations expressed herein. In reviewing these materials, you should be aware that any or all of the foregoing, among other things, may give rise to real or potential conflicts of interest.

PL and its associates, their directors and employees may (a) from time to time, have a long or short position in, and buy or sell the securities of the subject company or (b) be engaged in any other transaction involving such securities and earn brokerage or other compensation or act as a market maker in the financial instruments of the subject company or act as an advisor or lender/borrower to the subject company or may have any other potential conflict of interests with respect to any recommendation and other related information and opinions.

Regd. Office: 3rd Floor, Sadhana House, 570, P. B. Marg, Behind Mahindra Tower, Worli, Mumbai - 400 018, India.