

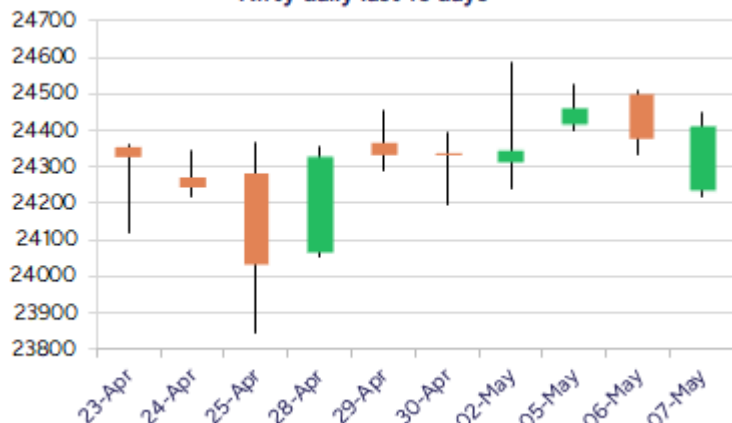
Date: 08th May 2025

* Sensex 80746.78 + 105.71

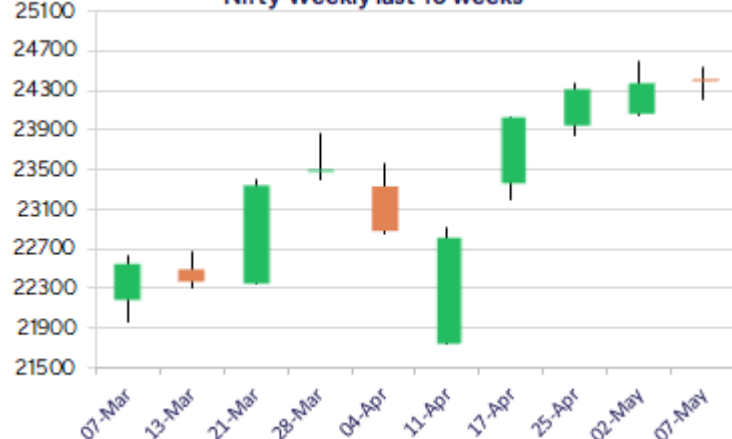
* Nifty 24414.40 + 34.80

* Bank Nifty 54610.90 + 339.50

Nifty daily last 10 days



Nifty Weekly last 10 weeks



*Blue candle → Close rate > Open rate * Red candle → Close rate < Open rate

Market Preview

Nifty witnesses resilience amid tense scenario

Nifty witnessed a decent recovery after the weak opening and amid high fluctuations closed in the green near 24400 zone. BankNifty witnessed high volatile session during the intraday session, with a decent bounce back at the fag end of the session, to end on a positive note above 54600 level. The market breadth was overall maintained strong with the advance decline indicating a ratio of 2:1 at close.

Market Forecast

Nifty daily range 24200-24600

Nifty, after opening on the lower side near 24220 zone recovered significantly and with high volatility witnessed during the intraday session ended marginally on the positive side, amid the border tensions looming around. The index is precariously placed maintaining the support near 24300 zone and sentiment turning into a very cautious approach, the index would have the crucial and important support zone near the 200 period MA at 24050 levels which needs to be sustained. BankNifty, with high fluctuations witnessed, recovered during the last hours of the trading session to close near the 54600 zone awaiting the FED outcome, once again maintaining above the important support zone of 54500 level. On the upside, as mentioned earlier, the index would need a decisive breach above 56000 zone to confirm a breakout and thereafter, expect for fresh round of momentum in the coming days. The support for the day is seen at 24200 levels while the resistance is seen at 24600 levels. BankNifty would have the daily range of 54000-55200 levels.

Indices	Period	Closing	% Chng	Trend	Reversal	2 Sup	1 Sup	Pivot	1 Res	2 Res
Nifty	Daily	24414.40	0.14%	1	24424.50	24132	24273	24361	24503	24591
	Weekly	24346.70	1.28%	7	23626.75	23808	24077	24333	24602	24858
	Monthly	24334.20	3.46%	-7	24274.15	20798	22566	23512	25279	26225
Bank Nifty	Daily	54610.90	0.63%	-8	55436.90	53648	54130	54401	54883	55154
	Weekly	55115.35	0.83%	7	53634.90	53867	54491	55223	55847	56578
	Monthly	55087.15	6.83%	1	53311.35	46522	50805	53451	57733	60379
Sensex	Daily	80746.78	0.13%	4	80690.10	79602	80175	80510	81082	81417
	Weekly	80501.99	1.63%	7	77826.00	78508	79505	80341	81338	82174
	Monthly	80242.24	3.65%	-7	80009.00	68245	74243	77449	83447	86653

Daily Trend turned Up			
Scrip Name	LCP	Curr Trnd	Reversal
AARTIIND	458.45	-1	439.55
ARVIND	375.65	-6	374.75
BAJFINANCE	8986.5	-7	8934.4
BATAIN	1212.7	-8	1206.35
BSE	6652.5	-4	6646.05
EMAMILTD	634.75	-7	631.5
GNFC	492.75	-7	488.65
GSFC	190.32	-7	189.05
ICIL	318.7	-7	300.5
INTELLECT	814.05	-1	801.1
KEC	724.9	-7	702.3
LALPATHLAB	2852.3	-6	2827.75

* Trends turned Up after a significant period

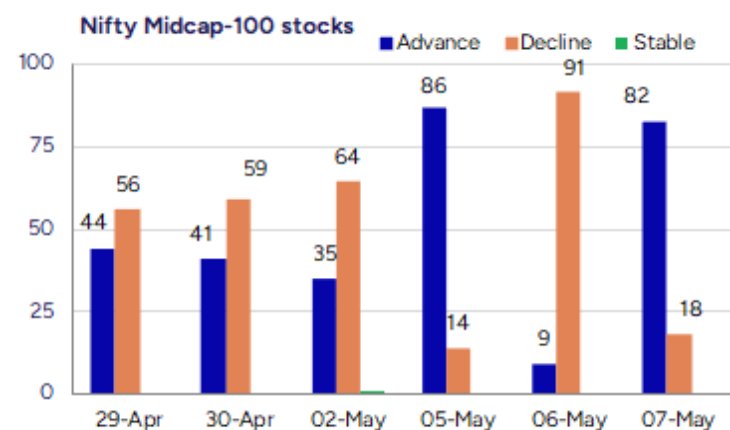
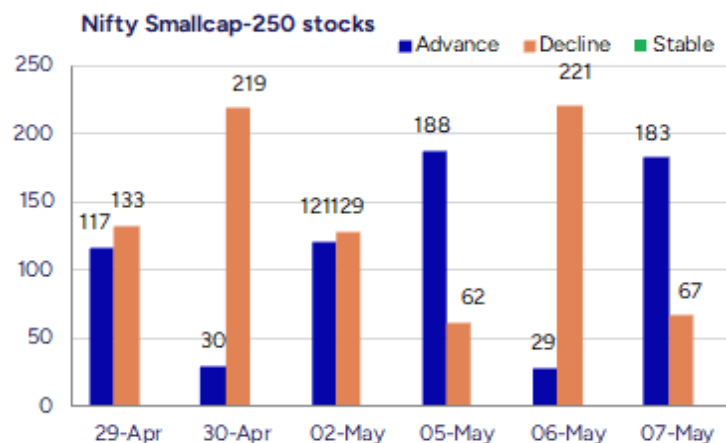
Daily Trend turned Up			
Scrip Name	LCP	Curr Trnd	Reversal
MARICO	736.35	-1	720.3
MOTHERSUMI	142.46	-1	136.6
NAM-INDIA	654.45	-7	645.5
PEL	1034.6	-1	981.8
POWERGRID	311.1	-8	307.75
RAYMOND	1574.4	-1	1541.8
SRF	3055.7	-7	2992.2
TATAMOTORS	680.3	-1	657.3
TVSMOTOR	2792.3	-7	2768.85
UBL	2181.8	-8	2157.75
UPL	688	-1	678.95
WABAG	1313	-8	1302.25

* Trends turned Up after a significant period

Gainers - Losers (Nifty 500 Stocks)

Gainers			
Company Name	Last Price	% Gain	Volume
Aarti Drugs	419.85	19.99	8151720
Bharat Seats	90.39	19.99	321201
Gajanand Intl	14.75	19.92	30000
S P Apparels	843.75	15.84	665514
Agarwal Toughen	138.65	14.68	639600
Aeron Composite	142.5	12.56	67000
Welspun Living	134.98	12.03	110614220

Losers			
Company Name	Last Price	% Loss	Volume
Sharp Chucks	87.85	-13.79	44000
Oriental Trimex	11.48	-11.08	2676167
JagsonpalPharma	219.82	-8.63	390484
JagsonpalPharma	219.82	-8.63	390484
Essen Specialit	445.6	-8.29	108000
WOL 3D India	135.55	-7.79	9000
KHFM HOSPITALIT	80.2	-7.55	24800



Nifty Daily chart with RSI indicator



BankNifty Daily chart with RSI indicator

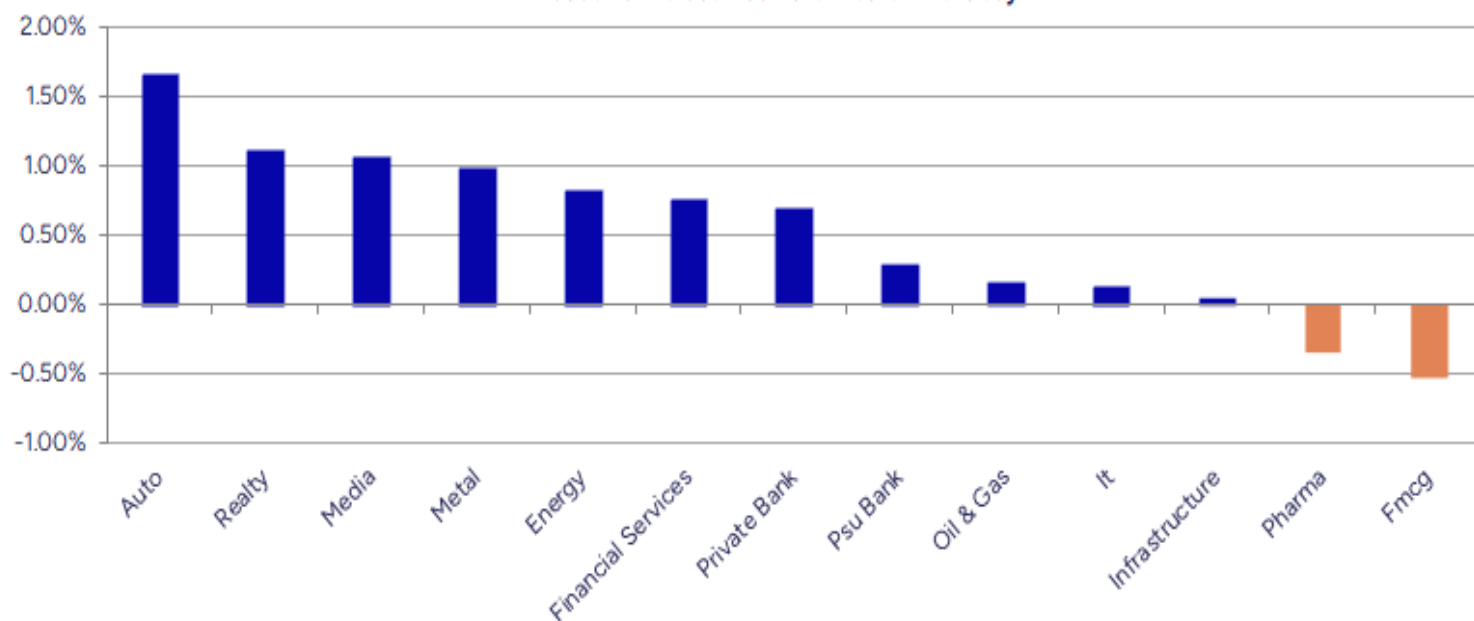


Breakouts - Cross above 200 DMA				Breakdown - Cross below 200 DMA			
Company Name	LCP	Change %	200 DMA	Company Name	LCP	Change %	200 DMA
Aimtron Electro	531.15	7.05	496.15	Nila Spaces	12.17	-3.11	12.56
Sangam India	423.4	6.38	398.01	Goldiam Inter	352.05	-2.48	361.01
Suven Life Sci	137.59	4.46	131.72	Lloyds Luxuries	93	-2.24	95.13
Sah Polymers	90.29	4.12	86.72	Adani Trans	871.6	-2.09	890.19
Shakti Pumps	890.05	3.68	858.46	ESFL	445.6	-1.74	453.47
KFin Tech	1103.3	3.19	1069.15	Wonder Elect.	154.66	-1.00	156.22
Siyaram Silk	679.35	2.45	663.11	Orient Electric	236.06	-0.76	237.86
AB Capital	200.75	2.41	196.03	Axis NiftyHeal	141.41	-0.73	142.45
Jullundur Motor	98.68	2.41	96.36	Webso Energy	1195.3	-0.42	1200.3
Balaji Telefilm	69.23	2.34	67.65	Nestle	2338.4	-0.41	2347.97
Vaidya Sane	136	1.82	133.57	Sarda Energy	433.3	-0.34	434.8
LMW	16213	1.77	15931.8				
Reliance Power	39.11	1.74	38.44				
Medico Remedies	53.64	1.53	52.83				
Gokaldas Export	951.7	1.50	937.66				
Lemon Tree Hote	135.68	1.44	133.75				
Wanbury	240.61	1.33	237.46				
Arvind	375.65	132.00%	370.77				

* Stocks crossing above its Simple Moving Average (200DMA)

* Stocks crossing below its Simple Moving Average (200DMA)

Sectoral Indices - Gainers Losers for the day



Stocks witnessing a volume surge as compared to their 5 day average volume

Watch out for the stocks that have seen a huge spurt in its share price over the last three days

Volume Shockers - NSE					
Company name	LCP	% Chg	Volume	Avg Vol *	% Chg
CCL Products	772.6	11.25	12968369	122716	10468
Gokaldas Export	951.7	11.76	5055186	121685	4054
S P Apparels	843.75	15.84	665514	20065	3217
Oneclick Logi.	162.8	0.12	130800	4320	2928
Kajaria Ceramic	829.2	3.7	2376826	84513	2712
KPR Mill	1101.2	8.06	4668516	178619	2514
Industrial Inv	175.91	1.17	889698	38458	2213
Diamond Power	90.47	-2.88	154029	6800	2165
Paras Defence	1368.6	1.09	1688106	74764	2158
Sky Gold	302.75	1.37	508818	25989	1858
Sportking India	112.54	5.97	1690966	88613	1808
Jash Engineerin	565.35	2.04	447339	26774	1571
Krishana Phosch	301.05	0.15	393082	25704	1429
Shakti Pumps	890.05	3.74	527059	38631	1264
R R Kabel	1231.3	1.47	1378285	110125	1152
Sapphire Foods	310.75	-1.3	856996	68650	1148
KEI Industries	3295.3	3.17	1765133	145420	1114
Jupiter Life	1432.4	-0.42	134912	11977	1026
G-Tec Jainx	21.1	4.98	24063	2151	1019
BSE Limited	6652.5	6.53	10869601	984644	1004

* the Average Volume of last 5 days

Price Shockers - NSE				
Company name	LCP	Prv Close	% Chg	Volume
CCL Products	772.6	600.1	28.75	12968369
Bharat Seats	90.39	74.64	21.1	321201
Kriti Ind	117.2	97.39	20.34	100524
Aarti Drugs	419.85	349.85	20.01	8151720
Swan Defence	133.69	115.5	15.75	258
S P Apparels	843.75	735.5	14.72	665514
Poly Medicure	2835.2	2495.9	13.59	852414
Suven Life Sci	137.59	122.69	12.14	1002047
Ashima	32.89	29.45	11.68	362525
Dharmaj Crop	226.76	204.35	10.97	188769
Krystal Integra	684.65	617.75	10.83	156558
Indo Rama Synth	37.88	34.34	10.31	119932
Parin Enter	401	364	10.16	500
Vels Film	86.9	78.9	10.14	19200
Atlas Cycles	88.14	80.09	10.05	15066

* the % price rise of the last 3 days

Nifty 50 stocks - Summary Details											
Symbol	LTP	Chng	% Chng	Volume (lacs)	Turnover (crs.)	52w High	Diff with 52w H	52w Low	Diff with 52w L	365 days % chng	30 days % chng
NIFTY 50	24414.40	34.80	0.14%	3301.34	27647.96	26277.35	7.09%	21281.45	14.72%	6.44%	8.63%
ADANIENT	2349.00	-5.00	-0.21%	10.13	238.18	3743.90	37.26%	2025.00	16.00%	0.83%	-18.11%
ADANIPTS	1337.50	16.70	1.26%	32.70	434.55	1621.40	17.51%	995.65	34.33%	15.02%	2.39%
APOLLOHOSP	6970.00	-39.00	-0.56%	3.38	236.96	7545.35	7.63%	5693.20	22.43%	4.39%	15.72%
ASIANPAINT	2322.00	-96.00	-3.97%	17.12	404.31	3394.90	31.60%	2124.75	9.28%	2.63%	-17.53%
AXISBANK	1163.00	1.60	0.14%	42.64	495.28	1339.65	13.19%	933.50	24.58%	6.42%	1.55%
BAJAJ-AUTO	7845.00	-100.50	-1.26%	4.60	362.26	12774.00	38.59%	7089.35	10.66%	3.39%	-12.23%
BAJAJFINSV	2030.50	-5.30	-0.26%	10.78	218.42	2135.00	4.89%	1419.05	43.09%	6.46%	26.34%
BAJFINANCE	8977.00	179.50	2.04%	11.64	1037.43	9660.00	7.07%	6375.70	40.80%	0.90%	28.25%
BEL	310.10	-0.40	-0.13%	192.74	598.26	340.50	8.93%	221.00	40.32%	10.89%	33.92%
BHARTIARTL	1892.70	-8.30	-0.44%	55.55	1054.87	1917.00	1.27%	1219.05	55.26%	9.04%	48.12%
CIPLA	1511.00	-0.40	-0.03%	14.25	214.85	1702.05	11.22%	1317.25	14.71%	6.79%	6.18%
COALINDIA	384.20	5.95	1.57%	91.62	350.20	543.55	29.32%	349.25	10.01%	-1.77%	-17.88%
DRREDDY	1162.00	1.60	0.14%	14.21	164.69	1421.49	18.25%	1020.00	13.92%	4.55%	-81.56%
EICHERMOT	5468.50	-46.50	-0.84%	3.50	192.70	5906.50	7.42%	4253.85	28.55%	5.09%	19.92%
GRASIM	2697.70	-31.00	-1.14%	4.18	112.89	2877.75	6.26%	2171.60	24.23%	4.27%	11.23%
HCLTECH	1565.30	-13.80	-0.87%	54.70	854.74	2012.20	22.21%	1235.00	26.74%	11.04%	16.21%
HDFCBANK	1945.00	13.30	0.69%	107.10	2077.70	1978.90	1.71%	1426.80	36.32%	6.30%	26.86%
HDFCLIFE	721.40	-1.20	-0.17%	16.57	120.05	761.20	5.23%	511.40	41.06%	4.87%	30.19%
HEROMOTOCO	3860.50	-12.10	-0.31%	4.48	173.39	6246.25	38.19%	3344.00	15.45%	5.83%	-14.13%
HINDALCO	635.85	5.80	0.92%	35.88	227.84	772.65	17.71%	546.45	16.36%	5.02%	-1.37%
HINDUNILVR	2367.10	-14.70	-0.62%	16.10	382.20	3035.00	22.01%	2136.00	10.82%	6.11%	5.57%
ICICIBANK	1437.10	5.50	0.38%	104.80	1500.01	1446.80	0.67%	1051.05	36.73%	7.21%	24.89%
INDUSINDBK	830.60	-1.20	-0.14%	94.33	783.00	1550.00	46.41%	606.00	37.06%	21.96%	-44.45%
INFY	1508.80	-2.70	-0.18%	56.92	858.89	2006.45	24.80%	1307.00	15.44%	4.12%	6.00%
ITC	430.15	-5.40	-1.24%	97.10	419.26	528.50	18.61%	390.15	10.25%	6.31%	0.18%
JIOFIN	256.50	5.30	2.11%	193.93	491.49	378.90	32.30%	198.65	29.12%	12.99%	-32.15%
JSWSTEEL	966.00	-1.50	-0.16%	10.14	98.27	1074.90	10.13%	823.80	17.26%	-3.80%	9.86%
KOTAKBANK	2100.00	26.00	1.25%	37.39	778.77	2301.90	8.77%	1594.00	31.74%	-2.72%	27.69%
LT	3327.00	-7.00	-0.21%	24.23	804.02	3963.50	16.06%	2965.30	12.20%	2.27%	-3.73%
M&M	3109.90	41.50	1.35%	29.43	911.73	3270.95	4.92%	2160.00	43.98%	18.17%	37.91%
MARUTI	12585.00	4.00	0.03%	3.04	382.62	13680.00	8.00%	10725.00	17.34%	9.57%	1.14%
NESTLEIND	2330.70	-25.80	-1.09%	6.77	158.11	2778.00	16.10%	2110.00	10.46%	4.17%	-4.11%
NTPC	342.60	0.80	0.23%	84.65	288.83	448.45	23.60%	292.80	17.01%	-2.45%	-4.20%
ONGC	238.67	1.67	0.70%	166.89	396.81	345.00	30.82%	205.00	16.42%	4.86%	-16.00%
POWERGRID	311.40	3.80	1.24%	146.79	456.41	366.25	14.98%	247.30	25.92%	4.66%	0.24%
RELIANCE	1405.90	-15.00	-1.06%	134.40	1898.76	1608.80	12.61%	1114.85	26.11%	17.95%	-49.95%
SBILIFE	1741.10	15.10	0.87%	7.53	131.19	1936.00	10.07%	1307.70	33.14%	14.11%	19.81%
SBIN	777.80	3.70	0.48%	155.86	1208.98	912.00	14.71%	680.00	14.38%	0.87%	-4.17%
SHRIRAMFIN	635.00	11.55	1.85%	59.84	377.93	730.45	13.07%	438.60	44.78%	-4.61%	-75.53%
SUNPHARMA	1780.90	-38.20	-2.10%	20.15	360.78	1960.35	9.15%	1377.20	29.31%	6.42%	18.96%
TATACONSUM	1145.50	-9.80	-0.85%	17.93	206.31	1250.10	8.37%	882.90	29.74%	6.20%	5.20%
TATAMOTORS	681.80	33.60	5.18%	303.90	2047.00	1179.00	42.17%	535.75	27.26%	5.60%	-36.21%
TATASTEEL	145.70	1.26	0.87%	346.73	503.14	184.60	21.07%	122.62	18.82%	2.88%	-13.82%
TCS	3448.00	-12.00	-0.35%	14.77	508.42	4592.25	24.92%	3056.05	12.83%	4.87%	-11.76%
TECHM	1495.10	-1.10	-0.07%	12.73	190.35	1807.70	17.29%	1193.65	25.25%	13.27%	18.53%
TITAN	3338.00	38.70	1.17%	10.47	349.05	3867.00	13.68%	2925.00	14.12%	7.25%	0.58%
TRENT	5229.00	5.00	0.10%	7.11	371.20	8345.00	37.34%	4196.00	24.62%	-6.09%	15.86%
ULTRACEMCO	11650.00	-43.00	-0.37%	2.17	253.08	12339.00	5.58%	9408.05	23.83%	1.69%	19.60%
WIPRO	244.00	2.81	1.17%	91.30	221.22	324.60	24.83%	208.50	17.03%	-2.07%	-47.41%
ETERNAL	236.48	3.84	1.65%	316.15	740.58	304.70	22.39%	146.30	61.64%	#VALUE!	#VALUE!

Disclaimer / Disclosures

ANALYST CERTIFICATION

I, Mrs. Vaishali Parekh B.com, Research Analyst, author and the name subscribed to this report, hereby certify that all of the views expressed in this research report accurately reflect our views about the subject issuer(s) or securities. We also certify that no part of our compensation was, is, or will be directly or indirectly related to the specific recommendation(s) or view(s) in this report.

Terms & conditions and other disclosures:

Prabhudas Lilladher Pvt. Ltd, Mumbai, India (hereinafter referred to as "PL") is engaged in the business of Stock Broking, Portfolio Manager, Depository Participant and distribution for third party financial products. PL is a subsidiary of Prabhudas Lilladher Advisory Services Pvt Ltd. which has its various subsidiaries engaged in business of commodity broking, investment banking, financial services (margin funding) and distribution of third party financial/other products, details in respect of which are available at www.plindia.com

This document has been prepared by the Research Division of PL and is meant for use by the recipient only as information and is not for circulation. This document is not to be reported or copied or made available to others without prior permission of PL. It should not be considered or taken as an offer to sell or a solicitation to buy or sell any security.

The information contained in this report has been obtained from sources that are considered to be reliable. However, PL has not independently verified the accuracy or completeness of the same. Neither PL nor any of its affiliates, its directors or its employees accepts any responsibility of whatsoever nature for the information, statements and opinion given, made available or expressed herein or for any omission therein.

Recipients of this report should be aware that past performance is not necessarily a guide to future performance and value of investments can go down as well. The suitability or otherwise of any investments will depend upon the recipient's particular circumstances and, in case of doubt, advice should be sought from an independent expert/advisor.

Either PL or its affiliates or its directors or its employees or its representatives or its clients or their relatives may have position(s), make market, act as principal or engage in transactions of securities of companies referred to in this report and they may have used the research material prior to publication.

PL may from time to time solicit or perform investment banking or other services for any company mentioned in this document.

PL is registered as Research Analyst under Securities and Exchange Board of India (Research Analysts) Regulations, 2014 PL submits that no material disciplinary action has been taken on us by any Regulatory Authority impacting Equity Research Analysis activities.

PL or its research analysts or its associates or his relatives do not have any financial interest in the subject company.

PL or its research analysts or its associates or his relatives do not have actual/beneficial ownership of one per cent or more securities of the subject company at the end of the month immediately preceding the date of publication of the research report.

PL or its research analysts or its associates or his relatives do not have any material conflict of interest at the time of publication of the research report.

PL or its associates might have received compensation from the subject company in the past twelve months.

PL or its associates might have managed or co-managed public offering of securities for the subject company in the past twelve months or mandated by the subject company for any other assignment in the past twelve months.

PL or its associates might have received any compensation for investment banking or merchant banking or brokerage services from the subject company in the past twelve months.

PL or its associates might have received any compensation for products or services other than investment banking or merchant banking or brokerage services from the subject company in the past twelve months PL or its associates might have received any compensation or other benefits from the subject company or third party in connection with the research report.

PL encourages independence in research report preparation and strives to minimize conflict in preparation of research report. PL or its analysts did not receive any compensation or other benefits from the subject Company or third party in connection with the preparation of the research report. PL or its Research Analysts do not have any material conflict of interest at the time of publication of this report.

It is confirmed that Mrs.Vaishali Parekh B.com, Research Analyst of this report has not received any compensation from the companies mentioned in the report in the preceding twelve months compensation of our Research Analysts is not based on any specific merchant banking, investment banking or brokerage service transactions.

The Research analysts for this report certifies that all of the views expressed in this report accurately reflect his or her personal views about the subject company or companies and its or their securities, and no part of his or her compensation was, is or will be, directly or indirectly related to specific recommendations or views expressed in this report.

The research analysts for this report has not served as an officer, director or employee of the subject company PL or its research analysts have not engaged in market making activity for the subject company

Our sales people, traders, and other professionals or affiliates may provide oral or written market commentary or trading strategies to our clients that reflect opinions that are contrary to the opinions expressed herein, and our proprietary trading and investing businesses may make investment decisions that are inconsistent with the recommendations expressed herein. In reviewing these materials, you should be aware that any or all of the foregoing, among other things, may give rise to real or potential conflicts of interest.

PL and its associates, their directors and employees may (a) from time to time, have a long or short position in, and buy or sell the securities of the subject company or (b) be engaged in any other transaction involving such securities and earn brokerage or other compensation or act as a market maker in the financial instruments of the subject company or act as an advisor or lender/borrower to the subject company or may have any other potential conflict of interests with respect to any recommendation and other related information and opinions.