

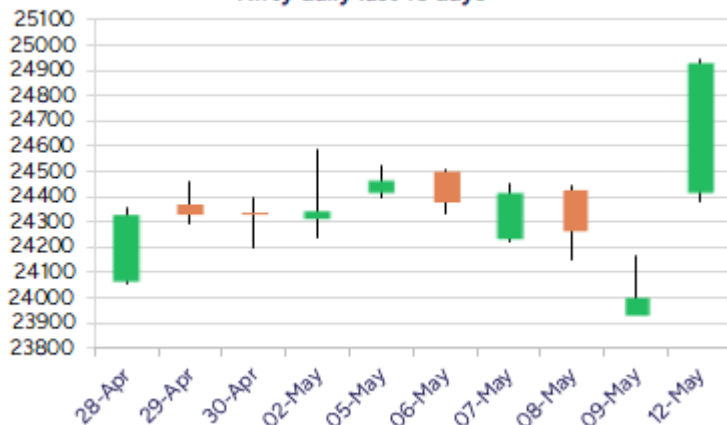
Date: 13<sup>th</sup> May 2025

\* Sensex 82429.90 + 2975.43

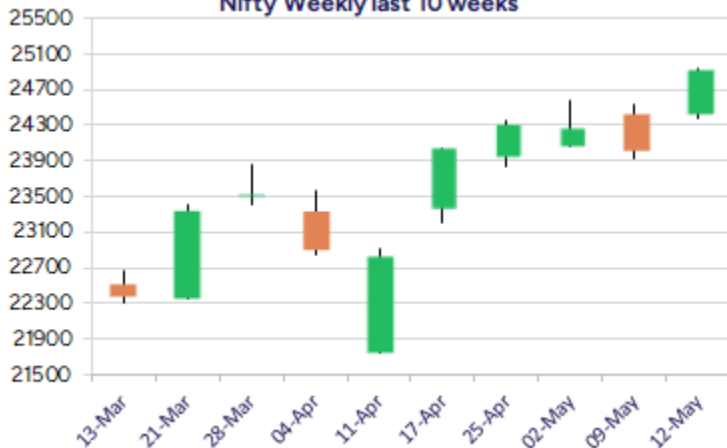
\* Nifty 24924.70 + 916.70

\* Bank Nifty 55382.85 + 1787.60

Nifty daily last 10 days



Nifty Weekly last 10 weeks



\*Blue candle → Close rate > Open rate \* Red candle → Close rate < Open rate

## Market Preview

### Nifty regains strength with Ceasefire

Nifty, after a big gap up near the 24400 level, bulls gained strength as the day progressed to end up in the big green candle of 916 points near the 24924 level, improving the sentiment. Bank Nifty also moved above 55000 with almost a 3.34% gain for the day to close near the 55400 level. Sector-wise, all the sectors ended in the green, with IT, real estate, metal, and banking & financial stocks among the major gainers. The market breadth was very strong, with the advance decline indicating a ratio of 5:2 at close.

## Market Forecast

### Nifty daily range 24700-25200

Nifty witnessed a big gap-up opening with Border Ceasefire news, which has indicated a robust move with the bulls gaining strength over the bears, closing above the previous peak of the 24800 zone, and with further targets of 25300 and 25800 levels expected, the bias and sentiment have turned overall positive as of now. The important 200DMA zone of the 24050 level shall be positioned as the major support for the short term.

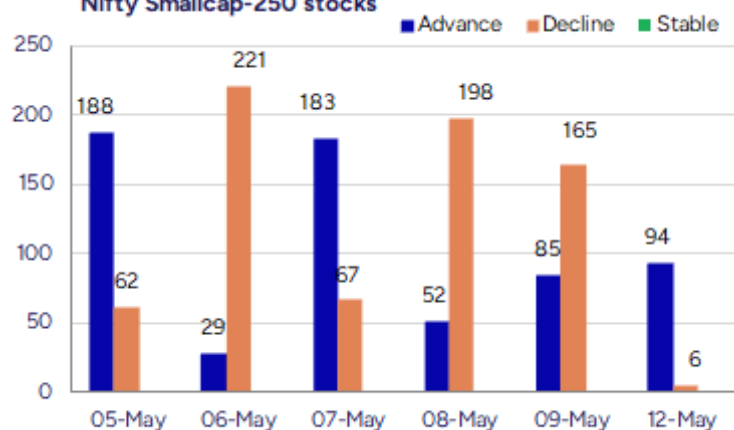
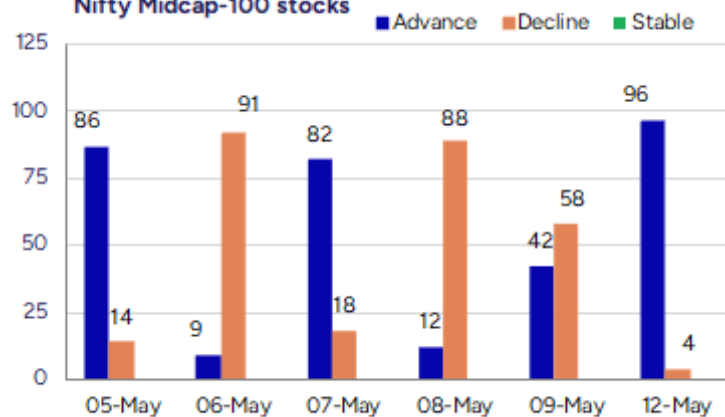
Bank Nifty has indicated a strong move past the 55000 zone to improve the overall bias, and a decisive move past the 55900 levels shall further strengthen the trend to anticipate a further rise in the coming days with targets of 56700 and 59020 levels open. The index would have the immediate support of the 54000 level, and with frontline banking stocks beginning to gain momentum, the overall sentiment looks positive.

The support for the day is seen at 24700 levels, while the resistance is seen at 25200 levels. Bank Nifty would have the daily range of 54500-56000 levels.

Indices	Period	Closing	% Chng	Trend	Reversal	2 Sup	1 Sup	Pivot	1 Res	2 Res
Nifty	Daily	24924.70	3.82%	1	24733.50	24184	24554	24749	25120	25315
	Weekly	24008.00	-1.39%	8	23732.00	23566	23787	24157	24378	24747
	Monthly	24334.20	3.46%	-7	24274.15	20798	22566	23512	25279	26225
Bank Nifty	Daily	55382.85	3.34%	1	55148.20	54227	54805	55136	55713	56044
	Weekly	53595.25	-2.76%	-1	53957.50	52279	52937	54141	54799	56004
	Monthly	55087.15	6.83%	1	53311.35	46522	50805	53451	57733	60379
Sensex	Daily	82429.90	3.74%	1	81880.00	80014	81222	81859	83067	83704
	Weekly	79454.47	-1.30%	8	78277.25	77743	78599	79824	80680	81905
	Monthly	80242.24	3.65%	-7	80009.00	68245	74243	77449	83447	86653

**Gainers - Losers ( Nifty 500 Stocks )**

Gainers				Losers			
Company Name	Last Price	% Gain	Volume	Company Name	Last Price	% Loss	Volume
Ndr Auto Compon	884.4	20	371012	Sathlokhar Syne	428.15	-11.61	642000
Inspirisys Solu	92.6	19.99	61125	KPR Mill	1181.75	-9.53	3264035
Birla Corp	1268.8	19.99	401489	Jindal Worldwid	60.7	-7.89	7047182
Ginni Filaments	33.14	19.99	344530	Premium Plast	27.05	-6.72	42000
IFGL Refractory	442	19.99	540151	Pranik Logistic	61.1	-6	17600
Man Industries	314.25	19.99	2233331	Premier Explo	451.5	-5.84	1772159
Centrum Capital	28.61	18.13	3681205	Giriraj Civil D	185	-5.61	2250

**Nifty Smallcap-250 stocks**

**Nifty Midcap-100 stocks**


## Nifty Daily chart with RSI indicator



## BankNifty Daily chart with RSI indicator



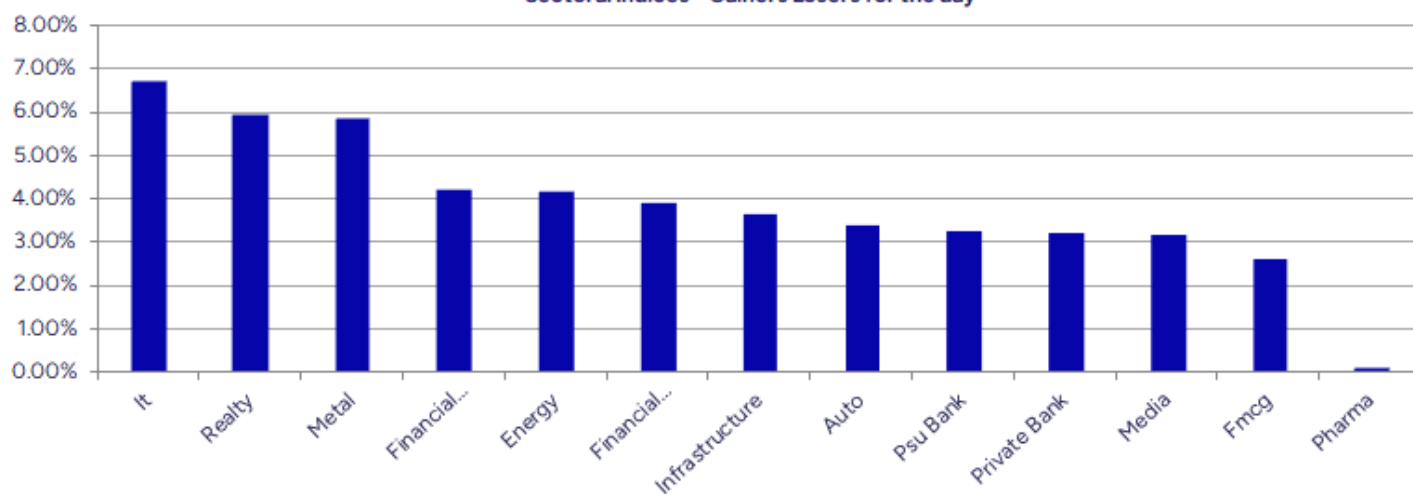
Breakouts - Cross above 200 DMA			
Company Name	LCP	Change %	200 DMA
Ginni Filaments	33.14	17.10	28.3
Syrma SGS	541.7	11.79	484.57
Taj GVK Hotels	407.9	9.86	371.29
Innova Captab	932	9.40	851.93
Aries Agro	304.15	8.82	279.51
Lloyds Luxuries	102.4	8.01	94.81
Gujarat Apollo	354.35	7.36	330.05
Balaji Telefilm	72.31	6.94	67.62
AAVAS Financier	1874.9	6.66	1757.91
Persistent	5876.5	6.58	5513.61
Amber Enterpris	6237	6.57	5852.24
C E Info	1980.5	6.09	1866.82
Vinyas Innovati	875.85	6.09	825.57
Punjab Chemical	1116.6	6.02	1053.19
Birla Corp	1268.8	5.99	1197.06
Somi Conveyor	186.97	5.78	176.76
JagsonpalPharma	222.03	5.59	210.27
Siyaram Silk	701.7	546.00%	665.38

\* Stocks crossing above its Simple Moving Average (200DMA)

Breakdown - Cross below 200 DMA			
Company Name	LCP	Change %	200 DMA
Premier Explo	451.5	-5.08	475.64
Shakti Pumps	853.25	-0.93	861.25

\* Stocks crossing below its Simple Moving Average (200DMA)

Sectoral Indices - Gainers Losers for the day



Stocks witnessing a volume surge as compared to their 5 day average volume

Watch out for the stocks that have seen a huge spurt in its share price over the last three days

Volume Shockers - NSE					
Company name	LCP	% Chg	Volume	Avg Vol *	% Chg
Mahickra Chemic	116.1	1.84	260250	1950	13246
Sundaram-Clayto	2029	-0.05	664329	9489	6901
Cera Sanitary	6614.5	13.42	610801	9282	6481
Jindal Worldwid	60.7	-7.89	7046164	138074	5003
Grill Splendour	113.4	5	177600	3840	4525
Diamond Power	95.46	7.82	296676	6800	4263
Paras Defence	1380.1	-5.38	3112910	74764	4064
Shakti Pumps	853.25	-2.86	1538523	38631	3883
Ideaforge Tech	492	6.15	8742888	273033	3102
JBM Auto	691.75	11.44	5726117	180877	3066
Bajaj Electric	610.2	15.15	2216756	82368	2591
Sportking India	120.64	8.86	2122551	88613	2295
Netweb	1720.9	9.26	3783375	163390	2216
Premier Explo	451.5	-5.84	1772159	77069	2199
IFGL Refractory	442	19.99	540151	26538	1935
A B Infrabuild	100.71	6.35	287518	15200	1792
Hind Motors	25.4	9.2	7730307	416435	1756
Punjab Chemical	1116.6	8.82	150683	8140	1751
KPR Mill	1181.75	-9.53	3263802	178619	1727
Laxmi Goldorna	538.45	2.53	19089	1094	1645

\* the Average Volume of last 5 days

Price Shockers - NSE				
Company name	LCP	Prv Close	% Chg	Volume
Ginni Filaments	33.14	23.87	38.84	344530
Ndr Auto Compon	884.4	678.1	30.42	371012
Pavna Ind	393	312.5	25.76	41786
Asahi Songwon	469.4	373.4	25.71	251181
IFGL Refractory	442	355.5	24.33	540151
Shankara Buildi	726.95	585.85	24.08	194023
Cera Sanitary	6614.5	5401.5	22.46	610814
Mayur Uniquoter	575.35	471.55	22.01	429435
Shriram Pistons	2256.7	1861	21.26	241559
Inspirisys Solu	92.6	76.69	20.75	61125
Bharat Seats	109.03	90.39	20.62	1151193
Birla Corp	1268.8	1054.5	20.32	401499
Nahar Ent	119.33	99.9	19.45	157567
Centrum Capital	28.61	23.98	19.31	3685288
Butterfly	728.05	621.35	17.17	127452
Madhya Bharat A	297.65	254.55	16.93	125672
Globe Internati	101.7	87	16.9	145500
Man Industries	314.25	269.75	16.5	2233332
EPL	230.61	198.03	16.45	5844386
Krishana Phosch	349.25	301.05	16.01	421405

\* the % price rise of the last 3 days



Symbol	LTP	Chng	% Chng	Volume (lacs)	Turnover (crs.)	52w High	Diff with 52w H	52w Low	Diff with 52w L	365 days % chng	30 days % chng
NIFTY 50	24924.70	916.70	3.82%	3686.56	30360.15	26277.35	5.15%	21281.45	17.12%	5.17%	8.85%
ADANIENT	2425.00	174.00	7.73%	21.47	516.14	3743.90	35.23%	2025.00	19.75%	-3.03%	-19.53%
ADANIPTS	1361.50	55.20	4.23%	36.63	498.99	1621.40	16.03%	995.65	36.74%	12.17%	3.12%
APOLLOHOSP	6920.00	198.00	2.95%	2.37	163.35	7545.35	8.29%	5693.20	21.55%	-0.87%	15.05%
ASIANPAINT	2339.30	39.70	1.73%	9.40	221.68	3394.90	31.09%	2124.75	10.10%	-3.93%	-17.02%
AXISBANK	1204.50	53.40	4.64%	76.16	912.17	1339.65	10.09%	933.50	29.03%	7.69%	2.77%
BAJAJ-AUTO	8047.00	364.50	4.74%	2.97	236.39	12774.00	37.00%	7089.35	13.51%	-1.11%	-14.47%
BAJAJFINSV	2048.00	78.00	3.96%	10.58	216.10	2135.00	4.07%	1419.05	44.32%	1.22%	25.26%
BAJFINANCE	9013.00	372.00	4.31%	10.64	954.61	9660.00	6.70%	6375.70	41.36%	-3.14%	29.28%
BEL	322.20	6.35	2.01%	399.03	1279.38	340.50	5.37%	221.00	45.79%	10.82%	39.08%
BHARTIARTL	1873.00	24.60	1.33%	39.36	735.90	1917.00	2.30%	1219.05	53.64%	5.23%	42.06%
CIPLA	1507.30	27.30	1.84%	17.06	255.29	1702.05	11.44%	1317.25	14.43%	1.16%	10.48%
COALINDIA	394.80	12.40	3.24%	67.43	265.59	543.55	27.37%	349.25	13.04%	-2.47%	-14.91%
DRREDDY	1193.60	37.70	3.26%	50.65	597.26	1421.49	16.03%	1020.00	17.02%	4.18%	-80.48%
EICHERMOT	5525.00	201.00	3.78%	3.28	180.15	5906.50	6.46%	4253.85	29.88%	-0.50%	14.30%
GRASIM	2741.00	106.20	4.03%	4.98	136.25	2877.75	4.75%	2171.60	26.22%	-0.62%	10.84%
HCLTECH	1663.00	93.60	5.96%	40.28	665.11	2012.20	17.35%	1235.00	34.66%	12.86%	19.24%
HDFCBANK	1956.40	66.70	3.53%	93.09	1814.26	1978.90	1.14%	1426.80	37.12%	4.59%	31.42%
HDFCLIFE	733.65	20.05	2.81%	14.88	109.13	761.20	3.62%	511.40	43.46%	4.09%	30.09%
HEROMOTOCO	3998.00	144.10	3.74%	5.47	216.30	6246.25	35.99%	3344.00	19.56%	5.13%	-20.98%
HINDALCO	651.25	24.10	3.84%	54.75	354.07	772.65	15.71%	546.45	19.18%	4.47%	0.25%
HINDUNILVR	2381.70	48.80	2.09%	12.75	303.10	3035.00	21.53%	2136.00	11.50%	-1.41%	-1.25%
ICICIBANK	1451.50	62.60	4.51%	99.25	1425.98	1453.00	0.10%	1051.05	38.10%	5.89%	24.34%
INDUSINDBK	790.00	-28.20	-3.45%	145.72	1168.71	1550.00	49.03%	606.00	30.36%	18.67%	-41.98%
INFY	1623.50	115.90	7.69%	113.73	1812.66	2006.45	19.09%	1307.00	24.22%	6.96%	5.80%
ITC	435.10	11.55	2.73%	80.32	348.27	528.50	17.67%	390.15	11.52%	0.47%	-2.26%
JIOFIN	263.00	14.65	5.90%	194.34	507.79	376.00	30.05%	198.65	32.39%	7.97%	-28.60%
JSWSTEEL	1004.30	47.30	4.94%	13.36	132.61	1074.90	6.57%	823.80	21.91%	-3.36%	12.11%
KOTAKBANK	2143.00	39.90	1.90%	30.22	649.07	2301.90	6.90%	1602.45	33.73%	-0.38%	29.19%
LT	3588.00	144.10	4.18%	31.47	1122.50	3963.50	9.47%	2965.30	21.00%	10.52%	5.27%
M&M	3097.50	115.40	3.87%	21.67	664.74	3270.95	5.30%	2160.00	43.40%	15.57%	35.98%
MARUTI	12625.00	375.00	3.06%	1.85	232.26	13680.00	7.71%	10725.00	17.72%	5.61%	-3.36%
NESTLEIND	2388.50	63.10	2.71%	4.01	94.86	2778.00	14.02%	2110.00	13.20%	-1.52%	-8.20%
NTPC	348.95	14.20	4.24%	79.78	276.63	448.45	22.19%	292.80	19.18%	-7.04%	-5.84%
ONGC	244.00	9.04	3.85%	113.73	276.19	345.00	29.28%	205.00	19.02%	1.99%	-13.06%
POWERGRID	309.90	10.60	3.54%	71.44	220.64	366.25	15.39%	247.30	25.31%	-1.58%	-1.47%
RELIANCE	1436.90	59.70	4.33%	106.73	1522.38	1608.80	10.68%	1114.85	28.89%	12.98%	-51.07%
SBILIFE	1746.00	46.20	2.72%	7.29	127.41	1936.00	9.81%	1307.70	33.52%	11.69%	18.71%
SBIN	800.95	21.70	2.78%	150.96	1207.48	912.00	12.18%	680.00	17.79%	3.37%	-4.66%
SHRIRAMFIN	644.50	43.05	7.16%	95.60	610.95	730.45	11.77%	438.60	46.94%	-5.85%	-74.34%
SUNPHARMA	1689.90	-54.90	-3.15%	92.21	1542.20	1960.35	13.80%	1377.20	22.71%	3.39%	15.81%
TATACONSUM	1144.50	30.80	2.77%	7.49	85.60	1250.10	8.45%	882.90	29.63%	1.44%	2.09%
TATAMOTORS	719.70	11.20	1.58%	201.33	1449.79	1179.00	38.96%	535.75	34.34%	19.07%	-32.31%
TATASTEEL	150.95	8.17	5.72%	470.76	705.16	184.60	18.23%	122.62	23.10%	7.02%	-12.00%
TCS	3626.50	186.20	5.41%	22.29	797.40	4592.25	21.03%	3056.05	18.67%	6.46%	-11.65%
TECHM	1573.80	80.10	5.36%	18.91	293.76	1807.70	12.94%	1193.65	31.85%	16.49%	18.14%
TITAN	3567.00	56.70	1.62%	9.57	340.85	3867.00	7.76%	2925.00	21.95%	8.51%	6.70%
TRENT	5460.00	347.00	6.79%	12.04	647.14	8345.00	34.57%	4196.00	30.12%	6.95%	14.35%
ULTRACEMCO	11745.00	381.00	3.35%	1.83	213.18	12339.00	4.81%	9408.05	24.84%	-1.21%	19.73%
WIPRO	256.50	14.49	5.99%	197.89	500.22	324.60	20.98%	208.50	23.02%	0.94%	-46.44%
ETERNAL	239.05	11.91	5.24%	317.55	752.49	304.70	21.55%	146.30	63.40%	#VALUE!	#VALUE!

## Disclaimer / Disclosures

### ANALYST CERTIFICATION

I, Mrs. Vaishali Parekh B.com, Research Analyst, author and the name subscribed to this report, hereby certify that all of the views expressed in this research report accurately reflect our views about the subject issuer(s) or securities. We also certify that no part of our compensation was, is, or will be directly or indirectly related to the specific recommendation(s) or view(s) in this report.

Terms & conditions and other disclosures:

Prabhudas Lilladher Pvt. Ltd, Mumbai, India (hereinafter referred to as "PL") is engaged in the business of Stock Broking, Portfolio Manager, Depository Participant and distribution for third party financial products. PL is a subsidiary of Prabhudas Lilladher Advisory Services Pvt Ltd. which has its various subsidiaries engaged in business of commodity broking, investment banking, financial services (margin funding) and distribution of third party financial/other products, details in respect of which are available at [www.plindia.com](http://www.plindia.com)

This document has been prepared by the Research Division of PL and is meant for use by the recipient only as information and is not for circulation. This document is not to be reported or copied or made available to others without prior permission of PL. It should not be considered or taken as an offer to sell or a solicitation to buy or sell any security.

The information contained in this report has been obtained from sources that are considered to be reliable. However, PL has not independently verified the accuracy or completeness of the same. Neither PL nor any of its affiliates, its directors or its employees accepts any responsibility of whatsoever nature for the information, statements and opinion given, made available or expressed herein or for any omission therein.

Recipients of this report should be aware that past performance is not necessarily a guide to future performance and value of investments can go down as well. The suitability or otherwise of any investments will depend upon the recipient's particular circumstances and, in case of doubt, advice should be sought from an independent expert/advisor.

Either PL or its affiliates or its directors or its employees or its representatives or its clients or their relatives may have position(s), make market, act as principal or engage in transactions of securities of companies referred to in this report and they may have used the research material prior to publication.

PL may from time to time solicit or perform investment banking or other services for any company mentioned in this document.

PL is registered as Research Analyst under Securities and Exchange Board of India (Research Analysts) Regulations, 2014 PL submits that no material disciplinary action has been taken on us by any Regulatory Authority impacting Equity Research Analysis activities.

PL or its research analysts or its associates or his relatives do not have any financial interest in the subject company.

PL or its research analysts or its associates or his relatives do not have actual/beneficial ownership of one per cent or more securities of the subject company at the end of the month immediately preceding the date of publication of the research report.

PL or its research analysts or its associates or his relatives do not have any material conflict of interest at the time of publication of the research report.

PL or its associates might have received compensation from the subject company in the past twelve months.

PL or its associates might have managed or co-managed public offering of securities for the subject company in the past twelve months or mandated by the subject company for any other assignment in the past twelve months.

PL or its associates might have received any compensation for investment banking or merchant banking or brokerage services from the subject company in the past twelve months.

PL or its associates might have received any compensation for products or services other than investment banking or merchant banking or brokerage services from the subject company in the past twelve months PL or its associates might have received any compensation or other benefits from the subject company or third party in connection with the research report.

PL encourages independence in research report preparation and strives to minimize conflict in preparation of research report. PL or its analysts did not receive any compensation or other benefits from the subject Company or third party in connection with the preparation of the research report. PL or its Research Analysts do not have any material conflict of interest at the time of publication of this report.

It is confirmed that Mrs.Vaishali Parekh B.com, Research Analyst of this report has not received any compensation from the companies mentioned in the report in the preceding twelve months compensation of our Research Analysts is not based on any specific merchant banking, investment banking or brokerage service transactions.

The Research analysts for this report certifies that all of the views expressed in this report accurately reflect his or her personal views about the subject company or companies and its or their securities, and no part of his or her compensation was, is or will be, directly or indirectly related to specific recommendations or views expressed in this report.

The research analysts for this report has not served as an officer, director or employee of the subject company PL or its research analysts have not engaged in market making activity for the subject company

Our sales people, traders, and other professionals or affiliates may provide oral or written market commentary or trading strategies to our clients that reflect opinions that are contrary to the opinions expressed herein, and our proprietary trading and investing businesses may make investment decisions that are inconsistent with the recommendations expressed herein. In reviewing these materials, you should be aware that any or all of the foregoing, among other things, may give rise to real or potential conflicts of interest.

PL and its associates, their directors and employees may (a) from time to time, have a long or short position in, and buy or sell the securities of the subject company or (b) be engaged in any other transaction involving such securities and earn brokerage or other compensation or act as a market maker in the financial instruments of the subject company or act as an advisor or lender/borrower to the subject company or may have any other potential conflict of interests with respect to any recommendation and other related information and opinions.