

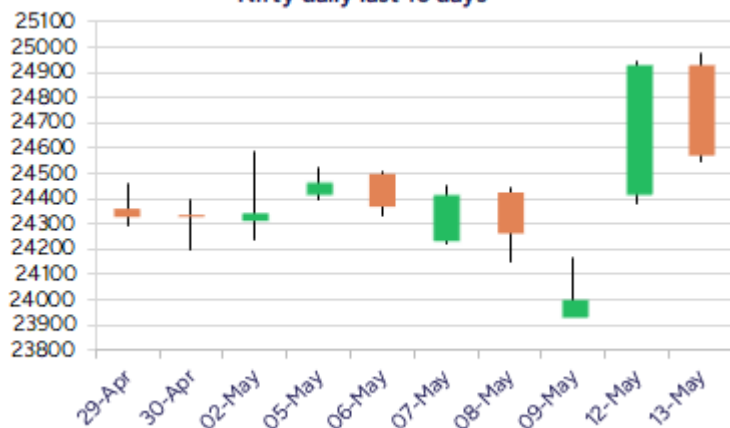
Date: 14th May 2025

* Sensex 81148.22 - 1281.68

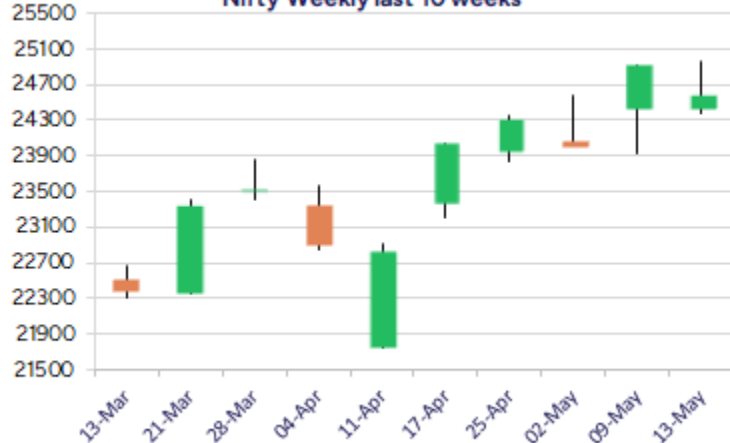
* Nifty 24578.35 - 346.35

* Bank Nifty 54940.85 - 442.00

Nifty daily last 10 days



Nifty Weekly last 10 weeks



*Blue candle → Close rate > Open rate * Red candle → Close rate < Open rate

Market Preview

Nifty sheds gains after robust move

Nifty cooled off with profit booking witnessed after resisting near the 24900 zone and closed near the 24600 levels with bias remaining intact. BankNifty in a similar pattern, resisted near the 55500 zone and succumbed to profit booking to end the session near 55000 zone with overall trend maintained positive. The market breadth was strong with the advance decline indicating a positive ratio of more than 2:1 at close.

Market Forecast

Nifty daily range 24400-24800

Nifty, after the robust session witnessed some profit booking to cool off from the 24900-zone finding resistance and has arrived near the important support zone of 24400-24500 band where it can find some consolidation expecting for another round of fresh upward move in the coming days. The index would need to sustain the important level of 24400 zone to maintain the overall bias intact failing which there can be extended profit booking activity with 24000 level as the crucial support.

BankNifty, after finding resistance near the 55500 zone, shed their gains to end below the 55000 level with bias remaining intact and having the important support zone of 54000 which needs to be sustained. On the upside, the index has the crucial hurdle of 56000 level which needs to be breached decisively to trigger for a breakout and expect for fresh upward move in the coming days.

The support for the day is seen at 24400 levels while the resistance is seen at 24800 levels. BankNifty would have the daily range of 54500-55600 levels.

Indices	Period	Closing	% Chng	Trend	Reversal	2 Sup	1 Sup	Pivot	1 Res	2 Res
Nifty	Daily	24578.35	-1.39%	-1	24768.80	24274	24426	24700	24852	25126
	Weekly	24008.00	-1.39%	8	23736.90	23566	23787	24157	24378	24747
	Monthly	24334.20	3.46%	-7	24274.15	20798	22566	23512	25279	26225
Bank Nifty	Daily	54940.85	-0.80%	-1	55022.05	54499	54720	55110	55331	55721
	Weekly	53595.25	-2.76%	-1	53943.20	52279	52937	54141	54799	56004
	Monthly	55087.15	6.83%	1	53311.35	46522	50805	53451	57733	60379
Sensex	Daily	81148.22	-1.55%	-1	82173.50	80059	80604	81588	82133	83117
	Weekly	79454.47	-1.30%	8	78277.25	77743	78599	79824	80680	81905
	Monthly	80242.24	3.65%	-7	80009.00	68245	74243	77449	83447	86653

Daily Trend turned Up			
Scrip Name	LCP	Curr Trnd	Reversal
AJANTPHARM	2592.7	-8	2508.45
ALKEM	5126.5	-11	5017.2
BANKBARODA	232.75	-11	228.5
BANKINDIA	112.56	-11	110.9
CIPLA	1520.1	-7	1508.85
DCBBANK	142.68	-5	137.05
GLENMARK	1417.4	-2	1401.3
HAL	4609.8	-5	4552.15
HDFCLIFE	735.05	-5	732.85
JUBLFOOD	701.7	-5	697.3
JUBLPHARMA	907.05	-11	880.7
LUPINLTD	2064.4	-7	2050.45

* Trends turned Up after a significant period

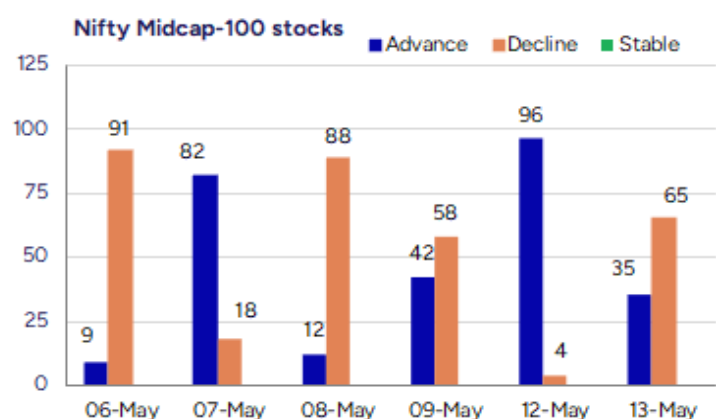
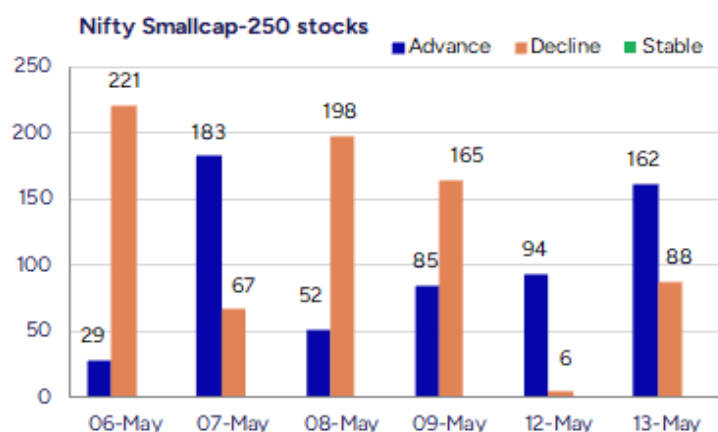
Daily Trend turned Down			
Scrip Name	LCP	Curr Trnd	Reversal
BALKRISIND	2696.1	10	2750.45
DEEPAKNTR	1948.2	1	1957.75
EICHERMOT	5419	1	5440.7
EMAMILTD	620.5	1	633.35
GODREJPROP	2102.4	1	2131.45
GRASIM	2708.7	1	2728.9
ITC	427.9	1	435.4
MARICO	727.6	1	732.85
MUTHOOTFIN	2216.5	9	2243.8
ORACLEFIN	8478	1	8550.25
PIIND	3638.6	1	3686.4
SRF	2928.2	2	2996.4

* Trends turned Down after a significant period

Gainers - Losers (Nifty 500 Stocks)

Gainers			
Company Name	Last Price	% Gain	Volume
Inspirisys Solu	111.12	20	728694
Dynamic Cables	733.05	20	1115495
Linc	134.75	15.24	800215
InfoBeans Tech	351.8	15.04	415439
Ginni Filaments	37.95	14.51	3468489
CARE Ratings	1519.3	13.01	1949362
Centum Electron	2020.5	12.87	235705

Losers			
Company Name	Last Price	% Loss	Volume
GP Eco Solution	349.35	-10	165600
Rappid Valves	279	-10	15600
Ganesh Housing	1005.1	-9.2	701951
Kalahridhaan	8.2	-8.89	9000
Anup Eng	3025.2	-8.38	192646
Krsnaa Diagnost	683.65	-7.59	589564
Gajanand Intl	15.35	-7.53	15000



Nifty Daily chart with RSI indicator



BankNifty Daily chart with RSI indicator

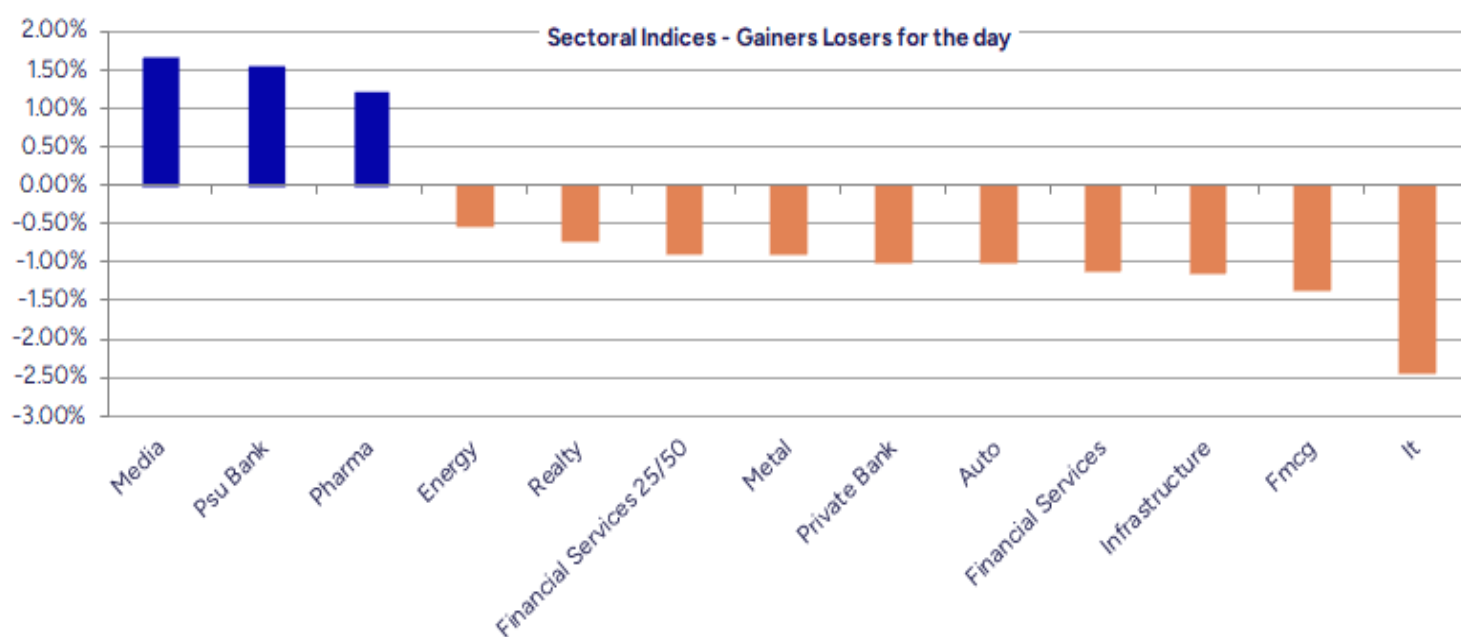


Breakouts - Cross above 200 DMA			
Company Name	LCP	Change %	200 DMA
Magadh Sugar	773.1	10.80	697.75
Dynamic Cables	733.05	6.20	690.28
Basilic Fly	401.35	4.80	382.95
Binani Ind	15.61	3.93	15.02
CCCL	15.11	3.56	14.59
Avro India	171.67	3.29	166.21
Lumax Inds	2577.4	3.28	2495.46
Godawari Power	198.89	3.12	192.88
Indo Tech Trans	2446.3	2.99	2375.21
Sambhaav Media	6.54	2.99	6.35
Yaari Digital	13.55	2.96	13.16
Reliance Infra	265.05	2.59	258.35
Nitiraj Enginee	258.15	2.52	251.8
Man Industries	334.6	2.11	327.7
Krishival Foods	260	2.07	254.73
SPIC	82	2.02	80.38
Ram Ratna Wires	567.65	1.85	557.35
Satin Credit	172.07	1.74	169.12

* Stocks crossing above its Simple Moving Average (200DMA)

Breakdown - Cross below 200 DMA			
Company Name	LCP	Change %	200 DMA
Ganesh Housing	1005.1	-6.74	1077.79
KFin Tech	1047.8	-2.61	1075.86
Apollo Tyres	472.4	-1.58	479.99
Niraj Cement	57.37	-1.19	58.06
Ipru Nifty Com	86.39	-0.95	87.22
Uniphos Ent	158.12	-0.87	159.51
Sequent Scienti	167.52	-0.86	168.98
Jubilant Ing.	699.9	-0.77	705.34
Indo Borax	186.52	-0.58	187.61
Parsvnath	20.05	-0.50	20.15
Kotak Nifty100	20.17	-0.40	20.25
SBIETFCON	116.53	-0.39	116.99
MOLOWVOL	36.86	-0.32	36.98
Kotak NiftyInd	116.06	-0.32	116.43
Axis NiftyCons	116.6	-0.28	116.93
NIPP Nifty Ind	126.03	-0.26	126.36
Steel City Secu	100.63	-0.13	100.76
Nuvoco Vistas	340.25	-0.08	340.52

* Stocks crossing below its Simple Moving Average (200DMA)



Stocks witnessing a volume surge as compared to their 5 day average volume

Watch out for the stocks that have seen a huge spurt in its share price over the last three days

Volume Shockers - NSE					
Company name	LCP	% Chg	Volume	Avg Vol *	% Chg
Womancart	233.35	4.99	334400	3520	9400
CARE Ratings	1519.3	13.01	1949362	41501	4597
Diamond Power	93.89	-1.64	309732	6800	4455
Inspirsys Solu	111.12	20	728694	17526	4058
BEW Engineering	202	-0.79	42000	1125	3633
Ginni Filaments	37.95	14.51	3468489	96104	3509
Premier Explo	456.3	1.06	2539072	77069	3195
Ideaforge Tech	538.15	9.38	7410289	273033	2614
Bharat Dynamics	1746.7	11.26	20365506	800547	2444
Paras Defence	1418.9	2.81	1869515	74764	2401
Man Industries	334.6	6.48	4250398	187465	2167
Praxis Home Ret	10.03	2.56	1222696	62438	1858
Redington	272.52	4.44	17614895	939548	1775
Aether Ind.	765.75	-4.98	1039575	57781	1699
Krishna Institu	659.05	1.15	1032436	59456	1636
Krishana Phosch	362.55	3.81	432879	25704	1584
Dynamic Cables	733.05	20	1115495	66776	1571
Centum Electron	2020.5	12.87	235705	14212	1559
Sky Gold	319.1	4.98	427382	25989	1544
Shakti Pumps	842.4	-1.27	628326	38631	1526

* the Average Volume of last 5 days

Price Shockers - NSE				
Company name	LCP	Prv Close	% Chg	Volume
Inspirsys Solu	111.12	77.17	43.99	538802
Man Industries	336.4	261.9	28.45	2602774
Birla Corp	1312	1057.4	24.08	644669
K.P. Energy	421.85	342.55	23.15	407793
Ginni Filaments	33.71	27.62	22.05	924134
IFGL Refractory	448.7	368.35	21.81	83803
Suven Life Sci	173.51	142.45	21.8	1785153
Ndr Auto Compon	896.7	737	21.67	139694
Aarti Surfactan	512.95	429.05	19.55	7647
Cubex Tubings	81.35	68.55	18.67	67892
Jain Irrigation	58.2	49.06	18.63	4308836
Valiant Organic	340.7	288.3	18.18	131739
Centum Electron	1922.1	1629.3	17.97	54395
Indowind Energy	20.9	17.72	17.95	434398
Hilton Metal	62.2	53.2	16.92	88150
Centrum Capital	28.27	24.22	16.72	2280838
Mangalam Organ	440	377.1	16.68	16139
Bajaj Electric	617.25	529.9	16.48	345987
Good Luck	803.1	689.75	16.43	61500
Zodiac Energy	384.35	330.5	16.29	44140

* the % price rise of the last 3 days

Symbol	LTP	Chng	% Chng	Volume (lacs)	Turnover (crs.)	52w High	Diff with 52w H	52w Low	Diff with 52w L	365 days % chng	30 days % chng
NIFTY 50	24578.35	-346.35	-1.39%	4229.74	34576.18	26277.35	6.47%	21281.45	15.49%	9.18%	13.01%
ADANIANT	2438.20	12.90	0.53%	18.15	441.19	3743.90	34.88%	2025.00	20.40%	4.48%	-13.30%
ADANI PORTS	1370.00	7.90	0.58%	33.57	460.46	1621.40	15.51%	995.65	37.60%	16.96%	7.53%
APOLLOHOSP	6926.00	-	#VALUE!	3.24	224.73	7545.35	8.21%	5693.20	21.65%	2.14%	18.55%
ASIANPAINT	2322.60	-33.80	-1.43%	12.20	284.23	3394.90	31.59%	2124.75	9.31%	-1.55%	-14.97%
AXISBANK	1193.30	-9.70	-0.81%	55.70	668.13	1339.65	10.92%	933.50	27.83%	12.54%	7.40%
BAJAJ-AUTO	8066.50	27.00	0.34%	4.07	327.07	12774.00	36.85%	7089.35	13.78%	3.48%	-10.49%
BAJAJFINSV	2022.90	-27.50	-1.34%	22.18	449.25	2135.00	5.25%	1419.05	42.55%	5.35%	30.37%
BAJFINANCE	9050.00	31.50	0.35%	13.36	1212.97	9660.00	6.31%	6375.70	41.95%	1.09%	34.92%
BEL	335.90	13.10	4.06%	579.86	1937.71	340.50	1.35%	221.00	51.99%	13.26%	42.14%
BHARTIARTL	1824.50	-46.30	-2.47%	88.18	1617.19	1917.00	4.83%	1219.05	49.67%	6.50%	43.78%
CIPLA	1520.00	8.40	0.56%	40.42	614.50	1702.05	10.70%	1335.00	13.86%	3.32%	12.84%
COALINDIA	395.80	0.30	0.08%	63.07	250.54	543.55	27.18%	349.25	13.33%	0.87%	-11.99%
DRREDDY	1208.00	12.40	1.04%	31.34	383.45	1421.49	15.02%	1020.00	18.43%	7.76%	-79.81%
EICHERMOT	5424.00	-96.00	-1.74%	4.16	226.60	5906.50	8.17%	4253.85	27.51%	3.16%	18.51%
GRASIM	2713.40	-29.40	-1.07%	3.14	85.29	2877.75	5.71%	2171.60	24.95%	3.45%	15.38%
HCLTECH	1619.90	-50.40	-3.02%	31.18	509.21	2012.20	19.50%	1235.00	31.17%	20.12%	26.90%
HDFCBANK	1924.90	-32.30	-1.65%	121.21	2340.09	1978.90	2.73%	1430.30	34.58%	8.33%	36.12%
HDFCLIFE	735.30	0.70	0.10%	14.45	106.52	761.20	3.40%	511.40	43.78%	7.15%	33.92%
HEROMOTOCO	4055.50	70.60	1.77%	11.98	483.23	6246.25	35.07%	3344.00	21.28%	8.70%	-18.30%
HINDALCO	635.00	-16.95	-2.60%	60.25	384.44	772.65	17.82%	546.45	16.20%	8.60%	4.21%
HINDUNILVR	2359.70	-22.80	-0.96%	19.30	456.49	3035.00	22.25%	2136.00	10.47%	0.69%	0.84%
ICICIBANK	1430.80	-17.70	-1.22%	124.75	1786.85	1453.00	1.53%	1051.05	36.13%	10.43%	29.67%
INDUSINDBK	770.00	-18.50	-2.35%	108.47	846.36	1550.00	50.32%	606.00	27.06%	14.36%	-44.08%
INFY	1567.90	-59.00	-3.63%	128.46	2029.21	2006.45	21.86%	1307.00	19.96%	15.43%	14.18%
ITC	427.90	-7.60	-1.75%	149.76	643.19	528.50	19.04%	390.15	9.68%	3.31%	0.50%
JIOFIN	267.70	4.80	1.83%	193.05	514.42	376.00	28.80%	198.65	34.76%	14.29%	-24.42%
JSWSTEEL	989.40	-15.80	-1.57%	9.34	92.87	1074.90	7.95%	823.80	20.10%	1.51%	17.76%
KOTAKBANK	2119.00	-26.00	-1.21%	43.08	910.03	2301.90	7.95%	1602.45	32.24%	1.60%	31.76%
LT	3570.50	-16.70	-0.47%	23.74	848.09	3963.50	9.92%	2965.30	20.41%	15.12%	9.65%
M&M	3058.00	-46.70	-1.50%	26.82	824.08	3270.95	6.51%	2160.00	41.57%	20.32%	41.57%
MARUTI	12474.00	-142.00	-1.13%	3.78	473.19	13680.00	8.82%	10725.00	16.31%	8.77%	-0.47%
NESTLEIND	2368.00	-15.80	-0.66%	11.67	276.04	2778.00	14.76%	2110.00	12.23%	0.95%	-5.90%
NTPC	342.30	-6.25	-1.79%	147.39	506.28	448.45	23.67%	292.80	16.91%	-3.21%	-1.95%
ONGC	241.00	-3.02	-1.24%	93.36	225.97	345.00	30.14%	205.00	17.56%	5.93%	-9.71%
POWERGRID	299.20	-9.85	-3.19%	179.88	541.34	366.25	18.31%	247.30	20.99%	1.63%	1.74%
RELIANCE	1416.50	-20.00	-1.39%	114.08	1623.60	1608.80	11.95%	1114.85	27.06%	17.85%	-48.97%
SBILIFE	1738.70	-12.80	-0.73%	4.79	83.48	1936.00	10.19%	1307.70	32.96%	15.09%	22.32%
SBIN	801.95	0.30	0.04%	139.09	1115.90	912.00	12.07%	680.00	17.93%	6.34%	-1.92%
SHRIRAMFIN	633.30	-12.65	-1.96%	57.48	367.11	730.45	13.30%	438.60	44.39%	1.12%	-72.45%
SUNPHARMA	1702.20	16.00	0.95%	69.88	1192.53	1960.35	13.17%	1377.20	23.60%	-0.08%	11.92%
TATA CONSUM	1120.60	-25.00	-2.18%	10.97	123.45	1250.10	10.36%	882.90	26.92%	4.34%	5.01%
TATAMOTORS	708.30	-12.50	-1.73%	161.25	1150.21	1179.00	39.92%	535.75	32.21%	21.13%	-31.13%
TATASTEEL	149.60	-2.03	-1.34%	543.90	817.64	184.60	18.96%	122.62	22.00%	13.65%	-6.55%
TCS	3518.00	-102.40	-2.83%	30.63	1084.72	4592.25	23.39%	3056.05	15.12%	12.03%	-7.02%
TECHM	1573.20	0.10	0.01%	37.24	587.76	1807.70	12.97%	1193.65	31.80%	22.68%	24.41%
TITAN	3556.00	-6.90	-0.19%	9.97	354.93	3867.00	8.04%	2925.00	21.57%	10.14%	8.30%
TRENT	5338.00	-103.00	-1.89%	7.29	390.66	8345.00	36.03%	4196.00	27.22%	13.82%	21.68%
ULTRACEMCO	11675.00	-61.00	-0.52%	3.08	358.77	12339.00	5.38%	9427.10	23.85%	2.03%	23.64%
WIPRO	251.80	-5.48	-2.13%	117.14	296.20	324.60	22.43%	208.50	20.77%	7.31%	-43.06%
ETERNAL	231.50	-8.00	-3.34%	448.37	1048.02	304.70	24.02%	146.30	58.24%	#VALUE!	#VALUE!

Disclaimer / Disclosures

ANALYST CERTIFICATION

I, Mrs. Vaishali Parekh B.com, Research Analyst, author and the name subscribed to this report, hereby certify that all of the views expressed in this research report accurately reflect our views about the subject issuer(s) or securities. We also certify that no part of our compensation was, is, or will be directly or indirectly related to the specific recommendation(s) or view(s) in this report.

Terms & conditions and other disclosures:

Prabhudas Lilladher Pvt. Ltd, Mumbai, India (hereinafter referred to as "PL") is engaged in the business of Stock Broking, Portfolio Manager, Depository Participant and distribution for third party financial products. PL is a subsidiary of Prabhudas Lilladher Advisory Services Pvt Ltd. which has its various subsidiaries engaged in business of commodity broking, investment banking, financial services (margin funding) and distribution of third party financial/other products, details in respect of which are available at www.plindia.com

This document has been prepared by the Research Division of PL and is meant for use by the recipient only as information and is not for circulation. This document is not to be reported or copied or made available to others without prior permission of PL. It should not be considered or taken as an offer to sell or a solicitation to buy or sell any security.

The information contained in this report has been obtained from sources that are considered to be reliable. However, PL has not independently verified the accuracy or completeness of the same. Neither PL nor any of its affiliates, its directors or its employees accepts any responsibility of whatsoever nature for the information, statements and opinion given, made available or expressed herein or for any omission therein.

Recipients of this report should be aware that past performance is not necessarily a guide to future performance and value of investments can go down as well. The suitability or otherwise of any investments will depend upon the recipient's particular circumstances and, in case of doubt, advice should be sought from an independent expert/advisor.

Either PL or its affiliates or its directors or its employees or its representatives or its clients or their relatives may have position(s), make market, act as principal or engage in transactions of securities of companies referred to in this report and they may have used the research material prior to publication.

PL may from time to time solicit or perform investment banking or other services for any company mentioned in this document.

PL is registered as Research Analyst under Securities and Exchange Board of India (Research Analysts) Regulations, 2014 PL submits that no material disciplinary action has been taken on us by any Regulatory Authority impacting Equity Research Analysis activities.

PL or its research analysts or its associates or his relatives do not have any financial interest in the subject company.

PL or its research analysts or its associates or his relatives do not have actual/beneficial ownership of one per cent or more securities of the subject company at the end of the month immediately preceding the date of publication of the research report.

PL or its research analysts or its associates or his relatives do not have any material conflict of interest at the time of publication of the research report.

PL or its associates might have received compensation from the subject company in the past twelve months.

PL or its associates might have managed or co-managed public offering of securities for the subject company in the past twelve months or mandated by the subject company for any other assignment in the past twelve months.

PL or its associates might have received any compensation for investment banking or merchant banking or brokerage services from the subject company in the past twelve months.

PL or its associates might have received any compensation for products or services other than investment banking or merchant banking or brokerage services from the subject company in the past twelve months PL or its associates might have received any compensation or other benefits from the subject company or third party in connection with the research report.

PL encourages independence in research report preparation and strives to minimize conflict in preparation of research report. PL or its analysts did not receive any compensation or other benefits from the subject Company or third party in connection with the preparation of the research report. PL or its Research Analysts do not have any material conflict of interest at the time of publication of this report.

It is confirmed that Mrs.Vaishali Parekh B.com, Research Analyst of this report has not received any compensation from the companies mentioned in the report in the preceding twelve months compensation of our Research Analysts is not based on any specific merchant banking, investment banking or brokerage service transactions.

The Research analysts for this report certifies that all of the views expressed in this report accurately reflect his or her personal views about the subject company or companies and its or their securities, and no part of his or her compensation was, is or will be, directly or indirectly related to specific recommendations or views expressed in this report.

The research analysts for this report has not served as an officer, director or employee of the subject company PL or its research analysts have not engaged in market making activity for the subject company

Our sales people, traders, and other professionals or affiliates may provide oral or written market commentary or trading strategies to our clients that reflect opinions that are contrary to the opinions expressed herein, and our proprietary trading and investing businesses may make investment decisions that are inconsistent with the recommendations expressed herein. In reviewing these materials, you should be aware that any or all of the foregoing, among other things, may give rise to real or potential conflicts of interest.

PL and its associates, their directors and employees may (a) from time to time, have a long or short position in, and buy or sell the securities of the subject company or (b) be engaged in any other transaction involving such securities and earn brokerage or other compensation or act as a market maker in the financial instruments of the subject company or act as an advisor or lender/borrower to the subject company or may have any other potential conflict of interests with respect to any recommendation and other related information and opinions.