

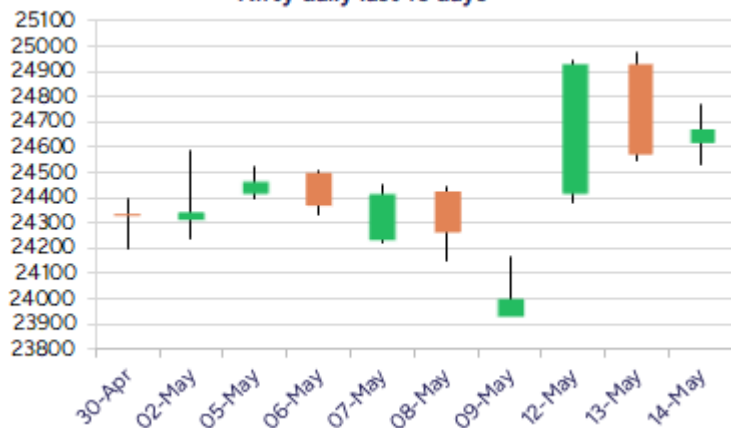
Date: 15<sup>th</sup> May 2025

\* Sensex 81330.56 + 182.34

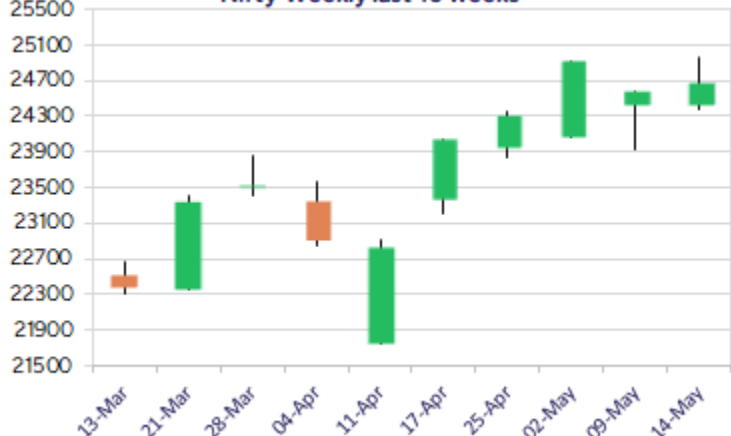
\* Nifty 24666.90 + 88.55

\* Bank Nifty 54801.30 - 139.55

Nifty daily last 10 days



Nifty Weekly last 10 weeks



\*Blue candle → Close rate > Open rate \* Red candle → Close rate < Open rate

## Market Preview

### Nifty sustains above 24600 zone

Nifty after a slightly volatile session witnessed a decent recovery in the second half to move past the 24600 level and closed in the green. BankNifty has been rangebound for quite some time sustaining above the 54000 zone as of now. The market breadth was strong with the advance decline indicating a ratio of almost 4:1 at close.

## Market Forecast

### Nifty daily range 24500-24800

Nifty, has been volatile during the intraday session and after cooling off to some extent in the previous session has taken support near 24550 zone, to indicate a revival with overall bias maintained positive to close in the green near 24650 level. As mentioned earlier, the index would have the near-term support zone of 24450-24500 band where it can find some consolidation and once a decisive breach above 24800 zone is confirmed, then can target of 25200 and 25400 levels in the coming days.

BankNifty, has been gripped between a narrow range of 55500 and 54000 levels for quite some time with consolidation witnessed and would need a decisive breach above this band to confirm a positive trigger and anticipate for fresh upside move in the coming days. On the downside, as mentioned earlier, the important support zone of 54000 needs to be sustained to maintain the overall bias intact.

The support for the day is seen at 24500 levels while the resistance is seen at 24800 levels. BankNifty would have the daily range of 54400-55400 levels.

Indices	Period	Closing	% Chng	Trend	Reversal	2 Sup	1 Sup	Pivot	1 Res	2 Res
Nifty	Daily	24666.90	0.36%	-2	24703.20	24425	24546	24657	24778	24889
	Weekly	24008.00	-1.39%	8	23736.90	23566	23787	24157	24378	24747
	Monthly	24334.20	3.46%	-7	24274.15	20798	22566	23512	25279	26225
Bank Nifty	Daily	54801.30	-0.25%	-2	54891.50	54116	54459	54834	55176	55551
	Weekly	53595.25	-2.76%	-1	53943.20	52279	52937	54141	54799	56004
	Monthly	55087.15	6.83%	1	53311.35	46522	50805	53451	57733	60379
Sensex	Daily	81330.56	0.22%	-2	81854.30	80529	80930	81311	81712	82093
	Weekly	79454.47	-1.30%	8	78277.25	77743	78599	79824	80680	81905
	Monthly	80242.24	3.65%	-7	80009.00	68245	74243	77449	83447	86653

## Daily Trend turned Up

Scrip Name	LCP	Curr Trnd	Reversal
APLLTD	907.65	-2	900.3
BIOCON	338.2	-3	335.45
CESC	167.81	-1	165.95
DEEPAKNTR	1980.1	-1	1951.9
DIVISLAB	6215.5	-4	6096.3
FORTIS	691.85	-4	676.45
GLAXO	2878.8	-8	2791.05
HINDPETRO	396.6	-6	394.5
IEX	197.25	-6	195.2
MCX	6202.5	-9	6097.45
MFSL	1338.2	-7	1293
OIL	418.85	-1	409.15

\* Trends turned Up after a significant period

## Daily Trend turned Down

Scrip Name	LCP	Curr Trnd	Reversal
AUBANK	690.5	2	697.65
BRITANNIA	5484	3	5497.85
CIPLA	1494.8	1	1509
DABUR	468.95	2	472.15
INDIAMART	2283.8	2	2303.25
JUBLFOOD	693.8	1	697.4
KOTMAHBNK	2092.4	2	2100.9
KSCL	1352.5	2	1439.3
METROPOLIS	1614.5	2	1693.6
MOTHERSUMI	141.09	2	143.25
PAGEIND	46420	2	46518.25
RECLTD	389.5	2	397.8

\* Trends turned Down after a significant period

## Gainers - Losers ( Nifty 500 Stocks )

## Gainers

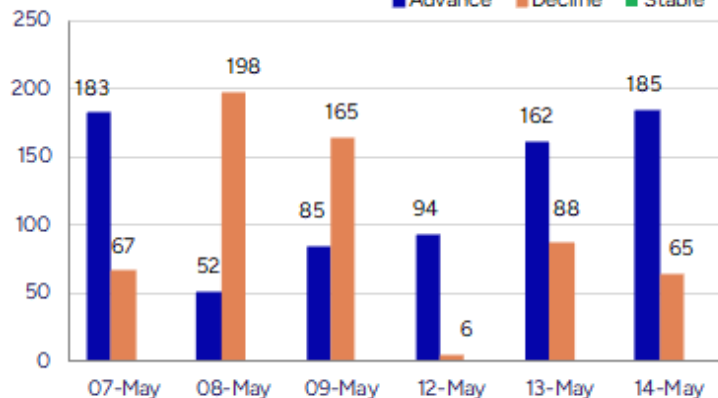
Company Name	Last Price	% Gain	Volume
Indo Rama Synth	46.47	19.98	1642939
AMJ Land	56.92	19.98	230622
Kanpur Plast	175.16	19.93	1212330
Mason Infratech	127.75	19.28	580000
Amiable	89	17.49	3200
IVP	195.9	17.38	229437
HCL Info	15.54	17.11	1508685

## Losers

Company Name	Last Price	% Loss	Volume
Kaveri Seed	1352.5	-8.73	484414
Gajanand Intl	14.05	-8.47	6000
Aatmaj Health	18.6	-7.69	14000
Syrma SGS	526	-6.8	3887957
Albert David	825.9	-6.57	28935
Tridhya Tech	23.5	-6	18000
Goyal Salt	172.8	-5.83	24000

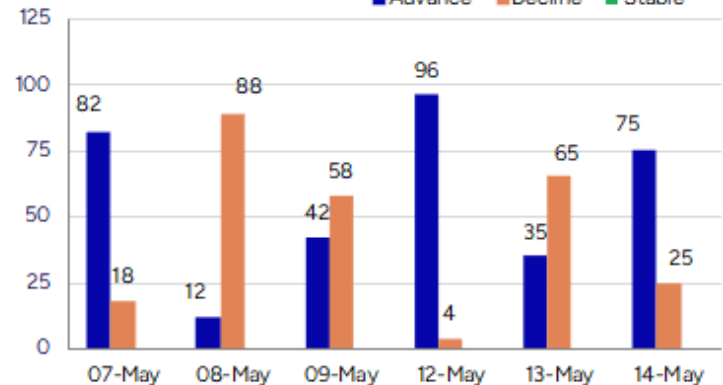
## Nifty Smallcap-250 stocks

■ Advance ■ Decline ■ Stable



## Nifty Midcap-100 stocks

■ Advance ■ Decline ■ Stable



## Nifty Daily chart with RSI indicator



## BankNifty Daily chart with RSI indicator



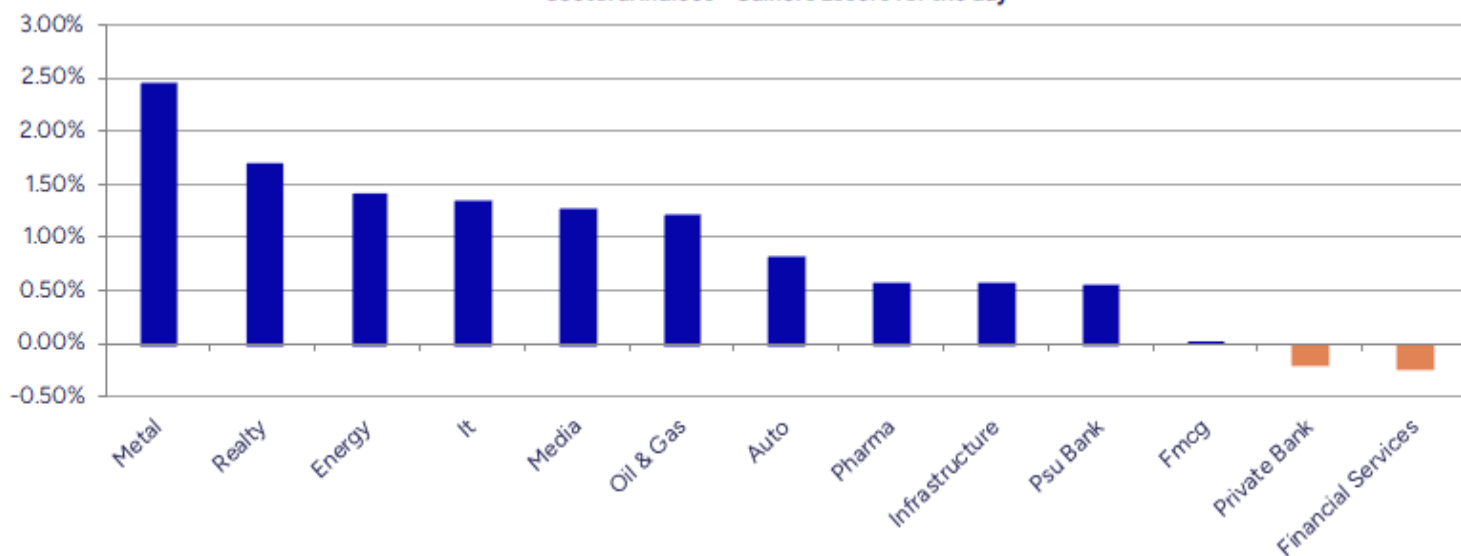
Breakouts - Cross above 200 DMA			
Company Name	LCP	Change %	200 DMA
Mishra Dhatu Ni	392.4	14.11	343.88
Indo Rama Synth	46.47	10.72	41.97
Amiable Logisti	89	9.15	81.54
Mangalam Organ	495.65	7.45	461.28
AMJ Land	56.92	5.84	53.78
Cochin Shipyard	1699.4	5.30	1613.92
PTC Industries	14005	5.20	13313.27
DCX Systems	329.35	5.20	313.06
Parsvnath	21.11	4.56	20.19
Vardhman Poly	11.81	4.42	11.31
Vardhman Steels	258.58	4.25	248.03
Tarapur Trans	30.69	4.10	29.48
IDBI Bank	85.61	3.73	82.53
Nitin Spinners	409	3.72	394.34
Nuvoco Vistas	353.1	3.70	340.51
Cords Cable Ind	201.59	3.68	194.43
Shanti Overseas	15.87	3.25	15.37
Sequent Scienti	174.34	3.10	169.09

\* Stocks crossing above its Simple Moving Average (200DMA)

Breakdown - Cross below 200 DMA			
Company Name	LCP	Change %	200 DMA
Poly Medicure	2352	-2.68	2416.65
Man Industries	320.9	-1.89	327.09
Cipla	1494.8	-1.64	1519.72
Patanjali Foods	1783.3	-1.51	1810.66
Dollex Agrotech	39	-0.81	39.32
Panama Petro	375.95	-0.77	378.85
ILandFS Engg	39	-0.69	39.27
Kirloskar Bros	1882.1	-0.20	1885.89
Sagardeep Alloy	29.13	-0.10	29.16
TMB	447.35	-0.10	447.82

\* Stocks crossing below its Simple Moving Average (200DMA)

Sectoral Indices - Gainers Losers for the day



Stocks witnessing a volume surge as compared to their 5 day average volume

Watch out for the stocks that have seen a huge spurt in its share price over the last three days

Volume Shockers - NSE					
Company name	LCP	% Chg	Volume	Avg Vol *	% Chg
Ushanti Colour	56	5.66	224000	2800	7900
Aether Ind.	748.85	-2.21	3343949	57781	5687
Paras Defence	1467.7	3.44	3887559	74764	5100
Sky Gold	335.05	5	1102344	25989	4142
Kanpur Plast	175.16	19.93	1212330	30165	3919
Mahickra Chemic	114.5	-4.18	78000	1950	3900
Dynamic Cables	847.75	15.65	2436052	66776	3548
Kirloskar Ind	3164.8	5.77	112652	3456	3160
HEG	488.2	5.76	2498440	80062	3021
Krishna Institu	640.05	-2.88	1578090	59456	2554
Inspirisys Solu	114.48	3.02	447510	17526	2453
Ganesh Housing	978.5	-2.65	1615991	65943	2351
Jai Balaji Ind	110.34	-0.5	1291094	54390	2274
Sumit Woods	100.53	0.98	325811	14456	2154
Diamond Power	94.86	1.03	147908	6800	2075
Garden Reach Sh	2188	14.27	17288943	871209	1884
Premier Explo	446.4	-2.17	1486101	77069	1828
OM Infra	139.93	12.23	2247713	118030	1804
Premier	3.06	-5.26	41978	2273	1746
Cochin Shipyard	1699.4	7.76	21387654	1166511	1733

\* the Average Volume of last 5 days

Price Shockers - NSE				
Company name	LCP	Prv Close	% Chg	Volume
Dynamic Cables	847.75	546.8	55.04	2436052
Inspirisys Solu	114.48	77.17	48.35	447510
Ginni Filaments	38.49	27.62	39.36	1032107
Kanpur Plast	175.16	133.04	31.66	1212375
Aarti Surfactan	564.2	429.05	31.5	17155
Mangalam Organ	495.65	377.1	31.44	29340
Linc	144.48	110.19	31.12	630960
Birla Corp	1378.4	1057.4	30.36	584544
Suven Life Sci	184.11	142.45	29.25	6592108
Ndr Auto Compon	943.8	737	28.06	212093
K.P. Energy	438.5	342.55	28.01	2536884
AMJ Land	56.92	44.67	27.42	230622
IFGL Refractory	468.7	368.35	27.24	62350
Nelcast	105.24	82.81	27.09	394536
Hilton Metal	67.31	53.2	26.52	336647
Zodiac Energy	416.9	330.5	26.14	190922
KPIGREEN	437.05	348.35	25.46	6199127
Indo Rama Synth	46.47	37.13	25.15	1642939
Anmol India	19.17	15.39	24.56	354210
HCL Info	15.54	12.5	24.32	1508686

\* the % price rise of the last 3 days



Symbol	LTP	Chng	% Chng	Volume (lacs)	Turnover (crs.)	52w High	Diff with 52w H	52w Low	Diff with 52w L	365 days % chng	30 days % chng
NIFTY 50	24666.90	88.55	0.36%	3454.79	25584.59	26277.35	6.13%	21281.45	15.91%	7.66%	11.19%
ADANIENT	2463.00	21.80	0.89%	7.74	190.89	3743.90	34.21%	2025.00	21.63%	5.16%	-15.22%
ADANIPTS	1377.00	7.80	0.57%	15.57	213.94	1621.40	15.07%	995.65	38.30%	17.57%	4.81%
APOLLOHOSP	6918.00	0.50	0.01%	3.25	224.69	7545.35	8.31%	5693.20	21.51%	2.01%	18.65%
ASIANPAINT	2286.00	-38.60	-1.66%	15.50	354.60	3394.90	32.66%	2124.75	7.59%	-2.88%	-19.26%
AXISBANK	1195.00	1.40	0.12%	40.85	487.75	1339.65	10.80%	933.50	28.01%	11.66%	5.44%
BAJAJ-AUTO	8095.50	32.50	0.40%	2.26	183.20	12774.00	36.63%	7089.35	14.19%	3.79%	-10.33%
BAJAJFINSV	20199.00	1.70	0.08%	16.71	337.84	2135.00	5.39%	1419.05	42.34%	3.69%	27.69%
BAJFINANCE	9076.00	34.00	0.38%	7.59	688.59	9660.00	6.05%	6375.70	42.35%	1.36%	34.58%
BEL	344.50	8.75	2.61%	436.83	1493.48	346.00	0.43%	221.00	55.88%	17.81%	49.39%
BHARTIARTL	1837.90	17.30	0.95%	74.02	1364.40	1917.00	4.13%	1219.05	50.76%	3.64%	41.58%
CIPLA	14999.00	-20.20	-1.33%	34.17	510.91	1702.05	11.88%	1335.00	12.35%	3.90%	7.45%
COALINDIA	403.75	8.60	2.18%	68.23	273.95	543.55	25.72%	349.25	15.60%	0.78%	-11.00%
DRREDDY	1220.30	13.20	1.09%	11.97	145.42	1421.49	14.15%	1020.00	19.64%	8.80%	-79.57%
EICHERMOT	5447.00	28.00	0.52%	3.16	171.67	5906.50	7.78%	4253.85	28.05%	1.27%	16.35%
GRASIM	2739.00	30.30	1.12%	3.31	90.23	2877.75	4.82%	2171.60	26.13%	2.17%	13.56%
HCLTECH	1641.30	21.70	1.34%	15.69	256.20	2012.20	18.43%	1235.00	32.90%	16.47%	23.36%
HDFCBANK	1913.50	-9.10	-0.47%	77.23	1478.69	1978.90	3.30%	1430.30	33.78%	6.41%	32.11%
HDFCLIFE	741.00	5.95	0.81%	20.59	153.07	761.20	2.65%	511.40	44.90%	7.22%	31.34%
HEROMOTOCO	4050.00	-13.60	-0.33%	12.00	484.30	6246.25	35.16%	3344.00	21.11%	10.85%	-16.82%
HINDALCO	649.50	14.75	2.32%	48.19	312.11	772.65	15.94%	546.45	18.86%	5.74%	0.20%
HINDUNILVR	2351.70	-8.30	-0.35%	15.68	368.25	3035.00	22.51%	2136.00	10.10%	-0.26%	-0.03%
ICICIBANK	1427.40	-3.20	-0.22%	80.27	1146.13	1453.00	1.76%	1051.05	35.81%	9.07%	26.83%
INDUSINDBK	781.95	11.85	1.54%	91.64	710.15	1550.00	49.55%	606.00	29.03%	11.69%	-45.17%
INFY	1592.80	24.20	1.54%	48.70	773.73	2006.45	20.62%	1307.00	21.87%	11.29%	10.20%
ITC	429.05	1.15	0.27%	95.57	409.67	528.50	18.82%	390.15	9.97%	1.51%	-0.91%
JIOFIN	267.80	0.40	0.15%	132.56	354.64	376.00	28.78%	198.65	34.81%	16.25%	-21.66%
JSWSTEEL	989.70	-0.20	-0.02%	16.50	164.34	1074.90	7.93%	823.80	20.14%	-0.04%	15.02%
KOTAKBANK	2091.90	-23.70	-1.12%	21.38	448.67	2301.90	9.12%	1602.45	30.54%	0.21%	28.91%
LT	3576.00	9.00	0.25%	24.40	874.85	3963.50	9.78%	2965.30	20.59%	14.48%	8.29%
M&M	3103.10	49.30	1.61%	22.36	691.56	3270.95	5.13%	2160.00	43.66%	18.35%	39.81%
MARUTI	12700.00	218.00	1.75%	3.06	385.95	13680.00	7.16%	10725.00	18.41%	7.61%	-1.51%
NESTLEIND	2373.00	2.80	0.12%	6.02	142.32	2778.00	14.58%	2110.00	12.46%	0.37%	-5.80%
NTPC	339.50	-2.00	-0.59%	224.86	764.62	448.45	24.29%	292.80	15.95%	-5.17%	-2.68%
ONGC	246.04	4.88	2.02%	82.34	201.89	345.00	28.68%	205.00	20.02%	4.68%	-9.64%
POWERGRID	296.30	-2.15	-0.72%	103.59	307.22	366.25	19.10%	247.30	19.81%	-1.86%	-2.64%
RELIANCE	1425.20	9.50	0.67%	55.70	792.80	1608.80	11.41%	1114.85	27.84%	16.14%	-49.54%
SBILIFE	1757.80	17.80	1.02%	6.03	105.66	1936.00	9.20%	1307.70	34.42%	14.33%	22.10%
SBIN	802.40	0.65	0.08%	92.82	743.91	912.00	12.02%	680.00	18.00%	6.35%	-0.87%
SHRIRAMFIN	651.00	17.40	2.75%	93.22	605.57	730.45	10.88%	438.60	48.43%	-0.81%	-72.47%
SUNPHARMA	1710.20	10.20	0.60%	16.39	279.24	1960.35	12.76%	1377.20	24.18%	0.74%	11.47%
TATACONSUM	1120.50	1.90	0.17%	13.87	155.50	1250.10	10.37%	882.90	26.91%	1.89%	1.97%
TATAMOTORS	700.20	-7.50	-1.06%	315.05	2194.41	1179.00	40.61%	535.75	30.70%	18.93%	-26.26%
TATASTEEL	155.30	5.87	3.93%	600.01	932.95	184.60	15.87%	122.62	26.65%	12.00%	-8.80%
TCS	3547.00	32.00	0.91%	21.19	750.94	4592.25	22.76%	3056.05	16.06%	8.77%	-10.96%
TECHM	1607.40	34.90	2.22%	23.55	375.98	1807.70	11.08%	1193.65	34.66%	22.64%	24.60%
TITAN	3585.20	22.00	0.62%	5.88	210.96	3867.00	7.29%	2925.00	22.57%	10.15%	9.51%
TRENT	5360.00	33.50	0.63%	5.57	299.08	8345.00	35.77%	4196.00	27.74%	11.42%	19.28%
ULTRACEMCO	11692.00	31.00	0.27%	1.79	209.45	12339.00	5.24%	9427.10	24.03%	1.38%	22.09%
WIPRO	253.20	1.63	0.65%	88.38	223.03	324.60	22.00%	208.50	21.44%	4.93%	-44.34%
ETERNAL	236.27	4.62	1.99%	231.56	545.19	304.70	22.46%	146.30	61.50%	#VALUE!	#VALUE!

## Disclaimer / Disclosures

### ANALYST CERTIFICATION

I, Mrs. Vaishali Parekh B.com, Research Analyst, author and the name subscribed to this report, hereby certify that all of the views expressed in this research report accurately reflect our views about the subject issuer(s) or securities. We also certify that no part of our compensation was, is, or will be directly or indirectly related to the specific recommendation(s) or view(s) in this report.

Terms & conditions and other disclosures:

Prabhudas Lilladher Pvt. Ltd, Mumbai, India (hereinafter referred to as "PL") is engaged in the business of Stock Broking, Portfolio Manager, Depository Participant and distribution for third party financial products. PL is a subsidiary of Prabhudas Lilladher Advisory Services Pvt Ltd. which has its various subsidiaries engaged in business of commodity broking, investment banking, financial services (margin funding) and distribution of third party financial/other products, details in respect of which are available at [www.plindia.com](http://www.plindia.com)

This document has been prepared by the Research Division of PL and is meant for use by the recipient only as information and is not for circulation. This document is not to be reported or copied or made available to others without prior permission of PL. It should not be considered or taken as an offer to sell or a solicitation to buy or sell any security.

The information contained in this report has been obtained from sources that are considered to be reliable. However, PL has not independently verified the accuracy or completeness of the same. Neither PL nor any of its affiliates, its directors or its employees accepts any responsibility of whatsoever nature for the information, statements and opinion given, made available or expressed herein or for any omission therein.

Recipients of this report should be aware that past performance is not necessarily a guide to future performance and value of investments can go down as well. The suitability or otherwise of any investments will depend upon the recipient's particular circumstances and, in case of doubt, advice should be sought from an independent expert/advisor.

Either PL or its affiliates or its directors or its employees or its representatives or its clients or their relatives may have position(s), make market, act as principal or engage in transactions of securities of companies referred to in this report and they may have used the research material prior to publication.

PL may from time to time solicit or perform investment banking or other services for any company mentioned in this document.

PL is registered as Research Analyst under Securities and Exchange Board of India (Research Analysts) Regulations, 2014 PL submits that no material disciplinary action has been taken on us by any Regulatory Authority impacting Equity Research Analysis activities.

PL or its research analysts or its associates or his relatives do not have any financial interest in the subject company.

PL or its research analysts or its associates or his relatives do not have actual/beneficial ownership of one per cent or more securities of the subject company at the end of the month immediately preceding the date of publication of the research report.

PL or its research analysts or its associates or his relatives do not have any material conflict of interest at the time of publication of the research report.

PL or its associates might have received compensation from the subject company in the past twelve months.

PL or its associates might have managed or co-managed public offering of securities for the subject company in the past twelve months or mandated by the subject company for any other assignment in the past twelve months.

PL or its associates might have received any compensation for investment banking or merchant banking or brokerage services from the subject company in the past twelve months.

PL or its associates might have received any compensation for products or services other than investment banking or merchant banking or brokerage services from the subject company in the past twelve months PL or its associates might have received any compensation or other benefits from the subject company or third party in connection with the research report.

PL encourages independence in research report preparation and strives to minimize conflict in preparation of research report. PL or its analysts did not receive any compensation or other benefits from the subject Company or third party in connection with the preparation of the research report. PL or its Research Analysts do not have any material conflict of interest at the time of publication of this report.

It is confirmed that Mrs.Vaishali Parekh B.com, Research Analyst of this report has not received any compensation from the companies mentioned in the report in the preceding twelve months compensation of our Research Analysts is not based on any specific merchant banking, investment banking or brokerage service transactions.

The Research analysts for this report certifies that all of the views expressed in this report accurately reflect his or her personal views about the subject company or companies and its or their securities, and no part of his or her compensation was, is or will be, directly or indirectly related to specific recommendations or views expressed in this report.

The research analysts for this report has not served as an officer, director or employee of the subject company PL or its research analysts have not engaged in market making activity for the subject company

Our sales people, traders, and other professionals or affiliates may provide oral or written market commentary or trading strategies to our clients that reflect opinions that are contrary to the opinions expressed herein, and our proprietary trading and investing businesses may make investment decisions that are inconsistent with the recommendations expressed herein. In reviewing these materials, you should be aware that any or all of the foregoing, among other things, may give rise to real or potential conflicts of interest.

PL and its associates, their directors and employees may (a) from time to time, have a long or short position in, and buy or sell the securities of the subject company or (b) be engaged in any other transaction involving such securities and earn brokerage or other compensation or act as a market maker in the financial instruments of the subject company or act as an advisor or lender/borrower to the subject company or may have any other potential conflict of interests with respect to any recommendation and other related information and opinions.