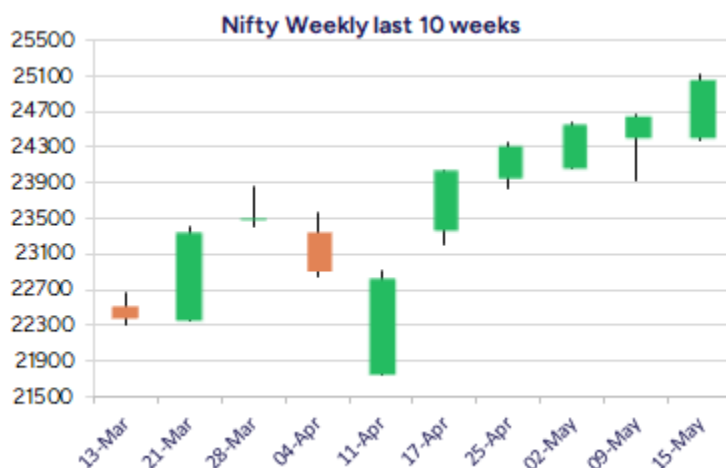
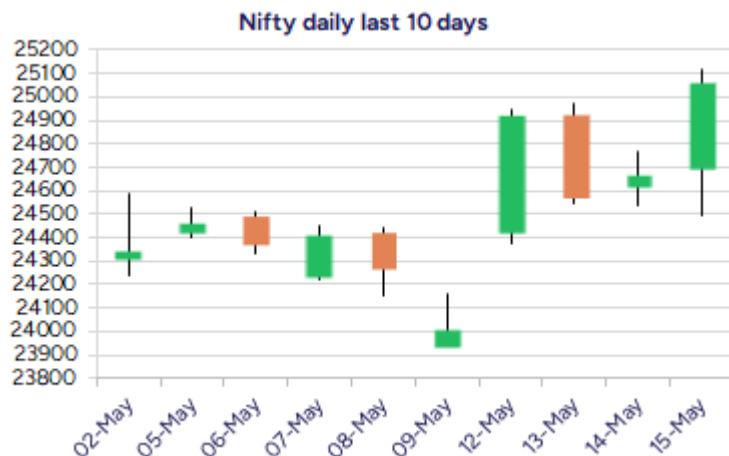


Date: 16th May 2025

* Sensex 82530.74 + 1200.18

* Nifty 25062.10 + 395.20

* Bank Nifty 55355.60 + 554.30



*Blue candle → Close rate > Open rate * Red candle → Close rate < Open rate

Market Preview

Nifty conquers 25000 zone

Nifty after witnessing a robust move during the intraday session amid high fluctuations, breached above the 25000 zone with bias and sentiment getting stronger. BankNifty gained during the session with volatility witnessed and the final hours pulled the index to close near the 55400 zone. The market breadth was once again strong with the advance decline indicating a ratio of 3:1 at close.

Market Forecast

Nifty daily range 24900-25200

Nifty, amid high volatility witnessed a robust move to strongly breach above the 25000 zone with a bullish candle formation on the daily chart to strengthen the trend anticipating for further rise in the coming days. As mentioned earlier, the index has triggered a breakout and has opened the gates for fresh upside targets of 25400 and 25800 levels with major support now positioned near 24500 level which needs to be sustained to maintain the overall bias intact.

BankNifty, witnessed a positive move during the intraday session, however, yet needs to break above the important hurdle of 55500 level and thereafter expect for further upward move for targets of 56600 and 58500 levels in the coming days. On the downside, as mentioned earlier, the important support zone is lying near the 54000 zone which needs to be sustained to maintain the overall bias intact.

The support for the day is seen at 24900 levels while the resistance is seen at 25200 levels. BankNifty would have the daily range of 54800-56000 levels.

Indices	Period	Closing	% Chng	Trend	Reversal	2 Sup	1 Sup	Pivot	1 Res	2 Res
Nifty	Daily	25062.10	1.60%	1	24870.30	24269	24666	24891	25287	25513
	Weekly	24008.00	-1.39%	8	23736.90	23566	23787	24157	24378	24747
	Monthly	24334.20	3.46%	-7	24274.15	20798	22566	23512	25279	26225
Bank Nifty	Daily	55355.60	1.01%	1	55090.55	54048	54702	55096	55750	56144
	Weekly	53595.25	-2.76%	-1	53943.20	52279	52937	54141	54799	56004
	Monthly	55087.15	6.83%	1	53311.35	46522	50805	53451	57733	60379
Sensex	Daily	82530.74	1.48%	1	82136.05	80048	81289	82004	83245	83960
	Weekly	79454.47	-1.30%	8	78277.25	77743	78599	79824	80680	81905
	Monthly	80242.24	3.65%	-7	80009.00	68245	74243	77449	83447	86653

Daily Trend turned Up			
Scrip Name	LCP	Curr Trnd	Reversal
APOLLOHOSP	7072.5	-13	6913.1
ASIANPAINT	2329.9	-13	2310.05
BAJAJFINSV	2041.9	-2	2024.35
BPCL	317	-7	312.1
CIPLA	1502.2	-1	1501.65
DIXON	16433	-10	16028.9
HUDCO	221.72	-1	216.4
INDIAMART	2330.5	-1	2308
IOC.	145	-5	143.35
KOTMAHBNK	2106.4	-1	2101.35
MARUTI	12952	-5	12684.7
MOTHERSUMI	143.69	-1	143.2

* Trends turned Up after a significant period

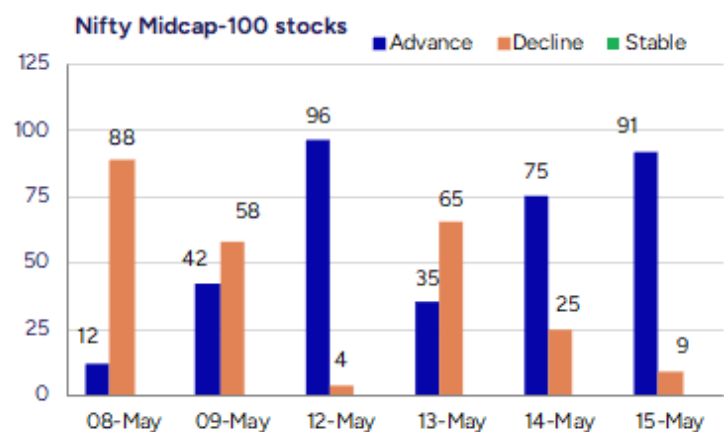
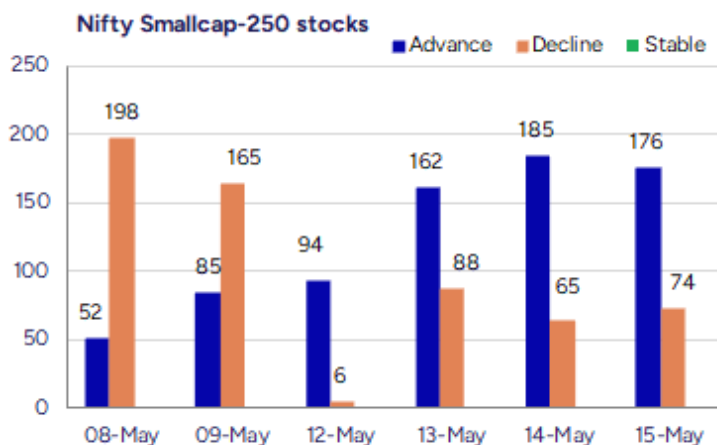
Daily Trend turned Up			
Scrip Name	LCP	Curr Trnd	Reversal
NTPC	341.95	-1	338
PAGEIND	46940	-1	46470.65
PIIND	3691.3	-2	3666.45
RECLTD	394.35	-1	392.35
RELIANCE	1454.2	-6	1445.1
SBILIFE	1784.6	-7	1757.1
SUNPHARMA	1740.1	-7	1734.8
TATACONSUM	1147.2	-9	1141.4
TVSMOTOR	2789.8	-5	2759.05

* Trends turned Up after a significant period

Gainers - Losers (Nifty 500 Stocks)

Gainers			
Company Name	Last Price	% Gain	Volume
RUDRABHISHEK	207.9	20	234115
Nelcast	126.28	19.99	353363
HCL Info	18.64	19.95	9271957
Innomet Advance	165.5	19.93	162000
Mahickra Chemic	137.1	19.74	168000
Motor and Gen F	29.33	19.47	724503
Intense Tech	113.1	18.02	1291404

Losers			
Company Name	Last Price	% Loss	Volume
Wendt	8702.5	-16.8	159709
SOLARA ACTIVE P	518.6	-9.9	582001
Muthoot Cap	269.25	-7.59	289706
DAM Capital Adv	204.08	-7.51	2954576
Micropro Soft	23.5	-7.48	16000
Hitachi Energy	15570	-6.96	232175
Hikal	392.4	-6.9	1391336



Nifty Daily chart with RSI indicator



BankNifty Daily chart with RSI indicator



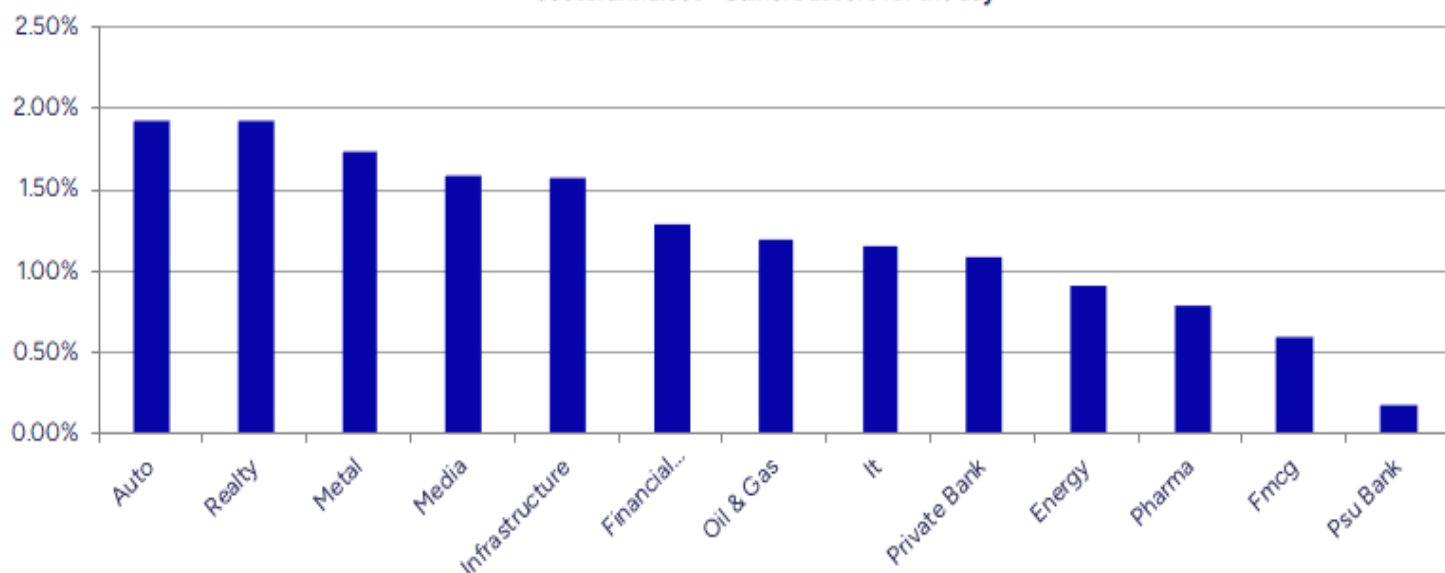
Breakouts - Cross above 200 DMA			
Company Name	LCP	Change %	200 DMA
HCL Info	18.64	18.73	15.7
Tilaknagar Ind	345.4	11.20	310.61
Foseco India	4621.3	10.12	4196.6
Precot	538.05	9.62	490.81
Nelcast	126.28	8.56	116.32
eClerx Services	3156	6.65	2959.34
Hind Rectifiers	1106.15	6.04	1043.11
Shri Rama Multi	37.02	4.69	35.36
HEC Infra Proje	116.69	4.57	111.59
Linde India	7154	4.03	6877.13
Menon Bearings	120.25	3.89	115.75
MOIL	364.8	3.70	351.78
ILandFS Engg	40.68	3.46	39.32
Asian Energy	343.05	3.40	331.76
Aksh Optifibre	10.05	3.18	9.74
Eurotex	14.29	2.88	13.89
SML Isuzu	1680.3	2.76	1635.18
LG Balakrishnan	1322.2	2.42	1290.96

* Stocks crossing above its Simple Moving Average (200DMA)

Breakdown - Cross below 200 DMA			
Company Name	LCP	Change %	200 DMA
Mason Infratech	120.7	-4.76	126.73
Thangamayil	1911.9	-4.25	1996.71
IVP	189.12	-3.19	195.35
Krishival Foods	247	-2.94	254.49
Karnataka Bank	199.53	-2.64	204.94
KSB Pumps	779.75	-1.67	792.97
Tarapur Trans	29.15	-1.45	29.58
AYM Syntex	209.76	-1.35	212.62
Hind Motors	26.24	-1.24	26.57
Mukta Arts	79.43	-0.91	80.16
Medico Remedies	52.86	-0.83	53.3
South West Pinn	123.82	-0.79	124.8
Inspirisys Solu	110.02	-0.56	110.64
Rallis India	286.56	-0.50	287.99
APS India	462.85	-0.48	465.09
Indo Count	339.75	-0.47	341.36
TT	13.47	-0.30	13.51
Ramco System	385.8	-0.21	386.63

* Stocks crossing below its Simple Moving Average (200DMA)

Sectoral Indices - Gainers Losers for the day



Stocks witnessing a volume surge as compared to their 5 day average volume

Watch out for the stocks that have seen a huge spurt in its share price over the last three days

Volume Shockers - NSE					
Company name	LCP	% Chg	Volume	Avg Vol *	% Chg
Mahickra Chemic	136.25	19	161250	1950	8169
Remsons Ind	137.39	14.47	1596680	21094	7469
Diamond Power	94.15	-0.75	323860	6800	4662
Sky Gold	340.4	1.6	1140497	25989	4288
Intense Tech	111.35	16.2	1153265	35697	3131
Laxmi Goldorna	517.35	-2.54	33776	1094	2988
Paras Defence	1518.6	3.47	2255166	74764	2916
HCL Info	18.64	19.95	9182013	324996	2725
Kirloskar Oil	854.5	16.23	7690268	281357	2633
Precot	538.95	12.09	100690	3752	2584
Kajaria Ceramic	932.05	7.61	2027692	84513	2299
BEW Engineering	204.6	1.72	25500	1125	2167
Motor and Gen F	28.88	17.64	681767	30733	2118
Foseco India	4609.1	13.02	32809	1693	1838
AMJ Land	58.18	2.21	706808	37825	1769
Ushanti Colour	55	-1.79	52000	2800	1757
Aether Ind.	752	0.42	1042310	57781	1704
JBM Auto	715	4.55	3236769	180877	1689
Praxis Home Ret	10.56	4.97	1050141	62438	1582
Kanpur Plast	174.6	-0.32	492766	30165	1534

* the Average Volume of last 5 days

Price Shockers - NSE				
Company name	LCP	Prv Close	% Chg	Volume
HCL Info	18.64	13.25	40.68	9271957
Nelcast	126.28	89.99	40.33	353363
Dynamic Cables	815.75	610.9	33.53	312538
Mangalam Organ	545.2	414.8	31.44	75104
Kanpur Plast	178.13	139.7	27.51	555107
Aarti Surfactan	592.4	466.35	27.03	91895
CCCL	18.1	14.31	26.48	788753
Orient Paper	30.72	24.32	26.32	7219929
Apar Ind	7941	6300.5	26.04	670451
Vascon Engineer	50.65	40.66	24.57	13871340
Innomet Advance	165.5	133	24.44	162000
ITD Cementation	674.6	543.35	24.16	2900046
Garden Reach Sh	2258.8	1821.3	24.02	10833669
Kirloskar Oil	862.3	699.45	23.28	8435435
Linc	143.66	116.93	22.86	169798
Intense Tech	113.1	92.1	22.8	1291404
OBSC Perfection	199.5	162.95	22.43	290400
eClerx Services	3156	2591.2	21.8	1829464
AMJ Land	57.42	47.22	21.6	749879
Mishra Dhatu	399.2	329.85	21.02	4129197

* the % price rise of the last 3 days

Symbol	LTP	Chng	% Chng	Volume (lacs)	Turnover (crs.)	52w High	Diff with 52w H	52w Low	Diff with 52w L	365 days % chng	30 days % chng
NIFTY 50	25062.10	395.20	1.60%	5007.64	44143.29	26277.35	4.62%	21281.45	17.77%	8.05%	11.02%
ADANIET	2519.00	57.10	2.32%	15.55	388.59	3743.90	32.72%	2025.00	24.40%	6.05%	-18.95%
ADANIPTS	1401.50	29.70	2.17%	37.06	517.16	1621.40	13.56%	995.65	40.76%	17.80%	3.05%
APOLLOHOSP	7086.50	170.00	2.46%	6.56	456.45	7545.35	6.08%	5693.20	24.47%	2.00%	17.97%
ASIANPAINT	2331.40	49.10	2.15%	16.75	386.35	3394.90	31.33%	2124.75	9.73%	-4.65%	-20.37%
AXISBANK	1206.80	11.30	0.95%	67.06	807.11	1339.65	9.92%	933.50	29.28%	11.84%	6.47%
BAJAJ-AUTO	8335.00	232.50	2.87%	4.98	410.37	12774.00	34.75%	7089.35	17.57%	4.29%	-10.62%
BAJAJFINSV	2042.00	21.60	1.07%	26.40	536.26	2135.00	4.36%	1419.05	43.90%	3.81%	28.16%
BAJFINANCE	9182.00	101.00	1.11%	10.38	947.36	9660.00	4.95%	6375.70	44.02%	1.79%	36.03%
BEL	350.00	5.65	1.64%	359.50	1246.50	351.00	0.28%	225.75	55.04%	20.82%	49.10%
BHARTIARTL	1863.10	28.90	1.58%	87.88	1625.40	1917.00	2.81%	1219.05	52.83%	4.42%	42.82%
CIPLA	1500.90	6.10	0.41%	39.18	584.72	1702.05	11.82%	1335.00	12.43%	2.17%	10.13%
COALINDIA	403.50	0.40	0.10%	105.12	423.73	543.55	25.77%	349.25	15.53%	2.81%	-10.16%
DRREDDY	1231.00	11.00	0.90%	20.54	251.33	1421.49	13.40%	1020.00	20.69%	9.96%	-79.21%
EICHERMOT	5473.50	27.00	0.50%	19.30	1053.31	5906.50	7.33%	4253.85	28.67%	1.79%	15.13%
GRASIM	2829.50	92.30	3.37%	13.53	377.71	2877.75	1.68%	2171.60	30.30%	3.24%	15.39%
HCLTECH	1692.00	54.30	3.32%	49.62	829.32	2012.20	15.91%	1235.00	37.00%	17.77%	23.97%
HDFCBANK	1933.80	23.20	1.21%	161.19	3099.69	1978.90	2.28%	1435.50	34.71%	5.75%	30.78%
HDFCLIFE	748.65	6.95	0.94%	33.39	248.77	761.20	1.65%	511.40	46.39%	8.19%	32.08%
HEROMOTOCO	4318.00	250.80	6.17%	26.29	1118.47	6246.25	30.87%	3344.00	29.13%	10.94%	-19.36%
HINDALCO	658.80	8.25	1.27%	71.27	469.18	772.65	14.74%	546.45	20.56%	8.37%	0.60%
HINDUNILVR	2355.00	4.50	0.19%	32.37	762.24	3035.00	22.41%	2136.00	10.25%	-0.66%	0.04%
ICICIBANK	1451.00	24.80	1.74%	182.09	2620.19	1456.50	0.38%	1051.05	38.05%	8.73%	27.28%
INDUSINDBK	780.00	-1.35	-0.17%	73.50	569.57	1550.00	49.68%	606.00	28.71%	13.32%	-45.01%
INFY	1609.50	17.10	1.07%	111.51	1784.50	2006.45	19.78%	1307.00	23.14%	12.98%	11.77%
ITC	432.00	2.90	0.68%	242.60	1045.91	528.50	18.26%	390.15	10.73%	1.79%	-0.14%
JIOFIN	274.05	6.55	2.45%	161.92	438.02	376.00	27.11%	198.65	37.96%	16.29%	-24.10%
JSWSTEEL	1037.00	47.70	4.82%	52.98	541.80	1074.90	3.53%	823.80	25.88%	-0.10%	12.23%
KOTAKBANK	2101.60	9.20	0.44%	42.62	890.35	2301.90	8.70%	1602.45	31.15%	-0.89%	27.10%
LT	3620.00	46.90	1.31%	37.21	1340.64	3963.50	8.67%	2965.30	22.08%	14.67%	5.73%
M&M	3132.00	30.20	0.97%	35.90	1122.67	3270.95	4.25%	2175.00	44.00%	20.21%	36.65%
MARUTI	12900.00	230.00	1.82%	5.61	719.70	13680.00	5.70%	10725.00	20.28%	9.23%	-1.13%
NESTLEIND	2391.50	21.10	0.89%	9.64	229.90	2778.00	13.91%	2110.00	13.34%	0.38%	-4.70%
NTPC	341.90	3.35	0.99%	433.06	1457.29	448.45	23.76%	292.80	16.77%	-5.98%	-4.85%
ONGC	246.98	0.97	0.39%	168.04	413.17	345.00	28.41%	205.00	20.48%	6.79%	-9.85%
POWERGRID	299.05	3.10	1.05%	226.39	668.41	366.25	18.35%	247.30	20.93%	-2.68%	-4.30%
RELIANCE	1453.00	28.60	2.01%	201.75	2908.09	1608.80	9.68%	1114.85	30.33%	16.85%	-49.85%
SBILIFE	1782.00	26.80	1.53%	13.18	233.34	1936.00	7.95%	1307.70	36.27%	15.33%	22.50%
SBIN	808.00	7.30	0.91%	170.54	1367.76	912.00	11.40%	680.00	18.82%	6.21%	-2.14%
SHRIRAMFIN	674.00	22.05	3.38%	98.17	655.47	730.45	7.73%	438.60	53.67%	2.06%	-72.02%
SUNPHARMA	1738.30	30.10	1.76%	38.80	667.60	1960.35	11.33%	1377.20	26.22%	1.22%	10.55%
TATACONSUM	1146.00	25.60	2.28%	20.64	234.73	1250.10	8.33%	882.90	29.80%	2.05%	3.22%
TATAMOTORS	729.00	30.05	4.30%	286.32	2055.99	1179.00	38.17%	535.75	36.07%	17.46%	-27.54%
TATASTEEL	157.19	1.88	1.21%	570.66	894.68	184.60	14.85%	122.62	28.19%	16.41%	-5.84%
TCS	3576.50	27.80	0.78%	35.48	1265.16	4592.25	22.12%	3056.05	17.03%	9.82%	-9.04%
TECHM	1628.00	24.80	1.55%	29.72	482.41	1807.70	9.94%	1193.65	36.39%	25.03%	25.69%
TITAN	3628.80	41.20	1.15%	12.28	444.36	3867.00	6.16%	2925.00	24.06%	10.90%	9.08%
TRENT	5565.50	203.50	3.80%	15.22	836.30	8345.00	33.31%	4196.00	32.64%	12.16%	18.10%
ULTRACEMCO	11898.00	226.00	1.94%	3.71	438.46	12339.00	3.57%	9525.50	24.91%	1.47%	20.82%
WIPRO	256.10	3.16	1.25%	120.83	307.13	324.60	21.10%	208.50	22.83%	5.50%	-44.57%
ETERNAL	242.18	5.32	2.25%	403.34	969.68	304.70	20.52%	146.30	65.54%	#VALUE!	#VALUE!

Disclaimer / Disclosures

ANALYST CERTIFICATION

I, Mrs. Vaishali Parekh B.com, Research Analyst, author and the name subscribed to this report, hereby certify that all of the views expressed in this research report accurately reflect our views about the subject issuer(s) or securities. We also certify that no part of our compensation was, is, or will be directly or indirectly related to the specific recommendation(s) or view(s) in this report.

Terms & conditions and other disclosures:

Prabhudas Lilladher Pvt. Ltd, Mumbai, India (hereinafter referred to as "PL") is engaged in the business of Stock Broking, Portfolio Manager, Depository Participant and distribution for third party financial products. PL is a subsidiary of Prabhudas Lilladher Advisory Services Pvt Ltd. which has its various subsidiaries engaged in business of commodity broking, investment banking, financial services (margin funding) and distribution of third party financial/other products, details in respect of which are available at www.plindia.com

This document has been prepared by the Research Division of PL and is meant for use by the recipient only as information and is not for circulation. This document is not to be reported or copied or made available to others without prior permission of PL. It should not be considered or taken as an offer to sell or a solicitation to buy or sell any security.

The information contained in this report has been obtained from sources that are considered to be reliable. However, PL has not independently verified the accuracy or completeness of the same. Neither PL nor any of its affiliates, its directors or its employees accepts any responsibility of whatsoever nature for the information, statements and opinion given, made available or expressed herein or for any omission therein.

Recipients of this report should be aware that past performance is not necessarily a guide to future performance and value of investments can go down as well. The suitability or otherwise of any investments will depend upon the recipient's particular circumstances and, in case of doubt, advice should be sought from an independent expert/advisor.

Either PL or its affiliates or its directors or its employees or its representatives or its clients or their relatives may have position(s), make market, act as principal or engage in transactions of securities of companies referred to in this report and they may have used the research material prior to publication.

PL may from time to time solicit or perform investment banking or other services for any company mentioned in this document.

PL is registered as Research Analyst under Securities and Exchange Board of India (Research Analysts) Regulations, 2014 PL submits that no material disciplinary action has been taken on us by any Regulatory Authority impacting Equity Research Analysis activities.

PL or its research analysts or its associates or his relatives do not have any financial interest in the subject company.

PL or its research analysts or its associates or his relatives do not have actual/beneficial ownership of one per cent or more securities of the subject company at the end of the month immediately preceding the date of publication of the research report.

PL or its research analysts or its associates or his relatives do not have any material conflict of interest at the time of publication of the research report.

PL or its associates might have received compensation from the subject company in the past twelve months.

PL or its associates might have managed or co-managed public offering of securities for the subject company in the past twelve months or mandated by the subject company for any other assignment in the past twelve months.

PL or its associates might have received any compensation for investment banking or merchant banking or brokerage services from the subject company in the past twelve months.

PL or its associates might have received any compensation for products or services other than investment banking or merchant banking or brokerage services from the subject company in the past twelve months PL or its associates might have received any compensation or other benefits from the subject company or third party in connection with the research report.

PL encourages independence in research report preparation and strives to minimize conflict in preparation of research report. PL or its analysts did not receive any compensation or other benefits from the subject Company or third party in connection with the preparation of the research report. PL or its Research Analysts do not have any material conflict of interest at the time of publication of this report.

It is confirmed that Mrs.Vaishali Parekh B.com, Research Analyst of this report has not received any compensation from the companies mentioned in the report in the preceding twelve months compensation of our Research Analysts is not based on any specific merchant banking, investment banking or brokerage service transactions.

The Research analysts for this report certifies that all of the views expressed in this report accurately reflect his or her personal views about the subject company or companies and its or their securities, and no part of his or her compensation was, is or will be, directly or indirectly related to specific recommendations or views expressed in this report.

The research analysts for this report has not served as an officer, director or employee of the subject company PL or its research analysts have not engaged in market making activity for the subject company

Our sales people, traders, and other professionals or affiliates may provide oral or written market commentary or trading strategies to our clients that reflect opinions that are contrary to the opinions expressed herein, and our proprietary trading and investing businesses may make investment decisions that are inconsistent with the recommendations expressed herein. In reviewing these materials, you should be aware that any or all of the foregoing, among other things, may give rise to real or potential conflicts of interest.

PL and its associates, their directors and employees may (a) from time to time, have a long or short position in, and buy or sell the securities of the subject company or (b) be engaged in any other transaction involving such securities and earn brokerage or other compensation or act as a market maker in the financial instruments of the subject company or act as an advisor or lender/borrower to the subject company or may have any other potential conflict of interests with respect to any recommendation and other related information and opinions.