

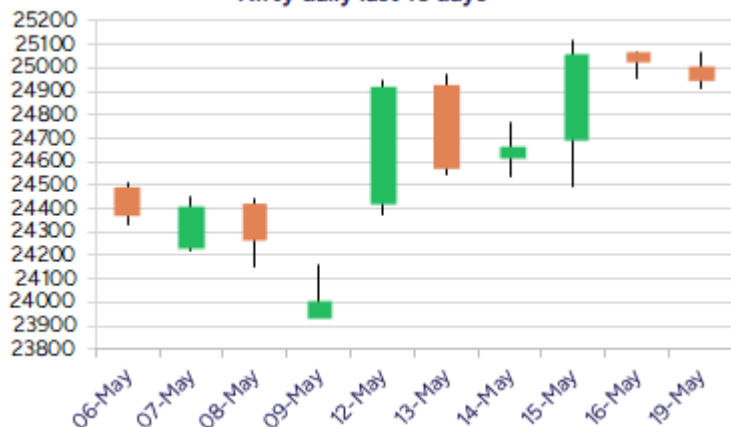
Date: 20<sup>th</sup> May 2025

\* Sensex 82059.42 -271.17

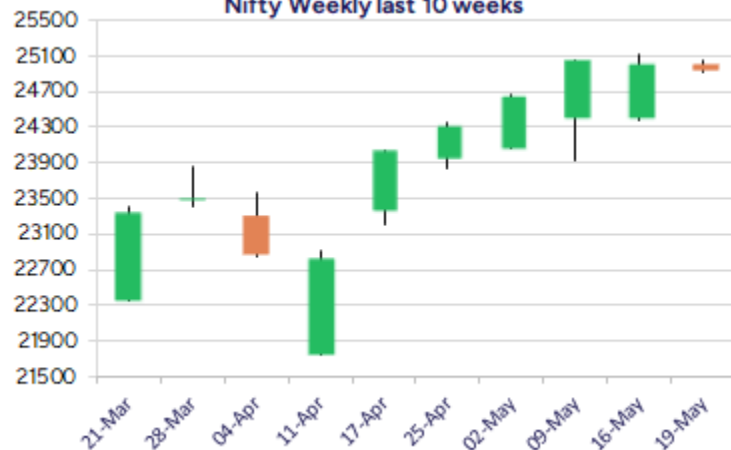
\* Nifty 24945.45 -74.35

\* Bank Nifty 55420.70 +65.80

Nifty daily last 10 days



Nifty Weekly last 10 weeks



\*Blue candle → Close rate > Open rate \* Red candle → Close rate < Open rate

## Market Preview

### Nifty consolidates; ends just below 25000 zone

Nifty has been witnessing rangebound movement during the session with a gradual slide overall consolidating near the 25000 zone after the huge gain in the last week. BankNifty has been overall and need to breach above the 56000 zone to anticipate for fresh upward move. The market breadth was once again strong with the advance decline indicating a ratio of 2:1 at close.

## Market Forecast

### Nifty daily range 24800-25200

Nifty, witnessed another session of narrow movement with consolidation happening with a gradual slide to close below the 25000 zone after the strong pick up in the last week. The overall trend is maintained positive and with the index having the near-term support now positioned near 24800 and major support zone at 24500 level which needs to be sustained, one can expect for further continuation of the uptrend with fresh upside targets of 25400 and 25800 levels expected in the coming days.

BankNifty, continue to remain rangebound and has been gripped between the 56000 and 54000 zone for quite some time and would need a decisive breach above the 56000 level to confirm a breakout and thereafter expect for further rise in the coming days with further fresh targets of 56600 and 58500 levels expected in the coming days. On the downside, as mentioned earlier, the important support zone is lying near the 54000 zone which needs to be sustained to maintain the overall bias intact.

The support for the day is seen at 24800 levels while the resistance is seen at 25200 levels. BankNifty would have the daily range of 55000-56000 levels.

Indices	Period	Closing	% Chng	Trend	Reversal	2 Sup	1 Sup	Pivot	1 Res	2 Res
Nifty	Daily	24945.45	-0.30%	3	24904.10	24829	24887	24975	25033	25121
	Weekly	25019.80	4.21%	9	24096.50	24132	24576	24845	25289	25558
	Monthly	24334.20	3.46%	-7	24274.15	20798	22566	23512	25279	26225
Bank Nifty	Daily	55420.70	0.12%	3	55197.75	55072	55246	55471	55645	55870
	Weekly	55354.90	3.28%	1	54752.45	54063	54709	55099	55745	56136
	Monthly	55087.15	6.83%	1	53311.35	46522	50805	53451	57733	60379
Sensex	Daily	82059.42	-0.33%	-1	82114.50	81690	81875	82149	82334	82609
	Weekly	82330.59	3.62%	9	79418.00	79983	81157	81937	83111	83892
	Monthly	80242.24	3.65%	-7	80009.00	68245	74243	77449	83447	86653

## Daily Trend turned Up

Scrip Name	LCP	Curr Trnd	Reversal
AUOPHARMA	1205.9	-1	1202.85
BRITANNIA	5519.5	-3	5515.9
CESC	172.69	-2	165.45
HAVELLS	1585	-1	1579.65
HDFCBANK	1938.7	-7	1934.65
INDIACEM	321.25	-1	320.7
JUBLFOOD	694.5	-3	683.3
M&M	3128	-7	3122.5
MCDOWELLCOM	1556	-7	1546.9
MGL	1404.6	-4	1388.45
POWERGRID	304.05	-7	301.5
SRF	2977	-4	2930.2

\* Trends turned Up after a significant period

## Daily Trend turned Down

Scrip Name	LCP	Curr Trnd	Reversal
COFORGE	8275.5	22	8351.4
GRASIM	2727	3	2761.85
GUJGASLTD	467.15	5	468.35
HCLTECH	1649.6	5	1662
INDUSTOWER	389.1	5	396.55
INFY	1559.8	22	1588.35
LICHSGFIN	601.65	5	608.85
LUPINLTD	2029.6	4	2057.7
MPHASIS	2534.5	5	2546.8
PIDILITIND	3068.1	5	3081.25
RELIANCE	1440.8	2	1448.2
TCS	3518.8	5	3551.15

\* Trends turned Down after a significant period

## Gainers - Losers ( Nifty 500 Stocks )

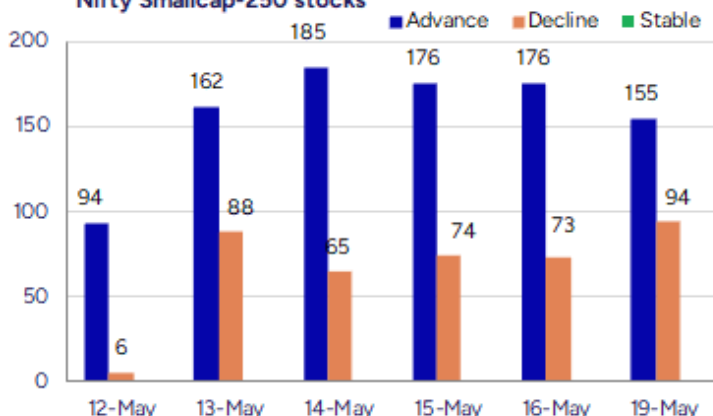
## Gainers

Company Name	Last Price	% Gain	Volume
Banco Products	494.5	20	1105812
Giriraj Civil D	308.15	20	1500
Kaya	342.35	20	430160
Zodiac Energy	529.7	19.99	274618
Ambey Labs	45.55	19.87	70000
Premier Explo	583.85	18.31	7019277
Foods and Inns	109.77	17.44	3918165

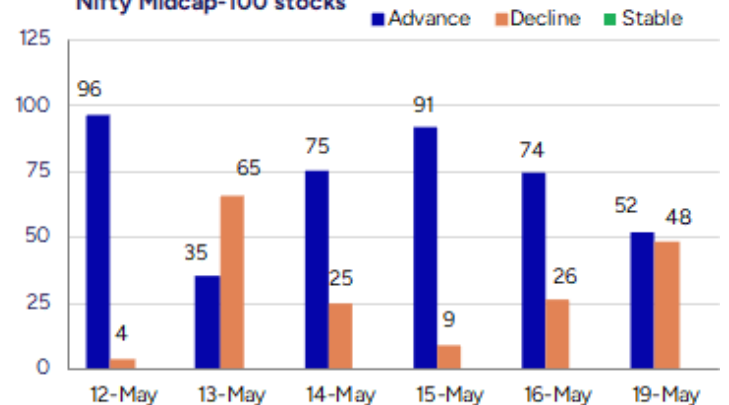
## Losers

Company Name	Last Price	% Loss	Volume
Protean eGov	1143.2	-19.99	1336332
Bharat Bijlee	3096.1	-10.44	736146
Jeena Sikho	2002.55	-10.06	151740
Mukand	108.84	-9.56	795005
Global Educatio	59.65	-9.33	396389
Presstonic	109.35	-8.65	228000
Premier Polyfil	54.92	-8.56	582264

## Nifty Smallcap-250 stocks



## Nifty Midcap-100 stocks



## Nifty Daily chart with RSI indicator



## BankNifty Daily chart with RSI indicator



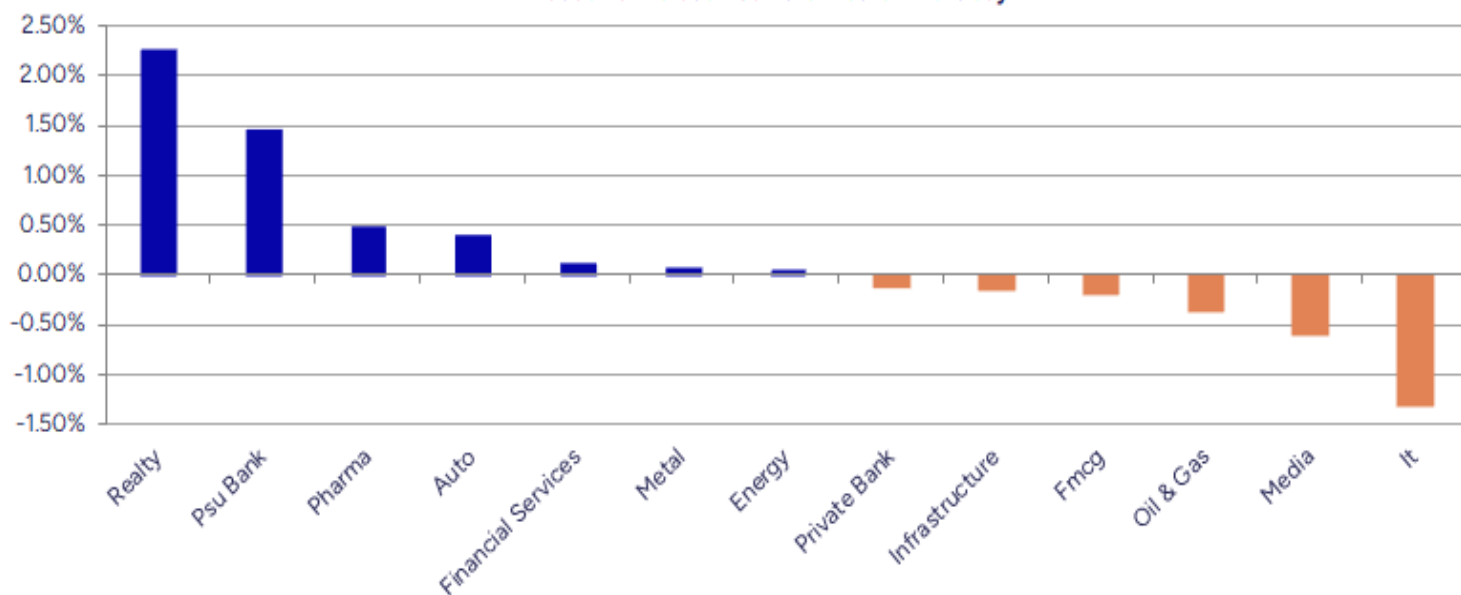
Breakouts - Cross above 200 DMA			
Company Name	LCP	Change %	200 DMA
Graphite India	568.2	12.34	505.77
Precision Wires	182.69	10.03	166.04
Khaitan Chemica	73.81	7.31	68.78
Repro India	573.25	6.98	535.86
Skipper	504	6.36	473.86
BLS E-Services	207.1	5.41	196.48
Indian Hume	438	5.17	416.47
Maral Overseas	78.79	4.94	75.08
Vaidya Sane	138.4	4.31	132.68
Eurotex	14.47	4.18	13.89
Niraj Cement	60.5	3.79	58.29
Giriraj Civil D	308.15	3.58	297.49
Vinati Organics	1864.7	3.43	1802.87
Lakshmi Finance	227.93	3.26	220.73
Zee Learn	8.4	2.94	8.16
Gravita India	2113.3	2.81	2055.56
Mazda	277.15	2.79	269.62
Aarey Drugs	56.51	2.76	54.99

\* Stocks crossing above its Simple Moving Average (200DMA)

Breakdown - Cross below 200 DMA			
Company Name	LCP	Change %	200 DMA
Premier Polyfil	54.92	-7.35	59.28
Guj Amb Exports	115.79	-6.31	123.59
Asian Energy	311.85	-6.03	331.86
Radiant Cash	68.96	-5.33	72.84
Rudrabhishek En	208.53	-3.61	216.35
Tasty Bite	10249	-3.39	10609.02
Archidply Decor	90.05	-3.27	93.09
Zenithexpo	258	-2.97	265.89
NESCO	935.15	-2.10	955.24
Orient Electric	233.05	-1.56	236.74
Indegene	599.35	-1.46	608.23
LIC Housing Fin	601.65	-1.44	610.46
Brooks Labs	135.87	-1.17	137.48
PB Fintech	1694.5	-0.77	1707.59
Linc	141.61	-0.66	142.55
MO Nasdaq Q50	73.65	-0.45	73.98
Tech Mahindra	1597.8	-0.42	1604.56
Lagnam Spintex	117.27	-0.37	117.7

\* Stocks crossing below its Simple Moving Average (200DMA)

Sectoral Indices - Gainers Losers for the day



Stocks witnessing a volume surge as compared to their 5 day average volume

Watch out for the stocks that have seen a huge spurt in its share price over the last three days

Volume Shockers - NSE					
Company name	LCP	% Chg	Volume	Avg Vol *	% Chg
Praxis Home Ret	11.63	4.96	21105040	62438	33702
Diamond Power	94.97	-0.26	1841824	6800	26984
HEG	528.7	7.77	14338170	80062	17809
Paras Defence	1707.8	-5.1	7106448	74764	9405
Premier Explo	583.85	18.31	7019401	77069	9008
Kaya	342.35	20	430160	6240	6793
Jai Balaji Ind	107.3	-3.21	2533723	54390	4558
Kirloskar Ind	3490	10.2	153698	3456	4347
Graphite India	568.2	16.82	20937985	506938	4030
Data Patterns	2801.7	-2.32	3727489	106334	3405
HCL Info	22.49	9.71	9173824	324996	2723
Foods and Inns	109.77	17.44	3920560	146288	2580
Delhivery	351.25	9.47	44158148	1749966	2423
A B Infrabuild	111.88	3.76	356973	15200	2249
BEW Engineering	195.1	-2.18	26000	1125	2211
KCK Industries	38	4.54	310000	13600	2179
Shakti Pumps	854.65	0.98	808668	38631	1993
Sumit Woods	108.08	7.55	292141	14456	1921
Krishna Institu	645.1	0.75	1161197	59456	1853
Avantel	133.83	9.52	10340869	538541	1820

\* the Average Volume of last 5 days

Price Shockers - NSE				
Company name	LCP	Prv Close	% Chg	Volume
Giriraj Civil D	308.15	196	57.22	1500
HCL Info	22.49	15.54	44.72	9173805
Nucleus Softwar	1332.55	966	37.95	1506455
Visaka Ind	86	63.42	35.6	1858507
Tankup Engineer	226.1	171	32.22	124000
Innomet Advance	181.7	138	31.67	123600
Premier Explo	583.85	446.4	30.79	7019277
Kaya	342.35	262.5	30.42	430160
Peria Karamalai	894.8	688.6	29.94	53550
Zodiac Energy	529.7	416.9	27.06	274618
Themis Medicare	170.74	135.45	26.05	982692
Khaitan Chemica	73.81	59.03	25.04	732899
Banco Products	494.5	398.05	24.23	1105812
AVG Logistics	325.8	262.54	24.1	83108
Kanpur Plast	214.28	175.16	22.33	253985
CCCL	19.95	16.46	21.2	183922
Kirloskar Oil	886	735.2	20.51	435190
Valiant Organic	393.4	326.85	20.36	121629
Foods and Inns	109.77	91.41	20.09	3918165
BITES	294.93	245.73	20.02	11251147

\* the % price rise of the last 3 days



Symbol	LTP	Chng	% Chng	Volume (lacs)	Turnover (crs.)	52w High	Diff with 52w H	52w Low	Diff with 52w L	365 days % chng	30 days % chng
NIFTY 50	24945.45	-74.35	-0.30%	2552.41	21597.62	26277.35	5.07%	21281.45	17.22%	4.90%	11.37%
ADANIEN	2538.00	-17.00	-0.67%	6.81	174.12	3743.90	32.21%	2025.00	25.33%	5.66%	-16.52%
ADANIPTS	1396.70	-10.70	-0.76%	13.17	184.35	1621.40	13.86%	995.65	40.28%	11.75%	5.37%
APOLLOHOSP	6980.00	-35.00	-0.50%	3.07	215.07	7545.35	7.49%	5693.20	22.60%	-0.83%	17.84%
ASIANPAINT	2331.00	-22.60	-0.96%	5.53	129.79	3394.90	31.34%	2124.75	9.71%	-4.63%	-16.24%
AXISBANK	1203.00	-5.80	-0.48%	45.50	549.66	1339.65	10.20%	933.50	28.87%	1.51%	5.91%
BAJAJ-AUTO	8830.00	347.50	4.10%	8.58	753.19	12774.00	30.88%	7089.35	24.55%	5.79%	-3.40%
BAJAJFINSV	2037.20	3.60	0.18%	13.80	281.41	2135.00	4.58%	1419.05	43.56%	-0.08%	28.32%
BAJFINANCE	9248.00	81.00	0.88%	7.16	661.51	9660.00	4.27%	6375.70	45.05%	0.05%	36.26%
BEL	363.00	-0.90	-0.25%	519.97	1909.65	373.50	2.81%	227.50	59.56%	23.29%	46.62%
BHARTIARTL	1816.50	2.50	0.14%	58.00	1054.64	1917.00	5.24%	1219.05	49.01%	-3.98%	34.93%
CIPLA	1491.00	-8.90	-0.59%	18.58	277.85	1702.05	12.40%	1335.00	11.69%	-1.01%	7.21%
COALINDIA	402.85	-1.95	-0.48%	54.47	220.02	543.55	25.89%	349.25	15.35%	1.49%	-13.92%
DRREDDY	1215.60	-15.10	-1.23%	22.35	273.41	1421.49	14.48%	1020.00	19.18%	5.77%	-78.78%
EICHERMOT	5528.00	18.50	0.34%	6.54	364.86	5906.50	6.41%	4253.85	29.95%	-2.98%	17.38%
GRASIM	2723.00	-81.20	-2.90%	5.76	158.33	2877.75	5.38%	2171.60	25.39%	1.58%	15.70%
HCLTECH	1651.00	-8.90	-0.54%	16.42	270.67	2012.20	17.95%	1235.00	33.68%	15.43%	24.50%
HDFCBANK	1937.10	2.40	0.12%	51.01	988.73	1978.90	2.11%	1435.50	34.94%	1.47%	32.14%
HDFCLIFE	749.45	-1.10	-0.15%	11.87	89.36	761.20	1.54%	511.40	46.55%	4.24%	31.63%
HEROMOTOCO	4384.00	38.70	0.89%	7.54	332.30	6246.25	29.81%	3344.00	31.10%	15.20%	-14.62%
HINDALCO	661.45	3.90	0.59%	33.21	218.45	772.65	14.39%	546.45	21.04%	7.88%	0.32%
HINDUNILVR	2381.00	-0.40	-0.02%	9.36	223.70	3035.00	21.55%	2136.00	11.47%	0.27%	2.63%
ICICIBANK	1447.00	-7.00	-0.48%	60.05	871.55	1459.70	0.87%	1051.05	37.67%	3.36%	28.62%
INDUSINDBK	782.45	2.25	0.29%	71.92	562.62	1550.00	49.52%	606.00	29.12%	-1.82%	-44.76%
INFY	1557.90	-32.00	-2.01%	88.56	1386.30	2006.45	22.36%	1307.00	19.20%	12.00%	10.08%
ITC	436.10	0.40	0.09%	75.44	328.14	528.50	17.48%	390.15	11.78%	1.98%	-0.14%
JIOFIN	276.85	-0.15	-0.05%	102.02	283.30	376.00	26.37%	198.65	39.37%	12.39%	-22.45%
JSWSTEEL	1018.70	-3.10	-0.30%	14.35	146.68	1074.90	5.23%	823.80	23.66%	1.45%	12.60%
KOTAKBANK	2110.00	1.80	0.09%	15.05	318.10	2301.90	8.34%	1602.45	31.67%	-3.65%	24.26%
LT	3596.60	-8.10	-0.22%	15.19	547.07	3963.50	9.26%	2965.30	21.29%	11.01%	4.46%
M&M	3125.00	-10.60	-0.34%	20.11	630.26	3270.95	4.46%	2286.20	36.69%	17.03%	24.70%
MARUTI	12950.00	-45.00	-0.35%	2.44	317.17	13680.00	5.34%	10725.00	20.75%	11.12%	2.80%
NESTLEIND	2404.00	-4.80	-0.20%	4.23	101.90	2778.00	13.46%	2110.00	13.93%	-0.32%	-1.50%
NTPC	345.25	2.15	0.63%	62.18	214.91	448.45	23.01%	292.80	17.91%	-5.74%	-6.12%
ONGC	246.50	-0.77	-0.31%	80.43	198.47	345.00	28.55%	205.00	20.24%	1.55%	-10.88%
POWERGRID	304.25	4.05	1.35%	125.74	380.72	366.25	16.93%	247.30	23.03%	-2.85%	-4.14%
RELIANCE	1442.90	-13.50	-0.93%	61.96	894.44	1608.80	10.31%	1114.85	29.43%	14.27%	-49.28%
SBILIFE	1770.00	-3.40	-0.19%	2.89	51.10	1936.00	8.57%	1307.70	35.35%	10.27%	23.65%
SBIN	794.45	2.35	0.30%	106.66	849.79	912.00	12.89%	680.00	16.83%	-0.67%	-3.15%
SHRIRAMFIN	677.80	12.30	1.85%	43.56	294.76	730.45	7.21%	438.60	54.54%	-3.79%	-71.94%
SUNPHARMA	1729.00	-5.90	-0.34%	20.74	361.08	1960.35	11.80%	1377.20	25.54%	-0.95%	13.29%
TATACONSUM	1150.00	-18.00	-1.54%	7.86	90.70	1250.10	8.01%	882.90	30.25%	4.27%	6.65%
TATAMOTORS	728.70	-2.00	-0.27%	104.60	766.88	1179.00	38.19%	535.75	36.01%	17.56%	-22.73%
TATASTEEL	157.25	-0.30	-0.19%	218.39	343.20	184.60	14.82%	122.62	28.24%	14.88%	-5.86%
TCS	3518.00	-43.30	-1.22%	25.37	893.74	4592.25	23.39%	3056.05	15.12%	7.95%	-7.12%
TECHM	1597.50	-19.50	-1.21%	6.82	109.34	1807.70	11.63%	1193.65	33.83%	23.74%	23.87%
TITAN	3612.00	-21.70	-0.60%	3.77	136.66	3867.00	6.59%	2925.00	23.49%	9.20%	8.11%
TRENT	5545.00	-38.00	-0.68%	6.05	337.66	8345.00	33.55%	4196.00	32.15%	8.82%	20.46%
ULTRACEMCO	11919.00	14.00	0.12%	1.28	153.11	12339.00	3.40%	9525.50	25.13%	0.03%	20.37%
WIPRO	251.55	-2.76	-1.09%	67.89	171.50	324.60	22.50%	208.50	20.65%	7.35%	-44.84%
ETERNAL	238.25	-7.51	-3.06%	218.18	525.39	304.70	21.81%	146.30	62.85%	#VALUE!	#VALUE!

## Disclaimer / Disclosures

### ANALYST CERTIFICATION

I, Mrs. Vaishali Parekh B.com, Research Analyst, author and the name subscribed to this report, hereby certify that all of the views expressed in this research report accurately reflect our views about the subject issuer(s) or securities. We also certify that no part of our compensation was, is, or will be directly or indirectly related to the specific recommendation(s) or view(s) in this report.

Terms & conditions and other disclosures:

Prabhudas Lilladher Pvt. Ltd, Mumbai, India (hereinafter referred to as "PL") is engaged in the business of Stock Broking, Portfolio Manager, Depository Participant and distribution for third party financial products. PL is a subsidiary of Prabhudas Lilladher Advisory Services Pvt Ltd. which has its various subsidiaries engaged in business of commodity broking, investment banking, financial services (margin funding) and distribution of third party financial/other products, details in respect of which are available at [www.plindia.com](http://www.plindia.com)

This document has been prepared by the Research Division of PL and is meant for use by the recipient only as information and is not for circulation. This document is not to be reported or copied or made available to others without prior permission of PL. It should not be considered or taken as an offer to sell or a solicitation to buy or sell any security.

The information contained in this report has been obtained from sources that are considered to be reliable. However, PL has not independently verified the accuracy or completeness of the same. Neither PL nor any of its affiliates, its directors or its employees accepts any responsibility of whatsoever nature for the information, statements and opinion given, made available or expressed herein or for any omission therein.

Recipients of this report should be aware that past performance is not necessarily a guide to future performance and value of investments can go down as well. The suitability or otherwise of any investments will depend upon the recipient's particular circumstances and, in case of doubt, advice should be sought from an independent expert/advisor.

Either PL or its affiliates or its directors or its employees or its representatives or its clients or their relatives may have position(s), make market, act as principal or engage in transactions of securities of companies referred to in this report and they may have used the research material prior to publication.

PL may from time to time solicit or perform investment banking or other services for any company mentioned in this document.

PL is registered as Research Analyst under Securities and Exchange Board of India (Research Analysts) Regulations, 2014 PL submits that no material disciplinary action has been taken on us by any Regulatory Authority impacting Equity Research Analysis activities.

PL or its research analysts or its associates or his relatives do not have any financial interest in the subject company.

PL or its research analysts or its associates or his relatives do not have actual/beneficial ownership of one per cent or more securities of the subject company at the end of the month immediately preceding the date of publication of the research report.

PL or its research analysts or its associates or his relatives do not have any material conflict of interest at the time of publication of the research report.

PL or its associates might have received compensation from the subject company in the past twelve months.

PL or its associates might have managed or co-managed public offering of securities for the subject company in the past twelve months or mandated by the subject company for any other assignment in the past twelve months.

PL or its associates might have received any compensation for investment banking or merchant banking or brokerage services from the subject company in the past twelve months.

PL or its associates might have received any compensation for products or services other than investment banking or merchant banking or brokerage services from the subject company in the past twelve months PL or its associates might have received any compensation or other benefits from the subject company or third party in connection with the research report.

PL encourages independence in research report preparation and strives to minimize conflict in preparation of research report. PL or its analysts did not receive any compensation or other benefits from the subject Company or third party in connection with the preparation of the research report. PL or its Research Analysts do not have any material conflict of interest at the time of publication of this report.

It is confirmed that Mrs.Vaishali Parekh B.com, Research Analyst of this report has not received any compensation from the companies mentioned in the report in the preceding twelve months compensation of our Research Analysts is not based on any specific merchant banking, investment banking or brokerage service transactions.

The Research analysts for this report certifies that all of the views expressed in this report accurately reflect his or her personal views about the subject company or companies and its or their securities, and no part of his or her compensation was, is or will be, directly or indirectly related to specific recommendations or views expressed in this report.

The research analysts for this report has not served as an officer, director or employee of the subject company PL or its research analysts have not engaged in market making activity for the subject company

Our sales people, traders, and other professionals or affiliates may provide oral or written market commentary or trading strategies to our clients that reflect opinions that are contrary to the opinions expressed herein, and our proprietary trading and investing businesses may make investment decisions that are inconsistent with the recommendations expressed herein. In reviewing these materials, you should be aware that any or all of the foregoing, among other things, may give rise to real or potential conflicts of interest.

PL and its associates, their directors and employees may (a) from time to time, have a long or short position in, and buy or sell the securities of the subject company or (b) be engaged in any other transaction involving such securities and earn brokerage or other compensation or act as a market maker in the financial instruments of the subject company or act as an advisor or lender/borrower to the subject company or may have any other potential conflict of interests with respect to any recommendation and other related information and opinions.