

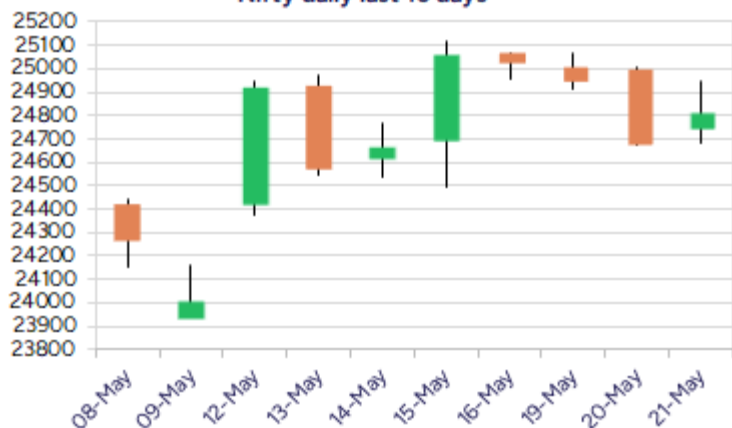
Date: 22<sup>nd</sup> May 2025

\* Sensex 81596.63 + 410.19

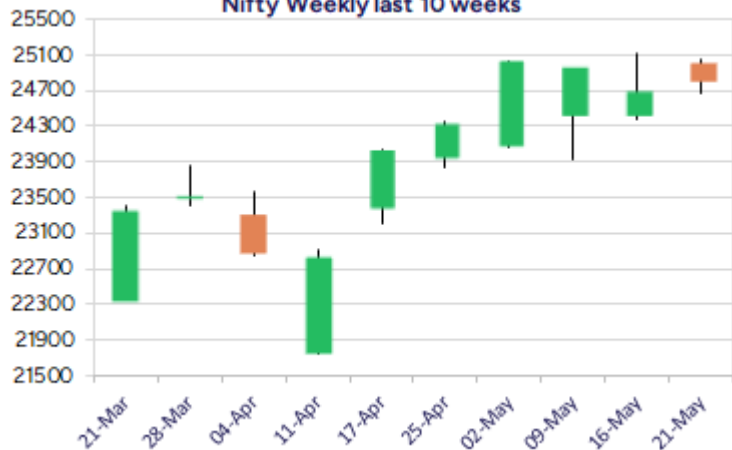
\* Nifty 24813.45 + 129.55

\* Bank Nifty 55075.10 + 197.75

Nifty daily last 10 days



Nifty Weekly last 10 weeks



\*Blue candle → Close rate > Open rate \* Red candle → Close rate < Open rate

## Market Preview

### Nifty regains strength

Nifty after a volatile session witnessed a decent pullback to end the day on an optimistic note closing near the 24800 level with overall trend maintained positive. BankNifty after the fluctuations ended the session above the 55000 zone with rangebound movement witnessed for quite some time. The market breadth was strong with the advance decline indicating a ratio of 2:1 at close.

## Market Forecast

### Nifty daily range 24650-25000

Nifty, with the overall trend maintained positive witnessed a recovery amid the volatile session from near the 24700 zone to end on a positive note near the 24800 level with anticipation of retesting the 25000 zone in the coming session. The overall bias is maintained strong with the index indicating an ascending channel pattern on the daily chart with crucial support positioned near 24500, while on the upper side, a decisive breach above 25000 zone shall trigger for fresh upward move in the coming days.

BankNifty, continue to move within the tight range of 55700 and 54500 zone, to close near the 55000 level with overall trend maintained positive. As mentioned earlier, we maintain our stance of the crucial support positioned near the 54000 level which needs to be sustained, while a decisive breach above the 55800 zone shall trigger for a breakout and thereafter expect for fresh further rise in the coming days.

The support for the day is seen at 24650 levels while the resistance is seen at 25000 levels. BankNifty would have the daily range of 54600-55600 levels.

Indices	Period	Closing	% Chng	Trend	Reversal	2 Sup	1 Sup	Pivot	1 Res	2 Res
Nifty	Daily	24813.45	0.52%	-2	24971.35	24554	24684	24815	24945	25076
	Weekly	25019.80	4.21%	9	24096.50	24132	24576	24845	25289	25558
	Monthly	24334.20	3.46%	-7	24274.15	20798	22566	23512	25279	26225
Bank Nifty	Daily	55075.10	0.36%	-2	55289.80	54388	54732	55034	55378	55680
	Weekly	55354.90	3.28%	1	54752.45	54063	54709	55099	55745	56136
	Monthly	55087.15	6.83%	1	53311.35	46522	50805	53451	57733	60379
Sensex	Daily	81596.63	0.51%	-3	82211.40	80834	81215	81618	82000	82403
	Weekly	82330.59	3.62%	9	79418.00	79983	81157	81937	83111	83892
	Monthly	80242.24	3.65%	-7	80009.00	68245	74243	77449	83447	86653

Daily Trend turned Up			
Scrip Name	LCP	Curr Trnd	Reversal
APOLLOHOSP	6984	-1	6983.3
BAJAJFINSV	2037.3	-1	2034.45
GLAXO	2984.2	-1	2817.45
HINDZINC	442.05	-1	440.2
INDHOTEL	773.1	-1	762.1
IRBINFRA	51.35	-1	50.55
KSCL	1396	-5	1368
PETRONET	321.75	-1	319.6
RECLTD	400.2	-1	398.05
SUNPHARMA	1731.8	-1	1712.4
SYNGENE	639.35	-1	632.4
TORNTPHARM	3289	-1	3262.95

\* Trends turned Up after a significant period

Daily Trend turned Down			
Scrip Name	LCP	Curr Trnd	Reversal
ADANIENT	2500.4	7	2517.35
BIRLACORPN	1386.6	7	1429.3
CENTURYTEX	2089.6	7	2104.3
DIXON	15612	4	16486.35
ESCORTS	3514.4	7	3540.3
JKLAKSHMI	852.7	7	861.85
JSWSTEELLTD	1000.9	7	1013.2
LTTS	4451.4	7	4478.05
PIIND	3709.9	4	3729
RALLIS	280.76	7	291.65
REPCOHOME	397.1	7	414.35
TATAELXSI	6184.5	7	6207

\* Trends turned Down after a significant period

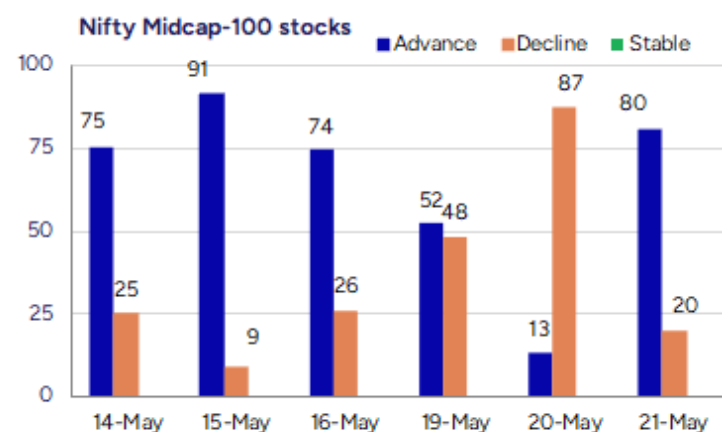
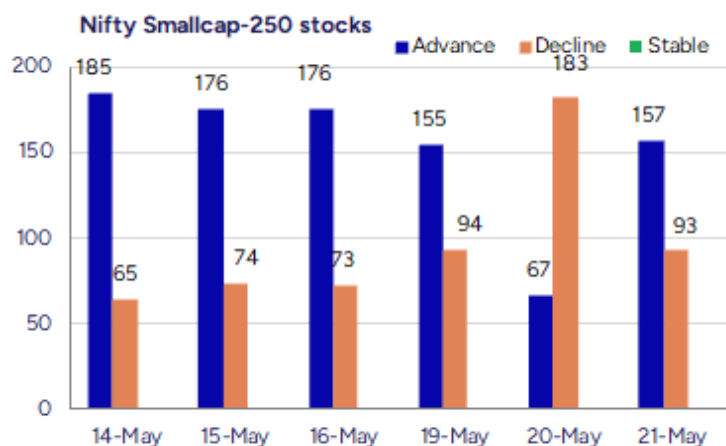
### Gainers - Losers ( Nifty 500 Stocks )

#### Gainers

Company Name	Last Price	% Gain	Volume
The Grob Tea	1112.5	20	5204
A B Infrabuild	133.51	20	1170380
HP Telecom Ind	166.1	19.07	20400
TataTeleservice	69.09	18.65	105891001
Ecos India Mobi	275.19	14.49	4280959
Trident	33.48	13.61	65754966
Maxvolt Energy	236.4	13.52	282400

#### Losers

Company Name	Last Price	% Loss	Volume
Music Broadcast	9.44	-12.75	2621286
Themis Medicare	142.34	-11.1	538017
Krishna Defence	809.6	-11.06	428500
Fineotex Chem	231.87	-9.9	2453517
Gulshan Poly	193.87	-8.14	584731
Vishwas Agri	58.1	-7.63	8000
Arunaya Organic	40.8	-7.27	478000



## Nifty Daily chart with RSI indicator



## BankNifty Daily chart with RSI indicator



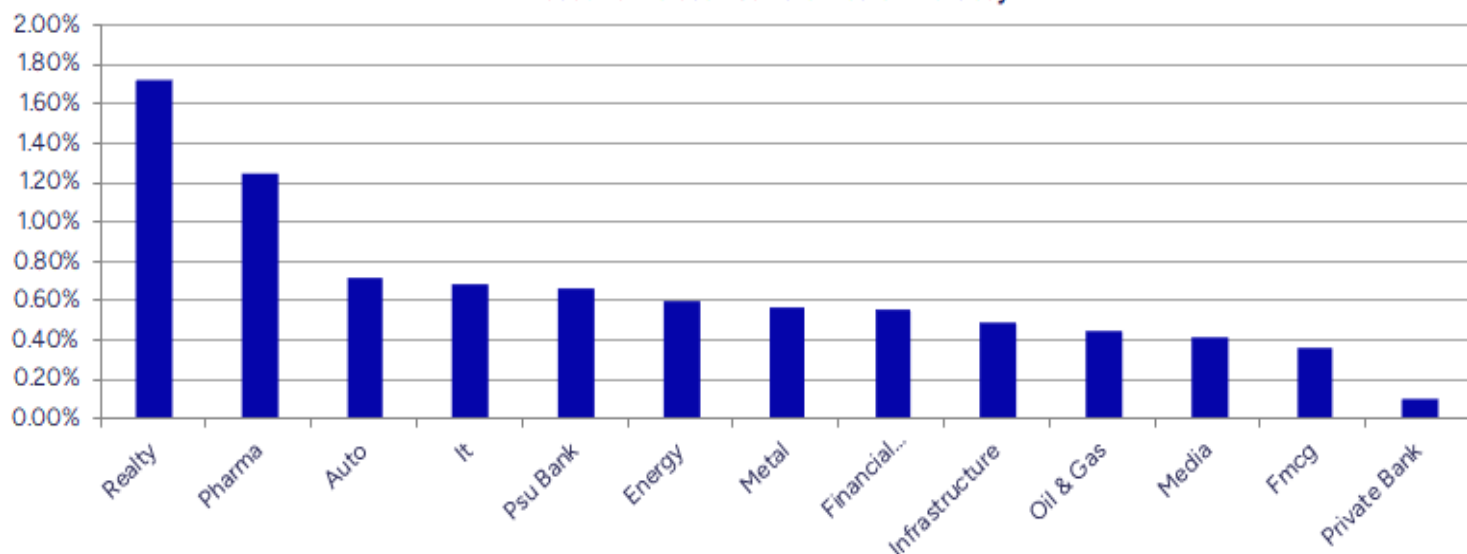
Breakouts - Cross above 200 DMA			
Company Name	LCP	Change %	200 DMA
JK Tyre & Ind	393.5	9.53	359.27
The Grob Tea	1112.5	7.49	1034.94
Sequent Scienti	178.73	5.18	169.93
LT Foods	398.15	5.13	378.71
Motilal Oswal	800	4.91	762.57
Trident	33.48	4.46	32.05
Sejal Glass	467.85	4.34	448.4
JM Financial	121.85	4.04	117.12
Himatsingka Sei	163.97	3.66	158.18
Honda India PP	3073.6	3.51	2969.35
GMM Pfaudler	1265.8	2.54	1234.4
HYBRIDFIN	13.3	2.39	12.99
Anlon Technolog	379.5	2.03	371.94
Kothari Product	82.99	1.79	81.53
Pattech Fitwell	89.25	1.73	87.73
Ingersoll Rand	4028.4	1.68	3961.89
Ambika Cotton	1580.4	1.53	1556.58
BEML	3640.2	1.38	3590.55

\* Stocks crossing above its Simple Moving Average (200DMA)

Breakdown - Cross below 200 DMA			
Company Name	LCP	Change %	200 DMA
SP Refractories	148.5	-3.33	153.62
Aarey Drugs	53.27	-3.25	55.06
NDTV	154.36	-2.96	159.07
Surana Telecom	20.81	-2.39	21.32
EIH	370.05	-2.24	378.51
Alkali Metals	104.12	-2.23	106.5
Rallis India	280.76	-2.18	287.02
GSFC	200.21	-2.17	204.66
HF	549.1	-1.79	559.11
Sanghvi Movers	327.75	-1.54	332.86
ASK Auto	428.85	-1.48	435.28
Satin Credit	165.88	-1.08	167.69
Navneet	142.66	-0.68	143.63
Nilkamal	1776.9	-0.68	1789.06
Gulshan Poly	193.87	-0.44	194.72
JHS Svendgaard	40.59	-0.39	40.75
Sapphire Foods	321.45	-0.38	322.68
MO NASDAQ 100	178.28	-0.38	178.96

\* Stocks crossing below its Simple Moving Average (200DMA)

Sectoral Indices - Gainers Losers for the day



Stocks witnessing a volume surge as compared to their 5 day average volume

Watch out for the stocks that have seen a huge spurt in its share price over the last three days

Volume Shockers - NSE					
Company name	LCP	% Chg	Volume	Avg Vol *	% Chg
A B Infrabuild	133.51	20	1170380	15200	7600
Banco Products	572.35	11.2	7535169	98933	7516
Dredging Corp	750.05	10.64	4856206	65028	7368
Kapston Service	267.99	4.8	210600	3227	6427
JK Tyre & Ind	393.5	13.11	30874844	569461	5322
Remsons Ind	145.4	2.79	928261	21094	4301
Diamond Power	95.26	0.42	269559	6800	3864
Data Patterns	2744.2	3.97	3672313	106334	3354
Paras Defence	1574.7	-1.38	2457057	74764	3186
Premier Explo	584.35	5.08	2484262	77069	3123
HLE Glascoat	393.8	8.6	3181961	102534	3003
Krishana Phosch	379.85	7.53	704232	25704	2640
SecMark Consult	150.41	10	64218	2849	2154
Laxmi Goldorna	547.95	2.42	23134	1094	2015
HEG	492.55	-0.38	1574656	80062	1867
Kothari Product	82.99	6.92	277208	14677	1789
Krishna Institu	662.75	3.72	1103992	59456	1757
Tatva Chintan	965.85	6.57	957143	54833	1646
Zee Learn	8.9	9.07	5256262	309778	1597
Newgen Software	1266.05	-5.13	1925355	114472	1582

\* the Average Volume of last 5 days

Price Shockers - NSE				
Company name	LCP	Prv Close	% Chg	Volume
Giriraj Civil D	372.8	256.8	45.17	12250
Banco Products	572.35	412.1	38.89	7535169
Kapston Service	267.99	201.36	33.09	210600
Atlas Cycles	116.85	87.8	33.09	66130
HLE Glascoat	393.8	296.4	32.86	3181961
Honda India PP	3073.6	2379.8	29.15	528479
Maxvolt Energy	236.4	184.4	28.2	282400
Tatva Chintan	965.85	769	25.6	957143
HP Telecom Ind	166.1	132.5	25.36	20400
The Grob Tea	1112.5	895.35	24.25	5204
A B Infrabuild	133.51	107.83	23.82	1170380
Thomas Cook	167	140.42	18.93	5918109
NDTV	154.36	129.98	18.76	718070
Premier Explo	584.35	493.5	18.41	2484262
D P Wires	274.51	232.17	18.24	182533
Kaya	336.25	285.3	17.86	61668
Umiya Buildcon	73.58	62.61	17.52	585832
Visaka Ind	87.19	74.21	17.49	976268
Zodiac Energy	517.55	441.45	17.24	81139
HT Media	20.49	17.5	17.09	2343975

\* the % price rise of the last 3 days



Symbol	LTP	Chng	% Chng	Volume (lacs)	Turnover (crs.)	52w High	Diff with 52w H	52w Low	Diff with 52w L	365 days % chng	30 days % chng
NIFTY 50	24813.45	129.55	0.52%	3326.72	23177.21	26277.35	5.57%	21281.45	16.60%	3.49%	9.87%
ADANIENT	2503.00	1.40	0.06%	5.29	132.48	3743.90	33.14%	2025.00	23.60%	3.45%	-18.26%
ADANIPTS	1387.60	3.00	0.22%	19.94	275.38	1621.40	14.42%	995.65	39.37%	9.94%	3.66%
APOLLOHOSP	6988.50	76.50	1.11%	4.50	314.49	7545.35	7.38%	5693.20	22.75%	-2.28%	16.11%
ASIANPAINT	2308.30	12.70	0.55%	4.69	108.31	3394.90	32.01%	2124.75	8.64%	-6.98%	-18.30%
AXISBANK	1198.00	2.20	0.18%	37.12	444.20	1339.65	10.57%	933.50	28.33%	0.42%	4.77%
BAJAJ-AUTO	8680.00	115.00	1.34%	5.73	496.94	12774.00	32.05%	7089.35	22.44%	6.82%	-2.46%
BAJAJFINSV	2034.30	29.20	1.46%	12.91	262.00	2135.00	4.72%	1419.05	43.36%	-1.48%	26.52%
BAJFINANCE	9192.00	113.00	1.24%	7.32	672.43	9660.00	4.84%	6375.70	44.17%	-0.91%	34.96%
BEL	382.95	19.15	5.26%	886.72	3343.39	383.90	0.25%	230.00	66.50%	23.26%	46.58%
BHARTIARTL	1822.00	13.10	0.72%	68.49	1246.01	1917.00	4.96%	1219.05	49.46%	-4.25%	34.55%
CIPLA	1481.00	26.60	1.83%	20.01	296.48	1702.05	12.99%	1335.00	10.94%	-4.01%	3.96%
COALINDIA	405.45	-2.65	-0.65%	73.92	301.12	543.55	25.41%	349.25	16.09%	2.32%	-13.22%
DRREDDY	1224.80	0.60	0.05%	26.15	323.41	1421.49	13.84%	1020.00	20.08%	5.21%	-78.89%
EICHERMOT	5400.00	12.50	0.23%	3.01	163.19	5906.50	8.58%	4253.85	26.94%	-5.12%	14.78%
GRASIM	2703.00	-17.80	-0.65%	3.04	82.59	2877.75	6.07%	2171.60	24.47%	-1.45%	12.26%
HCLTECH	1649.00	10.70	0.65%	14.21	234.15	2012.20	18.05%	1235.00	33.52%	13.93%	22.88%
HDFCBANK	1925.20	10.30	0.54%	75.66	1460.54	1978.90	2.71%	1448.15	32.94%	0.43%	30.79%
HDFCLIFE	758.00	10.95	1.47%	19.29	146.00	761.20	0.42%	511.40	48.22%	3.75%	31.02%
HEROMOTOCO	4253.00	11.40	0.27%	3.97	168.81	6246.25	31.91%	3344.00	27.18%	12.46%	-16.65%
HINDALCO	661.70	-1.05	-0.16%	86.23	570.83	772.65	14.36%	546.45	21.09%	8.74%	1.11%
HINDUNILVR	2360.10	19.00	0.81%	15.71	371.70	3035.00	22.24%	2136.00	10.49%	-1.43%	0.89%
ICICIBANK	1445.40	7.20	0.50%	55.10	796.32	1459.70	0.98%	1051.05	37.52%	2.24%	27.22%
INDUSINDBK	766.80	-15.45	-1.98%	81.34	626.68	1550.00	50.53%	606.00	26.53%	-1.57%	-44.61%
INFY	1566.90	6.30	0.40%	41.57	651.00	2006.45	21.91%	1307.00	19.89%	9.94%	8.05%
ITC	432.40	-2.50	-0.57%	57.76	251.28	528.50	18.18%	390.15	10.83%	1.79%	-0.32%
JIOFIN	274.55	3.10	1.14%	104.74	286.26	376.00	26.98%	198.65	38.21%	10.14%	-24.01%
JSWSTEEL	1001.90	-10.80	-1.07%	8.75	88.25	1074.90	6.79%	823.80	21.62%	0.55%	11.60%
KOTAKBANK	2072.50	-17.60	-0.84%	21.42	444.59	2301.90	9.97%	1602.45	29.33%	-4.48%	23.20%
LT	3587.00	19.20	0.54%	15.64	560.02	3963.50	9.50%	2965.30	20.97%	9.87%	3.39%
M&M	3086.30	22.80	0.74%	13.95	431.99	3270.95	5.65%	2425.00	27.27%	14.34%	21.83%
MARUTI	12618.00	-20.00	-0.16%	2.09	265.05	13680.00	7.76%	10725.00	17.65%	8.06%	-0.03%
NESTLEIND	2385.50	27.00	1.14%	6.75	161.07	2778.00	14.13%	2110.00	13.06%	-2.40%	-3.56%
NTPC	346.50	3.90	1.14%	59.19	204.16	448.45	22.73%	292.80	18.34%	-5.88%	-6.25%
ONGC	248.99	-0.27	-0.11%	71.58	178.44	345.00	27.83%	205.00	21.46%	2.37%	-10.16%
POWERGRID	296.10	-1.80	-0.60%	119.94	357.59	366.25	19.15%	247.30	19.73%	-3.59%	-4.87%
RELIANCE	1428.20	3.60	0.25%	61.36	876.07	1608.80	11.23%	1114.85	28.11%	11.78%	-50.39%
SBILIFE	1766.90	9.10	0.52%	5.21	92.10	1936.00	8.73%	1307.70	35.12%	9.30%	22.56%
SBIN	787.20	1.55	0.20%	82.06	644.97	912.00	13.68%	680.00	15.76%	-1.48%	-3.94%
SHRIRAMFIN	655.00	-3.35	-0.51%	79.84	519.78	730.45	10.33%	438.60	49.34%	-4.83%	-72.24%
SUNPHARMA	1732.00	24.20	1.42%	27.54	478.59	1960.35	11.65%	1377.20	25.76%	-2.50%	11.52%
TATACONSUM	1139.10	10.60	0.94%	6.19	70.69	1250.10	8.88%	882.90	29.02%	0.74%	3.04%
TATAMOTORS	726.25	7.35	1.02%	89.97	652.62	1179.00	38.40%	535.75	35.56%	15.66%	-23.98%
TATASTEEL	161.75	3.06	1.93%	360.43	579.31	184.60	12.38%	122.62	31.91%	15.71%	-5.17%
TCS	3521.10	22.80	0.65%	14.40	507.50	4592.25	23.33%	3056.05	15.22%	6.04%	-8.76%
TECHM	1596.10	20.10	1.28%	9.30	148.30	1807.70	11.71%	1193.65	33.72%	20.60%	20.73%
TITAN	3584.00	3.40	0.09%	4.15	148.93	3867.00	7.32%	2925.00	22.53%	7.61%	6.53%
TRENT	5449.00	-0.50	-0.01%	6.08	330.95	8345.00	34.70%	4196.00	29.86%	6.22%	17.58%
ULTRACEMCO	11660.00	-37.00	-0.32%	1.73	202.79	12339.00	5.50%	9534.95	22.29%	-1.71%	18.27%
WIPRO	250.78	1.07	0.43%	53.09	133.13	324.60	22.74%	208.50	20.28%	5.41%	-45.83%
ETERNAL	230.01	1.73	0.76%	471.64	1074.35	304.70	24.51%	146.30	57.22%	#VALUE!	#VALUE!

## Disclaimer / Disclosures

### ANALYST CERTIFICATION

I, Mrs. Vaishali Parekh B.com, Research Analyst, author and the name subscribed to this report, hereby certify that all of the views expressed in this research report accurately reflect our views about the subject issuer(s) or securities. We also certify that no part of our compensation was, is, or will be directly or indirectly related to the specific recommendation(s) or view(s) in this report.

Terms & conditions and other disclosures:

Prabhudas Lilladher Pvt. Ltd, Mumbai, India (hereinafter referred to as "PL") is engaged in the business of Stock Broking, Portfolio Manager, Depository Participant and distribution for third party financial products. PL is a subsidiary of Prabhudas Lilladher Advisory Services Pvt Ltd. which has its various subsidiaries engaged in business of commodity broking, investment banking, financial services (margin funding) and distribution of third party financial/other products, details in respect of which are available at [www.plindia.com](http://www.plindia.com)

This document has been prepared by the Research Division of PL and is meant for use by the recipient only as information and is not for circulation. This document is not to be reported or copied or made available to others without prior permission of PL. It should not be considered or taken as an offer to sell or a solicitation to buy or sell any security.

The information contained in this report has been obtained from sources that are considered to be reliable. However, PL has not independently verified the accuracy or completeness of the same. Neither PL nor any of its affiliates, its directors or its employees accepts any responsibility of whatsoever nature for the information, statements and opinion given, made available or expressed herein or for any omission therein.

Recipients of this report should be aware that past performance is not necessarily a guide to future performance and value of investments can go down as well. The suitability or otherwise of any investments will depend upon the recipient's particular circumstances and, in case of doubt, advice should be sought from an independent expert/advisor.

Either PL or its affiliates or its directors or its employees or its representatives or its clients or their relatives may have position(s), make market, act as principal or engage in transactions of securities of companies referred to in this report and they may have used the research material prior to publication.

PL may from time to time solicit or perform investment banking or other services for any company mentioned in this document.

PL is registered as Research Analyst under Securities and Exchange Board of India (Research Analysts) Regulations, 2014 PL submits that no material disciplinary action has been taken on us by any Regulatory Authority impacting Equity Research Analysis activities.

PL or its research analysts or its associates or his relatives do not have any financial interest in the subject company.

PL or its research analysts or its associates or his relatives do not have actual/beneficial ownership of one per cent or more securities of the subject company at the end of the month immediately preceding the date of publication of the research report.

PL or its research analysts or its associates or his relatives do not have any material conflict of interest at the time of publication of the research report.

PL or its associates might have received compensation from the subject company in the past twelve months.

PL or its associates might have managed or co-managed public offering of securities for the subject company in the past twelve months or mandated by the subject company for any other assignment in the past twelve months.

PL or its associates might have received any compensation for investment banking or merchant banking or brokerage services from the subject company in the past twelve months.

PL or its associates might have received any compensation for products or services other than investment banking or merchant banking or brokerage services from the subject company in the past twelve months PL or its associates might have received any compensation or other benefits from the subject company or third party in connection with the research report.

PL encourages independence in research report preparation and strives to minimize conflict in preparation of research report. PL or its analysts did not receive any compensation or other benefits from the subject Company or third party in connection with the preparation of the research report. PL or its Research Analysts do not have any material conflict of interest at the time of publication of this report.

It is confirmed that Mrs.Vaishali Parekh B.com, Research Analyst of this report has not received any compensation from the companies mentioned in the report in the preceding twelve months compensation of our Research Analysts is not based on any specific merchant banking, investment banking or brokerage service transactions.

The Research analysts for this report certifies that all of the views expressed in this report accurately reflect his or her personal views about the subject company or companies and its or their securities, and no part of his or her compensation was, is or will be, directly or indirectly related to specific recommendations or views expressed in this report.

The research analysts for this report has not served as an officer, director or employee of the subject company PL or its research analysts have not engaged in market making activity for the subject company

Our sales people, traders, and other professionals or affiliates may provide oral or written market commentary or trading strategies to our clients that reflect opinions that are contrary to the opinions expressed herein, and our proprietary trading and investing businesses may make investment decisions that are inconsistent with the recommendations expressed herein. In reviewing these materials, you should be aware that any or all of the foregoing, among other things, may give rise to real or potential conflicts of interest.

PL and its associates, their directors and employees may (a) from time to time, have a long or short position in, and buy or sell the securities of the subject company or (b) be engaged in any other transaction involving such securities and earn brokerage or other compensation or act as a market maker in the financial instruments of the subject company or act as an advisor or lender/borrower to the subject company or may have any other potential conflict of interests with respect to any recommendation and other related information and opinions.