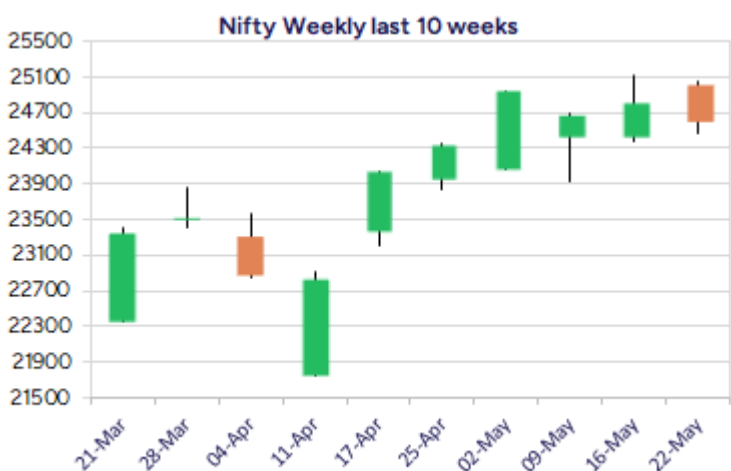
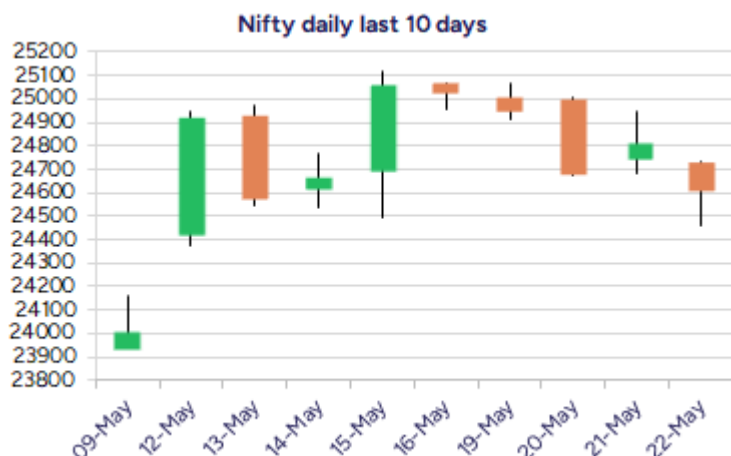


Date: 22nd May 2025

* Sensex 80951.99 -644.64

* Nifty 24609.70 -203.75

* Bank Nifty 54941.30 -133.800



*Blue candle → Close rate > Open rate * Red candle → Close rate < Open rate

Market Preview

Nifty retests 24500 zone; witnesses pullback

Nifty amid a highly volatile session witnessed a gap down opening and retested the important support of 24500 level during the intraday session to end near the 24600 zone witnessing some recovery in the fag end. BankNifty once again recovered from the 54500 zone amid the fluctuations and closed near the 54900 level finding consolidation. The market breadth was overall flat with the advance decline indicating a almost neutral ratio at close.

Market Forecast

Nifty daily range 24450-24800

Nifty, with a gap down opening session witnessed a volatile session and breached below the important support of 24500 zone but managed to recover in the final hours to close the session near 24600 level with bias still maintained positive overall. The index would need to sustain above the 24500 zone failing which the next crucial support would be the 200 period MA at around 24000 level and on the upside a decisive breach above the 25000 zone is necessary to trigger for fresh upward move in the coming days.

BankNifty, continue to hover near the 55000 zone with no major directional witnessed for quite some time and as mentioned earlier, is gripped between the 55700 and 54400 levels which needs to be breached on either side to trigger for fresh directional move. The overall bias is maintained cautiously positive with most of the frontline banking stocks finding consolidation with bias overall maintained positive.

The support for the day is seen at 24450 levels while the resistance is seen at 24800 levels. BankNifty would have the daily range of 54500-55600 levels.

Indices	Period	Closing	% Chng	Trend	Reversal	2 Sup	1 Sup	Pivot	1 Res	2 Res
Nifty	Daily	24609.70	-0.82%	-3	25011.95	24328	24469	24603	24744	24878
	Weekly	25019.80	4.21%	9	24096.50	24132	24576	24845	25289	25558
	Monthly	24334.20	3.46%	-7	24274.15	20798	22566	23512	25279	26225
Bank Nifty	Daily	54941.30	-0.24%	-3	55267.70	54419	54680	54838	55099	55258
	Weekly	55354.90	3.28%	1	54752.45	54063	54709	55099	55745	56136
	Monthly	55087.15	6.83%	1	53311.35	46522	50805	53451	57733	60379
Sensex	Daily	80951.99	-0.79%	-4	82264.45	80088	80520	80922	81354	81755
	Weekly	82330.59	3.62%	9	79418.00	79983	81157	81937	83111	83892
	Monthly	80242.24	3.65%	-7	80009.00	68245	74243	77449	83447	86653

Daily Trend turned Up			
Scrip Name	LCP	Curr Trnd	Reversal
BERGEPAIN	566.4	-2	566.2
BHARTIARTEL	1831.4	-10	1826.65
BOSCH	31740	-2	31704.55
FORTIS	723.8	-3	688.45
GNFC	509.2	-1	505.5
IBULHSGFIN	126.07	-2	125.05
INDIACEM	328.8	-1	323.75
INDUSINDBK	785	-12	776.5
NAVINFLUOR	4321.2	-10	4280.4
PAGEIND	47865	-2	47641.5
TVSMOTOR	2802.8	-2	2798.85
WABAG	1526.2	-1	1414.2

* Trends turned Up after a significant period

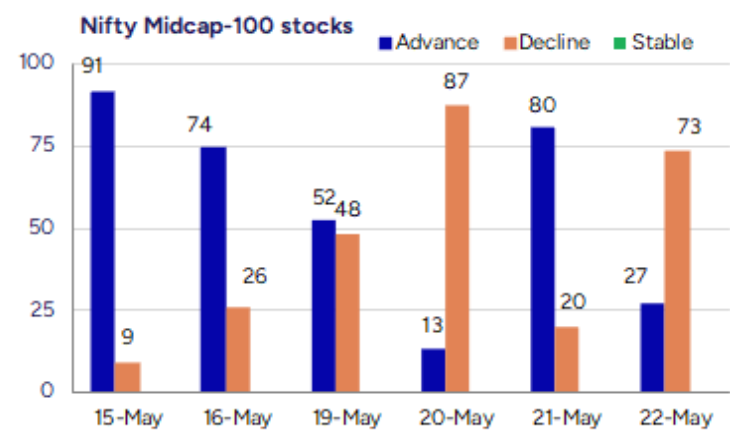
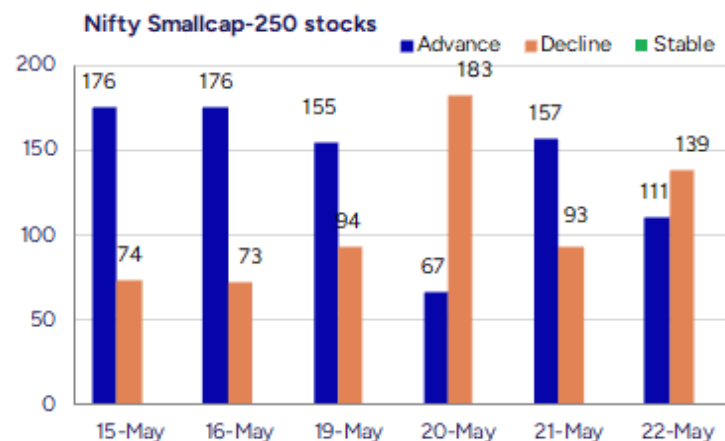
Daily Trend turned Down			
Scrip Name	LCP	Curr Trnd	Reversal
AJANTPHARM	2573.5	7	2610.45
ALKEM	5299	7	5325.85
CANFINHOME	745	8	748.45
CHOLAFIN	1626.9	8	1636.1
COALINDIA	398.85	8	405.55
GODREJPROP	2164.5	6	2174.65
HINDALCO	649.55	8	658.7
METROPOLIS	1627.4	2	1647.8
NAM-INDIA	719.85	8	738.9
OIL	418.35	6	423.65
ONGC	241.67	8	247.55
PEL	1090.75	11	1123.85

* Trends turned Down after a significant period

Gainers - Losers (Nifty 500 Stocks)

Gainers			
Company Name	Last Price	% Gain	Volume
Cosmo First	794.7	20	1893187
Nahar Poly Film	265.65	20	228755
Jay BharatMarut	84.18	20	525242
Ramco System	440.25	19.99	1821127
Vilas Transcore	460.1	19.97	369500
HP Telecom Ind	195.6	17.76	43200
Alicon Castallo	901.5	16.14	458575

Losers			
Company Name	Last Price	% Loss	Volume
R K Swamy	185.75	-11.79	517654
Vadilal Ind	6007	-11.26	109422
Tridhya Tech	22.25	-11	189000
Wise Travel	142.6	-10	189500
Giriraj Civil D	338.25	-9.27	20000
Lincoln Pharma	549.8	-9.21	337953
Paramount Comm	56.26	-8.65	5846034



Nifty Daily chart with RSI indicator



BankNifty Daily chart with RSI indicator

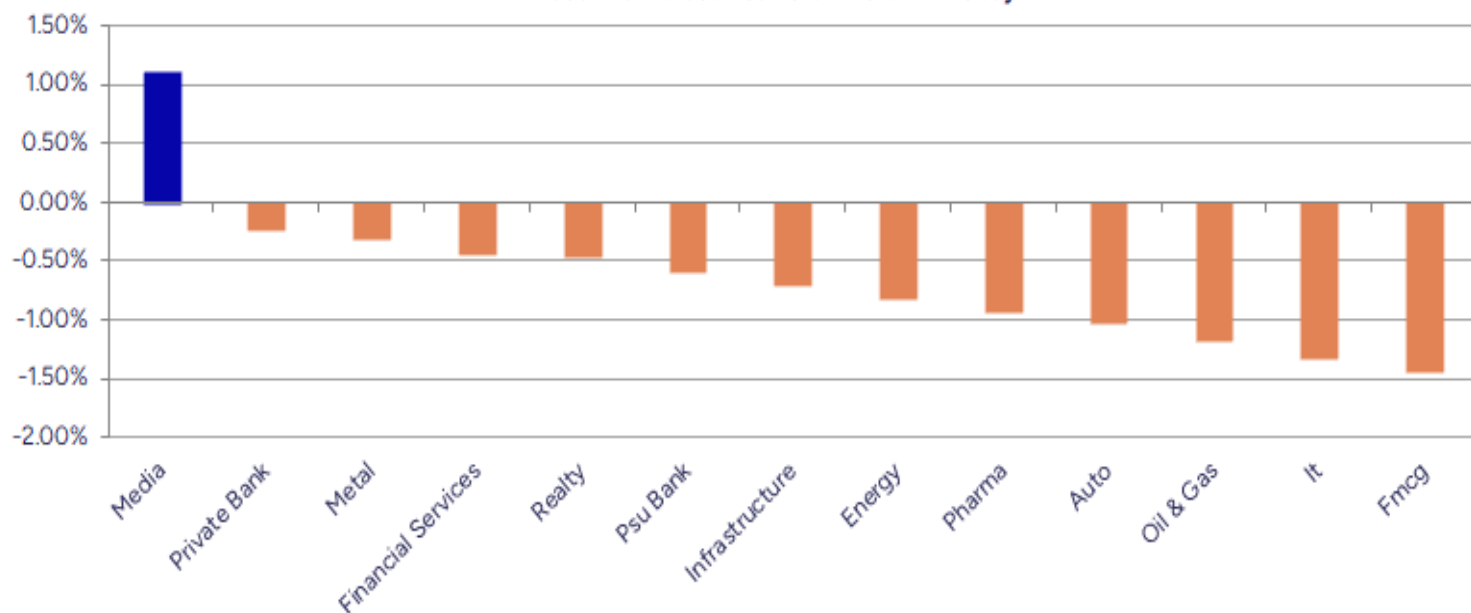


Breakouts - Cross above 200 DMA				Breakdown - Cross below 200 DMA			
Company Name	LCP	Change %	200 DMA	Company Name	LCP	Change %	200 DMA
Ramco System	440.25	13.86	386.67	GMM Pfaudler	1171.3	-5.04	1233.43
Vilas Transcore	460.1	10.09	417.94	Indo Tech Trans	2276.1	-4.87	2392.74
Nahar Poly Film	265.65	8.54	244.74	Eurotex	13.41	-3.39	13.88
Carysil	780.5	7.55	725.74	Zodiac Energy	499.65	-3.21	516.2
Jubilant Pharmo	1069.15	5.42	1014.19	HYBRIDFIN	12.6	-3.08	13
Cosmo First	794.7	5.29	754.8	Mankind Pharma	2439.2	-2.69	2506.58
TataTeleservice	76.68	3.61	74.01	Gulf Oil Lubric	1170.5	-2.50	1200.55
Butterfly	801.05	3.15	776.62	Torrent Pharma	3212	-1.97	3276.65
Pfizer	5139.4	3.14	4983.15	Orissa Bengal C	55	-1.77	55.99
All E Technolog	453.2	3.11	439.52	GeeCee Ventures	395.4	-1.43	401.15
Reliable Data S	80.75	2.91	78.47	Orient Electric	233.17	-1.24	236.1
Va Tech Wabag	1526.2	2.77	1485.11	United Brewerie	1995.1	-1.23	2020.04
IBL Finance	60	2.65	58.45	Chennai Petro	684.2	-0.97	690.9
ILandFS Engg	40.65	2.50	39.66	Steel City Secu	100.39	-0.83	101.23
S H Kelkar	240.22	2.37	234.67	Kotak NiftyInd	115.47	-0.82	116.43
NDTV	162.21	2.19	158.73	CESC	168.21	-0.70	169.4
India Nippon	695.5	2.10	681.19	Kirloskar Bros	1862.2	-0.66	1874.63
Dodla	1190	2.10	1165.53	Sejal Glass	446.35	-0.59	449.01

* Stocks crossing above its Simple Moving Average (200DMA)

* Stocks crossing below its Simple Moving Average (200DMA)

Sectoral Indices - Gainers Losers for the day



Stocks witnessing a volume surge as compared to their 5 day average volume

Watch out for the stocks that have seen a huge spurt in its share price over the last three days

Volume Shockers - NSE					
Company name	LCP	% Chg	Volume	Avg Vol *	% Chg
Diamond Power	94.99	-0.28	6800	12018	824063
SecMark Consult	156.49	4.04	2849	3468	101635
Prince Pipes	307.85	4.02	171934	3265	5785389
Remsons Ind	149.11	2.55	21094	3218	699911
Premier Explo	604.35	3.42	77069	3091	2459022
Ramco System	440.25	19.99	57976	3038	1819361
VRL Logistics	588.65	5.3	150897	2993	4667031
Unichem Labs	624.8	2.71	21702	2809	631349
KCK Industries	40.6	4.77	13600	2290	325000
Jai Balaji Ind	110.19	4.09	54390	2270	1288829
Paras Defence	1611.1	2.31	74764	2206	1723809
Kaya	339.15	0.86	6240	1720	113551
Garden Reach Sh	2728.1	9.1	871209	1602	14824009
Shipping Corp	195.16	7.35	2061581	1504	33065021
Reliable Data S	80.5	4.74	9729	1489	154636
Relaxo Footwear	438.05	1.42	68370	1487	1084776
Tarmat	53.6	8.57	46267	1379	684266
Alicon Castallo	904	16.46	28441	1358	414701
BEW Engineering	192	-1.79	1125	1278	15500
TD Power System	485.1	-1.75	685088	1273	9404107

* the Average Volume of last 5 days

Price Shockers - NSE				
Company name	LCP	Prv Close	% Chg	Volume
HP Telecom Ind	195.6	131	49.31	43200
Honda India PP	3028.4	2329.6	30	90989
HLE Glascoat	388.75	302.2	28.64	302603
TataTeleservice	76.68	60.27	27.23	272685906
Atlas Cycles	122.69	96.58	27.03	6362
AZZ Infra Eng	17.03	13.96	21.99	546074
Tatva Chintan	920.55	755.25	21.89	138766
Kapston Service	253.79	213.1	19.09	36075
A B Infrabuild	132.46	111.88	18.39	74944
Jay BharatMarut	84.18	71.2	18.23	525692
Carysil	780.5	664.35	17.48	2117615
The Grob Tea	1095	940.85	16.38	26226
Cosmo First	794.7	684.55	16.09	1893306
Ramco System	440.25	380.5	15.7	1822251
Alicon Castallo	901.5	779.45	15.66	458687
Unilinfo Telecom	18.21	15.75	15.62	4978
Bohra Industrie	35.21	30.46	15.59	20658
Nahar Poly Film	265.65	230.05	15.47	228755
Thomas Cook	168.99	146.7	15.19	2511840
Pfizer	5139.4	4468	15.03	116567

* the % price rise of the last 3 days

Symbol	LTP	Chng	% Chng	Volume (lacs)	Turnover (crs.)	52w High	Diff with 52w H	52w Low	Diff with 52w L	365 days % chng	30 days % chng
NIFTY 50	24609.70	-203.75	-0.82%	4032.54	30578.81	26277.35	6.35%	21281.45	15.64%	2.85%	10.14%
ADANIENT	2496.60	-3.80	-0.15%	9.07	226.00	3743.90	33.32%	2025.00	23.29%	2.36%	-19.79%
ADANIPTS	1376.10	-8.50	-0.61%	31.86	439.78	1621.40	15.13%	995.65	38.21%	11.38%	-0.06%
APOLLOHOSP	6969.00	-15.00	-0.21%	2.30	159.65	7545.35	7.64%	5693.20	22.41%	-2.22%	17.41%
ASIANPAINT	2297.60	-14.80	-0.64%	9.17	210.52	3394.90	32.32%	2124.75	8.14%	-5.42%	-18.91%
AXISBANK	1187.10	-10.70	-0.89%	47.96	568.17	1339.65	11.39%	933.50	27.17%	-2.06%	5.29%
BAJAJ-AUTO	8744.00	56.50	0.65%	9.17	793.42	12774.00	31.55%	7089.35	23.34%	5.33%	-1.51%
BAJAJFINSV	2003.80	-33.50	-1.64%	11.78	236.08	2135.00	6.15%	1419.05	41.21%	-3.15%	28.74%
BAJFINANCE	9150.50	-47.00	-0.51%	6.16	562.84	9660.00	5.27%	6375.70	43.52%	-0.82%	36.40%
BEL	383.50	0.50	0.13%	434.87	1665.67	386.75	0.84%	230.00	66.74%	27.69%	39.70%
BHARTIARTL	1831.00	8.50	0.47%	64.97	1188.90	1917.00	4.49%	1219.05	50.20%	-3.23%	35.57%
CIPLA	1461.20	-21.20	-1.43%	18.05	265.36	1702.05	14.15%	1335.00	9.45%	-1.90%	2.78%
COALINDIA	399.50	-5.85	-1.44%	79.37	315.94	543.55	26.50%	349.25	14.39%	1.21%	-17.39%
DRREDDY	1225.00	0.30	0.02%	22.61	276.05	1421.49	13.82%	1020.00	20.10%	4.02%	-78.81%
EICHERMOT	5410.00	1.00	0.02%	4.62	247.56	5906.50	8.41%	4253.85	27.18%	-6.91%	15.75%
GRASIM	2684.00	-22.90	-0.85%	5.41	144.52	2877.75	6.73%	2171.60	23.60%	-1.81%	10.64%
HCLTECH	1640.00	-12.00	-0.73%	22.02	358.85	2012.20	18.50%	1235.00	32.79%	11.47%	23.11%
HDFCBANK	1924.00	-2.80	-0.15%	106.53	2039.93	1978.90	2.77%	1448.15	32.86%	-0.02%	32.08%
HDFCLIFE	757.60	-2.10	-0.28%	23.92	180.73	762.05	0.58%	511.40	48.14%	6.67%	34.32%
HEROMOTOCO	4272.10	8.30	0.19%	3.95	167.83	6246.25	31.61%	3344.00	27.75%	8.85%	-15.63%
HINDALCO	649.55	-13.45	-2.03%	67.85	441.06	772.65	15.93%	546.45	18.87%	6.59%	-4.41%
HINDUNILVR	2330.70	-33.20	-1.40%	24.24	564.48	3035.00	23.21%	2136.00	9.12%	0.55%	2.30%
ICICIBANK	1440.00	-4.70	-0.33%	72.46	1040.23	1459.70	1.35%	1051.05	37.01%	2.48%	28.88%
INDUSINDBK	783.50	13.55	1.76%	434.77	3360.54	1550.00	49.45%	606.00	29.29%	-7.03%	-45.26%
INFY	1551.00	-17.50	-1.12%	61.59	953.90	2006.45	22.70%	1307.00	18.67%	8.10%	9.37%
ITC	425.50	-7.50	-1.73%	194.52	827.72	528.50	19.49%	390.15	9.06%	2.40%	-0.41%
JIOFIN	274.80	0.45	0.16%	132.07	363.13	376.00	26.91%	198.65	38.33%	11.35%	-23.31%
JSWSTEEL	1008.00	7.10	0.71%	12.83	128.17	1074.90	6.22%	823.80	22.36%	-3.20%	8.39%
KOTAKBANK	2073.00	1.70	0.08%	32.89	677.69	2301.90	9.94%	1602.45	29.36%	-7.59%	21.97%
LT	3553.40	-35.60	-0.99%	15.97	567.88	3963.50	10.35%	2965.30	19.83%	9.40%	4.30%
M&M	3016.00	-74.70	-2.42%	38.71	1165.15	3270.95	7.79%	2425.00	24.37%	11.82%	22.52%
MARUTI	12440.00	-175.00	-1.39%	4.35	541.46	13680.00	9.06%	10725.00	15.99%	7.41%	1.14%
NESTLEIND	2358.00	-34.60	-1.45%	10.81	254.78	2778.00	15.12%	2110.00	11.75%	-0.28%	-2.77%
NTPC	341.85	-4.30	-1.24%	87.18	297.45	448.45	23.77%	292.80	16.75%	-5.05%	-6.95%
ONGC	242.10	-6.58	-2.65%	185.02	450.07	345.00	29.83%	205.00	18.10%	-0.44%	-11.22%
POWERGRID	292.00	-4.15	-1.40%	261.59	756.93	366.25	20.27%	247.30	18.08%	-7.45%	-9.06%
RELIANCE	1411.50	-17.70	-1.24%	121.34	1707.10	1608.80	12.26%	1114.85	26.61%	10.32%	-50.24%
SBILIFE	1762.00	-1.90	-0.11%	11.03	193.23	1936.00	8.99%	1307.70	34.74%	8.31%	23.38%
SBIN	785.80	-1.30	-0.17%	73.56	577.03	912.00	13.84%	680.00	15.56%	-3.62%	-5.24%
SHRIRAMFIN	650.00	-8.00	-1.22%	68.41	443.28	730.45	11.01%	438.60	48.20%	-6.40%	-72.27%
SUNPHARMA	1724.70	-7.10	-0.41%	26.71	458.66	1960.35	12.02%	1377.20	25.23%	-0.75%	12.39%
TATACONSUM	1128.50	-10.30	-0.90%	14.14	159.32	1250.10	9.73%	882.90	27.82%	1.59%	4.10%
TATAMOTORS	718.50	-8.30	-1.14%	100.47	719.91	1179.00	39.06%	535.75	34.11%	15.36%	-23.60%
TATASTEEL	161.50	-0.14	-0.09%	606.91	983.32	184.60	12.51%	122.62	31.71%	16.14%	-7.29%
TCS	3483.40	-42.40	-1.20%	20.34	706.65	4592.25	24.15%	3056.05	13.98%	6.15%	-7.71%
TECHM	1572.00	-26.20	-1.64%	17.89	280.38	1807.70	13.04%	1193.65	31.70%	16.36%	20.72%
TITAN	3550.80	-29.70	-0.83%	7.10	251.31	3867.00	8.18%	2925.00	21.39%	7.33%	6.03%
TRENT	5346.00	-97.50	-1.79%	9.62	514.51	8345.00	35.94%	4196.00	27.41%	1.56%	16.63%
ULTRACEMCO	11677.00	11.00	0.09%	1.75	204.05	12339.00	5.37%	9534.95	22.47%	-2.25%	19.17%
WIPRO	246.05	-4.87	-1.94%	114.69	282.79	324.60	24.20%	208.50	18.01%	5.23%	-45.56%
ETERNAL	229.87	-0.10	-0.04%	287.96	658.85	304.70	24.56%	146.30	57.12%	#VALUE!	#VALUE!

Disclaimer / Disclosures

ANALYST CERTIFICATION

I, Mrs. Vaishali Parekh B.com, Research Analyst, author and the name subscribed to this report, hereby certify that all of the views expressed in this research report accurately reflect our views about the subject issuer(s) or securities. We also certify that no part of our compensation was, is, or will be directly or indirectly related to the specific recommendation(s) or view(s) in this report.

Terms & conditions and other disclosures:

Prabhudas Lilladher Pvt. Ltd, Mumbai, India (hereinafter referred to as "PL") is engaged in the business of Stock Broking, Portfolio Manager, Depository Participant and distribution for third party financial products. PL is a subsidiary of Prabhudas Lilladher Advisory Services Pvt Ltd. which has its various subsidiaries engaged in business of commodity broking, investment banking, financial services (margin funding) and distribution of third party financial/other products, details in respect of which are available at www.plindia.com

This document has been prepared by the Research Division of PL and is meant for use by the recipient only as information and is not for circulation. This document is not to be reported or copied or made available to others without prior permission of PL. It should not be considered or taken as an offer to sell or a solicitation to buy or sell any security.

The information contained in this report has been obtained from sources that are considered to be reliable. However, PL has not independently verified the accuracy or completeness of the same. Neither PL nor any of its affiliates, its directors or its employees accepts any responsibility of whatsoever nature for the information, statements and opinion given, made available or expressed herein or for any omission therein.

Recipients of this report should be aware that past performance is not necessarily a guide to future performance and value of investments can go down as well. The suitability or otherwise of any investments will depend upon the recipient's particular circumstances and, in case of doubt, advice should be sought from an independent expert/advisor.

Either PL or its affiliates or its directors or its employees or its representatives or its clients or their relatives may have position(s), make market, act as principal or engage in transactions of securities of companies referred to in this report and they may have used the research material prior to publication.

PL may from time to time solicit or perform investment banking or other services for any company mentioned in this document.

PL is registered as Research Analyst under Securities and Exchange Board of India (Research Analysts) Regulations, 2014 PL submits that no material disciplinary action has been taken on us by any Regulatory Authority impacting Equity Research Analysis activities.

PL or its research analysts or its associates or his relatives do not have any financial interest in the subject company.

PL or its research analysts or its associates or his relatives do not have actual/beneficial ownership of one per cent or more securities of the subject company at the end of the month immediately preceding the date of publication of the research report.

PL or its research analysts or its associates or his relatives do not have any material conflict of interest at the time of publication of the research report.

PL or its associates might have received compensation from the subject company in the past twelve months.

PL or its associates might have managed or co-managed public offering of securities for the subject company in the past twelve months or mandated by the subject company for any other assignment in the past twelve months.

PL or its associates might have received any compensation for investment banking or merchant banking or brokerage services from the subject company in the past twelve months.

PL or its associates might have received any compensation for products or services other than investment banking or merchant banking or brokerage services from the subject company in the past twelve months PL or its associates might have received any compensation or other benefits from the subject company or third party in connection with the research report.

PL encourages independence in research report preparation and strives to minimize conflict in preparation of research report. PL or its analysts did not receive any compensation or other benefits from the subject Company or third party in connection with the preparation of the research report. PL or its Research Analysts do not have any material conflict of interest at the time of publication of this report.

It is confirmed that Mrs.Vaishali Parekh B.com, Research Analyst of this report has not received any compensation from the companies mentioned in the report in the preceding twelve months compensation of our Research Analysts is not based on any specific merchant banking, investment banking or brokerage service transactions.

The Research analysts for this report certifies that all of the views expressed in this report accurately reflect his or her personal views about the subject company or companies and its or their securities, and no part of his or her compensation was, is or will be, directly or indirectly related to specific recommendations or views expressed in this report.

The research analysts for this report has not served as an officer, director or employee of the subject company PL or its research analysts have not engaged in market making activity for the subject company

Our sales people, traders, and other professionals or affiliates may provide oral or written market commentary or trading strategies to our clients that reflect opinions that are contrary to the opinions expressed herein, and our proprietary trading and investing businesses may make investment decisions that are inconsistent with the recommendations expressed herein. In reviewing these materials, you should be aware that any or all of the foregoing, among other things, may give rise to real or potential conflicts of interest.

PL and its associates, their directors and employees may (a) from time to time, have a long or short position in, and buy or sell the securities of the subject company or (b) be engaged in any other transaction involving such securities and earn brokerage or other compensation or act as a market maker in the financial instruments of the subject company or act as an advisor or lender/borrower to the subject company or may have any other potential conflict of interests with respect to any recommendation and other related information and opinions.