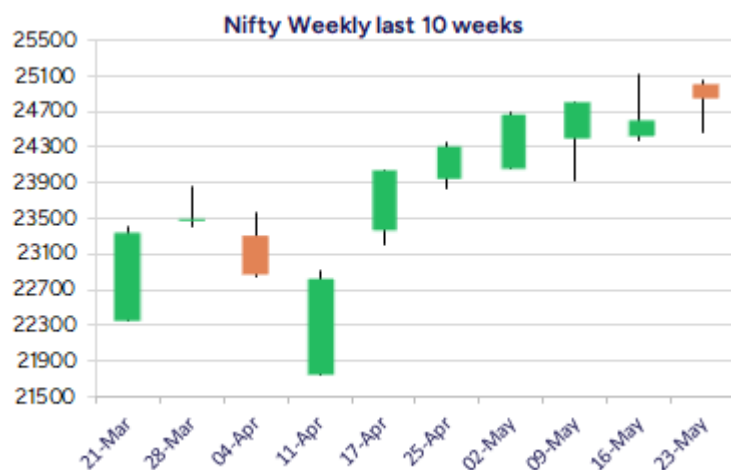
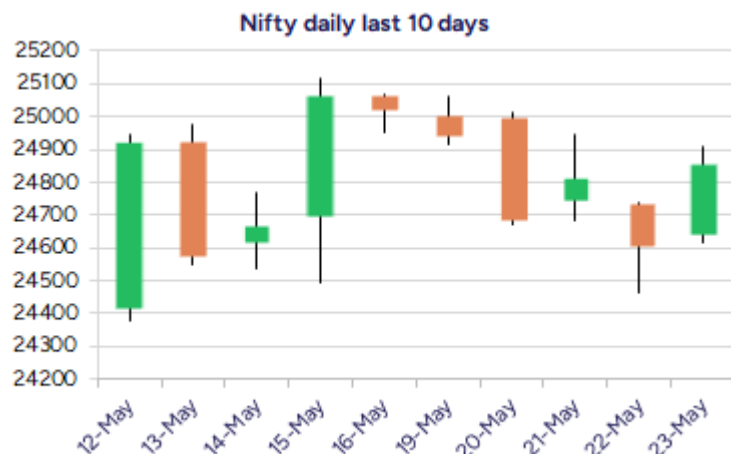


Date: 26th May 2025

* Sensex 81721.08 + 769.09

* Nifty 24853.15 + 243.45

* Bank Nifty 55398.25 + 456.95



*Blue candle → Close rate > Open rate * Red candle → Close rate < Open rate

Market Preview

Nifty regains strength; aims for 25500 mark

Nifty has recovered strongly from the low made near 24460 zone to gather strength and can anticipate for breaching above the 25000 zone in the coming sessions with bias improving. BankNifty has shown strength with a positive bullish candle on the daily chart to anticipate further rise and breach above the hurdle of 55700 zone. The market breadth was strong with the advance decline indicating a ratio of 2:1 at close.

Market Forecast

Nifty daily range 24700-25100

Nifty, has indicated a strong pullback from near the 24500 zone with a bullish candle formation on the daily chart with overall bias maintained and can anticipate for further rise in the coming sessions with upside targets 25400 and 25600 levels expected. The index would have the important and crucial support zone near 24500 level as mentioned earlier and a decisive breach above 25000 zone shall trigger for fresh upward movement with the broader markets also showing active participation to support the benchmark index.

BankNifty, has indicated a strong bullish candle formation with bias improving as most of the frontline banking stocks have shown positive signs for further upward move accompanied by most of the PSU banks which are looking good. The index needs to breach above the 55700 zone decisively as mentioned earlier, to trigger for fresh upward move having targets of 57200 and 58500 levels possible in the coming days. The support for the day is seen at 24700 levels while the resistance is seen at 25100 levels. BankNifty would have the daily range of 55000-56000 levels.

Indices	Period	Closing	% Chng	Trend	Reversal	2 Sup	1 Sup	Pivot	1 Res	2 Res
Nifty	Daily	24853.15	0.99%	-4	24977.95	24497	24675	24792	24970	25087
	Weekly	24853.15	-0.67%	10	24391.15	24196	24524	24794	25122	25392
	Monthly	24334.20	3.46%	-7	24274.15	20798	22566	23512	25279	26225
Bank Nifty	Daily	55398.25	0.83%	1	55338.55	54645	55021	55231	55608	55818
	Weekly	55398.25	0.08%	2	55057.50	54109	54754	55223	55868	56337
	Monthly	55087.15	6.83%	1	53311.35	46522	50805	53451	57733	60379
Sensex	Daily	81721.08	0.95%	-5	82129.45	80500	81110	81508	82119	82516
	Weekly	81721.08	-0.74%	10	80361.90	79616	80669	81546	82598	83475
	Monthly	80242.24	3.65%	-7	80009.00	68245	74243	77449	83447	86653

Daily Trend turned Up

Scrip Name	LCP	Curr Trnd	Reversal
ADANIENT	2540	-2	2525.25
AUBANK	696.2	-7	692.15
AXISBANK	1210.1	-3	1205.45
ABREAL	2169.8	-2	2149.5
DRREDDY	1230.1	-2	1229.75
HDFCBANK	1933.6	-3	1930.05
ITC	436.3	-2	434.15
KOTMAHBNK	2100.8	-3	2085.05
MAITHANALL	1017.75	-2	1005.3
POWERGRID	298.1	-3	296.75
RAYMOND	634.7	-8	597.9
SBILIFE	1798.7	-3	1776.65

* Trends turned Up after a significant period

Daily Trend turned Down

Scrip Name	LCP	Curr Trnd	Reversal
CASTROLIND	208.16	2	209.3
CONCOR	720.9	9	730.55
DIVISLAB	6483	7	6507.4
INDIAMART	2368.1	6	2376.5
INTELLECT	1082.1	12	1098.95
IRBINFRA	50.9	2	51.3
JMFINANCIL	120.42	9	122.05
JSWENERGY	496.6	9	500.8
CUMMINS	2940.4	9	2977.25
MAHSEAMLES	690.55	9	695.5
SUNPHARMA	1683.6	2	1720.7
TVTODAY	171.42	11	178.75

* Trends turned Down after a significant period

Gainers - Losers (Nifty 500 Stocks)

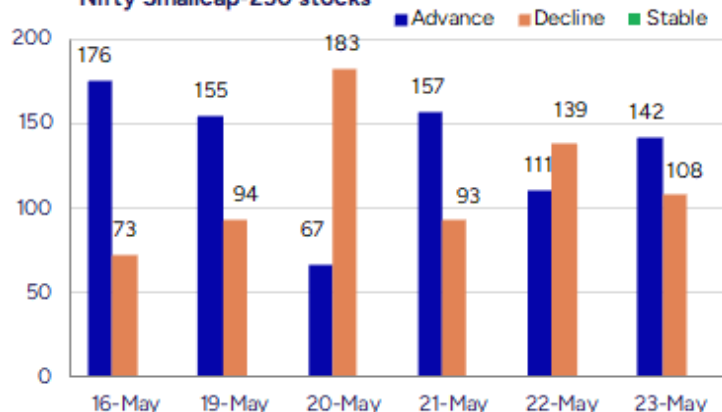
Gainers

Company Name	Last Price	% Gain	Volume
Apollo Pipes	489.1	20	1137253
Credo Brands Ma	173.84	20	2544573
Sigma Solve	380.1	20	196508
Honasa Consumer	329.25	19.66	24292281
Cosmo First	940.7	18.37	2819956
Reliance Power	51.9	16.39	428618878
Lypsa Gems	7.58	13.13	503948

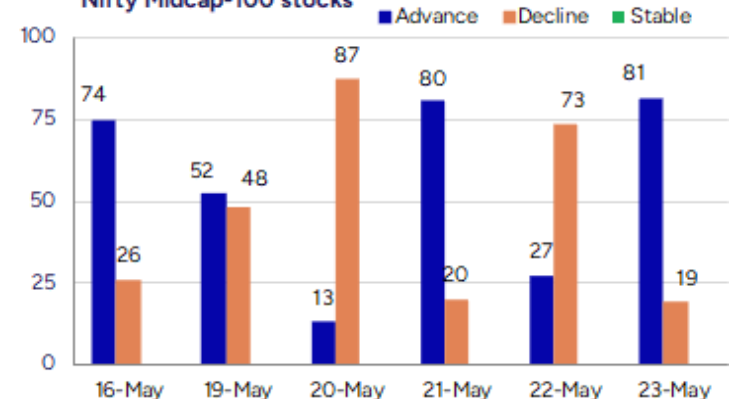
Losers

Company Name	Last Price	% Loss	Volume
Vishnusurya	173.45	-11.95	190000
Madhusudan Masa	162.25	-11.77	107000
Chetana Educati	99.45	-10.41	139200
Premier Explo	546.2	-9.99	747264
GP Eco Solution	313.4	-9.9	162000
Kriti Nutrients	110.32	-8.92	225422
Saroja Pharma	41	-8.89	11200

Nifty Smallcap-250 stocks



Nifty Midcap-100 stocks



Nifty Daily chart with RSI indicator



BankNifty Daily chart with RSI indicator

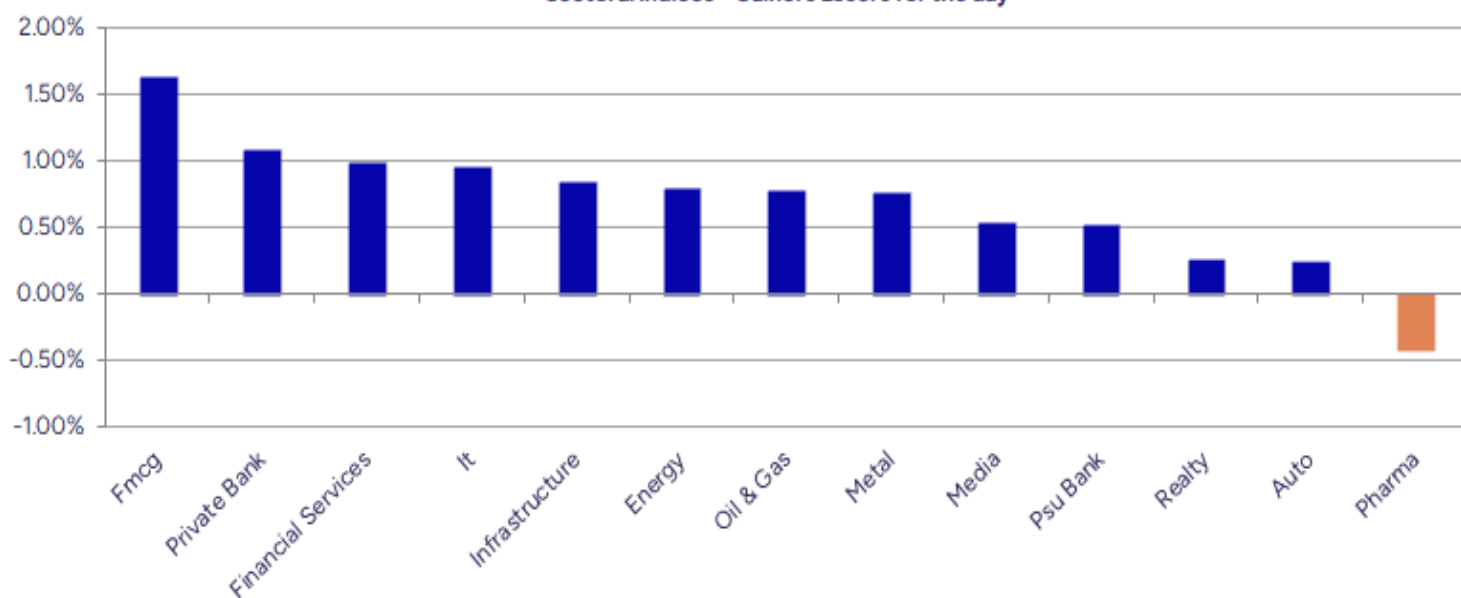


Breakouts - Cross above 200 DMA				Breakdown - Cross below 200 DMA			
Company Name	LCP	Change %	200 DMA	Company Name	LCP	Change %	200 DMA
Sigma Solve	380.1	14.66	331.5	Madhusudan Masa	162.25	-11.30	182.91
HPL Electric &	548.5	8.68	504.67	All E Technolog	421.1	-4.26	439.85
Linc	152.41	7.10	142.31	Bharat Gears	89.07	-4.03	92.81
Total Transport	84.38	6.10	79.53	Windlas	917.4	-3.43	949.99
Kernex Micro	993.75	5.96	937.83	The Grob Tea	1005.75	-2.97	1036.51
Credo Brands Ma	173.84	5.44	164.87	Good Luck	879.25	-2.75	904.11
Apollo Pipes	489.1	3.89	470.79	Beta Drugs	1720.75	-1.94	1754.72
Honasa Consumer	329.25	3.71	317.46	Butterfly	764.75	-1.48	776.24
Shilpa	783.35	3.50	756.85	Gokaldas Export	928.05	-1.33	940.54
Gulf Oil Lubric	1236.9	3.04	1200.37	Arvind	366.15	-1.30	370.96
Talbro's Auto	304.25	2.97	295.48	Poly Medicure	2406.2	-1.06	2432.05
Clean Science	1433.2	2.92	1392.58	Honda India PP	2938.2	-0.74	2959.96
Sundrop Brands	885.25	2.89	860.35	Go Digit	323.7	-0.68	325.92
Tarsons Product	407.7	2.56	397.51	Lakshmi Finance	220.1	-0.38	220.94
TIPSFILMS	559.5	2.48	545.98	PSP Projects	645.75	-0.35	648.04
Megatherm Induc	334.15	2.31	326.62	Zodiac Clothing	114.67	-0.34	115.06
Lords Chloro	152.95	2.30	149.51	ILandFS Engg	39.6	-0.30	39.72
Swaraj Suiting	237.75	2.24	232.55	ABSLLIQUID	999.99	0.00	1000

* Stocks crossing above its Simple Moving Average (200DMA)

* Stocks crossing below its Simple Moving Average (200DMA)

Sectoral Indices - Gainers Losers for the day



Stocks witnessing a volume surge as compared to their 5 day average volume

Watch out for the stocks that have seen a huge spurt in its share price over the last three days

Volume Shockers - NSE					
Company name	LCP	% Chg	Volume	Avg Vol *	% Chg
Praxis Home Ret	14.13	4.98	8568170	62438	13623
Diamond Power	94.65	-0.33	359505	6800	5187
TBO Tek	1320.9	10.17	4672087	91233	5021
SecMark Consult	160.17	0.89	131199	2849	4506
Sky Gold	355.45	4.36	1130523	25989	4250
HEG	495.3	3.14	3007083	80062	3656
Centum Electron	2320	12.69	509219	14212	3483
Ramco System	442.75	0.57	1857351	57976	3104
JBM Auto	740.5	4.16	5689783	180877	3046
Sigma Solve	380.1	20	196508	9030	2076
Oneclick Logi.	178.05	4.86	92400	4320	2039
A2Z Infra Eng	17.32	1.7	1298582	65758	1875
Mitcon Cons	88.92	9.31	601177	31135	1831
Indo Tech Trans	2162.3	-5	305587	16132	1794
Laxmi Goldorna	554.7	2.69	20455	1094	1770
Paras Defence	1636.9	1.24	1358726	74764	1717
BSE Limited	2448	4.97	16551196	984644	1581
Jash Engineerin	580.2	3.03	440062	26774	1544
Nahar Poly Film	299.25	12.65	570492	40958	1293
Saakshi Medtech	145.05	-2.81	160800	11880	1254

* the Average Volume of last 5 days

Price Shockers - NSE				
Company name	LCP	Prv Close	% Chg	Volume
HP Telecom Ind	206.05	139.5	47.71	73200
Cosmo First	940.7	679.2	38.5	2819956
Nahar Poly Film	299.25	220.82	35.52	570492
TataTeleservice	76.72	58.23	31.75	119135846
Apollo Pipes	489.1	393.25	24.37	1137253
A2Z Infra Eng	17.32	14.09	22.92	1298582
Atlas Cycles	128.8	106.23	21.25	246766
Ramco System	442.75	373.15	18.65	1857351
Carysil	767.75	647.35	18.6	347801
Interarch Build	2151.9	1821.7	18.13	1078492
Centum Electron	2320	1994.2	16.34	509219
Total Transport	84.38	72.6	16.23	155915
Garden Reach Sh	2781.1	2394.4	16.15	7937667
Reliance Power	51.9	44.73	16.03	428618878
Alicon Castallo	898.3	776.7	15.66	56336
Silgo Retail	59.83	51.76	15.59	113903
Uniinfo Telecom	19.1	16.53	15.55	34326
Dishman Carboge	252.07	218.29	15.47	1151456
Manav Infra Pro	12.7	11	15.45	4000
A B Infrabuild	128.26	111.26	15.28	25088

* the % price rise of the last 3 days

Symbol	LTP	Chng	% Chng	Volume (lacs)	Turnover (crs.)	52w High	Diff with 52w H	52w Low	Diff with 52w L	365 days % chng	30 days % chng
NIFTY 50	24853.15	243.45	0.99%	2704.65	20200.38	26277.35	5.42%	21281.45	16.78%	1.83%	8.90%
ADANIEN	2537.00	49.40	1.99%	9.68	245.06	3743.90	32.24%	2025.00	25.28%	1.72%	-20.80%
ADANIPTS	1394.00	22.60	1.65%	17.15	238.66	1621.40	14.02%	995.65	40.01%	11.21%	-0.49%
APOLLOHOSP	7062.00	107.50	1.55%	3.21	226.68	7545.35	6.41%	5693.20	24.04%	-1.89%	18.51%
ASIANPAINT	2315.00	15.80	0.69%	4.58	106.10	3394.90	31.81%	2124.75	8.95%	-5.46%	-20.33%
AXISBANK	1209.00	20.50	1.72%	36.76	443.65	1339.65	9.75%	933.50	29.51%	-2.33%	5.55%
BAJAJ-AUTO	8740.00	6.50	0.07%	3.22	282.35	12774.00	31.58%	7089.35	23.28%	7.28%	-0.82%
BAJAJFINSV	2040.00	39.00	1.95%	10.85	220.41	2135.00	4.45%	1419.05	43.76%	-3.66%	26.33%
BAJFINANCE	9248.00	109.00	1.19%	4.25	392.51	9660.00	4.27%	6375.70	45.05%	-1.31%	35.50%
BEL	383.35	-0.05	-0.01%	376.65	1451.41	389.90	1.68%	230.00	66.67%	26.39%	35.19%
BHARTIARTL	1831.00	-0.40	-0.02%	34.61	635.26	1917.00	4.49%	1219.05	50.20%	-1.12%	35.87%
CIPLA	1483.00	14.50	0.99%	9.15	135.62	1702.05	12.87%	1335.00	11.09%	-3.91%	-0.93%
COALINDIA	401.30	2.45	0.61%	41.78	167.65	543.55	26.17%	349.25	14.90%	0.06%	-20.50%
DRREDDY	1229.00	6.80	0.56%	7.34	90.32	1421.49	13.54%	1020.00	20.49%	4.02%	-79.19%
EICHERMOT	5394.00	7.00	0.13%	2.82	152.67	5906.50	8.68%	4253.85	26.80%	-6.86%	14.73%
GRASIM	2656.00	-18.60	-0.70%	9.91	267.51	2877.75	7.71%	2171.60	22.31%	-2.72%	9.77%
HCLTECH	1649.50	16.50	1.01%	14.59	241.63	2012.20	18.03%	1235.00	33.56%	10.35%	21.59%
HDFCBANK	1933.50	13.60	0.71%	47.83	923.10	1978.90	2.29%	1448.15	33.52%	-2.13%	31.57%
HDFCLIFE	780.65	24.80	3.28%	45.12	349.37	781.35	0.09%	511.40	52.65%	6.08%	34.88%
HEROMOTOCO	4307.50	31.20	0.73%	4.61	198.78	6246.25	31.04%	3344.00	28.81%	11.55%	-14.40%
HINDALCO	650.05	0.50	0.08%	34.49	224.29	772.65	15.87%	546.45	18.96%	4.75%	-5.11%
HINDUNILVR	2355.00	24.30	1.04%	8.44	198.67	3035.00	22.41%	2136.00	10.25%	-2.83%	-1.53%
ICICIBANK	1450.50	8.40	0.58%	52.04	752.88	1459.70	0.63%	1051.05	38.00%	1.81%	29.79%
INDUSINDBK	792.60	7.60	0.97%	92.60	730.63	1550.00	48.86%	606.00	30.79%	-0.32%	-44.13%
INFY	1566.10	18.60	1.20%	50.38	792.95	2006.45	21.95%	1307.00	19.82%	8.76%	6.37%
ITC	436.00	9.90	2.32%	185.37	806.93	528.50	17.50%	390.15	11.75%	-1.73%	-3.14%
JIOFIN	281.40	6.85	2.49%	135.48	379.61	376.00	25.16%	198.65	41.66%	9.57%	-23.24%
JSWSTEEL	1009.20	3.60	0.36%	15.68	158.96	1074.90	6.11%	823.80	22.51%	-3.70%	9.81%
KOTAKBANK	2101.00	35.20	1.70%	16.51	345.52	2301.90	8.73%	1602.45	31.11%	-8.95%	21.55%
LT	3600.00	48.60	1.37%	11.19	402.93	3963.50	9.17%	2965.30	21.40%	9.01%	2.62%
M&M	3014.80	8.50	0.28%	18.28	550.45	3270.95	7.83%	2425.00	24.32%	6.72%	19.25%
MARUTI	12460.00	15.00	0.12%	1.69	211.15	13680.00	8.92%	10725.00	16.18%	6.06%	-0.69%
NESTLEIND	2409.90	48.20	2.04%	5.77	138.65	2778.00	13.25%	2110.00	14.21%	-1.89%	-4.35%
NTPC	344.60	3.20	0.94%	40.46	139.03	448.45	23.16%	292.80	17.69%	-5.23%	-8.68%
ONGC	244.22	2.55	1.06%	87.25	212.24	345.00	29.21%	205.00	19.13%	-2.47%	-13.07%
POWERGRID	298.05	7.15	2.46%	98.72	293.06	366.25	18.62%	247.30	20.52%	-6.93%	-10.70%
RELIANCE	1426.00	16.60	1.18%	64.75	922.42	1608.80	11.36%	1114.85	27.91%	9.15%	-51.75%
SBILIFE	1796.90	37.60	2.14%	10.68	191.74	1936.00	7.18%	1307.70	37.41%	8.67%	23.25%
SBIN	790.25	5.00	0.64%	55.34	437.61	912.00	13.35%	680.00	16.21%	-4.52%	-4.09%
SHRIRAMFIN	658.95	9.20	1.42%	31.29	205.94	730.45	9.79%	438.60	50.24%	-7.64%	-72.19%
SUNPHARMA	1689.10	-29.60	-1.72%	83.40	1391.59	1960.35	13.84%	1377.20	22.65%	-1.64%	11.65%
TATACONSUM	1138.70	12.00	1.07%	8.97	102.60	1250.10	8.91%	882.90	28.97%	-0.88%	0.57%
TATAMOTORS	718.00	0.55	0.08%	79.15	569.10	1179.00	39.10%	535.75	34.02%	13.73%	-24.28%
TATASTEEL	163.10	1.81	1.12%	294.82	479.41	184.60	11.65%	122.62	33.01%	16.74%	-6.93%
TCS	3508.00	31.00	0.89%	12.74	447.54	4592.25	23.61%	3056.05	14.79%	4.91%	-9.26%
TECHM	1581.20	15.60	1.00%	11.59	184.36	1807.70	12.53%	1193.65	32.47%	13.74%	17.68%
TITAN	3579.00	38.00	1.07%	4.17	149.04	3867.00	7.45%	2925.00	22.36%	6.10%	4.64%
TRENT	5428.00	86.00	1.61%	11.27	613.61	8345.00	34.96%	4196.00	29.36%	0.36%	14.96%
ULTRACEMCO	11738.00	58.00	0.50%	1.81	213.83	12339.00	4.87%	9534.95	23.10%	-2.33%	18.04%
WIPRO	247.80	1.86	0.76%	74.38	184.80	324.60	23.66%	208.50	18.85%	5.04%	-46.69%
ETERNAL	237.34	8.32	3.63%	421.80	1000.08	304.70	22.11%	146.30	62.23%	#VALUE!	#VALUE!

Disclaimer / Disclosures

ANALYST CERTIFICATION

I, Mrs. Vaishali Parekh B.com, Research Analyst, author and the name subscribed to this report, hereby certify that all of the views expressed in this research report accurately reflect our views about the subject issuer(s) or securities. We also certify that no part of our compensation was, is, or will be directly or indirectly related to the specific recommendation(s) or view(s) in this report.

Terms & conditions and other disclosures:

Prabhudas Lilladher Pvt. Ltd, Mumbai, India (hereinafter referred to as "PL") is engaged in the business of Stock Broking, Portfolio Manager, Depository Participant and distribution for third party financial products. PL is a subsidiary of Prabhudas Lilladher Advisory Services Pvt Ltd. which has its various subsidiaries engaged in business of commodity broking, investment banking, financial services (margin funding) and distribution of third party financial/other products, details in respect of which are available at www.plindia.com

This document has been prepared by the Research Division of PL and is meant for use by the recipient only as information and is not for circulation. This document is not to be reported or copied or made available to others without prior permission of PL. It should not be considered or taken as an offer to sell or a solicitation to buy or sell any security.

The information contained in this report has been obtained from sources that are considered to be reliable. However, PL has not independently verified the accuracy or completeness of the same. Neither PL nor any of its affiliates, its directors or its employees accepts any responsibility of whatsoever nature for the information, statements and opinion given, made available or expressed herein or for any omission therein.

Recipients of this report should be aware that past performance is not necessarily a guide to future performance and value of investments can go down as well. The suitability or otherwise of any investments will depend upon the recipient's particular circumstances and, in case of doubt, advice should be sought from an independent expert/advisor.

Either PL or its affiliates or its directors or its employees or its representatives or its clients or their relatives may have position(s), make market, act as principal or engage in transactions of securities of companies referred to in this report and they may have used the research material prior to publication.

PL may from time to time solicit or perform investment banking or other services for any company mentioned in this document.

PL is registered as Research Analyst under Securities and Exchange Board of India (Research Analysts) Regulations, 2014 PL submits that no material disciplinary action has been taken on us by any Regulatory Authority impacting Equity Research Analysis activities.

PL or its research analysts or its associates or his relatives do not have any financial interest in the subject company.

PL or its research analysts or its associates or his relatives do not have actual/beneficial ownership of one per cent or more securities of the subject company at the end of the month immediately preceding the date of publication of the research report.

PL or its research analysts or its associates or his relatives do not have any material conflict of interest at the time of publication of the research report.

PL or its associates might have received compensation from the subject company in the past twelve months.

PL or its associates might have managed or co-managed public offering of securities for the subject company in the past twelve months or mandated by the subject company for any other assignment in the past twelve months.

PL or its associates might have received any compensation for investment banking or merchant banking or brokerage services from the subject company in the past twelve months.

PL or its associates might have received any compensation for products or services other than investment banking or merchant banking or brokerage services from the subject company in the past twelve months PL or its associates might have received any compensation or other benefits from the subject company or third party in connection with the research report.

PL encourages independence in research report preparation and strives to minimize conflict in preparation of research report. PL or its analysts did not receive any compensation or other benefits from the subject Company or third party in connection with the preparation of the research report. PL or its Research Analysts do not have any material conflict of interest at the time of publication of this report.

It is confirmed that Mrs.Vaishali Parekh B.com, Research Analyst of this report has not received any compensation from the companies mentioned in the report in the preceding twelve months compensation of our Research Analysts is not based on any specific merchant banking, investment banking or brokerage service transactions.

The Research analysts for this report certifies that all of the views expressed in this report accurately reflect his or her personal views about the subject company or companies and its or their securities, and no part of his or her compensation was, is or will be, directly or indirectly related to specific recommendations or views expressed in this report.

The research analysts for this report has not served as an officer, director or employee of the subject company PL or its research analysts have not engaged in market making activity for the subject company

Our sales people, traders, and other professionals or affiliates may provide oral or written market commentary or trading strategies to our clients that reflect opinions that are contrary to the opinions expressed herein, and our proprietary trading and investing businesses may make investment decisions that are inconsistent with the recommendations expressed herein. In reviewing these materials, you should be aware that any or all of the foregoing, among other things, may give rise to real or potential conflicts of interest.

PL and its associates, their directors and employees may (a) from time to time, have a long or short position in, and buy or sell the securities of the subject company or (b) be engaged in any other transaction involving such securities and earn brokerage or other compensation or act as a market maker in the financial instruments of the subject company or act as an advisor or lender/borrower to the subject company or may have any other potential conflict of interests with respect to any recommendation and other related information and opinions.