

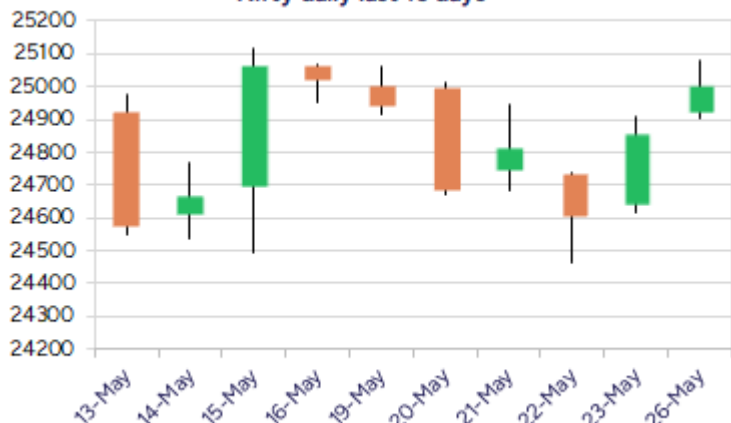
Date: 27<sup>th</sup> May 2025

\* Sensex 82176.45 + 455.37

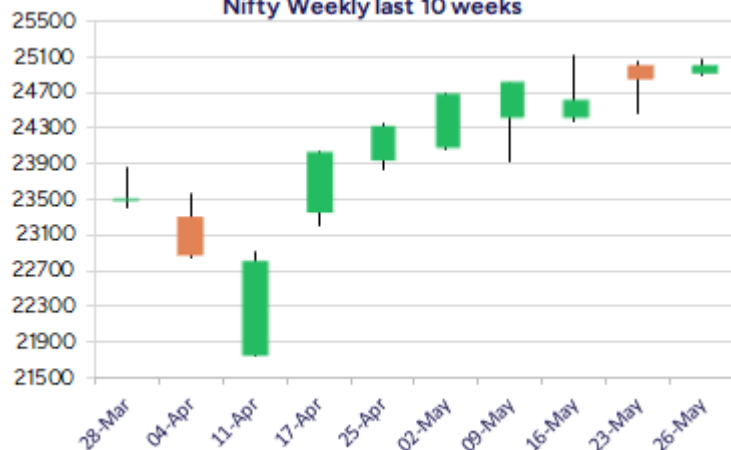
\* Nifty 25001.15 + 148.00

\* Bank Nifty 55572.00 + 173.75

Nifty daily last 10 days



Nifty Weekly last 10 weeks



\*Blue candle → Close rate > Open rate \* Red candle → Close rate < Open rate

## Market Preview

### Nifty witnesses strong pullback; ends at 25000 zone

Nifty has witnessed a decent pullback in the last two sessions to once again regain strength and can expect for further rise in the coming days. BankNifty has once again witnessed resistance near the 55800 zone and slipped to some extent to be gripped inside the narrow range band. The market breadth was strong once again with the advance decline indicating a ratio of 2:1 at close.

## Market Forecast

### Nifty daily range 24850-25200

Nifty, has regained strength after witnessing two sessions of winning streak from the low made near 24460 zone and has retested the 25000 level once again expecting for further rise in the coming sessions. With the undertone maintained positive along with the broader markets indicating active participation, the index is maintained positive and can anticipate for higher targets of 25400 and 25600 levels in the coming days. The important and crucial support zone would be positioned near 24500 level as mentioned earlier which needs to be sustained.

BankNifty, once again touched the 55800 zone which it found resistance and slipped with profit booking seen to witness consolidation overall with the bias maintained cautiously positive anticipating for upward movement in the coming days. As mentioned earlier, the index needs to breach above the 55800 zone decisively and thereafter, trigger for fresh upward move having targets of 57200 and 58500 levels possible in the coming days.

The support for the day is seen at 24850 levels while the resistance is seen at 25200 levels. BankNifty would have the daily range of 55200-56000 levels.

Indices	Period	Closing	% Chng	Trend	Reversal	2 Sup	1 Sup	Pivot	1 Res	2 Res
Nifty	Daily	25001.15	0.60%	1	24957.55	24815	24908	24994	25087	25172
	Weekly	24853.15	-0.67%	10	24391.15	24196	24524	24794	25122	25392
	Monthly	24334.20	3.46%	-7	24274.15	20798	22566	23512	25279	26225
Bank Nifty	Daily	55572.00	0.31%	2	55403.80	55017	55294	55585	55863	56153
	Weekly	55398.25	0.08%	2	55057.50	54109	54754	55223	55868	56337
	Monthly	55087.15	6.83%	1	53311.35	46522	50805	53451	57733	60379
Sensex	Daily	82176.45	0.56%	1	82026.50	81554	81865	82179	82490	82804
	Weekly	81721.08	-0.74%	10	80361.90	79616	80669	81546	82598	83475
	Monthly	80242.24	3.65%	-7	80009.00	68245	74243	77449	83447	86653

Daily Trend turned Up			
Scrip Name	LCP	Curr Trnd	Reversal
ADANIPOWER	558.6	-3	556.15
AMARAJABAT	1049.85	-4	1024.2
BALRAMCHIN	566.3	-4	555.5
BRITANNIA	5525	-4	5499.9
CANFINHOME	755.65	-2	752.1
COFORGE	8455.5	-5	8361.75
CONCOR	742.4	-1	736.75
DIVISLAB	6737	-1	6538.3
HCLTECH	1673.6	-5	1661.25
HINDUNILVR	2394.1	-4	2363.6
HUDCO	238.26	-2	230
INFY	1580.5	-5	1574.6

\* Trends turned Up after a significant period

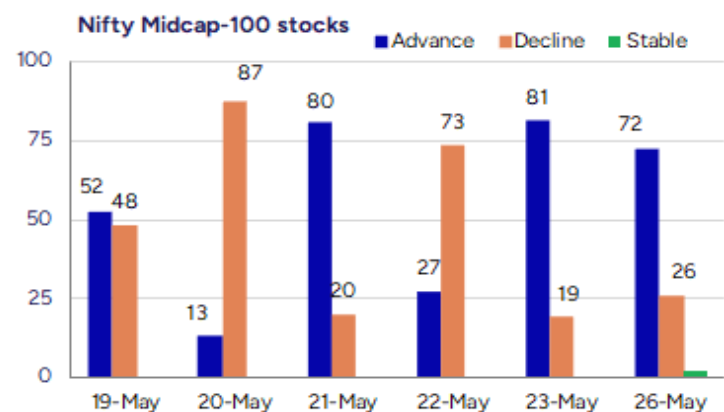
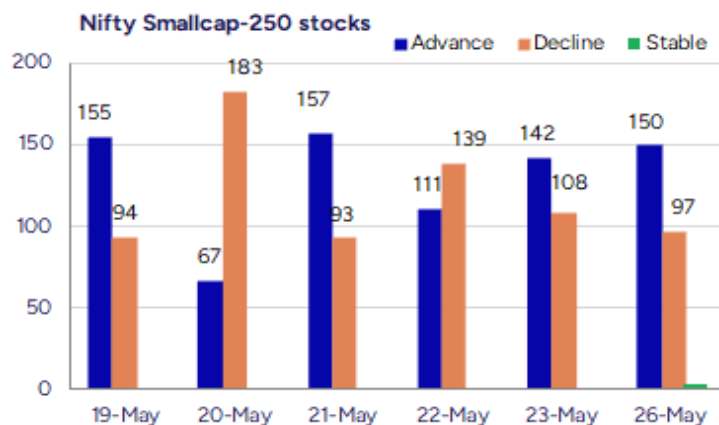
Daily Trend turned Up			
Scrip Name	LCP	Curr Trnd	Reversal
JSWSTEELLTD	1032.3	-3	1014.5
LARSENTOUBRO	3648.7	-4	3627.55
LTI	5111.6	-3	5048.65
METROPOLIS	1658.4	-2	1636.95
MUTHOOTFIN	2095	-7	2071.9
PVR	988.95	-4	980.45
SBIN	794.4	-6	791.55
TCS	3537.3	-5	3529.85
TORNTPOWER	1426.1	-4	1404.45
TRENT	5526	-4	5497.5
UBL	2046.3	-10	2020.95
VEDL	445.55	-4	440.7

\* Trends turned Up after a significant period

### Gainers - Losers ( Nifty 500 Stocks )

Gainers			
Company Name	Last Price	% Gain	Volume
Delta	80.52	20	30898
Godavari Bio	228.79	20	362014
Shreyans Ind	229.28	20	107680
Kundan Edifice	129.75	19.97	30000
Oriental Carbon	225.42	19.7	181591
Ester Ind	143.59	18.96	3308653
Fidel Softech	191.55	16.51	62000

Losers			
Company Name	Last Price	% Loss	Volume
Megatherm	291.6	-12.73	119200
Salzer Electro	960.75	-11.37	527747
Commercial Syn	102.36	-10.76	232393
Pix Transmis	1557.3	-10.12	212688
Homesfy Realty	352.35	-10	1200
Emmbi Ind	111.89	-9	160995
Agarwal Ind	985.05	-8.25	79544



## Nifty Daily chart with RSI indicator



## BankNifty Daily chart with RSI indicator



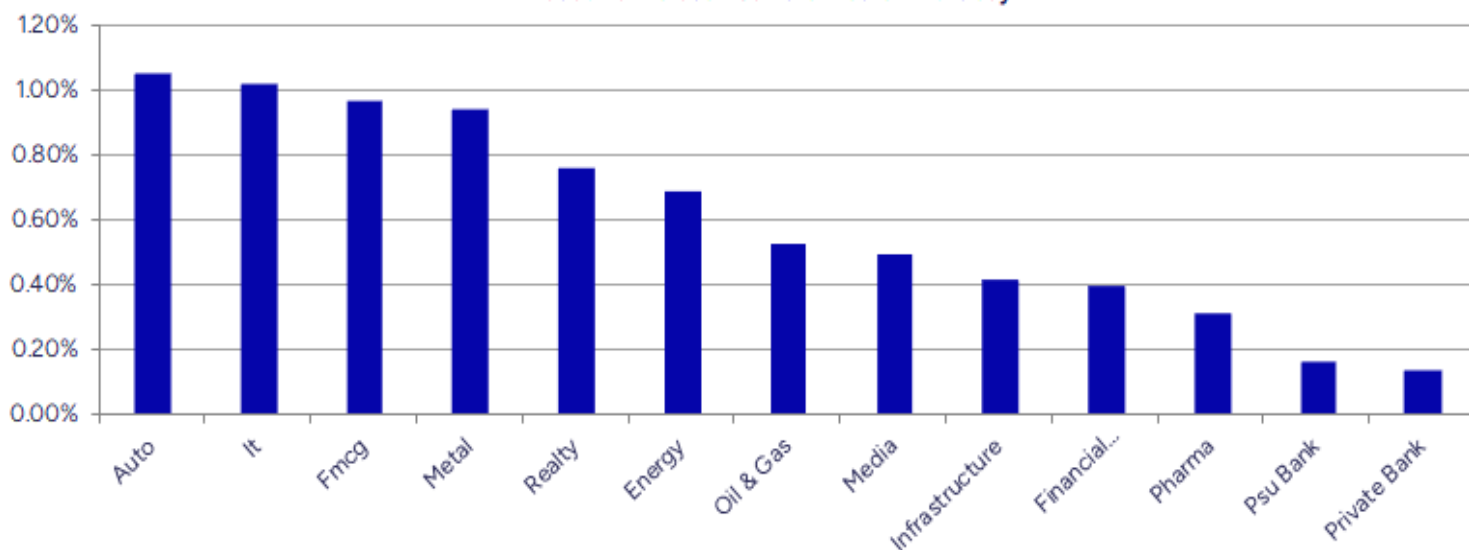
Breakouts - Cross above 200 DMA			
Company Name	LCP	Change %	200 DMA
Gillette India	9389	7.07	8769.42
IFB Agro	578.35	6.78	541.64
Beta Drugs	1849.05	5.22	1757.24
Control Print	742.85	4.17	713.1
Krishival Foods	264.05	3.84	254.28
Maithan Alloys	1063.95	3.59	1027.12
JagsonpalPharma	220.96	3.46	213.58
IFCI	58.45	2.89	56.81
EPack Durables	404.95	2.88	393.6
Shreyans Ind	229.28	2.86	222.9
Indraprastha	436.45	2.83	424.44
Mazda	276.72	2.82	269.12
Sandhar Technol	503.3	2.79	489.66
BLS Internation	412.45	2.57	402.13
Shakti Pumps	888.65	2.39	867.93
Weizmann	126.51	2.35	123.6
Jet Freight Log	15.45	2.18	15.12
Greenlam Ind	269.21	2.17	263.5

\* Stocks crossing above its Simple Moving Average (200DMA)

Breakdown - Cross below 200 DMA			
Company Name	LCP	Change %	200 DMA
Megatherm Induc	291.60	-10.69	326.51
Effwa Infra & R	228.70	-4.60	239.72
Avadh Sugar	538.25	-4.33	562.64
HYBRIDFIN	12.52	-3.77	13.01
Lords Chloro	144.34	-3.52	149.60
Akzo Nobel	3,467.90	-3.29	3,585.75
Panama Petro	367.45	-2.65	377.47
20 Microns	236.76	-2.57	243.01
Maral Overseas	73.25	-2.22	74.91
Viviana Power	848.50	-1.95	865.41
India Cements	327.05	-1.52	332.09
HBL Eng	555.25	-1.50	563.71
TIPSFILMS	22-Jun	-1.22	546.26
Mason Infratech	124.00	-1.21	125.52
SKF India	4,545.00	-0.72	4,578.13
Steel City Secu	100.66	-0.62	101.29
GMRP&UI	117.31	-0.54	117.95
Sarda Energy	444.35	-0.44	446.31

\* Stocks crossing below its Simple Moving Average (200DMA)

Sectoral Indices - Gainers Losers for the day



Stocks witnessing a volume surge as compared to their 5 day average volume

Watch out for the stocks that have seen a huge spurt in its share price over the last three days

Volume Shockers - NSE					
Company name	LCP	% Chg	Volume	Avg Vol *	% Chg
Diamond Power	100.3	5.97	2289838	6800	33572
Premier Explo	524	-4.06	3393598	77069	4303
BEML	4279.7	15.11	8489083	197462	4199
Sky Gold	370.05	4.11	1116374	25989	4196
Hind Motors	29.48	11.2	17573713	416435	4120
Shakti Pumps	888.65	3.94	1250606	38631	3137
Laxmi Goldorna	559.2	0.81	34754	1094	3077
Shanti Overseas	18.72	1.35	1696815	58214	2815
Sandhar Technol	503.3	9.47	1482832	54249	2633
HEC Infra Proje	132.31	5	307704	13501	2179
Inspire Films	19.05	-7.07	190000	8400	2162
Data Patterns	2824.8	3.91	2390879	106334	2148
KCK Industries	38.05	-3.67	292500	13600	2051
Camlin Fine	217.5	15.74	15873073	742164	2039
Balkrishna Ind	2492	-6.32	5053005	241796	1990
Share India	185.85	6.44	4668201	238399	1858
Share India	185.85	6.44	4668201	238399	1858
Tarsons Product	442.55	8.55	720870	37422	1826
Sigma Solve	389.4	2.45	172965	9030	1816
Ausom Enterp	115.06	6.45	46692	2554	1728

\* the Average Volume of last 5 days

Price Shockers - NSE				
Company name	LCP	Prv Close	% Chg	Volume
Cosmo First	1034.75	662.25	56.25	865821
Nahar Poly Film	333.93	221.38	50.84	508920
Shilpa	890.25	702.45	26.73	4781444
Delta	80.52	65.09	23.71	30898
Dishman Carbogee	271.88	220.04	23.56	1843996
Shreyans Ind	229.28	187.44	22.32	107680
Kernex Micro	1093.1	905.05	20.78	37199
Apollo Pipes	479.35	399.35	20.03	1284810
Nelcast	140.78	118.56	18.74	266247
Oriental Carbon	225.42	190.25	18.49	181591
Finolex Ind	223.51	189.98	17.65	19626693
BEML	4279.7	3640.2	17.57	8488980
Tarmat	57.74	49.37	16.95	54084
Alicon Castallo	907.2	776.2	16.88	20732
Interarch Build	2098.5	1807.3	16.11	105235
Sandhar Technol	503.3	433.6	16.07	1482832
Ramco System	425.5	366.9	15.97	187938
Total Transport	86.67	74.76	15.93	216708
IFCI	58.45	50.42	15.93	108373819
Atlas Cycles	135.24	116.85	15.74	38781

\* the % price rise of the last 3 days



Symbol	LTP	Chng	% Chng	Volume (lacs)	Turnover (crs.)	52w High	Diff with 52w H	52w Low	Diff with 52w L	365 days % chng	30 days % chng
NIFTY 50	25001.15	148.00	0.60%	3027.99	20060.53	26277.35	4.86%	21281.45	17.48%	3.39%	8.26%
ADANIENT	2543.60	3.60	0.14%	5.53	141.22	3743.90	32.06%	2025.00	25.61%	7.89%	-24.96%
ADANIPTS	1396.70	1.30	0.09%	10.25	143.82	1621.40	13.86%	995.65	40.28%	16.97%	-1.46%
APOLLOHOSP	7099.50	35.00	0.50%	2.28	161.86	7545.35	5.91%	5693.20	24.70%	1.60%	19.45%
ASIANPAINT	2325.60	10.10	0.44%	12.58	291.71	3394.90	31.50%	2124.75	9.45%	-4.77%	-19.45%
AXISBANK	1213.00	2.90	0.24%	36.08	439.09	1339.65	9.45%	933.50	29.94%	3.76%	3.07%
BAJAJ-AUTO	8950.00	209.00	2.39%	4.41	392.93	12774.00	29.94%	7089.35	26.25%	8.80%	-2.32%
BAJAJFINSV	2050.90	14.40	0.71%	7.14	147.04	2135.00	3.94%	1419.05	44.53%	-0.44%	27.15%
BAJFINANCE	9262.00	18.50	0.20%	5.48	508.79	9660.00	4.12%	6375.70	45.27%	1.44%	35.20%
BEL	384.70	0.90	0.23%	267.23	1024.10	389.90	1.33%	230.00	67.26%	28.97%	29.14%
BHARTIARTL	1846.50	14.80	0.81%	32.55	600.71	1917.00	3.68%	1219.05	51.47%	0.80%	31.92%
CIPLA	1482.60	-1.60	-0.11%	8.85	131.41	1702.05	12.89%	1335.00	11.06%	-2.73%	-0.15%
COALINDIA	402.40	0.90	0.22%	60.68	244.86	543.55	25.97%	349.25	15.22%	2.12%	-19.86%
DRREDDY	1242.00	11.90	0.97%	9.85	122.27	1421.49	12.63%	1020.00	21.76%	4.71%	-79.03%
EICHERMOT	5430.00	30.00	0.56%	3.37	183.39	5906.50	8.07%	4253.85	27.65%	-3.15%	10.63%
GRASIM	2652.00	-7.40	-0.28%	4.36	116.14	2877.75	7.84%	2171.60	22.12%	-2.76%	8.95%
HCLTECH	1673.80	25.60	1.55%	10.79	180.11	2012.20	16.82%	1235.00	35.53%	4.44%	22.52%
HDFCBANK	1940.30	6.70	0.35%	54.01	1047.59	1978.90	1.95%	1454.00	33.45%	1.17%	27.45%
HDFCLIFE	780.00	-0.40	-0.05%	23.43	183.32	786.15	0.78%	511.40	52.52%	10.77%	38.10%
HEROMOTOCO	4358.00	49.20	1.14%	7.65	334.94	6246.25	30.23%	3344.00	30.32%	10.61%	-15.82%
HINDALCO	661.00	10.90	1.68%	68.26	452.05	772.65	14.45%	546.45	20.96%	4.50%	-3.44%
HINDUNILVR	2391.20	32.00	1.36%	8.93	212.92	3035.00	21.21%	2136.00	11.95%	1.16%	-0.42%
ICICIBANK	1460.50	10.70	0.74%	56.09	819.40	1471.60	0.75%	1051.05	38.96%	3.20%	28.08%
INDUSINDBK	800.75	7.35	0.93%	53.82	429.21	1550.00	48.34%	606.00	32.14%	-3.52%	-44.97%
INFY	1582.00	17.20	1.10%	31.70	500.10	2006.45	21.15%	1307.00	21.04%	5.72%	6.80%
ITC	442.90	6.60	1.51%	131.08	576.97	528.50	16.20%	390.15	13.52%	1.99%	0.02%
JIOFIN	281.50	-0.25	-0.09%	86.54	244.63	376.00	25.13%	198.65	41.71%	11.34%	-22.89%
JSWSTEEL	1030.00	21.50	2.13%	47.17	479.48	1074.90	4.18%	823.80	25.03%	-1.94%	10.99%
KOTAKBANK	2090.00	-10.80	-0.51%	20.40	427.24	2301.90	9.21%	1602.45	30.43%	-4.70%	23.33%
LT	3646.00	46.10	1.28%	16.79	612.39	3963.50	8.01%	2965.30	22.96%	10.02%	-0.72%
M&M	3075.00	62.30	2.07%	21.64	666.35	3270.95	5.99%	2425.00	26.80%	5.18%	16.78%
MARUTI	12427.00	-26.00	-0.21%	2.15	267.45	13680.00	9.16%	10725.00	15.87%	6.45%	-4.21%
NESTLEIND	2451.00	36.60	1.52%	6.24	153.02	2778.00	11.77%	2110.00	16.16%	0.04%	-2.16%
NTPC	343.30	-1.30	-0.38%	166.55	576.47	448.45	23.45%	292.80	17.25%	-3.32%	-8.09%
ONGC	245.85	1.61	0.66%	71.60	176.20	345.00	28.74%	205.00	19.93%	-0.85%	-13.77%
POWERGRID	296.70	-1.40	-0.47%	164.69	492.59	366.25	18.99%	247.30	19.98%	-2.74%	-6.49%
RELIANCE	1435.90	9.10	0.64%	48.43	696.01	1608.80	10.75%	1114.85	28.80%	9.72%	-51.81%
SBILIFE	1800.30	1.60	0.09%	6.34	114.05	1936.00	7.01%	1307.70	37.67%	6.11%	25.24%
SBIN	794.15	3.65	0.46%	49.65	394.30	912.00	12.92%	680.00	16.79%	-1.02%	-4.60%
SHRIRAMFIN	663.10	3.25	0.49%	29.63	195.59	730.45	9.22%	438.60	51.19%	0.71%	-72.48%
SUNPHARMA	1679.10	-4.50	-0.27%	22.82	382.60	1960.35	14.35%	1377.20	21.92%	-5.81%	13.24%
TATACONSUM	1147.00	6.20	0.54%	6.16	70.65	1250.10	8.25%	882.90	29.91%	-1.29%	3.87%
TATAMOTORS	729.20	10.95	1.52%	130.17	952.64	1179.00	38.15%	535.75	36.11%	9.61%	-25.23%
TATASTEEL	162.37	-0.60	-0.37%	255.82	417.85	184.60	12.04%	122.62	32.42%	17.37%	-6.79%
TCS	3538.00	23.40	0.67%	9.67	342.13	4592.25	22.96%	3056.05	15.77%	1.93%	-8.70%
TECHM	1602.00	21.70	1.37%	7.11	113.59	1807.70	11.38%	1193.65	34.21%	8.09%	19.56%
TITAN	3614.40	34.70	0.97%	5.26	189.76	3867.00	6.53%	2925.00	23.57%	6.37%	4.90%
TRENT	5529.00	93.50	1.72%	6.40	351.75	8345.00	33.74%	4196.00	31.77%	5.65%	15.27%
ULTRACEMCO	11676.00	-70.00	-0.60%	1.98	231.60	12339.00	5.37%	9534.95	22.45%	-4.01%	14.81%
WIPRO	250.25	2.89	1.17%	36.91	92.16	324.60	22.91%	208.50	20.02%	2.68%	-46.65%
ETERNAL	226.65	-10.90	-4.59%	891.47	2034.07	304.70	25.62%	146.30	54.92%	#VALUE!	#VALUE!

## Disclaimer / Disclosures

### ANALYST CERTIFICATION

I, Mrs. Vaishali Parekh B.com, Research Analyst, author and the name subscribed to this report, hereby certify that all of the views expressed in this research report accurately reflect our views about the subject issuer(s) or securities. We also certify that no part of our compensation was, is, or will be directly or indirectly related to the specific recommendation(s) or view(s) in this report.

Terms & conditions and other disclosures:

Prabhudas Lilladher Pvt. Ltd, Mumbai, India (hereinafter referred to as "PL") is engaged in the business of Stock Broking, Portfolio Manager, Depository Participant and distribution for third party financial products. PL is a subsidiary of Prabhudas Lilladher Advisory Services Pvt Ltd. which has its various subsidiaries engaged in business of commodity broking, investment banking, financial services (margin funding) and distribution of third party financial/other products, details in respect of which are available at [www.plindia.com](http://www.plindia.com)

This document has been prepared by the Research Division of PL and is meant for use by the recipient only as information and is not for circulation. This document is not to be reported or copied or made available to others without prior permission of PL. It should not be considered or taken as an offer to sell or a solicitation to buy or sell any security.

The information contained in this report has been obtained from sources that are considered to be reliable. However, PL has not independently verified the accuracy or completeness of the same. Neither PL nor any of its affiliates, its directors or its employees accepts any responsibility of whatsoever nature for the information, statements and opinion given, made available or expressed herein or for any omission therein.

Recipients of this report should be aware that past performance is not necessarily a guide to future performance and value of investments can go down as well. The suitability or otherwise of any investments will depend upon the recipient's particular circumstances and, in case of doubt, advice should be sought from an independent expert/advisor.

Either PL or its affiliates or its directors or its employees or its representatives or its clients or their relatives may have position(s), make market, act as principal or engage in transactions of securities of companies referred to in this report and they may have used the research material prior to publication.

PL may from time to time solicit or perform investment banking or other services for any company mentioned in this document.

PL is registered as Research Analyst under Securities and Exchange Board of India (Research Analysts) Regulations, 2014 PL submits that no material disciplinary action has been taken on us by any Regulatory Authority impacting Equity Research Analysis activities.

PL or its research analysts or its associates or his relatives do not have any financial interest in the subject company.

PL or its research analysts or its associates or his relatives do not have actual/beneficial ownership of one per cent or more securities of the subject company at the end of the month immediately preceding the date of publication of the research report.

PL or its research analysts or its associates or his relatives do not have any material conflict of interest at the time of publication of the research report.

PL or its associates might have received compensation from the subject company in the past twelve months.

PL or its associates might have managed or co-managed public offering of securities for the subject company in the past twelve months or mandated by the subject company for any other assignment in the past twelve months.

PL or its associates might have received any compensation for investment banking or merchant banking or brokerage services from the subject company in the past twelve months.

PL or its associates might have received any compensation for products or services other than investment banking or merchant banking or brokerage services from the subject company in the past twelve months PL or its associates might have received any compensation or other benefits from the subject company or third party in connection with the research report.

PL encourages independence in research report preparation and strives to minimize conflict in preparation of research report. PL or its analysts did not receive any compensation or other benefits from the subject Company or third party in connection with the preparation of the research report. PL or its Research Analysts do not have any material conflict of interest at the time of publication of this report.

It is confirmed that Mrs.Vaishali Parekh B.com, Research Analyst of this report has not received any compensation from the companies mentioned in the report in the preceding twelve months compensation of our Research Analysts is not based on any specific merchant banking, investment banking or brokerage service transactions.

The Research analysts for this report certifies that all of the views expressed in this report accurately reflect his or her personal views about the subject company or companies and its or their securities, and no part of his or her compensation was, is or will be, directly or indirectly related to specific recommendations or views expressed in this report.

The research analysts for this report has not served as an officer, director or employee of the subject company PL or its research analysts have not engaged in market making activity for the subject company

Our sales people, traders, and other professionals or affiliates may provide oral or written market commentary or trading strategies to our clients that reflect opinions that are contrary to the opinions expressed herein, and our proprietary trading and investing businesses may make investment decisions that are inconsistent with the recommendations expressed herein. In reviewing these materials, you should be aware that any or all of the foregoing, among other things, may give rise to real or potential conflicts of interest.

PL and its associates, their directors and employees may (a) from time to time, have a long or short position in, and buy or sell the securities of the subject company or (b) be engaged in any other transaction involving such securities and earn brokerage or other compensation or act as a market maker in the financial instruments of the subject company or act as an advisor or lender/borrower to the subject company or may have any other potential conflict of interests with respect to any recommendation and other related information and opinions.