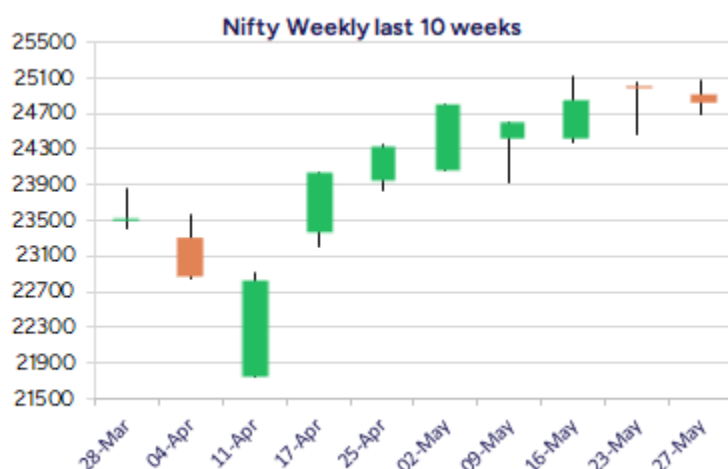
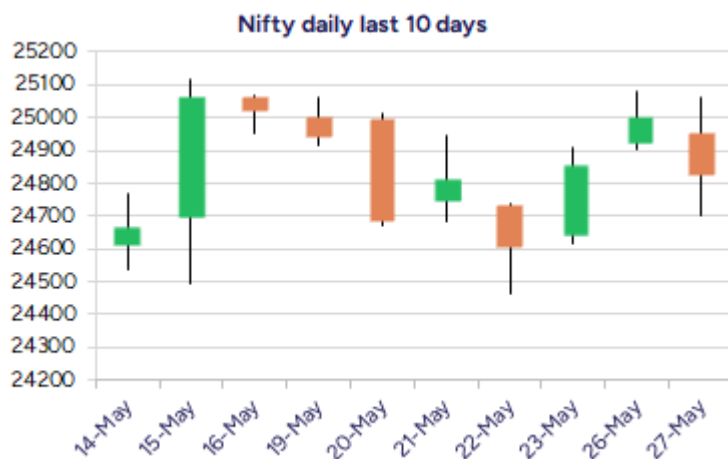


Date: 28th May 2025

* Sensex 81551.63 - 624.82

* Nifty 24826.20 - 174.95

* Bank Nifty 55352.80 - 219.20



*Blue candle → Close rate > Open rate * Red candle → Close rate < Open rate

Market Preview

Nifty amid volatility ends near 24800 zone

Nifty once again failed to breach above the 25000 zone and with profit booking witnessed closed the session near 24800 level with bias maintained intact. BankNifty has been oscillating between the narrow range of 55800 and 54400 zone for quite some time and would need a clear breakout to expect for fresh upward move. The market breadth was overall flat with the advance decline indicating a neutral ratio at close.

Market Forecast

Nifty daily range 24700-25000

Nifty, amid high volatility witnessed a steep fall in the morning session to hit the low near the 24750 zone thereafter to regain strongly but once again found resistance near the 25000 level to slip down to end the session near 24800 level with overall bias maintained positive. The index needs to breach above the 25000-level barrier to continue with the upward journey while on the downside 24500 zone is positioned as the important support level which needs to be sustained to maintain the overall bias intact.

BankNifty, repeatedly has been failing to conquer above the tough hurdle of 55800 zone with profit booking dragging the index to end inside the narrow band of 55800 and 54400 levels with bias maintained positive and as mentioned earlier, a decisive breach above the 55800 zone is much needed to trigger for fresh upward move having targets of 57200 and 58500 levels possible in the coming days.

The support for the day is seen at 24700 levels while the resistance is seen at 25000 levels. BankNifty would have the daily range of 55000-56000 levels.

Indices	Period	Closing	% Chng	Trend	Reversal	2 Sup	1 Sup	Pivot	1 Res	2 Res
Nifty	Daily	24826.20	-0.70%	-1	24937.20	24506	24666	24864	25025	25223
	Weekly	24853.15	-0.67%	10	24391.15	24196	24524	24794	25122	25392
	Monthly	24334.20	3.46%	-7	24274.15	20798	22566	23512	25279	26225
Bank Nifty	Daily	55352.80	-0.39%	-1	55376.15	54614	54983	55407	55777	56201
	Weekly	55398.25	0.08%	2	55057.50	54109	54754	55223	55868	56337
	Monthly	55087.15	6.83%	1	53311.35	46522	50805	53451	57733	60379
Sensex	Daily	81551.63	-0.76%	-1	81962.40	80406	80979	81695	82268	82983
	Weekly	81721.08	-0.74%	10	80361.90	79616	80669	81546	82598	83475
	Monthly	80242.24	3.65%	-7	80009.00	68245	74243	77449	83447	86653

Daily Trend turned Up			
Scrip Name	LCP	Curr Trnd	Reversal
AARTIIND	478.45	-5	475.55
BANDHANBNK	168.95	-5	167.85
CHAMBLFERT	594.1	-14	593.65
ESCORTS	3532.2	-4	3527.3
HAVELLS	1572.8	-5	1572.05
IEX	199.45	-3	198.05
INDIACEM	337.45	-1	330.2
MAHSEAMLES	705.15	-2	695.8
PIIND	3752	-4	3721
PRAJINDLTD	489.85	-2	489.7
UJJIVAN	45.09	-5	44.9
VOLTAS	1261.7	-1	1258.65

* Trends turned Up after a significant period

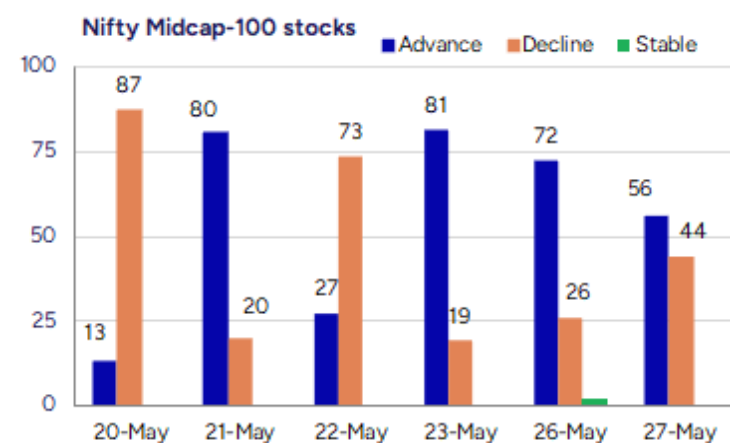
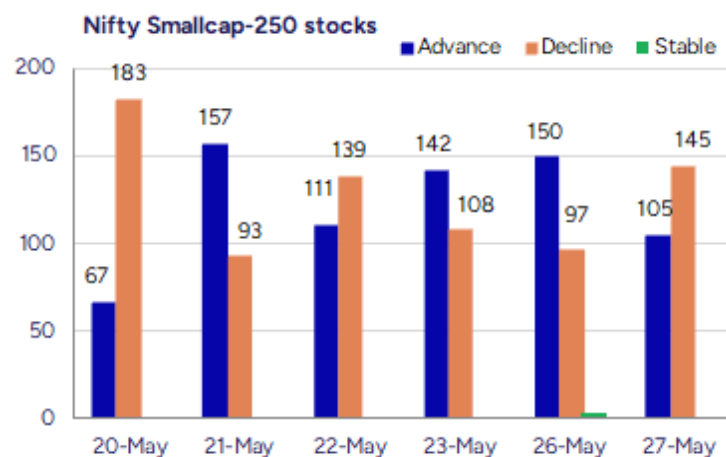
Daily Trend turned Down			
Scrip Name	LCP	Curr Trnd	Reversal
ACC	1936.8	11	1946.1
BAJFINANCE	9171	2	9228.75
BPCL	317	2	320.2
DMART	4094	2	4138.2
GMDC	358.65	2	360.5
HDFCAMC	4808.4	11	4828.7
ITC	433.9	2	437.9
KAJARIACER	1021.8	14	1036.95
LTTS	4446	2	4492.5
MCX	6423.5	9	6460.75
NATIONALUM	181.95	12	183.35
VRLOG	572.9	16	578.3

* Trends turned Down after a significant period

Gainers - Losers (Nifty 500 Stocks)

Gainers			
Company Name	Last Price	% Gain	Volume
Systango Tech	269.4	20	255200
Nupur Rec	84.46	19.99	2968714
Delta	96.52	19.87	653569
Rexpro Ent	92.6	16.26	148000
Shriram Prop	97.39	15.13	31411133
Godavari Bio	262.24	14.62	1281567
Nidan Lab	21.7	13.61	93000

Losers			
Company Name	Last Price	% Loss	Volume
Maxvolt Energy	225.4	-12.94	242400
Tunwal E-Motors	32.2	-10.31	394000
Rategain Travel	472.05	-10.15	2114375
Homesfy Realty	317.15	-9.99	22800
Tracxn Tech	56.95	-9.49	1279083
Cords Cable Ind	194.17	-9.14	370749
Fidel Softech	175.8	-8.22	84000



Nifty Daily chart with RSI indicator



BankNifty Daily chart with RSI indicator

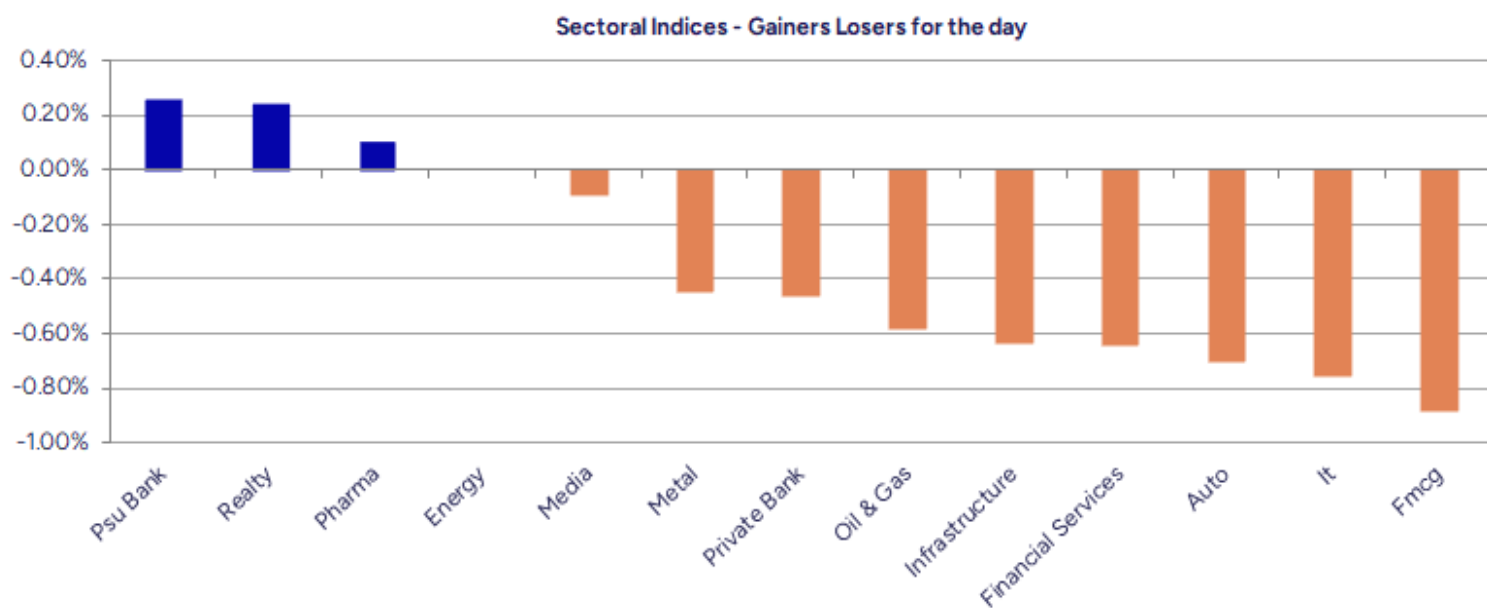


Breakouts - Cross above 200 DMA			
Company Name	LCP	Change %	200 DMA
Systango Tech	269.4	14.09	236.13
Delta	96.52	10.94	87
India Pesticide	189.38	8.09	175.21
ITI	309.25	6.29	290.96
Refex Ind	459.45	4.94	437.82
Rollatainers	2.14	4.39	2.05
Minda Corp	550.55	4.06	529.07
Kundan Edifice	142	3.21	137.58
Munjal Showa	146.15	2.82	142.14
Eimco Elecon	2265.6	2.54	2209.44
Can Fin Homes	775.05	2.20	758.35
India Cements	337.45	1.68	331.86
Zenithexpo	268.7	1.52	264.68
Steel City Secu	102.83	1.48	101.33
J G Chemicals	371	1.14	366.82
Pudumjee Ind	46.83	1.10	46.32
Maral Overseas	75.63	0.99	74.89
Ravindra Energy	119.2	0.94	118.09

* Stocks crossing above its Simple Moving Average (200DMA)

Breakdown - Cross below 200 DMA			
Company Name	LCP	Change %	200 DMA
Blue Dart	6,812.50	-5.03	7,173.29
Elin Electronic	178.48	-4.60	187.08
SUMITOMO	503.20	-4.52	527.02
Talbro's Auto	282.55	-4.15	294.77
Max Estates	505.45	-2.89	520.51
Parsvnath	19.96	-2.82	20.54
InfoBeans Tech	374.85	-2.64	385.00
Oriental Carbon	219.26	-2.48	224.84
Accent Micro	244.35	-2.35	250.22
EPack Durables	386.00	-2.12	394.35
Greaves Cotton	205.55	-1.85	209.42
Sapphire Foods	316.75	-1.77	322.45
Ambika Cotton	28-Feb	-1.73	1,546.70
Gulf Oil Lubric	1,179.80	-1.73	1,200.55
Giriraj Civil D	301.25	-1.40	305.53
PTL Enterprises	40.83	-1.33	41.38
Devyani	171.97	-1.14	173.95
Lakshmi Finance	218.37	-1.09	220.77

* Stocks crossing below its Simple Moving Average (200DMA)



Stocks witnessing a volume surge as compared to their 5 day average volume

Watch out for the stocks that have seen a huge spurt in its share price over the last three days

Volume Shockers - NSE					
Company name	LCP	% Chg	Volume	Avg Vol *	% Chg
Diamond Power	110.33	10	1499507	6800	21950
Delta	96.52	19.87	653569	8923	7224
Shanti Overseas	19.65	4.97	2894596	58214	4872
CCL Products	841.75	4.58	6080176	122716	4855
Jindal Drilling	681.85	-4.72	1422209	34855	3980
Sky Gold	365.15	-1.32	1011953	25989	3794
Atal	16.01	7.16	3913330	100889	3779
Bayer CropScien	5674	10.59	1587546	42340	3650
KCK Industries	38.5	1.18	415000	13600	2951
CreditAccess Gr	1173.8	2.63	5851730	198052	2855
Premier Explo	560.55	6.98	2170352	77069	2716
Camlin Fine	245.57	12.91	18830828	742164	2437
Schneider Infra	697.95	2.84	5369685	212328	2429
Kamdhenu	30.96	-0.13	17490868	717571	2338
Avantel	138.9	8.09	11556383	538541	2046
ITI	309.25	9.99	11599080	544991	2028
Prime Focus	109.69	4.25	2969597	152269	1850
Kilitch Drugs	487.85	4.35	239095	12389	1830
Centum Electron	2516.8	10.83	268527	14212	1789
Apollo Micro Sy	155.81	12.25	57640669	3149937	1730

* the Average Volume of last 5 days

Price Shockers - NSE				
Company name	LCP	Prv Close	% Chg	Volume
Delta	96.52	67.1	43.85	653569
Camlin Fine	245.57	187.92	30.68	18830828
Ester Ind	147.16	120.7	21.92	2958201
Nahar Poly Film	354.84	299.25	18.58	622625
Forge Auto Intl	91.6	77.4	18.35	66000
Rexpro Ent	92.6	78.55	17.89	148000
Saksoft	208.67	177.38	17.64	2536208
Saksoft	208.67	177.38	17.64	2536208
GE Vernova TD	2210.5	1885.1	17.26	2414078
Diamond Power	110.33	94.65	16.57	1499507
Oriental Carbon	219.26	188.32	16.43	188707
Shriram Prop	97.39	83.66	16.41	31411133
BEML	4327.6	3717.9	16.4	3397545
Maxposure	67.45	58.1	16.09	49000
Shreyans Ind	221.23	191.07	15.78	196879
Cosmo First	1084.1	940.7	15.24	1278556
Kronox Lab Scie	164.22	143.18	14.69	839451
Sundaram Brake	898.15	783.3	14.66	13206
Nectar Life	27.17	23.71	14.59	5537403
Bayer CropScien	5674	4989.2	13.73	1587546

* the % price rise of the last 3 days

Symbol	LTP	Chng	% Chng	Volume (lacs)	Turnover (crs.)	52w High	Diff with 52w H	52w Low	Diff with 52w L	365 days % chng	30 days % chng
NIFTY 50	24826.20	-174.95	-0.70%	5255.86	33634.71	26277.35	5.52%	21281.45	16.66%	4.00%	8.90%
ADANIENT	2536.00	-11.70	-0.46%	5.15	131.17	3743.90	32.26%	2025.00	25.23%	8.21%	-24.73%
ADANIPTS	1404.80	4.60	0.33%	25.71	360.61	1621.40	13.36%	995.65	41.09%	17.37%	-1.12%
APOLLOHOSP	7050.00	-46.50	-0.66%	2.18	154.25	7545.35	6.56%	5693.20	23.83%	2.06%	19.99%
ASIANPAINT	2327.50	0.30	0.01%	24.85	579.78	3394.90	31.44%	2124.75	9.54%	-4.29%	-19.05%
AXISBANK	1197.90	-17.30	-1.42%	72.49	869.53	1339.65	10.58%	933.50	28.32%	4.19%	3.51%
BAJAJ-AUTO	8950.00	-8.50	-0.09%	4.01	359.59	12774.00	29.94%	7089.35	26.25%	11.51%	0.12%
BAJAJFINSV	2035.00	-17.60	-0.86%	11.76	238.71	2135.00	4.68%	1419.05	43.41%	0.35%	28.15%
BAJFINANCE	9174.00	-95.50	-1.03%	7.15	657.18	9660.00	5.03%	6375.70	43.89%	1.73%	35.58%
BEL	385.45	0.90	0.23%	168.57	651.30	389.90	1.14%	230.00	67.59%	29.22%	29.39%
BHARTIARTL	1847.30	-0.10	-0.01%	58.48	1078.31	1917.00	3.64%	1219.05	51.54%	1.66%	33.05%
CIPLA	1481.20	-3.00	-0.20%	8.82	130.78	1702.05	12.98%	1335.00	10.95%	-2.73%	-0.15%
COALINDIA	399.85	-2.85	-0.71%	65.53	262.63	543.55	26.44%	349.25	14.49%	2.43%	-19.62%
DRREDDY	1244.00	3.10	0.25%	11.45	142.51	1421.49	12.49%	1020.00	21.96%	5.63%	-78.84%
EICHERMOT	5400.00	-27.50	-0.51%	4.53	244.55	5906.50	8.58%	4253.85	26.94%	-2.65%	11.20%
GRASIM	2613.00	-43.40	-1.63%	8.75	228.61	2877.75	9.20%	2171.60	20.33%	-2.87%	8.82%
HCLTECH	1654.90	-18.70	-1.12%	27.40	453.27	2012.20	17.76%	1235.00	34.00%	6.04%	24.41%
HDFCBANK	1926.80	-13.40	-0.69%	130.80	2520.74	1978.90	2.63%	1454.00	32.52%	1.52%	27.88%
HDFCLIFE	776.00	-4.00	-0.51%	34.72	268.91	786.15	1.29%	511.40	51.74%	10.71%	38.03%
HEROMOTOCO	4348.90	-10.50	-0.24%	4.12	178.28	6246.25	30.38%	3344.00	30.05%	11.91%	-14.83%
HINDALCO	661.00	-0.45	-0.07%	42.23	279.26	772.65	14.45%	546.45	20.96%	6.33%	-1.75%
HINDUNILVR	2383.00	-11.10	-0.46%	18.65	443.84	3035.00	21.48%	2136.00	11.56%	2.65%	1.06%
ICICIBANK	1445.30	-15.30	-1.05%	148.43	2145.64	1471.60	1.79%	1051.05	37.51%	3.97%	29.03%
INDUSINDBK	821.00	20.90	2.61%	103.46	845.45	1550.00	47.03%	606.00	35.48%	-2.71%	-44.51%
INFY	1570.90	-9.60	-0.61%	77.75	1218.99	2006.45	21.71%	1307.00	20.19%	6.78%	7.88%
ITC	434.70	-8.20	-1.85%	269.56	1176.33	528.50	17.75%	390.15	11.42%	3.53%	1.54%
JIOFIN	292.65	10.90	3.87%	243.97	701.26	368.60	20.60%	198.65	47.32%	11.34%	-22.89%
JSWSTEEL	1011.40	-20.90	-2.02%	11.58	118.07	1074.90	5.91%	823.80	22.77%	0.38%	13.61%
KOTAKBANK	2075.00	-14.30	-0.68%	34.60	718.07	2301.90	9.86%	1602.45	29.49%	-5.22%	22.65%
LT	3645.00	-3.70	-0.10%	20.14	730.56	3963.50	8.04%	2965.30	22.92%	11.51%	0.63%
M&M	3042.00	-38.20	-1.24%	25.99	790.32	3270.95	7.00%	2425.00	25.44%	7.54%	19.40%
MARUTI	12366.00	-55.00	-0.44%	3.45	426.67	13680.00	9.61%	10725.00	15.30%	6.18%	-4.46%
NESTLEIND	2460.00	6.00	0.24%	7.92	194.38	2778.00	11.45%	2110.00	16.59%	1.68%	-0.56%
NTPC	338.50	-5.00	-1.46%	249.34	843.80	448.45	24.52%	292.80	15.61%	-3.63%	-8.39%
ONGC	244.60	-1.34	-0.54%	97.11	237.33	345.00	29.10%	205.00	19.32%	-0.16%	-13.17%
POWERGRID	295.15	-1.55	-0.52%	170.74	502.21	366.25	19.41%	247.30	19.35%	-3.20%	-6.93%
RELIANCE	1424.20	-10.60	-0.74%	126.39	1796.96	1608.80	11.47%	1114.85	27.75%	10.34%	-51.54%
SBILIFE	1804.60	3.00	0.17%	12.20	219.83	1936.00	6.79%	1307.70	38.00%	6.28%	25.44%
SBIN	794.25	-0.15	-0.02%	119.94	954.22	912.00	12.91%	680.00	16.80%	-0.53%	-4.13%
SHRIRAMFIN	659.50	-5.00	-0.75%	24.93	165.09	730.45	9.71%	438.60	50.36%	1.42%	-72.28%
SUNPHARMA	1681.50	5.40	0.32%	28.01	470.45	1960.35	14.22%	1377.20	22.10%	-6.23%	12.74%
TATACONSUM	1136.50	-9.80	-0.85%	9.02	102.45	1250.10	9.09%	882.90	28.72%	-0.81%	4.38%
TATAMOTORS	717.00	-12.00	-1.65%	122.20	879.48	1179.00	39.19%	535.75	33.83%	11.26%	-24.11%
TATASTEEL	161.76	-0.75	-0.46%	232.94	377.51	184.60	12.37%	122.62	31.92%	17.04%	-7.06%
TCS	3501.00	-36.30	-1.03%	24.67	863.71	4592.25	23.76%	3056.05	14.56%	2.59%	-8.11%
TECHM	1594.80	-6.60	-0.41%	13.94	221.81	1807.70	11.78%	1193.65	33.61%	9.53%	21.16%
TITAN	3589.60	-20.70	-0.57%	10.20	365.91	3867.00	7.17%	2925.00	22.72%	7.28%	5.80%
TRENT	5570.00	44.00	0.80%	10.19	567.48	8345.00	33.25%	4196.00	32.75%	7.41%	17.19%
ULTRACEMCO	11422.00	-267.00	-2.28%	4.78	547.18	12339.00	7.43%	9534.95	19.79%	-4.48%	14.25%
WIPRO	248.35	-1.89	-0.76%	68.61	170.66	324.60	23.49%	208.50	19.11%	3.88%	-46.03%
ETERNAL	224.95	-1.85	-0.82%	2246.44	5049.11	304.70	26.17%	146.30	53.76%	-0.88%	#VALUE!

Disclaimer / Disclosures

ANALYST CERTIFICATION

I, Mrs. Vaishali Parekh B.com, Research Analyst, author and the name subscribed to this report, hereby certify that all of the views expressed in this research report accurately reflect our views about the subject issuer(s) or securities. We also certify that no part of our compensation was, is, or will be directly or indirectly related to the specific recommendation(s) or view(s) in this report.

Terms & conditions and other disclosures:

Prabhudas Lilladher Pvt. Ltd, Mumbai, India (hereinafter referred to as "PL") is engaged in the business of Stock Broking, Portfolio Manager, Depository Participant and distribution for third party financial products. PL is a subsidiary of Prabhudas Lilladher Advisory Services Pvt Ltd. which has its various subsidiaries engaged in business of commodity broking, investment banking, financial services (margin funding) and distribution of third party financial/other products, details in respect of which are available at www.plindia.com

This document has been prepared by the Research Division of PL and is meant for use by the recipient only as information and is not for circulation. This document is not to be reported or copied or made available to others without prior permission of PL. It should not be considered or taken as an offer to sell or a solicitation to buy or sell any security.

The information contained in this report has been obtained from sources that are considered to be reliable. However, PL has not independently verified the accuracy or completeness of the same. Neither PL nor any of its affiliates, its directors or its employees accepts any responsibility of whatsoever nature for the information, statements and opinion given, made available or expressed herein or for any omission therein.

Recipients of this report should be aware that past performance is not necessarily a guide to future performance and value of investments can go down as well. The suitability or otherwise of any investments will depend upon the recipient's particular circumstances and, in case of doubt, advice should be sought from an independent expert/advisor.

Either PL or its affiliates or its directors or its employees or its representatives or its clients or their relatives may have position(s), make market, act as principal or engage in transactions of securities of companies referred to in this report and they may have used the research material prior to publication.

PL may from time to time solicit or perform investment banking or other services for any company mentioned in this document.

PL is registered as Research Analyst under Securities and Exchange Board of India (Research Analysts) Regulations, 2014 PL submits that no material disciplinary action has been taken on us by any Regulatory Authority impacting Equity Research Analysis activities.

PL or its research analysts or its associates or his relatives do not have any financial interest in the subject company.

PL or its research analysts or its associates or his relatives do not have actual/beneficial ownership of one per cent or more securities of the subject company at the end of the month immediately preceding the date of publication of the research report.

PL or its research analysts or its associates or his relatives do not have any material conflict of interest at the time of publication of the research report.

PL or its associates might have received compensation from the subject company in the past twelve months.

PL or its associates might have managed or co-managed public offering of securities for the subject company in the past twelve months or mandated by the subject company for any other assignment in the past twelve months.

PL or its associates might have received any compensation for investment banking or merchant banking or brokerage services from the subject company in the past twelve months.

PL or its associates might have received any compensation for products or services other than investment banking or merchant banking or brokerage services from the subject company in the past twelve months PL or its associates might have received any compensation or other benefits from the subject company or third party in connection with the research report.

PL encourages independence in research report preparation and strives to minimize conflict in preparation of research report. PL or its analysts did not receive any compensation or other benefits from the subject Company or third party in connection with the preparation of the research report. PL or its Research Analysts do not have any material conflict of interest at the time of publication of this report.

It is confirmed that Mrs.Vaishali Parekh B.com, Research Analyst of this report has not received any compensation from the companies mentioned in the report in the preceding twelve months compensation of our Research Analysts is not based on any specific merchant banking, investment banking or brokerage service transactions.

The Research analysts for this report certifies that all of the views expressed in this report accurately reflect his or her personal views about the subject company or companies and its or their securities, and no part of his or her compensation was, is or will be, directly or indirectly related to specific recommendations or views expressed in this report.

The research analysts for this report has not served as an officer, director or employee of the subject company PL or its research analysts have not engaged in market making activity for the subject company

Our sales people, traders, and other professionals or affiliates may provide oral or written market commentary or trading strategies to our clients that reflect opinions that are contrary to the opinions expressed herein, and our proprietary trading and investing businesses may make investment decisions that are inconsistent with the recommendations expressed herein. In reviewing these materials, you should be aware that any or all of the foregoing, among other things, may give rise to real or potential conflicts of interest.

PL and its associates, their directors and employees may (a) from time to time, have a long or short position in, and buy or sell the securities of the subject company or (b) be engaged in any other transaction involving such securities and earn brokerage or other compensation or act as a market maker in the financial instruments of the subject company or act as an advisor or lender/borrower to the subject company or may have any other potential conflict of interests with respect to any recommendation and other related information and opinions.