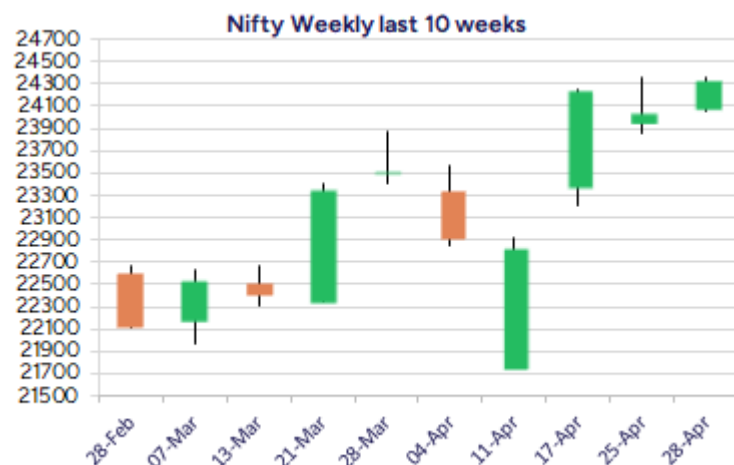
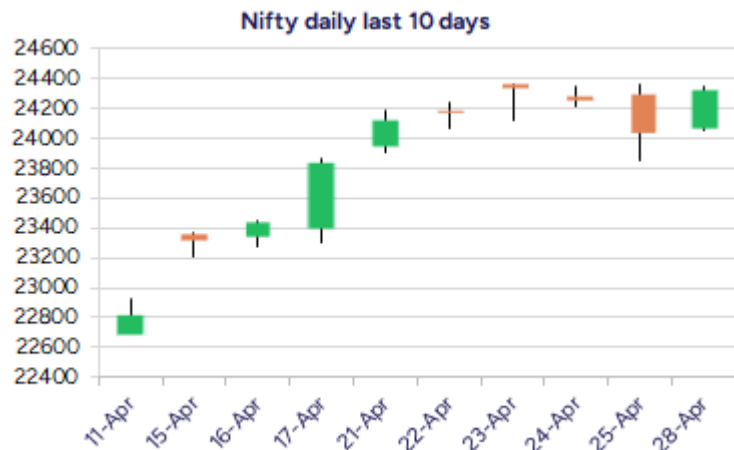


Date: 29<sup>th</sup> April 2025

\* Sensex 80218.37 + 1005.84

\* Nifty 24328.50 + 289.15

\* Bank Nifty 55432.80 + 768.75



\*Blue candle → Close rate > Open rate \* Red candle → Close rate < Open rate

## Market Preview

### Nifty above 24300

Nifty witnessed a significant gain above the 200 DMA level to close above the 24300 zone with sentiment getting better and better. Bank Nifty also witnessed a decent gain to close near the 55500 level and has indicated strength to anticipate for further rise. The market breadth turned strong, with the advance decline indicating a ratio of 3:2 at close.

## Market Forecast

### Nifty daily range 24200-24600

Nifty, witnessed a significant bounce back to regain strength and has once again arrived at the crucial resistance hurdle of 24350 zone erasing the nervous sentiment indicated after last week's heavy profit booking activity. As of now, the index has maintained near the important 200 period SMA at 24050 level and on the upside, would need a decisive breach above the resistance zone of 24350 level to trigger for a breakout anticipating for further rise in the coming days.

BankNifty, after the short span of profit booking witnessed has indicated a strong pullback to close above the 55400 zone and maintaining the previous peak zone of 54500 zone as support has improved the bias to anticipate for further upward move in the coming sessions. As mentioned earlier, the index would have the near-term support positioned near the 53800 level which needs to be sustained in the coming sessions and a decisive breach above 56000 zone shall trigger for fresh upward move with targets of 57400 and 58600 levels achievable.

The support for the day is seen at 24200 level while the resistance is seen at 24600 levels. BankNifty would have the daily range of 55000-56000 levels.

Indices	Period	Closing	% Chng	Trend	Reversal	2 Sup	1 Sup	Pivot	1 Res	2 Res
Nifty	Daily	24328.50	1.20%	1	24323.60	23945	24137	24246	24438	24547
	Weekly	24039.35	0.79%	5	22874.25	23570	23805	24085	24319	24600
	Monthly	23519.35	0.05%	-6	25020.35	21213	22366	23118	24271	25022
Bank Nifty	Daily	55432.80	1.41%	-2	56018.05	54202	54818	55198	55813	56193
	Weekly	54664.05	0.69%	5	51255.25	53066	53865	54981	55780	56896
	Monthly	51564.85	3.99%	-6	52195.95	46118	48841	50451	53175	54785
Sensex	Daily	80218.37	1.27%	1	80142.60	78980	79599	79961	80580	80941
	Weekly	79212.53	0.84%	6	76429.20	77736	78474	79345	80083	80954
	Monthly	77414.92	-0.11%	-6	82130.50	70156	73785	76263	79893	82371

## Daily Trend turned up

Scrip Name	LCP	Curr Trnd	Reversal
AJANTPHARM	2764.18	-1	2725.5
BALKRISIND	2555.94	-1	2542.1
BEL	305.12	-1	304.4
BHARATFORG	1107.75	-1	1097.4
CASTROLIND	207.3	-1	205.9
CIPLA	1552.74	-1	1535.15
DCBBANK	137.87	-1	130.6
DRREDDY	1196.73	-1	1184.9
FORTIS	670.7	-1	665.65
GLENMARK	1395.39	-1	1368.15
HAL	4385.74	-1	4338.5
HINDZINC	453.17	-1	450.8

\* Trends turned Up after a significant period

## Daily Trend turned Down

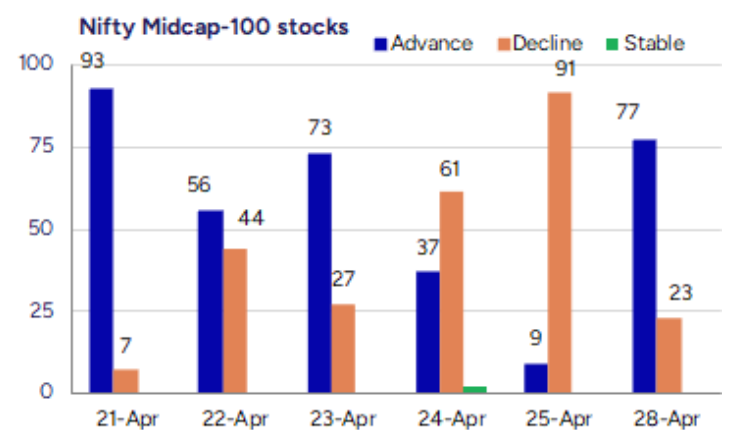
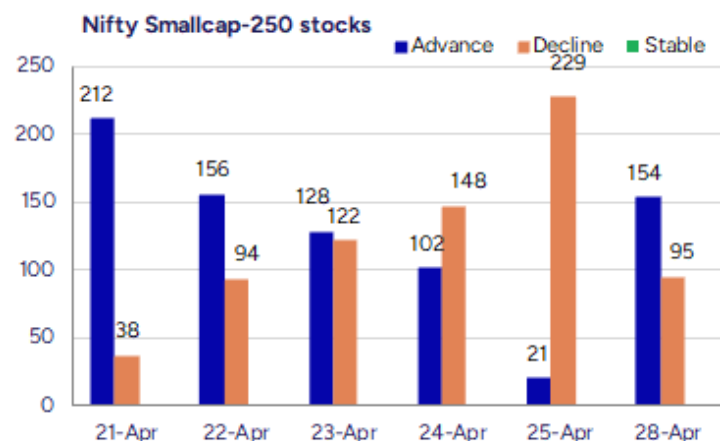
Scrip Name	LCP	Curr Trnd	Reversal
AARTIIND	429.95	9	431
ARVIND	384.21	9	387.35
GODREJCP	1259.16	3	1263.3
GSPL	317.77	1	320.1
LALPATHLAB	2824.49	15	2845.85
MAITHANALL	967.7	8	969.3
NAUKRI	6971.89	9	6994.3

\* Trends turned Down after a significant period

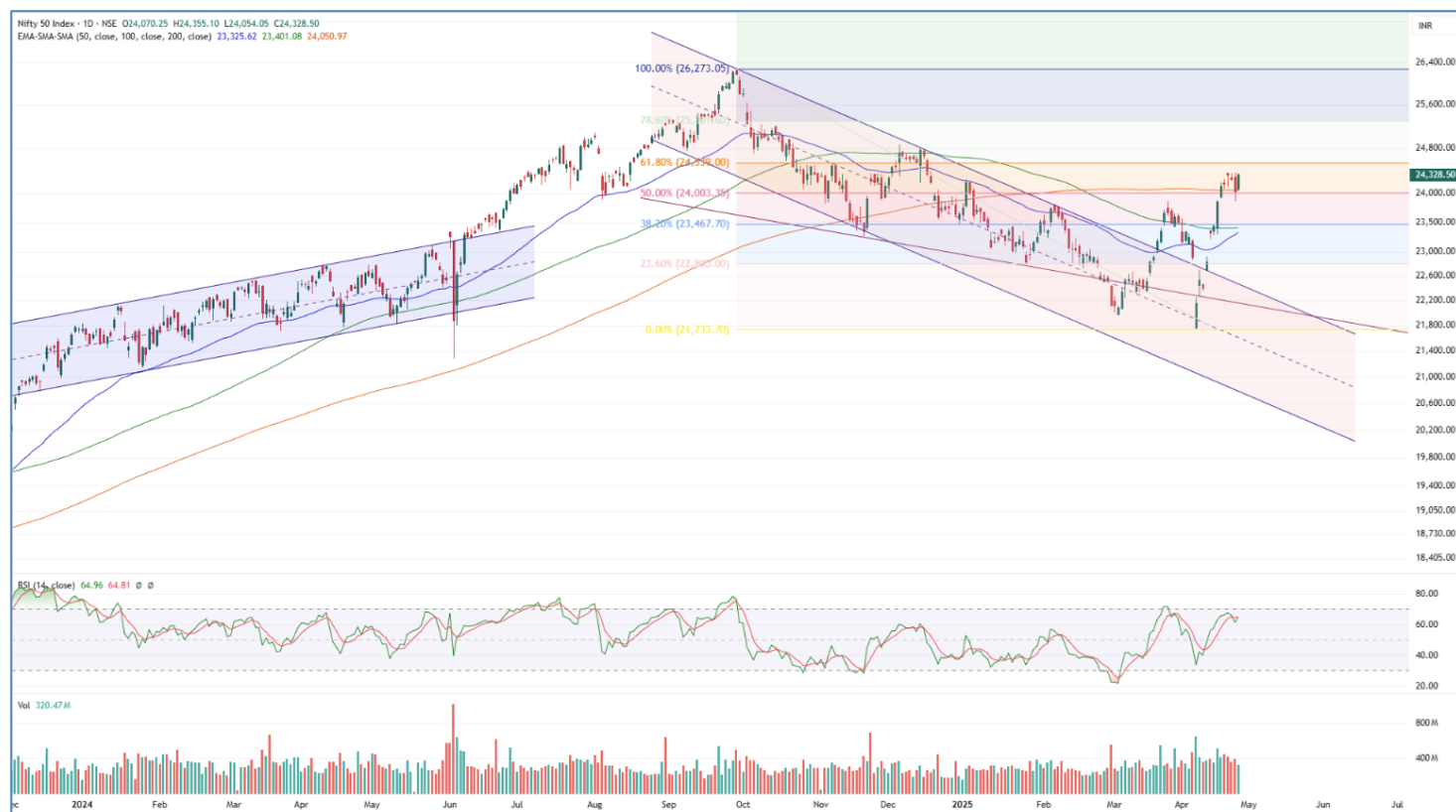
## Gainers - Losers ( Nifty 500 Stocks )

Gainers			
Company Name	Last Price	% Gain	Volume
Jayaswal Neco	42.37	19.99	1055979
Positron Energy	387.45	19.99	117000
DUGLOBAL	53.8	19.56	87500
Paramount Dye	61	16.63	84000
Premier Explo	438.5	13.29	2704375
Oriental Trimex	10.3	12.81	3526549
Inspire Films	28.25	11	2000

Losers			
Company Name	Last Price	% Loss	Volume
Lloyds Engineer	59.38	-16.99	17558680
Tejas Networks	747.85	-12.93	10933206
Assoc Alcohol	1133.9	-11.98	291444
SML Isuzu	1596.1	-10	90479
Avantel	116.86	-9.98	4440998
Repro India	501.7	-8.67	177033
Kamat Hotels	245.4	-8.65	786948



## Nifty Daily chart with RSI indicator



## BankNifty Daily chart with RSI indicator



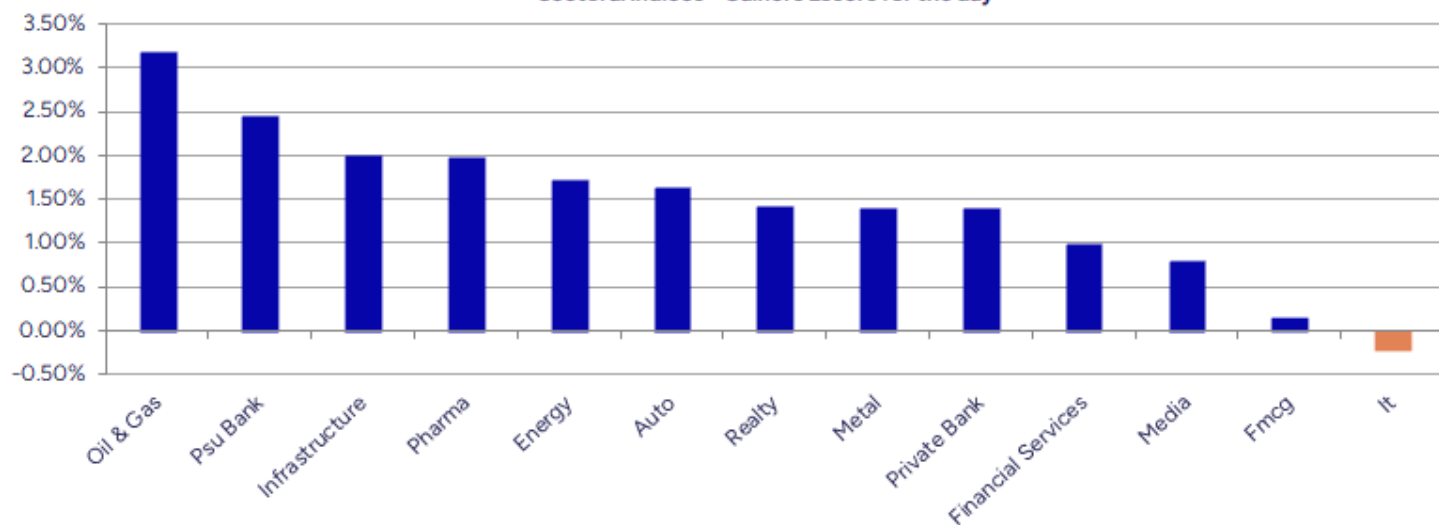
Breakouts - Cross above 200 DMA			
Company Name	LCP	Change %	200 DMA
CCCL	15.25	9.40	13.94
Paras Defence	1143.75	5.66	1082.48
Mohini Health &	61.7	4.77	58.89
Hindustan Aeron	4426.3	3.32	4284.1
Capital SFB	303.75	2.56	296.16
BPCL	310	2.44	302.63
Torrent Pharma	3335	2.42	3256.22
Garden Reach Sh	1749.6	2.36	1709.28
Jayaswal Neco	42.37	2.12	41.49
AYM Syntex	211.53	2.10	207.18
Reliance	1368.8	2.07	1341.08
Kalyani Forge	575.4	1.96	564.33
M&M	2930.6	1.93	2875.15
Mirae Nifty50	259.99	1.33	256.59
DSP Bse Sensex	81.24	1.33	80.17
Indraprastha	415.15	1.32	409.74
HDFCPSUBK	67.14	1.31	66.27
Azad Eng	1565.6	129.00%	1545.65

\* Stocks crossing above its Simple Moving Average (200DMA)

Breakdown - Cross below 200 DMA			
Company Name	LCP	Change %	200 DMA
Repro India	501.7	-8.13	546.09
RPG Life	2115.9	-4.81	2222.8
SML Isuzu	1596.1	-4.03	1663.14
Sanofi India	6064	-2.80	6238.65
Megasoft	67.42	-1.76	68.63
Ducol Organics	124.5	-1.10	125.88
Borosil Renew	503.7	-1.05	509.06
Rainbow Childre	1383.5	-0.79	1394.48
Syrma SGS	481.95	-0.65	485.12
Sapphire Foods	320.45	-0.64	322.5
EIH	380.25	-0.63	382.67
Godawari Power	193.75	-0.63	194.97
Shri Rama Multi	34.9	-0.54	35.09
Zenithexpo	272.08	-0.54	273.56
Vardhman Steels	250.36	-0.42	251.41
Indiabulls Ent	15.97	-0.31	16.02
Aarey Drugs	54.7	-0.13	54.77
Reliance Infra	255.3	-0.11	255.58

\* Stocks crossing below its Simple Moving Average (200DMA)

Sectoral Indices - Gainers Losers for the day



Stocks witnessing a volume surge as compared to their 5 day average volume

Watch out for the stocks that have seen a huge spurt in its share price over the last three days

Volume Shockers - NSE					
Company name	LCP	% Chg	Volume	Avg Vol *	% Chg
Paras Defence	1143.75	9.44	3519619	74764	4608
Data Patterns	2236.2	7.17	3964674	106334	3628
Lakshmi Finance	223.6	9.82	341791	9473	3508
Premier Explo	438.5	13.29	2704115	77069	3409
Jai Balaji Ind	123.01	1.84	1903803	54390	3400
Manorama Indust	1294	6.88	1583087	48536	3162
Shriram Finance	622	-5.07	32216443	1003099	3112
Krishna Institu	671.25	-0.49	1795492	59456	2920
Tejas Networks	747.85	-12.93	10932245	434698	2415
Barbeque Nat	306.65	10.41	3054413	135096	2161
HEG	478.4	3.08	1775175	80062	2117
Diamond Power	95.9	-0.67	141314	6800	1978
DCB Bank	139.45	9.78	19603324	1072955	1727
FM	9013.5	-1.62	484807	27305	1676
Kamat Hotels	245.4	-8.65	786898	48751	1514
Jash Engineerin	618.8	1.43	414076	26774	1447
BEW Engineering	198	-3.18	16500	1125	1367
SecMark Consult	115.67	9.99	33086	2849	1061
RBL Bank	207.1	10.11	84706500	7686833	1002
Transformers	504.85	-1.12	1356147	131705	930

\* the Average Volume of last 5 days

Price Shockers - NSE				
Company name	LCP	Prv Close	% Chg	Volume
Country Condos	11.92	8.97	32.89	780244
Lakshmi Finance	223.6	174.3	28.28	341791
Inspire Films	28.25	23.4	20.73	2000
Thyrocare Techn	912.1	769.2	18.58	355521
Lotus Eye Care	79.04	66.8	18.32	390313
Carraro India	380.25	323	17.72	619018
Jayaswal Neco	42.37	36.11	17.34	1055979
Eldeco Housing	850.1	733.85	15.84	4938
E2E Networks	2307.3	1993.3	15.75	31072
Sical Logistics	107.65	93	15.75	4655
Bhartiya Inter	625.9	540.75	15.75	5190
SEL Mgf Company	44.24	38.23	15.72	8023
Cadsys India	95	82.25	15.5	500
Abhishek Integr	86.25	74.95	15.08	16500
Best Agrolife	393.45	342.85	14.76	27358
Atlantaa	42	36.61	14.72	52113
Indian Card	321.14	280.38	14.54	29269
GSS Infotech	42.88	37.48	14.41	427192
Purple United	229.25	201.25	13.91	90000
Morepen Lab	62.05	54.52	13.81	26324503

\* the % price rise of the last 3 days



Nifty 50 stocks - Summary Details											
Symbol	LTP	Chng	% Chng	Volume (lacs)	Turnover (crs.)	52w High	Diff with 52w H	52w Low	Diff with 52w L	365 days % chng	30 days % chng
NIFTY 50	24328.50	289.15	1.20%	3204.52	28277.71	26277.35	7.42%	21281.45	14.32%	2.21%	7.22%
ADANIENT	2369.10	14.80	0.63%	6.81	161.72	3743.90	36.72%	2025.00	16.99%	1.66%	-23.57%
ADANIPTS	1207.00	14.00	1.17%	26.46	318.74	1621.40	25.56%	995.65	21.23%	0.85%	-9.94%
APOLLOHOSP	7033.00	80.00	1.15%	3.80	266.26	7545.35	6.79%	5693.20	23.53%	5.09%	11.10%
ASIANPAINT	2446.20	14.60	0.60%	5.55	135.45	3394.90	27.94%	2124.75	15.13%	3.89%	-14.51%
AXISBANK	1191.30	25.00	2.14%	55.23	654.08	1339.65	11.07%	933.50	27.62%	5.83%	3.18%
BAJAJ-AUTO	8097.50	63.50	0.79%	2.82	227.73	12774.00	36.61%	7089.35	14.22%	1.97%	-10.48%
BAJAJFINSV	2050.00	4.50	0.22%	63.11	1294.74	2135.00	3.98%	1419.05	44.46%	1.90%	28.06%
BAJFINANCE	9075.00	-37.00	-0.41%	9.95	901.68	9660.00	6.06%	6375.70	42.34%	1.86%	35.37%
BEL	305.30	7.70	2.59%	299.10	912.63	340.50	10.34%	221.00	38.14%	-1.23%	24.54%
BHARTIARTL	1820.30	3.10	0.17%	33.02	601.70	1904.30	4.41%	1219.05	49.32%	4.83%	37.04%
CIPLA	1552.00	26.10	1.71%	12.07	187.45	1702.05	8.82%	1317.25	17.82%	5.80%	8.29%
COALINDIA	397.05	3.90	0.99%	34.55	137.03	543.55	26.95%	349.25	13.69%	-1.27%	-13.75%
DRREDDY	1202.40	27.60	2.35%	12.37	148.00	1421.49	15.41%	1020.00	17.88%	2.67%	-81.21%
EICHERMOT	5618.00	42.50	0.76%	4.04	226.72	5906.50	4.88%	4253.85	32.07%	4.26%	21.18%
GRASIM	2752.00	17.20	0.63%	4.17	114.88	2877.75	4.37%	2171.60	26.73%	4.74%	16.75%
HCLTECH	1550.00	-10.20	-0.65%	26.19	405.61	2012.20	22.97%	1235.00	25.51%	-0.90%	7.08%
HDFCBANK	1921.00	9.80	0.51%	69.60	1337.84	1978.90	2.93%	1426.80	34.64%	4.54%	26.59%
HDFCLIFE	707.65	3.10	0.44%	19.44	137.33	761.20	7.03%	511.40	38.38%	2.75%	19.85%
HEROMOTOCO	3920.60	25.10	0.64%	5.21	203.22	6246.25	37.23%	3344.00	17.24%	4.63%	-13.27%
HINDALCO	628.85	6.75	1.09%	39.66	249.25	772.65	18.61%	546.45	15.08%	-8.84%	-4.19%
HINDUNILVR	2317.60	-14.60	-0.63%	15.55	361.71	3035.00	23.64%	2136.00	8.50%	3.25%	4.93%
ICICIBANK	1428.00	23.20	1.65%	109.48	1562.70	1436.00	0.56%	1051.05	35.86%	4.19%	26.80%
INDUSINDBK	830.50	8.15	0.99%	69.30	576.22	1550.00	46.42%	606.00	37.05%	26.54%	-43.15%
INFY	1481.00	0.80	0.05%	58.86	870.10	2006.45	26.19%	1307.00	13.31%	-5.76%	3.49%
ITC	428.75	0.95	0.22%	62.87	269.44	528.50	18.87%	390.15	9.89%	4.41%	-2.77%
JIOFIN	258.00	4.95	1.96%	193.79	497.93	387.35	33.39%	198.65	29.88%	11.23%	-33.71%
JSWSTEEL	1058.30	29.90	2.91%	14.86	156.05	1074.90	1.54%	823.80	28.47%	-3.27%	15.91%
KOTAKBANK	2222.20	17.80	0.81%	24.38	542.14	2301.90	3.46%	1543.85	43.94%	1.53%	37.05%
LT	3325.00	52.90	1.62%	16.89	560.38	3963.50	16.11%	2965.30	12.13%	-6.31%	-9.24%
M&M	2930.00	65.80	2.30%	18.65	542.93	3270.95	10.42%	2001.00	46.43%	7.44%	40.07%
MARUTI	11809.00	111.00	0.95%	4.57	535.18	13680.00	13.68%	10725.00	10.11%	1.53%	-7.91%
NESTLEIND	2402.00	-11.50	-0.48%	9.81	235.49	2778.00	13.53%	2110.00	13.84%	7.23%	-2.79%
NTPC	360.50	4.05	1.14%	53.16	191.80	448.45	19.61%	292.80	23.12%	-0.32%	0.13%
ONGC	250.50	4.17	1.69%	76.70	191.72	345.00	27.39%	205.00	22.20%	-0.02%	-12.93%
POWERGRID	308.45	1.95	0.64%	73.15	225.75	366.25	15.78%	247.30	24.73%	5.56%	4.88%
RELIANCE	1366.30	65.90	5.07%	311.04	4214.60	1608.80	15.07%	1114.85	22.55%	1.98%	-55.24%
SBILIFE	1721.00	25.90	1.53%	21.01	360.16	1936.00	11.11%	1307.70	31.61%	9.51%	19.77%
SBIN	816.55	17.90	2.24%	113.18	921.28	912.00	10.47%	680.00	20.08%	3.52%	-0.33%
SHRIRAMFIN	621.60	-33.60	-5.13%	322.21	1984.00	730.45	14.90%	438.60	41.72%	-0.12%	-73.78%
SUNPHARMA	1842.20	54.80	3.07%	32.16	588.64	1960.35	6.03%	1377.20	33.76%	3.04%	18.64%
TATACONSUM	1154.00	-1.70	-0.15%	6.63	76.66	1250.10	7.69%	882.90	30.71%	15.35%	4.81%
TATAMOTORS	668.00	12.75	1.95%	102.43	679.94	1179.00	43.34%	535.75	24.69%	-2.85%	-34.44%
TATASTEEL	141.99	3.14	2.26%	269.70	380.92	184.60	23.08%	122.62	15.80%	-9.98%	-16.25%
TCS	3441.00	-7.00	-0.20%	15.93	547.87	4592.25	25.07%	3056.05	12.60%	-4.39%	-9.77%
TECHM	1461.00	-1.00	-0.07%	20.79	302.88	1807.70	19.18%	1172.80	24.57%	3.08%	14.33%
TITAN	3369.90	4.70	0.14%	3.84	129.63	3867.00	12.85%	2925.00	15.21%	9.85%	-6.13%
TRENT	5209.00	64.00	1.24%	9.82	511.11	8345.00	37.58%	4052.40	28.54%	-3.38%	19.52%
ULTRACEMCO	12128.00	-109.00	-0.89%	5.17	629.18	12339.00	1.71%	9408.05	28.91%	6.32%	26.14%
WIPRO	240.70	-0.20	-0.08%	142.18	341.88	324.60	25.85%	208.50	15.44%	-8.14%	-48.15%
ETERNAL	226.70	-2.11	-0.92%	293.25	667.37	304.70	25.60%	146.30	54.96%	#VALUE!	#VALUE!

## Disclaimer / Disclosures

### ANALYST CERTIFICATION

I, Mrs. Vaishali Parekh B.com, Research Analyst, author and the name subscribed to this report, hereby certify that all of the views expressed in this research report accurately reflect our views about the subject issuer(s) or securities. We also certify that no part of our compensation was, is, or will be directly or indirectly related to the specific recommendation(s) or view(s) in this report.

Terms & conditions and other disclosures:

Prabhudas Lilladher Pvt. Ltd, Mumbai, India (hereinafter referred to as "PL") is engaged in the business of Stock Broking, Portfolio Manager, Depository Participant and distribution for third party financial products. PL is a subsidiary of Prabhudas Lilladher Advisory Services Pvt Ltd. which has its various subsidiaries engaged in business of commodity broking, investment banking, financial services (margin funding) and distribution of third party financial/other products, details in respect of which are available at [www.plindia.com](http://www.plindia.com)

This document has been prepared by the Research Division of PL and is meant for use by the recipient only as information and is not for circulation. This document is not to be reported or copied or made available to others without prior permission of PL. It should not be considered or taken as an offer to sell or a solicitation to buy or sell any security.

The information contained in this report has been obtained from sources that are considered to be reliable. However, PL has not independently verified the accuracy or completeness of the same. Neither PL nor any of its affiliates, its directors or its employees accepts any responsibility of whatsoever nature for the information, statements and opinion given, made available or expressed herein or for any omission therein.

Recipients of this report should be aware that past performance is not necessarily a guide to future performance and value of investments can go down as well. The suitability or otherwise of any investments will depend upon the recipient's particular circumstances and, in case of doubt, advice should be sought from an independent expert/advisor.

Either PL or its affiliates or its directors or its employees or its representatives or its clients or their relatives may have position(s), make market, act as principal or engage in transactions of securities of companies referred to in this report and they may have used the research material prior to publication.

PL may from time to time solicit or perform investment banking or other services for any company mentioned in this document.

PL is registered as Research Analyst under Securities and Exchange Board of India (Research Analysts) Regulations, 2014 PL submits that no material disciplinary action has been taken on us by any Regulatory Authority impacting Equity Research Analysis activities.

PL or its research analysts or its associates or his relatives do not have any financial interest in the subject company.

PL or its research analysts or its associates or his relatives do not have actual/beneficial ownership of one per cent or more securities of the subject company at the end of the month immediately preceding the date of publication of the research report.

PL or its research analysts or its associates or his relatives do not have any material conflict of interest at the time of publication of the research report.

PL or its associates might have received compensation from the subject company in the past twelve months.

PL or its associates might have managed or co-managed public offering of securities for the subject company in the past twelve months or mandated by the subject company for any other assignment in the past twelve months.

PL or its associates might have received any compensation for investment banking or merchant banking or brokerage services from the subject company in the past twelve months.

PL or its associates might have received any compensation for products or services other than investment banking or merchant banking or brokerage services from the subject company in the past twelve months PL or its associates might have received any compensation or other benefits from the subject company or third party in connection with the research report.

PL encourages independence in research report preparation and strives to minimize conflict in preparation of research report. PL or its analysts did not receive any compensation or other benefits from the subject Company or third party in connection with the preparation of the research report. PL or its Research Analysts do not have any material conflict of interest at the time of publication of this report.

It is confirmed that Mrs.Vaishali Parekh B.com, Research Analyst of this report has not received any compensation from the companies mentioned in the report in the preceding twelve months compensation of our Research Analysts is not based on any specific merchant banking, investment banking or brokerage service transactions.

The Research analysts for this report certifies that all of the views expressed in this report accurately reflect his or her personal views about the subject company or companies and its or their securities, and no part of his or her compensation was, is or will be, directly or indirectly related to specific recommendations or views expressed in this report.

The research analysts for this report has not served as an officer, director or employee of the subject company PL or its research analysts have not engaged in market making activity for the subject company

Our sales people, traders, and other professionals or affiliates may provide oral or written market commentary or trading strategies to our clients that reflect opinions that are contrary to the opinions expressed herein, and our proprietary trading and investing businesses may make investment decisions that are inconsistent with the recommendations expressed herein. In reviewing these materials, you should be aware that any or all of the foregoing, among other things, may give rise to real or potential conflicts of interest.

PL and its associates, their directors and employees may (a) from time to time, have a long or short position in, and buy or sell the securities of the subject company or (b) be engaged in any other transaction involving such securities and earn brokerage or other compensation or act as a market maker in the financial instruments of the subject company or act as an advisor or lender/borrower to the subject company or may have any other potential conflict of interests with respect to any recommendation and other related information and opinions.