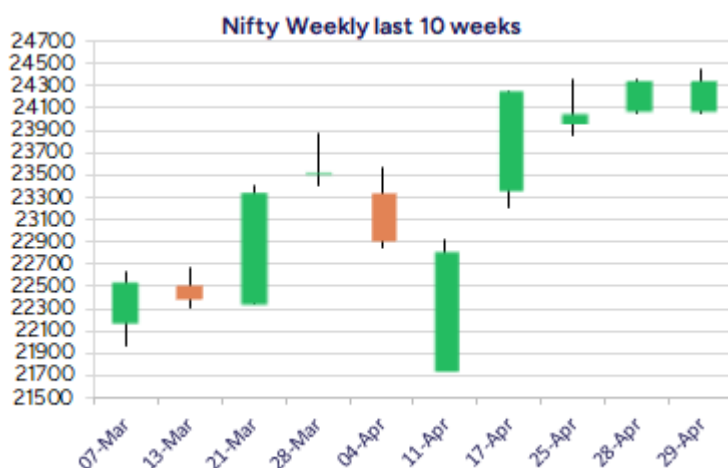
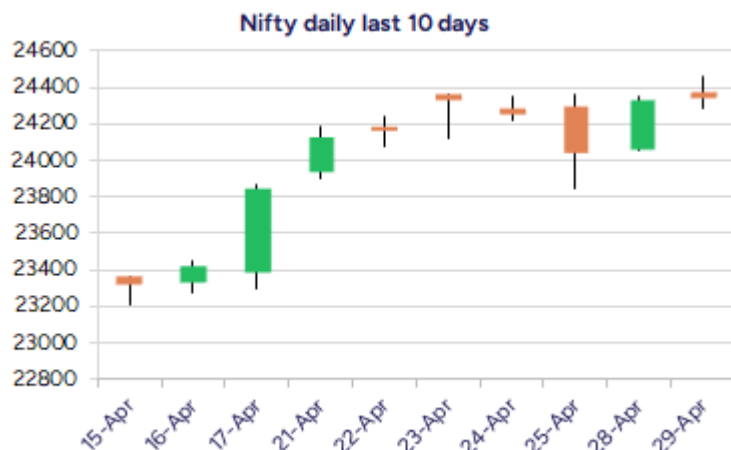


Date: 30th April 2025

* Sensex 80288.38 + 70.01

* Nifty 24335.95 + 07.45

* Bank Nifty 55391.25 - 41.55



*Blue candle → Close rate > Open rate * Red candle → Close rate < Open rate

Market Preview

Nifty hovers near 24350 zone

Nifty witnessed some consolidation near the 24350 zone with the sentiment slightly turning into cautious mode with the ongoing geo-political tensions. BankNifty has maintained near the 55400 zone with bias still maintained positive and would need to establish stability and conviction for further developments. The market breadth was almost flat with the advance decline indicating an almost neutral ratio at close.

Market Forecast

Nifty daily range 24200-24500

Nifty, after opening on a positive note to scale 24450 zone, once again with some profit booking consolidated near the 24350 zone to end the session on a flat note with bias maintained positive but sentiment slightly turning weak with a cautious approach. As mentioned earlier, the index would have the near-term support near the important 200 period MA at 24050 level which if sustained, can regain with the positive move for further rise in the coming days.

BankNifty, erased the positive opening session almost scaling the 56000 level and with profit booking witnessed closed on a flat note near the 55400 zone with bias still maintained strong having the important near-term support at 54500 zone which needs to be sustained. The index on the daily chart has indicated a flag pattern and once a decisive breach above 55700 is confirmed, we can expect for another fresh round of momentum to carry on with the positive with fresh upside targets achievable in the coming days.

The support for the day is seen at 24200 levels while the resistance is seen at 24500 levels. BankNifty would have the daily range of 55000-56000 levels.

Indices	Period	Closing	% Chng	Trend	Reversal	2 Sup	1 Sup	Pivot	1 Res	2 Res
Nifty	Daily	24335.95	0.03%	2	24347.80	24195	24265	24361	24432	24528
	Weekly	24039.35	0.79%	5	22874.25	23570	23805	24085	24319	24600
	Monthly	23519.35	0.05%	-6	25020.35	21213	22366	23118	24271	25022
Bank Nifty	Daily	55391.25	-0.07%	-3	55948.55	54842	55117	55537	55812	56232
	Weekly	54664.05	0.69%	5	51255.25	53066	53865	54981	55780	56896
	Monthly	51564.85	3.99%	-6	52195.95	46118	48841	50451	53175	54785
Sensex	Daily	80288.38	0.09%	2	80242.60	79818	80053	80357	80592	80897
	Weekly	79212.53	0.84%	6	76429.20	77736	78474	79345	80083	80954
	Monthly	77414.92	-0.11%	-6	82130.50	70156	73785	76263	79893	82371

Daily Trend turned up			
Scrip Name	LCP	Curr Trnd	Reversal
BEML	3211.2	-2	3154.6
BPCL	311.7	-4	308.5
BSE	6641.5	-2	6498.65
GLAXO	2902.2	-2	2868.4
GSPL	329.95	-1	321.85
GUJGASLTD	468.45	-2	458.25
INDIACEM	315.15	-2	289.55
INDIAMART	2331	-2	2308.9
KAJARIACER	815.5	-2	806.2
MARUTI	11841	-2	11776.95
TATACHEM	857.2	-2	850.7
TRENT	5391.5	-2	5268.5

* Trends turned Up after a significant period

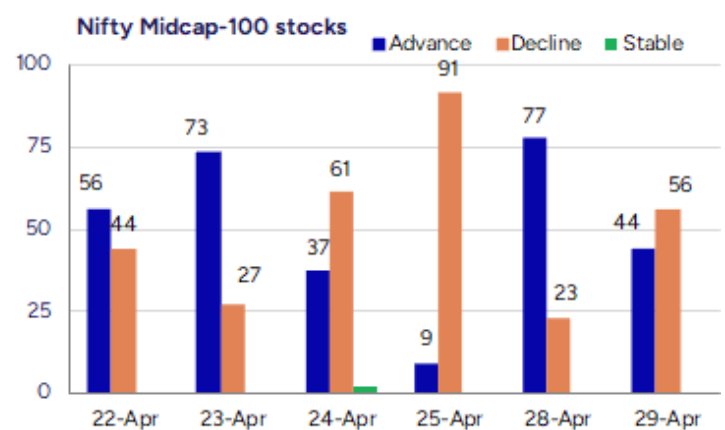
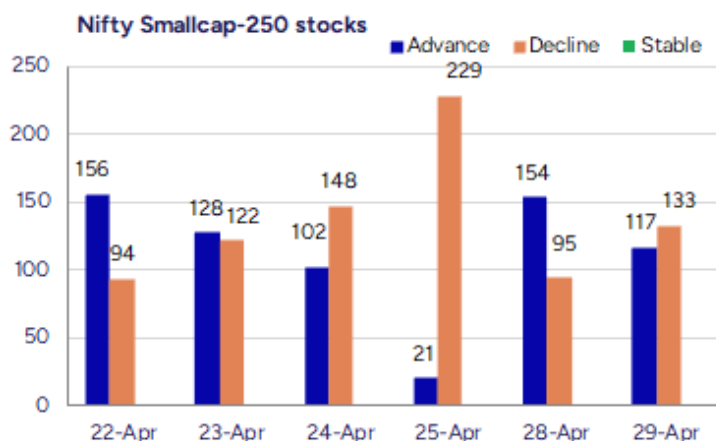
Daily Trend turned Down			
Scrip Name	LCP	Curr Trnd	Reversal
AUROPHARMA	1209.6	9	1239.65
CASTROLIND	203.21	1	206.1
DABUR	483.65	10	483.7
DRREDDY	1176	1	1191.3
GODREJPROP	2099.1	9	2099.8
HINDZINC	445.45	1	452.45
IEX	192.82	9	192.9
JINDALSTEL	895.45	1	908.6
METROPOLIS	1704.8	12	1747.3
ONGC	245.68	1	250.05
PVR	964.05	1	986.75
ULTRACEMCO	11869	10	12155.05

* Trends turned Down after a significant period

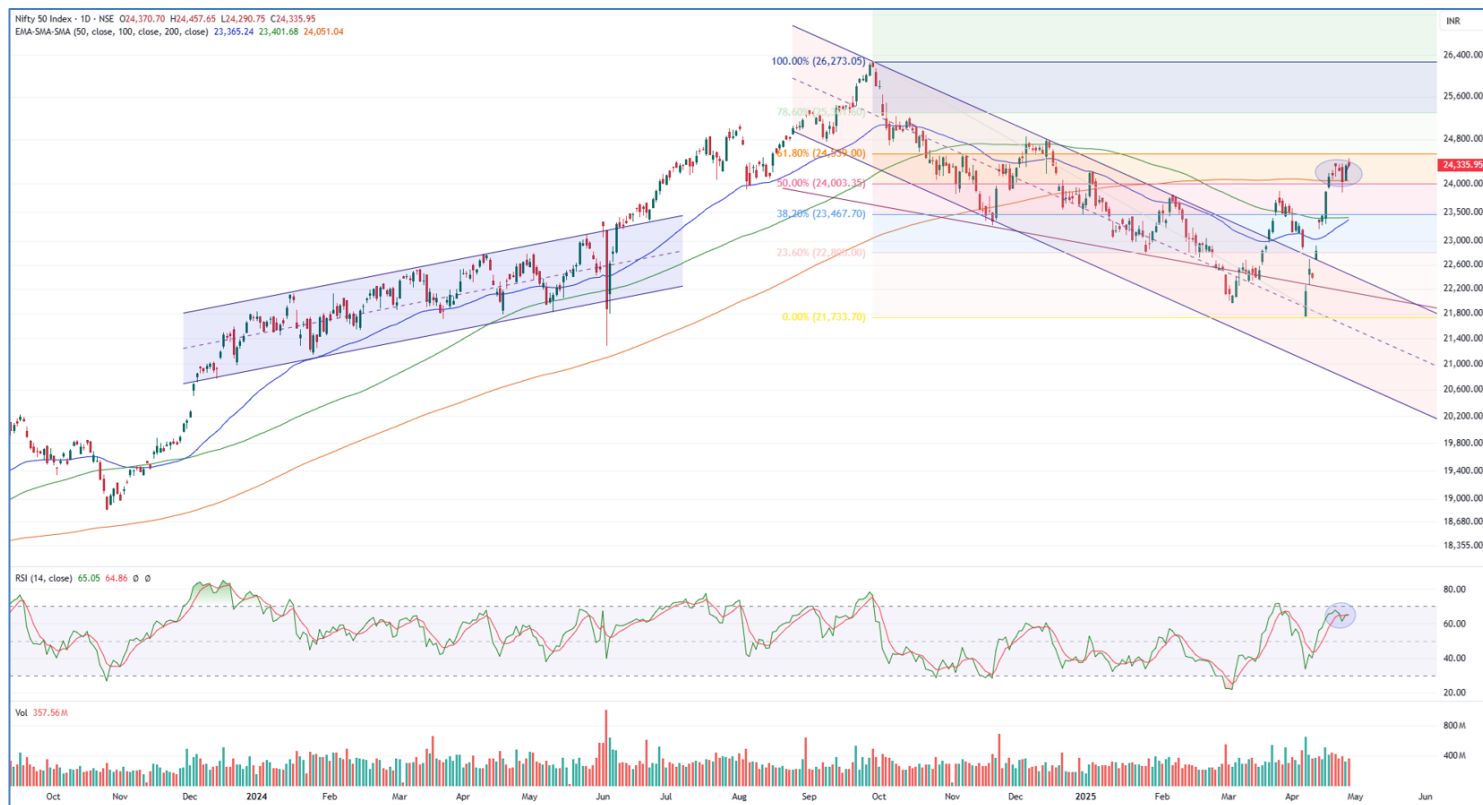
Gainers - Losers (Nifty 500 Stocks)

Gainers			
Company Name	Last Price	% Gain	Volume
Malu Paper	42.24	20	1199564
Paras Defence	1337.8	16.97	8298576
Data Patterns	2556.9	14.34	7853429
Kilitch Drugs	400.9	12.09	339144
Aspinwall	284.77	12.05	93216
Garden Reach Sh	1957.8	11.9	17638151
TBO Tek	1130	11.49	1974702

Losers			
Company Name	Last Price	% Loss	Volume
Inspire Films	25	-11.5	22000
Max India	205.48	-10.5	234914
Global Vectra	200.82	-8.59	79040
Lakshmi Finance	206.68	-7.57	42372
Shiva Mills Lim	73.45	-7.27	101465
Manaksia	66.1	-6.86	205476
Suraj	378.85	-6.58	90820



Nifty Daily chart with RSI indicator



BankNifty Daily chart with RSI indicator



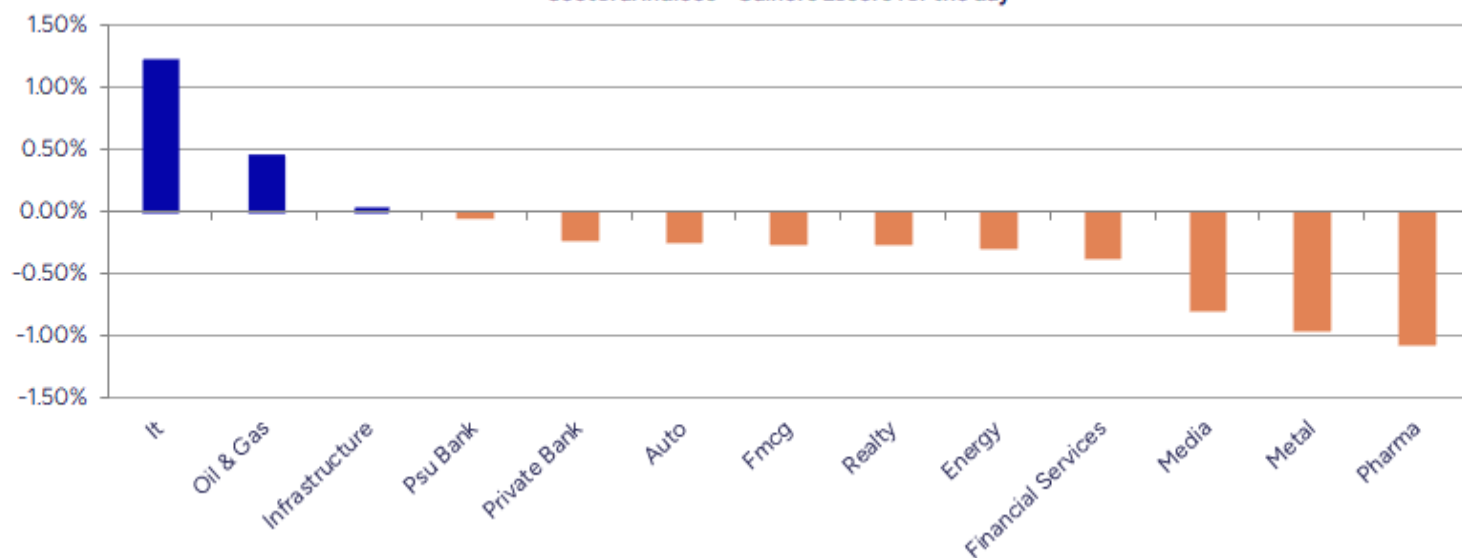
Breakouts - Cross above 200 DMA			
Company Name	LCP	Change %	200 DMA
Data Patterns	2556.9	8.72	2351.79
Ameya Precision	113.4	3.44	109.63
Ashima	32.62	2.51	31.82
Sah Polymers	88.8	2.35	86.76
Manaksia Alumin	28.68	1.70	28.2
Mask Investment	156.16	1.28	154.18
Punjab Chemical	1076.65	1.02	1065.74
SEL Mgf Company	46.45	1.00	45.99
Aegis Logistics	790.75	0.69	785.35
IDFC First Bank	66.93	0.63	66.51
NCL Industries	212.12	0.46	211.15
Samhi Hotels	183.95	0.44	183.15
Reliance Infra	256.7	0.33	255.86
Banaras Beads	120.78	0.20	120.54
Aspinwall	284.77	0.18	284.25
IDBI Bank	83.07	0.16	82.94
Aries Agro	279.7	0.13	279.34
Avadh Sugar	570.65	13.00%	569.91

* Stocks crossing above its Simple Moving Average (200DMA)

Breakdown - Cross below 200 DMA			
Company Name	LCP	Change %	200 DMA
Lakshmi Finance	206.68	-6.67	221.44
Vaidya Sane	131	-2.48	134.33
Orient Electric	233.23	-2.24	238.58
Indraprastha	403.25	-1.78	410.55
Navneet	142	-1.72	144.49
Archean Chem	635.4	-1.50	645.06
AYM Syntex	204.53	-1.50	207.64
Capital SFB	293	-1.00	295.95
Lupin	2067.1	-0.95	2087.01
Suven Life Sci	130.95	-0.76	131.95
Pidilite Ind	3005	-0.55	3021.6
Power Mech	2692.1	-0.47	2704.7
Vasa Denticity	634	-0.38	636.4
Brooks Labs	133.94	-0.36	134.42
DSP Nifty EW	311.69	-0.21	312.34
Axis NiftyHeal	141.91	-0.19	142.18
NHPC	86.52	-0.14	86.64
McLeod	33.99	-0.09	34.02

* Stocks crossing below its Simple Moving Average (200DMA)

Sectoral Indices - Gainers Losers for the day



Stocks witnessing a volume surge as compared to their 5 day average volume

Watch out for the stocks that have seen a huge spurt in its share price over the last three days

Volume Shockers - NSE					
Company name	LCP	% Chg	Volume	Avg Vol *	% Chg
Paras Defence	1337.8	16.97	8298571	74764	11000
Data Patterns	2556.9	14.34	7852814	106334	7285
Premier Explo	467.3	6.57	2566550	77069	3230
Womancart	334.9	-0.46	108800	3520	2991
Kilitch Drugs	400.9	12.09	339144	12389	2637
TBO Tek	1130	11.49	1974702	91233	2064
SML Isuzu	1551.2	-2.81	255186	12295	1976
Garden Reach Sh	1957.8	11.9	17638151	871209	1925
UCO Bank	32.07	4.19	61374763	3241793	1793
Manorama Indust	1362.1	5.26	914397	48536	1784
RPG Life	2174.5	2.77	406629	23456	1634
Sarla Performan	107.6	10.93	2329649	140316	1560
Manaksia Alumin	28.68	8.47	858521	57428	1395
DIC India	713.3	0.21	19058	1351	1311
Laxmi Goldorna	518.95	2.08	15079	1094	1279
Tejas Networks	729.4	-2.47	5951779	434698	1269
Mindteck	220.05	8.59	614289	45376	1254
Jash Engineerin	585.85	-5.32	341117	26774	1174
Sky Gold	312	0.87	329332	25989	1167
Adani Green Ene	922.4	-1.98	6038171	480592	1156

* the Average Volume of last 5 days

Price Shockers - NSE				
Company name	LCP	Prv Close	% Chg	Volume
Paras Defence	1337.8	1045.1	28.01	8298704
Jayaswal Neco	44.1	35.31	24.89	4888243
Malu Paper	42.24	34.76	21.52	1199564
Garden Reach Sh	1957.8	1616.8	21.09	17638621
Premier Explo	467.3	387.05	20.73	2566570
Oriental Trimex	10.99	9.13	20.37	4775483
Cochin Shipyard	1652.4	1415.5	16.74	11867902
Kilitch Drugs	400.9	345.35	16.09	339144
Silly Monks Ent	17.66	15.34	15.12	115136
Manorama Indust	1362.1	1210.7	12.51	914497
Mangalore Chem	229.51	204.4	12.28	1214370
Aspinwall	284.77	253.89	12.16	93216
Sarla Performan	107.6	96.04	12.04	2331178
Whirlpool	1291.5	1156.55	11.67	4621600
AGI Infra	867.45	776.95	11.65	258761
Sonata	376	337.9	11.28	8523448
Phantom Digital	241.15	218.15	10.54	76500
Kalyani Forge	604.15	548	10.25	684
E2E Networks	2422.6	2197.5	10.24	93555
Basilic Fly	377.25	342.2	10.24	178800

* the % price rise of the last 3 days

Nifty 50 stocks - Summary Details											
Symbol	LTP	Chng	% Chng	Volume (lacs)	Turnover (crs.)	52w High	Diff with 52w H	52w Low	Diff with 52w L	365 days % chng	30 days % chng
NIFTY 50	24335.95	7.45	0.03%	3575.62	30436.61	26277.35	7.39%	21281.45	14.35%	3.44%	8.51%
ADANIENT	2330.50	-39.30	-1.66%	6.71	157.87	3743.90	37.75%	2025.00	15.09%	2.33%	-23.07%
ADANIPTS	1216.70	6.80	0.56%	23.82	289.77	1621.40	24.96%	995.65	22.20%	2.28%	-8.66%
APOLLOHOSP	6990.00	-55.00	-0.78%	1.74	122.22	7545.35	7.36%	5693.20	22.78%	6.48%	12.57%
ASIANPAINT	2456.10	3.90	0.16%	12.35	303.39	3394.90	27.65%	2124.75	15.59%	4.77%	-13.78%
AXISBANK	1189.60	-3.20	-0.27%	60.75	725.91	1339.65	11.20%	933.50	27.43%	8.24%	5.53%
BAJAJ-AUTO	8088.50	-7.50	-0.09%	2.28	184.43	12774.00	36.68%	7089.35	14.09%	2.76%	-9.79%
BAJAJFINSV	2063.80	14.10	0.69%	21.20	436.47	2135.00	3.33%	1419.05	45.44%	2.11%	28.32%
BAJFINANCE	9105.00	12.00	0.13%	11.77	1065.84	9660.00	5.75%	6375.70	42.81%	1.65%	35.09%
BEL	317.15	12.10	3.97%	578.83	1828.94	340.50	6.86%	221.00	43.51%	1.24%	27.66%
BHARTIARTL	1827.20	5.40	0.30%	46.84	856.97	1904.30	4.05%	1219.05	49.89%	5.10%	37.39%
CIPLA	1542.00	-13.10	-0.84%	13.85	213.79	1702.05	9.40%	1317.25	17.06%	7.83%	10.36%
COALINDIA	388.70	-8.45	-2.13%	62.74	245.66	543.55	28.49%	349.25	11.30%	-0.26%	-12.87%
DRREDDY	1176.20	-22.50	-1.88%	16.63	196.03	1421.49	17.26%	1020.00	15.31%	4.76%	-80.83%
EICHERMOT	5574.50	-47.50	-0.84%	3.10	172.42	5906.50	5.62%	4253.85	31.05%	5.13%	22.19%
GRASIM	2737.10	-16.30	-0.59%	8.91	243.90	2877.75	4.89%	2171.60	26.04%	5.45%	17.54%
HCLTECH	1570.00	20.70	1.34%	22.31	349.06	2012.20	21.98%	1235.00	27.13%	-2.71%	5.12%
HDFCBANK	1906.00	-14.20	-0.74%	94.59	1806.23	1978.90	3.68%	1426.80	33.59%	5.03%	27.18%
HDFCLIFE	715.00	4.15	0.58%	25.45	181.42	761.20	6.07%	511.40	39.81%	3.67%	20.92%
HEROMOTOCO	3855.10	-56.60	-1.45%	4.29	166.45	6246.25	38.28%	3344.00	15.28%	5.07%	-12.91%
HINDALCO	622.50	-6.15	-0.98%	45.29	282.79	772.65	19.43%	546.45	13.92%	-7.88%	-3.18%
HINDUNILVR	2325.00	6.40	0.28%	18.96	440.49	3035.00	23.39%	2136.00	8.85%	2.65%	4.32%
ICICIBANK	1425.50	-3.30	-0.23%	107.87	1540.92	1438.30	0.89%	1051.05	35.63%	5.97%	28.96%
INDUSINDBK	837.50	6.95	0.84%	87.69	735.80	1550.00	45.97%	606.00	38.20%	27.81%	-42.58%
INFY	1498.00	15.90	1.07%	80.57	1205.18	2006.45	25.34%	1307.00	14.61%	-5.64%	3.63%
ITC	425.35	-3.45	-0.80%	111.90	477.03	528.50	19.52%	390.15	9.02%	4.65%	-2.55%
JIOFIN	257.50	-0.40	-0.16%	124.95	321.90	385.85	33.26%	198.65	29.62%	13.36%	-32.44%
JSWSTEEL	1035.80	-18.60	-1.76%	12.07	126.31	1074.90	3.64%	823.80	25.73%	-0.83%	18.84%
KOTAKBANK	2202.10	-23.50	-1.06%	30.58	678.73	2301.90	4.34%	1543.85	42.64%	2.51%	38.36%
LT	3321.30	-6.00	-0.18%	18.44	615.66	3963.50	16.20%	2965.30	12.01%	-4.72%	-7.71%
M&M	2905.80	-24.80	-0.85%	20.51	599.05	3270.95	11.16%	2001.00	45.22%	9.93%	43.31%
MARUTI	11810.00	-36.00	-0.30%	4.56	538.80	13680.00	13.67%	10725.00	10.12%	2.81%	-6.75%
NESTLEIND	2384.90	-21.10	-0.88%	9.76	232.62	2778.00	14.15%	2110.00	13.03%	6.90%	-3.09%
NTPC	357.90	-3.60	-1.00%	94.73	339.44	448.45	20.19%	292.80	22.23%	1.09%	1.54%
ONGC	245.65	-4.95	-1.98%	80.31	199.12	345.00	28.80%	205.00	19.83%	1.71%	-11.42%
POWERGRID	304.05	-4.50	-1.46%	146.78	445.57	366.25	16.98%	247.30	22.95%	6.27%	5.58%
RELIANCE	1398.90	30.10	2.20%	325.39	4541.67	1608.80	13.05%	1114.85	25.48%	7.35%	-52.88%
SBILIFE	1724.40	-11.70	-0.67%	20.50	356.19	1936.00	10.93%	1307.70	31.87%	12.16%	22.67%
SBIN	810.75	-6.60	-0.81%	112.83	924.08	912.00	11.10%	680.00	19.23%	5.94%	2.00%
SHRIRAMFIN	612.95	-9.05	-1.45%	103.87	641.08	730.45	16.09%	438.60	39.75%	-5.18%	-75.11%
SUNPHARMA	1800.20	-41.40	-2.25%	28.86	524.22	1960.35	8.17%	1377.20	30.71%	6.16%	22.24%
TATACONSUM	1171.00	15.80	1.37%	14.39	167.29	1250.10	6.33%	882.90	32.63%	15.30%	4.77%
TATAMOTORS	667.30	-0.85	-0.13%	137.54	923.03	1179.00	43.40%	535.75	24.55%	-0.93%	-33.15%
TATASTEEL	141.56	-0.51	-0.36%	257.58	365.59	184.60	23.32%	122.62	15.45%	-7.89%	-14.31%
TCS	3473.00	29.50	0.86%	15.78	547.71	4592.25	24.37%	3056.05	13.64%	-4.51%	-9.89%
TECHM	1495.00	33.50	2.29%	26.53	395.24	1807.70	17.30%	1193.65	25.25%	3.05%	14.29%
TITAN	3375.20	6.10	0.18%	5.75	194.43	3867.00	12.72%	2925.00	15.39%	9.98%	-6.02%
TRENT	5510.00	300.50	5.77%	14.21	756.60	8345.00	33.97%	4052.40	35.97%	-2.17%	21.01%
ULTRACEMCO	11850.00	-264.00	-2.18%	5.16	615.47	12339.00	3.96%	9408.05	25.96%	5.25%	24.88%
WIPRO	241.75	1.25	0.52%	166.47	402.38	324.60	25.52%	208.50	15.95%	-8.29%	-48.24%
ETERNAL	231.16	3.95	1.74%	327.62	755.45	304.70	24.14%	146.30	58.00%	#VALUE!	#VALUE!

Disclaimer / Disclosures

ANALYST CERTIFICATION

I, Mrs. Vaishali Parekh B.com, Research Analyst, author and the name subscribed to this report, hereby certify that all of the views expressed in this research report accurately reflect our views about the subject issuer(s) or securities. We also certify that no part of our compensation was, is, or will be directly or indirectly related to the specific recommendation(s) or view(s) in this report.

Terms & conditions and other disclosures:

Prabhudas Lilladher Pvt. Ltd, Mumbai, India (hereinafter referred to as "PL") is engaged in the business of Stock Broking, Portfolio Manager, Depository Participant and distribution for third party financial products. PL is a subsidiary of Prabhudas Lilladher Advisory Services Pvt Ltd. which has its various subsidiaries engaged in business of commodity broking, investment banking, financial services (margin funding) and distribution of third party financial/other products, details in respect of which are available at www.plindia.com

This document has been prepared by the Research Division of PL and is meant for use by the recipient only as information and is not for circulation. This document is not to be reported or copied or made available to others without prior permission of PL. It should not be considered or taken as an offer to sell or a solicitation to buy or sell any security.

The information contained in this report has been obtained from sources that are considered to be reliable. However, PL has not independently verified the accuracy or completeness of the same. Neither PL nor any of its affiliates, its directors or its employees accepts any responsibility of whatsoever nature for the information, statements and opinion given, made available or expressed herein or for any omission therein.

Recipients of this report should be aware that past performance is not necessarily a guide to future performance and value of investments can go down as well. The suitability or otherwise of any investments will depend upon the recipient's particular circumstances and, in case of doubt, advice should be sought from an independent expert/advisor.

Either PL or its affiliates or its directors or its employees or its representatives or its clients or their relatives may have position(s), make market, act as principal or engage in transactions of securities of companies referred to in this report and they may have used the research material prior to publication.

PL may from time to time solicit or perform investment banking or other services for any company mentioned in this document.

PL is registered as Research Analyst under Securities and Exchange Board of India (Research Analysts) Regulations, 2014 PL submits that no material disciplinary action has been taken on us by any Regulatory Authority impacting Equity Research Analysis activities.

PL or its research analysts or its associates or his relatives do not have any financial interest in the subject company.

PL or its research analysts or its associates or his relatives do not have actual/beneficial ownership of one per cent or more securities of the subject company at the end of the month immediately preceding the date of publication of the research report.

PL or its research analysts or its associates or his relatives do not have any material conflict of interest at the time of publication of the research report.

PL or its associates might have received compensation from the subject company in the past twelve months.

PL or its associates might have managed or co-managed public offering of securities for the subject company in the past twelve months or mandated by the subject company for any other assignment in the past twelve months.

PL or its associates might have received any compensation for investment banking or merchant banking or brokerage services from the subject company in the past twelve months.

PL or its associates might have received any compensation for products or services other than investment banking or merchant banking or brokerage services from the subject company in the past twelve months PL or its associates might have received any compensation or other benefits from the subject company or third party in connection with the research report.

PL encourages independence in research report preparation and strives to minimize conflict in preparation of research report. PL or its analysts did not receive any compensation or other benefits from the subject Company or third party in connection with the preparation of the research report. PL or its Research Analysts do not have any material conflict of interest at the time of publication of this report.

It is confirmed that Mrs.Vaishali Parekh B.com, Research Analyst of this report has not received any compensation from the companies mentioned in the report in the preceding twelve months compensation of our Research Analysts is not based on any specific merchant banking, investment banking or brokerage service transactions.

The Research analysts for this report certifies that all of the views expressed in this report accurately reflect his or her personal views about the subject company or companies and its or their securities, and no part of his or her compensation was, is or will be, directly or indirectly related to specific recommendations or views expressed in this report.

The research analysts for this report has not served as an officer, director or employee of the subject company PL or its research analysts have not engaged in market making activity for the subject company

Our sales people, traders, and other professionals or affiliates may provide oral or written market commentary or trading strategies to our clients that reflect opinions that are contrary to the opinions expressed herein, and our proprietary trading and investing businesses may make investment decisions that are inconsistent with the recommendations expressed herein. In reviewing these materials, you should be aware that any or all of the foregoing, among other things, may give rise to real or potential conflicts of interest.

PL and its associates, their directors and employees may (a) from time to time, have a long or short position in, and buy or sell the securities of the subject company or (b) be engaged in any other transaction involving such securities and earn brokerage or other compensation or act as a market maker in the financial instruments of the subject company or act as an advisor or lender/borrower to the subject company or may have any other potential conflict of interests with respect to any recommendation and other related information and opinions.