

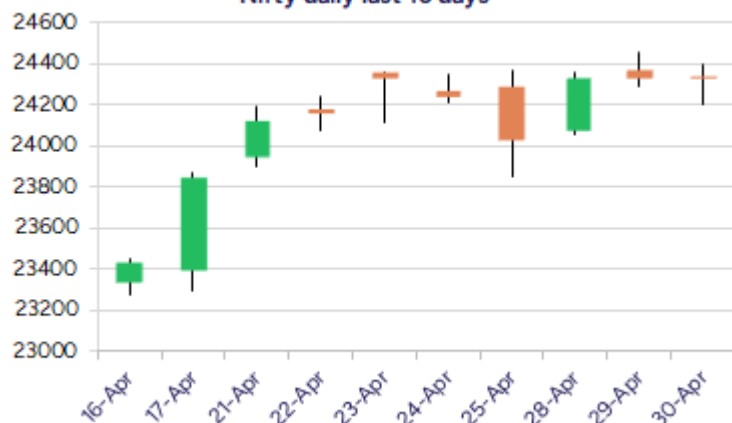
Date: 02nd May 2025

* Sensex 80242.24 -46.14

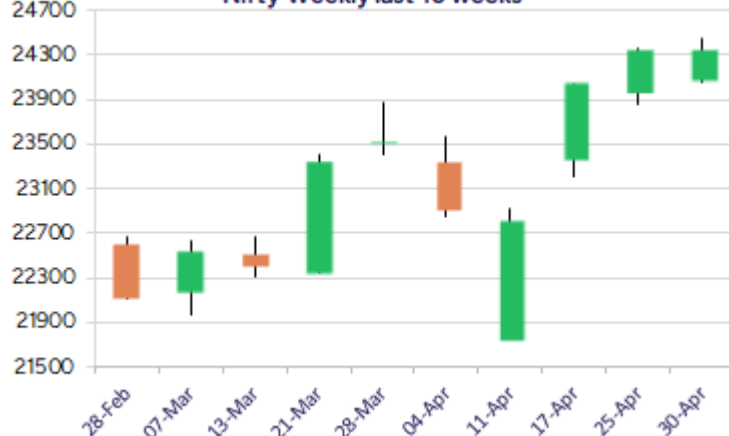
* Nifty 24334.20 -1.75

* Bank Nifty 55087.75 -304.10

Nifty daily last 10 days



Nifty Weekly last 10 weeks



*Blue candle → Close rate > Open rate * Red candle → Close rate < Open rate

Market Preview

Nifty consolidates near the 24300 zone

Nifty witnessed a rangebound session for most past of the trading session to close on a flat note awaiting further developments. BankNifty witnessed some profit booking to shed some gains and closed near the 55100 zone with bias maintained intact. The market breadth turned weak with the advance decline indicating a negative ratio of almost 1:3 at close.

Market Forecast

Nifty daily range 24200-24500

Nifty, remained rangebound throughout the session and with some volatility witnessed closed on a flat note with the index overall consolidating within a narrow band for quite some time. With the sentiment maintained with a cautiously positive approach, the index would need to breach above the 24400 zone decisively having the near-term support near the important 200 period MA at 24050 level which if sustained, can regain with the positive move for further rise in the coming days.

BankNifty, after opening with some fluctuations witnessed gradually slipped down as the day progressed with some profit booking seen and ended near the 55100 zone with overall bias still maintained strong having the important near-term support at 54500 zone which needs to be sustained. The index on the daily chart has indicated a flag pattern, as mentioned earlier and once a decisive breach above 55700 is confirmed, one can expect for another fresh round of momentum in the coming days.

The support for the day is seen at 24200 levels while the resistance is seen at 24500 levels. BankNifty would have the daily range of 54600-55700 levels.

Indices	Period	Closing	% Chng	Trend	Reversal	2 Sup	1 Sup	Pivot	1 Res	2 Res
Nifty	Daily	24334.20	-0.01%	-1	24342.95	24112	24223	24310	24421	24507
	Weekly	24039.35	0.79%	5	22874.25	23570	23805	24085	24319	24600
	Monthly	24334.20	3.46%	-7	24274.15	20798	22566	23512	25279	26225
Bank Nifty	Daily	55087.15	-0.55%	-4	56009.70	54342	54714	55096	55469	55851
	Weekly	54664.05	0.69%	5	51255.25	53066	53865	54981	55780	56896
	Monthly	55087.15	6.83%	1	53311.35	46522	50805	53451	57733	60379
Sensex	Daily	80242.24	-0.06%	-1	80258.70	79569	79906	80216	80552	80862
	Weekly	79212.53	0.84%	6	76429.20	77736	78474	79345	80083	80954
	Monthly	80242.24	3.65%	-7	80009.00	68245	74243	77449	83447	86653

Daily Trend turned up			
Scrip Name	LCP	Curr Trnd	Reversal
APOLLOTYRE	471.9	-3	469.15
CEATLTD	3332	-3	3064.75
CIPLA	1550.1	-1	1547.35
DABUR	487.75	-1	484.3
DLF	674.3	-3	671.35
FORTIS	685.55	-1	668.1
GODREJPROP	2161.5	-1	2112.5
GREAVESCOT	199.57	-3	195.15
ICICIGI	1876.5	-3	1865
JUBLFOOD	715.4	-3	710.85
PAGEIND	45615	-4	45397.7
TATACOMM	1591.4	-3	1587.7

* Trends turned Up after a significant period

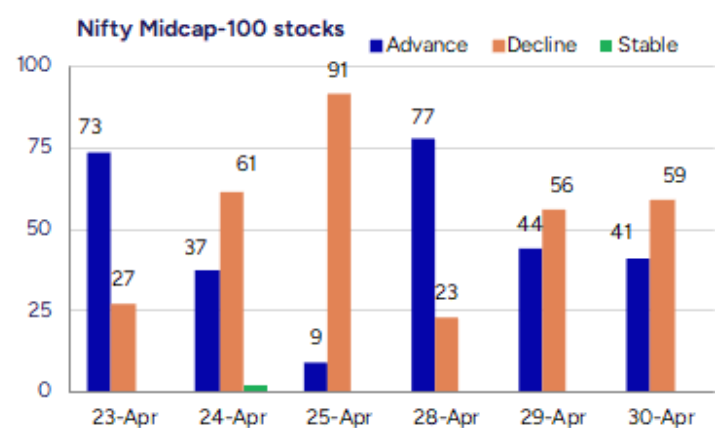
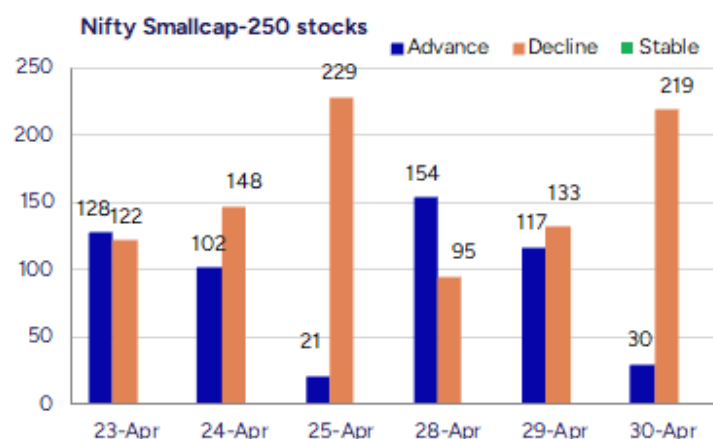
Daily Trend turned Down			
Scrip Name	LCP	Curr Trnd	Reversal
AJANTPHARM	2706.1	2	2750.95
AUBANK	678.6	12	694.35
BHARATFORG	1104.2	2	1116.2
DCBBANK	135.16	2	135.95
FSL	340.7	10	351.25
GLENMARK	1381.2	2	1383.65
MCX	6128	2	6227.4
MPHASIS	2469	10	2497.35
NATIONALUM	156.47	10	158.45
POLYCAB	5520	11	5557.7
TATAMOTORS	644.25	10	656.6
VIPIND	305.95	11	309.4

* Trends turned Down after a significant period

Gainers - Losers (Nifty 500 Stocks)

Gainers			
Company Name	Last Price	% Gain	Volume
Chetana Educati	118.4	19.23	248000
Sonata	421.55	12.11	39990406
A B Infrabuild	88.96	10.61	1994609
Global Vectra	220.9	10	80625
Vishal Mega Mar	118.48	10	106012686
Jet Freight Log	14.77	9.98	961181
Ceat	3332	8.87	2389351

Losers			
Company Name	Last Price	% Loss	Volume
Vilas Transcore	351.2	-11.39	96500
Premier Explo	416.2	-10.94	3693573
Bannari A Spg	30.99	-10.9	333315
DUGLOBAL	52.8	-10.05	67500
Praj Industries	461.3	-9.26	4932979
G-Tec Jainx	25.6	-9.03	25055
Envirotech Sys	112.55	-9.01	241000



Nifty Daily chart with RSI indicator



BankNifty Daily chart with RSI indicator



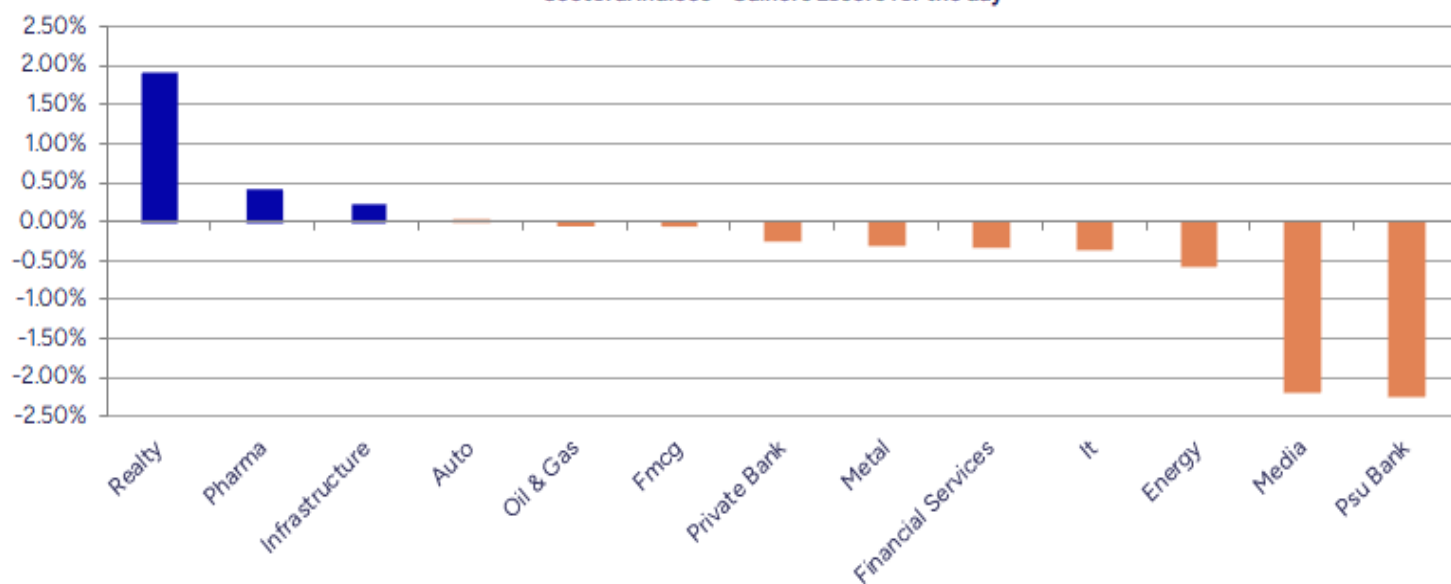
Breakouts - Cross above 200 DMA			
Company Name	LCP	Change %	200 DMA
A B Infrabuild	88.96	5.45	84.36
Malu Paper	44.31	2.74	43.13
Maruti Suzuki	12257	2.31	11980.45
Kingfa Science	3137.2	1.92	3078.2
Steel City Secu	102.22	1.75	100.46
Oriental Trimex	11.4	1.33	11.25
LIC ETF	902.2	1.25	891.1
Basilic Fly	396.1	1.22	391.31
Ducol Organics	126.9	0.93	125.73
Pidilite Ind	3033.9	0.42	3021.28
Axis NiftyHeal	142.76	0.37	142.24
Ipru Nifty Hea	143.45	0.34	142.96
Lupin	2095.6	0.34	2088.45
Nipp InfraBeES	904.7	0.21	902.78
Karur Vysya	218.17	0.12	217.9

* Stocks crossing above its Simple Moving Average (200DMA)

Breakdown - Cross below 200 DMA			
Company Name	LCP	Change %	200 DMA
PTC Industries	12794	-4.47	13393.13
Ashima	30.47	-4.06	31.76
SEL Mgf Company	44.12	-3.94	45.93
Refex Ind	406.4	-3.88	422.81
Naga Dhunseri	3919.4	-3.86	4076.93
Five-Star Busin	705.95	-3.78	733.71
IDBI Bank	79.83	-3.74	82.93
Indo Tech Trans	2274.6	-3.64	2360.44
NAVA	454.95	-3.49	471.42
FIEM Ind	1435.2	-3.27	1483.65
Manaksia Alumin	27.36	-2.94	28.19
Avadh Sugar	553.05	-2.90	569.57
GMRP&UI	113.46	-2.56	116.44
IDFC First Bank	64.89	-2.35	66.45
JK Lakshmi Cem	776.95	-2.34	795.54
Presstonic	107.35	-2.34	109.92
Vardhman Poly	10.94	-2.32	11.2
Ramco System	377.15	-2.32	386.1

* Stocks crossing below its Simple Moving Average (200DMA)

Sectoral Indices - Gainers Losers for the day



Stocks witnessing a volume surge as compared to their 5 day average volume

Watch out for the stocks that have seen a huge spurt in its share price over the last three days

Volume Shockers - NSE					
Company name	LCP	% Chg	Volume	Avg Vol *	% Chg
Paras Defence	1359.55	1.63	11012308	74764	14630
A B Infrabuild	88.96	10.61	1994609	15200	13022
Punjab Chemical	1112.5	3.33	604518	8140	7326
SecMark Consult	131.39	3.27	137856	2849	4739
Premier Explo	416.2	-10.94	3693573	77069	4693
Go Fashion	785.9	7.28	2205268	49266	4376
Diamond Power	94.37	-2.4	227338	6800	3243
Data Patterns	2486.6	-2.75	2986907	106334	2709
BEW Engineering	196.85	-1.99	30000	1125	2567
R R Kabel	1044.7	6.36	2580389	110125	2243
Laxmi Goldorna	522.05	0.6	22593	1094	1966
Kilitch Drugs	402.65	0.44	244331	12389	1872
Schaeffler Ind	3472.9	5.79	1343169	81215	1554
Varun Beverages	522.35	-1.29	22670381	1424186	1492
IGL	192.59	4.08	22316614	1436035	1454
Sonata	421.55	12.11	39990406	2769349	1344
Jash Engineerin	564.45	-3.65	380929	26774	1323
Jai Balaji Ind	119.2	-0.84	720731	54390	1225
Ceat	3332	8.87	2389351	186244	1183
Malu Paper	44.31	4.9	2278363	185927	1125

* the Average Volume of last 5 days

Price Shockers - NSE				
Company name	LCP	Prv Close	% Chg	Volume
Paras Defence	1359.55	1045.1	30.09	11014859
Malu Paper	44.31	34.76	27.47	2278363
Oriental Trimex	11.4	9.13	24.86	5285451
Sonata	421.55	337.9	24.76	39991084
Silly Monks Ent	18.72	15.34	22.03	302585
Garden Reach Sh	1917	1616.8	18.57	8792259
Prime Focus	112.95	96.38	17.19	198152
Kilitch Drugs	402.65	345.35	16.59	244431
Chetana Educati	118.4	101.65	16.48	248000
Jayaswal Neco	41.09	35.31	16.37	827572
Jet Freight Log	14.77	12.7	16.3	961181
Kalyani Forge	634.35	548	15.76	4293
Basilic Fly	396.1	342.2	15.75	231600
Shradha Infra	69.65	60.4	15.31	25350
Astron Paper	14.91	13.05	14.25	32039
E Factor Experi	163.2	143.45	13.77	47200
Sical Logistics	116.54	102.53	13.66	29420
Cochin Shipyard	1591.4	1415.5	12.43	5602627
Phantom Digital	243.7	218.15	11.71	46500
AGI Infra	865.6	776.95	11.41	97442

* the % price rise of the last 3 days

Nifty 50 stocks - Summary Details											
Symbol	LTP	Chng	% Chng	Volume (lacs)	Turnover (crs.)	52w High	Diff with 52w H	52w Low	Diff with 52w L	365 days % chng	30 days % chng
NIFTY 50	24334.20	-1.75	-0.01%	4244.50	41072.98	26277.35	7.39%	21281.45	14.34%	3.47%	7.47%
ADANIENT	2290.00	-40.60	-1.74%	8.37	193.76	3743.90	38.83%	2025.00	13.09%	0.64%	-24.36%
ADANIPTS	1215.80	-0.60	-0.05%	18.24	222.36	1621.40	25.02%	995.65	22.11%	2.83%	-7.66%
APOLLOHOSP	6970.00	-22.50	-0.32%	5.00	348.79	7545.35	7.63%	5693.20	22.43%	5.69%	17.16%
ASIANPAINT	2416.50	-34.60	-1.41%	14.80	359.89	3394.90	28.82%	2124.75	13.73%	4.72%	-14.54%
AXISBANK	1183.50	-3.80	-0.32%	62.88	745.89	1339.65	11.66%	933.50	26.78%	7.74%	2.42%
BAJAJ-AUTO	8015.00	-63.50	-0.79%	4.47	358.32	12774.00	37.26%	7089.35	13.06%	2.53%	-7.78%
BAJAJFINSV	1951.00	-115.90	-5.61%	46.83	911.32	2135.00	8.62%	1419.05	37.49%	2.97%	29.53%
BAJFINANCE	8613.50	-479.50	-5.27%	39.69	3430.84	9660.00	10.83%	6375.70	35.10%	1.65%	33.20%
BEL	312.95	-4.15	-1.31%	248.63	784.07	340.50	8.09%	221.00	41.61%	5.24%	34.71%
BHARTIARTL	1854.80	31.00	1.70%	91.40	1695.11	1904.30	2.60%	1219.05	52.15%	5.22%	36.88%
CIPLA	1550.00	8.50	0.55%	23.15	359.72	1702.05	8.93%	1317.25	17.67%	6.89%	9.48%
COALINDIA	384.10	-5.00	-1.29%	45.59	176.20	543.55	29.33%	349.25	9.98%	-2.29%	-14.15%
DRREDDY	1179.50	3.50	0.30%	16.04	190.21	1421.49	17.02%	1020.00	15.64%	2.78%	-81.32%
EICHERMOT	5573.50	-5.50	-0.10%	5.10	283.38	5906.50	5.64%	4253.85	31.02%	4.33%	22.03%
GRASIM	2722.10	-23.60	-0.86%	6.62	181.46	2877.75	5.41%	2171.60	25.35%	5.15%	15.05%
HCLTECH	1556.50	-12.50	-0.80%	36.82	578.08	2012.20	22.65%	1235.00	26.03%	-1.48%	13.09%
HDFCBANK	1920.10	11.30	0.59%	159.68	3073.94	1978.90	2.97%	1426.80	34.57%	4.41%	24.80%
HDFCLIFE	745.00	29.95	4.19%	87.33	644.89	761.20	2.13%	511.40	45.68%	4.28%	24.33%
HEROMOTOCO	3836.00	-16.70	-0.43%	8.92	341.41	6246.25	38.59%	3344.00	14.71%	3.49%	-13.57%
HINDALCO	620.55	-2.00	-0.32%	59.05	369.65	772.65	19.69%	546.45	13.56%	-8.78%	-4.23%
HINDUNILVR	2335.50	13.80	0.59%	20.84	488.06	3035.00	23.05%	2136.00	9.34%	2.78%	4.29%
ICICIBANK	1424.30	-5.50	-0.38%	141.92	2026.49	1438.30	0.97%	1051.05	35.51%	6.04%	23.24%
INDUSINDBK	833.00	-3.95	-0.47%	202.42	1671.65	1550.00	46.26%	606.00	37.46%	28.79%	-43.72%
INFY	1491.50	-6.00	-0.40%	77.04	1155.57	2006.45	25.66%	1307.00	14.12%	-4.66%	4.37%
ITC	425.00	-1.00	-0.23%	100.27	427.85	528.50	19.58%	390.15	8.93%	3.97%	-2.78%
JIOFIN	259.08	1.45	0.56%	320.58	833.93	385.85	32.85%	198.65	30.42%	13.24%	-32.29%
JSWSTEEL	1025.10	-10.50	-1.01%	17.55	180.98	1074.90	4.63%	823.80	24.44%	-2.60%	15.61%
KOTAKBANK	2202.00	-3.00	-0.14%	46.23	1023.13	2301.90	4.34%	1543.85	42.63%	1.56%	34.42%
LT	3330.00	7.70	0.23%	19.31	645.14	3963.50	15.98%	2965.30	12.30%	-4.87%	-8.58%
M&M	2919.50	9.90	0.34%	26.90	787.31	3270.95	10.74%	2001.00	45.90%	9.15%	41.10%
MARUTI	12218.00	377.00	3.18%	9.67	1175.59	13680.00	10.69%	10725.00	13.92%	2.77%	-6.69%
NESTLEIND	2380.00	-7.50	-0.31%	10.20	243.98	2778.00	14.33%	2110.00	12.80%	6.08%	-4.87%
NTPC	353.70	-3.25	-0.91%	167.39	596.18	448.45	21.13%	292.80	20.80%	-0.18%	-1.67%
ONGC	243.42	-2.26	-0.92%	98.22	240.16	345.00	29.44%	205.00	18.74%	-0.28%	-13.25%
POWERGRID	305.20	2.25	0.74%	176.20	542.33	366.25	16.67%	247.30	23.41%	4.34%	3.15%
RELIANCE	1395.00	-4.70	-0.34%	254.81	3579.71	1608.80	13.29%	1114.85	25.13%	9.77%	-52.23%
SBILIFE	1761.30	31.20	1.80%	20.32	357.25	1936.00	9.02%	1307.70	34.69%	11.77%	21.64%
SBIN	787.60	-24.95	-3.07%	256.36	2028.14	912.00	13.64%	680.00	15.82%	5.32%	-1.69%
SHRIRAMFIN	609.00	-5.70	-0.93%	73.74	452.02	730.45	16.63%	438.60	38.85%	-6.30%	-75.34%
SUNPHARMA	1821.60	16.10	0.89%	26.67	488.16	1960.35	7.08%	1377.20	32.27%	4.08%	18.66%
TATACONSUM	1160.00	-8.90	-0.76%	14.77	172.37	1250.10	7.21%	882.90	31.39%	16.67%	6.41%
TATAMOTORS	643.50	-22.10	-3.32%	194.86	1258.00	1179.00	45.42%	535.75	20.11%	-1.31%	-33.48%
TATASTEEL	139.56	-1.94	-1.37%	292.05	410.71	184.60	24.40%	122.62	13.82%	-8.26%	-15.47%
TCS	3431.80	-40.70	-1.17%	28.09	973.16	4592.25	25.27%	3056.05	12.30%	-3.71%	-10.28%
TECHM	1498.00	2.70	0.18%	18.58	279.00	1807.70	17.13%	1193.65	25.50%	5.43%	16.07%
TITAN	3356.30	-22.30	-0.66%	7.09	240.03	3867.00	13.21%	2925.00	14.75%	10.29%	-6.28%
TRENT	5135.00	-256.50	-4.76%	27.10	1408.24	8345.00	38.47%	4052.40	26.72%	1.25%	24.97%
ULTRACEMCO	11635.00	-234.00	-1.97%	6.30	736.95	12339.00	5.71%	9408.05	23.67%	3.12%	19.11%
WIPRO	240.80	-0.60	-0.25%	142.06	342.58	324.60	25.82%	208.50	15.49%	-7.95%	-47.86%
ETERNAL	231.43	0.32	0.14%	458.32	1058.99	304.70	24.05%	146.30	58.19%	#VALUE!	#VALUE!

Disclaimer / Disclosures

ANALYST CERTIFICATION

I, Mrs. Vaishali Parekh B.com, Research Analyst, author and the name subscribed to this report, hereby certify that all of the views expressed in this research report accurately reflect our views about the subject issuer(s) or securities. We also certify that no part of our compensation was, is, or will be directly or indirectly related to the specific recommendation(s) or view(s) in this report.

Terms & conditions and other disclosures:

Prabhudas Lilladher Pvt. Ltd, Mumbai, India (hereinafter referred to as "PL") is engaged in the business of Stock Broking, Portfolio Manager, Depository Participant and distribution for third party financial products. PL is a subsidiary of Prabhudas Lilladher Advisory Services Pvt Ltd. which has its various subsidiaries engaged in business of commodity broking, investment banking, financial services (margin funding) and distribution of third party financial/other products, details in respect of which are available at www.plindia.com

This document has been prepared by the Research Division of PL and is meant for use by the recipient only as information and is not for circulation. This document is not to be reported or copied or made available to others without prior permission of PL. It should not be considered or taken as an offer to sell or a solicitation to buy or sell any security.

The information contained in this report has been obtained from sources that are considered to be reliable. However, PL has not independently verified the accuracy or completeness of the same. Neither PL nor any of its affiliates, its directors or its employees accepts any responsibility of whatsoever nature for the information, statements and opinion given, made available or expressed herein or for any omission therein.

Recipients of this report should be aware that past performance is not necessarily a guide to future performance and value of investments can go down as well. The suitability or otherwise of any investments will depend upon the recipient's particular circumstances and, in case of doubt, advice should be sought from an independent expert/advisor.

Either PL or its affiliates or its directors or its employees or its representatives or its clients or their relatives may have position(s), make market, act as principal or engage in transactions of securities of companies referred to in this report and they may have used the research material prior to publication.

PL may from time to time solicit or perform investment banking or other services for any company mentioned in this document.

PL is registered as Research Analyst under Securities and Exchange Board of India (Research Analysts) Regulations, 2014 PL submits that no material disciplinary action has been taken on us by any Regulatory Authority impacting Equity Research Analysis activities.

PL or its research analysts or its associates or his relatives do not have any financial interest in the subject company.

PL or its research analysts or its associates or his relatives do not have actual/beneficial ownership of one per cent or more securities of the subject company at the end of the month immediately preceding the date of publication of the research report.

PL or its research analysts or its associates or his relatives do not have any material conflict of interest at the time of publication of the research report.

PL or its associates might have received compensation from the subject company in the past twelve months.

PL or its associates might have managed or co-managed public offering of securities for the subject company in the past twelve months or mandated by the subject company for any other assignment in the past twelve months.

PL or its associates might have received any compensation for investment banking or merchant banking or brokerage services from the subject company in the past twelve months.

PL or its associates might have received any compensation for products or services other than investment banking or merchant banking or brokerage services from the subject company in the past twelve months PL or its associates might have received any compensation or other benefits from the subject company or third party in connection with the research report.

PL encourages independence in research report preparation and strives to minimize conflict in preparation of research report. PL or its analysts did not receive any compensation or other benefits from the subject Company or third party in connection with the preparation of the research report. PL or its Research Analysts do not have any material conflict of interest at the time of publication of this report.

It is confirmed that Mrs.Vaishali Parekh B.com, Research Analyst of this report has not received any compensation from the companies mentioned in the report in the preceding twelve months compensation of our Research Analysts is not based on any specific merchant banking, investment banking or brokerage service transactions.

The Research analysts for this report certifies that all of the views expressed in this report accurately reflect his or her personal views about the subject company or companies and its or their securities, and no part of his or her compensation was, is or will be, directly or indirectly related to specific recommendations or views expressed in this report.

The research analysts for this report has not served as an officer, director or employee of the subject company PL or its research analysts have not engaged in market making activity for the subject company

Our sales people, traders, and other professionals or affiliates may provide oral or written market commentary or trading strategies to our clients that reflect opinions that are contrary to the opinions expressed herein, and our proprietary trading and investing businesses may make investment decisions that are inconsistent with the recommendations expressed herein. In reviewing these materials, you should be aware that any or all of the foregoing, among other things, may give rise to real or potential conflicts of interest.

PL and its associates, their directors and employees may (a) from time to time, have a long or short position in, and buy or sell the securities of the subject company or (b) be engaged in any other transaction involving such securities and earn brokerage or other compensation or act as a market maker in the financial instruments of the subject company or act as an advisor or lender/borrower to the subject company or may have any other potential conflict of interests with respect to any recommendation and other related information and opinions.