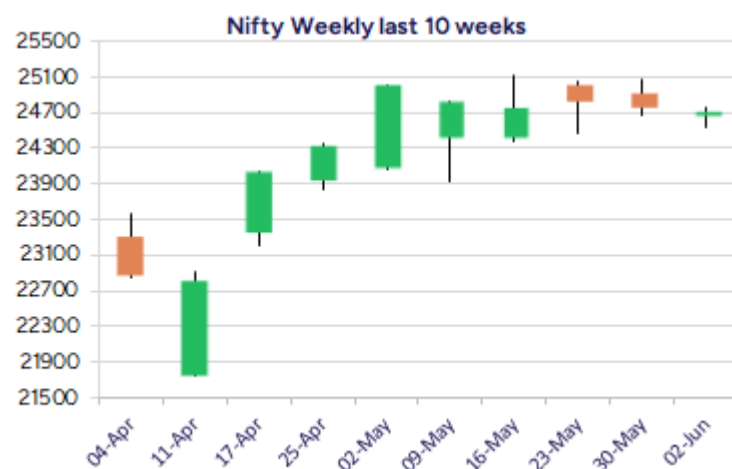
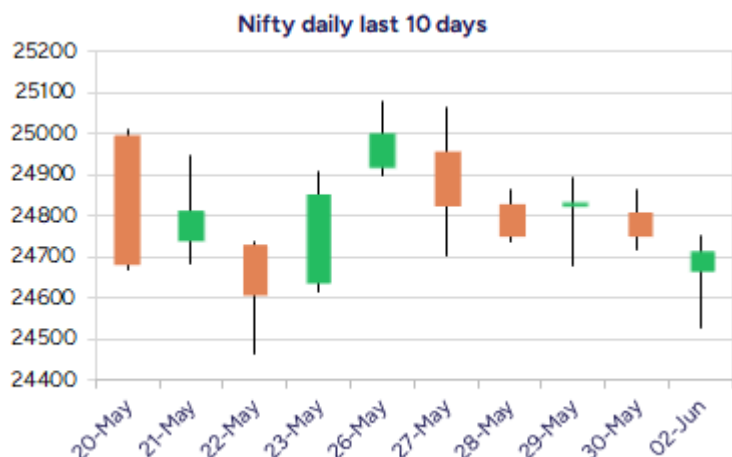


Date: 03 June 2025

* Sensex 81373.75 -77.26

* Nifty 24716.60 -34.10

* Bank Nifty 55903.40 +153.70



*Blue candle → Close rate > Open rate * Red candle → Close rate < Open rate

Market Preview

Nifty ends flat amid high volatility

Nifty recovered strongly after the weak morning session, to erase the losses and closed on a flat note to indicate strength and has maintained the overall bias intact. BankNifty has indicated a strong buying interest with the optimistic close above the 55800 level which was acting as a crucial hurdle for quite some time. The market breadth was overall positive with the advance decline indicating a ratio of 4:3 at close.

Market Forecast

Nifty daily range 24600-24900

Nifty after witnessing a huge gap down opening in the morning session, recovered significantly as the day progressed and closed on a flat note with overall bias sustained and as mentioned earlier, a decisive breach above the 25000 zone shall confirm a breakout with upside targets of 25500 and 26300 levels achievable in the coming days. At the same time, on the downside 24500 zone is positioned as the important and strong support level which needs to be sustained to maintain the overall bias intact.

BankNifty, after a long period of rangebound session has indicated a breakout closing wise above the tough resistance hurdle of 55800 zone to strengthen the trend and can anticipate for further rise in the coming days and can trigger for fresh upside targets of 57700 and 60300 levels. The near-term support shall be maintained near the 54500 zone as mentioned earlier, which needs to be sustained as of now.

The support for the day is seen at 24600 levels while the resistance is seen at 24900 levels. BankNifty would have the daily range of 55600-56600 levels.

Indices	Period	Closing	% Chng	Trend	Reversal	2 Sup	1 Sup	Pivot	1 Res	2 Res
Nifty	Daily	24716.60	-0.14%	-5	24856.45	24437	24577	24666	24805	24894
	Weekly	24750.70	-0.41%	11	24617.50	24438	24595	24837	24993	25235
	Monthly	24750.70	1.71%	1	24390.40	23422	24086	24600	25265	25779
Bank Nifty	Daily	55903.40	0.28%	4	55718.70	55191	55547	55757	56113	56323
	Weekly	55749.70	0.63%	3	55559.45	54724	55237	55555	56068	56386
	Monthly	55749.70	1.20%	2	53879.10	52648	54199	55036	56587	57424
Sensex	Daily	81373.75	-0.09%	-5	81697.90	80347	80861	81167	81681	81987
	Weekly	81451.01	-0.33%	11	81091.35	80302	80876	81684	82259	83067
	Monthly	81451.01	1.51%	1	80320.40	77296	79374	81046	83123	84796

Daily Trend turned Up			
Scrip Name	LCP	Curr Trnd	Reversal
AUBANK	718.65	-2	705.85
CUB	198.64	-4	195.7
FEDERALBNK	206.25	-3	202.35
GODREJCP	1266.1	-9	1263.15
L&TFH	175	-9	173.85
M&M	3025.9	-9	3022.65
MCDOWELLCOM	1549.2	-5	1542.7
PRAJINDLTD	488.1	-3	485.65
RAMCOCEM	986.95	-5	979.15
REPCOHOME	403.45	-8	391.9
SRF	2898.9	-7	2881.2
UBL	2014	-2	2003.45

* Trends turned Up after a significant period

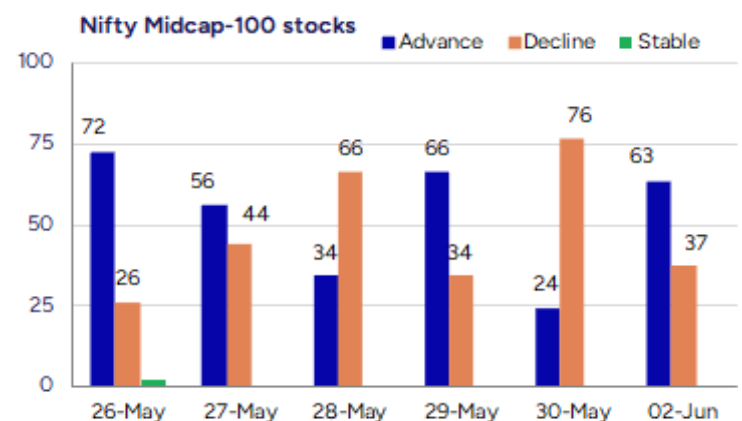
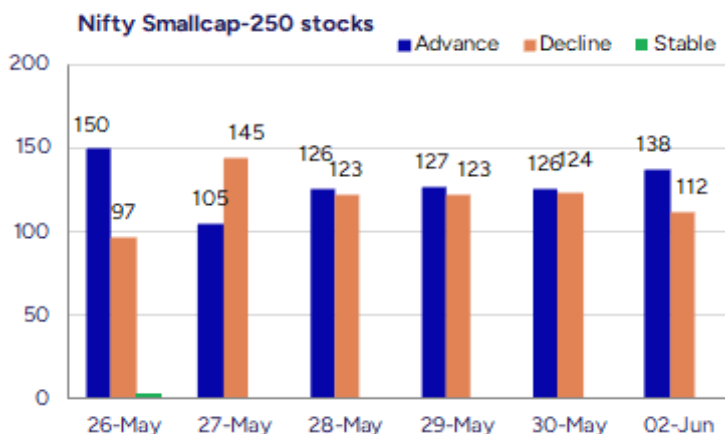
Daily Trend turned Down			
Scrip Name	LCP	Curr Trnd	Reversal
APLLTD	996	2	1006.15
BERGEPAINT	556.9	2	560
BIOCON	334	2	334.2
HINDZINC	453.15	8	456.15
MARICO	704.35	5	714.35
MOTHERSUMI	150.94	2	151.7
MPHASIS	2491.1	2	2552.55
ORACLEFIN	8396.5	3	8443.4
SBILIFE	1802.5	6	1815.1
THYROCARE	1010.6	5	1035.75
VOLTAS	1246	2	1260.75
ZEETELE	127.95	3	129.45

* Trends turned Down after a significant period

Gainers - Losers (Nifty 500 Stocks)

Gainers			
Company Name	Last Price	% Gain	Volume
Signet Ind	75.03	19.99	1102381
Mangalam Alloys	48.35	19.98	385600
NRB Industrial	30.98	19.98	465459
AstraZeneca	9336.5	17.12	1429674
IFB Agro	823.35	17.12	282357
Omaxe	99.47	16.72	1015432
Saakshi Medtech	159.85	14.88	279600

Losers			
Company Name	Last Price	% Loss	Volume
Ujaas Energy	284.15	-37.5	508
Trom Industries	140.05	-19.99	33600
Emkay Taps	299.8	-18.01	57750
Deem Roll Tech	54.95	-15.59	145000
Somi Conveyor	160.48	-14.41	307199
Identical Brain	43.95	-13.57	110000
Marvel Decor Lt	91.5	-12.86	9000



Nifty Daily chart with RSI indicator



BankNifty Daily chart with RSI indicator

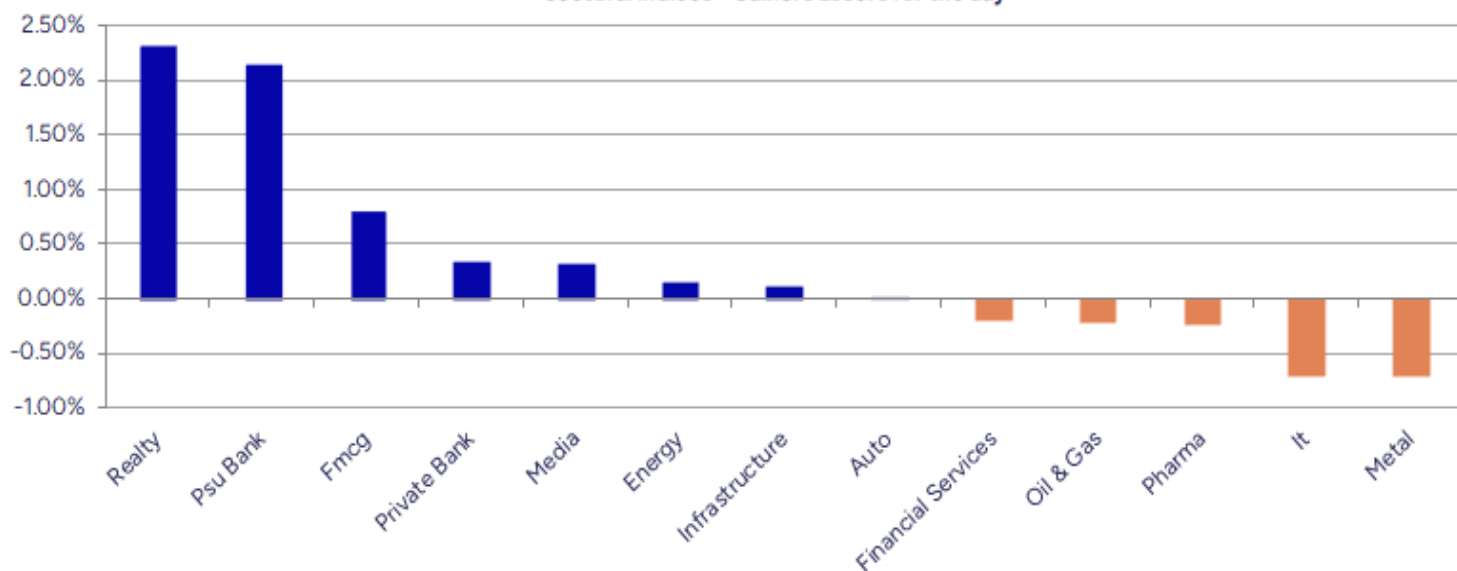


Breakouts - Cross above 200 DMA				Breakdown - Cross below 200 DMA			
Company Name	LCP	Change %	200 DMA	Company Name	LCP	Change %	200 DMA
Signet Ind	75.03	18.33	63.41	Somi Conveyor	160.48	-9.00	176.35
NRB Industrial	30.98	11.60	27.76	Parsvnath	19.36	-6.02	20.6
Aarti Drugs	468.95	5.31	445.29	Mask Investment	156.11	-4.87	164.1
Delta	91.64	5.27	87.05	Reliance Chemo	190.92	-3.81	198.48
Viviana Power	908.5	4.92	865.91	Pokarna	1039.9	-3.80	1080.94
Indo Borax	196.48	4.78	187.52	Ahluwalia	937.35	-3.55	971.88
Nitin Spinners	407.45	3.97	391.89	Greenlam Ind	254.9	-3.12	263.11
Thomas Scott	327.6	3.79	315.65	Banaras Beads	119.42	-2.79	122.85
MTNL	50.81	3.36	49.16	Inox Wind	185.37	-2.30	189.73
Suryoday Small	147.62	3.35	142.84	Marksans Pharma	255.15	-1.75	259.7
Jubilant Ing.	734.05	3.24	711.01	Medico Remedies	53.33	-1.73	54.27
Avantel	151.43	3.10	146.88	Kamat Hotels	231.73	-1.63	235.58
Nagreeka Cap	31.15	2.94	30.26	Reliable Data S	76.43	-1.36	77.48
Honda India PP	3013.4	2.92	2927.95	Tega Industries	1596.2	-1.25	1616.48
Anand Rathi	1968.4	2.85	1913.85	Presstonic	108.05	-1.22	109.38
KFin Tech	1124.4	2.83	1093.44	Persistent	5519	-1.21	5586.63
Brigade Ent	1176.3	2.78	1144.53	Assoc Alcohol	1064.5	-1.14	1076.81
Sagardeep Alloy	29.78	2.65	29.01	Indus Infra Tru	110.32	-1.08	111.53

* Stocks crossing above its Simple Moving Average (200DMA)

* Stocks crossing below its Simple Moving Average (200DMA)

Sectoral Indices - Gainers Losers for the day



Stocks witnessing a volume surge as compared to their 5 day average volume

Watch out for the stocks that have seen a huge spurt in its share price over the last three days

Volume Shockers - NSE					
Company name	LCP	% Chg	Volume	Avg Vol *	% Chg
AstraZeneca	9401.5	17.93	1314469	7428	17597
Diamond Power	109.78	-3.2	743224	6800	10829
Somi Conveyor	158.75	-15.33	297639	5503	5308
GE Power India	285	11.8	3273449	64435	4980
Lumax Auto Tech	904	11.39	3179211	67087	4639
BEW Engineering	164.15	-2.41	51500	1125	4478
Laxmi Goldorna	571.5	3.05	44967	1094	4011
Thomas Scott	328	4.78	164206	4062	3942
IFB Agro	824	17.21	252106	6446	3811
Fairchem Org.	967.8	13.98	547864	14306	3730
Emkay Taps	303	-17.13	54300	1560	3381
Madhya Bharat A	359.45	5.89	861869	28386	2936
Signet Ind	75.03	19.99	1101741	37516	2837
Balaxi Pharma	52.54	5.1	1069195	38449	2681
Saakshi Medtech	159.1	14.34	265200	11880	2132
TT	15.65	6.46	1160991	56021	1972
UCO Bank	34.22	3.54	60732172	3241793	1773
IOB	42.02	5.47	86781695	4686416	1752
Sterling Wilson	305.4	8.14	10662503	581779	1733
Sky Gold	394	0.1	468891	25989	1704

* the Average Volume of last 5 days

Price Shockers - NSE				
Company name	LCP	Prv Close	% Chg	Volume
Mangalam Alloys	48.35	33.35	44.98	385600
IFB Agro	823.35	594.3	38.54	282357
Lumax Auto Tech	898.65	663.95	35.35	3385383
Eurotex	17.32	13.02	33.03	40710
Signet Ind	75.03	59.64	25.8	1102381
Federal-Mogul	468.95	380.65	23.2	475207
Reliance Power	61.97	50.43	22.88	464182705
Veto Switch	132.24	109.69	20.56	214107
Lords Chloro	168.05	140.15	19.91	460900
Sameera Agro	94.7	79.6	18.97	134400
Manugraph Ind	22.73	19.13	18.82	477827
AstraZeneca	9336.5	7884.5	18.42	1429674
Sun Pharma Adv	198.54	169.82	16.91	6170324
TT	15.63	13.39	16.73	1255224
Fiberweb India	55.09	47.25	16.59	345790
NRB Industrial	30.98	26.64	16.29	465459
BLACK BOX	549.95	473.95	16.04	1123687
Venus Remedies	459.4	396.45	15.88	492870
TIL	385.7	333.2	15.76	68898
Reliance Infra	356.85	308.3	15.75	27488581

* the % price rise of the last 3 days

Symbol	LTP	Chng	% Chng	Volume (lacs)	Turnover (crs.)	52w High	Diff with 52w H	52w Low	Diff with 52w L	365 days % chng	30 days % chng
NIFTY 50	24716.60	-34.10	-0.14%	3110.73	25089.12	26277.35	5.94%	21743.65	13.67%	1.66%	9.85%
ADANIENT	2524.70	4.80	0.19%	10.09	255.69	3743.90	32.56%	2025.00	24.68%	9.84%	-26.13%
ADANIPTS	1464.30	31.50	2.20%	31.65	463.54	1621.40	9.69%	995.65	47.07%	13.08%	-0.32%
APOLLOHOSP	6900.00	19.50	0.28%	12.18	851.54	7545.35	8.55%	5693.20	21.20%	-1.06%	17.83%
ASIANPAINT	2268.50	9.40	0.42%	7.03	159.20	3394.90	33.18%	2124.75	6.77%	-6.25%	-21.59%
AXISBANK	1193.00	0.80	0.07%	37.62	448.82	1339.65	10.95%	933.50	27.80%	0.85%	2.59%
BAJAJ-AUTO	8500.50	-106.50	-1.24%	4.57	387.73	12774.00	33.45%	7089.35	19.91%	9.83%	-5.26%
BAJAJFINSV	2026.20	8.80	0.44%	13.39	269.72	2135.00	5.10%	1419.05	42.79%	3.03%	31.98%
BAJFINANCE	9119.00	-61.50	-0.67%	6.62	603.34	9660.00	5.60%	6375.70	43.03%	3.59%	37.07%
BEL	387.80	3.20	0.83%	119.42	462.26	393.50	1.45%	230.00	68.61%	23.53%	29.95%
BHARTIARTL	1850.00	-6.20	-0.33%	31.99	591.53	1917.00	3.50%	1219.05	51.76%	0.23%	35.22%
CIPLA	1467.50	1.80	0.12%	9.63	141.28	1702.05	13.78%	1335.00	9.93%	-3.93%	1.28%
COALINDIA	399.20	1.90	0.48%	61.18	244.43	543.55	26.56%	349.25	14.30%	3.36%	-19.12%
DRREDDY	1249.50	-1.70	-0.14%	11.40	141.85	1421.49	12.10%	1020.00	22.50%	5.77%	-78.40%
EICHERMOT	5354.00	20.50	0.38%	4.76	254.66	5906.50	9.35%	4253.85	25.86%	-1.91%	12.68%
GRASIM	2519.30	-26.50	-1.04%	12.09	305.09	2877.75	12.46%	2171.60	16.01%	-6.35%	9.91%
HCLTECH	1628.00	-8.60	-0.53%	18.83	305.94	2012.20	19.09%	1235.00	31.82%	3.81%	23.60%
HDFCBANK	1931.00	-13.90	-0.71%	73.34	1411.60	1978.90	2.42%	1454.00	32.81%	1.03%	26.99%
HDFCLIFE	765.00	-11.85	-1.53%	34.56	265.39	791.10	3.30%	511.40	49.59%	6.75%	41.28%
HEROMOTOCO	4221.00	-88.30	-2.05%	7.71	325.85	6246.25	32.42%	3344.00	26.23%	15.21%	-15.83%
HINDALCO	630.65	-2.85	-0.45%	83.96	528.06	772.65	18.38%	546.45	15.41%	0.22%	-8.10%
HINDUNILVR	2367.90	19.60	0.83%	11.78	279.20	3035.00	21.98%	2136.00	10.86%	1.05%	0.83%
ICICIBANK	1447.70	1.90	0.13%	94.58	1364.19	1471.60	1.62%	1051.05	37.74%	0.94%	28.97%
INDUSINDBK	812.05	-4.90	-0.60%	40.94	333.96	1550.00	47.61%	606.00	34.00%	-4.23%	-44.12%
INFY	1551.00	-11.70	-0.75%	43.74	678.05	2006.45	22.70%	1307.00	18.67%	3.71%	11.07%
ITC	418.50	0.45	0.11%	149.72	626.05	528.50	20.81%	390.15	7.27%	-2.84%	-1.97%
JIOFIN	286.70	0.05	0.02%	126.38	362.13	368.30	22.16%	198.65	44.32%	10.76%	-16.76%
JSWSTEEL	978.80	-14.70	-1.48%	17.90	174.94	1074.90	8.94%	823.80	18.82%	2.09%	12.83%
KOTAKBANK	2061.20	-13.50	-0.65%	27.01	557.30	2301.90	10.46%	1602.45	28.63%	-5.06%	23.46%
LT	3669.00	-6.10	-0.17%	19.54	715.28	3963.50	7.43%	2965.30	23.73%	10.37%	0.16%
M&M	3024.00	47.20	1.59%	29.68	894.87	3270.95	7.55%	2425.00	24.70%	1.73%	18.78%
MARUTI	12273.00	-46.00	-0.37%	2.65	324.17	13680.00	10.29%	10725.00	14.43%	-0.70%	-0.65%
NESTLEIND	2402.50	6.30	0.26%	10.26	246.83	2778.00	13.52%	2110.00	13.86%	2.50%	1.75%
NTPC	332.40	-1.50	-0.45%	294.79	977.45	448.45	25.88%	292.80	13.52%	-4.18%	-6.99%
ONGC	238.04	-1.36	-0.57%	62.78	149.70	345.00	31.00%	205.00	16.12%	-1.65%	-9.44%
POWERGRID	292.80	3.05	1.05%	72.56	211.84	366.25	20.05%	247.30	18.40%	-4.67%	-6.53%
RELIANCE	1412.60	-8.30	-0.58%	80.98	1140.00	1608.80	12.20%	1114.85	26.71%	-0.11%	-50.33%
SBILIFE	1800.90	-11.30	-0.62%	12.39	224.16	1936.00	6.98%	1307.70	37.72%	2.69%	30.71%
SBIN	813.50	1.20	0.15%	268.91	2190.86	912.00	10.80%	680.00	19.63%	1.54%	-2.17%
SHRIRAMFIN	641.05	1.70	0.27%	43.44	277.12	730.45	12.24%	438.60	46.16%	5.82%	-72.84%
SUNPHARMA	1676.00	-1.60	-0.10%	18.20	304.55	1960.35	14.51%	1377.20	21.70%	-8.30%	14.92%
TATACONSUM	1116.40	10.10	0.91%	9.07	101.32	1250.10	10.70%	882.90	26.45%	-4.37%	4.34%
TATAMOTORS	711.55	-7.95	-1.10%	97.10	691.76	1179.00	39.65%	535.75	32.81%	10.35%	-22.05%
TATASTEEL	159.12	-1.90	-1.18%	313.58	498.18	184.60	13.80%	122.62	29.77%	14.05%	-3.70%
TCS	3445.80	-17.60	-0.51%	18.77	646.08	4592.25	24.96%	3056.05	12.75%	0.54%	-5.65%
TECHM	1551.00	-22.90	-1.45%	21.21	328.71	1807.70	14.20%	1193.65	29.94%	5.19%	28.12%
TITAN	3534.90	-20.10	-0.57%	7.26	255.11	3867.00	8.59%	2925.00	20.85%	6.41%	9.66%
TRENT	5625.00	-18.50	-0.33%	5.04	282.91	8345.00	32.59%	4196.00	34.06%	9.63%	23.78%
ULTRACEMCO	11165.00	-45.00	-0.40%	3.15	349.92	12339.00	9.51%	9534.95	17.10%	-3.73%	13.06%
WIPRO	247.58	-2.09	-0.84%	58.42	144.58	324.60	23.73%	208.50	18.74%	2.80%	-43.02%
ETERNAL	240.92	2.61	1.10%	556.89	1340.38	304.70	20.93%	146.30	64.68%	1.72%	#VALUE!

Disclaimer / Disclosures

ANALYST CERTIFICATION

I, Mrs. Vaishali Parekh B.com, Research Analyst, author and the name subscribed to this report, hereby certify that all of the views expressed in this research report accurately reflect our views about the subject issuer(s) or securities. We also certify that no part of our compensation was, is, or will be directly or indirectly related to the specific recommendation(s) or view(s) in this report.

Terms & conditions and other disclosures:

Prabhudas Lilladher Pvt. Ltd, Mumbai, India (hereinafter referred to as "PL") is engaged in the business of Stock Broking, Portfolio Manager, Depository Participant and distribution for third party financial products. PL is a subsidiary of Prabhudas Lilladher Advisory Services Pvt Ltd. which has its various subsidiaries engaged in business of commodity broking, investment banking, financial services (margin funding) and distribution of third party financial/other products, details in respect of which are available at www.plindia.com

This document has been prepared by the Research Division of PL and is meant for use by the recipient only as information and is not for circulation. This document is not to be reported or copied or made available to others without prior permission of PL. It should not be considered or taken as an offer to sell or a solicitation to buy or sell any security.

The information contained in this report has been obtained from sources that are considered to be reliable. However, PL has not independently verified the accuracy or completeness of the same. Neither PL nor any of its affiliates, its directors or its employees accepts any responsibility of whatsoever nature for the information, statements and opinion given, made available or expressed herein or for any omission therein.

Recipients of this report should be aware that past performance is not necessarily a guide to future performance and value of investments can go down as well. The suitability or otherwise of any investments will depend upon the recipient's particular circumstances and, in case of doubt, advice should be sought from an independent expert/advisor.

Either PL or its affiliates or its directors or its employees or its representatives or its clients or their relatives may have position(s), make market, act as principal or engage in transactions of securities of companies referred to in this report and they may have used the research material prior to publication.

PL may from time to time solicit or perform investment banking or other services for any company mentioned in this document.

PL is registered as Research Analyst under Securities and Exchange Board of India (Research Analysts) Regulations, 2014 PL submits that no material disciplinary action has been taken on us by any Regulatory Authority impacting Equity Research Analysis activities.

PL or its research analysts or its associates or his relatives do not have any financial interest in the subject company.

PL or its research analysts or its associates or his relatives do not have actual/beneficial ownership of one per cent or more securities of the subject company at the end of the month immediately preceding the date of publication of the research report.

PL or its research analysts or its associates or his relatives do not have any material conflict of interest at the time of publication of the research report.

PL or its associates might have received compensation from the subject company in the past twelve months.

PL or its associates might have managed or co-managed public offering of securities for the subject company in the past twelve months or mandated by the subject company for any other assignment in the past twelve months.

PL or its associates might have received any compensation for investment banking or merchant banking or brokerage services from the subject company in the past twelve months.

PL or its associates might have received any compensation for products or services other than investment banking or merchant banking or brokerage services from the subject company in the past twelve months PL or its associates might have received any compensation or other benefits from the subject company or third party in connection with the research report.

PL encourages independence in research report preparation and strives to minimize conflict in preparation of research report. PL or its analysts did not receive any compensation or other benefits from the subject Company or third party in connection with the preparation of the research report. PL or its Research Analysts do not have any material conflict of interest at the time of publication of this report.

It is confirmed that Mrs.Vaishali Parekh B.com, Research Analyst of this report has not received any compensation from the companies mentioned in the report in the preceding twelve months compensation of our Research Analysts is not based on any specific merchant banking, investment banking or brokerage service transactions.

The Research analysts for this report certifies that all of the views expressed in this report accurately reflect his or her personal views about the subject company or companies and its or their securities, and no part of his or her compensation was, is or will be, directly or indirectly related to specific recommendations or views expressed in this report.

The research analysts for this report has not served as an officer, director or employee of the subject company PL or its research analysts have not engaged in market making activity for the subject company

Our sales people, traders, and other professionals or affiliates may provide oral or written market commentary or trading strategies to our clients that reflect opinions that are contrary to the opinions expressed herein, and our proprietary trading and investing businesses may make investment decisions that are inconsistent with the recommendations expressed herein. In reviewing these materials, you should be aware that any or all of the foregoing, among other things, may give rise to real or potential conflicts of interest.

PL and its associates, their directors and employees may (a) from time to time, have a long or short position in, and buy or sell the securities of the subject company or (b) be engaged in any other transaction involving such securities and earn brokerage or other compensation or act as a market maker in the financial instruments of the subject company or act as an advisor or lender/borrower to the subject company or may have any other potential conflict of interests with respect to any recommendation and other related information and opinions.