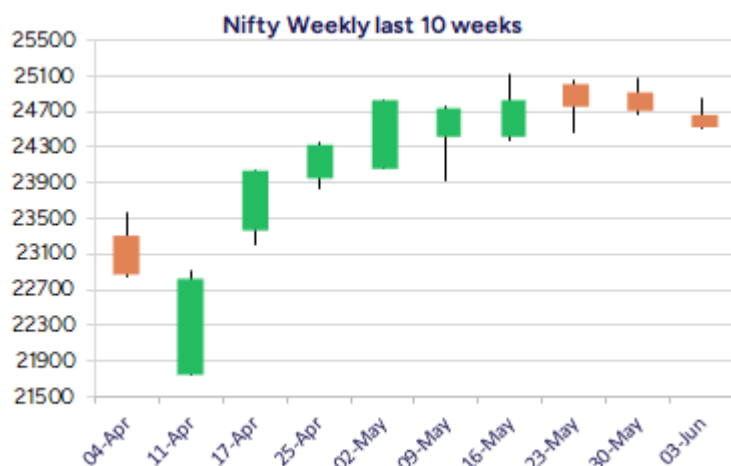
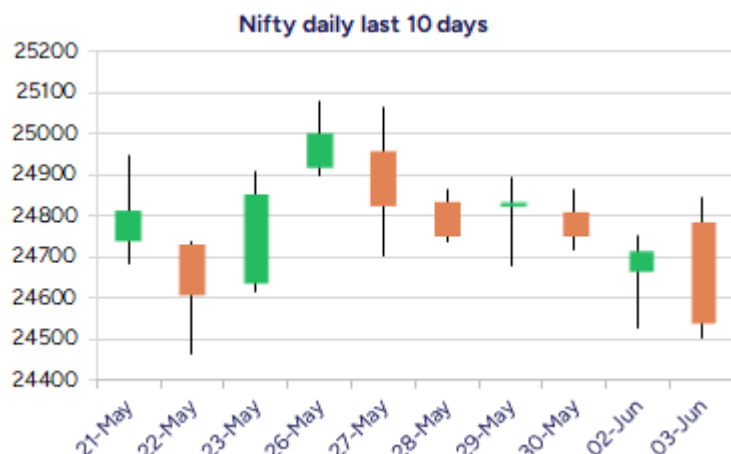


Date: 04 June 2025

\* Sensex 80737.51 - 636.24

\* Nifty 24542.50 - 174.10

\* Bank Nifty 55599.95 - 303.45



\*Blue candle → Close rate > Open rate \* Red candle → Close rate < Open rate

## Market Preview

### Nifty sustains above the crucial 24500 zone

Nifty on the back of weak global cues witnessed profit booking as the day progressed ahead and closed near the 24500 zone with sentiment maintained with a cautious approach. BankNifty once again slipped below the important zone of 55800 level with bias overall maintained positive. The market breadth turned weak with the advance decline indicating a ratio of 3:4 at close.

## Market Forecast

### Nifty daily range 24400-24800

Nifty witnessed resistance near the 24800 zone in the morning session and succumbed to profit booking as the day progressed on the back of weak global cues to witness profit booking and closed near the important support zone at 24500 level. The index needs to sustain above the 24500 zone failing which the bias would turn slightly weak and thereafter, the significant 200 period MA at 24050 zone would be the next major support positioned. With the geo-political tensions once again looming around, the sentiment would be maintained with a cautious approach as of now.

BankNifty, fizzled out the positive development witnessed in the last session and once again has been gripped inside the tight range of 55800 and 54500 levels with overall bias remaining positive as of now. As mentioned earlier, the index needs to sustain above the crucial support of 54500 level to maintain the overall bias intact and would need a decisive breach above the 55800 levels to breakthrough above the tight range and expect for fresh upward move in the coming days.

The support for the day is seen at 24400 levels while the resistance is seen at 24800 levels. BankNifty would have the daily range of 55200-56000 levels.

Indices	Period	Closing	% Chng	Trend	Reversal	2 Sup	1 Sup	Pivot	1 Res	2 Res
Nifty	Daily	24542.50	-0.70%	-6	24819.05	24287	24415	24630	24758	24973
	Weekly	24750.70	-0.41%	11	24617.50	24438	24595	24837	24993	25235
	Monthly	24750.70	1.71%	1	24390.40	23422	24086	24600	25265	25779
Bank Nifty	Daily	55599.95	-0.54%	-1	55755.60	59629	57615	60519	58505	61409
	Weekly	55749.70	0.63%	3	55559.45	54724	55237	55555	56068	56386
	Monthly	55749.70	1.20%	2	53879.10	52648	54199	55036	56587	57424
Sensex	Daily	80737.51	-0.78%	-6	81594.75	79830	80284	81029	81483	82228
	Weekly	81451.01	-0.33%	11	81091.35	80302	80876	81684	82259	83067
	Monthly	81451.01	1.51%	1	80320.40	77296	79374	81046	83123	84796

Daily Trend turned Up			
Scrip Name	LCP	Curr Trnd	Reversal
BSE	2764.9	-10	2424
CHAMBLFERT	561.9	-2	560.8
GMDC	366.7	-2	365.65
GNFC	551.35	-2	544.4
GSFC	208.42	-3	203.4
GSPL	331.95	-10	330.25
HINDZINC	468.75	-1	457.7
INDIACEM	351.7	-2	343.3
INDIAMART	2361.7	-7	2332
INDIGO	5383.5	-10	5358.4
JSWENERGY	499.05	-5	497.65
SIEMENS	3314	-2	3304.4

\* Trends turned Up after a significant period

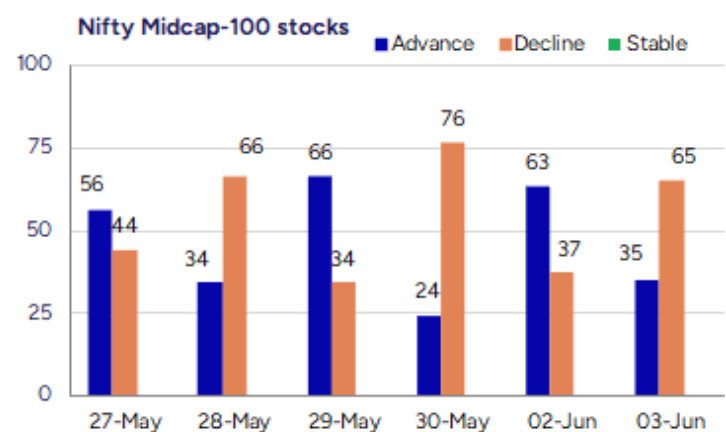
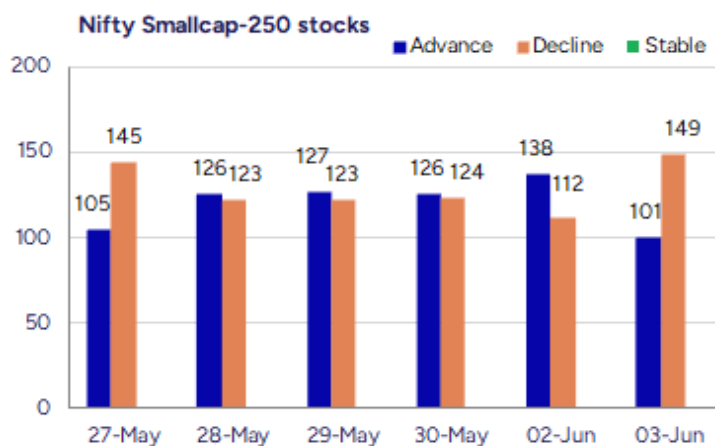
Daily Trend turned Down			
Scrip Name	LCP	Curr Trnd	Reversal
ADANI PORTS	1432.3	5	1451.55
ASHOKA	214.47	16	221
COFORGE	8499	6	8575.8
GLAXO	3245.1	9	3261.05
GREENPLY	319.25	16	323.9
ICICIPRULI	640.9	16	664.1
INDUSINDBK	800.85	8	814.15
LARSENTOUBRO	3644.8	6	3668.5
MFSL	1513.2	2	1521.8
NHPC	85.09	2	87.1
SYNGENE	641.05	9	647.85
WABAG	1604.7	8	1637.05

\* Trends turned Down after a significant period

### Gainers - Losers ( Nifty 500 Stocks )

Gainers			
Company Name	Last Price	% Gain	Volume
NRB Industrial	37.17	19.98	1324014
Servotech Renew	147.26	19.39	10913408
Fert and Chem	1046.8	17.84	17018421
Lexus Granito	36.75	16.26	117261
Agro Phos India	40.69	15.5	1035778
Marvel Decor Lt	104.95	14.7	1000
Vilas Transcore	541	13.99	216000

Losers			
Company Name	Last Price	% Loss	Volume
Trom Industries	114.65	-18.14	416400
Yes Bank	20.86	-10.4	1425406799
APTUS VALUE	307	-8.77	90793260
Enfuse Solution	225.4	-8.58	22200
V R Infraspac	203	-8.46	400
Ola Electric	49.33	-8.1	277575813
Pil Italica	17.22	-7.91	863649



## Nifty Daily chart with RSI indicator



## BankNifty Daily chart with RSI indicator



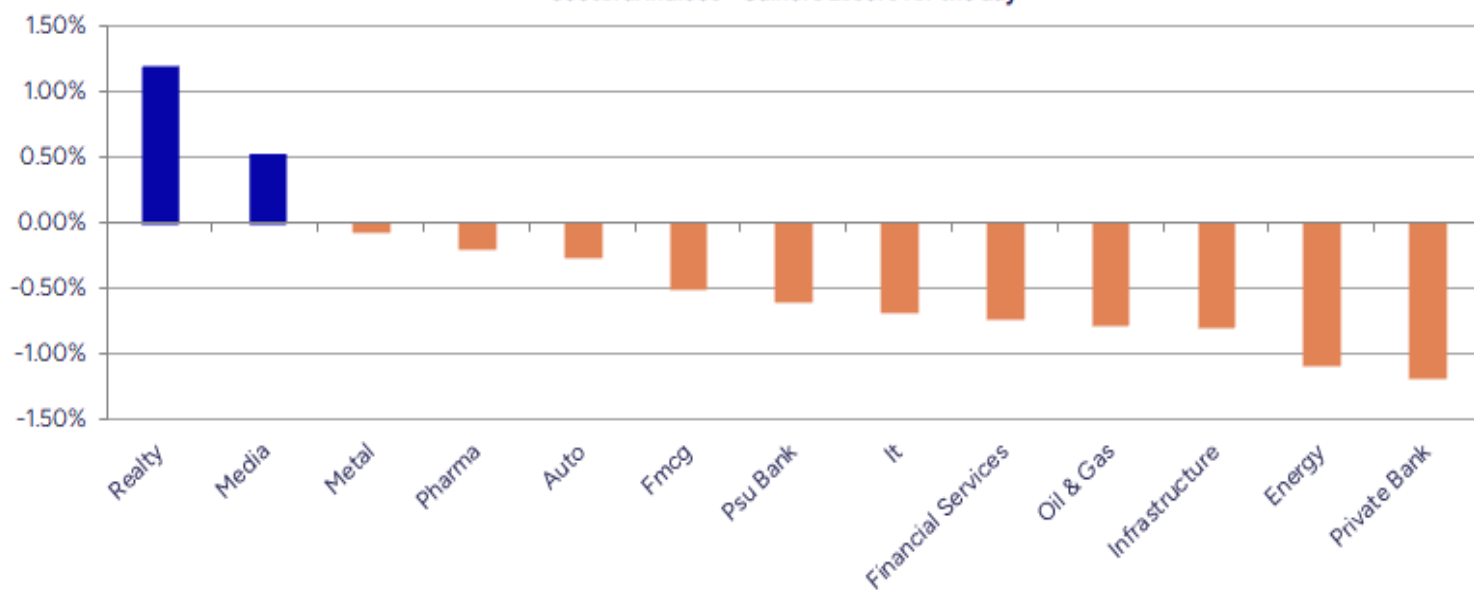
Breakouts - Cross above 200 DMA			
Company Name	LCP	Change %	200 DMA
Madras Fert	99.12	6.91	92.71
India Cements	351.7	6.26	330.98
Agro Phos India	40.69	5.69	38.5
Dharmaj Crop	283.16	5.26	269.02
Oriana Power	1968.85	4.77	1879.17
Sobha	1533	3.72	1478
Ideaforge Tech	561.6	3.61	542.01
Vinyl Chemicals	342.15	3.52	330.52
Uniphos Ent	164.63	3.47	159.11
Bang Overseas	59.41	2.98	57.69
GSFC	208.42	2.53	203.27
Gopal Snacks	360.9	2.28	352.85
ADF Foods	272.56	2.18	266.74
Vasa Denticity	653.4	2.03	640.43
Gloster	686.9	2.00	673.45
Indegene	619.7	1.79	608.78
SMS Lifescience	1315	1.56	1294.81
Infomedia Press	6.83	1.49	6.73

\* Stocks crossing above its Simple Moving Average (200DMA)

Breakdown - Cross below 200 DMA			
Company Name	LCP	Change %	200 DMA
APTUS VALUE	307	-4.01	319.83
Zenithexpo	255.6	-3.31	264.34
ICICI Prudentia	640.9	-2.75	659.05
Hind Composites	479.75	-2.53	492.22
Manav Infra Pro	14.2	-2.41	14.55
Texmo Pipes	62.65	-2.32	64.14
Binani Ind	14.67	-2.20	15
Consol Finvest	197.25	-2.18	201.64
India Tourism D	608.55	-1.99	620.9
Zodiac Energy	496.8	-1.92	506.52
Zodiac Clothing	112.48	-1.82	114.56
Chetana Educati	91	-1.72	92.59
Adani Trans	856.55	-1.56	870.12
Dhanlaxmi Bank	31.32	-1.51	31.8
Talbro's Auto	288.9	-1.48	293.23
Thomas Scott	311.55	-1.41	315.99
IOC	141.04	-1.40	143.04
Thomas Cook	172.31	-1.27	174.52

\* Stocks crossing below its Simple Moving Average (200DMA)

Sectoral Indices - Gainers Losers for the day



Stocks witnessing a volume surge as compared to their 5 day average volume

Watch out for the stocks that have seen a huge spurt in its share price over the last three days

Volume Shockers - NSE					
Company name	LCP	% Chg	Volume	Avg Vol *	% Chg
Diamond Power	107.09	-2.34	825986	6800	12046
Salona Cotspin	268.65	7.25	207707	1841	11181
APTUS VALUE	307	-8.77	90793260	1056560	8493
KIOCL	315.1	5.58	3451940	59510	5701
AstraZeneca	9336.5	0	309229	7428	4063
Fert and Chem	1046.8	17.84	17018421	429173	3865
Brainbees Solu	371.95	9	39161621	1056728	3606
Signet Ind	71.92	-4.15	1224464	37516	3164
Laxmi Goldorna	573	-0.1	33109	1094	2927
Lumax Auto Tech	940.8	4.69	1969008	67087	2835
GE Power India	281.75	-1.47	1864286	64435	2793
Shakti Pumps	872.65	1.47	1044947	38631	2605
Krishana Phosch	403.65	-0.04	678606	25704	2540
HEG	517.35	-0.37	2031397	80062	2437
Reliance Chemo	191.7	0.41	156908	7564	1974
NRB Industrial	37.17	19.98	1324014	68969	1820
Delta	97.83	6.75	154678	8923	1633
Yes Bank	20.86	-10.4	1425406799	8.4E+07	1590
BEW Engineering	160.65	-2.64	18500	1125	1544
Privi Special	2324.1	-0.03	407392	26329	1447

\* the Average Volume of last 5 days

Price Shockers - NSE				
Company name	LCP	Prv Close	% Chg	Volume
NRB Industrial	37.17	25.82	43.96	1324014
Agro Phos India	40.69	33.55	21.28	1035778
Sameera Agro	103.85	86.1	20.62	210400
Servotech Renew	147.26	123.38	19.35	10913408
Dharmaj Crop	283.16	237.9	19.02	943162
Fert and Chem	1046.8	882.95	18.56	17018421
Omaxe	100.15	85.22	17.52	1230252
Mangalam Alloys	47.35	40.3	17.49	118400
Delta	97.83	83.31	17.43	154678
AstraZeneca	9336.5	7972	17.12	309229
Lexus Granito	36.75	31.7	15.93	117261
Lumax Auto Tech	940.8	811.55	15.93	1969008
FIEM Ind	1844.5	1593.3	15.77	627296
ADF Foods	272.56	235.99	15.5	713686
Eurotex	18.18	15.75	15.43	21344
Signet Ind	71.92	62.53	15.02	1224464
Ndr Auto Compon	995.75	875.55	13.73	310742
Country Club	18.1	15.92	13.69	329408
Refex Ind	511.8	454.15	12.69	1217867
Brigade Ent	1231.9	1094.4	12.56	781878

\* the % price rise of the last 3 days



Symbol	LTP	Chng	% Chng	Volume (lacs)	Turnover (crs.)	52w High	Diff with 52w H	52w Low	Diff with 52w L	365 days % chng	30 days % chng
NIFTY 50	24542.50	-174.10	-0.70%	3492.17	28902.06	26277.35	6.60%	21743.65	12.87%	1.52%	9.70%
ADANIENT	2471.10	-47.70	-1.89%	9.62	238.75	3743.90	34.00%	2025.00	22.03%	9.79%	-26.16%
ADANIPTS	1434.00	-34.00	-2.32%	36.76	530.00	1621.40	11.56%	995.65	44.03%	15.86%	2.13%
APOLLOHOSP	6805.00	-110.50	-1.60%	4.90	334.46	7545.35	9.81%	5693.20	19.53%	-0.56%	18.43%
ASIANPAINT	2258.00	-8.70	-0.38%	7.92	179.01	3394.90	33.49%	2124.75	6.27%	-5.94%	-21.33%
AXISBANK	1180.70	-13.70	-1.15%	81.55	964.72	1339.65	11.87%	933.50	26.48%	1.03%	2.78%
BAJAJ-AUTO	8569.00	55.50	0.65%	5.66	484.13	12774.00	32.92%	7089.35	20.87%	8.64%	-6.29%
BAJAJFINSV	1993.60	-35.40	-1.74%	15.23	304.03	2135.00	6.62%	1419.05	40.49%	3.63%	32.74%
BAJFINANCE	8972.00	-146.50	-1.61%	9.08	818.67	9660.00	7.12%	6375.70	40.72%	2.89%	36.14%
BEL	385.90	-1.60	-0.41%	186.26	722.12	393.50	1.93%	230.00	67.78%	24.46%	30.93%
BHARTIARTL	1841.60	-12.50	-0.67%	55.97	1032.10	1917.00	3.93%	1219.05	51.07%	0.12%	35.06%
CIPLA	1471.50	1.30	0.09%	8.70	127.72	1702.05	13.55%	1335.00	10.22%	-3.63%	1.59%
COALINDIA	392.30	-7.40	-1.85%	73.49	289.29	543.55	27.83%	349.25	12.33%	3.98%	-18.63%
DRREDDY	1249.00	1.30	0.10%	8.12	101.20	1421.49	12.13%	1020.00	22.45%	5.48%	-78.46%
EICHERMOT	5349.50	-11.50	-0.21%	4.80	256.28	5906.50	9.43%	4253.85	25.76%	-1.41%	13.26%
GRASIM	2556.30	32.20	1.28%	14.94	380.08	2877.75	11.17%	2171.60	17.72%	-7.14%	8.97%
HCLTECH	1630.50	-1.00	-0.06%	23.80	388.19	2012.20	18.97%	1235.00	32.02%	3.49%	23.22%
HDFCBANK	1923.50	-8.60	-0.45%	121.89	2357.10	1978.90	2.80%	1454.00	32.29%	0.37%	26.15%
HDFCLIFE	758.00	-8.70	-1.13%	33.57	254.54	791.10	4.18%	511.40	48.22%	5.35%	39.44%
HEROMOTOCO	4205.10	-27.20	-0.64%	4.17	176.75	6246.25	32.68%	3344.00	25.75%	13.15%	-17.33%
HINDALCO	631.50	0.40	0.06%	37.83	240.08	772.65	18.27%	546.45	15.56%	-0.16%	-8.45%
HINDUNILVR	2356.00	-15.60	-0.66%	16.44	386.66	3035.00	22.37%	2136.00	10.30%	2.05%	1.83%
ICICIBANK	1437.00	-13.50	-0.93%	111.67	1605.87	1471.60	2.35%	1051.05	36.72%	1.26%	29.39%
INDUSINDBK	799.95	-12.75	-1.57%	32.41	261.48	1550.00	48.39%	606.00	32.00%	-4.72%	-44.41%
INFY	1543.00	-10.80	-0.70%	68.53	1059.70	2006.45	23.10%	1307.00	18.06%	3.12%	10.44%
ITC	417.00	-2.30	-0.55%	132.12	552.30	528.50	21.10%	390.15	6.88%	-2.55%	-1.68%
JIOFIN	283.80	-2.65	-0.93%	92.60	264.03	368.30	22.94%	198.65	42.86%	10.68%	-16.81%
JSWSTEEL	974.00	-4.80	-0.49%	11.38	111.26	1074.90	9.39%	823.80	18.23%	0.58%	11.16%
KOTAKBANK	2041.00	-22.60	-1.10%	64.64	1322.93	2301.90	11.33%	1602.45	27.37%	-5.56%	22.80%
LT	3642.30	-3.30	-0.09%	24.72	899.49	3963.50	8.10%	2965.30	22.83%	10.51%	0.28%
M&M	3044.00	18.10	0.60%	32.04	975.89	3270.95	6.94%	2425.00	25.53%	3.41%	20.73%
MARUTI	12130.00	-160.00	-1.30%	3.69	448.77	13680.00	11.33%	10725.00	13.10%	-0.94%	-0.88%
NESTLEIND	2391.20	-15.10	-0.63%	7.34	176.15	2778.00	13.92%	2110.00	13.33%	2.93%	2.18%
NTPC	328.80	-3.75	-1.13%	140.78	463.22	448.45	26.68%	292.80	12.30%	-4.56%	-7.37%
ONGC	237.25	-1.06	-0.44%	95.12	226.50	345.00	31.23%	205.00	15.73%	-2.10%	-9.85%
POWERGRID	288.15	-4.90	-1.67%	109.86	318.24	366.25	21.32%	247.30	16.52%	-3.59%	-5.47%
RELIANCE	1405.40	-8.30	-0.59%	112.50	1588.93	1608.80	12.64%	1114.85	26.06%	-0.61%	-50.58%
SBILIFE	1779.40	-23.10	-1.28%	15.76	281.26	1936.00	8.09%	1307.70	36.07%	2.14%	30.01%
SBIN	808.20	-5.45	-0.67%	142.45	1155.36	912.00	11.38%	680.00	18.85%	1.71%	-2.01%
SHRIRAMFIN	649.00	6.45	1.00%	53.35	346.43	730.45	11.15%	438.60	47.97%	6.35%	-72.70%
SUNPHARMA	1667.50	-7.10	-0.42%	25.57	426.48	1960.35	14.94%	1377.20	21.08%	-8.46%	14.71%
TATACONSUM	1112.10	-8.30	-0.74%	7.96	88.69	1250.10	11.04%	882.90	25.96%	-3.15%	5.67%
TATAMOTORS	704.30	-7.30	-1.03%	91.56	648.33	1179.00	40.26%	535.75	31.46%	9.14%	-22.90%
TATASTEEL	157.39	-1.65	-1.04%	283.96	449.65	184.60	14.74%	122.62	28.36%	12.65%	-4.88%
TCS	3411.40	-38.40	-1.11%	28.48	973.56	4592.25	25.71%	3056.05	11.63%	0.15%	-6.02%
TECHM	1544.80	-4.30	-0.28%	23.16	357.71	1807.70	14.54%	1193.65	29.42%	3.53%	26.10%
TITAN	3521.00	-4.50	-0.13%	6.77	238.58	3867.00	8.95%	2925.00	20.38%	5.52%	8.75%
TRENT	5575.50	-46.00	-0.82%	5.10	286.02	8345.00	33.19%	4196.00	32.88%	9.20%	23.30%
ULTRACEMCO	11013.00	-182.00	-1.63%	3.50	386.96	12339.00	10.75%	9534.95	15.50%	-3.86%	12.90%
WIPRO	246.47	-1.21	-0.49%	85.72	211.36	324.60	24.07%	208.50	18.21%	1.98%	-43.48%
ETERNAL	238.35	-2.85	-1.18%	918.71	2211.05	304.70	21.78%	146.30	62.92%	2.95%	#VALUE!

## Disclaimer / Disclosures

### ANALYST CERTIFICATION

I, Mrs. Vaishali Parekh B.com, Research Analyst, author and the name subscribed to this report, hereby certify that all of the views expressed in this research report accurately reflect our views about the subject issuer(s) or securities. We also certify that no part of our compensation was, is, or will be directly or indirectly related to the specific recommendation(s) or view(s) in this report.

Terms & conditions and other disclosures:

Prabhudas Lilladher Pvt. Ltd, Mumbai, India (hereinafter referred to as "PL") is engaged in the business of Stock Broking, Portfolio Manager, Depository Participant and distribution for third party financial products. PL is a subsidiary of Prabhudas Lilladher Advisory Services Pvt Ltd. which has its various subsidiaries engaged in business of commodity broking, investment banking, financial services (margin funding) and distribution of third party financial/other products, details in respect of which are available at [www.plindia.com](http://www.plindia.com)

This document has been prepared by the Research Division of PL and is meant for use by the recipient only as information and is not for circulation. This document is not to be reported or copied or made available to others without prior permission of PL. It should not be considered or taken as an offer to sell or a solicitation to buy or sell any security.

The information contained in this report has been obtained from sources that are considered to be reliable. However, PL has not independently verified the accuracy or completeness of the same. Neither PL nor any of its affiliates, its directors or its employees accepts any responsibility of whatsoever nature for the information, statements and opinion given, made available or expressed herein or for any omission therein.

Recipients of this report should be aware that past performance is not necessarily a guide to future performance and value of investments can go down as well. The suitability or otherwise of any investments will depend upon the recipient's particular circumstances and, in case of doubt, advice should be sought from an independent expert/advisor.

Either PL or its affiliates or its directors or its employees or its representatives or its clients or their relatives may have position(s), make market, act as principal or engage in transactions of securities of companies referred to in this report and they may have used the research material prior to publication.

PL may from time to time solicit or perform investment banking or other services for any company mentioned in this document.

PL is registered as Research Analyst under Securities and Exchange Board of India (Research Analysts) Regulations, 2014 PL submits that no material disciplinary action has been taken on us by any Regulatory Authority impacting Equity Research Analysis activities.

PL or its research analysts or its associates or his relatives do not have any financial interest in the subject company.

PL or its research analysts or its associates or his relatives do not have actual/beneficial ownership of one per cent or more securities of the subject company at the end of the month immediately preceding the date of publication of the research report.

PL or its research analysts or its associates or his relatives do not have any material conflict of interest at the time of publication of the research report.

PL or its associates might have received compensation from the subject company in the past twelve months.

PL or its associates might have managed or co-managed public offering of securities for the subject company in the past twelve months or mandated by the subject company for any other assignment in the past twelve months.

PL or its associates might have received any compensation for investment banking or merchant banking or brokerage services from the subject company in the past twelve months.

PL or its associates might have received any compensation for products or services other than investment banking or merchant banking or brokerage services from the subject company in the past twelve months PL or its associates might have received any compensation or other benefits from the subject company or third party in connection with the research report.

PL encourages independence in research report preparation and strives to minimize conflict in preparation of research report. PL or its analysts did not receive any compensation or other benefits from the subject Company or third party in connection with the preparation of the research report. PL or its Research Analysts do not have any material conflict of interest at the time of publication of this report.

It is confirmed that Mrs.Vaishali Parekh B.com, Research Analyst of this report has not received any compensation from the companies mentioned in the report in the preceding twelve months compensation of our Research Analysts is not based on any specific merchant banking, investment banking or brokerage service transactions.

The Research analysts for this report certifies that all of the views expressed in this report accurately reflect his or her personal views about the subject company or companies and its or their securities, and no part of his or her compensation was, is or will be, directly or indirectly related to specific recommendations or views expressed in this report.

The research analysts for this report has not served as an officer, director or employee of the subject company PL or its research analysts have not engaged in market making activity for the subject company

Our sales people, traders, and other professionals or affiliates may provide oral or written market commentary or trading strategies to our clients that reflect opinions that are contrary to the opinions expressed herein, and our proprietary trading and investing businesses may make investment decisions that are inconsistent with the recommendations expressed herein. In reviewing these materials, you should be aware that any or all of the foregoing, among other things, may give rise to real or potential conflicts of interest.

PL and its associates, their directors and employees may (a) from time to time, have a long or short position in, and buy or sell the securities of the subject company or (b) be engaged in any other transaction involving such securities and earn brokerage or other compensation or act as a market maker in the financial instruments of the subject company or act as an advisor or lender/borrower to the subject company or may have any other potential conflict of interests with respect to any recommendation and other related information and opinions.