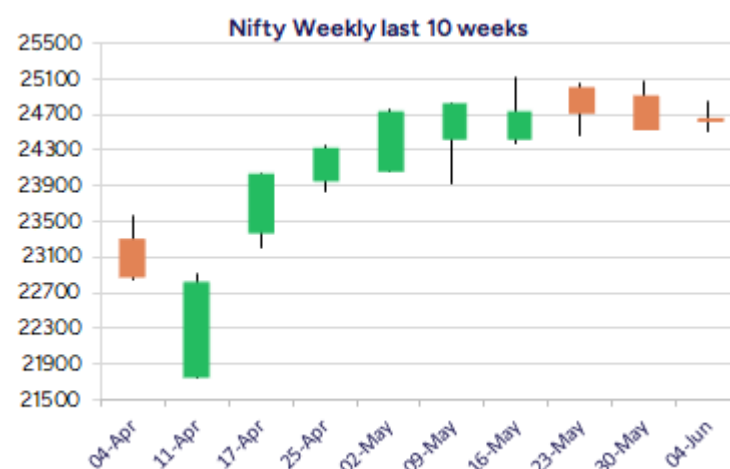
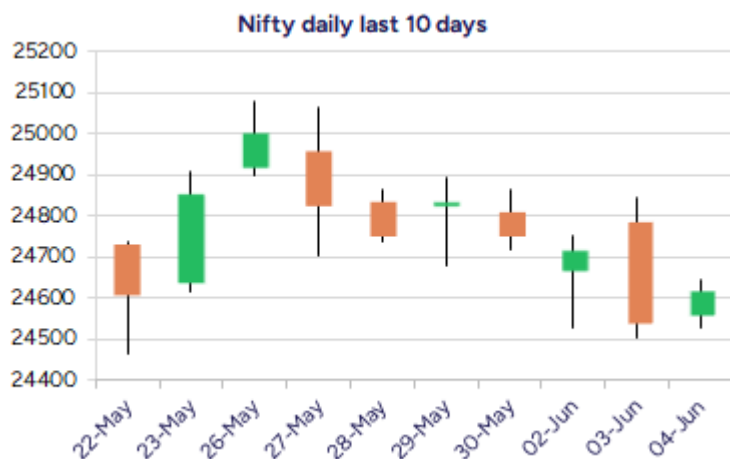


Date: 05th June 2025

* Sensex 80998.25 +260.74

* Nifty 24620.20 +77.70

* Bank Nifty 55676.85 +76.90



*Blue candle → Close rate > Open rate * Red candle → Close rate < Open rate

Market Preview

Nifty ends above the 24600 zone

Nifty once again sustained above the important support of 24500 zone and with a gradual rise witnessed during the session closed just above the 24600 level. BankNifty has been hovering near the resistance zone of 55800 and would need a significant breakout to expect of fresh upward move in the coming sessions. The market breadth was strong with the advance decline indicating a ratio of 3:2 at close.

Market Forecast

Nifty daily range 24500-24800

Nifty has once again sustained the important support near 24500 zone and with a narrow rangebound session witnessed during the entire day closed marginally in the green near 24600 level with overall bias maintained intact. With overall consolidation happening, the index needs a decisive breach above the 25000 zone, as mentioned earlier, to trigger for fresh upward move whereas at the same time, it needs to sustain above the 24500 zone failing which the bias would turn slightly weak and thereafter, the significant 200 period MA at 24050 zone would be the next major support positioned.

BankNifty, continue to witness sluggish movement within a very narrow band for quite a long time and would need a decisive breach above the 55800 zone to give a breakout above the tight range and expect for fresh move on the upside. As mentioned earlier, the index needs to sustain above the crucial support of 54500 level to maintain the overall bias intact and with the RBI policy expected in the coming sessions, there can anticipation of a major move on the positive side.

The support for the day is seen at 24500 levels while the resistance is seen at 24800 levels. BankNifty would have the daily range of 55300-56200 levels.

Indices	Period	Closing	% Chng	Trend	Reversal	2 Sup	1 Sup	Pivot	1 Res	2 Res
Nifty	Daily	24620.20	0.32%	-7	24739.15	24485	24552	24598	24666	24712
	Weekly	24750.70	-0.41%	11	24617.50	24438	24595	24837	24993	25235
	Monthly	24750.70	1.71%	1	24390.40	23422	24086	24600	25265	25779
Bank Nifty	Daily	55676.85	0.14%	-2	55730.50	55243	55460	55625	55842	56008
	Weekly	55749.70	0.63%	3	55559.45	54724	55237	55555	56068	56386
	Monthly	55749.70	1.20%	2	53879.10	52648	54199	55036	56587	57424
Sensex	Daily	80998.25	0.32%	-7	81354.40	80548	80773	80930	81155	81312
	Weekly	81451.01	-0.33%	11	81091.35	80302	80876	81684	82259	83067
	Monthly	81451.01	1.51%	1	80320.40	77296	79374	81046	83123	84796

Daily Trend turned Up			
Scrip Name	LCP	Curr Trnd	Reversal
AARTIIND	481.4	-3	476.3
ABB	6041.5	-3	6033.25
AJANTPHARM	2586.4	-9	2560.1
BALKRISIND	2471.4	-16	2458.55
BERGEPAIN	569.25	-2	558.45
BHARTIARTEL	1875.4	-1	1855.05
CESC	168.87	-9	166
DIXON	14956	-10	14649.7
EMAMILTD	593.9	-11	580.15
GLAXO	3420	-1	3281.15
GREAVESCOT	204.13	-9	202.15
HDFCBANK	1941.2	-2	1934.8

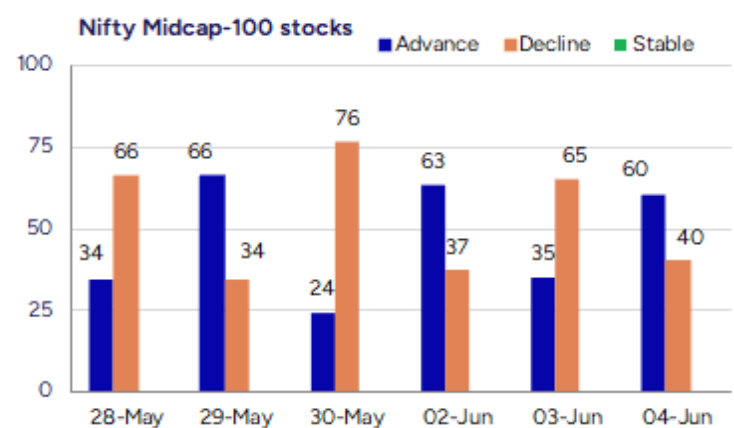
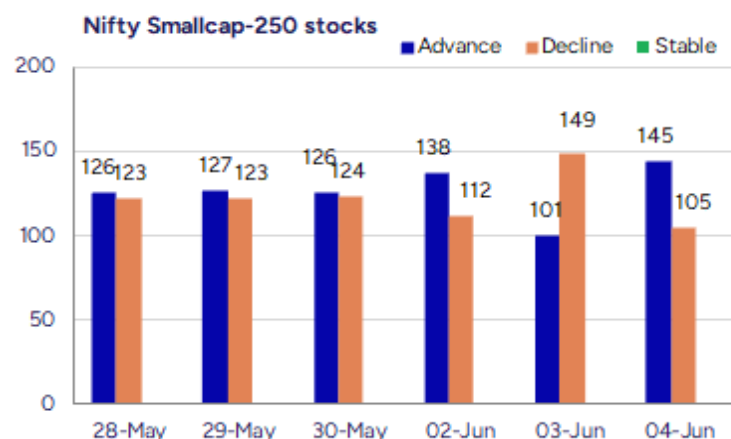
* Trends turned Up after a significant period

Daily Trend turned Up			
Scrip Name	LCP	Curr Trnd	Reversal
HSCL	482.35	-3	477.1
ICICIGI	1873.4	-2	1858.25
IRCTC	777.25	-11	775.95
JUBLFOOD	686.2	-1	657.9
KSCL	1480.3	-3	1477.45
LALPATHLAB	2850.4	-5	2826
LTI	5153	-3	5136.35
MOTHERSUMI	152.71	-2	152.25
NAM-INDIA	747.35	-1	743.2
ORACLEFIN	8665.5	-2	8442.55
RELIANCE	1423.5	-12	1421.4
TATACONSUM	1124.4	-11	1120.45

* Trends turned Up after a significant period

Gainers - Losers (Nifty 500 Stocks)

Gainers				Losers			
Company Name	Last Price	% Gain	Volume	Company Name	Last Price	% Loss	Volume
Rachana Infra	44.45	19.97	186700	Sun Pharma Adv	156.14	-20	17319371
Iware Supply	84.5	18.85	142800	Agro Phos India	36.45	-10.42	211335
Quick Heal Tech	352	17.24	5021505	Aditya Birla F	77.05	-10.41	244319551
Aprameya Engine	179.3	14.94	166000	NRB Industrial	33.45	-10.01	518395
Ircon Internati	221.3	14.11	101107340	Parsvnath	16.45	-10.01	2942610
Manoj Vaibhav G	269.02	13.94	2404621	Lasa Supergener	13.58	-9.53	570190
ZIM Lab	102	13.83	1296675	Saroja Pharma	38.2	-8.83	1600



Nifty Daily chart with RSI indicator



BankNifty Daily chart with RSI indicator



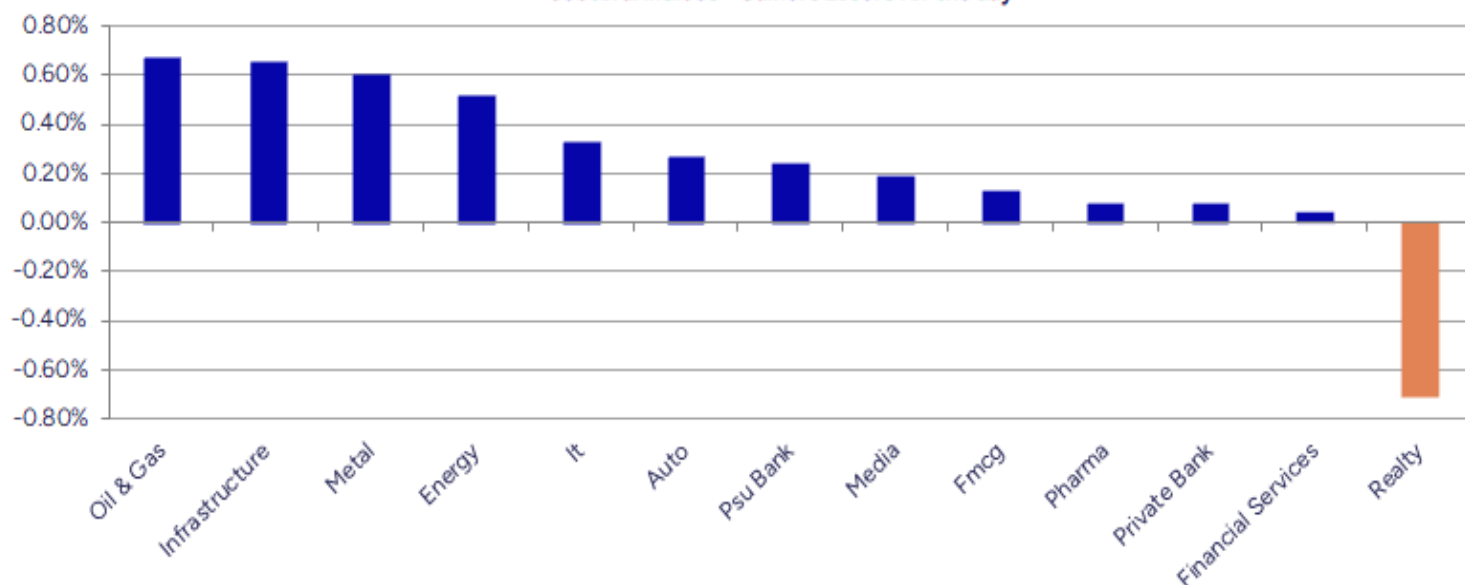
Breakouts - Cross above 200 DMA			
Company Name	LCP	Change %	200 DMA
Ircon Internati	220.46	11.10	198.43
Manoj Vaibhav G	266.84	10.69	241.07
Servotech Renew	164.08	9.78	149.46
HMT	68.48	4.95	65.25
KPIGREEN	505.55	4.82	482.32
Reliable Data S	80.85	4.67	77.24
Assoc Alcohol	1129.4	4.64	1079.36
Rachana Infra	44.45	3.54	42.93
Thomas Scott	327.1	3.45	316.18
Texmo Pipes	66.27	3.40	64.09
Jubilant Food	686.2	3.17	665.1
VIP Clothing	41.64	2.39	40.67
Hind Composites	503.4	2.36	491.81
Container Corp	805	2.13	788.18
Indraprastha	437	1.83	429.15
India Tourism D	629.65	1.52	620.2
PI Industries	3970.3	1.52	3910.85
HYBRIDFIN	13.13	1.23	12.97

* Stocks crossing above its Simple Moving Average (200DMA)

Breakdown - Cross below 200 DMA			
Company Name	LCP	Change %	200 DMA
Sun Pharma Adv	156.83	-14.19	182.77
Agro Phos India	36.77	-4.44	38.48
Pattech Fitwell	85.85	-3.23	88.72
Indegene	590.4	-3.06	609.02
Swaraj Suiting	221.8	-3.02	228.7
LG Balakrishnan	1262.2	-1.94	1287.13
Vardhman Poly	11.37	-1.64	11.56
J Kumar Infra	718.7	-1.48	729.46
Marksans Pharma	256.8	-1.36	260.33
IBL Finance	58.15	-1.19	58.85
Star Health	467.1	-1.06	472.1
Megastar Foods	242.1	-0.96	244.44
Godawari Power	189.91	-0.71	191.26
Oriental Hotels	159.09	-0.62	160.09
ADF Foods	265.68	-0.48	266.97
JSW Steel	968.55	-0.45	972.89
Sundaram-Clayto	2251.9	-0.45	2262
EIH Assoc Hotel	381.3	-0.33	382.58

* Stocks crossing below its Simple Moving Average (200DMA)

Sectoral Indices - Gainers Losers for the day



Stocks witnessing a volume surge as compared to their 5 day average volume

Watch out for the stocks that have seen a huge spurt in its share price over the last three days

Volume Shockers - NSE					
Company name	LCP	% Chg	Volume	Avg Vol *	% Chg
Diamond Power	107.78	0.64	6800	12094	829251
AstraZeneca	9493.5	1.68	7428	8223	618202
Indegene	590.4	-4.73	550626	7305	10776278
Laxmi Goldorna	572.95	-0.01	1094	4023	45092
Premier Explo	596.2	2.89	77069	3550	2813054
Aditya Birla F	76.77	-10.73	7165271	3315	44678339
NAVA	529.8	8.27	448488	2956	13704485
Saregama India	567.5	2.81	240522	2378	5960363
HEG	522.95	1.08	80062	2366	1974421
Ircon Internati	220.46	13.67	4340119	2240	01539702
BEW Engineering	164.95	2.68	1125	2167	25500
Krishival Foods	316.75	4.71	1200	2025	25500
Jai Balaji Ind	105.04	1.07	54390	1923	1100245
Lumax Auto Tech	991	5.34	67087	1837	1299266
Techno Electric	1542.9	5.52	88472	1369	1300080
Sky Gold	381.35	-1.08	25989	1333	372404
R K Swamy	196.44	5.45	119815	1258	1626632
Garware Technic	916.55	3.55	14113	1159	177614
Thomas Scott	327.1	4.99	4062	1104	48903
Data Patterns	2985.2	0.72	106334	1095	1270438

* the Average Volume of last 5 days

Price Shockers - NSE				
Company name	LCP	Prv Close	% Chg	Volume
Servotech Renew	164.08	123.38	32.99	15690283
NRB Industrial	33.66	25.82	30.36	518560
Sameera Agro	109	86.1	26.6	163200
Quick Heal Tech	351.75	285.65	23.14	5038952
Lumax Auto Tech	991	811.55	22.11	1299262
Premium Plast	39.6	33	20	60000
AstraZeneca	9493.5	7972	19.09	618202
Welspun Invest	1101.85	929.4	18.55	11917
Omaxe	100.33	85.22	17.73	477895
Mangalam Alloys	47.4	40.3	17.62	36800
Country Club	18.61	15.92	16.9	284278
Fert and Chem	1031.05	882.95	16.77	2189569
Pennar Inds	247.65	212.66	16.45	4428190
FIEM Ind	1850.1	1593.3	16.12	165070
Ind-Swift Labs	94.21	81.18	16.05	2293891
Nahar Poly Film	366	316.19	15.75	90764
HMT	68.48	59.17	15.73	133028
Naman In-Store	94.95	82.05	15.72	16000
Cyber Media Res	85.05	73.5	15.71	3200
Hind Nat Glass	18.92	16.36	15.65	18568

* the % price rise of the last 3 days

Symbol	LTP	Chng	% Chng	Volume (lacs)	Turnover (crs.)	52w High	Diff with 52w H	52w Low	Diff with 52w L	365 days % chng	30 days % chng
NIFTY 50	24620.20	77.70	0.32%	2808.03	21904.56	26277.35	6.31%	21743.65	13.23%	0.80%	5.50%
ADANIENT	2487.00	16.10	0.65%	5.53	136.80	3743.90	33.57%	2025.00	22.81%	7.70%	-32.22%
ADANIPTS	1434.30	2.00	0.14%	14.47	207.49	1621.40	11.54%	995.65	44.06%	13.04%	-9.57%
APOLLOHOSP	6860.00	47.50	0.70%	6.30	429.24	7545.35	9.08%	5693.20	20.49%	-2.04%	16.43%
ASIANPAINT	2251.00	-4.70	-0.21%	7.68	172.71	3394.90	33.69%	2124.75	5.94%	-6.39%	-21.31%
AXISBANK	1171.70	-9.80	-0.83%	43.06	505.67	1339.65	12.54%	933.50	25.52%	-0.06%	-3.46%
BAJAJ-AUTO	8576.00	13.00	0.15%	4.31	369.54	12774.00	32.86%	7089.35	20.97%	9.27%	-8.27%
BAJAJFINSV	1959.50	-32.40	-1.63%	11.70	230.32	2135.00	8.22%	1419.05	38.09%	1.73%	26.41%
BAJFINANCE	8994.50	15.50	0.17%	5.54	498.79	9660.00	6.89%	6375.70	41.07%	1.31%	29.84%
BEL	390.95	4.95	1.28%	206.41	800.72	393.50	0.65%	230.00	69.98%	23.98%	21.14%
BHARTIARTL	1873.00	31.70	1.72%	58.92	1103.84	1917.00	2.30%	1219.05	53.64%	-0.57%	32.36%
CIPLA	1470.40	-2.80	-0.19%	12.97	191.45	1702.05	13.61%	1335.00	10.14%	-3.43%	1.44%
COALINDIA	394.00	1.15	0.29%	38.61	151.74	543.55	27.51%	349.25	12.81%	2.20%	-23.32%
DRREDDY	1251.00	2.70	0.22%	13.88	174.09	1421.49	11.99%	1020.00	22.65%	5.53%	-78.42%
EICHERMOT	5300.00	-54.00	-1.01%	3.22	171.64	5906.50	10.27%	4253.85	24.59%	-1.54%	14.63%
GRASIM	2552.00	-0.40	-0.02%	5.29	134.92	2877.75	11.32%	2171.60	17.52%	-6.10%	7.75%
HCLTECH	1625.40	-5.00	-0.31%	16.60	270.85	2012.20	19.22%	1235.00	31.61%	3.42%	24.04%
HDFCBANK	1939.50	14.90	0.77%	64.81	1254.32	1978.90	1.99%	1454.00	33.39%	-0.02%	22.41%
HDFCLIFE	758.10	0.20	0.03%	23.22	176.77	791.10	4.17%	511.40	48.24%	4.14%	37.77%
HEROMOTOCO	4203.70	-4.90	-0.12%	3.54	148.98	6246.25	32.70%	3344.00	25.71%	12.51%	-18.45%
HINDALCO	635.90	3.90	0.62%	30.67	195.12	772.65	17.70%	546.45	16.37%	-0.02%	-9.19%
HINDUNILVR	2365.00	12.70	0.54%	32.88	772.53	3035.00	22.08%	2136.00	10.72%	1.22%	-0.15%
ICICIBANK	1431.10	-6.80	-0.47%	80.25	1148.11	1471.60	2.75%	1051.05	36.16%	0.38%	23.96%
INDUSINDBK	815.20	14.35	1.79%	38.78	314.57	1550.00	47.41%	606.00	34.52%	-6.11%	-47.65%
INFY	1550.00	7.00	0.45%	45.48	705.18	2006.45	22.75%	1307.00	18.59%	2.40%	9.75%
ITC	416.80	-0.15	-0.04%	125.97	525.47	528.50	21.14%	390.15	6.83%	-3.09%	-3.11%
JIOFIN	290.60	6.70	2.36%	136.38	392.45	368.30	21.10%	198.65	46.29%	9.70%	-20.28%
JSWSTEEL	968.35	-5.45	-0.56%	23.98	232.50	1074.90	9.91%	823.80	17.55%	0.06%	6.39%
KOTAKBANK	2050.00	5.50	0.27%	23.31	477.70	2301.90	10.94%	1602.45	27.93%	-6.44%	19.00%
LT	3621.00	-23.80	-0.65%	10.87	394.81	3963.50	8.64%	2965.30	22.11%	9.46%	-6.48%
M&M	3051.00	4.50	0.15%	15.85	485.13	3270.95	6.72%	2425.00	25.81%	4.11%	15.66%
MARUTI	12188.00	60.00	0.49%	2.06	250.79	13680.00	10.91%	10725.00	13.64%	-2.24%	-2.79%
NESTLEIND	2396.00	4.60	0.19%	5.87	140.75	2778.00	13.75%	2110.00	13.55%	2.30%	1.54%
NTPC	329.00	0.75	0.23%	156.53	512.68	448.45	26.64%	292.80	12.36%	-5.80%	-16.22%
ONGC	237.58	0.31	0.13%	67.26	159.49	345.00	31.14%	205.00	15.89%	-2.53%	-16.48%
POWERGRID	288.90	0.65	0.23%	85.80	247.66	366.25	21.12%	247.30	16.82%	-5.17%	-14.63%
RELIANCE	1421.00	15.50	1.10%	81.26	1150.52	1608.80	11.67%	1114.85	27.46%	-1.19%	-53.47%
SBILIFE	1773.50	-1.80	-0.10%	9.19	162.70	1936.00	8.39%	1307.70	35.62%	0.60%	27.58%
SBIN	805.50	-4.30	-0.53%	96.06	776.94	912.00	11.68%	680.00	18.46%	1.22%	-10.58%
SHRIRAMFIN	642.05	-6.20	-0.96%	62.90	408.19	730.45	12.10%	438.60	46.39%	7.29%	-74.16%
SUNPHARMA	1664.00	-3.50	-0.21%	17.00	282.59	1960.35	15.12%	1377.20	20.82%	-8.85%	14.76%
TATACONSUM	1125.90	11.30	1.01%	6.36	71.36	1250.10	9.94%	882.90	27.52%	-3.65%	4.25%
TATAMOTORS	710.25	12.40	1.78%	112.87	800.16	1179.00	39.76%	535.75	32.57%	7.95%	-25.95%
TATASTEEL	158.40	1.05	0.67%	166.51	263.10	184.60	14.19%	122.62	29.18%	11.45%	-9.70%
TCS	3381.00	5.80	0.17%	25.44	860.66	4592.25	26.38%	3056.05	10.63%	-1.15%	-8.04%
TECHM	1561.80	18.00	1.17%	14.39	224.24	1807.70	13.60%	1193.65	30.84%	3.17%	23.97%
TITAN	3498.70	-21.10	-0.60%	4.10	143.67	3867.00	9.52%	2925.00	19.61%	5.35%	7.93%
TRENT	5510.00	-80.00	-1.43%	7.49	413.46	8345.00	33.97%	4196.00	31.32%	8.59%	19.90%
ULTRACEMCO	11038.00	3.00	0.03%	3.45	379.55	12339.00	10.54%	9534.95	15.76%	-5.23%	5.40%
WIPRO	247.05	0.83	0.34%	66.98	165.72	324.60	23.89%	208.50	18.49%	1.38%	-44.56%
ETERNAL	245.33	7.63	3.21%	706.02	1716.91	304.70	19.48%	146.30	67.69%	1.46%	#VALUE!

Disclaimer / Disclosures

ANALYST CERTIFICATION

I, Mrs. Vaishali Parekh B.com, Research Analyst, author and the name subscribed to this report, hereby certify that all of the views expressed in this research report accurately reflect our views about the subject issuer(s) or securities. We also certify that no part of our compensation was, is, or will be directly or indirectly related to the specific recommendation(s) or view(s) in this report.

Terms & conditions and other disclosures:

Prabhudas Lilladher Pvt. Ltd, Mumbai, India (hereinafter referred to as "PL") is engaged in the business of Stock Broking, Portfolio Manager, Depository Participant and distribution for third party financial products. PL is a subsidiary of Prabhudas Lilladher Advisory Services Pvt Ltd. which has its various subsidiaries engaged in business of commodity broking, investment banking, financial services (margin funding) and distribution of third party financial/other products, details in respect of which are available at www.plindia.com

This document has been prepared by the Research Division of PL and is meant for use by the recipient only as information and is not for circulation. This document is not to be reported or copied or made available to others without prior permission of PL. It should not be considered or taken as an offer to sell or a solicitation to buy or sell any security.

The information contained in this report has been obtained from sources that are considered to be reliable. However, PL has not independently verified the accuracy or completeness of the same. Neither PL nor any of its affiliates, its directors or its employees accepts any responsibility of whatsoever nature for the information, statements and opinion given, made available or expressed herein or for any omission therein.

Recipients of this report should be aware that past performance is not necessarily a guide to future performance and value of investments can go down as well. The suitability or otherwise of any investments will depend upon the recipient's particular circumstances and, in case of doubt, advice should be sought from an independent expert/advisor.

Either PL or its affiliates or its directors or its employees or its representatives or its clients or their relatives may have position(s), make market, act as principal or engage in transactions of securities of companies referred to in this report and they may have used the research material prior to publication.

PL may from time to time solicit or perform investment banking or other services for any company mentioned in this document.

PL is registered as Research Analyst under Securities and Exchange Board of India (Research Analysts) Regulations, 2014 PL submits that no material disciplinary action has been taken on us by any Regulatory Authority impacting Equity Research Analysis activities.

PL or its research analysts or its associates or his relatives do not have any financial interest in the subject company.

PL or its research analysts or its associates or his relatives do not have actual/beneficial ownership of one per cent or more securities of the subject company at the end of the month immediately preceding the date of publication of the research report.

PL or its research analysts or its associates or his relatives do not have any material conflict of interest at the time of publication of the research report.

PL or its associates might have received compensation from the subject company in the past twelve months.

PL or its associates might have managed or co-managed public offering of securities for the subject company in the past twelve months or mandated by the subject company for any other assignment in the past twelve months.

PL or its associates might have received any compensation for investment banking or merchant banking or brokerage services from the subject company in the past twelve months.

PL or its associates might have received any compensation for products or services other than investment banking or merchant banking or brokerage services from the subject company in the past twelve months PL or its associates might have received any compensation or other benefits from the subject company or third party in connection with the research report.

PL encourages independence in research report preparation and strives to minimize conflict in preparation of research report. PL or its analysts did not receive any compensation or other benefits from the subject Company or third party in connection with the preparation of the research report. PL or its Research Analysts do not have any material conflict of interest at the time of publication of this report.

It is confirmed that Mrs.Vaishali Parekh B.com, Research Analyst of this report has not received any compensation from the companies mentioned in the report in the preceding twelve months compensation of our Research Analysts is not based on any specific merchant banking, investment banking or brokerage service transactions.

The Research analysts for this report certifies that all of the views expressed in this report accurately reflect his or her personal views about the subject company or companies and its or their securities, and no part of his or her compensation was, is or will be, directly or indirectly related to specific recommendations or views expressed in this report.

The research analysts for this report has not served as an officer, director or employee of the subject company PL or its research analysts have not engaged in market making activity for the subject company

Our sales people, traders, and other professionals or affiliates may provide oral or written market commentary or trading strategies to our clients that reflect opinions that are contrary to the opinions expressed herein, and our proprietary trading and investing businesses may make investment decisions that are inconsistent with the recommendations expressed herein. In reviewing these materials, you should be aware that any or all of the foregoing, among other things, may give rise to real or potential conflicts of interest.

PL and its associates, their directors and employees may (a) from time to time, have a long or short position in, and buy or sell the securities of the subject company or (b) be engaged in any other transaction involving such securities and earn brokerage or other compensation or act as a market maker in the financial instruments of the subject company or act as an advisor or lender/borrower to the subject company or may have any other potential conflict of interests with respect to any recommendation and other related information and opinions.