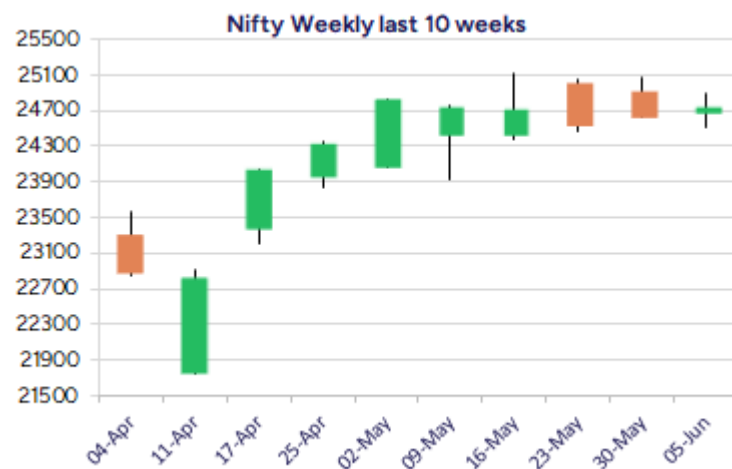
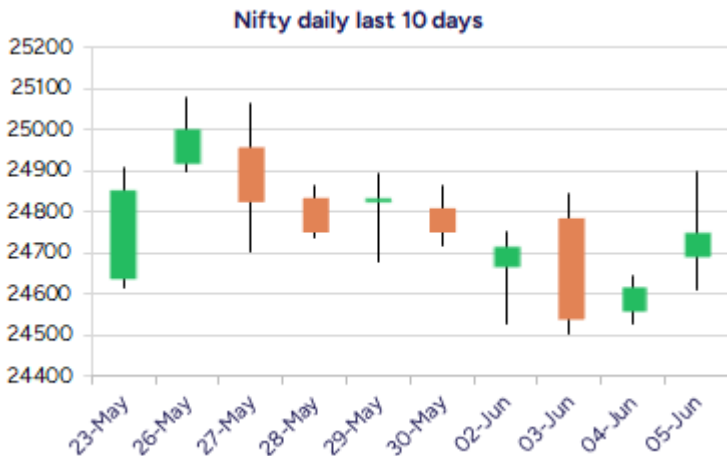


* Sensex 81442.04 + 443.79

* Nifty 24750.90 + 130.70

* Bank Nifty 55760.85 + 84.00



*Blue candle → Close rate > Open rate * Red candle → Close rate < Open rate

Market Preview

Nifty ends near 24750 zone

Nifty witnessed a volatile session hitting the high near 24900 zone and closed near the 24750 level with bias overall maintained positive. BankNifty continue to remain sluggish with the RBI Policy outcome awaited and a decisive breach above the 55800-56000 zone is much required to anticipate for a breakout. The market breadth was strong with the advance decline indicating a ratio of 3:2 at close.

Market Forecast

Nifty daily range 24600-25000

Nifty witnessed a highly volatile session with huge fluctuations taking the index to touch 24900 level during the intraday session but ended near the 24750 zone with profit booking happening during the post lunch session. Market players are awaiting the RBI Policy outcome which can triggered for further fluctuations and having the important support near 24500 zone which needs to be sustained, the index needs to breach above the tough hurdle near the 25000 levels and thereafter expect for fresh upward move in the coming days.

BankNifty, amid the volatility failed to cross above the 56000 zone and closed almost on a flat note near the 55750 zone with anticipation of a positive outcome from the RBI Policy announcement. As said earlier, the index needs a decisive breach above the 55800 zone to give a breakout above the tight range and expect for fresh move on the upside and at the same time needs to sustain above the crucial support of 54500 level to maintain the overall bias intact.

The support for the day is seen at 24600 levels while the resistance is seen at 25000 levels. BankNifty would have the daily range of 55300-56200 levels.

Indices	Period	Closing	% Chng	Trend	Reversal	2 Sup	1 Sup	Pivot	1 Res	2 Res
Nifty	Daily	24750.90	0.53%	1	24728.40	24468	24609	24755	24896	25041
	Weekly	24750.70	-0.41%	11	24617.50	24438	24595	24837	24993	25235
	Monthly	24750.70	1.71%	1	24390.40	23422	24086	24600	25265	25779
Bank Nifty	Daily	55760.85	0.15%	1	55759.55	55354	55557	55784	55987	56214
	Weekly	55749.70	0.63%	3	55559.45	54724	55237	55555	56068	56386
	Monthly	55749.70	1.20%	2	53879.10	52648	54199	55036	56587	57424
Sensex	Daily	81442.04	0.55%	1	81335.20	80518	80980	81446	81908	82373
	Weekly	81451.01	-0.33%	11	81091.35	80302	80876	81684	82259	83067
	Monthly	81451.01	1.51%	1	80320.40	77296	79374	81046	83123	84796

Daily Trend turned Up			
Scrip Name	LCP	Curr Trnd	Reversal
AUROPHARMA	1159.5	-12	1147.1
GRASIM	2554.4	-13	2546.65
HAL	5071.6	-12	5033.65
HDFCAMC	4885.8	-4	4861.6
HINDUNILVR	2376.4	-2	2364.7
ICICIBANK	1454.8	-4	1450.4
JMFINANCIL	141.62	-2	133.55
JUSTDIAL	899.5	-12	887.75
LUPINLTD	1995.2	-2	1950.9
POWERGRID	294.25	-2	289.9
TATACOMM	1713.1	-4	1689.4
TRENT	5673	-2	5629.2

* Trends turned Up after a significant period

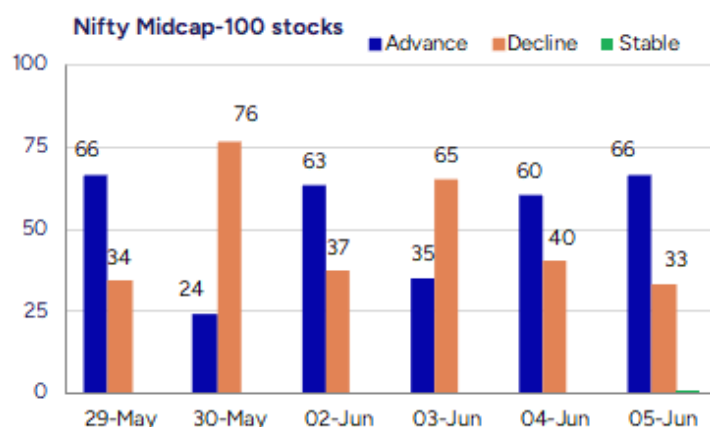
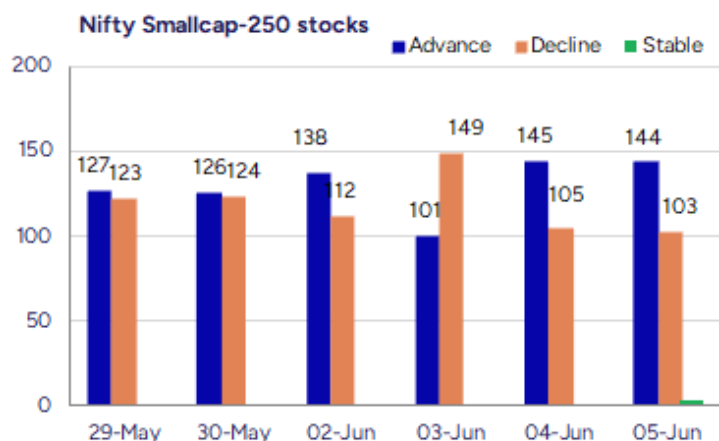
Daily Trend turned Down			
Scrip Name	LCP	Curr Trnd	Reversal
AUBANK	720.05	3	721.35
BANKBARODA	250.64	17	251.65
BIOCON	330.6	2	335.75
CANBK	116.38	7	116.55
CHAMBLFERT	552.6	2	559.15
FEDERALBNK	207.07	3	207.75
HUDCO	241.94	8	245.55
IBULHSGFIN	122.5	2	123.2
IEX	199.33	5	201.1
METROPOLIS	1680.8	8	1687.2
PIDILITIND	3053.2	5	3075.6
SIEMENS	3280.5	2	3313.75

* Trends turned Down after a significant period

Gainers - Losers (Nifty 500 Stocks)

Gainers			
Company Name	Last Price	% Gain	Volume
Oricon Ent	48.84	20	3824585
Peria Karamalai	882.5	19.99	27754
Sree Rayalaseem	654.95	16.59	726071
Bharat Wire Rop	222.65	16.11	3765503
Rachana Infra	51.1	14.96	476600
Hariom Pipe	434.35	13.16	1892392
Avantel	181.43	13.09	22850100

Losers			
Company Name	Last Price	% Loss	Volume
Uma Exports	59.94	-8.24	1558685
NRB Industrial	30.96	-8.02	164378
Servotech Renew	152.63	-6.98	4416030
Kundan Edifice	122.75	-6.3	13200
DUGLOBAL	48.45	-5.46	32500
Greenchef Appli	65.25	-5.37	8000
Navkar Urban.	2.16	-5.26	3378816



Nifty Daily chart with RSI indicator



BankNifty Daily chart with RSI indicator



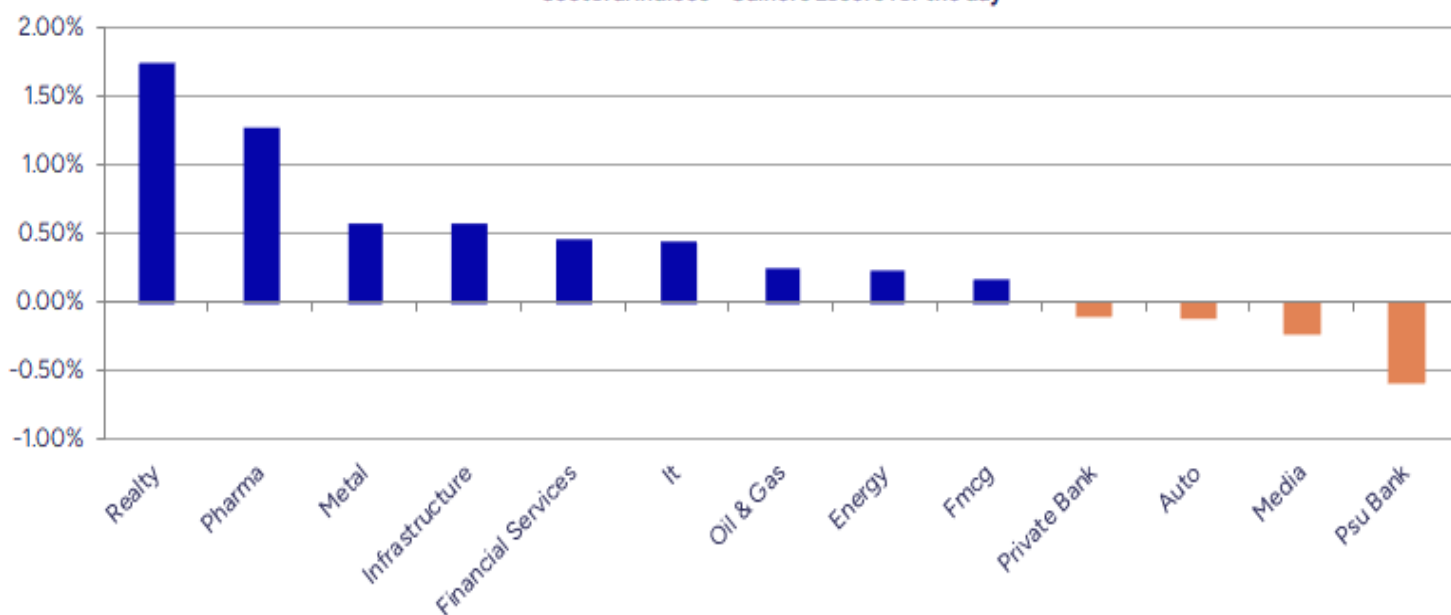
Breakouts - Cross above 200 DMA			
Company Name	LCP	Change %	200 DMA
Rama Steel Tube	13.2	11.02	11.89
DCX Systems	326.5	5.53	309.39
Xpro India	1275.2	5.10	1213.36
Bharat Wire Rop	222.65	4.77	212.52
Hind Zinc	491.6	4.77	469.23
Megastar Foods	254.45	4.22	244.14
AZZ Infra Eng	18.59	3.85	17.9
Suprajit Eng	471.25	3.82	453.93
Pilani Invest	5232.3	3.81	5040.5
Eternal	256.56	3.36	248.22
Bliss GVS	139.54	3.29	135.09
IBL Finance	60.75	3.18	58.88
Glenmark	1584.8	3.18	1535.96
D.K. Enterprise	73.8	2.94	71.69
Dr Reddys Labs	1290.6	2.85	1254.78
Mohini Health &	60.5	2.82	58.84
Sree Rayalaseem	654.95	2.79	637.18
360 ONE WAM	1074	2.52	1047.62

* Stocks crossing above its Simple Moving Average (200DMA)

Breakdown - Cross below 200 DMA			
Company Name	LCP	Change %	200 DMA
Universal Cable	597.3	-3.31	617.73
Talbros Auto	287.6	-1.73	292.66
Dharmaj Crop	264.19	-1.49	268.19
Concord Biotech	1850.7	-1.32	1875.38
Rushil Decor	29.93	-1.25	30.31
Optiemus Infra	599.4	-1.06	605.83
Godrej Consumer	1214.9	-0.95	1226.52
Brooks Labs	138.52	-0.94	139.84
Hikal	374.7	-0.86	377.96
Bandhan Bank	166.86	-0.81	168.23
Linc	141.41	-0.67	142.36
Fedbank Financi	100.9	-0.66	101.57
Aspinwall	281.55	-0.65	283.4
SMS Lifescience	1286.8	-0.61	1294.65
CMS Info System	494.95	-0.49	497.38
Zydus Wellness	1889.6	-0.42	1897.5
Honda India PP	2907	-0.29	2915.55
Bayer CropScien	5575	-0.24	5588.24

* Stocks crossing below its Simple Moving Average (200DMA)

Sectoral Indices - Gainers Losers for the day



Stocks witnessing a volume surge as compared to their 5 day average volume

Watch out for the stocks that have seen a huge spurt in its share price over the last three days

Volume Shockers - NSE					
Company name	LCP	% Chg	Volume	Avg Vol *	% Chg
Diamond Power	107.7	-0.07	9879459	6800	145178
Exxaro	9.37	4.34	3629377	51457	6953
Sheela Foam	656.1	4.74	1748097	37992	4501
Avantel	181.43	13.09	22848315	538541	4143
AstraZeneca	988.4	4.11	267735	7428	3505
Newgen Software	1224.4	-0.01	4123620	114472	3502
Brainbees Solu	399.4	9.54	36715144	1056728	3374
Laxmi Goldorna	571.6	-0.24	36850	1094	3269
Paras Defence	1724.7	6.23	2344645	74764	3036
Puravankara	306.9	10	1591637	51595	2985
Data Patterns	3171.3	6.23	2897538	106334	2625
Atal	15.63	1.03	2231911	100889	2112
PNC Infratech	299	4.84	16538493	766040	2059
Cochin Shipyard	2350.8	12.66	23860672	1166511	1945
Sree Rayalaseem	654.95	16.59	725970	36320	1899
Premier Explo	608.1	2	1433259	77069	1760
Krishival Foods	332.55	4.99	22000	1200	1733
Sky Gold	381	-0.09	471422	25989	1714
Motor and Gen F	26.67	2.66	551591	30733	1695
Remsons Ind	148.9	3.85	376831	21094	1686

* the Average Volume of last 5 days

Price Shockers - NSE				
Company name	LCP	Prv Close	% Chg	Volume
Welspun Invest	1186.4	937.4	26.56	49406
Puravankara	306.9	243.3	26.14	1592293
Servotech Renew	152.63	123.34	23.75	4417155
Cochin Shipyard	2350.8	1923	22.25	23863003
Quick Heal Tech	364.85	298.9	22.06	3830664
Krishna Defence	942.75	774.25	21.76	243250
Sree Rayalaseem	654.95	538.6	21.6	726071
Premium Plast	41.7	34.45	21.04	42000
Deem Roll Tech	65.95	54.95	20.02	5000
Avantel	181.43	151.43	19.81	22851956
Peria Karamalai	882.5	742.7	18.82	27754
Suraj Estate	380.15	320.9	18.46	1025218
Ind-Swift Labs	97.08	82.1	18.25	1070977
Phantom Digital	261.25	221.8	17.79	65100
Oricon Ent	48.84	41.48	17.74	3824585
Bharat Wire Rop	222.65	191.58	16.22	3765503
Focus Lighting	104.19	90.01	15.75	250686
Ujaas Energy	328.9	284.15	15.75	218
Oil Country	81.08	70.05	15.75	43225
HMT	71.9	62.12	15.74	83006

* the % price rise of the last 3 days

Symbol	LTP	Chng	% Chng	Volume (lacs)	Turnover (crs.)	52w High	Diff with 52w H	52w Low	Diff with 52w L	365 days % chng	30 days % chng
NIFTY 50	24750.90	130.70	0.53%	3883.96	30185.43	26277.35	5.81%	21743.65	13.83%	0.65%	12.50%
ADANIANT	2510.00	20.60	0.83%	6.73	169.01	3520.00	28.69%	2025.00	23.95%	1.38%	-15.36%
ADANIPTS	1453.00	16.80	1.17%	20.20	294.12	1604.95	9.47%	995.65	45.93%	6.61%	14.99%
APOLLOHOSP	6893.00	38.00	0.55%	4.89	336.49	7545.35	8.65%	5693.20	21.07%	-1.71%	17.27%
ASIANPAINT	2242.00	-7.00	-0.31%	9.96	223.61	3394.90	33.96%	2124.75	5.52%	-7.71%	-21.30%
AXISBANK	1160.00	-11.00	-0.94%	104.82	1219.33	1339.65	13.41%	933.50	24.26%	-0.19%	3.51%
BAJAJ-AUTO	8563.50	-	#VALUE!	3.82	326.80	12774.00	32.96%	7089.35	20.79%	8.12%	-7.39%
BAJAJFINSV	1944.90	-11.20	-0.57%	18.08	351.61	2135.00	8.90%	1419.05	37.06%	-3.46%	32.41%
BAJFINANCE	8925.00	-62.00	-0.69%	7.85	701.12	9660.00	7.61%	6375.70	39.98%	0.62%	38.06%
BEL	394.10	3.50	0.90%	207.46	812.95	394.70	0.15%	230.00	71.35%	23.88%	52.85%
BHARTIARTL	1878.00	2.60	0.14%	90.00	1686.79	1917.00	2.03%	1219.05	54.05%	0.50%	44.29%
CIPLA	1490.00	18.10	1.23%	15.70	234.02	1702.05	12.46%	1335.00	11.61%	-4.60%	0.64%
COALINDIA	395.10	0.50	0.13%	60.97	240.78	543.55	27.31%	349.25	13.13%	2.33%	-10.70%
DRREDDY	1290.10	38.20	3.05%	38.35	494.26	1421.49	9.24%	1020.00	26.48%	6.88%	-78.15%
EICHERMOT	5304.00	-15.50	-0.29%	4.60	244.31	5906.50	10.20%	4253.85	24.69%	-2.58%	18.33%
GRASIM	2556.00	6.30	0.25%	9.51	244.65	2877.75	11.18%	2171.60	17.70%	-7.46%	13.00%
HCLTECH	1632.30	6.20	0.38%	14.09	230.33	2012.20	18.88%	1235.00	32.17%	3.67%	24.74%
HDFCBANK	1952.00	10.80	0.56%	111.28	2170.04	1978.90	1.36%	1454.00	34.25%	0.23%	30.88%
HDFCLIFE	761.00	2.20	0.29%	16.39	124.80	791.10	3.80%	511.40	48.81%	2.69%	41.98%
HEROMOTOCO	4177.00	-23.60	-0.56%	3.95	165.70	6246.25	33.13%	3344.00	24.91%	11.49%	-20.90%
HINDALCO	638.00	2.15	0.34%	35.66	227.19	772.65	17.43%	546.45	16.75%	0.39%	-2.03%
HINDUNILVR	2376.00	11.50	0.49%	17.88	423.98	3035.00	21.71%	2136.00	11.24%	0.68%	-5.28%
ICICIBANK	1456.30	25.30	1.77%	113.86	1649.52	1471.60	1.04%	1051.05	38.56%	0.11%	33.56%
INDUSINDBK	803.05	-11.30	-1.39%	33.66	271.38	1550.00	48.19%	606.00	32.52%	-3.83%	-41.48%
INFY	1554.50	3.30	0.21%	69.49	1080.34	2006.45	22.52%	1307.00	18.94%	2.82%	11.30%
ITC	419.45	2.45	0.59%	132.12	553.02	528.50	20.63%	390.15	7.51%	-4.57%	0.43%
JIOFIN	291.10	0.75	0.26%	118.66	345.80	368.30	20.96%	198.65	46.54%	11.42%	-12.79%
JSWSTEEL	970.60	2.05	0.21%	21.83	211.63	1074.90	9.70%	823.80	17.82%	1.37%	15.05%
KOTAKBANK	2038.70	-7.60	-0.37%	37.25	761.10	2301.90	11.43%	1602.45	27.22%	-1.85%	24.93%
LT	3641.20	14.70	0.41%	14.66	534.84	3963.50	8.13%	2965.30	22.79%	8.90%	6.56%
M&M	3045.00	-8.40	-0.28%	35.05	1068.68	3270.95	6.91%	2425.00	25.57%	1.06%	18.68%
MARUTI	12132.00	-31.00	-0.25%	3.20	387.42	13680.00	11.32%	10725.00	13.12%	-2.37%	-0.11%
NESTLEIND	2400.00	2.50	0.10%	7.34	175.90	2778.00	13.61%	2110.00	13.74%	2.98%	-1.25%
NTPC	328.60	-0.65	-0.20%	162.70	535.89	448.45	26.73%	292.80	12.23%	-5.55%	-0.60%
ONGC	238.20	0.15	0.06%	89.41	212.54	345.00	30.96%	205.00	16.20%	-0.48%	0.74%
POWERGRID	294.35	5.80	2.01%	131.10	385.20	366.25	19.63%	247.30	19.03%	-6.38%	-2.50%
RELIANCE	1442.70	19.20	1.35%	137.16	1978.79	1608.80	10.32%	1114.85	29.41%	-0.54%	-49.06%
SBILIFE	1775.00	-0.90	-0.05%	9.12	162.18	1936.00	8.32%	1307.70	35.73%	0.34%	32.64%
SBIN	806.80	0.30	0.04%	135.95	1096.84	899.00	10.26%	680.00	18.65%	2.09%	4.04%
SHRIRAMFIN	650.40	9.20	1.43%	45.42	294.24	730.45	10.96%	438.60	48.29%	1.96%	-71.64%
SUNPHARMA	1681.00	16.10	0.97%	20.37	342.38	1960.35	14.25%	1377.20	22.06%	-9.35%	16.44%
TATACONSUM	1112.40	-12.00	-1.07%	10.45	116.67	1250.10	11.02%	882.90	25.99%	-3.19%	3.44%
TATAMOTORS	710.10	0.95	0.13%	102.03	723.38	1179.00	39.77%	535.75	32.54%	7.20%	-21.55%
TATASTEEL	158.05	-0.13	-0.08%	237.08	374.42	184.60	14.38%	122.62	28.89%	11.33%	-0.48%
TCS	3374.00	-6.90	-0.20%	35.84	1211.66	4592.25	26.53%	3056.05	10.40%	-2.12%	-8.99%
TECHM	1562.00	5.30	0.34%	15.29	238.62	1807.70	13.59%	1193.65	30.86%	4.15%	25.61%
TITAN	3502.40	2.60	0.07%	6.09	213.32	3867.00	9.43%	2925.00	19.74%	5.36%	8.05%
TRENT	5680.00	173.50	3.15%	12.13	685.74	8345.00	31.94%	4196.00	35.37%	2.53%	21.34%
ULTRACEMCO	11180.00	147.00	1.33%	1.91	212.86	12339.00	9.39%	9534.95	17.25%	-5.46%	11.24%
WIPRO	248.20	1.34	0.54%	64.68	160.36	324.60	23.54%	208.50	19.04%	1.35%	-43.66%
ETERNAL	256.80	11.12	4.53%	1277.93	3278.78	304.70	15.72%	146.30	75.53%	2.41%	#VALUE!

Disclaimer / Disclosures

ANALYST CERTIFICATION

I, Mrs. Vaishali Parekh B.com, Research Analyst, author and the name subscribed to this report, hereby certify that all of the views expressed in this research report accurately reflect our views about the subject issuer(s) or securities. We also certify that no part of our compensation was, is, or will be directly or indirectly related to the specific recommendation(s) or view(s) in this report.

Terms & conditions and other disclosures:

Prabhudas Lilladher Pvt. Ltd, Mumbai, India (hereinafter referred to as "PL") is engaged in the business of Stock Broking, Portfolio Manager, Depository Participant and distribution for third party financial products. PL is a subsidiary of Prabhudas Lilladher Advisory Services Pvt Ltd. which has its various subsidiaries engaged in business of commodity broking, investment banking, financial services (margin funding) and distribution of third party financial/other products, details in respect of which are available at www.plindia.com

This document has been prepared by the Research Division of PL and is meant for use by the recipient only as information and is not for circulation. This document is not to be reported or copied or made available to others without prior permission of PL. It should not be considered or taken as an offer to sell or a solicitation to buy or sell any security.

The information contained in this report has been obtained from sources that are considered to be reliable. However, PL has not independently verified the accuracy or completeness of the same. Neither PL nor any of its affiliates, its directors or its employees accepts any responsibility of whatsoever nature for the information, statements and opinion given, made available or expressed herein or for any omission therein.

Recipients of this report should be aware that past performance is not necessarily a guide to future performance and value of investments can go down as well. The suitability or otherwise of any investments will depend upon the recipient's particular circumstances and, in case of doubt, advice should be sought from an independent expert/advisor.

Either PL or its affiliates or its directors or its employees or its representatives or its clients or their relatives may have position(s), make market, act as principal or engage in transactions of securities of companies referred to in this report and they may have used the research material prior to publication.

PL may from time to time solicit or perform investment banking or other services for any company mentioned in this document.

PL is registered as Research Analyst under Securities and Exchange Board of India (Research Analysts) Regulations, 2014 PL submits that no material disciplinary action has been taken on us by any Regulatory Authority impacting Equity Research Analysis activities.

PL or its research analysts or its associates or his relatives do not have any financial interest in the subject company.

PL or its research analysts or its associates or his relatives do not have actual/beneficial ownership of one per cent or more securities of the subject company at the end of the month immediately preceding the date of publication of the research report.

PL or its research analysts or its associates or his relatives do not have any material conflict of interest at the time of publication of the research report.

PL or its associates might have received compensation from the subject company in the past twelve months.

PL or its associates might have managed or co-managed public offering of securities for the subject company in the past twelve months or mandated by the subject company for any other assignment in the past twelve months.

PL or its associates might have received any compensation for investment banking or merchant banking or brokerage services from the subject company in the past twelve months.

PL or its associates might have received any compensation for products or services other than investment banking or merchant banking or brokerage services from the subject company in the past twelve months PL or its associates might have received any compensation or other benefits from the subject company or third party in connection with the research report.

PL encourages independence in research report preparation and strives to minimize conflict in preparation of research report. PL or its analysts did not receive any compensation or other benefits from the subject Company or third party in connection with the preparation of the research report. PL or its Research Analysts do not have any material conflict of interest at the time of publication of this report.

It is confirmed that Mrs.Vaishali Parekh B.com, Research Analyst of this report has not received any compensation from the companies mentioned in the report in the preceding twelve months compensation of our Research Analysts is not based on any specific merchant banking, investment banking or brokerage service transactions.

The Research analysts for this report certifies that all of the views expressed in this report accurately reflect his or her personal views about the subject company or companies and its or their securities, and no part of his or her compensation was, is or will be, directly or indirectly related to specific recommendations or views expressed in this report.

The research analysts for this report has not served as an officer, director or employee of the subject company PL or its research analysts have not engaged in market making activity for the subject company

Our sales people, traders, and other professionals or affiliates may provide oral or written market commentary or trading strategies to our clients that reflect opinions that are contrary to the opinions expressed herein, and our proprietary trading and investing businesses may make investment decisions that are inconsistent with the recommendations expressed herein. In reviewing these materials, you should be aware that any or all of the foregoing, among other things, may give rise to real or potential conflicts of interest.

PL and its associates, their directors and employees may (a) from time to time, have a long or short position in, and buy or sell the securities of the subject company or (b) be engaged in any other transaction involving such securities and earn brokerage or other compensation or act as a market maker in the financial instruments of the subject company or act as an advisor or lender/borrower to the subject company or may have any other potential conflict of interests with respect to any recommendation and other related information and opinions.