

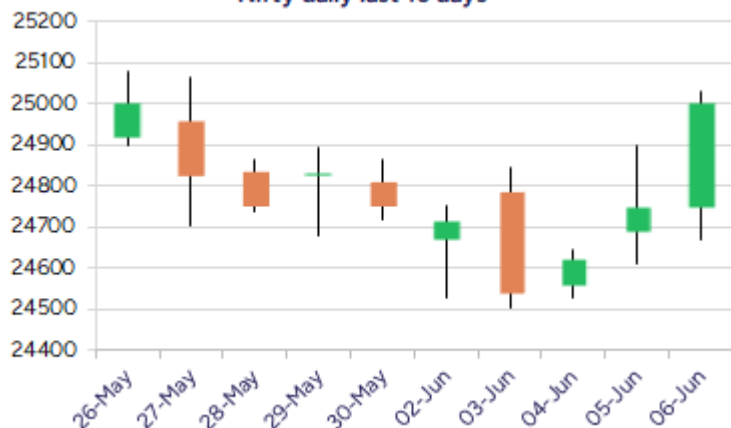
Date: 09th June 2025

* Sensex 82188.99 + 746.95

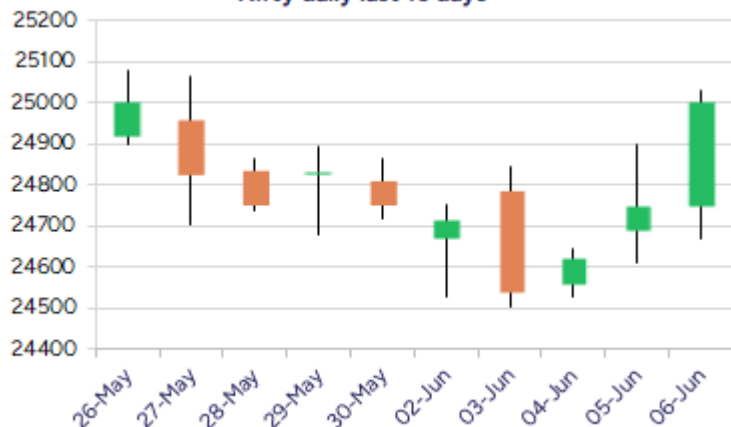
* Nifty 25003.05 + 252.15

* Bank Nifty 56578.40 + 817.55

Nifty daily last 10 days



Nifty daily last 10 days



*Blue candle → Close rate > Open rate * Red candle → Close rate < Open rate

Market Preview

Nifty ends on a strong note above 25000 zone

Nifty witnessed a strong move post the RBI policy outcome to close above the 25000 zone with overall bias maintained strong and anticipating for further rise in the coming days. BankNifty indicated a clear breakout above the 56000 hurdle and with strength indicated can proceed further upward in the coming days with fresh upside targets anticipated. The market breadth was strong with the advance decline indicating a ratio of 3:2 at close.

Market Forecast

Nifty daily range 24800-25300

Nifty indicated a strong bullish candle on the daily chart post the RBI Policy outcome which boosted the overall sentiment of the market players and closed on a strong note above the 25000 level to anticipate for further rise in the coming days. The index has gained strength with most of the frontline stocks indicating a positive revival to expect for further gains and once the recent peak of 25116 zone is breached decisively, one can expect for fresh targets of 25600 and 26000 levels in the coming days.

BankNifty, gave a strong breakout above the tough resistance of 55800-56000 zone with a bullish candle formation on the daily chart to enter a new territory and can expect for further upward movement in the coming days. The index has overall strengthened the trend further with most of the PSU Banks also beginning to participate in the rally to support the benchmark index and can anticipate for fresh upside targets of 57700 and 60000 levels in the coming days.

The support for the day is seen at 24800 levels while the resistance is seen at 25300 levels. BankNifty would have the daily range of 56000-57300 levels.

Indices	Period	Closing	% Chng	Trend	Reversal	2 Sup	1 Sup	Pivot	1 Res	2 Res
Nifty	Daily	25003.05	1.02%	2	24811.50	24543	24773	24901	25131	25259
	Weekly	25003.05	1.02%	12	24797.10	24320	24662	24845	25187	25371
	Monthly	24750.70	1.71%	1	24390.40	23422	24086	24600	25265	25779
Bank Nifty	Daily	56578.40	1.47%	2	56174.35	55109	55844	56269	57004	57430
	Weekly	56578.40	1.49%	4	56058.75	54933	55756	56225	57047	57516
	Monthly	55749.70	1.20%	2	53879.10	52648	54199	55036	56587	57424
Sensex	Daily	82188.99	0.92%	2	81589.10	80717	81453	81876	82613	83036
	Weekly	82188.99	0.91%	12	81629.70	79977	81083	81691	82797	83404
	Monthly	81451.01	1.51%	1	80320.40	77296	79374	81046	83123	84796

Daily Trend turned Up			
Scrip Name	LCP	Curr Trnd	Reversal
ABREL	2355.8	-5	2200.6
ADANIENT	2534.2	-5	2513.35
ADANIPOWER	555.25	-3	548.55
ARVIND	356.6	-16	352.65
ASHOKLEY	242.04	-11	237.25
AXISBANK	1194.6	-8	1184.1
BAJFINANCE	9371.5	-6	9076.9
BANDHANBNK	173.55	-3	171.2
CHOLAFIN	1593.2	-7	1565.15
EICHERMOT	5394	-5	5329.15
HAVELLS	1523.2	-7	1505.25
HINDALCO	650.15	-8	637.3

* Trends turned Up after a significant period

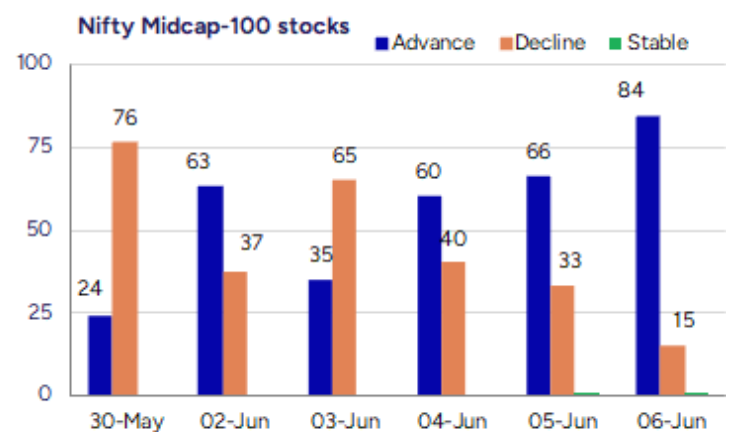
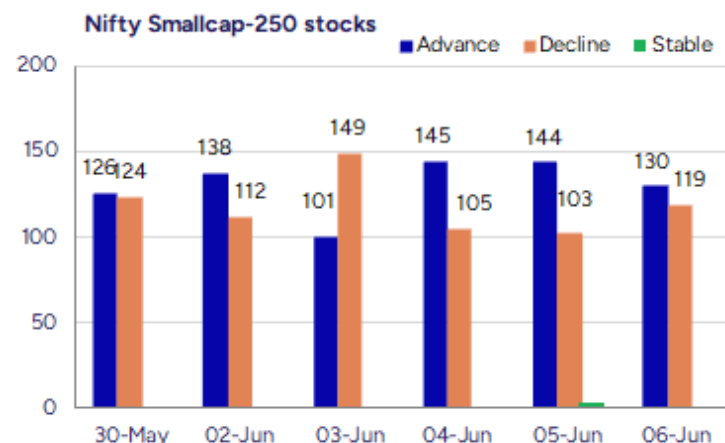
Daily Trend turned Up			
Scrip Name	LCP	Curr Trnd	Reversal
INDUSINDBK	822.85	-3	813.55
INDUSTOWER	391.1	-5	384.9
ITC	421.05	-8	417.65
JSWSTEELLTD	1004.9	-8	979.15
KOTMAHBNK	2073.4	-5	2052.15
MARUTI	12462	-13	12214.75
NATIONALUM	188.47	-8	182.65
NMDC	72.49	-7	71.15
PFCL	418.4	-5	408.2
RBLBANK	217.63	-3	214.2
TATAPOWER	399.55	-13	394.7
VEDL	448.05	-5	440.2

* Trends turned Up after a significant period

Gainers - Losers (Nifty 500 Stocks)

Gainers			
Company Name	Last Price	% Gain	Volume
Art Nirman	62.58	20	76898
Krebs Biochem	97.03	20	370730
Hybrid Fin Ser	15.66	20	127732
The Grob Tea	1196.75	20	6496
Wealth First Po	1075.35	20	48586
TVS Electronics	471.8	19.58	1305362
MIC Electronics	68.03	16.01	12657720

Losers			
Company Name	Last Price	% Loss	Volume
Privi Special	2289.8	-10.69	506378
Kalana Ispat	38.85	-7.61	94000
Regency Ceramic	42.14	-7.18	88157
Hitachi Energy	18203	-6.72	152949
Paramount Spec	41.2	-6.68	170000
Signpost India	189.47	-6.53	230680
Rachana Infra	47.85	-6.36	179100



Nifty Daily chart with RSI indicator



BankNifty Daily chart with RSI indicator



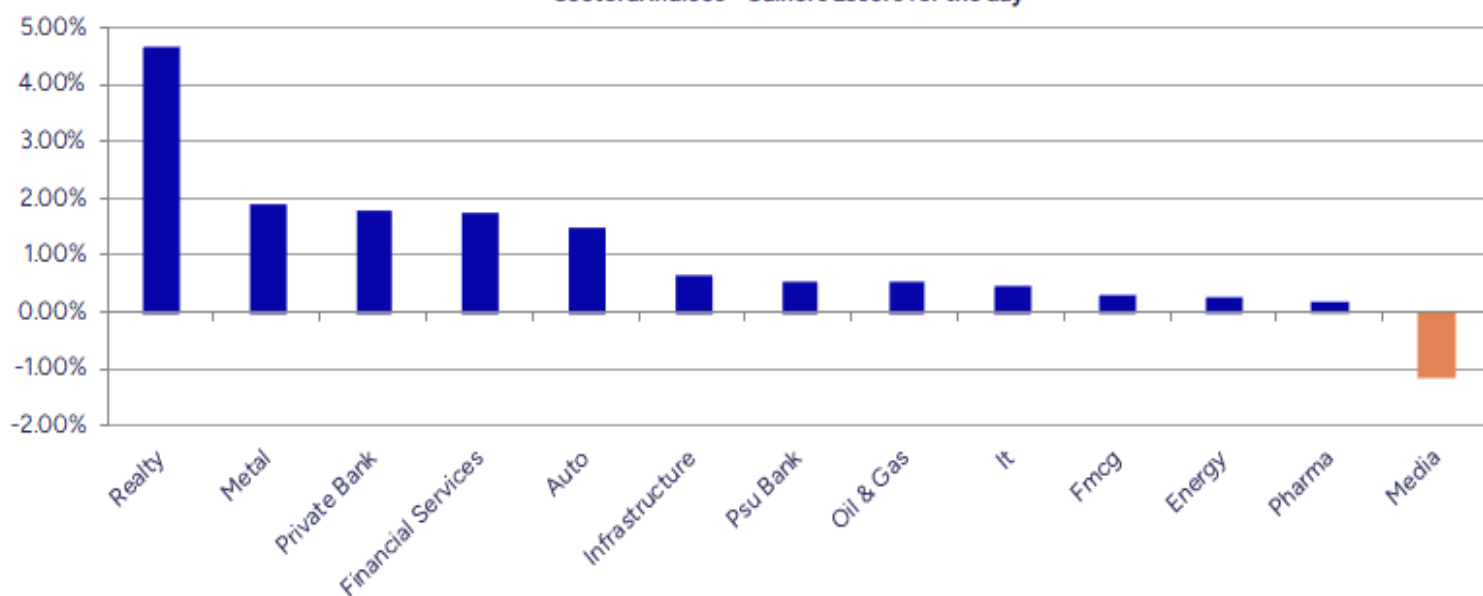
Breakouts - Cross above 200 DMA			
Company Name	LCP	Change %	200 DMA
The Grob Tea	1196.75	15.20	1038.81
Art Nirman	62.58	15.04	54.4
Krebs Biochem	97.03	12.92	85.93
Marine Electric	236.17	7.48	219.73
Digicontent	49.4	7.23	46.07
Nila Infra	12.64	7.12	11.8
Focus Lighting	114.6	6.59	107.51
Ajmera Realty	916.35	5.59	867.83
ICICI Lombard	2006.2	5.25	1906.2
HOV Services	69.63	4.98	66.33
Yatharth HOSP	539.8	4.43	516.9
Oberoi Realty	1908.2	4.42	1827.46
Univastu India	250.15	3.95	240.64
Phantom Digital	273.65	3.36	264.75
United Nilgiri	458.6	3.31	443.9
Bandhan Bank	173.55	3.24	168.11
JSW Steel	1004.9	3.22	973.59
Linc	146.53	2.95	142.33

* Stocks crossing above its Simple Moving Average (200DMA)

Breakdown - Cross below 200 DMA			
Company Name	LCP	Change %	200 DMA
Bang Overseas	56.03	-2.96	57.74
Thomas Cook	169.53	-2.64	174.12
D.K. Enterprise	69.9	-2.52	71.71
J G Chemicals	360.35	-2.50	369.58
SIL Invest	595.5	-2.09	608.24
Gokaldas Export	925.4	-1.65	940.94
ZIM Lab	99.96	-1.46	101.44
Bhageria Indu	189.44	-1.41	192.14
BLS Internation	398.65	-1.24	403.67
Vinyl Chemicals	326.4	-1.06	329.91
Tega Industries	1599.4	-0.89	1613.83
Jubilant Ing.	706.8	-0.71	711.85
ISGEC Heavy Eng	1242.2	-0.69	1250.82
Kronox Lab Scie	167.8	-0.53	168.69
Uniphos Ent	158.36	-0.49	159.14
J Kumar Infra	724.8	-0.47	728.23
CG Power	681.6	-0.44	684.61
Chambal Fert	540.05	-0.39	542.14

* Stocks crossing below its Simple Moving Average (200DMA)

Sectoral Indices - Gainers Losers for the day



Stocks witnessing a volume surge as compared to their 5 day average volume

Watch out for the stocks that have seen a huge spurt in its share price over the last three days

Volume Shockers - NSE					
Company name	LCP	% Chg	Volume	Avg Vol *	% Chg
Diamond Power	101.28	-5.96	21729154	6800	319428
Azad Eng	1649.7	-5.92	10510793	69963	14923
Krebs Biochem	97.03	20	370730	6498	5605
Shakti Pumps	939.8	5.49	2111093	38631	5365
Premier Explo	593.35	-2.43	3987356	77069	5074
Atal	16.65	6.53	3910103	100889	3776
Laxmi Goldorna	571.05	-0.1	41984	1094	3738
Art Nirman	62.58	20	76898	2051	3649
Puravankara	322.1	4.95	1805555	51595	3399
RamkrishnaForge	656.75	9.37	21564393	689797	3026
Arvind Smart	697.55	2.75	796466	25556	3017
Hercules Hoists	199.45	7.06	654556	21080	3005
MBL Infra	44.77	10.16	1981452	65421	2929
Neuland Lab	13030	10.95	539391	19392	2681
Krishival Foods	348.6	4.83	32500	1200	2608
Jai Balaji Ind	104.58	-1.27	1448738	54390	2564
Exxaro	9.12	-2.67	1340821	51457	2506
Remsons Ind	143.44	-3.67	493225	21094	2238
KCK Industries	39.8	4.74	305000	13600	2143
Destiny Logisti	82.05	4.99	133500	6000	2125

* the Average Volume of last 5 days

Price Shockers - NSE				
Company name	LCP	Prv Close	% Chg	Volume
Krebs Biochem	97.03	75.74	28.11	370730
Puravankara	322.1	253.65	26.99	1805555
Peria Karamalai	956.4	757.95	26.18	77435
Wealth First Po	1075.35	858.55	25.25	48586
Art Nirman	62.58	50.19	24.69	76898
Quick Heal Tech	367.55	300.25	22.41	1281626
Phantom Digital	273.65	224.25	22.03	90000
Hybrid Fin Ser	15.66	12.91	21.3	127732
Focus Lighting	114.6	94.51	21.26	886856
The Grob Tea	1196.75	1000.25	19.65	6496
Krishna Defence	964.5	810.25	19.04	220500
Bharat Wire Rop	223.22	187.75	18.89	1329082
Digicontent	49.4	41.57	18.84	86915
Manaksia Coated	126.66	107.21	18.14	537357
Hercules Hoists	199.45	168.99	18.02	654556
Premium Plast	42	35.6	17.98	294000
TVS Electronics	471.8	400.2	17.89	1305362
Cochin Shipyard	2392.5	2034.7	17.58	18533511
Onelife Capital	12.69	10.8	17.5	108154
Shradha Infra	71.65	61.28	16.92	100815

* the % price rise of the last 3 days

Symbol	LTP	Chng	% Chng	Volume (lacs)	Turnover (crs.)	52w High	Diff with 52w H	52w Low	Diff with 52w L	365 days % chng	30 days % chng
NIFTY 50	25003.05	252.15	1.02%	3355.76	30041.35	26277.35	4.85%	21743.65	14.99%	1.52%	9.42%
ADANIENT	2535.00	30.60	1.22%	6.41	162.41	3345.00	24.22%	2025.00	25.19%	6.39%	-19.61%
ADANIPTS	1469.00	12.30	0.84%	12.70	186.61	1604.95	8.47%	995.65	47.54%	10.29%	7.54%
APOLLOHOSP	6940.00	64.00	0.93%	2.69	185.71	7545.35	8.02%	5776.80	20.14%	-1.90%	15.86%
ASIANPAINT	2245.20	1.70	0.08%	8.22	184.55	3394.90	33.87%	2124.75	5.67%	-7.22%	-24.25%
AXISBANK	1195.50	36.50	3.15%	147.15	1741.61	1339.65	10.76%	933.50	28.07%	-0.21%	-2.15%
BAJAJ-AUTO	8655.00	97.50	1.14%	4.35	375.09	12774.00	32.25%	7089.35	22.08%	7.70%	-10.88%
BAJAJFINSV	1988.70	44.70	2.30%	69.70	1373.71	2135.00	6.85%	1472.90	35.02%	-4.51%	28.09%
BAJFINANCE	9372.00	438.00	4.90%	19.78	1834.01	9660.00	2.98%	6425.00	45.87%	1.55%	30.68%
BEL	390.90	-2.60	-0.66%	173.66	679.86	396.85	1.50%	230.00	69.96%	26.73%	51.14%
BHARTIARTL	1870.10	-8.70	-0.46%	46.44	870.58	1917.00	2.45%	1279.85	46.12%	-1.17%	39.76%
CIPLA	1504.30	14.50	0.97%	8.62	129.03	1702.05	11.62%	1335.00	12.68%	-1.43%	-0.48%
COALINDIA	398.75	3.85	0.97%	76.34	304.50	543.55	26.64%	349.25	14.17%	4.40%	-14.25%
DRREDDY	1319.70	29.10	2.25%	21.59	283.65	1421.49	7.16%	1020.00	29.38%	11.22%	-77.84%
EICHERMOT	5400.00	91.50	1.72%	5.38	288.22	5906.50	8.58%	4495.00	20.13%	-3.74%	15.93%
GRASIM	2570.00	15.60	0.61%	4.15	106.33	2877.75	10.69%	2182.15	17.77%	-6.39%	10.83%
HCLTECH	1638.00	5.60	0.34%	12.61	206.03	2012.20	18.60%	1302.75	25.73%	3.38%	21.49%
HDFCBANK	1978.00	28.40	1.46%	150.64	2976.59	1996.30	0.92%	1482.35	33.44%	0.93%	25.63%
HDFCLIFE	755.00	-6.60	-0.87%	12.15	91.89	791.10	4.56%	536.10	40.83%	5.40%	37.98%
HEROMOTOCO	4277.00	98.10	2.35%	5.51	234.41	6246.25	31.53%	3344.00	27.90%	7.91%	-26.15%
HINDALCO	649.70	12.45	1.95%	54.92	354.38	772.65	15.91%	546.45	18.89%	1.14%	-8.34%
HINDUNILVR	2389.00	12.60	0.53%	9.97	237.86	3035.00	21.29%	2136.00	11.84%	-0.23%	-8.70%
ICICIBANK	1460.00	5.20	0.36%	115.81	1685.75	1471.60	0.79%	1051.05	38.91%	1.62%	31.22%
INDUSINDBK	824.00	20.80	2.59%	109.17	899.99	1550.00	46.84%	606.00	35.97%	-3.44%	-46.49%
INFY	1568.00	13.70	0.88%	39.60	616.63	2006.45	21.85%	1307.00	19.97%	2.83%	8.68%
ITC	421.05	1.95	0.47%	87.75	368.86	528.50	20.33%	390.15	7.92%	-3.78%	-2.60%
JIOFIN	294.10	2.60	0.89%	158.57	467.08	368.30	20.15%	198.65	48.05%	16.04%	-15.65%
JSWSTEEL	1003.20	34.45	3.56%	20.90	208.60	1074.90	6.67%	829.15	20.99%	0.13%	10.29%
KOTAKBANK	2072.00	32.10	1.57%	44.24	913.07	2301.90	9.99%	1645.00	25.96%	-1.64%	18.73%
LT	3653.00	10.40	0.29%	11.73	428.50	3963.50	7.83%	2965.30	23.19%	9.26%	6.85%
M&M	3106.50	64.90	2.13%	20.28	623.74	3270.95	5.03%	2425.00	28.10%	-0.87%	10.97%
MARUTI	12463.00	337.00	2.78%	4.56	566.31	13680.00	8.90%	10725.00	16.21%	-3.62%	-3.01%
NESTLEIND	2413.30	12.00	0.50%	5.02	121.11	2778.00	13.13%	2110.00	14.37%	1.90%	-4.32%
NTPC	332.50	3.85	1.17%	114.02	377.98	448.45	25.86%	292.80	13.56%	-3.85%	-3.62%
ONGC	240.08	2.31	0.97%	59.85	143.15	345.00	30.41%	205.00	17.11%	0.32%	-3.93%
POWERGRID	295.50	1.25	0.42%	79.35	234.27	366.25	19.32%	247.30	19.49%	-4.34%	-1.52%
RELIANCE	1443.00	0.60	0.04%	81.82	1181.68	1608.80	10.31%	1114.85	29.43%	1.51%	-49.24%
SBILIFE	1777.80	3.00	0.17%	15.90	281.92	1936.00	8.17%	1330.70	33.60%	2.83%	27.67%
SBIN	812.65	6.65	0.83%	171.64	1393.48	899.00	9.61%	680.00	19.51%	4.12%	2.06%
SHRIRAMFIN	687.00	35.55	5.46%	201.15	1358.05	730.45	5.95%	446.00	54.04%	4.49%	-72.71%
SUNPHARMA	1680.90	-2.20	-0.13%	25.00	419.12	1960.35	14.26%	1432.00	17.38%	-7.48%	13.16%
TATACONSUM	1114.80	2.90	0.26%	5.03	56.15	1250.10	10.82%	882.90	26.27%	-3.76%	-2.67%
TATAMOTORS	711.60	1.45	0.20%	119.76	849.42	1179.00	39.64%	535.75	32.82%	9.56%	-23.64%
TATASTEEL	157.55	3.18	2.06%	258.03	403.48	184.60	14.65%	122.62	28.49%	9.37%	-6.64%
TCS	3388.00	16.90	0.50%	20.70	699.08	4592.25	26.22%	3056.05	10.86%	-2.57%	-10.02%
TECHM	1573.50	10.70	0.68%	8.28	129.88	1807.70	12.96%	1209.40	30.11%	4.45%	23.36%
TITAN	3561.90	57.90	1.65%	6.02	213.33	3867.00	7.89%	2925.00	21.77%	6.20%	5.62%
TRENT	5774.00	101.00	1.78%	10.35	594.75	8345.00	30.81%	4488.00	28.65%	8.59%	15.69%
ULTRACEMCO	11235.00	76.00	0.68%	1.44	161.25	12339.00	8.95%	9740.00	15.35%	-4.57%	11.17%
WIPRO	248.50	0.56	0.23%	44.45	110.46	324.60	23.44%	219.53	13.20%	2.80%	-45.09%
ETERNAL	261.90	5.34	2.08%	662.34	1727.25	304.70	14.05%	166.75	57.06%	10.28%	#VALUE!

Disclaimer / Disclosures

ANALYST CERTIFICATION

I, Mrs. Vaishali Parekh B.com, Research Analyst, author and the name subscribed to this report, hereby certify that all of the views expressed in this research report accurately reflect our views about the subject issuer(s) or securities. We also certify that no part of our compensation was, is, or will be directly or indirectly related to the specific recommendation(s) or view(s) in this report.

Terms & conditions and other disclosures:

Prabhudas Lilladher Pvt. Ltd, Mumbai, India (hereinafter referred to as "PL") is engaged in the business of Stock Broking, Portfolio Manager, Depository Participant and distribution for third party financial products. PL is a subsidiary of Prabhudas Lilladher Advisory Services Pvt Ltd. which has its various subsidiaries engaged in business of commodity broking, investment banking, financial services (margin funding) and distribution of third party financial/other products, details in respect of which are available at www.plindia.com

This document has been prepared by the Research Division of PL and is meant for use by the recipient only as information and is not for circulation. This document is not to be reported or copied or made available to others without prior permission of PL. It should not be considered or taken as an offer to sell or a solicitation to buy or sell any security.

The information contained in this report has been obtained from sources that are considered to be reliable. However, PL has not independently verified the accuracy or completeness of the same. Neither PL nor any of its affiliates, its directors or its employees accepts any responsibility of whatsoever nature for the information, statements and opinion given, made available or expressed herein or for any omission therein.

Recipients of this report should be aware that past performance is not necessarily a guide to future performance and value of investments can go down as well. The suitability or otherwise of any investments will depend upon the recipient's particular circumstances and, in case of doubt, advice should be sought from an independent expert/advisor.

Either PL or its affiliates or its directors or its employees or its representatives or its clients or their relatives may have position(s), make market, act as principal or engage in transactions of securities of companies referred to in this report and they may have used the research material prior to publication.

PL may from time to time solicit or perform investment banking or other services for any company mentioned in this document.

PL is registered as Research Analyst under Securities and Exchange Board of India (Research Analysts) Regulations, 2014 PL submits that no material disciplinary action has been taken on us by any Regulatory Authority impacting Equity Research Analysis activities.

PL or its research analysts or its associates or his relatives do not have any financial interest in the subject company.

PL or its research analysts or its associates or his relatives do not have actual/beneficial ownership of one per cent or more securities of the subject company at the end of the month immediately preceding the date of publication of the research report.

PL or its research analysts or its associates or his relatives do not have any material conflict of interest at the time of publication of the research report.

PL or its associates might have received compensation from the subject company in the past twelve months.

PL or its associates might have managed or co-managed public offering of securities for the subject company in the past twelve months or mandated by the subject company for any other assignment in the past twelve months.

PL or its associates might have received any compensation for investment banking or merchant banking or brokerage services from the subject company in the past twelve months.

PL or its associates might have received any compensation for products or services other than investment banking or merchant banking or brokerage services from the subject company in the past twelve months PL or its associates might have received any compensation or other benefits from the subject company or third party in connection with the research report.

PL encourages independence in research report preparation and strives to minimize conflict in preparation of research report. PL or its analysts did not receive any compensation or other benefits from the subject Company or third party in connection with the preparation of the research report. PL or its Research Analysts do not have any material conflict of interest at the time of publication of this report.

It is confirmed that Mrs.Vaishali Parekh B.com, Research Analyst of this report has not received any compensation from the companies mentioned in the report in the preceding twelve months compensation of our Research Analysts is not based on any specific merchant banking, investment banking or brokerage service transactions.

The Research analysts for this report certifies that all of the views expressed in this report accurately reflect his or her personal views about the subject company or companies and its or their securities, and no part of his or her compensation was, is or will be, directly or indirectly related to specific recommendations or views expressed in this report.

The research analysts for this report has not served as an officer, director or employee of the subject company PL or its research analysts have not engaged in market making activity for the subject company

Our sales people, traders, and other professionals or affiliates may provide oral or written market commentary or trading strategies to our clients that reflect opinions that are contrary to the opinions expressed herein, and our proprietary trading and investing businesses may make investment decisions that are inconsistent with the recommendations expressed herein. In reviewing these materials, you should be aware that any or all of the foregoing, among other things, may give rise to real or potential conflicts of interest.

PL and its associates, their directors and employees may (a) from time to time, have a long or short position in, and buy or sell the securities of the subject company or (b) be engaged in any other transaction involving such securities and earn brokerage or other compensation or act as a market maker in the financial instruments of the subject company or act as an advisor or lender/borrower to the subject company or may have any other potential conflict of interests with respect to any recommendation and other related information and opinions.