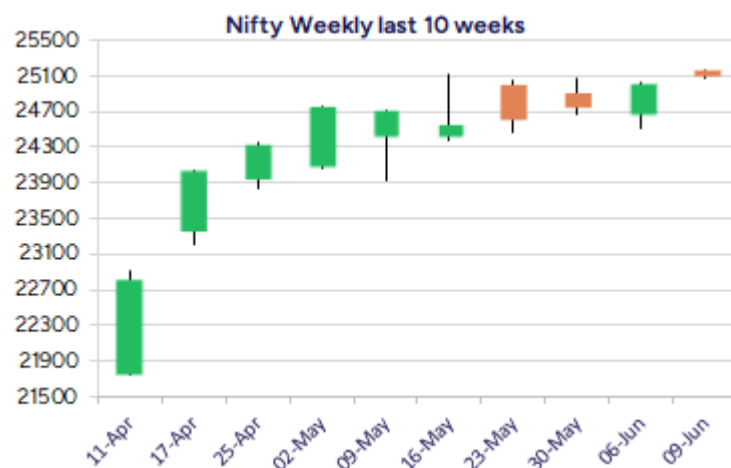
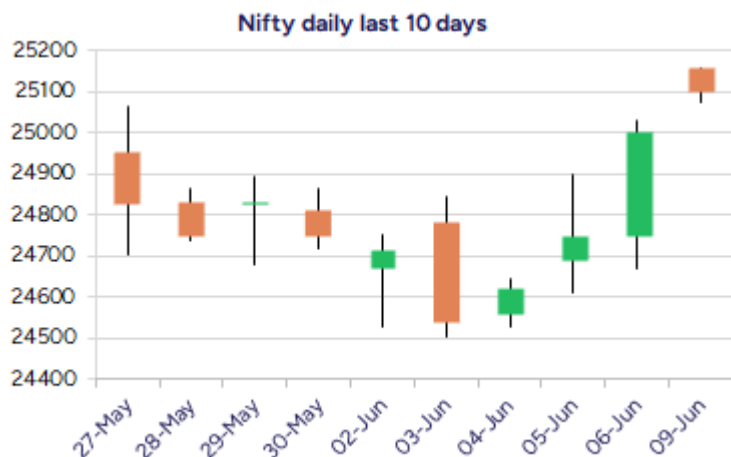


Date: 10th June 2025

* Sensex 82445.21 + 256.22

* Nifty 25103.20 + 100.15

* Bank Nifty 56839.60 + 261.20



*Blue candle → Close rate > Open rate * Red candle → Close rate < Open rate

Market Preview

Nifty ends near 25100 zone

Nifty continued with the positive move opening on a strong note above 25100 zone with sentiment turned positive anticipating for further gains in the coming days. BankNifty made new high above the 57000 zone with the undertone maintained strong with much upside potential visible in the coming sessions. The market breadth was strong with the advance decline indicating a ratio of 3:1 at close.

Market Forecast

Nifty daily range 24900-25300

Nifty opened on a positive note with a gap up above the 25100 zone and thereafter, remained rangebound with a very narrow movement for rest part of the session with bias and sentiment maintained positive anticipating for further rise in the coming days. The index showing strength has witnessed support from the broader markets as well, with active participation visible and can boost the further development of the market overall. As mentioned earlier, once the recent peak of 25116 zone is breached decisively, one can expect for fresh targets of 25600 and 26000 levels in the coming days for the index.

BankNifty, once again hit new high in the opening session scaling 57000 level and with bias maintained strong, hovered never the 56900 zone and can expect for further upward movement in the coming days with PSU banks also beginning to gain strength and can carry on with the positive move further ahead. As said earlier, one can expect the index to gain further for fresh upside targets of 57700 and 60000 levels achievable in the coming days with 55800 zone as the important support area.

The support for the day is seen at 24900 levels while the resistance is seen at 25300 levels. BankNifty would have the daily range of 56500-57400 levels.

Indices	Period	Closing	% Chng	Trend	Reversal	2 Sup	1 Sup	Pivot	1 Res	2 Res
Nifty	Daily	25103.20	0.40%	3	24875.90	25031	25067	25113	25150	25196
	Weekly	25003.05	1.02%	12	24797.10	24320	24662	24845	25187	25371
	Monthly	24750.70	1.71%	1	24390.40	23422	24086	24600	25265	25779
Bank Nifty	Daily	56839.60	0.46%	3	56412.95	56637	56738	56894	56995	57151
	Weekly	56578.40	1.49%	4	56058.75	54933	55756	56225	57047	57516
	Monthly	55749.70	1.20%	2	53879.10	52648	54199	55036	56587	57424
Sensex	Daily	82445.21	0.31%	3	81771.80	82195	82320	82494	82620	82794
	Weekly	82188.99	0.91%	12	81629.70	79977	81083	81691	82797	83404
	Monthly	81451.01	1.51%	1	80320.40	77296	79374	81046	83123	84796

Daily Trend turned Up			
Scrip Name	LCP	Curr Trnd	Reversal
ASTRAL	1534.9	-6	1524
BAJAJ AUTO	8641	-8	8627.2
BIOCON	338.15	-2	334
BIRLACORPN	1397.6	-13	1385
CANFINHOME	808.9	-4	788.9
CHAMBLFERT	551.95	-2	545
FEDERALBNK	212.7	-2	208.7
GAIL	193.64	-7	191.15
GNFC	553.7	-3	547.5
HCLTECH	1648.3	-6	1636.9
HEROMOTOCO	4349.4	-6	4265
ICIL	280.8	-16	273.15

* Trends turned Up after a significant period

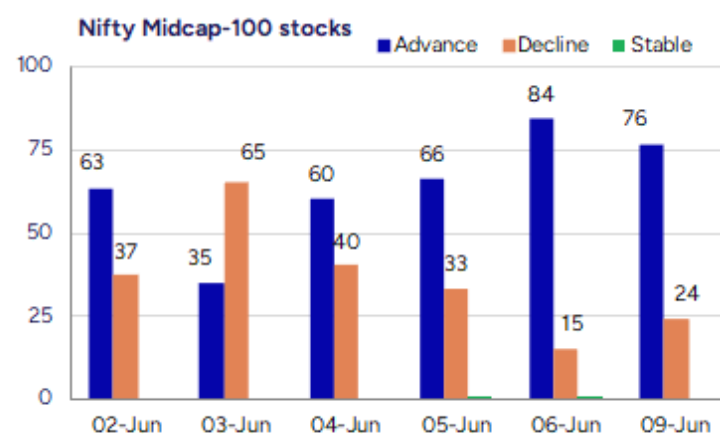
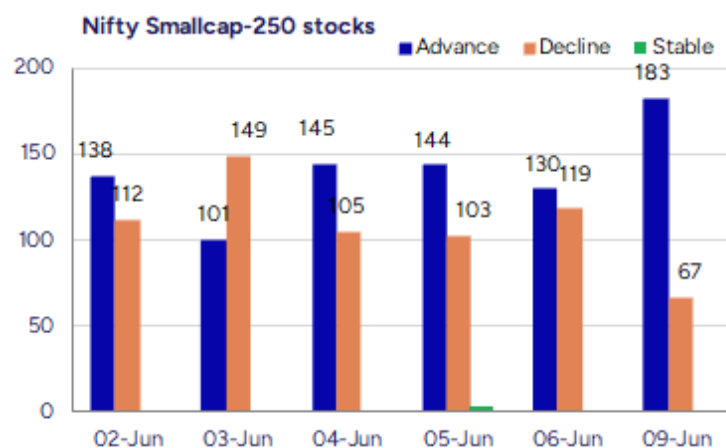
Daily Trend turned Up			
Scrip Name	LCP	Curr Trnd	Reversal
JKLAKSHMI	828.7	-10	819.95
MAITHANALL	1220	-4	1130.15
METROPOLIS	1717.8	-2	1685
OIL	434.2	-6	427.8
PETRONET	310.65	-12	306.8
PIIND	3935.8	-2	3920.55
SIEMENS	3383.3	-2	3303.3
SYNGENE	656.45	-4	646.05
TATAELXSI	6631.5	-1	6489.35
TATAMOTORS	717.8	-14	713.1
TCS	3421.9	-9	3404.1
TVTODAY	171.73	-11	169.6

* Trends turned Up after a significant period

Gainers - Losers (Nifty 500 Stocks)

Gainers			
Company Name	Last Price	% Gain	Volume
Airo Lam	114.2	20	93768
Divyadhan Recyc	48	20	48000
Hb Stockhol	103.38	20	849698
Oriental Carbon	251.79	20	126782
Somany Ceramics	564.05	20	650155
GOCL Corp	379.35	19.99	2595809
Hybrid Fin Ser	18.79	19.99	276982

Losers			
Company Name	Last Price	% Loss	Volume
SEPC	13.61	-6.33	25516337
Avantel	160.74	-6.2	8437016
Avantel	160.74	-6.2	8437016
Art Nirman	58.73	-6.15	179904
Orient Cement	333.2	-5.84	2620763
Macobs Tech	169.5	-5.83	14400
Upsurge Seeds	194	-5.37	600



Nifty Daily chart with RSI indicator



BankNifty Daily chart with RSI indicator

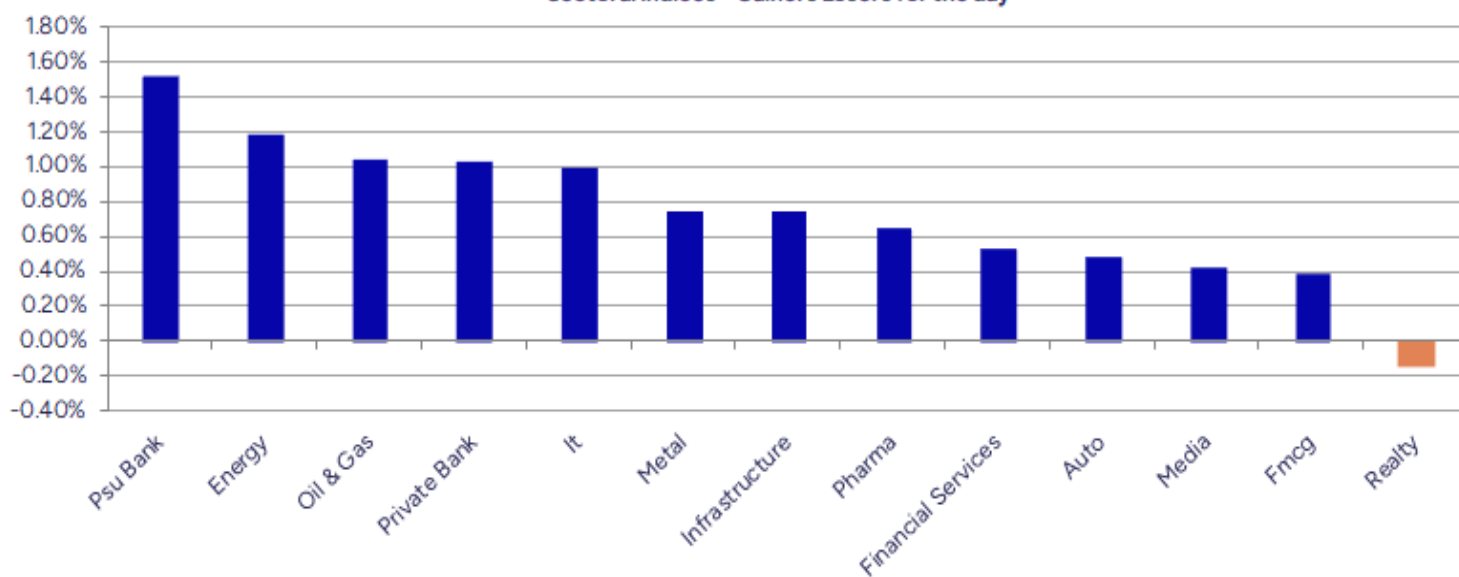


Breakouts - Cross above 200 DMA				Breakdown - Cross below 200 DMA			
Company Name	LCP	Change %	200 DMA	Company Name	LCP	Change %	200 DMA
Oriental Carbon	251.79	13.75	221.35	Chetana Educati	91.1	-1.56	92.54
Balu Forge Indu	755.1	11.32	678.34	Kingfa Science	3103.6	-1.49	3150.68
Jaiprakash Pow	17.73	7.19	16.54	CenturyPlyboard	773.85	-0.95	781.3
Edelweiss	113.58	5.73	107.42	Aarey Drugs	54.62	-0.89	55.11
GOCL Corp	379.35	5.32	360.19	Nureca	281.75	-0.88	284.25
D-Link India	544.7	4.76	519.97	MOS Utility	274.65	-0.86	277.02
Wealth First Po	1272.25	4.56	1216.73	Shriram Propert	97.75	-0.77	98.51
InfoBeans Tech	400.2	4.47	383.07	Jullundur Motor	94.56	-0.60	95.13
RSWM	184.15	3.66	177.64	Inspirisys Solu	105.28	-0.15	105.44
Powergrid	87.28	3.16	84.61	Orient Cement	333.2	-0.07	333.43
Gokul Agro	288.16	2.65	280.73				
Datamatics Glob	627.75	2.65	611.56				
Hind Constr	36.12	2.64	35.19				
APTUS VALUE	328.4	2.64	319.95				
ADF Foods	274.4	2.56	267.54				
G R Infraprojec	1394.5	2.54	1359.91				
Prakash Ind	173.5	2.47	169.31				
BLAL	231.08	2.36	225.76				

* Stocks crossing above its Simple Moving Average (200DMA)

* Stocks crossing below its Simple Moving Average (200DMA)

Sectoral Indices - Gainers Losers for the day



Stocks witnessing a volume surge as compared to their 5 day average volume

Watch out for the stocks that have seen a huge spurt in its share price over the last three days

Volume Shockers - NSE					
Company name	LCP	% Chg	Volume	Avg Vol *	% Chg
Diamond Power	103.97	2.66	8466922	6800	124406
Creative Eye	10.09	19.98	712944	4009	17683
Atal	17.06	2.46	10530865	100889	10338
Capri Global	179.22	17.88	93555172	1000204	9254
Art Nirman	59	-5.72	179644	2051	8657
Hb Stockhol	103.38	20	849698	10914	7685
Shakti Pumps	1013.25	7.82	2439263	38631	6214
Krebs Biochem	105.11	8.33	404408	6498	6124
Greenlam Ind	254.8	6.45	1688079	27795	5973
Williamson Mago	34.81	13.31	721135	17066	4126
BEW Engineering	186.9	3.35	36500	1125	3144
Shyam Telecom	13.48	0.15	45772	1416	3132
Westlife Food	733.35	9.89	4255347	135228	3047
Jai Balaji Ind	105.57	0.95	1671328	54390	2973
Five-Star Busin	799.95	9.46	8839377	295334	2893
Laxmi Goldorna	628.15	10	30512	1094	2690
Balaxi Pharma	54.94	5.76	1026889	38449	2571
Motisons Jewell	19.87	17.09	19213252	764990	2412
Cera Sanitary	7135.5	7.96	201565	9282	2072
Hercules Hoists	217	8.8	438183	21080	1979

* the Average Volume of last 5 days

Price Shockers - NSE				
Company name	LCP	Prv Close	% Chg	Volume
Wealth First Po	1290.4	877.2	47.1	89169
Creative Eye	10.09	6.91	46.02	712944
Hybrid Fin Ser	18.79	13.13	43.11	276982
Krebs Biochem	104	77.37	34.42	412352
TVS Electronics	521	400.2	30.18	4342348
Hb Stockhol	103.38	80.29	28.76	849698
Focus Lighting	126.06	99.23	27.04	1806988
The Grob Tea	1260	999.25	26.09	22098
Peria Karamalai	905	735.45	23.05	4280
Somany Ceramics	564.05	459.5	22.75	650155
Hercules Hoists	217.4	177.43	22.53	440303
Orient Bell	303.5	249.33	21.73	110043
GOCL Corp	379.35	312.55	21.37	2595809
Nila Spaces	13.02	10.76	21	2256622
Crown Lifters	209.62	173.5	20.82	91322
Oriental Carbon	251.79	208.5	20.76	126782
Airo Lam	114.2	95.42	19.68	93768
JTL Ind.	77.36	64.92	19.16	2725539
Cubex Tubings	113.77	96.06	18.44	208589
JM Financial	154.82	130.92	18.26	21642054

* the % price rise of the last 3 days

Symbol	LTP	Chng	% Chng	Volume (lacs)	Turnover (crs.)	52w High	Diff with 52w H	52w Low	Diff with 52w L	365 days % chng	30 days % chng
NIFTY 50	25103.20	100.15	0.40%	2791.57	25602.67	26277.35	4.47%	21743.65	15.45%	4.14%	7.35%
ADANIENT	2582.00	47.80	1.89%	17.11	439.48	3345.00	22.81%	2025.00	27.51%	12.58%	-21.29%
ADANIPTS	1467.00	-4.70	-0.32%	14.93	219.59	1604.95	8.60%	995.65	47.34%	12.66%	6.73%
APOLLOHOSP	6935.00	-7.50	-0.11%	2.39	165.54	7545.35	8.09%	5900.00	17.54%	3.28%	15.43%
ASIANPAINT	2251.00	5.80	0.26%	10.41	233.96	3394.90	33.69%	2124.75	5.94%	-2.37%	-23.31%
AXISBANK	1220.50	25.90	2.17%	91.38	1112.95	1339.65	8.89%	933.50	30.74%	3.78%	0.66%
BAJAJ-AUTO	8645.00	8.00	0.09%	4.44	383.13	12774.00	32.32%	7089.35	21.94%	12.42%	-11.19%
BAJAJFINSV	2021.00	31.00	1.56%	42.21	854.50	2135.00	5.34%	1510.80	33.77%	1.02%	26.94%
BAJFINANCE	9624.00	252.50	2.69%	23.49	2261.49	9788.00	1.68%	6425.00	49.79%	8.45%	30.32%
BEL	392.15	1.45	0.37%	137.41	540.24	396.85	1.18%	240.25	63.23%	23.70%	37.96%
BHARTIARTL	1865.00	-5.20	-0.28%	36.49	679.75	1917.00	2.71%	1329.00	40.33%	1.18%	31.22%
CIPLA	1505.70	1.50	0.10%	6.90	103.74	1702.05	11.54%	1335.00	12.79%	1.64%	0.46%
COALINDIA	401.00	2.05	0.51%	96.25	387.51	543.55	26.23%	349.25	14.82%	4.33%	-16.74%
DRREDDY	1319.50	-1.40	-0.11%	12.27	161.71	1421.49	7.17%	1020.00	29.36%	14.27%	-78.21%
EICHERMOT	5385.00	-9.00	-0.17%	2.71	146.28	5906.50	8.83%	4508.75	19.43%	1.31%	13.27%
GRASIM	2607.50	33.10	1.29%	5.52	143.71	2877.75	9.39%	2276.95	14.52%	-2.29%	8.17%
HCLTECH	1648.50	10.80	0.66%	13.00	214.54	2012.20	18.07%	1302.75	26.54%	4.35%	14.40%
HDFCBANK	1980.10	1.40	0.07%	66.01	1308.45	1996.30	0.81%	1546.60	28.03%	4.71%	25.76%
HDFCLIFE	760.00	4.90	0.65%	31.51	237.94	791.10	3.93%	550.40	38.08%	5.82%	34.13%
HEROMOTOCO	4342.00	74.00	1.73%	4.95	214.24	6246.25	30.49%	3344.00	29.84%	10.74%	-23.54%
HINDALCO	650.00	-0.15	-0.02%	28.22	183.82	772.65	15.87%	546.45	18.95%	3.67%	-4.44%
HINDUNILVR	2390.00	0.20	0.01%	12.94	309.45	3035.00	21.25%	2136.00	11.89%	2.44%	-7.29%
ICICIBANK	1434.50	-25.20	-1.73%	110.19	1588.91	1471.60	2.52%	1096.60	30.81%	5.10%	30.13%
INDUSINDBK	836.00	13.15	1.60%	68.94	574.98	1550.00	46.06%	606.00	37.95%	0.57%	-44.85%
INFY	1572.00	8.20	0.52%	29.03	457.79	2006.45	21.65%	1307.00	20.28%	3.73%	1.97%
ITC	423.00	1.95	0.46%	104.73	442.57	528.50	19.96%	390.15	8.42%	-0.59%	-4.12%
JIOFIN	305.45	11.45	3.89%	266.03	802.70	368.30	17.06%	198.65	53.76%	18.38%	-16.75%
JSWSTEEL	1006.45	1.55	0.15%	18.64	188.05	1074.90	6.37%	854.15	17.83%	5.01%	10.17%
KOTAKBANK	2140.80	67.40	3.25%	57.79	1230.82	2301.90	7.00%	1679.05	27.50%	-1.41%	18.23%
LT	3679.00	22.70	0.62%	8.98	330.79	3963.50	7.18%	2965.30	24.07%	6.17%	3.50%
M&M	3085.00	-21.50	-0.69%	13.64	423.19	3270.95	5.68%	2425.00	27.22%	4.17%	8.72%
MARUTI	12649.00	187.00	1.50%	3.23	406.58	13680.00	7.54%	10725.00	17.94%	1.73%	-2.72%
NESTLEIND	2418.00	0.80	0.03%	3.39	81.81	2778.00	12.96%	2110.00	14.60%	3.95%	-3.41%
NTPC	337.00	4.15	1.25%	194.13	651.31	448.45	24.85%	292.80	15.10%	-0.57%	-7.70%
ONGC	243.20	3.14	1.31%	77.17	187.27	345.00	29.51%	205.00	18.63%	2.17%	-7.81%
POWERGRID	300.45	4.65	1.57%	86.64	259.31	366.25	17.97%	247.30	21.49%	-1.17%	-4.38%
RELIANCE	1447.20	3.70	0.26%	78.85	1143.26	1608.80	10.04%	1114.85	29.81%	4.81%	-50.90%
SBILIFE	1787.10	6.50	0.37%	12.21	218.41	1936.00	7.69%	1372.55	30.20%	4.75%	24.88%
SBIN	820.00	6.95	0.85%	127.90	1049.90	899.00	8.79%	680.00	20.59%	4.34%	-2.04%
SHRIRAMFIN	696.50	8.25	1.20%	114.13	801.10	730.45	4.65%	480.01	45.10%	14.43%	-72.45%
SUNPHARMA	1693.40	14.20	0.85%	25.90	435.58	1960.35	13.62%	1455.05	16.38%	-3.76%	11.44%
TATACONSUM	1120.10	4.50	0.40%	4.68	52.24	1250.10	10.40%	882.90	26.87%	0.17%	-1.77%
TATAMOTORS	717.50	6.50	0.91%	98.99	712.35	1179.00	39.14%	535.75	33.92%	0.35%	-26.74%
TATASTEEL	157.30	-0.19	-0.12%	153.10	241.16	184.60	14.79%	122.62	28.28%	10.30%	-11.97%
TCS	3423.00	38.80	1.15%	17.19	587.88	4592.25	25.46%	3056.05	12.01%	-1.63%	-13.09%
TECHM	1578.10	7.00	0.45%	5.98	94.65	1807.70	12.70%	1209.40	30.49%	5.18%	14.05%
TITAN	3533.90	-26.00	-0.73%	5.40	191.34	3867.00	8.61%	2925.00	20.82%	1.41%	3.36%
TRENT	5922.00	145.00	2.51%	13.77	810.02	8345.00	29.04%	4488.00	31.95%	12.99%	16.36%
ULTRACEMCO	11266.00	13.00	0.12%	2.09	234.94	12339.00	8.70%	9931.10	13.44%	-0.98%	7.55%
WIPRO	251.72	3.13	1.26%	91.90	230.61	324.60	22.45%	226.30	11.23%	2.72%	-48.70%
ETERNAL	256.99	-4.87	-1.86%	336.38	871.13	304.70	15.66%	179.33	43.31%	15.29%	#VALUE!

Disclaimer / Disclosures

ANALYST CERTIFICATION

I, Mrs. Vaishali Parekh B.com, Research Analyst, author and the name subscribed to this report, hereby certify that all of the views expressed in this research report accurately reflect our views about the subject issuer(s) or securities. We also certify that no part of our compensation was, is, or will be directly or indirectly related to the specific recommendation(s) or view(s) in this report.

Terms & conditions and other disclosures:

Prabhudas Lilladher Pvt. Ltd, Mumbai, India (hereinafter referred to as "PL") is engaged in the business of Stock Broking, Portfolio Manager, Depository Participant and distribution for third party financial products. PL is a subsidiary of Prabhudas Lilladher Advisory Services Pvt Ltd. which has its various subsidiaries engaged in business of commodity broking, investment banking, financial services (margin funding) and distribution of third party financial/other products, details in respect of which are available at www.plindia.com

This document has been prepared by the Research Division of PL and is meant for use by the recipient only as information and is not for circulation. This document is not to be reported or copied or made available to others without prior permission of PL. It should not be considered or taken as an offer to sell or a solicitation to buy or sell any security.

The information contained in this report has been obtained from sources that are considered to be reliable. However, PL has not independently verified the accuracy or completeness of the same. Neither PL nor any of its affiliates, its directors or its employees accepts any responsibility of whatsoever nature for the information, statements and opinion given, made available or expressed herein or for any omission therein.

Recipients of this report should be aware that past performance is not necessarily a guide to future performance and value of investments can go down as well. The suitability or otherwise of any investments will depend upon the recipient's particular circumstances and, in case of doubt, advice should be sought from an independent expert/advisor.

Either PL or its affiliates or its directors or its employees or its representatives or its clients or their relatives may have position(s), make market, act as principal or engage in transactions of securities of companies referred to in this report and they may have used the research material prior to publication.

PL may from time to time solicit or perform investment banking or other services for any company mentioned in this document.

PL is registered as Research Analyst under Securities and Exchange Board of India (Research Analysts) Regulations, 2014 PL submits that no material disciplinary action has been taken on us by any Regulatory Authority impacting Equity Research Analysis activities.

PL or its research analysts or its associates or his relatives do not have any financial interest in the subject company.

PL or its research analysts or its associates or his relatives do not have actual/beneficial ownership of one per cent or more securities of the subject company at the end of the month immediately preceding the date of publication of the research report.

PL or its research analysts or its associates or his relatives do not have any material conflict of interest at the time of publication of the research report.

PL or its associates might have received compensation from the subject company in the past twelve months.

PL or its associates might have managed or co-managed public offering of securities for the subject company in the past twelve months or mandated by the subject company for any other assignment in the past twelve months.

PL or its associates might have received any compensation for investment banking or merchant banking or brokerage services from the subject company in the past twelve months.

PL or its associates might have received any compensation for products or services other than investment banking or merchant banking or brokerage services from the subject company in the past twelve months PL or its associates might have received any compensation or other benefits from the subject company or third party in connection with the research report.

PL encourages independence in research report preparation and strives to minimize conflict in preparation of research report. PL or its analysts did not receive any compensation or other benefits from the subject Company or third party in connection with the preparation of the research report. PL or its Research Analysts do not have any material conflict of interest at the time of publication of this report.

It is confirmed that Mrs.Vaishali Parekh B.com, Research Analyst of this report has not received any compensation from the companies mentioned in the report in the preceding twelve months compensation of our Research Analysts is not based on any specific merchant banking, investment banking or brokerage service transactions.

The Research analysts for this report certifies that all of the views expressed in this report accurately reflect his or her personal views about the subject company or companies and its or their securities, and no part of his or her compensation was, is or will be, directly or indirectly related to specific recommendations or views expressed in this report.

The research analysts for this report has not served as an officer, director or employee of the subject company PL or its research analysts have not engaged in market making activity for the subject company

Our sales people, traders, and other professionals or affiliates may provide oral or written market commentary or trading strategies to our clients that reflect opinions that are contrary to the opinions expressed herein, and our proprietary trading and investing businesses may make investment decisions that are inconsistent with the recommendations expressed herein. In reviewing these materials, you should be aware that any or all of the foregoing, among other things, may give rise to real or potential conflicts of interest.

PL and its associates, their directors and employees may (a) from time to time, have a long or short position in, and buy or sell the securities of the subject company or (b) be engaged in any other transaction involving such securities and earn brokerage or other compensation or act as a market maker in the financial instruments of the subject company or act as an advisor or lender/borrower to the subject company or may have any other potential conflict of interests with respect to any recommendation and other related information and opinions.