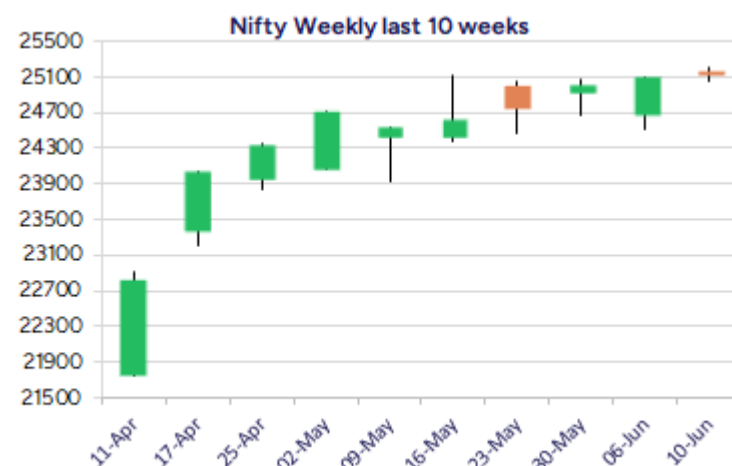
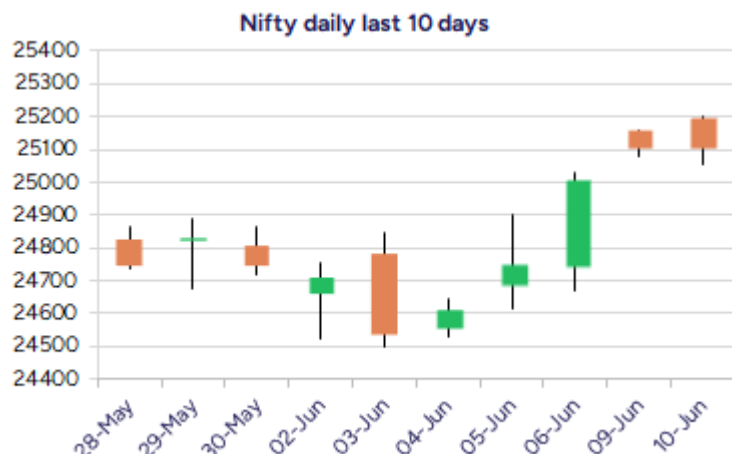


Date: 11th June 2025

* Sensex 82391.72 - 53.49

* Nifty 25104.25 + 1.05

* Bank Nifty 56629.10 - 210.50



*Blue candle → Close rate > Open rate * Red candle → Close rate < Open rate

Market Preview

Nifty consolidates; ends on a flat note

Nifty witnessed another day of consolidation near the 25100 zone with sluggish movement for the entire session maintaining the positive bias intact. BankNifty slipped to some extent with resistance witnessed near the 57000 zone and ended near the 56600 level with overall trend remaining positive. The market breadth was overall strong with the advance decline indicating a ratio of 3:2 at close.

Market Forecast

Nifty daily range 24900-25300

Nifty once again witnessed a sluggish session with a very narrow movement throughout the session to end on a flat note with the broader market showing some active participation to support the overall sentiment maintained positive. The index has been in consolidation and sustained above the 25000 zone maintaining the trend intact and once the recent peak of 25116 zone is breached decisively, one can expect for fresh targets of 25600 and 26000 levels in the coming days for the index, as mentioned earlier.

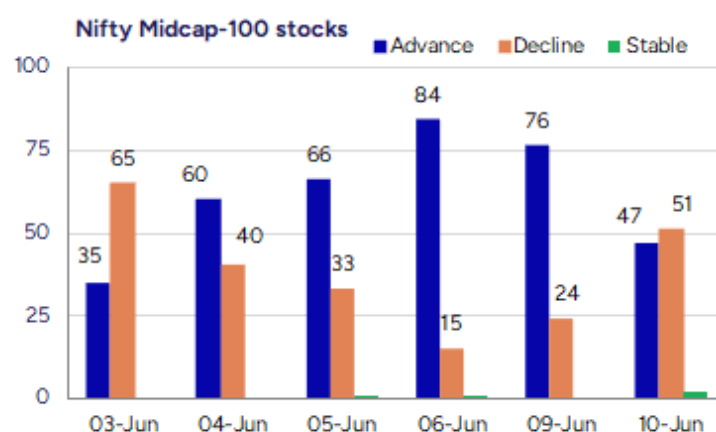
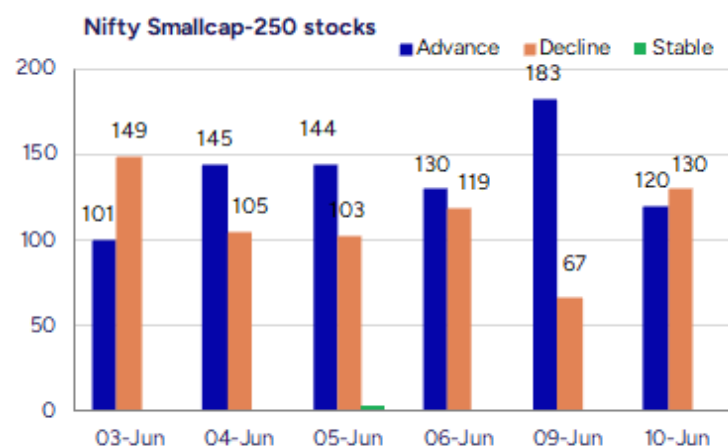
BankNifty, after the strong spurt has been witnessing a gradual slide since the last two sessions maintaining the positive bias and with 56000 zone positioned as the important support zone, the index would need another round of momentum breaching the 57000 level decisively to expect fresh upward move. As said earlier, one can expect the index to gain further for fresh upside targets of 57800 and 60000 levels achievable in the coming days with 55800 zone as the important support area.

The support for the day is seen at 24900 levels while the resistance is seen at 25300 levels. BankNifty would have the daily range of 56200-57200 levels.

Indices	Period	Closing	% Chng	Trend	Reversal	2 Sup	1 Sup	Pivot	1 Res	2 Res
Nifty	Daily	25104.25	0.00%	4	24924.90	24976	25040	25120	25184	25264
	Weekly	25003.05	1.02%	12	24797.10	24320	24662	24845	25187	25371
	Monthly	24750.70	1.71%	1	24390.40	23422	24086	24600	25265	25779
Bank Nifty	Daily	56629.10	-0.37%	4	56465.60	56285	56457	56736	56908	57187
	Weekly	56578.40	1.49%	4	56058.75	54933	55756	56225	57047	57516
	Monthly	55749.70	1.20%	2	53879.10	52648	54199	55036	56587	57424
Sensex	Daily	82391.72	-0.06%	4	81904.70	81997	82194	82438	82635	82878
	Weekly	82188.99	0.91%	12	81629.70	79977	81083	81691	82797	83404
	Monthly	81451.01	1.51%	1	80320.40	77296	79374	81046	83123	84796

Gainers - Losers (Nifty 500 Stocks)

Gainers				Losers			
Company Name	Last Price	% Gain	Volume	Company Name	Last Price	% Loss	Volume
Oriental Carbon	302.14	20	191777	Kore Digital	316.7	-9.99	177000
Pranik Logistic	75.6	20	123200	Krebs Biochem	94.73	-9.73	195119
Cinevista	18.28	19.95	816775	HMA Agro	33.87	-7.43	8526545
Rattan Power	14.29	19.68	304628474	Peria Karamalai	855.9	-6.01	3816
Atam Valves	121.78	19.6	818487	Manoj Vaibhav G	249.92	-5.61	529859
GE Power India	327.7	19.08	7313351	Jet Freight Log	14.86	-5.41	394886
Fidel Softech	219.85	18.52	112000	Hubtown	190.91	-5.33	1331395



Nifty Daily chart with RSI indicator



BankNifty Daily chart with RSI indicator



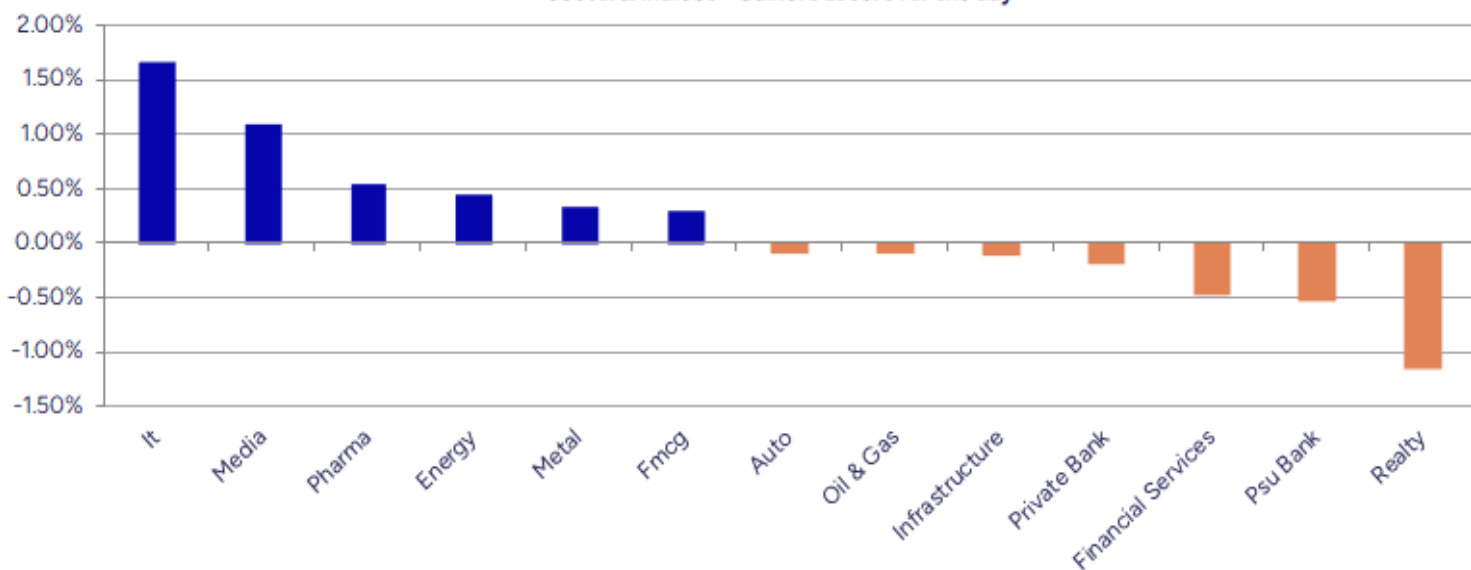
Breakouts - Cross above 200 DMA			
Company Name	LCP	Change %	200 DMA
Rattan Power	14.29	14.14	12.52
Airo Lam	126.53	9.87	115.16
NESCO	1023.15	6.76	958.35
Orient Bell	320.89	6.18	302.22
Aurum Proptech	212.62	4.68	203.12
Cinevista	18.28	4.52	17.49
Sahyadri Ind	314.65	4.22	301.92
SMC Global Secu	136.38	3.33	131.98
Gulf Oil Lubric	1234.6	3.15	1196.9
KRISHCA	294.8	3.03	286.13
Shriram Propert	101.28	2.83	98.49
Somany Ceramics	592.2	2.75	576.36
Talbro's Auto	298.85	2.42	291.78
Satin Credit	167.93	2.41	163.98
The Hi-Tech Gea	760.75	1.75	747.7
Alok Industries	20.86	1.71	20.51
Trejhara	241.74	1.47	238.23
DCM Shriram	1094.6	1.29	1080.61

* Stocks crossing above its Simple Moving Average (200DMA)

Breakdown - Cross below 200 DMA			
Company Name	LCP	Change %	200 DMA
Madhya Pradesh	35.4	-3.59	36.72
Crown Lifters	202.11	-2.76	207.84
Madhav Marbles	48.67	-2.27	49.8
Jet Freight Log	14.86	-2.17	15.19
Ashima	29.7	-2.17	30.36
STL Global	15.84	-2.10	16.18
Innova Captab	865.2	-1.76	880.67
Malu Paper	41.99	-1.43	42.6
Sapphire Foods	319.1	-1.05	322.49
Coral India Fin	47.74	-0.97	48.21
Caplin Labs	2031.3	-0.93	2050.43
United Nilgiri	440.3	-0.88	444.21
Inspirisys Solu	104.27	-0.88	105.2
Country Condos	6.88	-0.86	6.94
Dharmaj Crop	264.68	-0.84	266.91
Dredging Corp	776.75	-0.84	783.33
Omaxe	97.85	-0.81	98.65
BLAL	223.78	-0.77	225.51

* Stocks crossing below its Simple Moving Average (200DMA)

Sectoral Indices - Gainers Losers for the day



Stocks witnessing a volume surge as compared to their 5 day average volume

Watch out for the stocks that have seen a huge spurt in its share price over the last three days

Volume Shockers - NSE					
Company name	LCP	% Chg	Volume	Avg Vol *	% Chg
Diamond Power	103.95	0.36	5025241	6800	73796
Atal	18.19	6.06	12252098	100889	12044
United Polyfab	18.49	9.54	1731723	14703	11678
GE Power India	327.7	19.08	7313351	64435	11250
Laxmi Goldorna	666.35	6.08	85203	1094	7690
Airo Lam	126.53	10.8	628469	9282	6671
Balaxi Pharma	54.94	0.16	2570565	38449	6586
Creative Eye	11.09	9.91	243994	4009	5986
Vesuvius India	619	4.94	885649	17940	4837
Capri Global	178.98	-1.3	46741662	1000204	4573
Remsons Ind	140.06	-1.18	836283	21094	3864
BPL	94.83	12.96	3820287	97306	3826
TT	15.94	5.21	1980273	56021	3435
KCK Industries	38.95	0.13	450000	13600	3209
Jindal Saw	247.99	6.95	52706922	1651821	3091
Krebs Biochem	94.73	-9.73	195119	6498	2903
Shakti Pumps	976.65	-2.98	1079112	38631	2693
Shradha Infra	78.66	6.37	351845	13166	2572
Somany Ceramics	592.2	4.99	1371928	56332	2335
Jai Balaji Ind	104.26	-1.21	1291406	54390	2274

* the Average Volume of last 5 days

Price Shockers - NSE				
Company name	LCP	Prv Close	% Chg	Volume
Oriental Carbon	302.14	209.83	43.99	191777
Airo Lam	126.53	95.17	32.95	628469
Hybrid Fin Ser	20.66	15.66	31.93	422637
Creative Eye	11.09	8.41	31.87	243994
Rattan Power	14.29	11.19	27.7	304628474
Wealth First Po	1372.3	1075.35	27.61	56529
GOCL Corp	398.45	316.15	26.03	2176940
Somany Ceramics	592.2	470.05	25.99	1371928
Cinevista	18.28	14.53	25.81	816775
Rattanindia Ent	58.95	47.61	23.82	67504540
Williamson Mago	37.57	30.72	22.3	213985
Orient Bell	320.89	263.58	21.74	91410
Regency Ceramic	50.98	42.14	20.98	18814
Coffee Day	36.23	30.07	20.49	5077346
United Polyfab	18.49	15.35	20.46	1731723
GE Power India	327.7	272.65	20.19	7313351
Mold Tek Tech	165.41	139.33	18.72	971837
Capri Global	178.98	152.04	17.72	46741662
Baid Finserv	13.02	11.08	17.51	1859532
Hb Stockhol	100.92	86.15	17.14	250856

* the % price rise of the last 3 days

Symbol	LTP	Chng	% Chng	Volume (lacs)	Turnover (crs.)	52w High	Diff with 52w H	52w Low	Diff with 52w L	365 days % chng	30 days % chng
NIFTY 50	25104.25	1.05	#VALUE!	3072.98	28812.14	26277.35	4.46%	21743.65	15.46%	4.56%	7.78%
ADANIENT	2618.00	35.90	1.39%	20.84	547.33	3345.00	21.73%	2025.00	29.28%	14.71%	-19.80%
ADANIPTS	1474.10	7.00	0.48%	21.25	314.40	1604.95	8.15%	995.65	48.05%	12.31%	6.40%
APOLLOHOSP	6916.00	-16.00	-0.23%	5.59	388.64	7545.35	8.34%	5992.05	15.42%	3.12%	15.25%
ASIANPAINT	2217.90	-9.50	-0.43%	18.09	402.12	3394.90	34.67%	2124.75	4.38%	-2.25%	-23.22%
AXISBANK	1233.10	13.20	1.08%	77.46	950.41	1339.65	7.95%	933.50	32.09%	5.98%	2.79%
BAJAJ-AUTO	8635.00	-6.00	-0.07%	3.50	301.89	12774.00	32.40%	7089.35	21.80%	12.48%	-11.15%
BAJAJFINSV	1997.50	-19.90	-0.99%	33.07	661.72	2135.00	6.44%	1523.25	31.13%	2.41%	28.69%
BAJFINANCE	9490.00	-117.50	-1.22%	9.04	864.49	9788.00	3.04%	6425.00	47.70%	11.19%	33.60%
BEL	397.30	4.85	1.24%	264.51	1053.36	401.85	1.13%	240.25	65.37%	24.25%	38.58%
BHARTIARTL	1855.90	-9.20	-0.49%	79.26	1474.19	1917.00	3.19%	1372.85	35.19%	0.90%	30.86%
CIPLA	1509.50	2.90	0.19%	9.30	140.34	1702.05	11.31%	1335.00	13.07%	1.80%	0.62%
COALINDIA	399.90	-1.10	-0.27%	63.63	255.47	543.55	26.43%	349.25	14.50%	4.86%	-16.31%
DRREDDY	1346.80	27.70	2.10%	30.22	407.07	1421.49	5.25%	1020.00	32.04%	14.12%	-78.24%
EICHERMOT	5385.00	-6.00	-0.11%	3.31	178.62	5906.50	8.83%	4508.75	19.43%	1.26%	13.21%
GRASIM	2704.00	95.50	3.66%	28.85	781.01	2877.75	6.04%	2276.95	18.76%	-1.00%	9.61%
HCLTECH	1670.70	22.40	1.36%	30.55	510.73	2012.20	16.97%	1302.75	28.24%	5.03%	15.14%
HDFCBANK	1962.80	-16.10	-0.81%	77.66	1528.39	1996.30	1.68%	1552.20	26.45%	4.72%	25.78%
HDFCLIFE	762.20	1.80	0.24%	21.67	164.67	791.10	3.65%	561.30	35.79%	6.56%	35.07%
HEROMOTOCO	4380.00	30.60	0.70%	4.69	205.22	6246.25	29.88%	3344.00	30.98%	12.86%	-22.08%
HINDALCO	656.95	6.15	0.94%	56.94	375.10	772.65	14.97%	546.45	20.22%	3.77%	-4.34%
HINDUNILVR	2392.00	-1.20	-0.05%	17.79	425.64	3035.00	21.19%	2136.00	11.99%	2.58%	-7.16%
ICICIBANK	1421.80	-13.00	-0.91%	129.05	1836.27	1471.60	3.38%	1099.45	29.32%	3.30%	27.91%
INDUSINDBK	844.25	7.60	0.91%	101.62	862.07	1550.00	45.53%	606.00	39.32%	2.25%	-43.93%
INFY	1594.00	21.10	1.34%	85.91	1370.31	2006.45	20.56%	1307.00	21.96%	4.33%	2.56%
ITC	427.65	4.60	1.09%	130.40	556.26	528.50	19.08%	390.15	9.61%	-0.12%	-3.67%
JIOFIN	302.40	-1.85	-0.61%	152.44	463.87	368.30	17.89%	198.65	52.23%	22.51%	-13.85%
JSWSTEEL	1002.90	-5.10	-0.51%	17.48	176.19	1074.90	6.70%	854.15	17.41%	5.33%	10.51%
KOTAKBANK	2148.00	9.80	0.46%	49.16	1059.81	2301.90	6.69%	1679.05	27.93%	1.67%	21.93%
LT	3675.00	-3.90	-0.11%	14.54	535.47	3963.50	7.28%	2965.30	23.93%	6.82%	4.14%
M&M	3075.20	-12.20	-0.40%	17.87	551.00	3270.95	5.98%	2425.00	26.81%	3.53%	8.05%
MARUTI	12472.00	-165.00	-1.31%	3.25	409.19	13680.00	8.83%	10725.00	16.29%	3.16%	-1.36%
NESTLEIND	2433.00	17.70	0.73%	6.76	163.80	2778.00	12.42%	2110.00	15.31%	3.87%	-3.48%
NTPC	339.30	2.20	0.65%	120.60	409.10	448.45	24.34%	292.80	15.88%	0.70%	-6.52%
ONGC	244.94	2.14	0.88%	76.59	186.94	345.00	29.00%	205.00	19.48%	3.34%	-6.76%
POWERGRID	301.00	0.50	0.17%	72.73	218.74	366.25	17.82%	247.30	21.71%	0.40%	-2.86%
RELIANCE	1437.30	-11.50	-0.79%	79.12	1141.44	1608.80	10.66%	1114.85	28.92%	5.20%	-50.72%
SBILIFE	1780.00	-10.80	-0.60%	14.00	249.27	1936.00	8.06%	1372.55	29.69%	5.35%	25.60%
SBIN	817.00	-3.05	-0.37%	65.60	536.67	899.00	9.12%	680.00	20.15%	5.24%	-1.19%
SHRIRAMFIN	699.65	1.65	0.24%	64.53	451.41	730.45	4.22%	493.35	41.82%	16.05%	-72.06%
SUNPHARMA	1690.00	-4.40	-0.26%	23.69	399.78	1960.35	13.79%	1460.90	15.68%	-2.89%	12.45%
TATACONSUM	1115.00	-6.20	-0.55%	4.60	51.48	1250.10	10.81%	882.90	26.29%	0.67%	-1.27%
TATAMOTORS	732.70	14.90	2.08%	191.50	1394.97	1179.00	37.85%	535.75	36.76%	1.31%	-26.04%
TATASTEEL	155.65	-1.67	-1.06%	227.58	356.99	184.60	15.68%	122.62	26.94%	10.18%	-12.06%
TCS	3461.90	40.00	1.17%	24.20	837.90	4592.25	24.61%	3056.05	13.28%	-0.53%	-12.12%
TECHM	1612.90	33.80	2.14%	33.24	536.71	1807.70	10.78%	1209.40	33.36%	5.72%	14.63%
TITAN	3523.80	-10.10	-0.29%	5.62	197.93	3867.00	8.88%	2925.00	20.47%	0.67%	2.61%
TRENT	5816.00	-97.50	-1.65%	6.83	400.11	8345.00	30.31%	4488.00	29.59%	15.66%	19.11%
ULTRACEMCO	11392.00	132.00	1.17%	2.80	319.46	12339.00	7.67%	10047.85	13.38%	-0.92%	7.62%
WIPRO	254.69	3.40	1.35%	107.38	273.21	324.60	21.54%	228.00	11.71%	3.83%	-48.14%
ETERNAL	255.30	-1.54	-0.60%	366.63	934.94	304.70	16.21%	179.33	42.36%	13.08%	#VALUE!

Disclaimer / Disclosures

ANALYST CERTIFICATION

I, Mrs. Vaishali Parekh B.com, Research Analyst, author and the name subscribed to this report, hereby certify that all of the views expressed in this research report accurately reflect our views about the subject issuer(s) or securities. We also certify that no part of our compensation was, is, or will be directly or indirectly related to the specific recommendation(s) or view(s) in this report.

Terms & conditions and other disclosures:

Prabhudas Lilladher Pvt. Ltd, Mumbai, India (hereinafter referred to as "PL") is engaged in the business of Stock Broking, Portfolio Manager, Depository Participant and distribution for third party financial products. PL is a subsidiary of Prabhudas Lilladher Advisory Services Pvt Ltd. which has its various subsidiaries engaged in business of commodity broking, investment banking, financial services (margin funding) and distribution of third party financial/other products, details in respect of which are available at www.plindia.com

This document has been prepared by the Research Division of PL and is meant for use by the recipient only as information and is not for circulation. This document is not to be reported or copied or made available to others without prior permission of PL. It should not be considered or taken as an offer to sell or a solicitation to buy or sell any security.

The information contained in this report has been obtained from sources that are considered to be reliable. However, PL has not independently verified the accuracy or completeness of the same. Neither PL nor any of its affiliates, its directors or its employees accepts any responsibility of whatsoever nature for the information, statements and opinion given, made available or expressed herein or for any omission therein.

Recipients of this report should be aware that past performance is not necessarily a guide to future performance and value of investments can go down as well. The suitability or otherwise of any investments will depend upon the recipient's particular circumstances and, in case of doubt, advice should be sought from an independent expert/advisor.

Either PL or its affiliates or its directors or its employees or its representatives or its clients or their relatives may have position(s), make market, act as principal or engage in transactions of securities of companies referred to in this report and they may have used the research material prior to publication.

PL may from time to time solicit or perform investment banking or other services for any company mentioned in this document.

PL is registered as Research Analyst under Securities and Exchange Board of India (Research Analysts) Regulations, 2014 PL submits that no material disciplinary action has been taken on us by any Regulatory Authority impacting Equity Research Analysis activities.

PL or its research analysts or its associates or his relatives do not have any financial interest in the subject company.

PL or its research analysts or its associates or his relatives do not have actual/beneficial ownership of one per cent or more securities of the subject company at the end of the month immediately preceding the date of publication of the research report.

PL or its research analysts or its associates or his relatives do not have any material conflict of interest at the time of publication of the research report.

PL or its associates might have received compensation from the subject company in the past twelve months.

PL or its associates might have managed or co-managed public offering of securities for the subject company in the past twelve months or mandated by the subject company for any other assignment in the past twelve months.

PL or its associates might have received any compensation for investment banking or merchant banking or brokerage services from the subject company in the past twelve months.

PL or its associates might have received any compensation for products or services other than investment banking or merchant banking or brokerage services from the subject company in the past twelve months PL or its associates might have received any compensation or other benefits from the subject company or third party in connection with the research report.

PL encourages independence in research report preparation and strives to minimize conflict in preparation of research report. PL or its analysts did not receive any compensation or other benefits from the subject Company or third party in connection with the preparation of the research report. PL or its Research Analysts do not have any material conflict of interest at the time of publication of this report.

It is confirmed that Mrs.Vaishali Parekh B.com, Research Analyst of this report has not received any compensation from the companies mentioned in the report in the preceding twelve months compensation of our Research Analysts is not based on any specific merchant banking, investment banking or brokerage service transactions.

The Research analysts for this report certifies that all of the views expressed in this report accurately reflect his or her personal views about the subject company or companies and its or their securities, and no part of his or her compensation was, is or will be, directly or indirectly related to specific recommendations or views expressed in this report.

The research analysts for this report has not served as an officer, director or employee of the subject company PL or its research analysts have not engaged in market making activity for the subject company

Our sales people, traders, and other professionals or affiliates may provide oral or written market commentary or trading strategies to our clients that reflect opinions that are contrary to the opinions expressed herein, and our proprietary trading and investing businesses may make investment decisions that are inconsistent with the recommendations expressed herein. In reviewing these materials, you should be aware that any or all of the foregoing, among other things, may give rise to real or potential conflicts of interest.

PL and its associates, their directors and employees may (a) from time to time, have a long or short position in, and buy or sell the securities of the subject company or (b) be engaged in any other transaction involving such securities and earn brokerage or other compensation or act as a market maker in the financial instruments of the subject company or act as an advisor or lender/borrower to the subject company or may have any other potential conflict of interests with respect to any recommendation and other related information and opinions.