

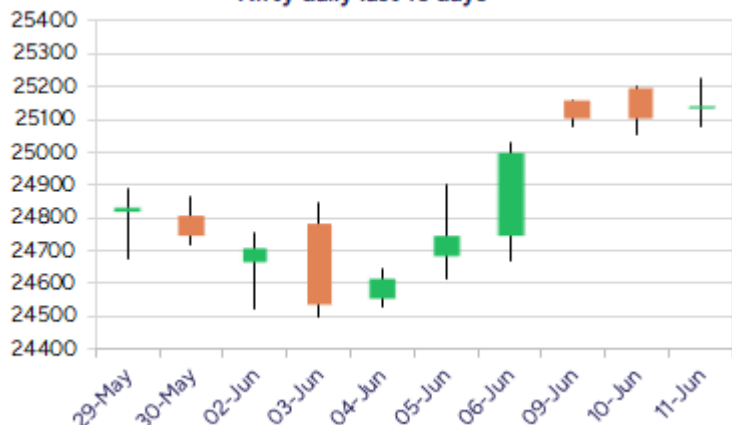
Date: 12<sup>th</sup> June 2025

\* Sensex 82515.14 +123.42

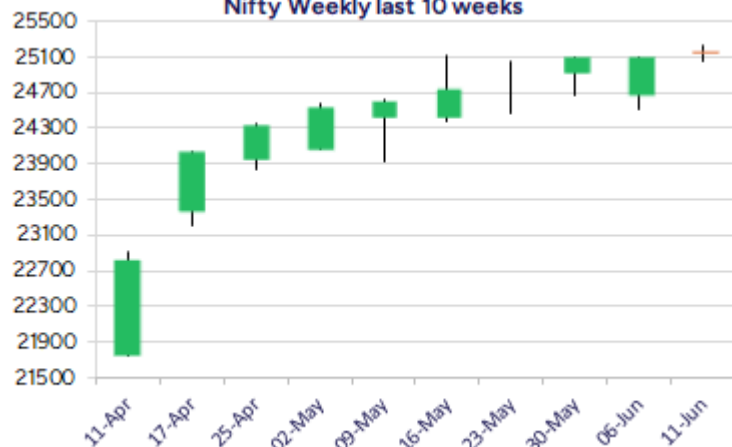
\* Nifty 25141.40 +37.15

\* Bank Nifty 56459.75 -169.35

Nifty daily last 10 days



Nifty Weekly last 10 weeks



\*Blue candle → Close rate > Open rate \* Red candle → Close rate < Open rate

## Market Preview

### Nifty ends flat amid volatility

Nifty has been finding resistance near the 25200 zone and once again witnessed profit booking to end near the 25150 zone with bias still maintained positive. BankNifty has been witnessing a gradual slide from the 57000 level with profit booking seen maintaining the bias intact till the time 56000 zone is sustained. The market breadth was strong once again with the advance decline indicating a ratio of 3:2 at close.

## Market Forecast

### Nifty daily range 25000-25300

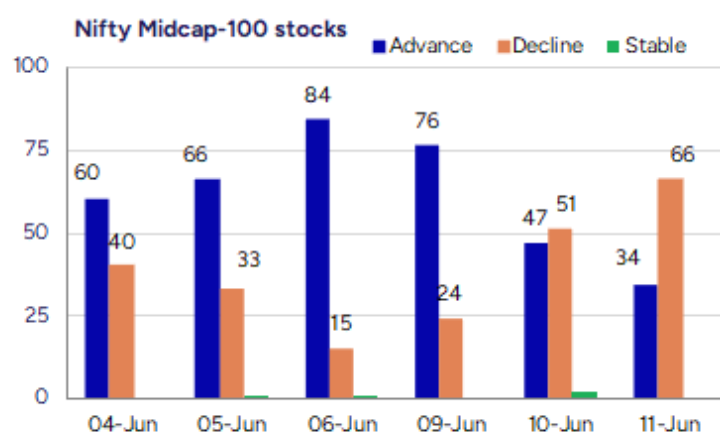
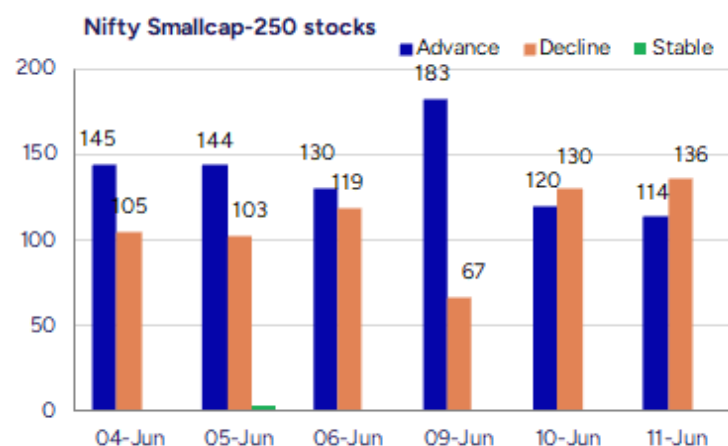
Nifty after consolidating since the last two days, witnessed a volatile session with the initial half progressed ahead to scale the 26200 zone while post lunch session succumbed to profit booking to end near the 25150 level with sentiment slightly turning cautious. The index has the 25000 zone as the near-term support while on the upside, the 25500 level can be expected in the coming sessions once there is a breach above the hurdle of 25200 levels with overall bias maintained strong. BankNifty, has witnessed another session of profit booking to slip further from the peak made near 57000 zone and with 55800-56000 band maintained as the important support from current level, the index is still in the strong territory but would need a decisive breach above the 57000 level to anticipate for fresh upward move in the coming days to maintain the positive bias intact.

The support for the day is seen at 25000 levels while the resistance is seen at 25300 levels. BankNifty would have the daily range of 56000-57200 levels.

Indices	Period	Closing	% Chng	Trend	Reversal	2 Sup	1 Sup	Pivot	1 Res	2 Res
Nifty	Daily	25141.40	0.15%	4	24987.80	25007	25074	25148	25215	25289
	Weekly	25003.05	1.02%	12	24797.10	24320	24662	24845	25187	25371
	Monthly	24750.70	1.71%	1	24390.40	23422	24086	24600	25265	25779
Bank Nifty	Daily	56459.75	-0.30%	-1	56484.20	56164	56312	56547	56695	56930
	Weekly	56578.40	1.49%	4	56058.75	54933	55756	56225	57047	57516
	Monthly	55749.70	1.20%	2	53879.10	52648	54199	55036	56587	57424
Sensex	Daily	82515.14	0.15%	5	82076.40	82061	82288	82536	82763	83010
	Weekly	82188.99	0.91%	12	81629.70	79977	81083	81691	82797	83404
	Monthly	81451.01	1.51%	1	80320.40	77296	79374	81046	83123	84796

**Gainers - Losers ( Nifty 500 Stocks )**

Gainers				Losers			
Company Name	Last Price	% Gain	Volume	Company Name	Last Price	% Loss	Volume
Karma Energy	69.55	20	135875	RNFI Services	243.5	-9.71	175800
Energy Dev	26.53	19.99	975531	Wealth First Po	1251.95	-8.77	26423
GTL	11.18	19.96	11302547	IEX	193.68	-7.78	71130460
Aditya Ultra	34.15	19.41	228000	Harsha Engineer	397.95	-7.69	1634468
Wockhardt	1831.1	18.4	8920878	Deccan Transcon	39.65	-7.58	69600
Viviana Power	1241.3	17.64	56500	Pil Italica	17.91	-6.72	809142
Sat Kartar Shop	220.55	17.35	458400	United Spirits	1503.8	-6.59	9784788



## Nifty Daily chart with RSI indicator



## BankNifty Daily chart with RSI indicator

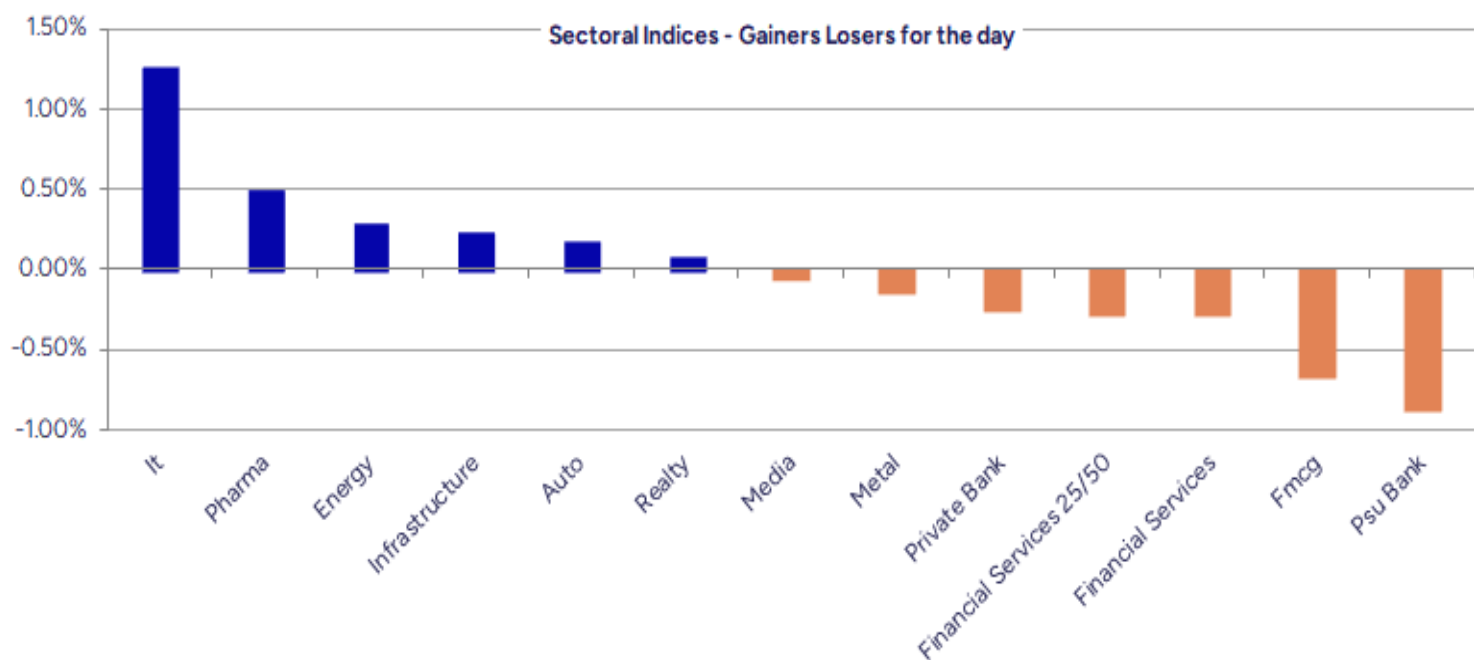


Breakouts - Cross above 200 DMA			
Company Name	LCP	Change %	200 DMA
Energy Dev	26.53	14.60	23.15
Aartech Solonic	73.14	8.44	67.45
Karma Energy	69.55	6.35	65.4
Dhani Services	71.09	5.74	67.23
Ind-Swift Labs	110.27	5.38	104.64
GM Breweries	794.25	4.81	757.8
Mohini Health &	61.7	4.77	58.89
TataTeleservice	75.85	4.35	72.69
Nureca	296.65	4.34	284.31
Dharmaj Crop	277.91	4.31	266.43
Timescan Logist	66.35	4.18	63.69
Lakshmi Finance	229.16	4.11	220.11
Neuland Lab	13630	3.91	13116.86
JISL	34.46	3.89	33.17
V-Mart Retail	3678.5	3.55	3552.33
Apex Frozen	245.08	3.51	236.77
Murudeshwar Cer	47.6	3.19	46.13
Caplin Labs	2116.2	3.14	2051.69

\* Stocks crossing above its Simple Moving Average (200DMA)

Breakdown - Cross below 200 DMA			
Company Name	LCP	Change %	200 DMA
DCX Systems	297.35	-3.76	308.98
Awfis Space Sol	667.3	-3.32	690.22
Somany Ceramics	560.2	-2.69	575.66
Apeejay Park	161.67	-2.04	165.03
Asian Granito	62.13	-1.97	63.38
Dhanlaxmi Bank	30.94	-1.93	31.55
Sylvan Plyboard	85.7	-1.75	87.23
Arvind Port	77.75	-1.74	79.13
R Systems Intl	420.15	-1.67	427.27
KRISHCA	281.8	-1.44	285.91
Zodiac Energy	491.35	-1.44	498.55
IRB Infra	52.16	-1.38	52.89
Info Edge	1505.9	-1.17	1523.75
Soma Textile	42.34	-1.14	42.83
Shanthi Gears	511	-1.14	516.9
EIH	372.7	-1.09	376.8
Linc	140.75	-1.08	142.29
Amrutanjan Heal	699.95	-1.01	707.08

\* Stocks crossing below its Simple Moving Average (200DMA)



Stocks witnessing a volume surge as compared to their 5 day average volume

Watch out for the stocks that have seen a huge spurt in its share price over the last three days

Volume Shockers - NSE					
Company name	LCP	% Chg	Volume	Avg Vol *	% Chg
Diamond Power	101.39	-2.46	3282350	6800	48167
Creative Eye	10.91	-1.62	1092031	4009	27138
Exxaro	10.37	10.08	8213396	51457	15862
United Polyfab	18.64	0.81	1400315	14703	9424
Oriental Carbon	315.95	4.57	1603571	18427	8602
GM Breweries	794.25	10.75	4634057	70718	6453
Atal	18.86	3.68	6397077	100889	6241
Sula Vineyards	320.8	8.01	11148401	198913	5505
GE Power India	333.35	1.72	3570702	64435	5442
HYBRIDFIN	21.4	3.58	1030683	20865	4840
TT	15.63	-1.94	2532365	56021	4420
Motisons Jewell	21.38	10.89	28210623	764990	3588
Rattan Power	15.24	6.65	575596468	1.6E+07	3502
Exicom Tele-Sys	210.12	12.18	6765603	189088	3478
Laxmi Goldorna	655.5	-1.63	37865	1094	3362
Rattanindia Ent	65.56	11.21	173882395	5531576	3043
Krishival Foods	350.25	2.11	37000	1200	2983
Sky Gold	372.95	0.53	736268	25989	2733
Wockhardt	1831.1	18.4	8920878	344655	2488
Balaxi Pharma	54.49	-0.82	905285	38449	2254

\* the Average Volume of last 5 days

Price Shockers - NSE				
Company name	LCP	Prv Close	% Chg	Volume
Oriental Carbon	315.95	209.83	50.57	1603571
Cinevista	21.36	14.53	47.01	1600142
Rattanindia Ent	65.56	47.61	37.7	173882395
Energy Dev	26.53	19.27	37.68	975531
Hybrid Fin Ser	21.4	15.66	36.65	1030683
Rattan Power	15.24	11.19	36.19	575596468
Regency Ceramic	56.07	42.14	33.06	88817
Creative Eye	10.91	8.41	29.73	1092031
Airo Lam	122.91	95.17	29.15	62902
GTL	11.18	8.86	26.19	11302547
Coffee Day	37.33	30.07	24.14	3333247
Williamson Mago	38.08	30.72	23.96	56159
Aditya Ultra	34.15	27.55	23.96	228000
Karma Energy	69.55	56.42	23.27	135875
GE Power India	333.35	272.65	22.26	3570702
GOCL Corp	384.9	316.15	21.75	281142
Wockhardt	1831.1	1505.4	21.64	8920878
United Polyfab	18.64	15.35	21.43	1400315
VIP Industries	413.6	342.7	20.69	10895916
Orient Bell	317.51	263.58	20.46	25296

\* the % price rise of the last 3 days



Symbol	LTP	Chng	% Chng	Volume (lacs)	Turnover (crs.)	52w High	Diff with 52w H	52w Low	Diff with 52w L	365 days % chng	30 days % chng
NIFTY 50	25141.40	37.15	0.15%	3012.11	25868.61	26277.35	4.32%	21743.65	15.63%	4.57%	7.93%
ADANIENT	2584.10	-29.00	-1.11%	7.45	193.53	3345.00	22.75%	2025.00	27.61%	16.09%	-18.85%
ADANIPTS	1458.40	-15.40	-1.04%	21.93	320.46	1604.95	9.13%	995.65	46.48%	12.82%	6.48%
APOLLOHOSP	6932.00	13.50	0.20%	5.27	363.46	7545.35	8.13%	5992.05	15.69%	2.92%	14.23%
ASIANPAINT	2207.60	-11.30	-0.51%	14.31	316.83	3394.90	34.97%	2124.75	3.90%	-3.51%	-24.46%
AXISBANK	1229.80	-3.00	-0.24%	41.36	509.84	1339.65	8.20%	933.50	31.74%	7.10%	2.73%
BAJAJ-AUTO	8732.50	106.50	1.23%	4.62	403.31	12774.00	31.64%	7089.35	23.18%	12.28%	-11.37%
BAJAJFINSV	2012.00	13.90	0.70%	22.46	451.62	2135.00	5.76%	1523.25	32.09%	1.43%	27.61%
BAJFINANCE	9426.00	-71.50	-0.75%	11.86	1122.28	9788.00	3.70%	6425.00	46.71%	9.91%	33.98%
BEL	392.25	-5.15	-1.30%	180.39	711.83	401.85	2.39%	240.25	63.27%	25.82%	40.23%
BHARTIARTL	1857.50	0.40	0.02%	89.07	1654.55	1917.00	3.10%	1372.85	35.30%	0.47%	30.23%
CIPLA	1527.50	16.70	1.11%	10.46	159.00	1702.05	10.26%	1335.00	14.42%	2.08%	-1.53%
COALINDIA	402.70	3.15	0.79%	119.46	484.02	543.55	25.91%	349.25	15.30%	4.48%	-16.36%
DRREDDY	1352.50	3.70	0.27%	10.94	147.62	1421.49	4.85%	1020.00	32.60%	16.69%	-77.91%
EICHERMOT	5351.00	-26.50	-0.49%	3.67	197.36	5906.50	9.40%	4508.75	18.68%	1.00%	12.44%
GRASIM	2713.00	5.00	0.18%	8.12	220.62	2877.75	5.72%	2276.95	19.15%	2.78%	10.68%
HCLTECH	1721.30	53.20	3.19%	50.85	868.59	2012.20	14.46%	1302.75	32.13%	6.29%	17.58%
HDFCBANK	1947.90	-17.40	-0.89%	55.47	1085.18	1996.30	2.42%	1552.20	25.49%	4.00%	25.88%
HDFCLIFE	763.50	1.05	0.14%	15.30	117.29	791.10	3.49%	561.30	36.02%	6.85%	33.95%
HEROMOTOCO	4410.00	31.00	0.71%	12.41	551.70	6246.25	29.40%	3344.00	31.88%	13.63%	-23.47%
HINDALCO	655.30	-3.05	-0.46%	39.28	258.29	772.65	15.19%	546.45	19.92%	4.97%	-2.67%
HINDUNILVR	2372.70	-22.50	-0.94%	19.77	471.42	3035.00	21.82%	2136.00	11.08%	2.67%	-6.63%
ICICIBANK	1430.30	7.40	0.52%	71.37	1020.61	1471.60	2.81%	1099.45	30.09%	2.45%	26.62%
INDUSINDBK	836.00	-9.05	-1.07%	23.59	198.84	1550.00	46.06%	606.00	37.95%	3.28%	-43.13%
INFY	1628.00	32.00	2.01%	105.97	1714.23	2006.45	18.86%	1307.00	24.56%	5.86%	6.42%
ITC	425.55	-1.45	-0.34%	207.87	886.50	528.50	19.48%	390.15	9.07%	0.81%	-2.27%
JIOFIN	302.60	-0.20	-0.07%	175.47	530.95	368.30	17.84%	198.65	52.33%	21.92%	-13.57%
JSWSTEEL	1006.05	2.95	0.29%	10.03	101.27	1074.90	6.41%	854.15	17.78%	4.82%	9.52%
KOTAKBANK	2148.50	-2.60	-0.12%	17.82	382.78	2301.90	6.66%	1679.05	27.96%	2.28%	23.23%
LT	3685.00	5.20	0.14%	12.66	466.02	3963.50	7.03%	2965.30	24.27%	6.85%	3.84%
M&M	3082.00	14.50	0.47%	17.50	541.69	3270.95	5.78%	2425.00	27.09%	2.86%	9.26%
MARUTI	12481.00	-39.00	-0.31%	3.06	381.74	13680.00	8.76%	10725.00	16.37%	2.20%	-1.55%
NESTLEIND	2410.00	-21.40	-0.88%	8.76	212.58	2778.00	13.25%	2110.00	14.22%	4.56%	-4.58%
NTPC	338.15	-1.05	-0.31%	108.05	367.94	448.45	24.60%	292.80	15.49%	1.33%	-7.04%
ONGC	247.45	2.77	1.13%	208.37	517.07	345.00	28.28%	205.00	20.71%	4.14%	-5.58%
POWERGRID	295.10	-5.95	-1.98%	109.40	324.76	366.25	19.43%	247.30	19.33%	0.58%	-4.67%
RELIANCE	1448.00	9.50	0.66%	81.95	1193.30	1608.80	10.00%	1114.85	29.88%	4.45%	-51.12%
SBILIFE	1800.00	14.50	0.81%	10.90	195.47	1936.00	7.02%	1372.55	31.14%	5.04%	24.66%
SBIN	814.40	-2.65	-0.32%	71.97	588.17	899.00	9.41%	680.00	19.76%	4.85%	-1.77%
SHRIRAMFIN	684.60	-15.80	-2.26%	45.86	317.10	730.45	6.28%	493.35	38.77%	16.45%	-72.20%
SUNPHARMA	1692.00	3.20	0.19%	20.00	337.49	1960.35	13.69%	1460.90	15.82%	-3.21%	11.61%
TATACONSUM	1103.50	-11.60	-1.04%	8.62	95.45	1250.10	11.73%	882.90	24.99%	0.13%	-1.58%
TATAMOTORS	734.60	2.35	0.32%	126.25	930.22	1179.00	37.69%	535.75	37.12%	3.35%	-24.91%
TATASTEEL	156.09	0.41	0.26%	176.04	275.56	184.60	15.44%	122.62	27.30%	9.03%	-13.65%
TCS	3470.80	7.90	0.23%	28.47	988.31	4592.25	24.42%	3056.05	13.57%	0.66%	-10.26%
TECHM	1638.00	27.10	1.68%	26.61	434.50	1807.70	9.39%	1209.40	35.44%	7.85%	20.19%
TITAN	3534.70	10.50	0.30%	5.05	178.08	3867.00	8.59%	2925.00	20.84%	0.40%	2.98%
TRENT	5782.50	-31.50	-0.54%	5.45	315.93	8345.00	30.71%	4488.00	28.84%	13.71%	16.99%
ULTRACEMCO	11457.00	66.00	0.58%	2.38	272.40	12339.00	7.15%	10047.85	14.02%	0.24%	5.22%
WIPRO	259.00	4.13	1.62%	172.65	445.88	324.60	20.21%	228.00	13.60%	5.31%	-46.37%
ETERNAL	257.10	1.42	0.56%	405.54	1044.96	304.70	15.62%	179.33	43.37%	12.56%	#VALUE!

## Disclaimer / Disclosures

### ANALYST CERTIFICATION

I, Mrs. Vaishali Parekh B.com, Research Analyst, author and the name subscribed to this report, hereby certify that all of the views expressed in this research report accurately reflect our views about the subject issuer(s) or securities. We also certify that no part of our compensation was, is, or will be directly or indirectly related to the specific recommendation(s) or view(s) in this report.

Terms & conditions and other disclosures:

Prabhudas Lilladher Pvt. Ltd, Mumbai, India (hereinafter referred to as "PL") is engaged in the business of Stock Broking, Portfolio Manager, Depository Participant and distribution for third party financial products. PL is a subsidiary of Prabhudas Lilladher Advisory Services Pvt Ltd. which has its various subsidiaries engaged in business of commodity broking, investment banking, financial services (margin funding) and distribution of third party financial/other products, details in respect of which are available at [www.plindia.com](http://www.plindia.com)

This document has been prepared by the Research Division of PL and is meant for use by the recipient only as information and is not for circulation. This document is not to be reported or copied or made available to others without prior permission of PL. It should not be considered or taken as an offer to sell or a solicitation to buy or sell any security.

The information contained in this report has been obtained from sources that are considered to be reliable. However, PL has not independently verified the accuracy or completeness of the same. Neither PL nor any of its affiliates, its directors or its employees accepts any responsibility of whatsoever nature for the information, statements and opinion given, made available or expressed herein or for any omission therein.

Recipients of this report should be aware that past performance is not necessarily a guide to future performance and value of investments can go down as well. The suitability or otherwise of any investments will depend upon the recipient's particular circumstances and, in case of doubt, advice should be sought from an independent expert/advisor.

Either PL or its affiliates or its directors or its employees or its representatives or its clients or their relatives may have position(s), make market, act as principal or engage in transactions of securities of companies referred to in this report and they may have used the research material prior to publication.

PL may from time to time solicit or perform investment banking or other services for any company mentioned in this document.

PL is registered as Research Analyst under Securities and Exchange Board of India (Research Analysts) Regulations, 2014 PL submits that no material disciplinary action has been taken on us by any Regulatory Authority impacting Equity Research Analysis activities.

PL or its research analysts or its associates or his relatives do not have any financial interest in the subject company.

PL or its research analysts or its associates or his relatives do not have actual/beneficial ownership of one per cent or more securities of the subject company at the end of the month immediately preceding the date of publication of the research report.

PL or its research analysts or its associates or his relatives do not have any material conflict of interest at the time of publication of the research report.

PL or its associates might have received compensation from the subject company in the past twelve months.

PL or its associates might have managed or co-managed public offering of securities for the subject company in the past twelve months or mandated by the subject company for any other assignment in the past twelve months.

PL or its associates might have received any compensation for investment banking or merchant banking or brokerage services from the subject company in the past twelve months.

PL or its associates might have received any compensation for products or services other than investment banking or merchant banking or brokerage services from the subject company in the past twelve months PL or its associates might have received any compensation or other benefits from the subject company or third party in connection with the research report.

PL encourages independence in research report preparation and strives to minimize conflict in preparation of research report. PL or its analysts did not receive any compensation or other benefits from the subject Company or third party in connection with the preparation of the research report. PL or its Research Analysts do not have any material conflict of interest at the time of publication of this report.

It is confirmed that Mrs.Vaishali Parekh B.com, Research Analyst of this report has not received any compensation from the companies mentioned in the report in the preceding twelve months compensation of our Research Analysts is not based on any specific merchant banking, investment banking or brokerage service transactions.

The Research analysts for this report certifies that all of the views expressed in this report accurately reflect his or her personal views about the subject company or companies and its or their securities, and no part of his or her compensation was, is or will be, directly or indirectly related to specific recommendations or views expressed in this report.

The research analysts for this report has not served as an officer, director or employee of the subject company PL or its research analysts have not engaged in market making activity for the subject company

Our sales people, traders, and other professionals or affiliates may provide oral or written market commentary or trading strategies to our clients that reflect opinions that are contrary to the opinions expressed herein, and our proprietary trading and investing businesses may make investment decisions that are inconsistent with the recommendations expressed herein. In reviewing these materials, you should be aware that any or all of the foregoing, among other things, may give rise to real or potential conflicts of interest.

PL and its associates, their directors and employees may (a) from time to time, have a long or short position in, and buy or sell the securities of the subject company or (b) be engaged in any other transaction involving such securities and earn brokerage or other compensation or act as a market maker in the financial instruments of the subject company or act as an advisor or lender/borrower to the subject company or may have any other potential conflict of interests with respect to any recommendation and other related information and opinions.