

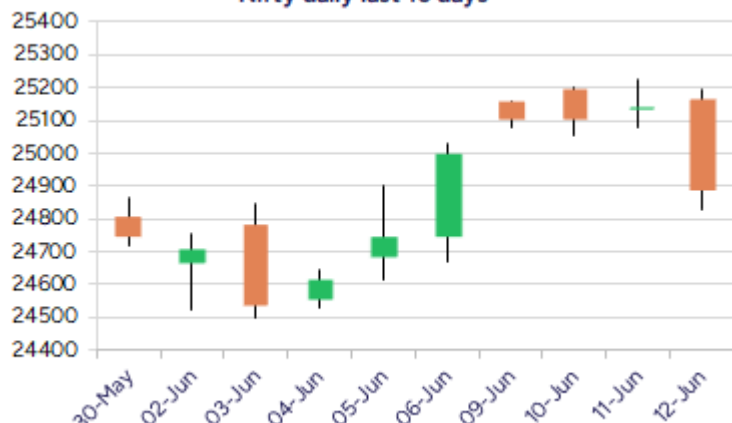
Date: 13th June 2025

* Sensex 81691.98 - 823.16

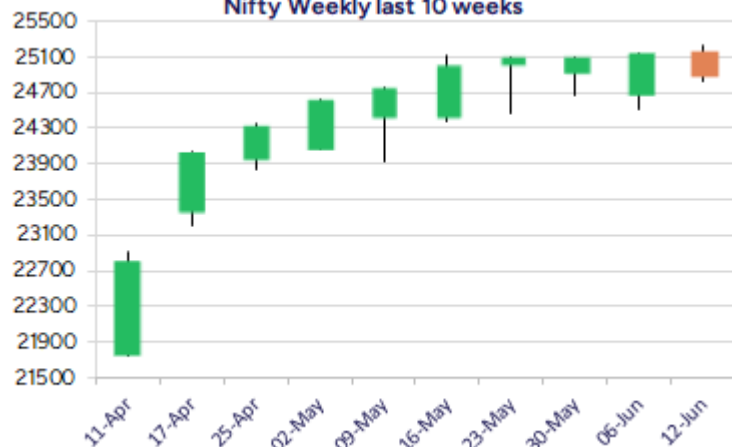
* Nifty 24888.20 - 253.20

* Bank Nifty 56082.55 - 377.20

Nifty daily last 10 days



Nifty Weekly last 10 weeks



*Blue candle → Close rate > Open rate * Red candle → Close rate < Open rate

Market Preview

Nifty ends below 25000 zone; bias weakens

Nifty finally gave in below the 25000 zone with profit booking dragged the index to lose steam and ended in the red with bias turned little bit weak. BankNifty slipped down further to extend the losses and once again has arrived near the important support zone at 56000 level with sentiment turned little bit cautious. The market breadth turned weak as the day progressed with the advance decline indicating a ratio of at close.

Market Forecast

Nifty daily range 24700-25100

Nifty after witnessing tough resistance near the 25200 zone finally tanked below the 25000 level with heavy profit booking post the lunch session dragged the index to 24850 zone with bias and sentiment turned little bit weak. The index has got the next major support positioned near 24500 zone and from here on, for the bias to improve, would once again need a decent revival and a decisive breach above the 25200 level to anticipate for further rise in the coming days.

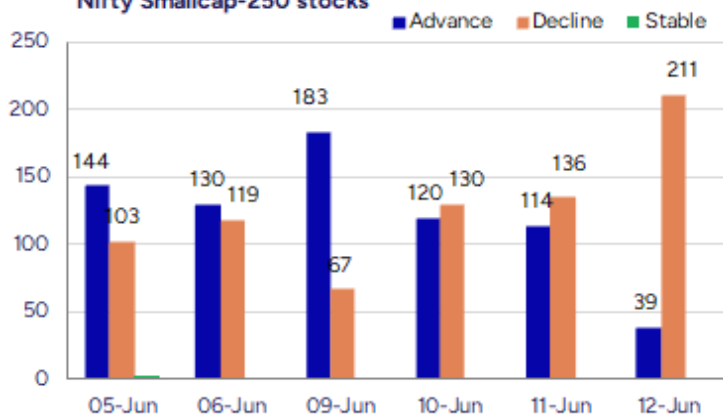
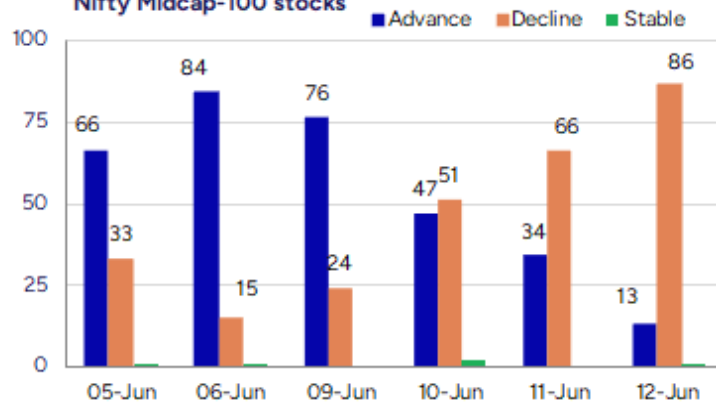
BankNifty, once again continued with the erosion from the peak made near 57000 zone and has slipped towards the 56000 level where the crucial support zone is positioned as of now which needs to be sustained to maintain the overall trend intact. The index after the recent breakout witnessed, has fizzled out in the last four sessions and with the sentiment turning cautious once again, can keep a check for the crucial zone near 56000 level and if a revival is confirmed then can expect for further rise in the coming days.

The support for the day is seen at 24700 levels while the resistance is seen at 25100 levels. BankNifty would have the daily range of 55500-56700 levels.

Indices	Period	Closing	% Chng	Trend	Reversal	2 Sup	1 Sup	Pivot	1 Res	2 Res
Nifty	Daily	24888.20	-1.01%	-1	25049.40	24600	24744	24970	25114	25340
	Weekly	25003.05	1.02%	12	24797.10	24320	24662	24845	25187	25371
	Monthly	24750.70	1.71%	1	24390.40	23422	24086	24600	25265	25779
Bank Nifty	Daily	56082.55	-0.67%	-2	56700.45	55578	55830	56221	56473	56863
	Weekly	56578.40	1.49%	4	56058.75	54933	55756	56225	57047	57516
	Monthly	55749.70	1.20%	2	53879.10	52648	54199	55036	56587	57424
Sensex	Daily	81691.98	-1.00%	-1	82255.15	80821	81256	81959	82394	83097
	Weekly	82188.99	0.91%	12	81629.70	79977	81083	81691	82797	83404
	Monthly	81451.01	1.51%	1	80320.40	77296	79374	81046	83123	84796

Gainers - Losers (Nifty 500 Stocks)

Gainers				Losers			
Company Name	Last Price	% Gain	Volume	Company Name	Last Price	% Loss	Volume
Karma Energy	83.46	20	638654	Cinevista	19.29	-9.69	458995
Hubtown	227.01	19.28	8171921	C. E. Info Syst	1770.4	-9.36	2394605
Lancor Holdings	23.19	14.58	2094544	Antarctica	1.38	-8.61	4379857
Expleo Solution	1248.4	13.26	848722	Rattan Power	14.01	-8.07	247807604
Premier Road	103.45	11.24	177000	Rattanindia Ent	60.92	-7.08	29011774
Sterlite Techno	85.59	11.2	37219221	One 97 Paytm	895.4	-6.77	24670052
Oriental Trimex	16.84	10.79	4672552	One Point One S	58.91	-6.74	7857178

Nifty Smallcap-250 stocks

Nifty Midcap-100 stocks


Nifty Daily chart with RSI indicator



BankNifty Daily chart with RSI indicator

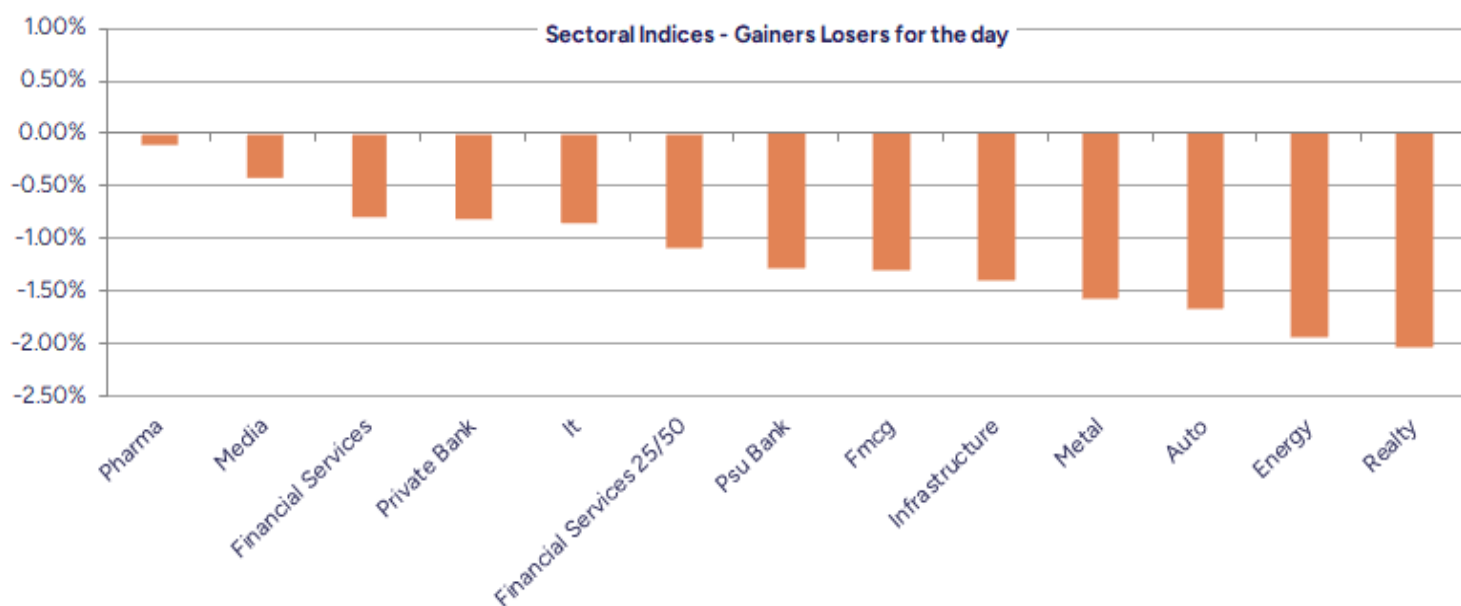


Breakouts - Cross above 200 DMA			
Company Name	LCP	Change %	200 DMA
TCI Finance	14.8	9.87	13.47
Expleo Solution	1248.4	8.01	1155.78
Landmark Prop	10.05	7.37	9.36
Innova Captab	945.45	7.14	882.47
Sree Rayalaseem	671.1	5.01	639.06
Tasty Bite	10948	3.20	10608.43
Arvind Port	81.55	2.92	79.24
Tanla Platforms	679.2	2.81	660.63
Greenply Ind	329.9	2.69	321.25
Rainbow Childre	1458.2	2.50	1422.61
Soma Textile	43.93	2.45	42.88
Asian Granito	64.62	2.18	63.24
Shanthi Gears	522.95	1.27	516.41
Fusion Finance	195.73	1.19	193.42
VIP Industries	416.75	0.70	413.85
Amines Plast	265.61	0.31	264.8
Avro India	173.6	0.23	173.2
Oil India	468.35	0.16	467.59

* Stocks crossing above its Simple Moving Average (200DMA)

Breakdown - Cross below 200 DMA			
Company Name	LCP	Change %	200 DMA
TGB Banquets	12.39	-5.85	13.16
Bang Overseas	55.16	-4.48	57.75
Sansera	1320.1	-3.50	1368.05
Rail Vikas	412.95	-3.41	427.52
Iris Clothings	58.04	-3.41	60.09
C E Info	1770.4	-3.36	1831.89
Orient Press	96.05	-3.12	99.14
CAMS	4072.7	-3.04	4200.51
Aban Offshore	54.08	-2.79	55.63
Kothari Petro	181.48	-2.73	186.58
CIEINDIA	458.6	-2.55	470.62
Welspun Enter	518.3	-2.49	531.53
Rain Industries	150.67	-2.42	154.41
VIP Clothing	39.61	-2.37	40.57
NFL	103.5	-2.34	105.98
GE Power India	318.85	-2.31	326.4
Greaves Cotton	207.03	-2.29	211.89
M&M Financial	274.25	-2.28	280.66

* Stocks crossing below its Simple Moving Average (200DMA)



Stocks witnessing a volume surge as compared to their 5 day average volume

Watch out for the stocks that have seen a huge spurt in its share price over the last three days

Volume Shockers - NSE					
Company name	LCP	% Chg	Volume	Avg Vol *	% Chg
Diamond Power	100.65	-0.73	1182690	6800	17291
Route	1097.5	6.86	7707769	88491	8610
RHI Magnesita	491	6.45	10186692	192099	5203
Laxmi Goldorna	661.4	0.9	54056	1094	4842
Shakti Pumps	988.75	2.48	1791819	38631	4538
Exxaro	10.13	-2.31	2062775	51457	3909
Karma Energy	83.46	20	617870	17075	3518
Sterling Wilson	328.35	2.08	19949850	581779	3329
NAVA	562.1	6.53	12144462	448488	2608
United Polyfab	19.18	2.9	397392	14703	2603
Creative Eye	11.36	4.12	104431	4009	2505
Krishana Phosch	494.45	8.74	659472	25704	2466
Energy Dev	28.1	5.92	3147375	123491	2449
Expleo Solution	1256.6	14.01	798308	33346	2294
Hubtown	225.49	18.49	7720417	343863	2145
Atal	18.55	-1.64	2115063	100889	1996
Sterlite Techno	86.34	12.17	34662013	1694993	1945
Motisons Jewell	20.85	-2.48	14246666	764990	1762
AstraZeneca	10180	2.11	113127	7428	1423
Sheela Foam	671.35	0.86	548711	37992	1344

* the Average Volume of last 5 days

Price Shockers - NSE				
Company name	LCP	Prv Close	% Chg	Volume
Karma Energy	83.46	57.24	45.81	638654
Energy Dev	27.96	20.01	39.73	3270345
GTL	12.12	9.21	31.6	18376279
Cinevista	19.29	15.24	26.57	458995
Oriental Trimex	16.84	13.64	23.46	4672552
Rattanindia Ent	60.92	49.9	22.08	29011774
Hybrid Fin Ser	22.47	18.79	19.58	60175
Oriental Carbon	300.15	251.79	19.21	52372
ALUWIND INFRA	84.5	71	19.01	325500
TCI Finance	14.8	12.49	18.49	78496
Digispice Tech	25.23	21.31	18.4	777027
Wockhardt	1784.5	1510	18.18	3462669
VIP Industries	416.75	353.05	18.04	2089774
Sindhu Trade	28.02	23.83	17.58	3083694
NELCO	1054.5	897.9	17.44	887331
Rattan Power	14.01	11.94	17.34	247807604
Suven Life Sci	260.57	222.16	17.29	3426024
Aartech Solonic	70.91	60.6	17.01	1418499
Ind-Swift Labs	110.26	94.29	16.94	749982
GE Power India	318.85	275.2	15.86	924297

* the % price rise of the last 3 days

Symbol	LTP	Chng	% Chng	Volume (lacs)	Turnover (crs.)	52w High	Diff with 52w H	52w Low	Diff with 52w L	365 days % chng	30 days % chng
NIFTY 50	24888.20	-253.20	-1.01%	3282.63	29569.16	26277.35	5.29%	21743.65	14.46%	0.87%	8.07%
ADANIENT	2536.00	-45.20	-1.75%	9.55	244.54	3345.00	24.19%	2025.00	25.23%	6.43%	-19.87%
ADANIPTS	1443.70	-12.70	-0.87%	21.91	317.98	1604.95	10.05%	995.65	45.00%	6.92%	3.77%
APOLLOHOSP	6994.00	66.50	0.96%	5.52	386.21	7545.35	7.31%	6001.00	16.55%	0.02%	13.42%
ASIANPAINT	2225.00	16.20	0.73%	34.17	764.44	3394.90	34.46%	2124.75	4.72%	-6.26%	-23.90%
AXISBANK	1211.70	-19.70	-1.60%	34.61	421.87	1339.65	9.55%	933.50	29.80%	2.36%	3.08%
BAJAJ-AUTO	8550.00	-169.00	-1.94%	3.68	317.69	12774.00	33.07%	7089.35	20.60%	8.45%	-11.15%
BAJAJFINSV	2022.10	9.20	0.46%	37.83	771.71	2135.00	5.29%	1523.25	32.75%	-1.83%	28.35%
BAJFINANCE	9369.00	-56.00	-0.59%	12.39	1168.35	9788.00	4.28%	6425.00	45.82%	4.51%	32.04%
BEL	386.50	-6.40	-1.63%	155.54	607.09	401.85	3.82%	240.25	60.87%	21.72%	37.28%
BHARTIARTL	1844.00	-16.20	-0.87%	73.46	1360.32	1917.00	3.81%	1372.85	34.32%	-0.57%	30.33%
CIPLA	1502.80	-18.90	-1.24%	11.99	181.59	1702.05	11.71%	1335.00	12.57%	0.67%	-0.56%
COALINDIA	392.00	-10.10	-2.51%	112.59	445.09	543.55	27.88%	349.25	12.24%	1.67%	-15.59%
DRREDDY	1356.30	5.20	0.38%	26.25	357.50	1421.49	4.59%	1020.00	32.97%	13.01%	-77.63%
EICHERMOT	5310.00	-42.00	-0.78%	3.37	179.97	5906.50	10.10%	4508.75	17.77%	-3.04%	12.47%
GRASIM	2684.30	-37.90	-1.39%	5.46	147.05	2877.75	6.72%	2276.95	17.89%	-0.75%	10.80%
HCLTECH	1702.40	-19.50	-1.13%	36.08	615.47	2012.20	15.40%	1302.75	30.68%	3.09%	20.51%
HDFCBANK	1940.00	-10.40	-0.53%	81.74	1590.05	1996.30	2.82%	1552.20	24.98%	-0.35%	24.64%
HDFCLIFE	754.50	-9.70	-1.27%	16.00	121.52	791.10	4.63%	565.00	33.54%	4.03%	33.67%
HEROMOTOCO	4350.10	-60.20	-1.36%	8.14	356.47	6246.25	30.36%	3344.00	30.09%	10.68%	-23.78%
HINDALCO	651.00	-4.20	-0.64%	65.39	427.84	772.65	15.74%	546.45	19.13%	0.50%	-2.64%
HINDUNILVR	2337.10	-39.30	-1.65%	33.39	782.50	3035.00	23.00%	2136.00	9.41%	-0.26%	-7.04%
ICICIBANK	1424.50	-6.50	-0.45%	79.53	1133.75	1471.60	3.20%	1099.45	29.56%	-1.21%	27.97%
INDUSINDBK	827.00	-9.30	-1.11%	27.42	228.68	1550.00	46.65%	606.00	36.47%	6.06%	-43.53%
INFY	1605.00	-26.10	-1.60%	104.80	1689.73	2006.45	20.01%	1307.00	22.80%	0.26%	9.05%
ITC	420.95	-5.20	-1.22%	185.07	780.57	528.50	20.35%	390.15	7.89%	-2.15%	-1.58%
JIOFIN	296.15	-6.50	-2.15%	161.68	483.25	368.30	19.59%	198.65	49.08%	15.12%	-13.59%
JSWSTEEL	996.80	-10.30	-1.02%	22.23	221.99	1074.90	7.27%	854.15	16.70%	0.19%	10.66%
KOTAKBANK	2122.20	-23.10	-1.08%	29.78	634.49	2301.90	7.81%	1679.05	26.39%	0.01%	24.73%
LT	3598.60	-86.20	-2.34%	23.35	846.93	3963.50	9.21%	2965.30	21.36%	2.72%	2.39%
M&M	3008.00	-72.70	-2.36%	22.78	691.63	3270.95	8.04%	2425.00	24.04%	-0.77%	8.65%
MARUTI	12360.00	-92.00	-0.74%	3.47	430.19	13680.00	9.65%	10725.00	15.24%	-1.30%	-3.20%
NESTLEIND	2380.10	-39.10	-1.62%	13.59	324.51	2778.00	14.32%	2110.00	12.80%	1.49%	-4.83%
NTPC	333.90	-4.20	-1.24%	118.81	399.43	448.45	25.54%	292.80	14.04%	-3.00%	-7.97%
ONGC	247.35	0.03	0.01%	356.12	893.89	345.00	28.30%	205.00	20.66%	1.35%	-9.59%
POWERGRID	288.75	-6.70	-2.27%	140.69	410.04	366.25	21.16%	247.30	16.76%	-4.40%	-6.67%
RELIANCE	1439.50	-9.40	-0.65%	88.28	1275.02	1608.80	10.52%	1114.85	29.12%	0.86%	-50.27%
SBILIFE	1762.70	-36.60	-2.03%	9.85	175.63	1936.00	8.95%	1372.55	28.43%	2.73%	26.00%
SBIN	804.00	-11.05	-1.36%	134.48	1088.20	899.00	10.57%	680.00	18.24%	1.67%	-2.45%
SHRIRAMFIN	668.40	-17.65	-2.57%	49.70	336.05	730.45	8.49%	493.35	35.48%	6.21%	-72.92%
SUNPHARMA	1684.70	-5.90	-0.35%	35.88	611.79	1960.35	14.06%	1460.90	15.32%	0.26%	12.73%
TATACONSUM	1081.00	-23.30	-2.11%	9.41	102.53	1250.10	13.53%	882.90	22.44%	-3.61%	-2.76%
TATAMOTORS	714.45	-21.95	-2.98%	125.82	907.05	1179.00	39.40%	535.75	33.36%	2.16%	-25.40%
TATASTEEL	152.60	-3.81	-2.44%	278.35	427.16	184.60	17.33%	122.62	24.45%	3.15%	-13.74%
TCS	3432.00	-39.90	-1.15%	40.60	1399.55	4592.25	25.27%	3056.05	12.30%	-4.10%	-9.87%
TECHM	1643.60	6.10	0.37%	23.16	380.25	1807.70	9.08%	1209.40	35.90%	4.09%	21.35%
TITAN	3448.90	-92.70	-2.62%	8.12	283.19	3867.00	10.81%	2925.00	17.91%	-0.60%	3.84%
TRENT	5620.00	-151.50	-2.62%	9.74	555.95	8345.00	32.65%	4488.00	25.22%	6.17%	17.73%
ULTRACEMCO	11299.00	-165.00	-1.44%	2.62	298.83	12339.00	8.43%	10047.85	12.45%	-2.32%	4.85%
WIPRO	259.06	0.14	0.05%	145.28	378.10	324.60	20.19%	228.00	13.62%	0.64%	-45.61%
ETERNAL	251.00	-6.07	-2.36%	242.98	615.52	304.70	17.62%	179.33	39.97%	7.34%	#VALUE!

Disclaimer / Disclosures

ANALYST CERTIFICATION

I, Mrs. Vaishali Parekh B.com, Research Analyst, author and the name subscribed to this report, hereby certify that all of the views expressed in this research report accurately reflect our views about the subject issuer(s) or securities. We also certify that no part of our compensation was, is, or will be directly or indirectly related to the specific recommendation(s) or view(s) in this report.

Terms & conditions and other disclosures:

Prabhudas Lilladher Pvt. Ltd, Mumbai, India (hereinafter referred to as "PL") is engaged in the business of Stock Broking, Portfolio Manager, Depository Participant and distribution for third party financial products. PL is a subsidiary of Prabhudas Lilladher Advisory Services Pvt Ltd. which has its various subsidiaries engaged in business of commodity broking, investment banking, financial services (margin funding) and distribution of third party financial/other products, details in respect of which are available at www.plindia.com

This document has been prepared by the Research Division of PL and is meant for use by the recipient only as information and is not for circulation. This document is not to be reported or copied or made available to others without prior permission of PL. It should not be considered or taken as an offer to sell or a solicitation to buy or sell any security.

The information contained in this report has been obtained from sources that are considered to be reliable. However, PL has not independently verified the accuracy or completeness of the same. Neither PL nor any of its affiliates, its directors or its employees accepts any responsibility of whatsoever nature for the information, statements and opinion given, made available or expressed herein or for any omission therein.

Recipients of this report should be aware that past performance is not necessarily a guide to future performance and value of investments can go down as well. The suitability or otherwise of any investments will depend upon the recipient's particular circumstances and, in case of doubt, advice should be sought from an independent expert/advisor.

Either PL or its affiliates or its directors or its employees or its representatives or its clients or their relatives may have position(s), make market, act as principal or engage in transactions of securities of companies referred to in this report and they may have used the research material prior to publication.

PL may from time to time solicit or perform investment banking or other services for any company mentioned in this document.

PL is registered as Research Analyst under Securities and Exchange Board of India (Research Analysts) Regulations, 2014 PL submits that no material disciplinary action has been taken on us by any Regulatory Authority impacting Equity Research Analysis activities.

PL or its research analysts or its associates or his relatives do not have any financial interest in the subject company.

PL or its research analysts or its associates or his relatives do not have actual/beneficial ownership of one per cent or more securities of the subject company at the end of the month immediately preceding the date of publication of the research report.

PL or its research analysts or its associates or his relatives do not have any material conflict of interest at the time of publication of the research report.

PL or its associates might have received compensation from the subject company in the past twelve months.

PL or its associates might have managed or co-managed public offering of securities for the subject company in the past twelve months or mandated by the subject company for any other assignment in the past twelve months.

PL or its associates might have received any compensation for investment banking or merchant banking or brokerage services from the subject company in the past twelve months.

PL or its associates might have received any compensation for products or services other than investment banking or merchant banking or brokerage services from the subject company in the past twelve months PL or its associates might have received any compensation or other benefits from the subject company or third party in connection with the research report.

PL encourages independence in research report preparation and strives to minimize conflict in preparation of research report. PL or its analysts did not receive any compensation or other benefits from the subject Company or third party in connection with the preparation of the research report. PL or its Research Analysts do not have any material conflict of interest at the time of publication of this report.

It is confirmed that Mrs.Vaishali Parekh B.com, Research Analyst of this report has not received any compensation from the companies mentioned in the report in the preceding twelve months compensation of our Research Analysts is not based on any specific merchant banking, investment banking or brokerage service transactions.

The Research analysts for this report certifies that all of the views expressed in this report accurately reflect his or her personal views about the subject company or companies and its or their securities, and no part of his or her compensation was, is or will be, directly or indirectly related to specific recommendations or views expressed in this report.

The research analysts for this report has not served as an officer, director or employee of the subject company PL or its research analysts have not engaged in market making activity for the subject company

Our sales people, traders, and other professionals or affiliates may provide oral or written market commentary or trading strategies to our clients that reflect opinions that are contrary to the opinions expressed herein, and our proprietary trading and investing businesses may make investment decisions that are inconsistent with the recommendations expressed herein. In reviewing these materials, you should be aware that any or all of the foregoing, among other things, may give rise to real or potential conflicts of interest.

PL and its associates, their directors and employees may (a) from time to time, have a long or short position in, and buy or sell the securities of the subject company or (b) be engaged in any other transaction involving such securities and earn brokerage or other compensation or act as a market maker in the financial instruments of the subject company or act as an advisor or lender/borrower to the subject company or may have any other potential conflict of interests with respect to any recommendation and other related information and opinions.