

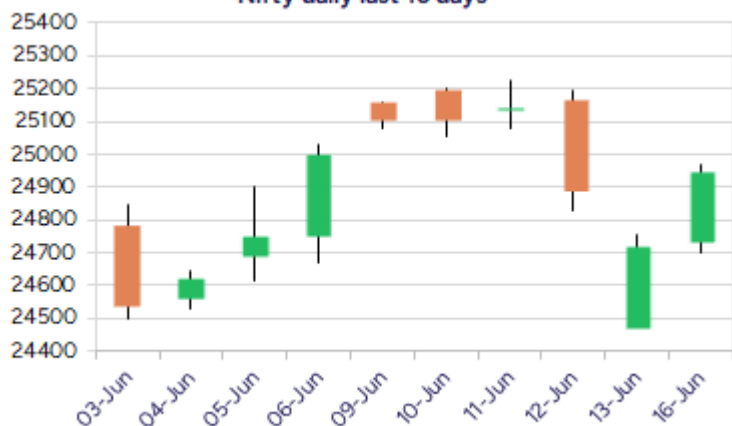
Date: 17<sup>th</sup> June 2025

\* Sensex 81796.15 + 677.55

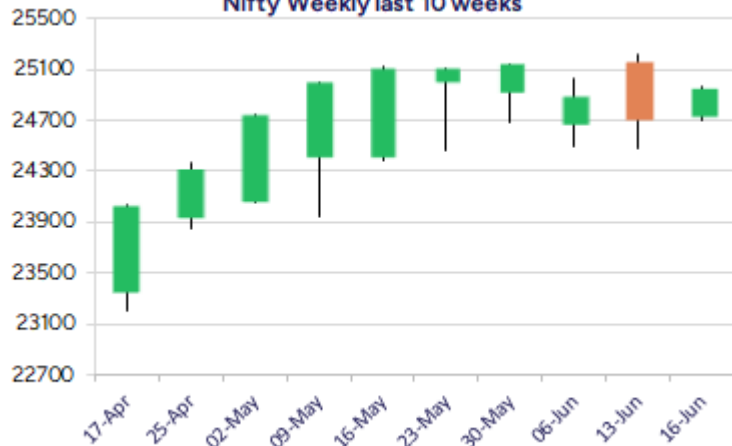
\* Nifty 24946.50 + 227.90

\* Bank Nifty 55944.90 + 417.55

Nifty daily last 10 days



Nifty Weekly last 10 weeks



\*Blue candle → Close rate > Open rate \* Red candle → Close rate < Open rate

## Market Preview

### Nifty witnesses strong recovery

Nifty witnessed a significant recovery amid the geo-political tensions looming around and closed near the 24950 zone gaining more than 200 points. BankNifty once again regained momentum to arrive near the 56000 zone with bias improving and anticipating for further rise in the coming sessions. The market breadth turned positive as the day progressed with the advance decline indicating a ratio of 3:2 at close.

## Market Forecast

### Nifty daily range 24800-25200

Nifty extended the gains further ahead with a steady rise as the day progressed and closed above the 24900 zone with sentiment much better placed and anticipating for further positive developments in the coming sessions. As mentioned earlier, the index would have the crucial and important support zone near the 24500 zone and a decisive move above the 25200 level shall trigger for fresh further rise in the coming days to strengthen the trend.

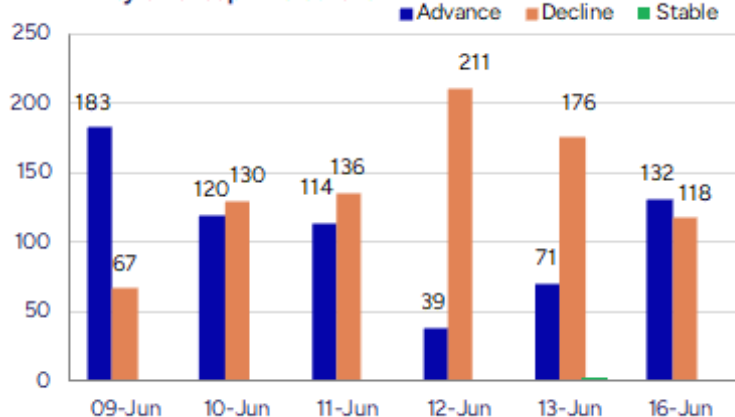
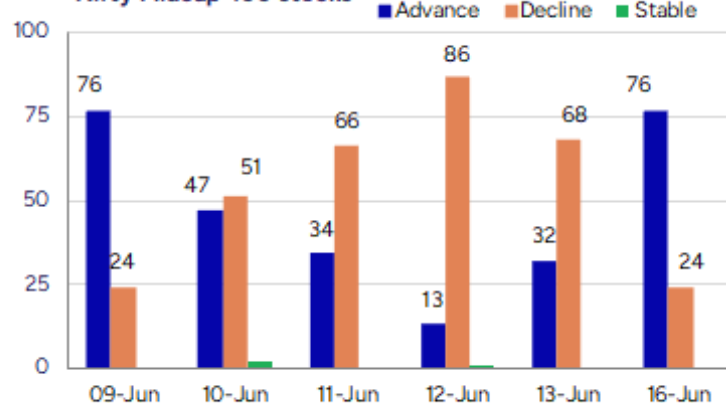
BankNifty, witnessed a significant recovery from the low made near 55150 zone in the previous session and ended with a much optimistic note near the 56000 zone with most of the banking stocks showing a decent bounce back and improving the bias to anticipate for further upward movement for the index. Once again a decisive move above the 56000 zone is confirmed, it shall turn the bias positive and with near-term support positioned near the 55000 level, one can expect the index to retest the peak zone of 57000 levels in the coming days.

The support for the day is seen at 24800 levels while the resistance is seen at 25200 levels. BankNifty would have the daily range of 55500-56500 levels.

Indices	Period	Closing	% Chng	Trend	Reversal	2 Sup	1 Sup	Pivot	1 Res	2 Res
Nifty	Daily	24946.50	0.92%	-3	25070.20	24609	24778	24872	25041	25136
	Weekly	24718.60	-1.14%	-1	24865.20	24055	24387	24804	25136	25553
	Monthly	24750.70	1.71%	1	24390.40	23422	24086	24600	25265	25779
Bank Nifty	Daily	55944.90	0.75%	-4	56649.45	55157	55551	55775	56169	56394
	Weekly	55527.35	-1.86%	-1	56270.45	54009	54768	55909	56668	57809
	Monthly	55749.70	1.20%	2	53879.10	52648	54199	55036	56587	57424
Sensex	Daily	81796.15	0.84%	-3	82237.65	80705	81250	81558	82104	82412
	Weekly	81118.60	-1.30%	-1	81900.95	79071	80095	81437	82460	83802
	Monthly	81451.01	1.51%	1	80320.40	77296	79374	81046	83123	84796

**Gainers - Losers ( Nifty 500 Stocks )**

Gainers				Losers			
Company Name	Last Price	% Gain	Volume	Company Name	Last Price	% Loss	Volume
DELPHI WORLD	162.03	20	299042	Karma Energy	75.8	-7.97	154875
United Drilling	243.99	20	1070901	Pranik Logistic	83.65	-6.8	315200
Touchwood Enter	115.78	19.99	226873	WOL 3D India	129.55	-6.46	25000
Sterlite Techno	99.38	19.26	67676784	Eleganz Interio	122.2	-5.75	142000
Subros	987.9	18.81	5319426	Vimta Labs	485.7	-5.48	270283
KDDL	2949.6	18.27	299458	NIBE	1790.7	-5.24	266015
Bulkcorp Intern	60.75	12.81	4800	Sharp Chucks	78.45	-5.2	36000

**Nifty Smallcap-250 stocks**

**Nifty Midcap-100 stocks**


## Nifty Daily chart with RSI indicator



## BankNifty Daily chart with RSI indicator



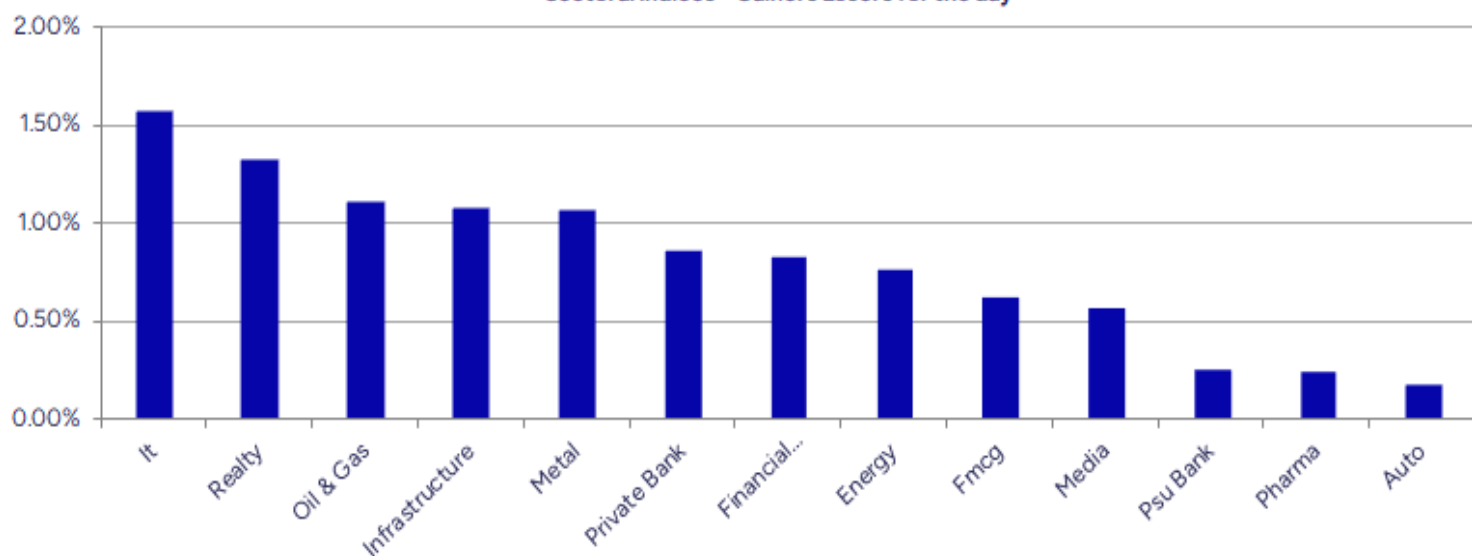
Breakouts - Cross above 200 DMA			
Company Name	LCP	Change %	200 DMA
Omaxe	106.61	8.77	98.01
STL Global	17.11	6.67	16.04
KDDL	2949.6	5.16	2804.92
Esprit Stones	115	4.56	109.98
Ruby Mills	244.57	4.17	234.79
Bharat Wire Rop	219.27	3.83	211.18
Ganesh Green	430.5	3.69	415.17
Newgen Software	1233.6	3.30	1194.14
Reliable Data S	79.15	3.17	76.72
Apeejay Park	169.63	2.96	164.75
United Drilling	243.99	2.78	237.4
Orient Bell	308.6	2.63	300.69
FDC	490.25	2.48	478.37
VIP Industries	423.55	2.47	413.33
RHI Magnesita	518.6	2.21	507.38
Repro India	538.55	1.90	528.51
Rainbow Childre	1450.4	1.80	1424.77
GMR Airports	83.57	1.74	82.14

\* Stocks crossing above its Simple Moving Average (200DMA)

Breakdown - Cross below 200 DMA			
Company Name	LCP	Change %	200 DMA
Simbhaoli Sugar	18.58	-3.08	19.17
Neuland Lab	12832	-2.34	13138.86
Wealth First Po	1191.6	-1.98	1215.7
Kothari Petro	183.15	-1.78	186.46
Positron Energy	349.15	-1.73	355.31
Archidply Decor	91.33	-1.46	92.68
Magadh Sugar	683.85	-1.37	693.33
CMS Info System	488.75	-1.23	494.84
Manugraph Ind	20.49	-1.16	20.73
Aegis Logistics	775.25	-1.12	784.05
Triveni Engg	413.1	-0.97	417.15
Nitin Spinners	386.8	-0.91	390.36
NDTV	153.53	-0.87	154.88
EPL	237.08	-0.81	239.02
Digicontent	46.35	-0.39	46.53
Pidilite Ind	2998.8	-0.34	3009.05
Veto Switch	126.87	-0.27	127.21
Consol Finvest	200.54	-0.25	201.05

\* Stocks crossing below its Simple Moving Average (200DMA)

Sectoral Indices - Gainers Losers for the day



Stocks witnessing a volume surge as compared to their 5 day average volume

Watch out for the stocks that have seen a huge spurt in its share price over the last three days

Volume Shockers - NSE					
Company name	LCP	% Chg	Volume	Avg Vol *	% Chg
Art Nirman	67.72	11.36	839875	2051	40842
Diamond Power	101.48	0.9	2057054	6800	30149
Jai Balaji Ind	106.54	5.05	6347035	54390	11569
Touchwood Enter	115.78	19.99	226873	3929	5674
Laxmi Goldorna	730.4	9.78	59625	1094	5351
Atal	19.33	-0.31	4554600	100889	4414
Sterlite Techno	99.38	19.26	67676784	1694993	3893
Newgen Software	1233.6	5.68	4323113	114472	3677
AMJ Land	66.49	8.88	1158593	37825	2963
Balaxi Pharma	49.95	-3.92	1148871	38449	2888
KCK Industries	37	-5.13	392500	13600	2786
Shakti Pumps	995.65	1.75	1086233	38631	2712
Krebs Biochem	97.35	10.86	180390	6498	2676
United Drilling	243.99	20	1070901	40758	2527
Raj Oil Mills	60.89	-2.84	1406514	58982	2285
RHI Magnesita	518.6	3.07	4400598	192099	2191
Capri Global	171.35	0.13	22890565	1000204	2189
NAVA	573.75	3.43	9889850	448488	2105
BEW Engineering	174.65	4.99	23000	1125	1944
Sheela Foam	706.95	5.96	772315	37992	1933

\* the Average Volume of last 5 days

Price Shockers - NSE				
Company name	LCP	Prv Close	% Chg	Volume
Touchwood Enter	115.78	89.57	29.26	226873
Sterlite Techno	99.38	76.97	29.12	67676784
TCI Finance	17.09	13.46	26.97	59855
Subros	987.9	779.9	26.67	5319426
DELPHI WORLD	162.03	130.17	24.48	299042
Shyam Telecom	16.43	13.25	24	26563
United Drilling	243.99	202.81	20.3	1070901
Raj Oil Mills	60.89	51	19.39	1406514
Hubtown	223.96	190.31	17.68	1433805
Cyber Media	17.82	15.17	17.47	55685
Art Nirman	67.72	57.8	17.16	839875
KDDL	2949.6	2531	16.54	299458
Expleo Solution	1280.3	1102.2	16.16	233572
Mangalam Global	14.6	12.6	15.87	0
California Soft	14.36	12.41	15.71	120370
Sameera Agro	23.3	20.15	15.63	4000
Force Motors	13961	12106	15.32	182923
Hilton Metal	75.63	65.8	14.94	366109
NR Agarwal	359	314.35	14.2	57315
Tarapur Trans	27.8	24.66	12.73	57988

\* the % price rise of the last 3 days



Symbol	LTP	Chng	% Chng	Volume (lacs)	Turnover (crs.)	52w High	Diff with 52w H	52w Low	Diff with 52w L	365 days % chng	30 days % chng
NIFTY 50	24718.60	-169.60	-0.68%	3187.00	24837.67	26277.35	5.93%	21743.65	13.68%	1.26%	6.71%
ADANIENT	2506.00	-36.40	-1.43%	6.96	174.15	3345.00	25.08%	2025.00	23.75%	4.20%	-20.98%
ADANIPTS	1406.10	-32.70	-2.27%	33.80	476.08	1604.95	12.39%	995.65	41.22%	5.59%	3.72%
APOLLOHOSP	7000.00	3.50	0.05%	3.68	257.23	7545.35	7.23%	6001.00	16.65%	1.14%	13.42%
ASIANPAINT	2216.60	-2.80	-0.13%	17.87	393.62	3394.90	34.71%	2124.75	4.32%	-4.53%	-23.62%
AXISBANK	1207.00	-5.90	-0.49%	39.07	471.20	1339.65	9.90%	933.50	29.30%	1.62%	2.10%
BAJAJ-AUTO	8482.50	-84.50	-0.99%	2.51	211.59	12774.00	33.60%	7089.35	19.65%	6.25%	-13.50%
BAJAJFINSV	2015.00	-13.80	-0.68%	14.19	283.96	2135.00	5.62%	1523.25	32.28%	0.53%	28.48%
BAJFINANCE	9340.00	-28.50	-0.30%	10.18	945.26	9788.00	4.58%	6425.00	45.37%	3.61%	29.80%
BEL	395.15	7.75	2.00%	355.63	1398.22	401.85	1.67%	240.25	64.47%	15.38%	33.36%
BHARTIARTL	1840.10	-4.10	-0.22%	46.13	847.74	1917.00	4.01%	1372.85	34.04%	1.30%	28.21%
CIPLA	1507.80	5.00	0.33%	8.74	131.28	1702.05	11.41%	1335.00	12.94%	-1.14%	-2.48%
COALINDIA	391.30	-1.40	-0.36%	52.53	204.74	543.55	28.01%	349.25	12.04%	-0.62%	-19.64%
DRREDDY	1363.00	0.30	0.02%	14.20	193.05	1421.49	4.11%	1020.00	33.63%	12.89%	-77.51%
EICHERMOT	5323.00	7.50	0.14%	4.15	218.89	5906.50	9.88%	4508.75	18.06%	-1.91%	9.58%
GRASIM	2665.00	-24.10	-0.90%	5.39	143.75	2877.75	7.39%	2276.95	17.04%	-0.72%	9.75%
HCLTECH	1697.40	-3.80	-0.22%	19.88	336.81	2012.20	15.64%	1302.75	30.29%	5.04%	18.24%
HDFCBANK	1919.50	-23.90	-1.23%	60.59	1163.30	1996.30	3.85%	1566.40	22.54%	1.08%	23.46%
HDFCLIFE	752.00	-2.50	-0.33%	14.90	111.69	791.10	4.94%	565.00	33.10%	2.65%	31.74%
HEROMOTOCO	4338.90	-23.90	-0.55%	5.21	224.39	6246.25	30.54%	3344.00	29.75%	7.36%	-24.65%
HINDALCO	641.35	-9.70	-1.49%	45.44	292.15	772.65	16.99%	546.45	17.37%	2.57%	-3.39%
HINDUNILVR	2320.00	-12.70	-0.54%	17.41	402.96	3035.00	23.56%	2136.00	8.61%	-1.16%	-7.75%
ICICIBANK	1417.70	-7.50	-0.53%	75.73	1070.58	1471.60	3.66%	1099.45	28.95%	-0.38%	27.30%
INDUSINDBK	818.50	-11.40	-1.37%	31.64	259.28	1550.00	47.19%	606.00	35.07%	7.77%	-44.09%
INFY	1605.00	-3.60	-0.22%	69.68	1113.64	2006.45	20.01%	1307.00	22.80%	2.55%	8.31%
ITC	413.95	-7.05	-1.67%	178.73	744.04	528.50	21.67%	390.15	6.10%	-1.61%	-2.61%
JIOFIN	295.10	-0.90	-0.30%	169.08	494.86	368.30	19.88%	198.65	48.55%	10.70%	-17.99%
JSWSTEEL	987.10	-8.55	-0.86%	10.45	103.10	1074.90	8.17%	854.15	15.57%	0.58%	8.59%
KOTAKBANK	2106.00	-20.80	-0.98%	44.67	938.13	2301.90	8.51%	1679.05	25.43%	0.53%	23.96%
LT	3586.20	-17.70	-0.49%	19.81	705.82	3963.50	9.52%	2965.30	20.94%	1.03%	-0.73%
M&M	3005.90	-13.30	-0.44%	20.03	599.03	3270.95	8.10%	2425.00	23.95%	-1.13%	8.31%
MARUTI	12405.00	15.00	0.12%	3.85	476.56	13680.00	9.32%	10725.00	15.66%	-0.74%	-3.57%
NESTLEIND	2378.90	-6.70	-0.28%	4.15	98.23	2778.00	14.37%	2110.00	12.74%	0.65%	-5.98%
NTPC	332.20	-1.50	-0.45%	117.12	387.79	448.45	25.92%	292.80	13.46%	-2.28%	-10.13%
ONGC	251.05	3.17	1.28%	393.18	989.27	345.00	27.23%	205.00	22.46%	2.79%	-10.03%
POWERGRID	286.00	-3.00	-1.04%	160.28	456.71	366.25	21.91%	247.30	15.65%	-3.17%	-10.98%
RELIANCE	1427.50	-14.10	-0.98%	97.57	1389.35	1608.80	11.27%	1114.85	28.04%	1.83%	-50.74%
SBILIFE	1756.40	-9.60	-0.54%	17.74	309.71	1936.00	9.28%	1372.55	27.97%	1.49%	21.57%
SBIN	793.30	-12.65	-1.57%	113.77	901.45	899.00	11.76%	680.00	16.66%	0.52%	-3.95%
SHRIRAMFIN	668.05	-	#VALUE!	46.87	309.24	730.45	8.54%	493.35	35.41%	5.44%	-73.97%
SUNPHARMA	1688.00	0.60	0.04%	24.04	404.92	1960.35	13.89%	1460.90	15.55%	-0.74%	11.98%
TATACONSUM	1080.60	-4.50	-0.41%	6.14	66.01	1250.10	13.56%	882.90	22.39%	-2.99%	-3.52%
TATAMOTORS	713.75	-1.60	-0.22%	105.15	742.62	1179.00	39.46%	535.75	33.22%	1.08%	-27.65%
TATASTEEL	152.34	-0.55	-0.36%	242.77	368.30	184.60	17.48%	122.62	24.24%	2.32%	-16.10%
TCS	3447.40	13.20	0.38%	21.78	748.56	4592.25	24.93%	3056.05	12.81%	-2.30%	-10.37%
TECHM	1658.00	13.60	0.83%	25.11	415.29	1807.70	8.28%	1209.40	37.09%	4.57%	19.98%
TITAN	3420.00	-32.70	-0.95%	8.22	281.13	3867.00	11.56%	2925.00	16.92%	-3.10%	2.08%
TRENT	5617.50	-10.00	-0.18%	7.12	395.48	8345.00	32.68%	4488.00	25.17%	5.65%	11.92%
ULTRACEMCO	11215.00	-108.00	-0.95%	1.81	202.64	12339.00	9.11%	10047.85	11.62%	-2.90%	2.52%
WIPRO	260.59	0.98	0.38%	86.92	225.73	324.60	19.72%	228.00	14.29%	3.20%	-45.56%
ETERNAL	249.50	-2.06	-0.82%	305.13	758.12	304.70	18.12%	179.33	39.13%	8.59%	#VALUE!

## Disclaimer / Disclosures

### ANALYST CERTIFICATION

I, Mrs. Vaishali Parekh B.com, Research Analyst, author and the name subscribed to this report, hereby certify that all of the views expressed in this research report accurately reflect our views about the subject issuer(s) or securities. We also certify that no part of our compensation was, is, or will be directly or indirectly related to the specific recommendation(s) or view(s) in this report.

Terms & conditions and other disclosures:

Prabhudas Lilladher Pvt. Ltd, Mumbai, India (hereinafter referred to as "PL") is engaged in the business of Stock Broking, Portfolio Manager, Depository Participant and distribution for third party financial products. PL is a subsidiary of Prabhudas Lilladher Advisory Services Pvt Ltd. which has its various subsidiaries engaged in business of commodity broking, investment banking, financial services (margin funding) and distribution of third party financial/other products, details in respect of which are available at [www.plindia.com](http://www.plindia.com)

This document has been prepared by the Research Division of PL and is meant for use by the recipient only as information and is not for circulation. This document is not to be reported or copied or made available to others without prior permission of PL. It should not be considered or taken as an offer to sell or a solicitation to buy or sell any security.

The information contained in this report has been obtained from sources that are considered to be reliable. However, PL has not independently verified the accuracy or completeness of the same. Neither PL nor any of its affiliates, its directors or its employees accepts any responsibility of whatsoever nature for the information, statements and opinion given, made available or expressed herein or for any omission therein.

Recipients of this report should be aware that past performance is not necessarily a guide to future performance and value of investments can go down as well. The suitability or otherwise of any investments will depend upon the recipient's particular circumstances and, in case of doubt, advice should be sought from an independent expert/advisor.

Either PL or its affiliates or its directors or its employees or its representatives or its clients or their relatives may have position(s), make market, act as principal or engage in transactions of securities of companies referred to in this report and they may have used the research material prior to publication.

PL may from time to time solicit or perform investment banking or other services for any company mentioned in this document.

PL is registered as Research Analyst under Securities and Exchange Board of India (Research Analysts) Regulations, 2014 PL submits that no material disciplinary action has been taken on us by any Regulatory Authority impacting Equity Research Analysis activities.

PL or its research analysts or its associates or his relatives do not have any financial interest in the subject company.

PL or its research analysts or its associates or his relatives do not have actual/beneficial ownership of one per cent or more securities of the subject company at the end of the month immediately preceding the date of publication of the research report.

PL or its research analysts or its associates or his relatives do not have any material conflict of interest at the time of publication of the research report.

PL or its associates might have received compensation from the subject company in the past twelve months.

PL or its associates might have managed or co-managed public offering of securities for the subject company in the past twelve months or mandated by the subject company for any other assignment in the past twelve months.

PL or its associates might have received any compensation for investment banking or merchant banking or brokerage services from the subject company in the past twelve months.

PL or its associates might have received any compensation for products or services other than investment banking or merchant banking or brokerage services from the subject company in the past twelve months PL or its associates might have received any compensation or other benefits from the subject company or third party in connection with the research report.

PL encourages independence in research report preparation and strives to minimize conflict in preparation of research report. PL or its analysts did not receive any compensation or other benefits from the subject Company or third party in connection with the preparation of the research report. PL or its Research Analysts do not have any material conflict of interest at the time of publication of this report.

It is confirmed that Mrs.Vaishali Parekh B.com, Research Analyst of this report has not received any compensation from the companies mentioned in the report in the preceding twelve months compensation of our Research Analysts is not based on any specific merchant banking, investment banking or brokerage service transactions.

The Research analysts for this report certifies that all of the views expressed in this report accurately reflect his or her personal views about the subject company or companies and its or their securities, and no part of his or her compensation was, is or will be, directly or indirectly related to specific recommendations or views expressed in this report.

The research analysts for this report has not served as an officer, director or employee of the subject company PL or its research analysts have not engaged in market making activity for the subject company

Our sales people, traders, and other professionals or affiliates may provide oral or written market commentary or trading strategies to our clients that reflect opinions that are contrary to the opinions expressed herein, and our proprietary trading and investing businesses may make investment decisions that are inconsistent with the recommendations expressed herein. In reviewing these materials, you should be aware that any or all of the foregoing, among other things, may give rise to real or potential conflicts of interest.

PL and its associates, their directors and employees may (a) from time to time, have a long or short position in, and buy or sell the securities of the subject company or (b) be engaged in any other transaction involving such securities and earn brokerage or other compensation or act as a market maker in the financial instruments of the subject company or act as an advisor or lender/borrower to the subject company or may have any other potential conflict of interests with respect to any recommendation and other related information and opinions.