

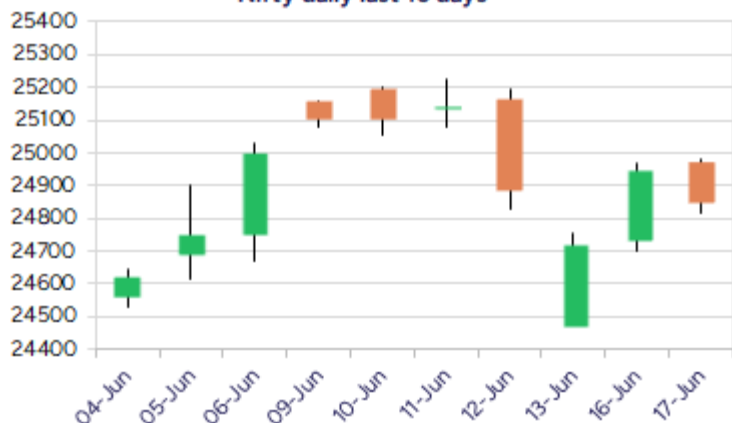
Date: 18th June 2025

* Sensex 81583.30 -212.85

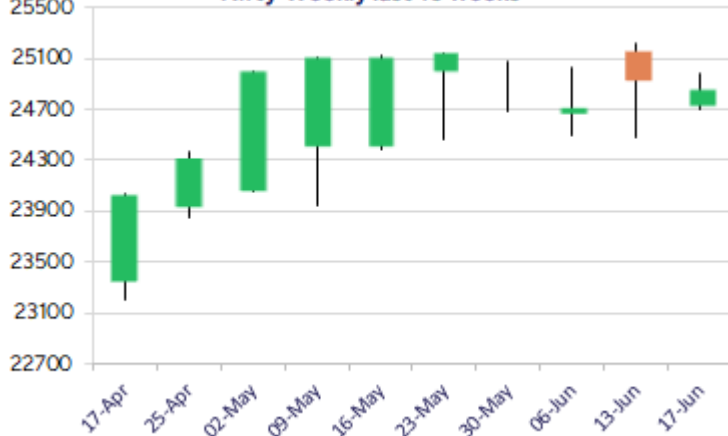
* Nifty 24853.40 -93.10

* Bank Nifty 55714.15 -230.75

Nifty daily last 10 days



Nifty Weekly last 10 weeks



*Blue candle → Close rate > Open rate * Red candle → Close rate < Open rate

Market Preview

Nifty resists near 25000 zone

Nifty failed to move past the 25000 zone finding resistance and witnessed a gradual slide as the day progressed to end near the 24850 level with bias maintained with a cautious approach. BankNifty once again is finding the 56000 zone as a tough hurdle and with profit booking witnessed slipped down to end near 55700 level. The market breadth turned weak with the advance decline indicating a ratio of 2:3 at close.

Market Forecast

Nifty daily range 24700-25000

Nifty, after witnessing a significant pullback in the last two sessions, found resistance near the 25000 zone and with profit booking seen witnessed a gradual slide to end near the 24850 level with bias and sentiment maintained with a cautious approach as of now. As mentioned earlier, the index would have the crucial and important support zone near the 24500 zone and would need a decisive move above the 25200 level to trigger for fresh further rise in the coming days.

BankNifty, succumbed to profit booking during the session and slipped as the day progressed to close near the 55700 level once again finding resistance near the 56000 zone which is a crucial and important resistance zone. The index has been precariously placed and would need a decisive move above the 56000 zone to turn the bias positive and at the same time would need to sustain the near-term support positioned near the 55000 level to maintain the overall trend intact.

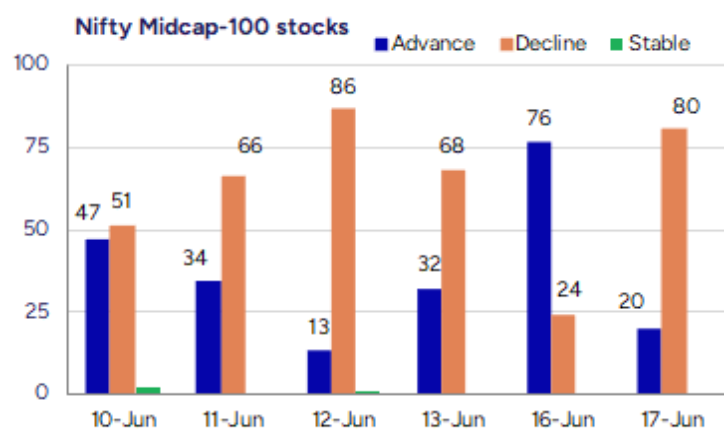
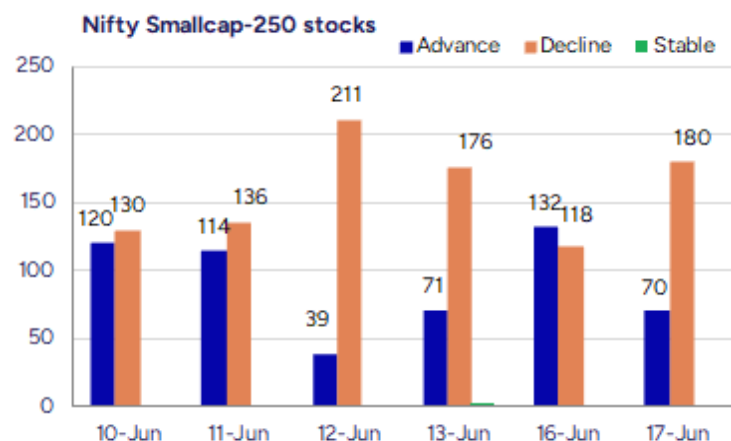
The support for the day is seen at 24700 levels while the resistance is seen at 25000 levels. BankNifty would have the daily range of 55200-56200 levels.

Indices	Period	Closing	% Chng	Trend	Reversal	2 Sup	1 Sup	Pivot	1 Res	2 Res
Nifty	Daily	24853.40	-0.37%	-4	25039.00	24715	24784	24883	24952	25051
	Weekly	24718.60	-1.14%	-1	24865.20	24055	24387	24804	25136	25553
	Monthly	24750.70	1.71%	1	24390.40	23422	24086	24600	25265	25779
Bank Nifty	Daily	55714.15	-0.41%	-5	56435.20	55385	55550	55808	55973	56232
	Weekly	55527.35	-1.86%	-1	56270.45	54009	54768	55909	56668	57809
	Monthly	55749.70	1.20%	2	53879.10	52648	54199	55036	56587	57424
Sensex	Daily	81583.30	-0.26%	-4	82096.65	81170	81377	81633	81840	82097
	Weekly	81118.60	-1.30%	-1	81900.95	79071	80095	81437	82460	83802
	Monthly	81451.01	1.51%	1	80320.40	77296	79374	81046	83123	84796

Gainers - Losers (Nifty 500 Stocks)

Gainers			
Company Name	Last Price	% Gain	Volume
Cinevista	21.34	19.96	1406360
Pentagon Rubber	69.5	19.93	82000
Plada Infotech	21.6	18.68	36000
Birla Cable	208.05	14.11	4439889
Sterlite Techno	112.71	13.41	147804067
Kalyani Steels	904.5	12	3971046
Rane Madras	1003.25	11.17	445057

Losers			
Company Name	Last Price	% Loss	Volume
Saroja Pharma	38	-9.31	52800
Shipping Corp	215.86	-8.26	21453671
Sigachi Ind	54.72	-7.08	5480101
Indian Card	307.5	-6.78	16544
Bigbloc Constru	65.33	-6.67	724481
Viviana Power	1283.95	-6.61	29500
Rajputana Bio	227.8	-6.54	35000



Nifty Daily chart with RSI indicator



BankNifty Daily chart with RSI indicator



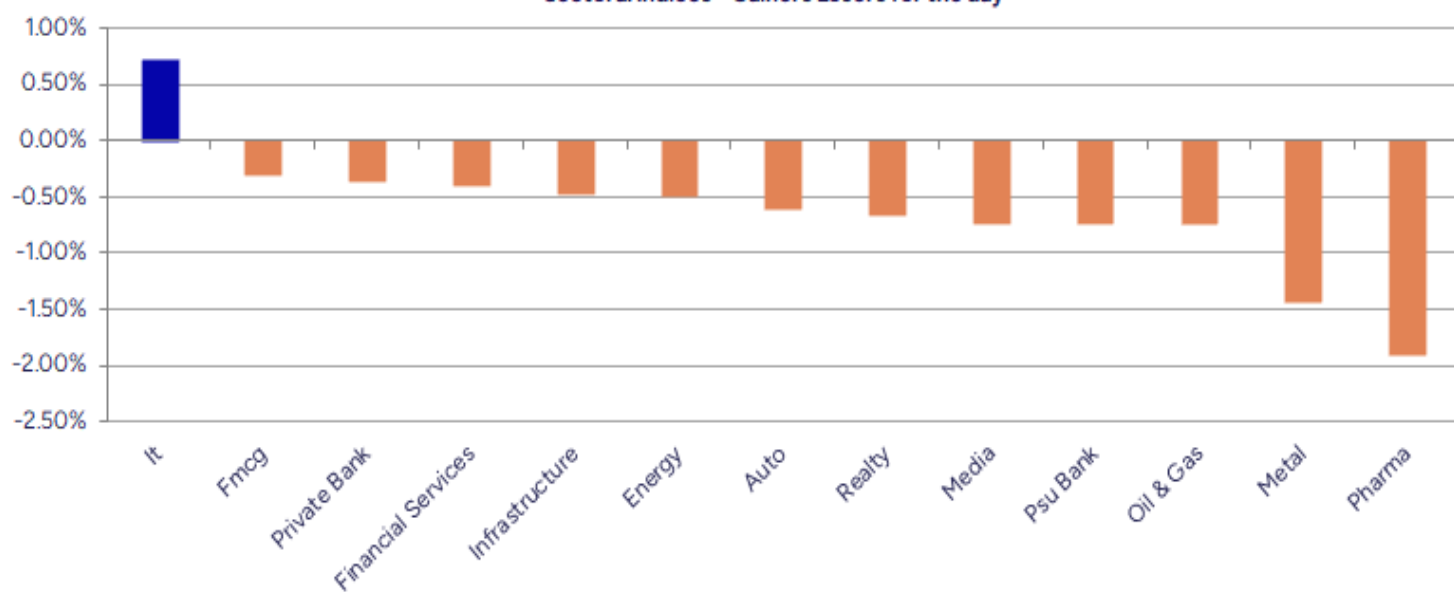
Breakouts - Cross above 200 DMA			
Company Name	LCP	Change %	200 DMA
Sterlite Techno	112.71	10.09	102.38
Kalyani Steels	904.5	7.43	841.95
Sasta Sundar	303.05	5.89	286.19
Birla Cable	208.05	5.68	196.87
Umang Dairies	93.81	4.56	89.72
Bajaj Health	532.85	3.16	516.55
Signet Ind	64.86	3.08	62.92
Maan Aluminium	131.48	2.77	127.93
Innovana	420.3	2.59	409.69
NRB Bearings	268.6	2.29	262.58
Mohit Ind	31.55	1.94	30.95
Laxmi Cotspin	30.35	1.91	29.78
Pyramid Techno	182.97	1.80	179.73
Bayer CropScien	5654.5	1.75	5557.13
Shyam Telecom	17.25	1.65	16.97
CG Power	694.1	1.63	682.95
Wealth First Po	1234.2	1.59	1214.86
Rushil Decor	30.48	1.53	30.02

* Stocks crossing above its Simple Moving Average (200DMA)

Breakdown - Cross below 200 DMA			
Company Name	LCP	Change %	200 DMA
Selan Explore	703.9	-3.61	730.3
Richa Info	76	-3.42	78.69
Jindal Steel	891	-3.31	921.52
TAC Infosec	1040.7	-3.31	1076.35
Weizmann	119.56	-3.02	123.28
Univastu India	235.22	-2.66	241.66
Hind Copper	252.71	-2.54	259.3
Vascon Engineer	49.65	-2.44	50.89
NMDC	68.63	-2.33	70.27
Global Educatio	64.06	-2.23	65.52
Archies	22.91	-1.88	23.35
Rattanindia Ent	57.39	-1.85	58.47
Vaswani Ind	46.31	-1.82	47.17
Inspirisys Solu	101.97	-1.73	103.76
Oswal ChemandFe	45.29	-1.69	46.07
GHCL Textiles	90.9	-1.68	92.45
Ind-Swift Labs	102.4	-1.64	104.11
Tarsons Product	383.85	-1.60	390.09

* Stocks crossing below its Simple Moving Average (200DMA)

Sectoral Indices - Gainers Losers for the day



Stocks witnessing a volume surge as compared to their 5 day average volume

Watch out for the stocks that have seen a huge spurt in its share price over the last three days

Volume Shockers - NSE					
Company name	LCP	% Chg	Volume	Avg Vol *	% Chg
Diamond Power	103.68	2.17	3935733	6800	57775
Touchwood Enter	121.32	4.78	560749	3929	14172
Sterlite Techno	112.71	13.41	147804067	1694993	8620
Shakti Pumps	1008.6	1.3	1943977	38631	4932
KCK Industries	39.9	7.84	622500	13600	4477
Krishival Foods	363	3.71	53000	1200	4317
Sikko Industrie	81.71	9.9	1272661	29809	4169
Happiest Minds	668.45	11.12	25039081	604427	4043
United Polyfab	19.09	-2.55	555664	14703	3679
Kalyani Steels	904.5	12	3971036	106707	3621
Laxmi Goldorna	695.05	-4.84	36534	1094	3240
Dodla	1409	5.01	860179	27046	3080
BEW Engineering	178	1.92	33500	1125	2878
Sky Gold	362.35	-4.72	644386	25989	2379
Jai Balaji Ind	104.74	-1.69	1299032	54390	2288
Atal	19.78	2.33	2380799	100889	2260
Saroja Pharma	38	-9.31	52800	2240	2257
Capri Global	173.18	1.07	23355357	1000204	2235
Birla Cable	208.05	14.11	4431387	196725	2153
Shradha Infra	75.13	1.8	279510	13166	2023

* the Average Volume of last 5 days

Price Shockers - NSE				
Company name	LCP	Prv Close	% Chg	Volume
Sterlite Techno	112.71	83.33	35.26	147804591
Touchwood Enter	121.32	96.49	25.73	560749
DELPHI WORLD	165.55	135.03	22.6	323383
Subros	1013.85	831.5	21.93	4934166
Cyber Media	19.6	16.2	20.99	191815
United Drilling	236.4	203.33	16.26	740184
STL Global	18.16	15.62	16.26	2068124
Pentagon Rubber	69.5	59.8	16.22	82000
Bharat Rasayan	10423.5	8988	15.97	30927
Birla Cable	208.05	179.64	15.81	4439889
Shyam Telecom	17.25	14.94	15.46	6285
KDDL	2854.4	2493.9	14.46	191988
Kalyani Steels	904.5	791.5	14.28	3971086
Cinevista	21.34	18.75	13.81	1406360
Nelcast	145.76	128.77	13.19	1088860
Mallcom (India)	1245.8	1102.6	12.99	169351
Good Luck	1120	997.5	12.28	774441
Laxmi Cotspin	30.35	27.14	11.83	287542
Ruby Mills	241.69	217.19	11.28	81628
Rane Madras	1003.25	904.1	10.97	445057

* the % price rise of the last 3 days

Symbol	LTP	Chng	% Chng	Volume (lacs)	Turnover (crs.)	52w High	Diff with 52w H	52w Low	Diff with 52w L	365 days % chng	30 days % chng
NIFTY 50	24853.40	-93.10	-0.37%	2424.11	21817.55	26277.35	5.42%	21743.65	14.30%	-0.29%	6.31%
ADANIENT	2485.20	-58.80	-2.31%	7.03	175.80	3345.00	25.70%	2025.00	22.73%	-0.43%	-22.01%
ADANIPTS	1390.00	-10.60	-0.76%	15.72	219.69	1604.95	13.39%	995.65	39.61%	-0.48%	-2.10%
APOLLOHOSP	7019.00	-95.00	-1.34%	2.64	186.24	7545.35	6.98%	6001.00	16.96%	1.41%	14.60%
ASIANPAINT	2264.00	19.20	0.86%	15.41	348.93	3394.90	33.31%	2124.75	6.55%	-4.62%	-23.17%
AXISBANK	1214.00	-1.40	-0.12%	44.93	547.44	1339.65	9.38%	933.50	30.05%	0.55%	2.91%
BAJAJ-AUTO	8500.00	-29.50	-0.35%	2.86	243.17	12774.00	33.46%	7089.35	19.90%	0.55%	-14.38%
BAJAJFINSV	2001.00	-27.20	-1.34%	12.20	245.28	2135.00	6.28%	1523.25	31.36%	-0.27%	27.42%
BAJFINANCE	924.00	-14.00	-1.49%	61.10	564.96	978.80	5.60%	642.50	43.81%	-89.77%	-87.22%
BEL	401.65	-2.20	-0.54%	243.71	984.08	407.50	1.44%	240.25	67.18%	10.98%	30.44%
BHARTIARTL	1856.80	-4.50	-0.24%	65.62	1216.98	1917.00	3.14%	1372.85	35.25%	2.61%	30.40%
CIPLA	1503.90	-23.10	-1.51%	13.35	201.13	1702.05	11.64%	1335.00	12.65%	1.81%	-2.41%
COALINDIA	391.00	-3.35	-0.85%	32.48	127.53	543.55	28.07%	349.25	11.95%	-2.58%	-19.02%
DRREDDY	1319.90	-26.90	-2.00%	16.49	218.68	1421.49	7.15%	1020.00	29.40%	9.43%	-77.87%
EICHERMOT	5344.00	-21.00	-0.39%	7.11	379.47	5906.50	9.52%	4508.75	18.53%	-2.62%	8.71%
GRASIM	2672.00	-32.90	-1.22%	2.41	64.70	2877.75	7.15%	2276.95	17.35%	-3.54%	9.46%
HCLTECH	1728.00	5.00	0.29%	17.77	307.68	2012.20	14.12%	1302.75	32.64%	3.80%	20.40%
HDFCBANK	1926.00	-9.40	-0.49%	84.89	1636.36	1996.30	3.52%	1588.05	21.28%	0.04%	21.20%
HDFCLIFE	773.00	2.45	0.32%	19.00	146.95	791.10	2.29%	575.65	34.28%	2.66%	28.78%
HEROMOTOCO	4370.00	5.50	0.13%	3.32	144.94	6246.25	30.04%	3344.00	30.68%	0.44%	-24.80%
HINDALCO	641.70	-7.90	-1.22%	41.99	270.57	772.65	16.95%	546.45	17.43%	-1.21%	-4.97%
HINDUNILVR	2328.00	0.60	0.03%	11.19	260.19	3035.00	23.29%	2136.00	8.99%	-2.27%	-6.14%
ICICIBANK	1422.00	-4.90	-0.34%	69.70	992.02	1471.60	3.37%	1101.20	29.13%	-1.86%	29.06%
INDUSINDBK	810.30	-10.95	-1.33%	23.44	190.14	1550.00	47.72%	606.00	33.71%	5.26%	-45.34%
INFY	1638.00	14.20	0.87%	76.22	1248.48	2006.45	18.36%	1307.00	25.33%	2.13%	9.06%
ITC	417.05	-1.15	-0.27%	90.28	376.77	528.50	21.09%	390.15	6.89%	-4.02%	-3.00%
JIOFIN	289.80	-4.35	-1.48%	88.56	258.38	368.30	21.31%	198.65	45.88%	6.19%	-17.61%
JSWSTEEL	997.90	-5.90	-0.59%	10.75	107.64	1074.90	7.16%	854.15	16.83%	-1.76%	8.97%
KOTAKBANK	2137.00	-2.00	-0.09%	31.08	665.07	2301.90	7.16%	1679.05	27.27%	1.46%	24.56%
LT	3620.00	-8.70	-0.24%	9.31	336.48	3963.50	8.67%	2965.30	22.08%	0.67%	-1.60%
M&M	3008.00	-15.60	-0.52%	14.55	437.75	3270.95	8.04%	2425.00	24.04%	-3.57%	3.24%
MARUTI	12598.00	68.00	0.54%	2.27	284.60	13680.00	7.91%	10725.00	17.46%	-3.58%	-2.45%
NESTLEIND	2356.50	-33.30	-1.39%	7.66	180.89	2778.00	15.17%	2110.00	11.68%	-0.79%	-6.01%
NTPC	335.00	1.30	0.39%	67.97	227.87	448.45	25.30%	292.80	14.41%	-2.74%	-9.43%
ONGC	251.98	-4.81	-1.87%	187.81	474.82	345.00	26.96%	205.00	22.92%	3.85%	-6.76%
POWERGRID	288.70	0.05	0.02%	72.87	210.18	366.25	21.17%	247.30	16.74%	-3.85%	-10.22%
RELIANCE	1430.00	-7.80	-0.54%	103.67	1484.64	1608.80	11.11%	1114.85	28.27%	-1.28%	-51.35%
SBILIFE	1796.10	-1.70	-0.09%	5.58	100.41	1936.00	7.23%	1372.55	30.86%	1.38%	22.31%
SBIN	792.05	-0.45	-0.06%	77.53	615.62	899.00	11.90%	680.00	16.48%	0.05%	-5.56%
SHRIRAMFIN	663.90	-12.25	-1.81%	23.90	159.83	730.45	9.11%	493.35	34.57%	1.60%	-75.25%
SUNPHARMA	1653.10	-32.20	-1.91%	54.08	893.51	1960.35	15.67%	1460.90	13.16%	-2.86%	11.17%
TATACONSUM	1070.10	-13.30	-1.23%	6.65	71.31	1250.10	14.40%	882.90	21.20%	-7.24%	-2.61%
TATAMOTORS	673.00	-13.65	-1.99%	171.12	1161.19	1179.00	42.92%	535.75	25.62%	-6.03%	-30.88%
TATASTEEL	152.58	-1.59	-1.03%	167.40	256.81	184.60	17.35%	122.62	24.43%	-2.15%	-15.82%
TCS	3512.00	15.70	0.45%	21.12	741.55	4592.25	23.52%	3056.05	14.92%	-1.83%	-8.76%
TECHM	1722.00	28.10	1.66%	21.05	360.38	1807.70	4.74%	1209.40	42.38%	4.76%	23.51%
TITAN	3406.40	-31.70	-0.92%	10.00	341.06	3867.00	11.91%	2925.00	16.46%	-5.38%	-2.60%
TRENT	5624.50	-55.00	-0.97%	5.30	298.90	8345.00	32.60%	4488.00	25.32%	1.73%	8.27%
ULTRACEMCO	11385.00	-110.00	-0.96%	1.21	138.35	12339.00	7.73%	10047.85	13.31%	-3.44%	2.24%
WIPRO	262.90	0.01	#VALUE!	75.28	198.54	324.60	19.01%	228.00	15.31%	3.37%	-44.94%
ETERNAL	246.96	-5.19	-2.06%	206.52	513.55	304.70	18.95%	184.80	33.64%	2.60%	#VALUE!

Disclaimer / Disclosures

ANALYST CERTIFICATION

I, Mrs. Vaishali Parekh B.com, Research Analyst, author and the name subscribed to this report, hereby certify that all of the views expressed in this research report accurately reflect our views about the subject issuer(s) or securities. We also certify that no part of our compensation was, is, or will be directly or indirectly related to the specific recommendation(s) or view(s) in this report.

Terms & conditions and other disclosures:

Prabhudas Lilladher Pvt. Ltd, Mumbai, India (hereinafter referred to as "PL") is engaged in the business of Stock Broking, Portfolio Manager, Depository Participant and distribution for third party financial products. PL is a subsidiary of Prabhudas Lilladher Advisory Services Pvt Ltd. which has its various subsidiaries engaged in business of commodity broking, investment banking, financial services (margin funding) and distribution of third party financial/other products, details in respect of which are available at www.plindia.com

This document has been prepared by the Research Division of PL and is meant for use by the recipient only as information and is not for circulation. This document is not to be reported or copied or made available to others without prior permission of PL. It should not be considered or taken as an offer to sell or a solicitation to buy or sell any security.

The information contained in this report has been obtained from sources that are considered to be reliable. However, PL has not independently verified the accuracy or completeness of the same. Neither PL nor any of its affiliates, its directors or its employees accepts any responsibility of whatsoever nature for the information, statements and opinion given, made available or expressed herein or for any omission therein.

Recipients of this report should be aware that past performance is not necessarily a guide to future performance and value of investments can go down as well. The suitability or otherwise of any investments will depend upon the recipient's particular circumstances and, in case of doubt, advice should be sought from an independent expert/advisor.

Either PL or its affiliates or its directors or its employees or its representatives or its clients or their relatives may have position(s), make market, act as principal or engage in transactions of securities of companies referred to in this report and they may have used the research material prior to publication.

PL may from time to time solicit or perform investment banking or other services for any company mentioned in this document.

PL is registered as Research Analyst under Securities and Exchange Board of India (Research Analysts) Regulations, 2014 PL submits that no material disciplinary action has been taken on us by any Regulatory Authority impacting Equity Research Analysis activities.

PL or its research analysts or its associates or his relatives do not have any financial interest in the subject company.

PL or its research analysts or its associates or his relatives do not have actual/beneficial ownership of one per cent or more securities of the subject company at the end of the month immediately preceding the date of publication of the research report.

PL or its research analysts or its associates or his relatives do not have any material conflict of interest at the time of publication of the research report.

PL or its associates might have received compensation from the subject company in the past twelve months.

PL or its associates might have managed or co-managed public offering of securities for the subject company in the past twelve months or mandated by the subject company for any other assignment in the past twelve months.

PL or its associates might have received any compensation for investment banking or merchant banking or brokerage services from the subject company in the past twelve months.

PL or its associates might have received any compensation for products or services other than investment banking or merchant banking or brokerage services from the subject company in the past twelve months PL or its associates might have received any compensation or other benefits from the subject company or third party in connection with the research report.

PL encourages independence in research report preparation and strives to minimize conflict in preparation of research report. PL or its analysts did not receive any compensation or other benefits from the subject Company or third party in connection with the preparation of the research report. PL or its Research Analysts do not have any material conflict of interest at the time of publication of this report.

It is confirmed that Mrs.Vaishali Parekh B.com, Research Analyst of this report has not received any compensation from the companies mentioned in the report in the preceding twelve months compensation of our Research Analysts is not based on any specific merchant banking, investment banking or brokerage service transactions.

The Research analysts for this report certifies that all of the views expressed in this report accurately reflect his or her personal views about the subject company or companies and its or their securities, and no part of his or her compensation was, is or will be, directly or indirectly related to specific recommendations or views expressed in this report.

The research analysts for this report has not served as an officer, director or employee of the subject company PL or its research analysts have not engaged in market making activity for the subject company

Our sales people, traders, and other professionals or affiliates may provide oral or written market commentary or trading strategies to our clients that reflect opinions that are contrary to the opinions expressed herein, and our proprietary trading and investing businesses may make investment decisions that are inconsistent with the recommendations expressed herein. In reviewing these materials, you should be aware that any or all of the foregoing, among other things, may give rise to real or potential conflicts of interest.

PL and its associates, their directors and employees may (a) from time to time, have a long or short position in, and buy or sell the securities of the subject company or (b) be engaged in any other transaction involving such securities and earn brokerage or other compensation or act as a market maker in the financial instruments of the subject company or act as an advisor or lender/borrower to the subject company or may have any other potential conflict of interests with respect to any recommendation and other related information and opinions.